



VMware

Exam VCPD510

VMware Certified Professional - Desktop

Version: 7.0

[Total Questions: 439]

Topic 1, Volume A

Question No : 1 - (Topic 1)

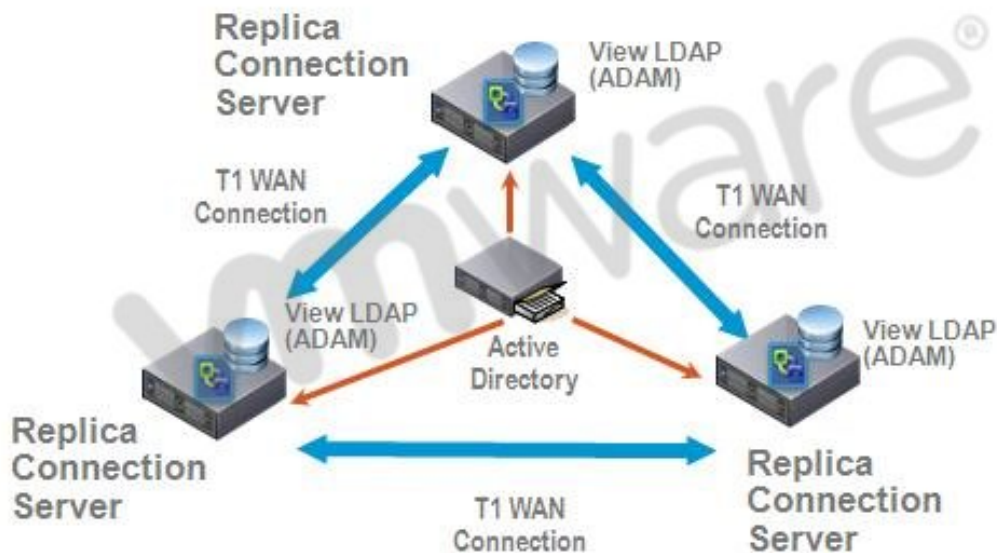
What is the proper syntax to use when adding a domain user to the View Composer configuration?

- A. DOMAIN\USER
- B. DOMAIN.COM\USER
- C. OU=DOMAIN, CN=USER
- D. USER@DOMAIN.COM

Answer: B

Question No : 2 - (Topic 1)

-- Exhibit --



-- Exhibit --

Click the Exhibit button.

A proposed configuration of three replica servers is shown.

What can result from this configuration?

- A. Multiple ADAM instances can cause a performance problem.
- B. Three replica servers can result in client connection problems.
- C. Multiple connections to Active Directory can cause a performance problem.
- D. Replication over WAN connections can cause inconsistencies in the LDAP database.

Answer: D

Question No : 3 - (Topic 1)

An Administrator is upgrading to View Connection Server 5.x from a previous release.

Which component is omitted from installation automatically during an upgrade?

- A. VMware Message Bus Component
- B. VMware Script Host
- C. VMware PCoIP Secure Gateway
- D. VMware VDMDS

Answer: D

Question No : 4 - (Topic 1)

What is the minimum required level of privileges required to install the View Connection Server?

- A. Domain User
- B. Domain Administrator
- C. Local Power User
- D. Local Administrator

Answer: D

Question No : 5 - (Topic 1)

An administrator is adding a replicated instance of View Connection Server to the environment silently.

Which MSI property would be used to identify the instance being replicated?

- A. ADAM_PRIMARY_INSTANCE
- B. ADAM_PRIMARY_NAME
- C. VDM_INSTANCE_NAME
- D. VDM_SERVER_INSTANCE

Answer: B

Question No : 6 - (Topic 1)

How many disks can a View Transfer Server concurrently transfer?

- A. 15
- B. 60
- C. 4
- D. 30

Answer: B

Question No : 7 - (Topic 1)

Which TCP port must be open on the firewall of the View Transfer Server?

- A. 443
- B. 21
- C. 389
- D. 4172

Answer: A

Question No : 8 - (Topic 1)

An administrator is creating a new virtual machine for use as a View Transfer Server.

Which SCSI controller should be selected?

- A. Buslogic Parallel
- B. LSI Logic Parallel
- C. LSI Logic SAS
- D. VMware Paravirtual

Answer: C

Question No : 9 - (Topic 1)

An administrator would like to add a View Security Server to add external access to the environment.

Which View component must be installed and configured prior to installation of the View Security Server?

- A. View Agent Server
- B. View Connection Server
- C. View Replica Server
- D. View Transfer Server

Answer: B

Question No : 10 - (Topic 1)

An administrator is installing a View Security Server and is required to specify a PCoIP external URL.

Which is a valid example of a PCoIP external URL?

- A. https://10.10.10.100:443
- B. https://10.10.10.100:4172
- C. https://view.domain.com:443
- D. https://view.domain.com:4172

Answer: B

Question No : 11 - (Topic 1)

Which attribute is required when configuring a View Security Server Pairing Password?

- A. Password complexity value
- B. Password expiration value
- C. Password length value
- D. Password timeout value

Answer: D

Question No : 12 - (Topic 1)

During an installation of Security Server, a message displays that the pairing password has expired.

Where must a new password be configured?

- A. View Connection Server
- B. Active Directory
- C. View Administrator
- D. View Security Server

Answer: C

Question No : 13 - (Topic 1)

What is the minimum amount of memory required in order to install View Security Server on Windows Server 2003?

- A. 1GB
- B. 4GB
- C. 2GB
- D. 8GB

Answer: C

Question No : 14 - (Topic 1)

An organization has a View Connection Server in DomainA. Users in DomainB need to access desktops on the existing connection server in DomainA.

What must the system administrator do in Active Directory to enable users from DomainB to access desktops in DomainA?

- A. set up a Security Server to proxy the connection to DomainB
- B. check the multidomain authentication box in the View Manager Server Settings
- C. set up a one-way trust relationship from DomainB to DomainA
- D. set up a two-way trust relationship between DomainA and DomainB

Answer: D

Question No : 15 - (Topic 1)

An administrator creates a View Composer linked clone pool of Windows XP Desktops, and the operation fails to finish customizing the desktops. The error log below provides more detail.

```
2010-09-21 12:46:04,281 [836] INFO Guest - [Guest.cpp, 248] Attempting to join Test1 to the domain vmw-dc.local f3 2010-09-21 12:46:04,562 [836] FATAL Guest - [Guest.cpp, 261] Domain join failedD. 1265 f3 2010-09-21 12:46:04,718 [836] FATAL CSvmGaService - [svmGaService.cpp, 116] Domain join failedError 1265 (0x4f1): The system detected a possible attempt to compromise security. Please ensure that you can contact the server that authenticated you.
```

What is the cause of the error?

- A. Active Directory encryption levels
- B. Active Directory group policy
- C. Active Directory permissions
- D. Active Directory root certificate

Answer: A

Question No : 16 - (Topic 1)

The security team has determined that the default setting for the connection ticket is too long and wants to shorten the period that the ticket is valid for authentication.

Which GPO needs to be configured and applied to the View environment?

- A. vdm_common.adm
- B. vdm_client.adm
- C. vdm_server.adm
- D. vdm_agent.adm

Answer: D

Question No : 17 - (Topic 1)

What is the default port number that View Composer uses to communicate with other View components?

- A. 4001
- B. 4100
- C. 443
- D. 18443

Answer: D

Question No : 18 - (Topic 1)

What is the maximum supported number of linked clone virtual machines View Composer can provision per pool?

- A. 512
- B. 1024
- C. 128
- D. 256

Answer: A

Question No : 19 - (Topic 1)

What is the default number of linked clone virtual machines that View Composer will recompose at one time?

- A. 2
- B. 8
- C. 64
- D. 128

Answer: A

Question No : 20 - (Topic 1)

What is the maximum number of ESXi hosts in a vSphere cluster used by View Composer if using VMFS datastores?

- A. 4
- B. 8
- C. 32
- D. 16

Answer: B

Question No : 21 - (Topic 1)

Which setting in View Composer can be used to reduce the storage footprint of a pool of virtual desktops?

- A. redirect disposable files to a non-persistent disk
- B. redirect temporary files to a non-persistent disk
- C. redirect user profile data to a non-persistent disk
- D. store Windows profile on a disposable disk

Answer: A

Question No : 22 - (Topic 1)

An administrator is creating a new account for use with View Composer.

What is the minimum security group to which the account must belong?

- A. Domain Administrators
- B. Domain Computers
- C. Domain Users
- D. Forest Administrators

Answer: C

Question No : 23 - (Topic 1)

An administrator is receiving an error when trying to connect to View Composer from the View Administrator. The environment has been upgraded from 4.0.x.

Why can the connection not be made?

- A. The network port is no longer valid.
- B. The View Composer service must be restarted.
- C. An incorrect certificate was chosen during installation.
- D. Security certificates cannot be migrated between versions.

Answer: A

Question No : 24 - (Topic 1)

What is a prerequisite for configuring an events database?

- A. The events database certificate must be created
- B. An ODBC data source for the events database must exist
- C. A prefix for the tables in the events database has been defined
- D. The username and password of an administrator on View Administrator

Answer: C

Question No : 25 - (Topic 1)

What is the default port number used by the View Composer when setting up the vCenter

Server connection?

- A. 443
- B. 8080
- C. 8443
- D. 18443

Answer: D

Question No : 26 - (Topic 1)

What is the default port used when an administrator configures the external URL for the PCoIP Secure Gateway?

- A. 443
- B. 3389
- C. 4172
- D. 8080

Answer: C

Question No : 27 - (Topic 1)

Session Timeout can be used in conjunction with which desktop/pool setting to help conserve ESXi host resources?

- A. Desktop state
- B. Remote desktop power policy
- C. Allow users to reset their desktop
- D. Refresh desktop OS

Answer: B

Question No : 28 - (Topic 1)

Users have access to company confidential files and applications when using View internally. When users are connected from home, they are redirected to a different pool of

desktops that have restricted applications and restricted network access.

Which feature in View enables this functionality?

- A. Global Policies
- B. vShield Endpoint
- C. Security Servers
- D. Tags

Answer: D

Question No : 29 - (Topic 1)

A new SSL certificate has been installed on the View Security Server.

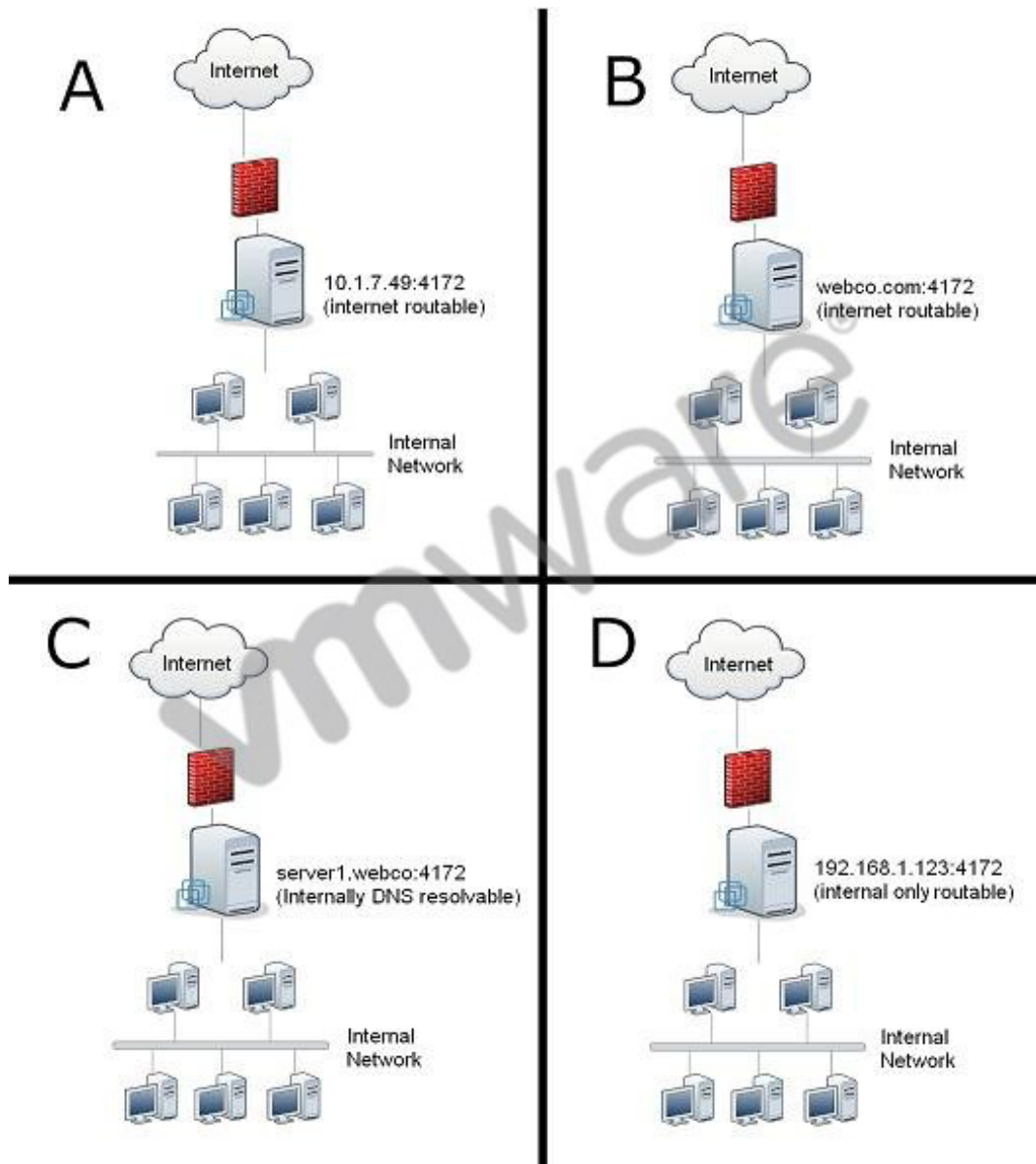
Which step must be completed to ensure that the Security Server uses the new certificate?

- A. restart the VMware View Connection Server service
- B. restart the VMware View Security Server service
- C. start the newly created SSL_Certificate service
- D. edit the locked.properties file to enable the new SSL certificate

Answer: B

Question No : 30 - (Topic 1)

-- Exhibit --



-- Exhibit --

Click the Exhibit button.

Which scenario illustrates the correct format for setting the PCoIP External URL?

- A. A
- B. B
- C. C
- D. D

Answer: A

Question No : 31 - (Topic 1)

A company has a security certificate regenerated with a new password. The administrator reinstalls the new certificate.

What must the administrator do to be sure the View Security Server uses the new certificate password?

- A. Edit the entry password_new=yes in the certificate.properties file.
- B. Edit the entry keypass=new_password in the locked.properties file.
- C. Reflect the new password in Active Directory Certificate Server properties.
- D. Restart the Certificate Server service to enable use of the new password.

Answer: B

Question No : 32 - (Topic 1)

A company opens a new remote office with five PCoIP-enabled thin clients. The administrator configures the clients to connect to the View Security Server installed at Headquarters.

Which setting must the administrator configure on the View Security Server to make sure PCoIP is routed to the internal network?

- A. PCoIP External URL
- B. PCoIP Gateway URL
- C. PCoIP Gateway Address
- D. External URL

Answer: A

Question No : 33 - (Topic 1)

The DNS name and IP address of your company's View security server are secgw.company.com and 68.47.22.10.

What is the correct format for the PCoIP External URL?

- A. 68.47.22.10:4172
- B. secgw.company.com:443
- C. https://68.47.22.10:443
- D. https://secgw.company.com:4172

Answer: A

Question No : 34 - (Topic 1)

What should an administrator do to ensure that communications between a View Security Server and its associated connection server is encrypted?

- A. Configure an IPSec tunnel between the servers.
- B. Enable certificate checking on each server.
- C. Install a firewall between the servers.
- D. Select the same encryption level on each server.

Answer: A

Question No : 35 - (Topic 1)

A View administrator must identify any changes that need to take place in the corporate firewall to allow local mode desktops to be checked out from outside the firewall.

What is the minimum requirement to enable this functionality?

- A. TCP 443 and UDP 4172 are open to the View Transfer Server.
- B. TCP 443 and UDP 4172 are open to the View Connection Server.
- C. TCP 80 and TCP 443 are open to the View Transfer Server.
- D. TCP 80 and TCP 443 are open to the View Connection Server.

Answer: C

Question No : 36 - (Topic 1)

What encryption algorithm is supported for encrypting a local mode disk?

- A. AES-192
- B. MD5-128
- C. RSA-128
- D. SALSA20-256

Answer: A

Question No : 37 - (Topic 1)

What DRS automation policy must be configured for virtual machines that are used as a transfer server?

- A. Disabled
- B. Fully Automated
- C. Manual
- D. Partially Automated

Answer: C

Question No : 38 - (Topic 1)

A View administrator is planning for four users to access View desktops across a T1 WAN circuit. Flash content will be used inside of browser sessions by all four users.

What should the administrator do to ensure that the View desktops use the least bandwidth possible for Adobe Flash content in a browser?

- A. use the Client Configuration ADM template to apply a GPO to enable Flash Cache
- B. use the PCoIP ADM template to set the PCoIP Maximum Frame rate to 20 or less
- C. set Flash Quality to Low and Flash Throttling to High in View Administrator
- D. use the PCoIP ADM template to set PCoIPImagingMaximumInitialImageQuality to 50 or less

Answer: C

Question No : 39 - (Topic 1)

Adobe Flash Throttling has been set to Aggressive, and Flash Quality has been set to Low in order to manage bandwidth. A user complains about the quality of Flash objects.

Which action can be taken to improve the quality of Flash objects without changing the Throttling and Quality settings?

- A. instruct the user to move the mouse cursor into the Flash content while it is playing
- B. enable Force Offscreen Composition in Internet Explorer advanced settings
- C. enable hardware acceleration on the display properties
- D. lower the color quality to Medium (16-bit) on the display properties

Answer: A

Question No : 40 - (Topic 1)

What is the optimal encryption setting to improve user experience when configuring PCoIP?

- A. SSL/TSL
- B. AES-128
- C. PGP encryption
- D. SALSA20-256

Answer: D

Question No : 41 - (Topic 1)

Which View Agent setting can be used to allow only View managed connections to a virtual desktop?

- A. AllowDirectRDP
- B. AllowOnlyViewConnections
- C. DisallowRDPDirect
- D. DisallowRemoteDesktop

Answer: A

Question No : 42 - (Topic 1)

Which registry value must be set to redirect an individual USB Human Interface Device within the View Client when it is running on Windows 7 64-bit?

- A. AllowHardwareIDs
- B. ConnectHardwareIDs
- C. AllowHumanInterfaceDevices
- D. ConnectHumanInterfaceDevices

Answer: A

Question No : 43 - (Topic 1)

A View administrator adds a user account for a newly-hired desktop administrator. The desktop administrator is unable to restart a View desktop.

Where should the View administrator go to set the necessary permissions to solve this issue?

- A. Active Directory Users and Groups
- B. View Administrator
- C. Active Directory Remote Desktop Users Group
- D. View Security Server

Answer: B

Question No : 44 - (Topic 1)

A View administrator needs to assign permissions to allow a desktop administrator to manage a desktop pool.

What is the least permissive View administrator role that would allow the user to do this?

- A. Global Configuration and Policy Administrators
- B. Inventory Administrators
- C. Desktop Pool Administrators
- D. Administrators

Answer: B

Question No : 45 - (Topic 1)

A desktop administrator has been assigned the task of managing a single automated desktop pool for a small branch of a larger organization. This pool has been placed in a folder specifically for this location.

In View Administrator, which built-in role should this administrator be assigned to manage this folder?

- A. Administrator
- B. Desktop Administrator
- C. Folder Administrator
- D. Inventory Administrator

Answer: D

Question No : 46 - (Topic 1)

Which built-in role provides the highest level of permissions in View Manager?

- A. Administrators
- B. Enterprise Administrators
- C. Global Config and Policy Administrators
- D. Inventory Administrators

Answer: A

Question No : 47 - (Topic 1)

A desktop technician is responsible for visiting physical desktops and adding the View Agent so that they can be connected remotely via View. Another View administrator handles entitlements separately after the computer has been added.

What is the minimum privilege required to allow the technician to perform this task?

- A. Direct Interaction
- B. Manage Desktops
- C. Manage Physical Devices
- D. Register Agent

Answer: D

Question No : 48 - (Topic 1)

Users have been given access to several different desktop pools, and they need a specific printer mapped to any desktop to which they connect.

How should the View administrator ensure that each user always receives the specific mapped printer?

- A. Select User/User Group and specify the user ID of the specific user.
- B. Select MAC Address and specify the MAC addresses of the desktops to which the user connects.
- C. Select Client Name and specify the client names of the desktops to which the user connects.
- D. Select IP Range and specify the IP range of all the desktop pools to which the user has access.

Answer: A

Question No : 49 - (Topic 1)

A View administrator enables GPO settings for location-based printing, but users are still unable to print to a local printer.

Which step did the administrator likely neglect to perform in addition to enabling GPO settings?

- A. Enable ThinPrint in the View Agent of the desktops that will use location-based printing.
- B. Run the AutoConnect Location-based Printing for VMware View setup wizard on the domain computer being used to configure the GPO.
- C. Register the TPVMGPoACmap.dll on the domain computer being used to configure the GPO.
- D. Enable VirtualPrint in the View Agent of the desktops that will use location-based

printing.

Answer: C

Question No : 50 - (Topic 1)

A large group of kiosk-based desktops used for self-registration must print to a centrally located thermal printer. The kiosks are logged on as unique users without a common user group. The kiosks are in their own unique subnet.

According to VMware best practices, which location-based printing parameter will map the specific printer?

- A. Select Computer Name and specify the computer names of the kiosk desktops.
- B. Select IP Range and specify the IP range of all the kiosk desktops.
- C. Select User and specify the user IDs of the kiosk users.
- D. Select MAC Address and specify the MAC addresses of the kiosk desktops.

Answer: B

Question No : 51 - (Topic 1)

Where must the location based printer DLL be registered when configuring location based printing?

- A. View Client system
- B. Windows print server
- C. Active Directory server
- D. View Connection Server

Answer: C

Question No : 52 - (Topic 1)

What is the name of the group policy setting that must be configured to enable location based printing?

- A. AutoConnect Map Additional Printers for VMware View
- B. Automated Printing Settings for VMware View
- C. Server Based Printing for VMware View
- D. Thinprint Location Based Printing for VMware View

Answer: A

Question No : 53 - (Topic 1)

An IT company requires its field employees to use their View desktops in local mode only. The View administrator sets the Local Mode policy for the Field Employee pool to Allow, but notices that some users are not exclusively using local mode.

Which additional step should the administrator perform to ensure that field agents use local mode only?

- A. set the Remote Mode View policy for the Field Agent pool to Deny
- B. set the Local Mode policy for the Field Agent pool to Local Only
- C. set the View Transfer Server to Local Only
- D. ensure the users perform a rollback of the local View desktop to reset its state

Answer: A

Question No : 54 - (Topic 1)

A View administrator needs to reduce the size of local mode desktop downloads.

Which connection server setting should be enabled?

- A. use linked clones for local mode operations
- B. use network optimization for local mode operations
- C. use deduplication for local mode operations
- D. use compression for local mode operations

Answer: D

Question No : 55 - (Topic 1)

A newly created View Composer base image is unavailable for checkout in a local mode-enabled linked clone desktop pool.

Which task must be performed on the base image so that it is available for checkout?

- A. convert the View Composer base image to a template in vCenter Server
- B. publish the View Composer base image as a package in the Transfer Server repository
- C. copy the View Composer base image to a Transfer Server via vCenter Server
- D. publish the View Composer base image as a full virtual machine

Answer: B

Question No : 56 - (Topic 1)

An administrator creates a kiosk mode desktop. The client device is unable to connect to the desktop.

Which action should the administrator take to resolve this issue?

- A. activate kiosk mode for each View Connection Server
- B. add the cm- or Custom- prefix to the AD account for the client device
- C. enable kiosk mode on the desktop through View Administrator
- D. create AD accounts for all users authorized to use the desktop

Answer: B

Question No : 57 - (Topic 1)

A View environment requires a thin client to automatically connect to a kiosk mode desktop without a password.

How can the administrator accomplish this?

- A. configure the assigned desktop in Unsecured mode
- B. add the thin client MAC address to the Kiosk folder on the View Connection Server
- C. disable password checking from the View Administrator
- D. set an automatically-generated password for the client account

Answer: D

Question No : 58 - (Topic 1)

Which View feature is used to authenticate a Kiosk Mode connection by client device rather than end user?

- A. Device Verification
- B. Flexible Authentication
- C. Kiosk Security
- D. vShield Endpoint Security

Answer: B

Question No : 59 - (Topic 1)

A system administrator has an existing ThinApp package that needs to be integrated with View for deployment.

When rebuilding the corresponding ThinApp package, which line does the system administrator need to add to the package.ini file to enable application streaming?

- A. ThinAppStreaming=0
- B. MSIStreaming=1
- C. MSIStreaming=0
- D. ThinAppStreaming=1

Answer: B

Question No : 60 - (Topic 1)

A system administrator has an existing ThinApp package that needs to be integrated with View 5.0 for deployment.

When rebuilding the corresponding ThinApp package, which line does the system administrator need to add to the package.ini file to enable full deployment of the application

to view users?

- A. MSIStreaming=1
- B. ThinAppStreaming=1
- C. MSIStreaming=0
- D. ThinAppStreaming=0

Answer: C

Question No : 61 - (Topic 1)

A ThinApp administrator needs to capture an application that leverages ODBC connections.

Which step should the administrator take during the ThinApp capture and build process to enable this functionality inside the ThinApp package?

- A. configure the ODBC connections before starting the capture process
- B. configure the ODBC connections during the capture process
- C. configure the ODBC connections as an upgrade patch to a completed ThinApp application
- D. configure the ODBC connections outside the capture process on the client workstations

Answer: B

Question No : 62 - (Topic 1)

A ThinApp administrator needs to capture an application that leverages .NET 2.0 as a prerequisite. The enterprise has standardized on .NET 2.0 on the corporate desktop image.

Which step should the administrator take during the ThinApp capture and build process to enable the ThinApp package to leverage the .NET 2.0 instance installed on the corporate desktop images?

- A. install .NET 2.0 as part of the ThinApp capture process
- B. install .NET 2.0 as an upgrade patch to a completed ThinApp application
- C. install .NET 2.0 as part of the capture workstation before starting the ThinApp capture process

D. install .NET 2.0 outside the capture process on the client workstations

Answer: C

Question No : 63 - (Topic 1)

Which steps must a View administrator perform to configure View Persona Management with View desktops?

- A. Install the View Agent with the View Persona Management setup option on the replica.
- B. Install the View Agent with the View Persona Management setup option on the vCenter Server systems.
- C. Install the View Agent with the View Persona Management setup option on the virtual machine that is used as a parent or template.
- D. Install the View Agent on the virtual machine and enable the View Persona Management option on first boot.

Answer: C

Question No : 64 - (Topic 1)

In a View environment, users access both View and physical desktops. Users access their View desktops with View Persona Management and their standard desktops with Windows roaming profiles.

What is the recommended configuration?

- A. Disable profile sharing in the persona management folder.
- B. Enable profile sharing in the persona management folder.
- C. Use different profiles for the two desktop types.
- D. Use the same profile for the two desktop types.

Answer: C

Question No : 65 - (Topic 1)

View Persona Management has been installed and enabled on your virtual machines in

your environment.

What is recommended for Persona Management backup?

- A. Snapshot the Desktop and then backup the profile.
- B. Set the Persona Management software to enable before backing up.
- C. Enable the Persona Management plugin in the vStorage APIs for Data Protection.
- D. Do not use backup software products like MozyPro or Windows Volume backup services.

Answer: D

Question No : 66 - (Topic 1)

A View deployment consists of ThinApp applications as well as other types of applications. The administrator wants to configure the user profiles to include the ThinApp sandbox folders.

Which action will meet this requirement?

- A. Enable the Folders to background download group policy settings and add the user's files.
- B. Enable the Folders to background download group policy settings and add the ThinApp sandbox folders.
- C. Enable the Files and folders to preload group policy settings and add the ThinApp sandbox folders during the login.
- D. Enable the Roam Local Settings folders to preload group policy settings and add the ThinApp sandbox folders

Answer: B

Question No : 67 - (Topic 1)

What can an administrator specify within a user's persona that are managed by Windows roaming profiles functionality instead of View Persona Management?

- A. ADM Template
- B. Files and Folders

- C. Network Share
- D. Persona Repository

Answer: B

Question No : 68 - (Topic 1)

View Persona Management has been installed on the virtual machines in a View environment.

How often are changes in the local profile copied to the remote repository by default?

- A. Every 5 minutes
- B. Every 10 minutes
- C. During login and every 10 minutes after login
- D. An interval must be specified by the administrator

Answer: B

Question No : 69 - (Topic 1)

View Persona Management has been installed and enabled on your virtual machines. The administrator wants to manage the View user personas.

Which statement is true?

- A. The administrator can manage View user personas by logging into the remote repository.
- B. The administrator can manage View user personas within the Folder view of the View Administrator.
- C. The administrator cannot manage View user personas by adding the ADM Template file to Active Directory.
- D. The administrator cannot manage View user personas by using the Windows roaming profiles functions.

Answer: D

Question No : 70 - (Topic 1)

An administrator must create a Terminal Services pool as an interim solution for users that are to be migrated to View. There are two Connection Servers in the environment, one of which is paired with a Security Server to enable users to access their virtual desktops remotely. The Terminal Servers may not be accessed over the internet.

Which configuration option meets the connection requirements?

- A. Set the tag on the pool to match the tag on the internal connection server.
- B. Set the pool to allow users to select either PCoIP or RDP as the display protocol.
- C. Disable access to the pool on the security server.
- D. Enable the Windows firewall on Terminal Server.

Answer: A

Question No : 71 - (Topic 1)

A View administrator needs to limit the disk space growth of the virtual machines in a linked clone desktop pool due to Windows temporary files and system page file.

Which initial pool setting will help limit disk space growth?

- A. Make the system disk a persistent disk
- B. Enable disposable file redirection
- C. Enable paging file redirection
- D. Configure a RAM disk

Answer: B

Question No : 72 - (Topic 1)

A View administrator is creating a linked clone pool of desktops that delete or refresh after logoff.

Which storage overcommit level should be used to maximize use of the datastore while retaining a reserve?

- A. Conservative
- B. Aggressive
- C. None
- D. Moderate

Answer: D

Question No : 73 - (Topic 1)

An organization has an automated desktop pool. During logon at the beginning of a shift, most users are complaining that it is taking too long for the desktop to appear. All desktops will eventually log on if given enough time.

Which change will improve the connection times at the beginning of a shift?

- A. Number of desktops - minimum
- B. Number of spare, powered-on desktops
- C. Number of concurrent power operations
- D. Number of desktops - maximum

Answer: B

Question No : 74 - (Topic 1)

An organization has an automated desktop pool with the following settings:

- Number of desktops (minimum) = 200
- Number of desktops (maximum) = 500
- Number of spare, powered-on desktops = 5

Some users are powering off their virtual desktops, which is creating a situation where not enough desktops are powered on to service the number of users.

Which action will resolve the issue?

- A. Change vdm_agent.adm to enable Ensure desktops are always powered on.
- B. Change the Number of desktops (minimum) to match the Number of desktops

(maximum).

- C. Change Remote Desktop Power Policy to Ensure desktops are always powered on.
- D. Change vdm_client.adm to disable Power off.

Answer: C

Question No : 75 - (Topic 1)

Which service or task should be disabled to minimize unneeded OS disk growth on a heavily used linked clone pool that is refreshed daily using View Composer?

- A. System Restore
- B. Hibernation
- C. Scheduled Disk Defragmentation
- D. Automated registry backups

Answer: A

Question No : 76 - (Topic 1)

Once a virtual machine has been prepared and View Agent installed, which additional step must be completed for the virtual machine to be considered a parent virtual machine?

- A. Move the virtual machine into the Parent Virtual Machine folder in vCenter Server.
- B. Convert the virtual machine to a template.
- C. Take a snapshot of the virtual machine.
- D. Install the Linked Clone Agent in the virtual machine.

Answer: C

Question No : 77 - (Topic 1)

To use previously created desktop VMs, which type of desktop pool should the View administrator create?

- A. Automated desktop pool
- B. Manual desktop pool

- C. Persistent desktop pool
- D. Custom desktop pool

Answer: B

Question No : 78 - (Topic 1)

Which desktop source is used in an automated pool that contains full virtual machines?

- A. A cloned copy of a physical Windows desktop
- B. A Windows XP ISO
- C. A virtual machine template
- D. A snapshot of a parent virtual machine

Answer: C

Question No : 79 - (Topic 1)

Which type of pool uses the least amount of storage?

- A. An automated pool that contains full virtual machines with thin-provisioning enabled
- B. A manual pool
- C. A linked clone automated pool with thin-provisioning enabled
- D. A linked clone automated pool

Answer: D

Question No : 80 - (Topic 1)

Which configuration option must be provided to the wizard when creating Automated Pools with Full Virtual Machines?

- A. Active Directory domain
- B. Default image
- C. Redirect Windows profile to persistent disks
- D. User assignment type

Answer: D

Question No : 81 - (Topic 1)

Why must an unmanaged desktop be registered with View Connection Server before it can be added to a pool?

- A. The View Composer will not be able to create linked clones in the pool.
- B. The desktop must be known to vCenter Server to be seen by the Connection Server.
- C. The View Connection Server must remotely install View Agent before adding the desktop to the pool.
- D. The View Connection Server must know the FQDN or IP address of the desktop before it can add it as a source.

Answer: D

Question No : 82 - (Topic 1)

A desktop administrator creates a manual pool and determines that one of the unmanaged desktops does not appear in the list of machines that can be added.

How can the desktop administrator verify that the desktop is registered?

- A. Review the list of desktops in View Administrator.
- B. Review registration events in the events database.
- C. Review the Registered Desktop Sources page in View Administrator.
- D. Review the list of pools in View Administrator.

Answer: C

Question No : 83 - (Topic 1)

Multiple users need to be able to access a physical desktop that has specialized software. All data needed by the users is stored on a network share.

What must the administrator do so that the users can access the physical desktop in a

View environment?

- A. A dedicated-assignment automatic pool must be created.
- B. A floating-assignment manual pool that includes only this desktop must be created.
- C. An automatic pool with manual-assignment of names must be created.
- D. A Terminal Services pool that includes the desktop must be created.

Answer: B

Question No : 84 - (Topic 1)

Which action must the desktop administrator take to use PCoIP with a physical desktop in a manual pool?

- A. Install Teradici hardware on the physical desktop.
- B. Select the PCoIP Server feature during View Agent installation so that the PCoIP software will be installed.
- C. Select PCoIP as the default remote display protocol when configuring the manual pool.
- D. Disable RDP so that only PCoIP is available.

Answer: A

Question No : 85 - (Topic 1)

When creating a Manual Pool, what is required to use PCoIP with a desktop source not managed by vCenter Server?

- A. Teradici hardware must be installed on the desktop source.
- B. The VMware View Agent must be installed on the desktop source.
- C. The VMware PCoIP agent must be installed on the desktop source.
- D. Windows 7 with Hardware Acceleration must be installed on the desktop source.

Answer: A

Question No : 86 - (Topic 1)

An administrator is building a new desktop source for use in a linked clone pool.

Which step must be performed last?

- A. Clone the desktop source.
- B. Create a new snapshot.
- C. Install View Agent.
- D. Install VMware Tools.

Answer: B

Question No : 87 - (Topic 1)

An administrator is creating a new desktop source using Windows 7 and would like to ensure it properly activates.

Which activation technology must be used for a linked clone to properly activate?

- A. FLEX
- B. KMS
- C. MAC
- D. MAK

Answer: B

Question No : 88 - (Topic 1)

A View administrator creates a new pool for the Call Center using QuickPrep. View Composer creates the replica with linked clones but then immediately deletes them.

What should the administrator verify?

- A. The View Composer user has the correct Active Directory permissions.
- B. The View administrator assigned to the OU has the correct permissions.
- C. The View Composer user has the correct View Connection Server permissions.
- D. The View Composer user has the correct vCenter Server permissions.

Answer: A

Question No : 89 - (Topic 1)

While attempting to re-install View Composer, a View administrator receives error message 28014. The vminst.log log provides the following details:

svm: 08/05/10 09:04:43 ERROR: SvcCfgHelper_UnbindCertificate() returned value 8

f3 svm: 08/05/10 09:04:44 Certificate can not be found.

What is the likely cause of the problem?

- A. The SSL Certificate is already bound to the vCenter User.
- B. The SSL Certificate is already bound to the Composer TCP port.
- C. The SSL Certificate is already bound to the Composer User.
- D. The SSL Certificate is already bound to the vCenter UDP port.

Answer: B

Question No : 90 - (Topic 1)

While a View administrator is attempting to install View Composer, an error displays:

28014: Unable to close the firewall

The installation automatically rolls back.

What should the administrator do to run the installer successfully?

- A. Right-click the Composer installer and choose Run as user.
- B. Start the firewall service.
- C. Right-click the Composer installer and choose Run as administrator.
- D. Stop the firewall service.

Answer: C

Question No : 91 - (Topic 1)

A View administrator attempting to install View Composer receives the error:

The database cannot be found or a connection cannot be established. Check the DSN name to ensure that it is correctly installed.

The View administrator verifies that the DSN name, the username, and the password for the DSN are correct.

Which troubleshooting step should the View administrator take next?

- A. Verify that the ODBC is a file DSN.
- B. Verify that the ODBC is a system DSN.
- C. Verify that the database has the correct permissions.
- D. Verify that the user has the correct permissions.

Answer: B

Question No : 92 - (Topic 1)

An administrator is installing View Composer on an existing vCenter Server system. The databases are stored on a separate virtual machine running Microsoft SQL Server. A service account has been created in Active Directory and granted administrator and database owner rights.

During the installation, clicking the Test Connection button in the ODBC entry is successful but View Composer cannot connect to the database and the install will not continue.

What is the cause of this problem?

- A. The DNS entry for the database server is missing or incorrect.
- B. The firewall on the SQL server is blocking traffic on port 1433.
- C. Windows authentication is not supported when the database is on a separate server.
- D. The password used by the ODBC connection does not meet the complexity rules defined in the SQL Server security configuration.

Answer: C

Question No : 93 - (Topic 1)

Due to site security requirements, a View environment needs the ability to determine if a

user has logged in to a specific desktop at any time during the previous two months. Upon viewing the Events page in View Administrator, the administrator finds that only the previous four weeks of events are shown.

What should the administrator verify to diagnose the issue?

- A. The View Administrator is configured to display events for at least two months.
- B. The records in the events database for the time period specified have not been purged.
- C. The database server has sufficient permissions to record the events.
- D. The events database exists.

Answer: A

Question No : 94 - (Topic 1)

An administrator is setting up the View Event Database using Microsoft SQL Server for the data. After configuring the settings in View Administrator, the following error is displayed:

An error occurred while attempting to configure the database. Double check the database parameters and ensure that the database is not down, restarting, or otherwise unavailable.

Which configuration steps could help correct this issue?

- A. Add a System ODBC entry for the database on each View Connection Server.
- B. Install the 64-bit SQL Server Native Client on each View Connection Server.
- C. Enable Windows Authentication in the Microsoft SQL Server configuration and create a user account in Active Directory to be used by the event database.
- D. Enable SQL Server Authentication and Windows Authentication in the Microsoft SQL Server configuration and create a SQL Server user account for the database.

Answer: D

Question No : 95 - (Topic 1)

An administrator is setting up the View Event Database using a Microsoft SQL Server for the data. After configuring the settings in View Manager, the following error is displayed:

An error occurred while attempting to configure the database. Double check the database parameters and ensure that the database is not down, restarting, or otherwise unavailable.

Which configuration changes could be made to help correct this issue?

- A. Enable IPAll TCP dynamic ports in the Microsoft SQL Server.
- B. Enable TCP Port 1433 in the TCP/IP properties of the Microsoft SQL Server.
- C. Enable Dynamic TCP Ports starting at 53006 in the TCP/IP Properties of the Microsoft SQL Server.
- D. Open the ICMP ports on the firewall of the Microsoft SQL Server to allow the View Connection server to ping for status.

Answer: B

Question No : 96 - (Topic 1)

An administrator has configured the View Event Database on a heavily used View environment. After 90 days the Event Database stopped adding data, even though no configuration changes were made.

What will resolve the issue?

- A. Check the password restrictions on the account used by the View Event Database.
- B. Restart the SQL Server Agent to re-establish the lost connection to the database server.
- C. Restart the View Connection Server to re-establish the lost connection to the database server.
- D. Click the Clear button in the View Administrator Event Database configuration to free up additional space in the database tables.

Answer: A

Question No : 97 - (Topic 1)

Ten physical desktops that use a specialized application were migrated to the View environment as linked clones. A newly-created parent virtual machine mimics the original software configuration. The configuration was tested extensively before deployment. Now, whenever a user logs in to a desktop and starts the application, it displays an error that says the SID for this desktop has already been assigned.

Which task should the administrator perform to resolve the problem?

- A. Change the pool specification so all the users of this application are using the same linked clone desktop.
- B. Recreate the base image and edit the linked clone pool to use this new image.
- C. Verify that the customization specification in vCenter Server generates a new SID and continues to use QuickPrep for guest customization.
- D. Create another linked clone pool using the same parent virtual machine and snapshot with Sysprep.

Answer: D

Question No : 98 - (Topic 1)

A desktop administrator is creating a virtual desktop to be used as a template for linked clones.

An application that requires domain authentication is being installed, so the virtual desktop is added to the domain before installation. After the setup is complete, the administrator powers off the virtual desktop and creates the template. When a pool is created using this template, the desktops fail to finish customization. One of the desktop Event Viewer logs shows the following message:

getTrustedDomains: Cannot find the primary domain name

What is the cause of this problem?

- A. The system running View Composer is not part of the target domain.
- B. The virtual desktop was not removed from the domain before it was used to create a template.
- C. Windows Firewall was left enabled on the virtual desktop before it was used to create a template.
- D. The domain was not added to the Domain List in View Administrator.

Answer: B

Question No : 99 - (Topic 1)

An administrator is deploying and deleting multiple pools of linked clone desktops during a testing phase. During the provisioning of the last pool, the desktops remain in the Customizing state for a long time. A red X appears on the icon next to the pool name, and the pool is disabled.

What is the most likely cause of the problem?

- A. An IP address cannot be assigned to a desktop.
- B. There is insufficient space on the datastore.
- C. The replica image is corrupted.
- D. The parent virtual machine has been deleted.

Answer: A

Question No : 100 - (Topic 1)

An administrator has created a new linked clone pool and the virtual machines in the pool are not finishing customization. After reviewing the agent logs, it is determined that an initialization state error has occurred.

What causes this failure?

- A. The View Agent's attempt to assign the desktop failed.
- B. The View Agent's attempt to contact ADAM failed.
- C. The View Agent's attempt to entitle the desktop failed.
- D. The View Agent's attempt to join the domain failed.

Answer: D

Topic 2, Volume B

Question No : 101 - (Topic 2)

A View administrator assigns prescribed vCenter Server permissions to a vCenter Server role and associates the role with a domain user account named viewadmin. This account is used by View Connection Server for vCenter Server operations.

The administrator creates and provisions two dedicated-assignment automatic pools that use templates, and everything works as expected. View Composer is enabled and a linked clone pool is configured. The linked clone provisioning operation aborts with errors in the event log. The errors indicate that there are insufficient permissions.

What is the likely cause of the problem?

- A. The user account used by View Composer lacks sufficient vCenter Server permissions.
- B. QuickPrep could not create a unique SID for each desktop.
- C. The AD Organizational Unit was not entered in the Guest Customization page.
- D. The customization specification was corrupted.

Answer: A

Question No : 102 - (Topic 2)

A View vCenter Server role is created that includes all of the required View Administrator and local mode vCenter Server privileges. The View administrator deploys a linked clone, dedicated-assignment pool. View Client with Local Mode is installed on all client systems. Desktops have been correctly provisioned and can be accessed remotely. However, when a user tries to check out a desktop, the operation fails due to insufficient permissions.

What is the likely cause of the problem?

- A. The Active Directory accounts of the users do not have sufficient privileges to start View Client.
- B. The vCenter Server role lacks privileges for View Composer.
- C. The Active Directory user account of the View administrator lacks the vCenter Server privileges.
- D. View Client users are not members of the Remote Desktop Users Group.

Answer: B

Question No : 103 - (Topic 2)

An administrator user group named Restricted Users is created in a View environment to manage a specific folder. After a few weeks, the users in that group complain that they no longer have access to View Administrator. Further investigation indicates that the group no longer exists. Logs show that the group was not removed by any View administrators.

What would cause the group to disappear?

- A. The group was removed in Active Directory.
- B. The group was set with an expiration date which was exceeded.
- C. The only permission for the Restricted Users group was removed.
- D. The permission was set with an expiration date which was exceeded.

Answer: C

Question No : 104 - (Topic 2)

Why would a View Administrator user be unable to delete a permission on an object?

- A. The user was created with the No Modify option.
- B. The permission was inherited from a parent object.
- C. The permission was set with the Persistent setting.
- D. The user is not part of the View Administrator group.

Answer: B

Question No : 105 - (Topic 2)

A View administrator has deleted a linked clone pool, and communication between the Connection Server and the vCenter Server is lost. The administrator notices that the virtual machine associated with the replica still remains in the inventory view of vCenter Server and cannot be deleted.

Which step must be taken to resolve this problem?

- A. Run the sviconfig command with the unprotectentity option on the vCenter Server to remove the protection from the linked clone object.
- B. Run the sviconfig command with the removeprotectentity option on the vCenter Server to remove the protection from the linked clone object.
- C. Run the sviconfig command with the removeprotectentity option on the View Connection Server to remove the protection from the linked clone object.
- D. Run the sviconfig command with the unprotectentity option on the View Connection Server to remove the protection from the linked clone object.

Answer: A

Question No : 106 - (Topic 2)

A View administrator needs to restore an environment following a crash of the View Connection servers. After the restore is done, the View administrator notices that some of

the desktops of a pool are missing.

What is likely the cause of this issue?

- A. The pool was refreshed after the restore.
- B. The pool was recomposed before the restore but after the backup.
- C. The pool was recomposed after the restore.
- D. The pool was refreshed before the restore but after the backup.

Answer: B

Question No : 107 - (Topic 2)

An administrator has configured View with a single Connection Server and is adding a Replica Connection Server. After installing the Replica Connection Server the following symptoms are observed.

- New pools disappear after creation or do not appear.
- Provisioning tasks do not start and no activity is observed in vCenter.
- Both Connection Servers are visible under the Servers page in View Administrator on the Replica Connection Server.
- Only the original Connection Server is visible under the Servers page in View Administrator on the original Connection Server.

What is the likely source of this problem?

- A. Not enough time has passed for replication to complete.
- B. DNS entries for the Connection Servers are missing or incorrect.
- C. View Composer must be restarted after a Replica Connection Server is added.
- D. Not enough memory is available to the View Connection Server to complete the provisioning tasks.

Answer: B

Question No : 108 - (Topic 2)

In the View Administrator Dashboard, a datastore is highlighted as being unavailable, even

though there are several virtual desktops active and running from this datastore.

What is the cause of this unavailable status?

- A. Some, but not all, vSphere hosts in the cluster have the datastore defined.
- B. The datastore was out of space and the error has not yet been cleared in vCenter Server.
- C. View Composer provisioning has been manually disabled for the datastore in one or more pools.
- D. The datastore has been configured for High Availability (HA) Heartbeat which is not compatible with View Composer.

Answer: A

Question No : 109 - (Topic 2)

An organization has two large office locations connected by a WAN connection that is already heavily saturated with traffic.

An administrator installs a Master View Connection Server at site A and a Replica Connection Server at site B. For desktops that are deployed the displayed state or availability is incorrect in many cases.

What causes these inconsistencies?

- A. DNS entries for the Connection Servers are missing or incorrect.
- B. View Connection Servers in a single pod cannot be deployed across a WAN link.
- C. Firewalls between the sites must allow TCP port 4001 for synchronization.
- D. At least one shared datastore must be used between the sites for pool status synchronization.

Answer: B

Question No : 110 - (Topic 2)

An administrator has View installed in a LAN environment with tunneling disabled. When users connect from the View Client on a Windows 7 laptop, they can authenticate and select a pool, but receive a black screen when connecting with PCoIP. After 10 seconds,

their session automatically disconnects. RDP users are not affected.

What port is likely being blocked by a firewall to cause this issue?

- A. Port 50002/UDP
- B. Port 4172/UDP
- C. Port 3389/TCP
- D. Port 443/TCP

Answer: B

Question No : 111 - (Topic 2)

An administrator has View installed in a LAN environment with tunneling disabled. Users are reporting that when they try to cut-and-paste from their View Desktop to the endpoint device, the operation does not work.

What setting can be used to enable this feature?

- A. Change the Configure Clipboard Redirection option in the PCoIP Group Policy settings to Enabled in Both Directions.
- B. Change the following lines in the VMX of the virtual desktop:
Isolation.tools.copy.disable=false
- C. Cut and Paste from the virtual desktop to the endpoint cannot be enabled due to security concerns.
- D. Enable the Bidirectional Cut and Paste option under the PCoIP settings for the desktop pool in View Manager, and refresh the pool.

Answer: A

Question No : 112 - (Topic 2)

An administrator has View installed in a WAN environment with tunneling enabled using two Security Servers and a load balancer.

What value must be entered in the PCoIP External URL to support PCoIP connections through the Security Server?

- A. The fully qualified external name of the load balancer

- B. The fully qualified external name of the Security Server
- C. The external IP address and port of the Security Server
- D. This field should be left blank when using a load balancer with PCoIP

Answer: C

Question No : 113 - (Topic 2)

Several users are connecting to View Desktops running Windows 7 across a T1 link to a remote data center using PCoIP Zero Clients and iPad tablet devices.

What PCoIP optimization would reduce the overall bandwidth required to support these users?

- A. Enable Client Side Caching in the View Client options on the devices.
- B. Enable the Lossless Codec in the PCoIP Group Policy Settings.
- C. Enable Support for MMR in the View Agent installation options.
- D. Turn off Build to Lossless in the PCoIP Group Policy Settings.

Answer: D

Question No : 114 - (Topic 2)

Which PCoIP Group Policy template option would provide the optimal graphic performance in a virtual desktop?

- A. pcoip.minimum_frame_rate
- B. pcoip.maximum_image_quality
- C. pcoip.maximum_initial_image_quality
- D. pcoip.minimum_quality

Answer: C

Question No : 115 - (Topic 2)

An administrator is optimizing his View environment. Users are reporting that they are experiencing poor performance on their View desktops.

Which configuration in the PCoIP Group Policy Template would improve performance?

- A. Add a value to the PCoIPImaging_Policy.
- B. Add a value to the PCoIPTcpServer_Policy.
- C. Change the PCoIPEncryption_Policy pcoip.enable_salsa20_256_round12 to 1.
- D. Change the PCoIPMtuSize_Policy to a value of 1500 from 1300

Answer: A

Question No : 116 - (Topic 2)

The administrator has enabled 3D for the View desktops and they are running dual monitors on the client. Users are able to login and interact with their desktops but the 3D feature is not working.

What setting does the administrator need to verify to enable 3D?

- A. The desktops must have hardware v7.x or later.
- B. The max resolution per monitor cannot exceed 1920x1200.
- C. The pool is configured to enable 3D acceleration.
- D. The VRAM size is not set to 256MB for your desktop.

Answer: B

Question No : 117 - (Topic 2)

An administrator is attempting to troubleshoot an external user who cannot connect to the View Desktop through the PCoIP Secure Gateway.

The following is observed:

SConnections with RDP succeed

- Connections fail with PCoIP to both the Security Server and Connection Server
- View Client receives the error: Unable to connect to desktop, a common encryption protocol is not available.

What configuration change does the administrator need to make to restore PCoIP

connectivity?

- A. Update the View Client settings to use the AES-128 encryption algorithm.
- B. Update the pcoip.adm Group Policy template to enable the AES-128 encryption algorithm.
- C. Update the vdm_agent.adm Group Policy to enable Salsa-256 encryption algorithm.
- D. Update the View Agent to include Salsa-256 in the trusted.cyphers setting.

Answer: B

Question No : 118 - (Topic 2)

The View administrator expands the existing View environment by adding a third View Replica Connection Server. The desktop administrator logs in to the replica and discovers that none of the pools or desktops are visible.

What is the likely cause of the problem?

- A. The Active Directory Application Mode has not been installed on the Replica Server.
- B. The Active Directory Lightweight Directory Services has not been installed.
- C. The Active Directory Application Mode instance has not completed replication.
- D. The primary domain controller has not completed replication of the Global Catalog.

Answer: C

Question No : 119 - (Topic 2)

A single View Connection Server is being used for both internal and external access to View desktops. Internal users are able to connect without issue. However, external users receive an error message indicating that the Connection Server cannot be reached. The corporate firewall configuration has been verified and all the required ports are open.

What is the likely cause of the problem?

- A. Port 443 is not open between vCenter and the View Connection Server.
- B. The external URL is not configured correctly in View Administrator.
- C. The Use Secure Tunnel connection to Desktop is checked in View Administrator.
- D. The Connection Server is not on an externally routable network.

Answer: B

Question No : 120 - (Topic 2)

A user attempts to connect to a desktop from outside of the corporate network through a View 5.0 Security Server, but for several seconds sees only a black screen that is followed by an error message from the View Client:

The connection to the remote computer ended.

What is the likely cause of this error?

- A. The Security Server is not configured to accept PCoIP connection remotely.
- B. The External URL for the VMware Security Server is set to an incorrect address.
- C. The VPN connection was not established prior to the user connecting to the View environment.
- D. The External URL for the VMware Security Server is set using an incorrect port.

Answer: C

Question No : 121 - (Topic 2)

Following a recent upgrade to the View environment to View 5.0, the option to set the PCoIP External URL of the Security Server is not available from the View Manager Interface.

What is the likely cause of the problem?

- A. The View Security Server was not upgraded to version 5.0.
- B. The External URL should have been set during the installation of the View Security Server.
- C. The View Security Server service is not running on the View Connection Server.
- D. The External URL was not configured from the View Security Server Management Interface.

Answer: A

Question No : 122 - (Topic 2)

A group of desktop users report that when they attempt to log in to their corporate View environment, they are unable to establish a secure connection to the Security Server.

What should the administrator do to determine the cause of the connection problem?

- A. Verify that the desktop pool is enabled for connections.
- B. Confirm that the external URL maps to an internal IP address.
- C. Examine the log files on both the Connection Server and the Security Server.
- D. Verify that the Security Server and the domain controller are communicating.

Answer: C

Question No : 123 - (Topic 2)

A View Security Server has been configured to allow external RDP access using SSL to the internal View Desktops. Users are reporting that they are unable to connect.

Which configuration setting should the administrator verify to diagnose this problem?

- A. RDP access is enabled on the Security Server.
- B. The remote connection timeout is set to 10.
- C. Port 443 is open on the firewall.
- D. Port 3389 is disabled on the firewall.

Answer: C

Question No : 124 - (Topic 2)

The Windows XP virtual machine with View Persona Management is not functioning properly. When the users are logging off they do not always capture the latest changes to their desktop environment.

What configuration step was missed?

- A. The Win7/Vista agent was not installed.
- B. UPHClean was not installed in the image.

- C. Windows XP was not upgraded to Service Pack 2.
- D. The user does not have the proper rights on the network server.

Answer: B

Question No : 125 - (Topic 2)

View users are complaining of slow launch times for their ThinApp applications.

Which action will ensure that the users have the fastest login times as well as application launches?

- A. Enable the Files and Folders to preload group policy.
- B. Enable the Folders to background download group policy.
- C. Execute your ThinApp applications with fast cache enabled.
- D. Verify the ThinApp repository is on SSD drives.

Answer: B

Question No : 126 - (Topic 2)

A system administrator needs to provide a service pack update to a currently deployed ThinApp package.

Which ThinApp feature enables a deployed ThinApp package to automatically contact an HTTP or UNC location for updates?

- A. ThinApp AppLink
- B. ThinApp Update Manager
- C. ThinApp AppSync
- D. ThinApp Sync Manager

Answer: C

Question No : 127 - (Topic 2)

A system administrator is deploying a legacy ThinApp package to production users when

the original install media for the legacy application disappears.

Which ThinApp feature will enable the system administrator to perform an update to an existing ThinApp package, integrate the update with the original ThinApp project, and then deploy the update across all users?

- A. Side by Side update
- B. SBmerge
- C. ThinApp Merge
- D. AppSync

Answer: B

Question No : 128 - (Topic 2)

A security audit of the View environment has determined that View Administrator sessions remain open indefinitely, which is flagged as a security vulnerability.

Which feature setting should be changed in View Administrator to address this issue?

- A. Set the timeout to 0 seconds.
- B. Clear the Enable Persistent Connection checkbox.
- C. Set the timeout to 1200 seconds.
- D. Clear the Enable Automatic Status Updates checkbox.

Answer: D

Question No : 129 - (Topic 2)

A university has implemented VMware View for classroom labs around the campus. The View administrator needs to ensure that students only print to the printer located in the lab. Each lab has a dedicated printer.

Which View feature meets these requirements?

- A. ThinPrint-based printing
- B. Location-based printing
- C. Central-based printing

D. Local-based printing

Answer: B

Question No : 130 - (Topic 2)

The VMware vCenter Server Appliance has been deployed using default settings.

What user name and password are used to log in to the administration interface to configure the appliance?

- A. The initial user name and password must be supplied on the first login attempt.
- B. The initial user name and password must be supplied during deployment.
- C. The initial user name is root and the password is blank.
- D. The initial user name is root and the password is vmware.

Answer: D

Question No : 131 - (Topic 2)

The VMware vCenter Server Appliance offers many features of the Windows application version.

Which of the following features is only available on the Windows application version of vCenter?

- A. Host Profiles
- B. Template and clone customization
- C. Active Directory authentication
- D. IPv6

Answer: D

Question No : 132 - (Topic 2)

When would a license server be configured for vCenter Server 5.x?

- A. When managing ESX 3.x servers
- B. When the vCenter Server Appliance is used
- C. Within the first 60 days
- D. A standalone license server is installed by default

Answer: A

Question No : 133 - (Topic 2)

Which tool defines the Image Profiles used with Auto Deploy?

- A. The vSphere PowerCLI add-deployrule cmdlet
- B. The vSphere PowerCLI new-deployrule cmdlet
- C. The vSphere CLI add-deployrule command
- D. The vSphere CLI new-deployrule command

Answer: B

Question No : 134 - (Topic 2)

What is the default VFAT scratch partition size for ESXi 5.x when installed on a USB drive?

- A. 600MB
- B. 544MB
- C. 4GB
- D. none

Answer: D

Question No : 135 - (Topic 2)

An administrator has deployed a vCenter Server to manage a virtual environment. The administrator has been asked to develop a plan for handling major upgrades to the application.

What should be included in the upgrade plan?

- A. Utilize vCenter Configuration Manager to upgrade the vCenter Server in place
- B. Install a new vCenter Server and import the information from the existing vCenter Server
- C. Install a new vCenter Server over the existing vCenter Server as an in-place upgrade
- D. Utilize Update Manager to upgrade the vCenter Server in place

Answer: C

Question No : 136 - (Topic 2)

An administrator is performing upgrades to ESXi 5.0 from ESX 3.x and ESX 4.x hosts.

What is true about this procedure?

- A. A direct, in-place upgrade can be performed only on ESX 4.1 and later hosts.
- B. ESX 3.x hosts can be upgraded, but require an upgrade to 4.x before 5.0.
- C. A direct, in-place upgrade can be performed only on ESX 4.5 and later hosts.
- D. A direct, in-place upgrade can be performed only on ESX 3.5 and later hosts.

Answer: B

Question No : 137 - (Topic 2)

An administrator is upgrading an ESXi 3.5 host to ESXi 5.x with an intermediate upgrade to 4.0 using Update Manager. The host has a single Intel Xeon processor, 4GB of RAM, and a VMFS datastore on a private, SAN-attached LUN.

What might cause the upgrade to be unsuccessful?

- A. The ESXi host has 4GB RAM.
- B. The ESXi host has one processor.
- C. ESXi 3.5 is not supported for upgrade.
- D. Update Manager cannot upgrade a previously upgraded host.

Answer: D

Question No : 138 - (Topic 2)

An administrator is performing an upgrade on an ESXi host.

Which step can be used to back up the host before the upgrade is performed?

- A. Using the vSphere Client connected to vCenter, right-click the host and choose Host Backup.
- B. Log into a vMA appliance and run vicfg-cfgbackup to save the ESXi host configuration.
- C. Using the vSphere Client connected directly to the host, right-click the host and choose Host Backup.
- D. Use PowerCLI to run the host-backup cmdlet to save the ESXi host configuration.

Answer: B

Question No : 139 - (Topic 2)

A virtual machine, VM21, will be migrated between two ESXi 5.x hosts, labeled ESXi01 and ESXi02. Each host has two vSphere Standard Switches (vSS), configured as follows:

1. vSwitch0 has a portgroup labeled Management and a portgroup labeled vMotion.
2. The Management portgroup contains a vmkernel port tagged for management traffic.
3. The vMotion portgroup contains a vmkernel port tagged for vMotion traffic.
4. vSwitch0 on ESXi01 has a single uplink attached to the 10.1.20.0/24 network.
5. vSwitch0 on ESXi02 has a single uplink attached to the 10.1.20.0/24 network.
6. Each host has a vSwitch1 with a Production portgroup used by virtual machine traffic.
7. Each vSwitch1 has an uplink attached to the 10.1.40.0/24 network.

What is true about migrating VM21 to the new host?

- A. vMotion would be supported in this configuration.
- B. Storage vMotion would not be supported in this configuration.
- C. vMotion would not be supported in this configuration.
- D. Storage vMotion would be supported if the storage device supports VAAI.

Answer: A

Question No : 140 - (Topic 2)

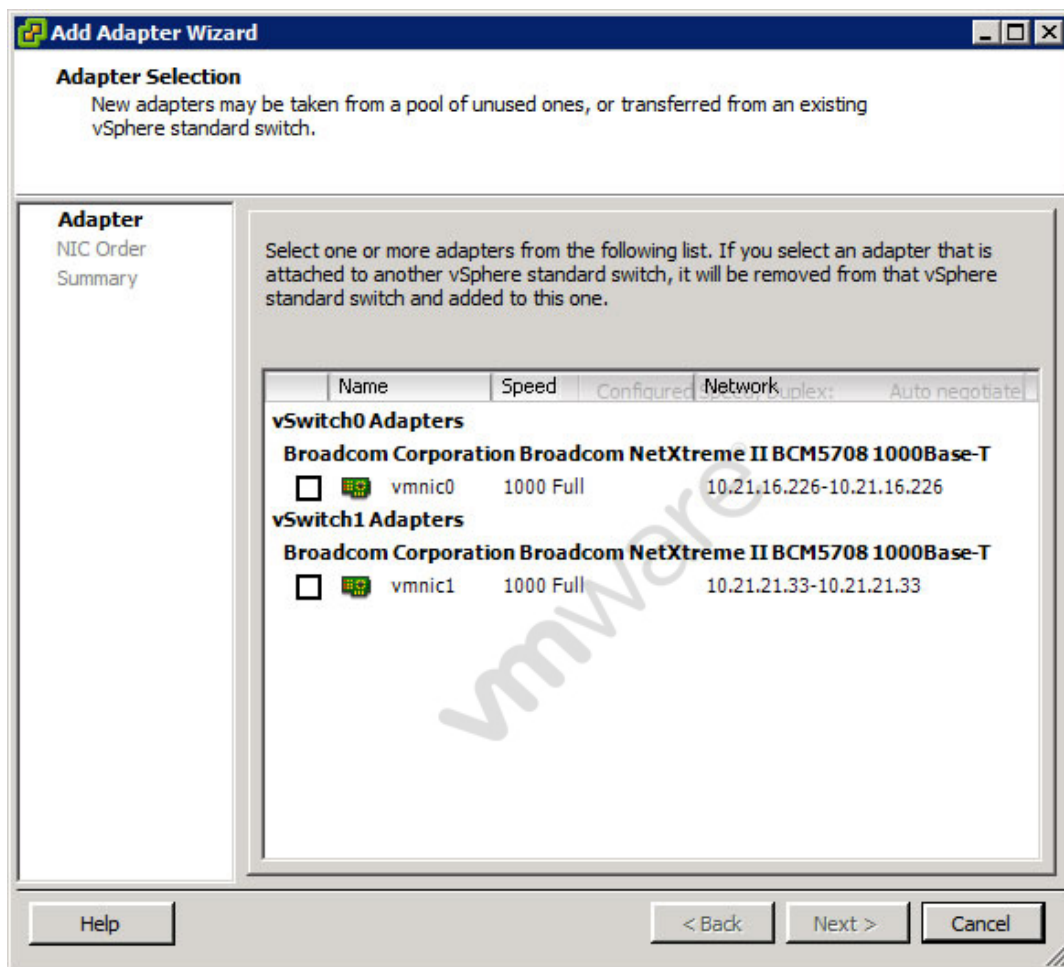
Which settings are required for virtual machine guest tagging for VLAN 100 in a vSphere 5 environment?

- A. Port Group configured for VLAN 100, physical switch configured as a VLAN trunk
- B. Port Group configured for VLAN 4095, physical switch configured as a VLAN trunk
- C. Port Group configured for VLAN 100, physical switch configured for VLAN 100
- D. Port Group configured for VLAN 4095, physical switch configured for VLAN 100

Answer: B

Question No : 141 - (Topic 2)

-- Exhibit --



-- Exhibit --

Click the Exhibit button.

An administrator has been tasked with adding a newly installed uplink to vSwitch1.

Based on the exhibit, what is a true statement about this environment?

- A. The server does not have available vSwitches to be assigned to this uplink.
- B. The available uplinks are not compatible with a standard vSwitch.
- C. The host needs a driver installed for the newly installed uplink.
- D. The current uplinks cannot be attached because they are in use by other port groups.

Answer: C

Question No : 142 - (Topic 2)

Assuming that VLANs are not configured, what is true about traffic from a virtual machine connected to a port group on a vSphere Standard Switch with no uplinks?

- A. The virtual switch will drop the packets if no uplink is present.
- B. Virtual machines on any vSphere Standard Switch on the same ESXi host can receive the traffic.
- C. Virtual machines in any port group on the virtual switch can monitor all of the traffic.
- D. vMotion will not migrate any Virtual machines connected to a port group on the virtual switch.

Answer: D

Question No : 143 - (Topic 2)

When you are configuring the vSwitch NIC teaming policy, what happens when the Failback option is set to Yes?

- A. A failed uplink will be left inactive upon recovery until another uplink fails.
- B. The physical switches are notified when a failover event occurs.
- C. The physical switches are notified when a failback event occurs.
- D. A failed uplink is returned to active duty immediately upon recovery.

Answer: D

Question No : 144 - (Topic 2)

A vSphere Standard Switch has been configured for IP-based load balancing using two uplinks. A new uplink is added to the vswitch.

What additional configuration is required by default?

- A. The uplink is placed in standby mode until it is added to the active NIC team.
- B. The uplink is considered active, but it will not participate in the active NIC team until assigned to a port group.
- C. The physical switch must add the new port to the existing 802.3ad group.
- D. The uplink is automatically marked as unused when it is added to IP-based NIC team.

Answer: C

Question No : 145 - (Topic 2)

In vSphere, a bound physical NIC can be configured to transmit and receive jumbo frames.

What is the default maximum transmission unit (MTU) in vSphere?

- A. 1500
- B. 5500
- C. 9000
- D. 9500

Answer: A

Question No : 146 - (Topic 2)

Virtual machine VM1 is unable to communicate with virtual machine VM2. Both virtual machines are connected to a portgroup named Production on vSwitch1 on host ESXi01. Which statement could explain why?

- A. The only vmnic connected to vSwitch1 on ESXi01 is set to unused

- B. The only vmnic connected to vSwitch1 on ESXi01 is set to standby
- C. Load balancing settings on Production do not match vSwitch1
- D. VM1 is configured for VGT, VM2 is configured for VST

Answer: D

Question No : 147 - (Topic 2)

Networking policies for a vSphere Standard Switch, such as traffic shaping and security, can be overridden on which vSphere elements?

- A. On the virtual machine
- B. On the physical switch
- C. On the physical network interface
- D. On the port group

Answer: D

Question No : 148 - (Topic 2)

Which type of port on a secondary private VLAN can communicate with promiscuous ports and other ports that share its VLAN tag?

- A. Isolated
- B. Promiscuous
- C. Community
- D. Trunked

Answer: C

Question No : 149 - (Topic 2)

Which network settings are only available with vSphere Distributed Switches?

- A. Jumbo Frames
- B. PVLAN
- C. Load Balancing

Microsoft Exams List

70-246 Dump PDF VCE	70-485 Dump PDF VCE	70-742 Dump PDF VCE	98-366 Dump PDF VCE
70-247 Dump PDF VCE	70-486 Dump PDF VCE	70-743 Dump PDF VCE	98-367 Dump PDF VCE
70-331 Dump PDF VCE	70-487 Dump PDF VCE	70-744 Dump PDF VCE	98-368 Dump PDF VCE
70-332 Dump PDF VCE	70-488 Dump PDF VCE	70-761 Dump PDF VCE	98-369 Dump PDF VCE
70-333 Dump PDF VCE	70-489 Dump PDF VCE	70-762 Dump PDF VCE	98-372 Dump PDF VCE
70-334 Dump PDF VCE	70-490 Dump PDF VCE	70-765 Dump PDF VCE	98-373 Dump PDF VCE
70-339 Dump PDF VCE	70-491 Dump PDF VCE	70-768 Dump PDF VCE	98-374 Dump PDF VCE
70-341 Dump PDF VCE	70-492 Dump PDF VCE	70-980 Dump PDF VCE	98-375 Dump PDF VCE
70-342 Dump PDF VCE	70-494 Dump PDF VCE	70-981 Dump PDF VCE	98-379 Dump PDF VCE
70-345 Dump PDF VCE	70-496 Dump PDF VCE	70-982 Dump PDF VCE	MB2-700 Dump PDF VCE
70-346 Dump PDF VCE	70-497 Dump PDF VCE	74-343 Dump PDF VCE	MB2-701 Dump PDF VCE
70-347 Dump PDF VCE	70-498 Dump PDF VCE	74-344 Dump PDF VCE	MB2-702 Dump PDF VCE
70-348 Dump PDF VCE	70-499 Dump PDF VCE	74-409 Dump PDF VCE	MB2-703 Dump PDF VCE
70-354 Dump PDF VCE	70-517 Dump PDF VCE	74-678 Dump PDF VCE	MB2-704 Dump PDF VCE
70-383 Dump PDF VCE	70-532 Dump PDF VCE	74-697 Dump PDF VCE	MB2-707 Dump PDF VCE
70-384 Dump PDF VCE	70-533 Dump PDF VCE	77-420 Dump PDF VCE	MB2-710 Dump PDF VCE
70-385 Dump PDF VCE	70-534 Dump PDF VCE	77-427 Dump PDF VCE	MB2-711 Dump PDF VCE
70-410 Dump PDF VCE	70-640 Dump PDF VCE	77-600 Dump PDF VCE	MB2-712 Dump PDF VCE
70-411 Dump PDF VCE	70-642 Dump PDF VCE	77-601 Dump PDF VCE	MB2-713 Dump PDF VCE
70-412 Dump PDF VCE	70-646 Dump PDF VCE	77-602 Dump PDF VCE	MB2-714 Dump PDF VCE
70-413 Dump PDF VCE	70-673 Dump PDF VCE	77-603 Dump PDF VCE	MB2-715 Dump PDF VCE
70-414 Dump PDF VCE	70-680 Dump PDF VCE	77-604 Dump PDF VCE	MB2-716 Dump PDF VCE
70-417 Dump PDF VCE	70-681 Dump PDF VCE	77-605 Dump PDF VCE	MB2-717 Dump PDF VCE
70-461 Dump PDF VCE	70-682 Dump PDF VCE	77-881 Dump PDF VCE	MB2-718 Dump PDF VCE
70-462 Dump PDF VCE	70-684 Dump PDF VCE	77-882 Dump PDF VCE	MB5-705 Dump PDF VCE
70-463 Dump PDF VCE	70-685 Dump PDF VCE	77-883 Dump PDF VCE	MB6-700 Dump PDF VCE
70-464 Dump PDF VCE	70-686 Dump PDF VCE	77-884 Dump PDF VCE	MB6-701 Dump PDF VCE
70-465 Dump PDF VCE	70-687 Dump PDF VCE	77-885 Dump PDF VCE	MB6-702 Dump PDF VCE
70-466 Dump PDF VCE	70-688 Dump PDF VCE	77-886 Dump PDF VCE	MB6-703 Dump PDF VCE
70-467 Dump PDF VCE	70-689 Dump PDF VCE	77-887 Dump PDF VCE	MB6-704 Dump PDF VCE
70-469 Dump PDF VCE	70-692 Dump PDF VCE	77-888 Dump PDF VCE	MB6-705 Dump PDF VCE
70-470 Dump PDF VCE	70-695 Dump PDF VCE	77-891 Dump PDF VCE	MB6-884 Dump PDF VCE
70-473 Dump PDF VCE	70-696 Dump PDF VCE	98-349 Dump PDF VCE	MB6-885 Dump PDF VCE
70-480 Dump PDF VCE	70-697 Dump PDF VCE	98-361 Dump PDF VCE	MB6-886 Dump PDF VCE
70-481 Dump PDF VCE	70-698 Dump PDF VCE	98-362 Dump PDF VCE	MB6-889 Dump PDF VCE
70-482 Dump PDF VCE	70-734 Dump PDF VCE	98-363 Dump PDF VCE	MB6-890 Dump PDF VCE
70-483 Dump PDF VCE	70-740 Dump PDF VCE	98-364 Dump PDF VCE	MB6-892 Dump PDF VCE
70-484 Dump PDF VCE	70-741 Dump PDF VCE	98-365 Dump PDF VCE	MB6-893 Dump PDF VCE

Cisco Exams List

010-151 Dump PDF VCE	350-018 Dump PDF VCE	642-737 Dump PDF VCE	650-667 Dump PDF VCE
100-105 Dump PDF VCE	352-001 Dump PDF VCE	642-742 Dump PDF VCE	650-669 Dump PDF VCE
200-001 Dump PDF VCE	400-051 Dump PDF VCE	642-883 Dump PDF VCE	650-752 Dump PDF VCE
200-105 Dump PDF VCE	400-101 Dump PDF VCE	642-885 Dump PDF VCE	650-756 Dump PDF VCE
200-120 Dump PDF VCE	400-151 Dump PDF VCE	642-887 Dump PDF VCE	650-968 Dump PDF VCE
200-125 Dump PDF VCE	400-201 Dump PDF VCE	642-889 Dump PDF VCE	700-001 Dump PDF VCE
200-150 Dump PDF VCE	400-251 Dump PDF VCE	642-980 Dump PDF VCE	700-037 Dump PDF VCE
200-155 Dump PDF VCE	400-351 Dump PDF VCE	642-996 Dump PDF VCE	700-038 Dump PDF VCE
200-310 Dump PDF VCE	500-006 Dump PDF VCE	642-997 Dump PDF VCE	700-039 Dump PDF VCE
200-355 Dump PDF VCE	500-007 Dump PDF VCE	642-998 Dump PDF VCE	700-101 Dump PDF VCE
200-401 Dump PDF VCE	500-051 Dump PDF VCE	642-999 Dump PDF VCE	700-104 Dump PDF VCE
200-601 Dump PDF VCE	500-052 Dump PDF VCE	644-066 Dump PDF VCE	700-201 Dump PDF VCE
210-060 Dump PDF VCE	500-170 Dump PDF VCE	644-068 Dump PDF VCE	700-205 Dump PDF VCE
210-065 Dump PDF VCE	500-201 Dump PDF VCE	644-906 Dump PDF VCE	700-260 Dump PDF VCE
210-250 Dump PDF VCE	500-202 Dump PDF VCE	646-048 Dump PDF VCE	700-270 Dump PDF VCE
210-255 Dump PDF VCE	500-254 Dump PDF VCE	646-365 Dump PDF VCE	700-280 Dump PDF VCE
210-260 Dump PDF VCE	500-258 Dump PDF VCE	646-580 Dump PDF VCE	700-281 Dump PDF VCE
210-451 Dump PDF VCE	500-260 Dump PDF VCE	646-671 Dump PDF VCE	700-295 Dump PDF VCE
210-455 Dump PDF VCE	500-265 Dump PDF VCE	646-985 Dump PDF VCE	700-501 Dump PDF VCE
300-070 Dump PDF VCE	500-275 Dump PDF VCE	648-232 Dump PDF VCE	700-505 Dump PDF VCE
300-075 Dump PDF VCE	500-280 Dump PDF VCE	648-238 Dump PDF VCE	700-601 Dump PDF VCE
300-080 Dump PDF VCE	500-285 Dump PDF VCE	648-244 Dump PDF VCE	700-602 Dump PDF VCE
300-085 Dump PDF VCE	500-290 Dump PDF VCE	648-247 Dump PDF VCE	700-603 Dump PDF VCE
300-101 Dump PDF VCE	500-801 Dump PDF VCE	648-375 Dump PDF VCE	700-701 Dump PDF VCE
300-115 Dump PDF VCE	600-199 Dump PDF VCE	648-385 Dump PDF VCE	700-702 Dump PDF VCE
300-135 Dump PDF VCE	600-210 Dump PDF VCE	650-032 Dump PDF VCE	700-703 Dump PDF VCE
300-160 Dump PDF VCE	600-211 Dump PDF VCE	650-042 Dump PDF VCE	700-801 Dump PDF VCE
300-165 Dump PDF VCE	600-212 Dump PDF VCE	650-059 Dump PDF VCE	700-802 Dump PDF VCE
300-180 Dump PDF VCE	600-455 Dump PDF VCE	650-082 Dump PDF VCE	700-803 Dump PDF VCE
300-206 Dump PDF VCE	600-460 Dump PDF VCE	650-127 Dump PDF VCE	810-403 Dump PDF VCE
300-207 Dump PDF VCE	600-501 Dump PDF VCE	650-128 Dump PDF VCE	820-424 Dump PDF VCE
300-208 Dump PDF VCE	600-502 Dump PDF VCE	650-148 Dump PDF VCE	840-425 Dump PDF VCE
300-209 Dump PDF VCE	600-503 Dump PDF VCE	650-159 Dump PDF VCE	
300-210 Dump PDF VCE	600-504 Dump PDF VCE	650-281 Dump PDF VCE	
300-320 Dump PDF VCE	640-692 Dump PDF VCE	650-393 Dump PDF VCE	
300-360 Dump PDF VCE	640-875 Dump PDF VCE	650-472 Dump PDF VCE	
300-365 Dump PDF VCE	640-878 Dump PDF VCE	650-474 Dump PDF VCE	
300-370 Dump PDF VCE	640-911 Dump PDF VCE	650-575 Dump PDF VCE	
300-375 Dump PDF VCE	640-916 Dump PDF VCE	650-621 Dump PDF VCE	
300-465 Dump PDF VCE	642-035 Dump PDF VCE	650-663 Dump PDF VCE	
300-470 Dump PDF VCE	642-732 Dump PDF VCE	650-665 Dump PDF VCE	
300-475 Dump PDF VCE	642-747 Dump PDF VCE	650-754 Dump PDF VCE	

HOT EXAMS

Cisco

[100-105 Dumps VCE PDF](#)
[200-105 Dumps VCE PDF](#)
[300-101 Dumps VCE PDF](#)
[300-115 Dumps VCE PDF](#)
[300-135 Dumps VCE PDF](#)
[300-320 Dumps VCE PDF](#)
[400-101 Dumps VCE PDF](#)
[640-911 Dumps VCE PDF](#)
[640-916 Dumps VCE PDF](#)

Microsoft

[70-410 Dumps VCE PDF](#)
[70-411 Dumps VCE PDF](#)
[70-412 Dumps VCE PDF](#)
[70-413 Dumps VCE PDF](#)
[70-414 Dumps VCE PDF](#)
[70-417 Dumps VCE PDF](#)
[70-461 Dumps VCE PDF](#)
[70-462 Dumps VCE PDF](#)
[70-463 Dumps VCE PDF](#)
[70-464 Dumps VCE PDF](#)
[70-465 Dumps VCE PDF](#)
[70-480 Dumps VCE PDF](#)
[70-483 Dumps VCE PDF](#)
[70-486 Dumps VCE PDF](#)
[70-487 Dumps VCE PDF](#)

CompTIA

[220-901 Dumps VCE PDF](#)
[220-902 Dumps VCE PDF](#)
[N10-006 Dumps VCE PDF](#)
[SY0-401 Dumps VCE PDF](#)