



VMware

Exam VCPC610

VMware Certified Professional 6 – Cloud

Version: 6.0

[Total Questions: 221]

Question No : 1

Once an administrator has added a new property definition to the Properties Dictionary, in which two places can it be used? (Choose two.)

- A. In a Build Profile
- B. In a Machine Blueprint
- C. In an Entitlement
- D. In a Service Blueprint

Answer: A,B

Question No : 2

An administrator is configuring a DHCP Group within a Private Network Profile. The administrator cannot complete the configuration due to an error.

What is the most likely reason?

- A. The DHCP range overlaps the range of static IP addresses
- B. The DHCP range does not fall into the static IP addresses range
- C. The DHCP subnet range is duplicated in another DHCP Group
- D. The DHCP subnet range has not been applied to a DHCP Group

Answer: A

Question No : 3

An administrator needs to change the network a virtual machine will attach to. The virtual machine is deployed using vCloud Automation Center, but when the administrator attempts to modify the configuration, the requested network is not displayed.

Why is the network unavailable in the interface?

- A. It is unavailable in the Provisioning Group.
- B. It is unavailable in the Reservation.
- C. It is unavailable in the Blueprint.
- D. It is unavailable in the Build Profile.

Answer: B

Question No : 4

An administrator needs to create property definitions in the Property Dictionary. After clicking on Blueprints under the Infrastructure tab, the administrator notices that the Property Dictionary menu isn't visible.

What is the issue?

- A. The administrator doesn't have the Fabric Administrator role assigned.
- B. The administrator doesn't have the Tenant Administrator role assigned.
- C. The Property Dictionary is located under the Administration Tab.
- D. The Property Dictionary is located in the Instance Types menu under the Infrastructure Tab.

Answer: A

Question No : 5

When vCloud Automation Center provisions a multi-machine service with NAT, routed, or private networking, what is automatically deployed for that service?

- A. NSX Logical Distributed Firewall
- B. NSX Logical Router Control VM
- C. NSX Controller Cluster
- D. NSX Edge Gateway

Answer: D

Question No : 6

An administrator reviews the resources and performance for a Provider vDC and discovers that an ESXi host's resources are not being used. Further investigation reveals that the ESXi host's resources are not being used at all despite sufficient overall demand.

Which two conditions could cause this issue? (Choose two.)

- A. The ESXi host has been assigned to conflicting Organization vDCs.
- B. The ESXi host has been disabled from within vCD.
- C. The ESXi host has not been prepared as a vCD host.
- D. The ESXi host has been claimed by conflicting Provider vDCs.

Answer: B,C

Question No : 7

An ESXi 5.x host disconnects within 60 seconds after the administrator adds it to the vCenter Server inventory. The administrator determines that the issue could be related to a networking problem.

Which networking port should the administrator check for connectivity from the host to vCenter Server?

- A. 902
- B. 903
- C. 443
- D. 9443

Answer: A

Question No : 8

Why would you add a text element to a service blueprint?

- A. To allow users to enter custom properties.
- B. To allow users to enter free-form text as a description for the service they are deploying.
- C. To add descriptive text to the form.
- D. To add versioning capabilities to the service blueprint.

Answer: C

Question No : 9

While trying to extend blueprint workflows, you notice that the default workflows delivered with vCenter Orchestrator need further customization to meet all the requirements.

Which programming language can be used within vCenter Orchestrator to write customized workflows?

- A. Javascript
- B. Java
- C. C#
- D. VisualBasic

Answer: A

Question No : 10

A vSphere administrator notices that hosts are not powering off when the total cluster load is low on a cluster configured with Dynamic Power Management.

What condition could cause this behavior?

- A. The DRS migration threshold is set to the most conservative setting.
- B. The DRS migration threshold is set to the most aggressive setting.
- C. The DPM migration threshold is set to the most conservative setting.
- D. The DPM migration threshold is set to the most aggressive setting..

Answer: A

Question No : 11

A user needs to modify the threshold value of the Fault badge within vCenter Operations Manager. What should the administrator do to enable the user to complete this operation?

- A. Add the vCenter Operations Manager Admin privilege on the user in vCenter Server.
- B. Modify the user's rights from the Access Rights tab.
- C. Modify the group's rights from the Account tab.
- D. Add the Adjust Badge Thresholds privilege on the user in vCenter Server.

Answer: A

Question No : 12

An IaaS Administrator needs to create vCloud Director Endpoints. The Administrator creates one Endpoint to Organization A but cannot collect on Organization B.

What could be the issue?

- A. Organization B needs to be enabled on the vCloud Director Endpoint
- B. Organization B needs to be prepared on the vCloud Director Endpoint
- C. A second vCloud Director Endpoint needs to be created to see Organization B
- D. A second organization user needs to be added to the vCloud Director Endpoint

Answer: C

Question No : 13

An administrator has provisioned a vApp within an organization. The guest OS within one of the virtual machines is reporting a duplicate name on the network. There are no VMs in the organization with the same hostname.

What are two possible ways to resolve this issue? (Choose two.)

- A. Reconfigure the organization to use an Edge Gateway.
- B. Configure an additional network pool for the organization.
- C. Enable overlapping external networks within the vCloud Administration page.
- D. Provision a vApp network for VMs in the vApp to use.

Answer: A,D

Question No : 14

Which three actions should an administrator take before creating a vCloud Automation Center Business Group? (Choose three.)

- A. Identify the Active Directory distribution groups for the users.

- B. Determine which users will be assigned the Business Group Manager role.
- C. Identify the Active Directory security groups for the users.
- D. Determine which Cost Profiles will be used for the users.
- E. Identify the Distinguished Name of Containers where the Users and Groups for the Tenant are located.

Answer: B,C,E

Question No : 15

What are two benefits provided by vCloud vApps? (Choose two.)

- A. vApps consolidate the infrastructure into a simple consumable item.
- B. vApps include a list of all applications to be installed upon deployment.
- C. vApps provide increased portability between clouds.
- D. vApps contain cost and chargeback information to drive cost models.

Answer: A,C

Question No : 16

An administrator notices that an end user has exhausted the cluster's resources originally provisioned to its Pay-As-You-Go organization. The administrator needs to add additional resources on another vCenter Server and provide it to this Organization.

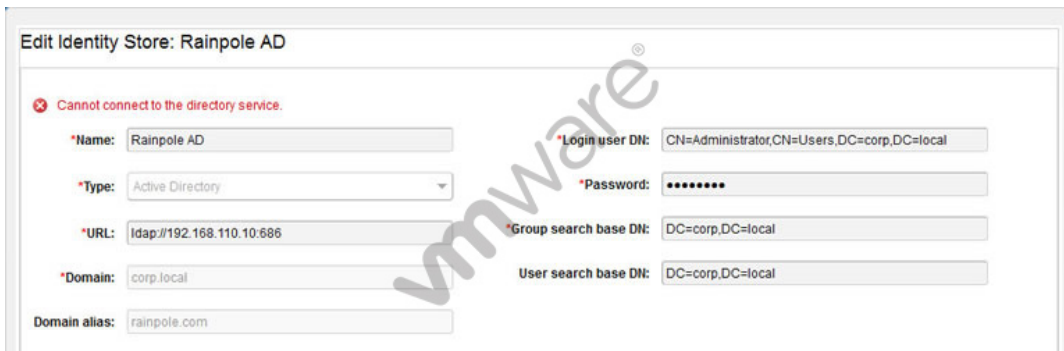
Which two steps allow for the most efficient way to complete this task? (Choose two.)

- A. Create a new cluster on the new vCenter Server.
- B. Add the new cluster to the Organization.
- C. Add the new cluster to the Provider VDC.
- D. Create a new secondary Organization.

Answer: A,C

Question No : 17

Refer to the Exhibit.



While trying to edit an identity store you are getting the error message shown in the Exhibit:



What is causing this error?

- A. The Group and User search DN's are incorrect
- B. The Login user DN is incorrect
- C. The URL is incorrect
- D. The domain is incorrect

Answer: C

Question No : 18

An administrator needs a multi-tenant, private cloud with logically isolated CPU and memory.

Which vCloud Air Service offering should the administrator select?

- A. Dedicated Cloud
- B. Virtual Private Cloud
- C. Platform-as-a-Service
- D. Data Protection Service

Answer: B

Question No : 19

Under what circumstance would a logical switch be automatically created?

- A. When deploying a blueprint that requires isolation.
- B. When deploying a blueprint that utilizes load balancing.
- C. When deploying a multi-machine blueprint.
- D. When deploying a blueprint that requires NAT.

Answer: C

Question No : 20

While trying to create a new blueprint, the template virtual machine's snapshot that the blueprint should be based on is not available for selection.

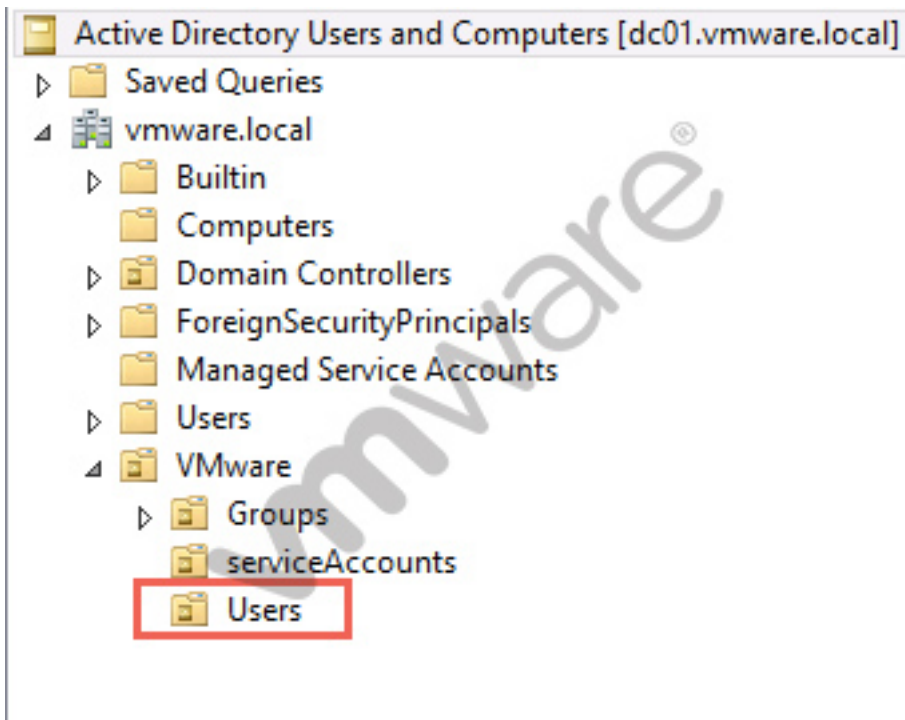
Which action will resolve the issue?

- A. The fabric administrator should perform a State Data Collection for the respective endpoint.
- B. The fabric administrator should perform a Inventory Data Collection for the respective endpoint.
- C. The IaaS administrator should perform a Inventory Data Collection for the respective endpoint.
- D. The IaaS administrator should perform a State Data Collection for the respective endpoint.

Answer: B

Question No : 21

Refer to the Exhibit.



The system administrator is required to configure a User Search Base DN for users who reside in the Users OU shown in the exhibit:



Which Base DN meets the stated requirements?

- A. OU=Users,OU=VMware,dc=vmware,dc=local
- B. OU=Users,OU=VMware,dc=vmware.local
- C. CN=Users,OU=VMware,dc=vmware,dc=local
- D. dc=vmware,dc=local,OU=VMware,OU=Users

Answer: A

Question No : 22

The installation of the IaaS components fails with the following error.

The IaaS installer failed to save the Model Manager Data and Web components

What are three possible causes for the problem? (Choose three.)

- A.** Connectivity issues to the vCloud Automation Center appliance.
- B.** The Repository Service failed to start on the IaaS server.
- C.** Trusted certificate issues between the vCloud Automation Center appliance and the Identity appliance.
- D.** The installation is being attempted on an unsupported operating system.
- E.** The .NET Framework 3.5 Feature is not installed on the target server.

Answer: A,B,C

Question No : 23

After an upgrade, in what order must vCloud Automation Center appliances be joined to the cluster?

- A.** Join virtual appliances to a cluster in the reverse order from which you shut them down before upgrading.
- B.** Join virtual appliances to a cluster in the same order from which you shut them down before upgrading.
- C.** Join virtual appliances to a cluster in any order from which you shut them down before upgrading.
- D.** Join virtual appliances to a cluster in numerical order (by name) from which you shut them down before upgrading.

Answer: A

Question No : 24

An administrator needs to install vSphere Update Manager using an external SQL Server 2008 R2 database.

The administrator has created the database successfully, but cannot establish connectivity when testing the DSN.

Which configuration setting could be causing the issue?

- A. The database was configured to use Windows authentication.
- B. The DSN was configured using a 32-bit ODBC connection.
- C. Update Manager does NOT support the use of a remote database.
- D. Port 9087 is being blocked by Windows Firewall on the Update Manager server.

Answer: A

Question No : 25

A vSphere administrator is unable to power on a virtual machine that resides in a HA cluster. The administrator determines that the virtual machine has a larger reservation than existing virtual machines.

Which cluster setting should the administrator modify to enable the virtual machine to power on?

- A. Admission control policy
- B. Virtual machine monitoring setting
- C. Virtual machine restart priority
- D. Host isolation response setting

Answer: A

Question No : 26

Which tool should an administrator use to prepare and implement VXLAN?

- A. NSX Manager
- B. NSX Service Composer
- C. vSphere Web Client

D. vCloud Director

Answer: C

Question No : 27

A business group manager requests an email be sent out when resources in their reservations run low.

Which option best addresses the request?

- A. Edit the business group's reservations and select Send alerts to group manager checkbox.
- B. Edit the business group's reservations and select Email group manager on the alert checkbox.
- C. Edit the business group's configuration and select Send global email alerts from vCloud Automation Center checkbox.
- D. Edit the business group's configuration and select Email all alerts to group manager checkbox.

Answer: A

Question No : 28

What is the minimum virtual machine compatibility setting required for a virtual machine to run on a vSphere 5.5 host?

- A. ESXi 5.1 and later
- B. ESXi 3.0 and later
- C. ESXi 4.1 and later
- D. ESXi 3.5 and later

Answer: D

Question No : 29

Which three Advanced Service Endpoints are available for vCloud Automation Center?

(Choose three.)

- A. Active Directory
- B. HTTP-REST
- C. SOAP
- D. Puppet
- E. Chef

Answer: A,B,C

Question No : 30

A vSphere administrator has configured a virtual machine alarm to trigger a warning when the condition Snapshot Size exceeds 1GB.

Which action should the administrator configure on the alarm to automatically resolve the condition?

- A. Delete Snapshot
- B. Reset VM
- C. Run a Command
- D. Consolidate Snapshot

Answer: C

Question No : 31

When deploying a multi-machine blueprint that includes two web servers that should both service client requests, what type of NSX for vSphere service is deployed?

- A. A NSX for vSphere Edge Services Gateway configured for static routing.
- B. A NSX for vSphere Edge Services Gateway configured for load balancing.
- C. A NSX for vSphere Edge Services Gateway configured for dynamic routing.
- D. A NSX for vSphere Edge Services Gateway configured for load sharing.

Answer: B

Question No : 32

An application team is implementing a new solution in a vSphere environment. The vendor states the application is memory intensive.

The application is very unstable when operating without adequate on-demand access to physical memory. The application's virtual machines have been assigned to the Mission Critical resource pool.

Which resource pool setting will help ensure the application has adequate access to memory?

- A. Memory reservation
- B. High memory share value
- C. Unlimited memory
- D. Expandable reservation

Answer: A

Question No : 33

A customer needs to select an appropriate Path Selection Policy (PSP) for their storage array. There is no requirement for a preferred path. The policy should not select a new path unless the current one fails.

Which PSP meets the requirement?

- A. Fixed
- B. Round Robin
- C. Most Recently Used
- D. Asymmetric Logical Unit Access

Answer: C

Question No : 34

How can an administrator make a commonly used development environment available for end-users to deploy?

- A. Use vCenter Server templates to deploy the VMs needed for the service.
- B. Use the Service Catalog to publish the VMs needed for the service.
- C. Use the vCloud Automation Connector to deploy the VMs needed for the service.
- D. Use Fast Provisioning to deploy the VMs needed for the service.

Answer: B

Question No : 35

An administrator needs to move an ESXi host out of a vCloud Director controlled cluster.

Which three actions must the administrator take in vCloud Director prior to putting the host in maintenance mode in vCenter Server? (Choose three.)

- A. Disable the ESXi host in the Organization vDC.
- B. Unprepare the ESXi Host.
- C. Disable the ESXi host in the Provider vDC.
- D. Re-deploy all VMs on a different ESXi host.
- E. Delete the ESXi Host.

Answer: B,C,D

Question No : 36

An administrator needs to configure vFlash Read Cache to improve performance.

What would benefit the most from enabling vFlash Read Cache?

- A. Virtual machines replicated with vSphere Replication
- B. Web Server virtual machines
- C. Database virtual machines
- D. Virtual machines migrated using Storage vMotion

Answer: B

Question No : 37

An upgrade of IaaS components fails for two servers running Website and Manager services on each server. The administrator started the upgrade on both servers at the same time.

What is a likely cause of the failure?

- A.** Each individual server upgrade must be allowed to complete before starting another server upgrade.
- B.** The Parallel Upgrade option in the upgrade wizard was not selected before starting the upgrade
- C.** The Upgrade Order option in the upgrade wizard was not specified before starting the upgrade
- D.** Wait for the first server upgrade to start processing before starting another server upgrade.

Answer: A

Question No : 38

An administrator needs to limit CPU resources for a vCloud Automation Center Business Group.

What should the administrator do?

- A.** Create a Reservation that includes a vSphere Resource Pool that limits CPU utilization.
- B.** Create a Reservation and specify CPU limits in the This Reservation field.
- C.** Create a Reservation and specify a Reservation Policy that limits CPU utilization.
- D.** Create a Reservation that enables Alerts based on CPU utilization.

Answer: A

Question No : 39

An OutOfMemory error appears when you try to run commands in the CLI in the appliance virtual machine. The appliance virtual machine stops responding in such a situation.

How do you resolve this?

- A. Run the darwin CLI from outside of the appliance virtual machine.
- B. Restart the network service on the appliance virtual machine.
- C. Restart the appliance virtual machine.
- D. Log into the appliance virtual machine as system administrator.

Answer: A

Question No : 40

Immediately after installing an ESXi host, an administrator needs to examine the following log files:

-  /var/log/hostd.log
-  /var/log/vmkernel.log
-  /var/log/vpxa.log

Which two techniques could an administrator use to examine these files? (Choose two.)

- A. Using the Direct Console User Interface
- B. Attaching a vSphere Client directly to the ESXi host
- C. Attaching the vSphere Web Client directly to the ESXi host
- D. Attaching the vSphere Client to the vCenter Server

Answer: A,B

Question No : 41

As part of a capacity planning exercise, a user needs a report of all reservations for all Business Groups within the user's department including the percentage used for machine quota, memory, and storage for powered-on virtual machines.

How should the user collect the data for this report?

- A. As a fabric administrator, select the columns needed in the Reservation work area and export the data in a convenient form.
- B. Request that each Business Group Manager provide the Reservation data for the user's department and combine the results.
- C. Request that the database administrator pull the data needed from the appropriate database view exporting in CSV format.
- D. As a fabric administrator, run the Reservation Summary Report from the Reports section

in vCloud Automation Center.

Answer: A

Question No : 42

What are two valid usable cloud resources that can be leveraged by vCloud Automation Center? (Choose two.)

- A. Google Compute Engine
- B. SCVMM
- C. KVM (RHEV)
- D. Standalone ESXi

Answer: B,C

Question No : 43

What is the most time-efficient way for an administrator to assigned roles to multiple users?

- A. Assign the roles to an identity store group.
- B. Import a CSV file.
- C. Assign roles via AD/LDAP.
- D. Create a new identity store object.

Answer: A

Question No : 44

As part of a multisite Single Sign-On (SSO) deployment, what two steps are required to ensure that a change to one Single Sign-On instance is propagated to the other instances? (Choose two.)

- A. Schedule a Replication Task on the primary instance
- B. Select the first instance during the installation of subsequent instances
- C. During the installation of each instance choose Linked-Mode
- D. Enable Synchronize to Active Directory on each instance

Answer: A,C

Question No : 45

An architect is trying to create and publish shared machine blueprints from IaaS, but the option is not available.

Why is this option not available?

- A. Only Tenant Administrators have the right to do this.
- B. They must have Enterprise licensing to do this.
- C. The Service architect does not belong to the business group.
- D. The blueprints need to be added to the business group.

Answer: A

Question No : 46

An administrator is unable to login to vCenter Server when using the vSphere Web Client. The administrator successfully accessed vCenter Server using the client earlier the same day.

What is the most appropriate first step the administrator should take to resolve this issue?

- A. Verify the web browser being used has Adobe Flash plugin version 11.5 or later
- B. Verify the vCenter Single Sign-On service is running on the vCenter Server
- C. Verify the vSphere Web Server service is running on the vCenter Server
- D. Verify the administrator has permissions configured in vCenter Server

Answer: B

Question No : 47

An administrator powers on a vCloud Automation Center Multi-Machine Service that includes Machine A and Machine B. The application on Machine A does not start correctly and displays the following error message:

Machine B not ready

What step should be taken to resolve this issue?

- A. Change the startup order of the Multi-Machine Service.
- B. Create a startup dependency in the Multi-Machine Service.
- C. Define a startup delay in the Multi-Machine Service.
- D. Adjust the startup approvals for the Multi-Machine Service.

Answer: A

Question No : 48

A vSphere administrator needs the ability to adjust the amount of guaranteed physical CPU and memory resources to a virtual machine without incurring application downtime.

Which actions must the administrator perform?

- A. Enable CPU hotplug and Memory hotplug on the virtual machine.
- B. Adjust the number of CPUs and the Memory Configuration for the virtual machine.
- C. Adjust the CPU reservation slider and click the Reserve all Guest Memory checkbox.
- D. Adjust the CPU and Memory reservation sliders on the virtual machine.

Answer: D

Question No : 49

A vCloud Automation Center administrator configures a virtual machine blueprint with a maximum storage capacity of 50 GB. The virtual machine attached to that blueprint is provisioned with 15 GB of storage.

What happens when the virtual machine is deployed using the default settings?

- A. The virtual machine is deployed with 15 GB of storage.
- B. The virtual machine is not deployed.
- C. The virtual machine disk is deployed with 50 GB of storage.
- D. The user is prompted to reconfigure the virtual machine's storage.

Answer: A

Question No : 50

When vCloud Automation Center provisions a vSphere virtual machine from a Blueprint, how is the selection of storage paths prioritized?

- A. The storage path with the highest priority number is selected for provisioning.
- B. Storage paths are ordered by priority number (lowest to highest) before considering the space available.
- C. Storage paths with sufficient space available are considered; then the highest priority number is selected.
- D. Storage paths with sufficient space available are considered; then the lowest priority number is selected.

Answer: B

Question No : 51

Which two fields are required when creating a new property definition in the Property Dictionary? (Choose two.)

- A. Display Name
- B. Description
- C. Property Attributes
- D. Control Type

Answer: A,D

Question No : 52

An administrator needs to configure an alarm that notifies administrators if an application is impacted by overcommitment of memory resources. The environment consists of 100 virtual machines running on 5 ESXi hosts that are configured in a fully automated HA/DRS cluster. The cluster is configured with a parent resource pool and Production and Development child pools.

Where should the administrator set the alarm to meet the requirement?

- A. On each virtual machine
- B. On each host
- C. On the Production resource pool
- D. On the cluster

Answer: D

Question No : 53

An administrator needs to create an alarm to monitor when a specific ESXi host in an HA/DRS cluster becomes disconnected from other vSphere components like HA agents or the vCenter Server.

Which process must the administrator use to accomplish this?

- A. Define a Host type alarm, monitor for the event Cannot connect host, and supply a conditional trigger on Host name equal to a specific label.
- B. Define a Cluster type alarm, monitor for the event Cannot connect host, and supply a conditional trigger on Host name equal to a specific label.
- C. Define a Cluster type alarm, monitor for the event Host status changed, and supply a specific label for each host.
- D. Define a Host type alarm, monitor for the condition Host status changed, and supply a specific label for each host.

Answer: A

Question No : 54

Which value should be entered for the default tenant when configuring the SSO settings on the vCloud Automation Center Appliance?

- A. vsphere.local
- B. system-domain
- C. system.local
- D. vsphere-local

Answer: A

Question No : 55

A user requests that an approval policy be changed. The administrator tries to edit the approval policy and fails to find a way to edit the policy when logged in with the System Administrator role.

What is a likely cause of this situation?

- A. Once an approval policy is placed in Active state it cannot be edited by any user.
- B. Once an approval policy is placed in Active state it can only be edited by an approval admin.
- C. Once an approval policy is placed in Active state it can only be edited by a tenant admin.
- D. Once an approval policy is placed in Active state it can only be edited by administrator@vsphere.local admin.

Answer: A

Question No : 56

Which term is used in vCloud Automation Center to describe the amount of consumed storage even if space-efficient storage technology is being employed?

- A. Reserved
- B. Allocated
- C. Used
- D. Physical

Answer: C

Question No : 57

Which three options will ensure that all machines deployed by the finance business group have the same Distributed Firewall rules? (Choose three.)

- A. Using Service Composer create a Security Policy named Finance with the firewall rules.

- B.** Using Service Composer create a Security Group named Finance based on machine name and specify the Finance Groups Machine Prefix.
- C.** Using Service Composer assign the Finance Security Policy to the Finance Security Group.
- D.** Using the Distributed Firewall create a Security Policy named Finance with the firewall rules.
- E.** Using the Distributed Firewall create a Security Group named Finance based on machine name and specify the Finance Groups Machine Prefix.

Answer: A,B,C

Question No : 58

The storage administrator has recommended testing the performance benefits of jumbo frames and enabled jumbo frames on the storage array. The VMware administrator has enabled jumbo frames on the VMkernel port used for the software iSCSI initiator.

What other two components must be modified to enable jumbo frames support for the software iSCSI initiator? (Choose two.)

- A.** The physical switch
- B.** The port group
- C.** The software initiator
- D.** The virtual switch

Answer: A,D

Question No : 59

An SSO user cannot log in to the Application Services appliance with vCloud Automation Center 6.1 Single Sign-On (SSO). The corresponding vCloud Automation Center 6.1 instance is running and healthy.

What is the most probable cause?

- A.** The Application Services appliance is unable to resolve the host name for SSO.
- B.** The Application Service appliance received the wrong server identification.
- C.** The Application Service appliance lost network connectivity.

D. The Application Service appliance was installed with the wrong credentials.

Answer: A

Question No : 60

You have been tasked to customize the provisioning workflow of a specific blueprint. What would you need to edit to achieve this?

- A. Skill
- B. Stub
- C. DEM
- D. Agent

Answer: B

Question No : 61

Which three types of Compute Resources can vCloud Automation Center use to provision machines? (Choose three.)


- A. ESX or ESXi host or cluster
- B. Virtual datacenter
- C. Amazon region
- D. Amazon AWS
- E. vCloud Director

Answer: A,B,C

Question No : 62

A vSphere administrator needs to enable Distributed Resource Scheduling (DRS) in an existing vSphere environment:

- ✍ The environment contains a High Availability (HA) cluster with eight ESXi hosts.
- ✍ Six ESXi hosts will be added to the cluster.
- ✍ DRS should be used on as many hosts as possible.
- ✍ Initial placement of virtual machines should be automatically performed.

 Migration recommendations should be provided, but not performed without approval.

Which procedure should the administrator perform to accomplish this task?

- A.** Select the datacenter and create a DRS cluster. Add the six remaining hosts to this cluster, then enable DRS. Edit the DRS settings and change the automation level to Partial.
- B.** Select the existing HA cluster. Add the six remaining hosts to the cluster. Enable DRS, then edit the settings and change the automation level to Manual.
- C.** Select the datacenter and create a DRS cluster. Add the six remaining hosts to this cluster, then enable DRS. Edit the DRS settings and change the automation level to Manual.
- D.** Select the existing HA cluster. Add the six remaining hosts to the cluster. Enable DRS, then edit the settings and change the automation level to Partial.

Answer: D

Question No : 63

An administrator needs to prevent two virtual machines from running on the same host at any time.

Which DRS rule should the administrator apply?

- A.** vm-to-vm affinity
- B.** vm-to-host affinity
- C.** vm-to-vm anti-affinity
- D.** vm-to-host anti-affinity

Answer: C

Question No : 64

Refer to the Exhibit.

Dumps with PDF and VCE (+Free VCE Software)

Configure Services: intech-edgegw

DHCP NAT Firewall Static Routing VPN Load Balancer

Network Address Translation (NAT) modifies the source/destination IP addresses of packets arriving to and leaving from this Edge Gateway. Source NAT (SNAT) translates the source address of a packet before leaving this gateway, whereas Destination NAT(DNAT) translates the destination IP address/port of a packet received by this gateway.

Applied On	Type	Original IP	Original Port	Translated IP	Translated Port	Protocol	Enabled
ExtDirectNet	SNAT	192.168.1.0/24	any	10.131.12.169	any	ANY	✓
ExtDirectNet	DNAT	10.131.12.169	50000	10.10.10.50	22	TCP	✓
ExtDirectNet	SNAT	172.16.10.0/24	any	10.131.12.169	any	ANY	✓
ExtDirectNet	DNAT	10.131.12.169	40010	172.16.10.25	3389	TCP	✓

Add SNAT... Add DNAT... Edit... Delete

An administrator finds a network problem. Virtual machines on the 10.10.10.0/24 network are unable to communicate on the external network.

What should the administrator do to resolve the problem?

- A.** Change the Translated Port from 22 to any.
- B.** Create a SNAT for the network 10.10.10.0/24 to pass traffic.
- C.** Create a DNAT for the network 10.10.10.0/24 to pass traffic.
- D.** Change the Protocol from TCP to any.

Answer: B

Question No : 65

An administrator has created a Virtual Flash Read Cache and needs to add a total 2TB of capacity to the cache. The administrator has a total of six SSD disks to add, but is unable to add one of the disks.

What is a likely cause of the problem?

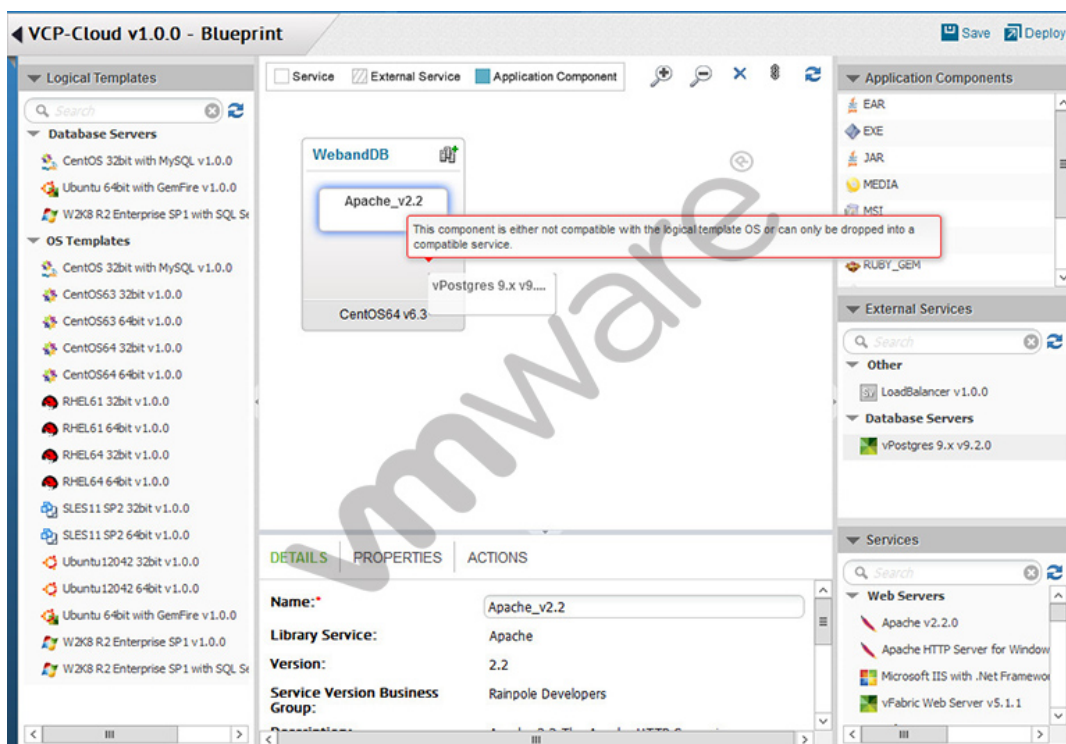
- A.** The SSD device size is less than 256GB.

- B. The SSD device size is greater than 4TB.
- C. The SSD device is a local disk.
- D. The SSD device contains existing data.

Answer: B

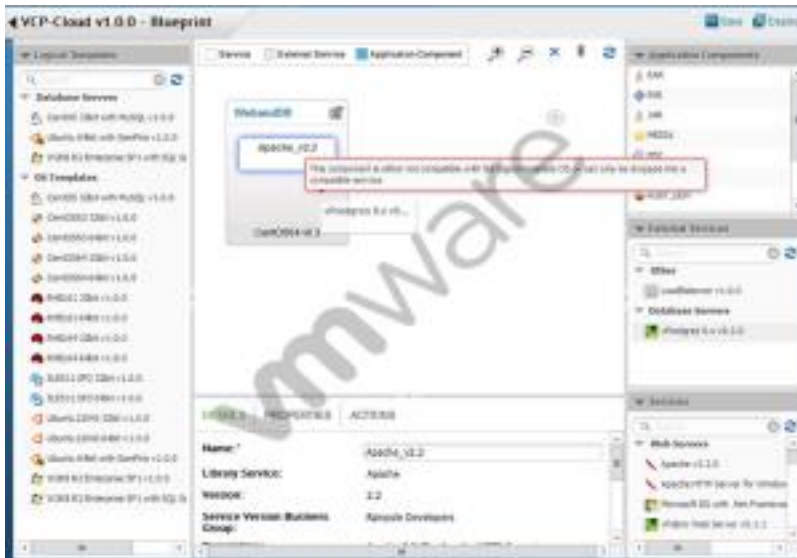
Question No : 66

Refer to the Exhibit.



While building an application blueprint, the administrator cannot add a vPostgres database service to the new operating system, as shown in the exhibit:

Dumps with PDF and VCE (+Free VCE Software)



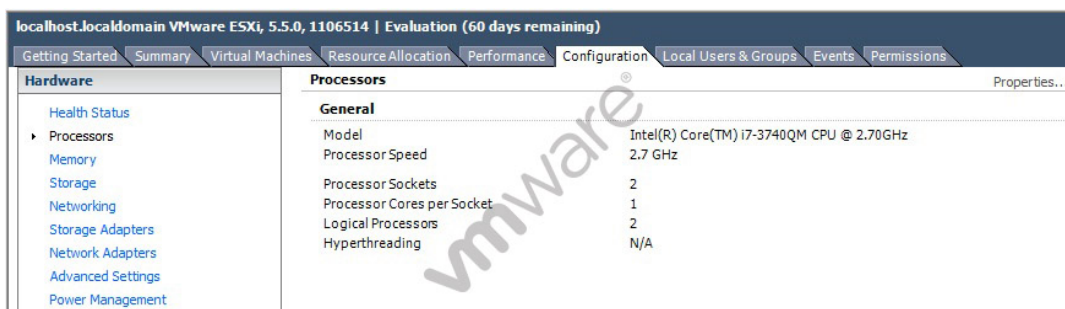
What is needed to resolve this?

- A. Drag and drop vPostgres from the Services menu onto the new operating system.
- B. Delete the current operating system and deploy a new Database Server that includes vPostgres.
- C. Drag and drop a vPostgres Application Component to join the existing operating system and vPostgres objects.
- D. Add an External Service Instance Profile to the Deployment Environment.

Answer: A

Question No : 67

Refer to the Exhibit.



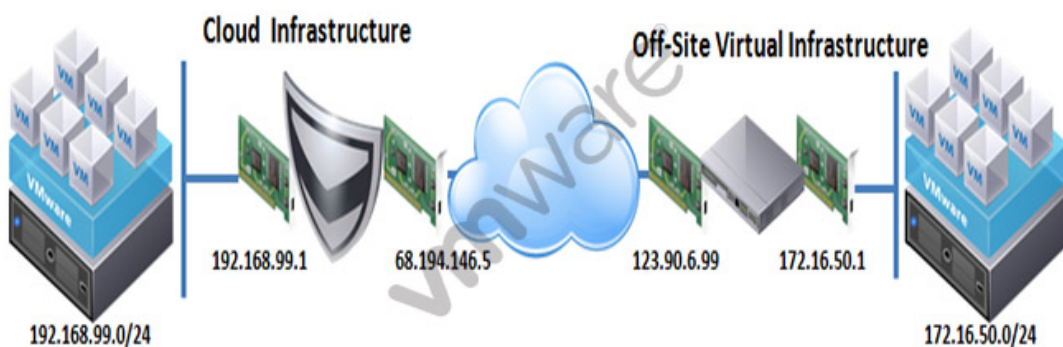
Which two reasons could be the cause of the vSphere Client reporting N/A for hyperthreading? (Choose two.)

- A. The physical CPUs in the host do not support hyperthreading.
- B. Hyperthreading is disabled in the host's BIOS.
- C. The physical CPUs in the host are not multi-core.
- D. The number of CPUs meets or exceeds the maximum without hyperthreading.

Answer: A,B

Question No : 68

Refer to the Exhibit.



An administrator needs to configure Site-to-Site VPN.

Based on the exhibit, which address should the administrator use for the Peer IP?

- A. 123.90.6.99
- B. 68.184.146.5
- C. 172.16.50.1
- D. 192.168.99.1

Answer: A

Question No : 69

When a space-efficient storage technology such as thin provisioning is used how is storage usage tracked against a Machine?

- A. The storage allocated to a provisioned machine is fully committed to that machine, even when it is powered off.

- B.** The storage allocated and the storage used are tracked separately and only the storage used is fully committed to the provisioned machine.
- C.** The storage allocated to a provisioned machine is fully committed to that machine, only when it is powered on.
- D.** The storage allocated and the storage used are tracked separately and the storage allocated is fully committed to the provisioned machine.

Answer: B

Question No : 70

An administrator creates a vCAC virtual machine blueprint with the following resource parameters:

A user tries to launch a machine based on this blueprint with the following resource parameters:

What is the immediate outcome of this attempt?

- A.** The virtual machine fails to launch.
- B.** The virtual machine is launched as configured.
- C.** The virtual machine deployment awaits administrative approval.
- D.** The virtual machine launches with automatically adjusted parameters.

Answer: B

Explanation:

#CPUs	2
Memory (MB)	1028
Storage (GB)	5
Lease (days)	30

Microsoft Exams List

70-246 Dump PDF VCE	70-485 Dump PDF VCE	70-742 Dump PDF VCE	98-366 Dump PDF VCE
70-247 Dump PDF VCE	70-486 Dump PDF VCE	70-743 Dump PDF VCE	98-367 Dump PDF VCE
70-331 Dump PDF VCE	70-487 Dump PDF VCE	70-744 Dump PDF VCE	98-368 Dump PDF VCE
70-332 Dump PDF VCE	70-488 Dump PDF VCE	70-761 Dump PDF VCE	98-369 Dump PDF VCE
70-333 Dump PDF VCE	70-489 Dump PDF VCE	70-762 Dump PDF VCE	98-372 Dump PDF VCE
70-334 Dump PDF VCE	70-490 Dump PDF VCE	70-765 Dump PDF VCE	98-373 Dump PDF VCE
70-339 Dump PDF VCE	70-491 Dump PDF VCE	70-768 Dump PDF VCE	98-374 Dump PDF VCE
70-341 Dump PDF VCE	70-492 Dump PDF VCE	70-980 Dump PDF VCE	98-375 Dump PDF VCE
70-342 Dump PDF VCE	70-494 Dump PDF VCE	70-981 Dump PDF VCE	98-379 Dump PDF VCE
70-345 Dump PDF VCE	70-496 Dump PDF VCE	70-982 Dump PDF VCE	MB2-700 Dump PDF VCE
70-346 Dump PDF VCE	70-497 Dump PDF VCE	74-343 Dump PDF VCE	MB2-701 Dump PDF VCE
70-347 Dump PDF VCE	70-498 Dump PDF VCE	74-344 Dump PDF VCE	MB2-702 Dump PDF VCE
70-348 Dump PDF VCE	70-499 Dump PDF VCE	74-409 Dump PDF VCE	MB2-703 Dump PDF VCE
70-354 Dump PDF VCE	70-517 Dump PDF VCE	74-678 Dump PDF VCE	MB2-704 Dump PDF VCE
70-383 Dump PDF VCE	70-532 Dump PDF VCE	74-697 Dump PDF VCE	MB2-707 Dump PDF VCE
70-384 Dump PDF VCE	70-533 Dump PDF VCE	77-420 Dump PDF VCE	MB2-710 Dump PDF VCE
70-385 Dump PDF VCE	70-534 Dump PDF VCE	77-427 Dump PDF VCE	MB2-711 Dump PDF VCE
70-410 Dump PDF VCE	70-640 Dump PDF VCE	77-600 Dump PDF VCE	MB2-712 Dump PDF VCE
70-411 Dump PDF VCE	70-642 Dump PDF VCE	77-601 Dump PDF VCE	MB2-713 Dump PDF VCE
70-412 Dump PDF VCE	70-646 Dump PDF VCE	77-602 Dump PDF VCE	MB2-714 Dump PDF VCE
70-413 Dump PDF VCE	70-673 Dump PDF VCE	77-603 Dump PDF VCE	MB2-715 Dump PDF VCE
70-414 Dump PDF VCE	70-680 Dump PDF VCE	77-604 Dump PDF VCE	MB2-716 Dump PDF VCE
70-417 Dump PDF VCE	70-681 Dump PDF VCE	77-605 Dump PDF VCE	MB2-717 Dump PDF VCE
70-461 Dump PDF VCE	70-682 Dump PDF VCE	77-881 Dump PDF VCE	MB2-718 Dump PDF VCE
70-462 Dump PDF VCE	70-684 Dump PDF VCE	77-882 Dump PDF VCE	MB5-705 Dump PDF VCE
70-463 Dump PDF VCE	70-685 Dump PDF VCE	77-883 Dump PDF VCE	MB6-700 Dump PDF VCE
70-464 Dump PDF VCE	70-686 Dump PDF VCE	77-884 Dump PDF VCE	MB6-701 Dump PDF VCE
70-465 Dump PDF VCE	70-687 Dump PDF VCE	77-885 Dump PDF VCE	MB6-702 Dump PDF VCE
70-466 Dump PDF VCE	70-688 Dump PDF VCE	77-886 Dump PDF VCE	MB6-703 Dump PDF VCE
70-467 Dump PDF VCE	70-689 Dump PDF VCE	77-887 Dump PDF VCE	MB6-704 Dump PDF VCE
70-469 Dump PDF VCE	70-692 Dump PDF VCE	77-888 Dump PDF VCE	MB6-705 Dump PDF VCE
70-470 Dump PDF VCE	70-695 Dump PDF VCE	77-891 Dump PDF VCE	MB6-884 Dump PDF VCE
70-473 Dump PDF VCE	70-696 Dump PDF VCE	98-349 Dump PDF VCE	MB6-885 Dump PDF VCE
70-480 Dump PDF VCE	70-697 Dump PDF VCE	98-361 Dump PDF VCE	MB6-886 Dump PDF VCE
70-481 Dump PDF VCE	70-698 Dump PDF VCE	98-362 Dump PDF VCE	MB6-889 Dump PDF VCE
70-482 Dump PDF VCE	70-734 Dump PDF VCE	98-363 Dump PDF VCE	MB6-890 Dump PDF VCE
70-483 Dump PDF VCE	70-740 Dump PDF VCE	98-364 Dump PDF VCE	MB6-892 Dump PDF VCE
70-484 Dump PDF VCE	70-741 Dump PDF VCE	98-365 Dump PDF VCE	MB6-893 Dump PDF VCE

Cisco Exams List

010-151 Dump PDF VCE	350-018 Dump PDF VCE	642-737 Dump PDF VCE	650-667 Dump PDF VCE
100-105 Dump PDF VCE	352-001 Dump PDF VCE	642-742 Dump PDF VCE	650-669 Dump PDF VCE
200-001 Dump PDF VCE	400-051 Dump PDF VCE	642-883 Dump PDF VCE	650-752 Dump PDF VCE
200-105 Dump PDF VCE	400-101 Dump PDF VCE	642-885 Dump PDF VCE	650-756 Dump PDF VCE
200-120 Dump PDF VCE	400-151 Dump PDF VCE	642-887 Dump PDF VCE	650-968 Dump PDF VCE
200-125 Dump PDF VCE	400-201 Dump PDF VCE	642-889 Dump PDF VCE	700-001 Dump PDF VCE
200-150 Dump PDF VCE	400-251 Dump PDF VCE	642-980 Dump PDF VCE	700-037 Dump PDF VCE
200-155 Dump PDF VCE	400-351 Dump PDF VCE	642-996 Dump PDF VCE	700-038 Dump PDF VCE
200-310 Dump PDF VCE	500-006 Dump PDF VCE	642-997 Dump PDF VCE	700-039 Dump PDF VCE
200-355 Dump PDF VCE	500-007 Dump PDF VCE	642-998 Dump PDF VCE	700-101 Dump PDF VCE
200-401 Dump PDF VCE	500-051 Dump PDF VCE	642-999 Dump PDF VCE	700-104 Dump PDF VCE
200-601 Dump PDF VCE	500-052 Dump PDF VCE	644-066 Dump PDF VCE	700-201 Dump PDF VCE
210-060 Dump PDF VCE	500-170 Dump PDF VCE	644-068 Dump PDF VCE	700-205 Dump PDF VCE
210-065 Dump PDF VCE	500-201 Dump PDF VCE	644-906 Dump PDF VCE	700-260 Dump PDF VCE
210-250 Dump PDF VCE	500-202 Dump PDF VCE	646-048 Dump PDF VCE	700-270 Dump PDF VCE
210-255 Dump PDF VCE	500-254 Dump PDF VCE	646-365 Dump PDF VCE	700-280 Dump PDF VCE
210-260 Dump PDF VCE	500-258 Dump PDF VCE	646-580 Dump PDF VCE	700-281 Dump PDF VCE
210-451 Dump PDF VCE	500-260 Dump PDF VCE	646-671 Dump PDF VCE	700-295 Dump PDF VCE
210-455 Dump PDF VCE	500-265 Dump PDF VCE	646-985 Dump PDF VCE	700-501 Dump PDF VCE
300-070 Dump PDF VCE	500-275 Dump PDF VCE	648-232 Dump PDF VCE	700-505 Dump PDF VCE
300-075 Dump PDF VCE	500-280 Dump PDF VCE	648-238 Dump PDF VCE	700-601 Dump PDF VCE
300-080 Dump PDF VCE	500-285 Dump PDF VCE	648-244 Dump PDF VCE	700-602 Dump PDF VCE
300-085 Dump PDF VCE	500-290 Dump PDF VCE	648-247 Dump PDF VCE	700-603 Dump PDF VCE
300-101 Dump PDF VCE	500-801 Dump PDF VCE	648-375 Dump PDF VCE	700-701 Dump PDF VCE
300-115 Dump PDF VCE	600-199 Dump PDF VCE	648-385 Dump PDF VCE	700-702 Dump PDF VCE
300-135 Dump PDF VCE	600-210 Dump PDF VCE	650-032 Dump PDF VCE	700-703 Dump PDF VCE
300-160 Dump PDF VCE	600-211 Dump PDF VCE	650-042 Dump PDF VCE	700-801 Dump PDF VCE
300-165 Dump PDF VCE	600-212 Dump PDF VCE	650-059 Dump PDF VCE	700-802 Dump PDF VCE
300-180 Dump PDF VCE	600-455 Dump PDF VCE	650-082 Dump PDF VCE	700-803 Dump PDF VCE
300-206 Dump PDF VCE	600-460 Dump PDF VCE	650-127 Dump PDF VCE	810-403 Dump PDF VCE
300-207 Dump PDF VCE	600-501 Dump PDF VCE	650-128 Dump PDF VCE	820-424 Dump PDF VCE
300-208 Dump PDF VCE	600-502 Dump PDF VCE	650-148 Dump PDF VCE	840-425 Dump PDF VCE
300-209 Dump PDF VCE	600-503 Dump PDF VCE	650-159 Dump PDF VCE	
300-210 Dump PDF VCE	600-504 Dump PDF VCE	650-281 Dump PDF VCE	
300-320 Dump PDF VCE	640-692 Dump PDF VCE	650-393 Dump PDF VCE	
300-360 Dump PDF VCE	640-875 Dump PDF VCE	650-472 Dump PDF VCE	
300-365 Dump PDF VCE	640-878 Dump PDF VCE	650-474 Dump PDF VCE	
300-370 Dump PDF VCE	640-911 Dump PDF VCE	650-575 Dump PDF VCE	
300-375 Dump PDF VCE	640-916 Dump PDF VCE	650-621 Dump PDF VCE	
300-465 Dump PDF VCE	642-035 Dump PDF VCE	650-663 Dump PDF VCE	
300-470 Dump PDF VCE	642-732 Dump PDF VCE	650-665 Dump PDF VCE	
300-475 Dump PDF VCE	642-747 Dump PDF VCE	650-754 Dump PDF VCE	

HOT EXAMS

Cisco

[100-105 Dumps VCE PDF](#)
[200-105 Dumps VCE PDF](#)
[300-101 Dumps VCE PDF](#)
[300-115 Dumps VCE PDF](#)
[300-135 Dumps VCE PDF](#)
[300-320 Dumps VCE PDF](#)
[400-101 Dumps VCE PDF](#)
[640-911 Dumps VCE PDF](#)
[640-916 Dumps VCE PDF](#)

Microsoft

[70-410 Dumps VCE PDF](#)
[70-411 Dumps VCE PDF](#)
[70-412 Dumps VCE PDF](#)
[70-413 Dumps VCE PDF](#)
[70-414 Dumps VCE PDF](#)
[70-417 Dumps VCE PDF](#)
[70-461 Dumps VCE PDF](#)
[70-462 Dumps VCE PDF](#)
[70-463 Dumps VCE PDF](#)
[70-464 Dumps VCE PDF](#)
[70-465 Dumps VCE PDF](#)
[70-480 Dumps VCE PDF](#)
[70-483 Dumps VCE PDF](#)
[70-486 Dumps VCE PDF](#)
[70-487 Dumps VCE PDF](#)

CompTIA

[220-901 Dumps VCE PDF](#)
[220-902 Dumps VCE PDF](#)
[N10-006 Dumps VCE PDF](#)
[SY0-401 Dumps VCE PDF](#)