



# **VMware**

## **Exam VCP-310**

**VMware Certified Professional on VI3**

**Version: 5.0**

**[ Total Questions: 523 ]**

**Topic 0, D**

D

**Question No : 1 - (Topic 0)**

Which is a valid traffic shaping adjustment?

- A. average bandwidth adjusted in Kbps
- B. average bandwidth adjusted in Mbps
- C. maximum bandwidth adjusted in Kbps
- D. maximum bandwidth adjusted in Mbps
- E. burst bandwidth adjusted in Kbps

**Answer: A**

**Question No : 2 - (Topic 0)**

Which three attributes can you specify when creating a resource pool for CPU or Memory? (Choose three.)

- A. Reservation
- B. Limited
- C. Number of shares
- D. Limit
- E. Maximum bandwidth

**Answer: A,C,D**

**Question No : 3 - (Topic 0)**

Which statement is true about VirtualCenter and the License Server?

- A. VirtualCenter cannot be installed without an operational License Server online.
- B. If deploying a License Server is not desirable, VirtualCenter can be installed using a host-based license file.
- C. The License Server must be installed during VirtualCenter installation and must always run on the same server as VirtualCenter.
- D. The License Server may be installed on a separate machine, but VirtualCenter requires a server-based license.

**Answer: D**

**Question No : 4 - (Topic 0)**

Which statement is true about resource pools?

- A. They may contain one or more child VMware HA clusters.
- B. They may contain one or more child resource pools.
- C. They may aggregate groups of resource pools.
- D. They may contain one or more child DRS clusters.

**Answer: B**

**Question No : 5 - (Topic 0)**

Which statement is true about running an ESX Server virtual machine on a CIFS share?

- A. ESX Server must be granted as a trusted member of the CIFS server.
- B. ESX Server does not support datastore on CIFS.
- C. ESX Server requires gigabit Ethernet adapter in order for CIFS to be used as datastore.
- D. ESX Server must be on the same LAN as the CIFS server.

**Answer: B**

**Question No : 6 - (Topic 0)**

A user has been given access to VirtualCenter using the Virtual Infrastructure Client to administer virtual machines.

What else can the user do?

- A. log on to the VirtualCenter server
- B. log on to any ESX Server managed by VirtualCenter
- C. log on to the VirtualCenter server if an administrator grants the Permit Web Access privilege
- D. log on to the VirtualCenter server and any ESX Server managed by VirtualCenter

**Answer: A**

**Question No : 7 - (Topic 0)**

What must be done to allow customization of Windows virtual machines that are deployed from templates?

- A. The location of the sysprep.exe must be specified in config.ini.
- B. Nothing needs to be done as the VirtualCenter installer automatically locates and installs Sysprep components.
- C. Sysprep must be downloaded from Microsoft and installed on the VirtualCenter server.
- D. A sysprep.inf file must be created in a text editor and imported using the customization wizard.

**Answer: C**

**Question No : 8 - (Topic 0)**

Which three statements are true about shared storage capabilities on NFS volumes supported by ESX Server? (Choose three.)

- A. You can use VMotion.
- B. You can create VMFS datastore on NFS mounted volumes.
- C. You can create virtual machines on NFS mounted volumes.
- D. You can boot virtual machines stored on NFS mounted volumes.
- E. You can configure ESX Server to boot from NFS mounted volumes.

**Answer: A,C,D**

**Question No : 9 - (Topic 0)**

A company decides to use a license server for a newly installed Virtual Infrastructure. The infrastructure consists of one VirtualCenter server and two ESX Server hosts, each with two dual core CPUs. DRS, VMware HA and VMotion will be used on all hosts.

How many license files need to be installed on the license server?

- A. 1
- B. 2
- C. 4
- D. 7
- E. 25

**Answer: A**

**Question No : 10 - (Topic 0)**

Which two statements are true about virtual switches in ESX Server? (Choose two.)

- A. Virtual switches can be created with or without physical NICs.
- B. Virtual switches cannot be created without physical NICs.
- C. A VMotion port group must not be created on a virtual switch used for virtual machine traffic.
- D. A service console port group can be created on a virtual switch used for virtual machine traffic.

**Answer: A,D**

**Question No : 11 - (Topic 0)**

In a resource-constrained environment, which ESX Server memory conservation technique has the LEAST negative effect on the performance of a running virtual machine?

- A. vmmemctl
- B. using the .vswp file
- C. Transparent Page Sharing
- D. lowering the Reservation variable

**Answer: C**

**Question No : 12 - (Topic 0)**

Which three tasks can a Resource Pool Administrator perform? (Choose three.)

- A. create a new virtual machine in the resource pool
- B. change the resource pool resource limits
- C. create a new template from a virtual machine
- D. modify assigned licenses
- E. add a port group to a virtual switch

**Answer: A,B,C**

**Question No : 13 - (Topic 0)**

A company decides to replace one 8-CPU host with four dual-CPU hosts. This Virtual Infrastructure uses server-based licensing.

How many new licenses will be required?

- A. 0
- B. 4
- C. 8
- D. 16

**Answer: A**

**Question No : 14 - (Topic 0)**

What is the minimum supported hardware requirement to run a VirtualCenter server?

- A. 512 MB RAM unless running a database server on the same machine
- B. 2 GHz CPU
- C. 150 MB free disk space
- D. at least one Gigabit Ethernet adapter

**Answer: B**

**Question No : 15 - (Topic 0)**

What are the three configurable security policy exceptions for a virtual switch? (Choose three.)

- A. promiscuous mode
- B. traffic shaping
- C. MAC address change
- D. Spanning Tree Protocol
- E. forged transmits

**Answer: A,C,E**

**Question No : 16 - (Topic 0)**

You have determined that a virtual machine (VM) is having performance problems because it does not have enough CPU resources available.

Which two methods could you use to guarantee this VM gets 100% of a CPU on the host when it needs it? (Choose two.)

- A. set CPU affinity on that virtual machine, pinning it to a CPU 1
- B. set the CPU reservation for this VM to 100%
- C. set CPU affinity on that VM, pinning it to CPU 1 and set CPU affinity on all other VMs so that they specifically cannot use CPU 1
- D. set the CPU limit for this VM to 100%

**Answer: B,C**

**Question No : 17 - (Topic 0)**

Which is a valid reason NOT to set affinity on a single virtual machine (VM)?

- A. Affinity settings are ignored as part of a VMotion
- B. Affinity can only be set on hyperthreaded systems.
- C. A VM with affinity might not receive 100 percent of the CPU.
- D. Setting affinity will monopolize a CPU making it unusable for other VMs on the server.

**Answer: C**

**Question No : 18 - (Topic 0)**

What is the maximum virtual disk size on a VMFS-3 volume?

- A. 512 GB
- B. 1 TB
- C. 2 TB
- D. 3.6 TB

**Answer: C**

**Question No : 19 - (Topic 0)**

What are the two possible storage multipathing policies that you can set on an ESX Server

3.0? (Choose two.)

- A. Most Recently Used (MRU)
- B. Open Shortest Path First (OSPF)
- C. Persistent Binding
- D. Fixed
- E. Dynamic Load Balancing

**Answer: A,D**

**Question No : 20 - (Topic 0)**

On an ESX Server managed by VirtualCenter, you create a new user and assign this user Administrator Privileges.

Which privileges will that user have on the ESX Server cluster in which this server resides?

- A. Administrator
- B. Virtual Machine Administrator
- C. Cluster User
- D. None

**Answer: D**

**Question No : 21 - (Topic 0)**

On the DRS cluster, which three steps are part of the process of creating a virtual machine (VM) in VirtualCenter 2.x? (Choose three.)

- A. choose whether you are creating a "Typical" or "Custom" VM
- B. select the group folder within the server farm in which you want the VM to reside
- C. select the resource pool in which you want to run the VM
- D. connect the CD-ROM drive to your OS disk image
- E. select a datastore in which to store the VM files

**Answer: A,C,E**

**Question No : 22 - (Topic 0)**



During ESX Server 3.0 installation, selecting "Create a default network for virtual machines" will cause virtual machines to \_\_\_\_\_.

- A. share a port group on VLAN 1
- B. share an internal only virtual switch
- C. share a network adapter with the service console
- D. share a bond with all available network adapters

**Answer: C**

**Question No : 23 - (Topic 0)**

Which problem is MOST likely to be due to bad physical memory?

- A. slow performance
- B. virtual machines not starting
- C. VMkernel panics
- D. errors on virtual machines' virtual SCSI buses

**Answer: C**

**Question No : 24 - (Topic 0)**

Which three are valid network load balancing policies? (Choose three.)

- A. route based on destination MAC hash
- B. route based on source and destination IP hash
- C. route based on the originating virtual port ID
- D.
- E. route based on source and destination MAC hash

**Answer: B,C,D**

**Question No : 25 - (Topic 0)**

Which three VirtualCenter roles, by default, have permission to create an alarm? (Choose three.)

- A. Virtual Machine Power User
- B. Resource Pool Administrator

- C. Virtual Machine Administrator
- D. Datacenter Administrator
- E. Alarm Administrator

**Answer: B,C,D**

**Question No : 26 - (Topic 0)**

Which statement is true about the installation of Virtual Infrastructure Web Access?

- A. It is always installed on ESX Server and VirtualCenter.
- B. It is always installed on ESX Server and is optional on VirtualCenter.
- C. It is always installed on VirtualCenter and is optional on ESX Server.
- D. It is optional on both ESX Server and VirtualCenter.

**Answer: B**

**Question No : 27 - (Topic 0)**

What is the purpose of resource shares?

- A. to set guaranteed maximum resource usage
- B. to set guaranteed minimum resource usage
- C. to prioritize resources when total resources are scarce
- D. to prevent starting virtual machines when resources are scarce

**Answer: C**

**Question No : 28 - (Topic 0)**

A VirtualCenter login that worked correctly in the past is suddenly no longer working. It fails to authenticate with the previous login ID.

Assuming there are no network problems and that all servers are up and running, where is the problem located?

- A. in the user's account properties in Active Directory
- B. in the VirtualCenter database's security tables
- C. in the VirtualCenter management server's security functionality

- D. in the Virtual Infrastructure client's security configuration settings
- E. in the VirtualCenter management agent on the host

**Answer: A**

**Question No : 29 - (Topic 0)**

An alarm in VirtualCenter can be configured to perform which three actions? (Choose three.)

- A. run a script
- B. reboot a virtual machine
- C. send an e-mail
- D. reboot an ESX Server
- E. disable the balloon driver

**Answer: A,B,C**

**Question No : 30 - (Topic 0)**

You are experiencing traffic overload on an Uplink network adapter.

Which three actions can be taken to reduce the overload? (Choose three.)

- A. configure traffic shaping to reduce contention
- B. move virtual machines to other VLAN port groups on the same vSwitch
- C. add NIC teaming to increase the available bandwidth
- D. move virtual machines to other vSwitches to reduce contention
- E. add the VMkernel TCP/IP networking stack to improve performance

**Answer: A,C,D**

**Question No : 31 - (Topic 0)**

During installation you manually create a local VMFS volume.

What is a possible purpose for this volume?

- A. storage for service console log files
- B. decentralized storage for all VMkernel swap activity
- C. VMkernel swap files for locally configured virtual machines
- D. service console swap files for overcommitment of service console RAM

**Answer: C**

**Question No : 32 - (Topic 0)**

An ESX Server cluster has 15 servers, each with 4 CPUs at 1000 MHz. The QA department runs 30 virtual machines (VMs), each with 4 virtual CPUs.

A requirement exists to ensure that no more than 50% of the CPU capacity of the cluster is in use by QA at any one time. You decide to place the QA VMs in a single resource pool.

How should you configure the CPU resource settings for the resource pool?

- A. set shares to normal (4000)
- B. deselect unlimited, set limit of 30000 MHz
- C. select expandable reservation
- D. deselect unlimited, set reservation of 4000, deselect expandable reservation

**Answer: B**

**Question No : 33 - (Topic 0)**

In a fully automated DRS cluster, what can be done to ensure that a specific virtual machine (VM) does not migrate automatically to another host?

- A. set the DRS VM options  
report\_section = "8" for the specific VM to Partially Automated
- B. use the Affinity Wizard to specify manual automation
- C. do nothing because the DRS cluster must be put in Partially Automated mode to allow this level of control
- D. set the DRS VM rule to "keep on this host"

**Answer: A**

**Question No : 34 - (Topic 0)**

What is the minimum version of Windows supported to run VirtualCenter?

- A. Windows Server 2003
- B. Windows Server 2003 SP1
- C. Windows 2000 Server, SP4 with Update Rollup 1
- D. Windows 2000 Server SP3 with .NET Framework
- E. Windows 2000 Server SP1

**Answer: C**

**Question No : 35 - (Topic 0)**

Disk shares manage contention between multiple virtual machines on \_\_\_\_\_.

- A. the same ESX Server accessing the same LUN only
- B. different ESX Servers accessing the same LUN only
- C. different ESX Servers accessing any LUN
- D. the same ESX Server and different ESX Servers accessing the same LUN

**Answer: A**

**Question No : 36 - (Topic 0)**

Which three are ESX Server pre-defined roles? (Choose three.)

- A. Administrator
- B. Virtual Machine Administrator
- C. Read Only
- D. No Access
- E. Virtual Machine User

**Answer: A,C,D**

**Question No : 37 - (Topic 0)**

Virtual disks in VMFS-3 volumes can be a \_\_\_\_\_. (Choose two.)

- A. single file
- B. set of files
- C. single file with a quorum file

D. set of files accompanied by quorum files

**Answer: A,B**

**Question No : 38 - (Topic 0)**

While attempting to start a virtual machine (VM), you get an error message stating that there is insufficient memory available.

What can you do to start the VM?

- A. increase the memory limit of your VM
- B. decrease the memory limit of your VM
- C. increase the memory reservation of your VM
- D. decrease the memory reservation of your VM

**Answer: D**

**Question No : 39 - (Topic 0)**

If the ESX Server does not have access to shared storage, which two additional partitions are required to be created on local storage? (Choose two.)

- A. /usr
- B. VMkernel swap
- C. vmkcore
- D. VMFS
- E. /var

**Answer: C,D**

**Question No : 40 - (Topic 0)**

Which two statements are true about internal-only virtual switches? (Choose two.)

- A. They are required for virtual machines to use private IP addresses.
- B. They disallow service console access to the virtual machines.
- C. They allow a group of virtual machines to communicate only with each other.
- D. They can contain multiple port groups.

**Answer: C,D**

**Question No : 41 - (Topic 0)**

On a DRS cluster, which three steps are part of the process of creating a virtual machine (VM) from a template in VirtualCenter 2.x? (Choose three.)

- A. choose the number of processors the new VM will use
- B. select the datacenter that contains the template
- C. choose a resource pool for the new VM
- D. determine if the VM will deploy to a virtual disk or a raw LUN
- E. decide whether or not to customize the guest OS

**Answer: B,C,E**

**Question No : 42 - (Topic 0)**

A standalone ESX Server with two physical CPUs has two running virtual machines (VMs) labeled VMA and VMB. Each VM has two virtual CPUs. VMA has 4000 CPU shares and VMB has 2000 CPU shares. VMA is continuously using 10% of the ESX Server's CPU resources. VMB attempts to use all CPU resources on the ESX Server.

Ignore overhead from the service console. What percentage of the ESX Server's CPU resources will VMB be granted?

- A. 33%
- B. 50%
- C. 90%
- D. 100%

**Answer: C**

**Question No : 43 - (Topic 0)**

A company wants to install Application Y in a virtualized environment. The underlying OS has to be Windows 2000 SP4. In a physical environment, the application and supporting software have very strict minimum hardware requirements.

Which requirement prohibits the use of the application inside a virtual machine?

- A. 5 NICs
- B. 8 GB RAM
- C. 4 CD-ROM drives
- D. 2 parallel ports

**Answer: A**

**Question No : 44 - (Topic 0)**

Suppose you have 65 virtual machines configured on a single ESX Server. You want to provide outbound connectivity for all of them.

What is the minimum number of virtual switches you would need to support this configuration?

- A. 1
- B. 2
- C. 3
- D. 4

**Answer: A**

**Question No : 45 - (Topic 0)**

You can perform a migration with VMotion on virtual machines with disks on \_\_\_\_\_.

- A. Fibre Channel-SAN based datastores only
- B. iSCSI and Fibre Channel SAN based datastores only
- C. NAS and Fibre Channel SAN-based datastores only
- D. iSCSI, NAS and Fibre Channel SAN-based datastores

**Answer: D**

**Question No : 46 - (Topic 0)**

What can prevent a successful migration with VMotion?



- A. network cards located in different server slots
- B. a physical CD-ROM that is connected from the virtual machine
- C. different CPU clock speeds
- D. one of the virtual disks that is a mapped SAN LUN

**Answer: B**

**Question No : 47 - (Topic 0)**

On which platform does the VCB proxy run?

- A. a Windows physical machine
- B. a Windows virtual machine
- C. an agent in an ESX Server
- D. a Linux physical machine
- E. a Linux virtual machine

**Answer: A**

**Question No : 48 - (Topic 0)**

What are two reasons why a company would choose to use VMware Server 1.x instead of using ESX Server 3.x? (Choose two.)

- A. ESX Server 3.x does not support the storage hardware the company wants to use.
- B. The company wants to utilize NIC teaming for network path failover and load balancing.
- C. The company wants to virtualize a large number of physical machines running legacy operating systems in their datacenter.
- D. VMware Server 1.x is a lower-cost solution for departmental virtualization projects.
- E. VMware Server 1.x allows users to run the same number of virtual machines per CPU core as ESX Server 3.x does at the same performance levels at a lower cost.

**Answer: A,D**

**Question No : 49 - (Topic 0)**

What is a characteristic of a mapped SAN LUN set to Virtual Compatibility mode?

- A. allows the guest OS to access the hardware directly

- B. allows the virtual machine to use VMware snapshots
- C. allows the use of SAN-aware applications within a virtual machine
- D. allows the VMkernel to natively access NTFS data on the LUN

**Answer: B**

**Question No : 50 - (Topic 0)**

ESX 3.0 Server supports access to \_\_\_\_\_ LUNs during the initial installation process.

- A. 32
- B. 64
- C. 128
- D. 255
- E. 256

**Answer: C**

**Question No : 51 - (Topic 0)**

Which two CPU characteristics must be identical for a successful migration with VMotion between ESX Servers? (Choose two.)

- A. CPU clock speed
- B. CPU cache size
- C. SSE3 support
- D. CPU stepping
- E. CPU vendor

**Answer: C,E**

**Question No : 52 - (Topic 0)**

Virtual machine (VM) A is connected to virtual switch A, and VM B is connected to virtual switch B.

Which statement is true about the network traffic between A and B?

- A. Traffic between VM A and VM B flows through the physical NIC.

- B. Traffic between VM A and VM B stays within ESX Server.
- C. VM A can communicate with VM B if they have same security policies.
- D. VM A can communicate with VM B if they have same port group policies.

**Answer: A**

**Question No : 53 - (Topic 0)**

During the installation of ESX Server, you decide to manually define the partitioning scheme.

Which two are recommended minimum partition sizes? (Choose two.)

- A. /boot = 512 MB
- B. swap = 544 MB
- C. / = 2560 MB
- D. /usr = 2048 MB
- E. /etc = 1500 MB

**Answer: B,C**

**Question No : 54 - (Topic 0)**

DRS on a cluster is set to "Fully Automated", at its most aggressive setting. One particular server in the cluster is running at 98% CPU utilization. You notice that none of the virtual machines (VMs) are being placed on other servers.

What are two possible causes of the problem? (Choose two.)

- A. The VM options  
report\_section = "8" in the DRS Settings on that cluster for all of the VMs on that server are set to Manual.
- B. No other server in the cluster has enough resources to accommodate any of the VMs on the overloaded server.
- C. An Affinity Rule for those particular VMs has been set to "Separate Virtual Machine" for the VMs on the overloaded host.
- D. The guest OS types for the VMs do not support DRS.

**Answer: A,B**

**Question No : 55 - (Topic 0)**

You are trying to decide whether to back up virtual machines (VMs) using a backup agent in each guest OS or using a backup agent in the service console.

When is it most appropriate to use the guest OS strategy rather than the service console strategy to back up VMs? (Choose two.)

- A. when space for storing backups is severely limited
- B. when all of the VMs must operate 24 hours a day, 7 days a week
- C. when the current backup software license is per-server and is very costly
- D. when quick recovery of full systems is a priority

**Answer: A,B**

**Question No : 56 - (Topic 0)**

Your desktop PC, like all desktop PCs at your office, has the Virtual Infrastructure Client application installed. Your PC cannot connect to a certain virtual machine (VM) on your ESX Server.

Which troubleshooting test would be LEAST helpful in determining the cause of this problem?

- A. try to connect to a different VM
- B. try to ping the IP address of a VM that is known to be up and working
- C. try to ping the IP address of your service console
- D. try to ping the DNS hostname of your service console

**Answer: B**

**Question No : 57 - (Topic 0)**

Which two statements are true about network traffic shaping? (Choose two.)

- A. The settings affect all vSwitch traffic.
- B. The settings affect only traffic coming into the uplink adapter from the physical network.
- C. The settings affect only traffic being sent out the uplink adapter to the physical network.
- D. The settings are defined on a per-virtual machine basis.
- E. The settings are defined on a per port group basis.

**Answer: C,E**

**Question No : 58 - (Topic 0)**

Which partition is required to store core dumps for debugging and for VMware technical support?

- A. vmkcore
- B. vmkdump
- C. vmfscore
- D. vmimages

**Answer: A**

**Question No : 59 - (Topic 0)**

In which format does an iSCSI target ID appear?

- A. iqn.<year-mo>.<reversed\_domain\_name>:<unique\_name>
- B. iscsi.<year-mo>.<forward\_domain\_name>:<unique\_name>
- C. iqn.<ip\_address>.<reversed\_domain\_name>
- D. iscsi.<organizational\_unit>.<forward\_domain\_name>:<unique\_name>

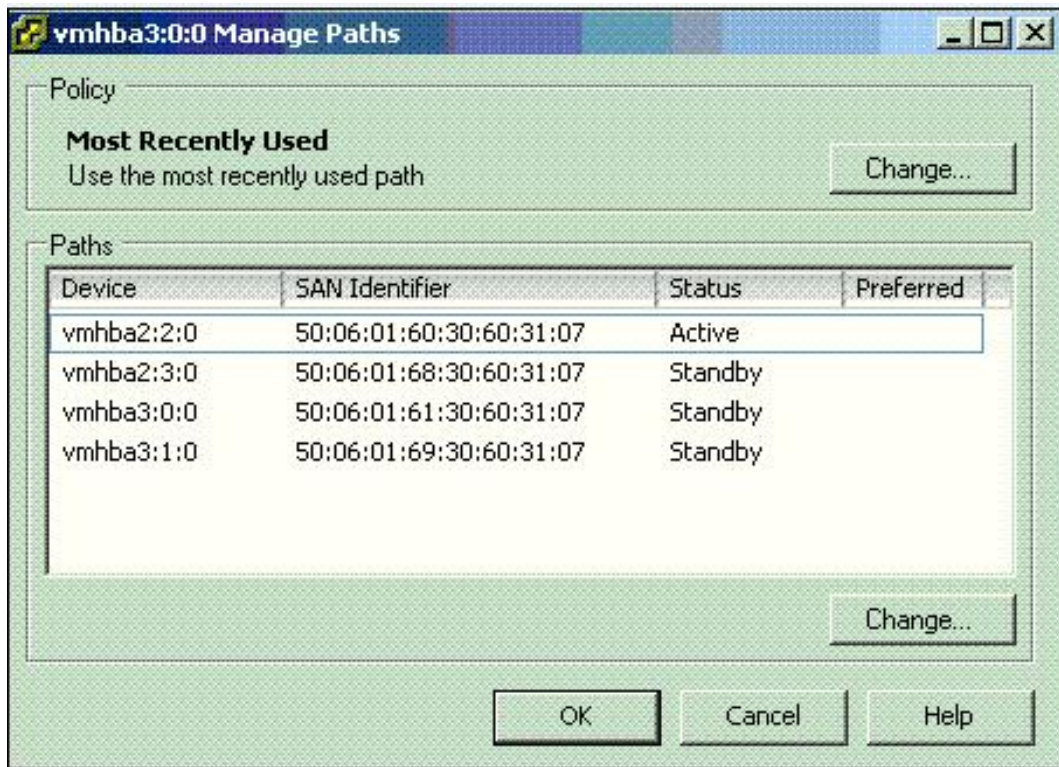
**Answer: A**

**Question No : 60 - (Topic 0)**

Click the Exhibit button.

Given the information shown in the exhibit, which three statements are true? (Choose three.)

Note: This server has not been modified from the default configuration.



- A. HBA Failover occurred.
- B. LUN has four paths.
- C. LUN is on an Active/Active array.
- D. Preferred Path is vmhba2:2:0.
- E. LUN is on an Active/Passive array.

Answer: A,B,E

### Question No : 61 - (Topic 0)

How does ESX Server 3.x differ from VMware Server 1.x?

- A. ESX Server 3.x supports multiple processors in a virtual machine and VMware Server 1.x does not.
- B. ESX Server 3.x supports Intranet and application servers in a production environment and VMware Server 1.x does not.
- C. ESX Server 3.x manages the virtualization server application remotely through a web-based interface and VMware Server 1.x does not.
- D. ESX Server 3.x supports virtual switches with VLAN capabilities and VMware Server 1.x does not.
- E. ESX Server 3.x runs on top of Linux and VMware Server 1.x does not.

Answer: D

**Question No : 62 - (Topic 0)**

One of the hosts in a cluster of 10 hosts requires maintenance. This host is currently running two virtual machines (VMs) for a total of 30% CPU utilization.

What is the best practice for repairing the hardware?

- A. place the host in Maintenance mode
- B. place the host in Offline mode
- C. place the VMs on the host in Maintenance mode
- D. repair the server while running VMs

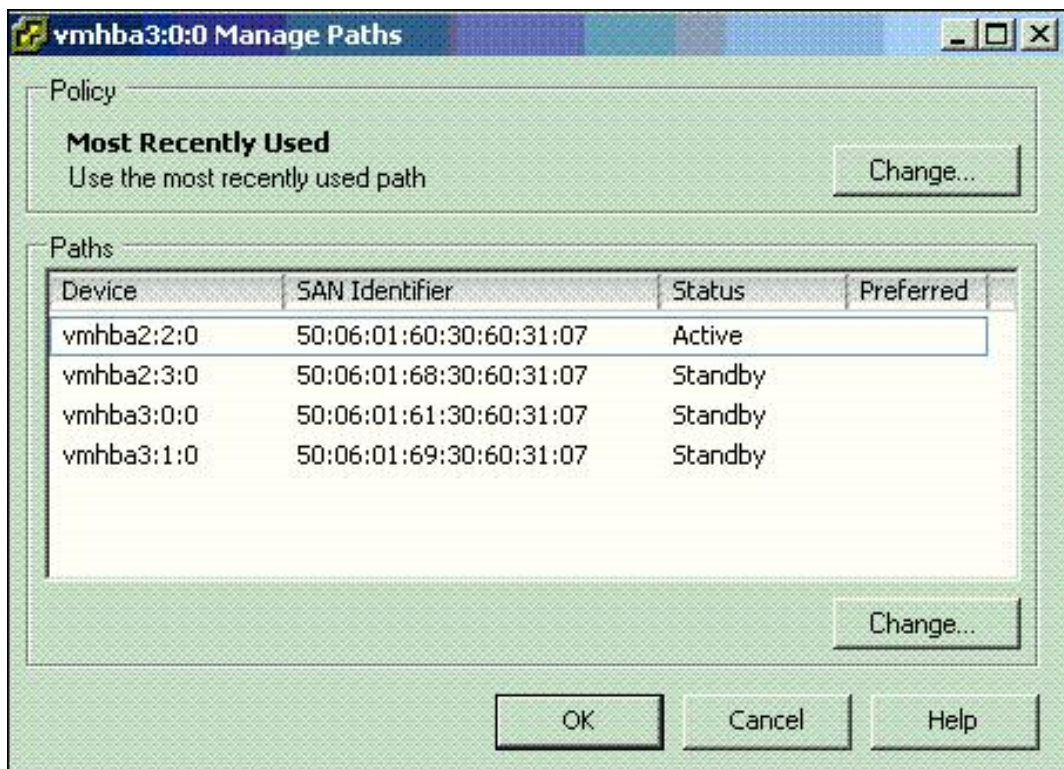
**Answer: A**

**Question No : 63 - (Topic 0)**

Click the Exhibit button.

The exhibit shows paths of a SAN LUN.

What is the LUN number?





- A. 0
- B. 1
- C. 2
- D. 3

**Answer: A**

**Question No : 64 - (Topic 0)**

What are two characteristics of VMware Consolidated Backup? (Choose two.)

- A. It requires backup agents in virtual machines.
- B. It allows the use of Fibre Channel tape from agents within the virtual machines.
- C. It performs image level backups for Windows virtual machines.
- D. It performs file level backups for Windows virtual machines.

**Answer: C,D**

**Question No : 65 - (Topic 0)**

You have a Windows virtual machine (VM) that is performing poorly. You suspect high CPU utilization is the culprit.

To definitively ascertain the cause of the performance problem, you should look for a \_\_\_\_\_.

- A. high CPU Usage % value in Windows Task Manager
- B. low CPU Ready value in VirtualCenter
- C. high CPU Usage % in a third-party monitoring tool installed in the VM
- D. high CPU Ready value in VirtualCenter

**Answer: D**

**Question No : 66 - (Topic 0)**

A company plans to implement an ESX 3.0 / VirtualCenter 2.0 infrastructure that includes the following:



- three ESX Server host machines with four physical dual-core processors
- the ability to migrate running virtual machines (VMs) between these hosts without taking them offline
- multiple processor support for certain applications

What licensing is necessary to support these requirements?

- A.** 1 VirtualCenter server license, a 12-processor VMotion license, and a 12-processor ESX Server license
- B.** 1 VirtualCenter server license, a 24-processor VMotion license, and a 24-processor ESX Server license
- C.** 3 VirtualCenter server licenses, 3 VMotion licenses, and 3 ESX Server licenses
- D.** 1 VirtualCenter server license, 1 VMotion license, and an ESX Server license for each virtual processor for each running VM

**Answer: A**

**Question No : 67 - (Topic 0)**

Which security technology does VMware iSCSI use?

- A.** CHAP
- B.** AES
- C.** IPSec
- D.** PAP
- E.** MSCHAPv2

**Answer: A**

**Question No : 68 - (Topic 0)**

You have a Windows virtual machine (VM) that when viewed through Task Manager shows CPU utilization averaging 95-100%.

What does this indicate?

- A.** The VM has an impending performance problem. You should check the running processes in Windows Task Manager to determine what applications are consuming CPU resources.

- B. The VM is utilizing most of the CPU resources allocated to it. You should check CPU Ready values to determine if this is a resource constraint.
- C. The VM has CPU affinity set to CPU 0 and is competing with the service console for CPU resources. You should run esxtop to confirm your diagnosis.
- D. The VM CPU reservation is not sufficient.

**Answer: B**

**Question No : 69 - (Topic 0)**

Where is LUN masking configured? (Choose two.)

- A. on the firewall
- B. on the Fibre Switch
- C. on the storage processor
- D. on the Ethernet switch
- E. on the host

**Answer: C,E**

**Question No : 70 - (Topic 0)**

What are three advantages of VCB over conventional agent-based methods of backing up a virtual machine's (VM's) data? (Choose three.)

- A. reduces the load on the ESX Server by moving backup tasks to a backup proxy machine
- B. enables LAN-free backup and avoids undue overloading of the datacenter network
- C. helps to eliminate the need for a backup window by using a "hot" snapshot-based backup
- D. allows selection of files and directories from the guest file system of a Linux VM
- E. makes it possible to do both file-based and full-system backup of the same VM simultaneously

**Answer: A,B,C**

**Question No : 71 - (Topic 0)**

Which statement is true about running both DRS and VMware HA (HA) on the same cluster?

- A. This is not a recommended configuration.
- B. After a host failure, HA will restart virtual machines and DRS will migrate them to balance the workloads.
- C. After a host failure, HA can start virtual machines intelligently using DRS algorithms.
- D. There is no advantage to running these two technologies on the same cluster as they are completely unrelated.

**Answer: B**

**Question No : 72 - (Topic 0)**

Which two situations will result in VMware HA restarting virtual machines? (Choose two.)

- A. A guest OS fails.
- B. An ESX Server in the cluster becomes isolated from the network.
- C. An ESX Server in the cluster is manually powered off.
- D. An ESX Server in the cluster is put into Maintenance mode.

**Answer: B,C**

**Question No : 73 - (Topic 0)**

Which two discovery options does the Virtual Infrastructure Client offer when setting up the iSCSI initiator? (Choose two.)

- A. dynamic
- B. static
- C. adaptive
- D. selective
- E. non-selective

**Answer: A,B**

**Question No : 74 - (Topic 0)**

You want to troubleshoot poor remote console performance.

Which is a possible cause of the problem?

- A. The virtual NIC assigned to the virtual machine has a speed or duplex mismatch.
- B. The physical NIC assigned to the virtual machine port group has a speed or duplex mismatch.
- C. The virtual machine has an IP address conflict.
- D. To conserve memory, the ESX Server has initiated Transparent Page Sharing.

**Answer: B**

**Question No : 75 - (Topic 0)**

What are three requirements for a VMware HA cluster? (Choose three.)

- A. name resolution between all hosts
- B. identical type and quantity of CPUs in each host
- C. access to shared storage from all hosts
- D. access to the virtual machine networks from all hosts
- E. Private Gigabit Ethernet network for all hosts

**Answer: A,C,D**

**Topic 1, E**

E

**Question No : 76 - (Topic 1)**

A virtual machine (VM) residing in a resource pool is exhibiting poor performance, and appears hung. The resource pool in which it resides is limited to 500 MHz of CPU. The cluster server in which the resource pool resides has a total of 6000 MHz, with 1000 MHz available.

Which step can be used to increase the performance of the VM?

- A. increase the CPU Limit on the VM
- B. increase the CPU Reservations on the resource pool
- C. increase the CPU Limit on the resource pool
- D. increase the CPU Reservations on the VM

**Answer: C**

**Question No : 77 - (Topic 1)**

Which of the following are requirements for a VMware HA cluster? (Choose Two.)

- A. identical type and quantity of CPUs in each host
- B. access to shared storage from all hosts
- C. a private Ethernet network for all hosts
- D. access to the virtual machine networks from all hosts

**Answer: B,D**

**Question No : 78 - (Topic 1)**

What is the maximum number of systems guided consolidation can simultaneously analyze?

- A. 500
- B. 100
- C. 1000
- D. 250

**Answer: B**

**Question No : 79 - (Topic 1)**

What are two advantages of VCB over conventional agent-based methods of backing up a virtual machine's (VM's) data? (Choose Two.)

- A. enables LAN-free backup and avoids undue overloading of the datacenter network
- B. allows selection of files and directories from the guest file system of any VM
- C. makes it possible to do both file-based and full-system backup of the same VM simultaneously
- D. helps to eliminate the need for a backup window by using an online, snapshot-based backup

**Answer: A,D**

**Question No : 80 - (Topic 1)**

On the DRS cluster, which three steps are part of the process in creating a virtual machine (VM) in VirtualCenter 2.x? (Choose Three.)

- A. select the group folder within the server farm in which you want the VM to reside
- B. choose whether you are creating a Typical or Custom VM
- C. select a datastore in which to store the VM files
- D. select the resource pool in which you want to run the VM
- E. connect the CD-ROM drive to your OS disk image

**Answer: B,C,D**

**Question No : 81 - (Topic 1)**

The incorrect application of traffic shaping settings can affect network performance of \_\_\_\_\_.

- A. traffic only between virtual machines on the same vSwitch
- B. traffic only between virtual machines on different vSwitches on the different ESX Servers
- C. traffic only between virtual machines on different vSwitches on the same ESX Server
- D. general network traffic, including non virtual machine traffic

**Answer: D**

**Question No : 82 - (Topic 1)**

Guided consolidation allows you to perform the following tasks (Choose Three):

- A. Discover physical systems in your datacenter
- B. Gain an inventory of all model types of physical systems in your datacenter
- C. Consolidate physical systems by converting them to Virtual Machines
- D. Import performance information from a 3rd party tool for analysis
- E. Analyze physical systems to determine performance characteristics

**Answer: A,C,E**

**Question No : 83 - (Topic 1)**

Which of the following Advanced Boot Options can be configured from the options tab of a Virtual Machine? (Choose Two)

- A. Select the Force BIOS Setup option
- B. Select a script to execute on boot up

- C. Specify a boot delay in milliseconds
- D. Change the boot order

**Answer: A,C**

**Question No : 84 - (Topic 1)**

You can perform a migration with VMotion on virtual machines with disks on \_\_\_\_\_.

- A. NAS and Fibre Channel SAN-based datastores only
- B. iSCSI and Fibre Channel SAN based datastores only
- C. iSCSI, NAS and Fibre Channel SAN-based datastores
- D. Fibre Channel-SAN based datastores only

**Answer: C**

**Question No : 85 - (Topic 1)**

What file systems will be mounted under /vmfs/volumes?

- A. all partitions that have a VMFS file system
- B. all partitions listed in the /etc/fstab
- C. all partitions allocated to the VMkernel
- D. all partitions not allocated to the Service console

**Answer: A**

**Question No : 86 - (Topic 1)**

A company plans to implement an ESX 3.x / VirtualCenter 2.x infrastructure that includes the following:

- 1.) Three ESX Server host machines with four physical dual-core processors
- 2.) The ability to migrate running virtual machines (VMs) between these hosts without taking them offline
- 3.) Multiple processor support for certain applications. What licensing is necessary to support these requirements?

- A. 1 VirtualCenter Server license, a 24-processor VMotion license, and a 24-processor ESX Server license
- B. 1 VirtualCenter Server license, 1 VMotion license, and an ESX Server license for each virtual processor for each running VM
- C. 1 VirtualCenter Server license, a 12-processor VMotion license, and a 12-processor ESX Server license
- D. 3 VirtualCenter Server licenses, 3 VMotion licenses, and 3 ESX Server licenses

**Answer: C**

**Question No : 87 - (Topic 1)**

For what reason would an ESX Server administrator send an end user a remote console URL?

- A. because remote console URLs are used to delegate administrative tasks performed on the ESX service console
- B. to provide a lightweight user interface to a virtual machine without a Virtual Infrastructure (VI) Client
- C. for quick access to a specific virtual machine from the Virtual Infrastructure (VI) Client
- D. to go directly to the state of a specific virtual machine snapshot that can be resumed by the end user with a Virtual Infrastructure (VI) Client

**Answer: B**

**Question No : 88 - (Topic 1)**

Which of the following system images is not a supported import option for VMware Enterprise Converter?

- A. Symantec Ghost 8 (.gho)
- B. Acronis True Image 9/10 (.tib)
- C. Symantec Ghost 9/10/12 (.sv2i)
- D. VMware Consolidated Backup (VCB) full backup images

**Answer: A**

**Question No : 89 - (Topic 1)**



Before configuring NFS on ESX Server, what must be configured?

- A. the NFS Client must be enabled from the Service Console
- B. a Service Console port
- C. a VMkernel port
- D. the NFS Client service must be enabled in the Security Profile

**Answer: C**

**Question No : 90 - (Topic 1)**

What are two characteristics of VMware Consolidated Backup? (Choose Two.)

- A. A plugin integrates the VCB UI into VirtualCenter
- B. LAN-free backups of virtual machines can be performed
- C. Image-level backups of virtual machines can be performed
- D. File-level backups of Windows and Linux virtual machines can be performed

**Answer: B,C**

**Question No : 91 - (Topic 1)**

Which three storage solutions are supported for the placement of a VMFS filesystem during the installation of the ESX Server? (Choose Three.)

- A. ATA
- B. SAN
- C. SCSI RAID
- D. SCSI
- E. ATA RAID

**Answer: B,C,D**

**Question No : 92 - (Topic 1)**

You have decided to install VirtualCenter on an existing Windows Server running an application that is accessed through standard HTTP and HTTPS connections, ports 80 and 443.

What will you need to do in order to successfully deploy VirtualCenter?

- A. You must move the application to another server but keep IIS installed and running on ports 80 and 443 for use with SDK clients.
- B. You must change the VirtualCenter Web Service port to 905 if SDK clients will be used.
- C. You must specify alternate VirtualCenter Web Service ports during installation and manually specify the alternate ports when connecting with the Virtual Infrastructure Client.
- D. No additional action is required

**Answer: C**

**Question No : 93 - (Topic 1)**

Which of the following can be used to configure an ESX 3 server with a hardware iSCSI initiator?

- A. Brocade 2110 card
- B. Intel E1000 nic
- C. Intel E100 nic
- D. QLogic QLA4050 card

**Answer: D**

**Question No : 94 - (Topic 1)**

You have a dual-processor virtual machine (VM) that has affinity set so that the virtual CPUs are pinned to CPU 3 and 4 in VirtualCenter. The VM also has a reservation setting guaranteeing it 100% of available resources for those two CPUs. Performance is poor in this VM, however performance for all other VMs on this host is acceptable.

What can you do to improve performance for this VM?

- A. change the CPU affinity settings to ensure that the virtual CPUs are running on two separate physical CPUs on the host
- B. set CPU affinity on all other VMs prohibiting them from using CPU 3 and 4
- C. change the CPU share allocation from 'Normal' to 'High'
- D. remove the reservations on the CPUs in order to allow the VMkernel to switch the virtual CPUs between CPU 3 and 4 as needed

**Answer: A**

**Question No : 95 - (Topic 1)**

Which three are ESX Server pre-defined roles? (Choose Three.)

- A. Administrator
- B. No Access
- C. Read Only
- D. Virtual Machine Administrator
- E. Virtual Machine User

**Answer: A,B,C**

**Question No : 96 - (Topic 1)**

How many paths to a LUN can be simultaneously used when Round Robin multi-pathing is enabled?

- A. Round Robin can use up to 2 paths simultaneously to send I/O.
- B. Round Robin can be set to use additional paths simultaneously for every 1000 blocks of I/O transmitted.
- C. Round Robin will use only one path to send I/O.
- D. Round Robin can use up to 4 paths simultaneously to send I/O.

**Answer: C**

**Question No : 97 - (Topic 1)**

What is a valid reason for choosing to boot from local storage rather than choosing to boot from SAN?

- A. VMotion is not supported on boot from SAN.
- B. RDM is not supported on boot from SAN.
- C. There is no way to restrict sharing of boot LUNs between ESX Servers on boot from SAN.
- D. MSCS is not supported on boot from SAN.

**Answer: D**

**Question No : 98 - (Topic 1)**

What are two benefits of Virtual Compatibility Mode for RDMs? (Choose Two.)

- A. provides virtual-to-physical clustering capability
- B. provides snapshot capability
- C. provides advanced file locking for data protection
- D. passes native SCSI commands to underlying hardware

**Answer: B,C**

**Question No : 99 - (Topic 1)**

A Windows virtual machine (VM) is experiencing poor application performance. The suspected issue is a lack of available memory. Windows Task Manager shows 30% of the memory within the VM is not currently being used.

What does this indicate and what could be checked next?

- A. The VM has memory available, however it may not actually have physical memory available. VMkernel swap activity on the ESX Server host should be checked next.
- B. Windows Task Manager is not reading actual memory usage in the VM. Windows System Monitor should be used to get a precise reading on memory usage.
- C. The application problems are definitely due to a non-memory related problem. CPU affinity settings should be checked for this VM.
- D. The application problems are definitely due to a non-memory related problem. CPU utilization should be checked next using Windows Task Manager.

**Answer: A**

**Question No : 100 - (Topic 1)**

Which of the following are benefits of using resource pools? (Choose Three.)

- A. access control and delegation
- B. decreased virtualization overhead
- C. flexible hierarchical organization
- D. improved network utilization
- E. isolation between pools, sharing within pools

**Answer: A,C,E**

**Question No : 101 - (Topic 1)**

Which of the following resources can be managed using resource pools?

- A. Memory
- B. Network
- C. I/O
- D. Disk

**Answer: A**

**Question No : 102 - (Topic 1)**

In a fully automated DRS cluster, what can be done to ensure a particular VM does not migrate automatically to another host?

- A. set the DRS VM options for the particular VM to Partially Automated mode
- B. use the Affinity Wizard to specify Manual Automation mode
- C. do nothing because the DRS cluster must be put in Partially Automated mode to allow this level of control
- D. set the DRS VM rule to keep on this host

**Answer: A**

**Question No : 103 - (Topic 1)**

Which memory allocation technique allows physical memory to be reclaimed from virtual machine A and redistributed to virtual machine B, possibly forcing virtual machine A to swap internally?

- A. VMkernel Swap
- B. Transparent Page Sharing
- C. RAM Overcommit
- D. Memory Balloon Driver

**Answer: D**

**Question No : 104 - (Topic 1)**

Virtual Center 2.X supports which two database products for production use? (Choose Two.)

- A. MySQL
- B. Oracle
- C. Microsoft SQL Server
- D. Microsoft MSDE

**Answer: B,C**

**Question No : 105 - (Topic 1)**

Which is a valid reason NOT to set CPU affinity on a single VM?

- A. Setting CPU affinity will monopolize a CPU making it unusable for other VMs on the server.
- B. CPU affinity can only be set on hyperthreaded systems.
- C. A virtual machine with CPU affinity might not receive all of its reserved CPU resources.
- D. CPU affinity settings are ignored when using VMotion.

**Answer: C**

**Question No : 106 - (Topic 1)**

It appears that a virtual machine (VM) is having performance problems because it does not have enough CPU resources available. Which of the following methods could be used to guarantee a VM gets 100% of a CPU on the host when it needs it? (Choose Two.)

- A. set the CPU limit for this VM to 100%
- B. set CPU affinity on that virtual machine, pinning it to a CPU 1
- C. set the CPU reservation for this VM to 100%
- D. set CPU affinity on that VM, pinning it to CPU 1 and set CPU affinity on all other VMs so that they specifically cannot use CPU 1

**Answer: C,D**

**Question No : 107 - (Topic 1)**

What are valid methods of installing the Virtual Infrastructure Client? (Choose Two.)

- A. run the Virtual Infrastructure Client installer from the VirtualCenter installation media
- B. using VirtualCenter Server installer, choose the custom install option and select the Virtual Infrastructure Client from the list
- C. download and run the Virtual Infrastructure Client installation program from the VirtualCenter Server with a Web Browser
- D. use the MSI installer file from the VirtualCenter installation media to publish the application with Active Directory

**Answer: A,C**

**Question No : 108 - (Topic 1)**

What is the advantage of installing backup client software in a Linux virtual machine's guest OS?

- A. This configuration enables individual files to be selected for backup or restore.
- B. This configuration enables ESX Server to do backup and restore operations.
- C. This configuration enables LAN-free backup.
- D. This configuration enables immediate booting from a restored virtual machine.

**Answer: A**

**Question No : 109 - (Topic 1)**

VirtualCenter Server is running within a virtual machine (VM) that is part of a VMware HA and DRS cluster. The VirtualCenter VM can migrate between all hosts in the cluster by using VMotion. DRS is configured for partial automation.

What happens if the ESX host that is currently running the VirtualCenter VM experiences a power outage?

- A. All DRS cluster operations will be unavailable until the ESX host is brought back online.
- B. VMware HA will restart the VirtualCenter VM on another host.
- C. This situation cannot occur because VirtualCenter cannot be installed on a VMware HA cluster.
- D. VirtualCenter will stay offline, but all virtual machines on the remaining hosts will continue without interruption.

**Answer: B**

**Question No : 110 - (Topic 1)**

Which pre-defined role can assign permissions to users?

- A. Virtual Machine User
- B. Administrator
- C. Virtual Machine Administrator
- D. Datacenter Administrator

**Answer: B**

**Question No : 111 - (Topic 1)**

What is the meaning of a red DRS cluster?

- A. Yellow clusters will become red after 15 minutes if DRS is unable to dynamically balance the load.
- B. Red clusters indicate virtual machines are using more resources than the fixed reservation allows.
- C. At least one host in the cluster is attempting to go into Maintenance mode.
- D. Red clusters are the highest priority and will receive resource allocations first.

**Answer: B**

**Question No : 112 - (Topic 1)**

A physical Network device associated with a vSwitch is overloaded: Which of the following actions can be taken to reduce the overload? (Choose Three.)

- A. move virtual machines from the affected vSwitch to other available vSwitches
- B. configure additional VLAN port groups on the same vSwitch
- C. add the VMkernel TCP/IP networking stack
- D. configure traffic shaping
- E. add an additional vmnic to the affected vSwitch

**Answer: A,D,E**

**Question No : 113 - (Topic 1)**



Which statement is true about the database used for VirtualCenter evaluations?

- A. The optional MSDE database can only be used if installed prior to running the VirtualCenter installer.
- B. MS Access may be used as an evaluation database, but it must be upgraded before VirtualCenter is used in a production environment.
- C. The VirtualCenter installer provides the option to automatically install and configure an MSDE database.
- D. Evaluation licenses do not allow VirtualCenter to connect to a remote database.

Answer: C

### Question No : 114 - (Topic 1)

Click the Exhibit button.

Assuming this is the only virtual machine, and the only resource pool, what is the maximum amount of memory that could be assigned to the virtual machine that is part of the Finance Resource Pool?

| Finance                               |                                                                                                     |
|---------------------------------------|-----------------------------------------------------------------------------------------------------|
| Summary                               | Virtual Machines   Resource Allocation   Performance   Tasks & Events   Alarms   Permissions   Maps |
| <b>General</b>                        | <b>Resources</b>                                                                                    |
| Number of Virtual Machines: 1         | CPU usage: 20 MHz                                                                                   |
| Number of Running Virtual Machines: 0 | Memory usage: 57 MB                                                                                 |
| Number of Child Resource Pools: 0     |                                                                                                     |
| <b>CPU</b>                            | <b>Memory</b>                                                                                       |
| Shares: Normal (4000)                 | Shares: Normal (163840)                                                                             |
| Reservation: 0 MHz                    | Reservation: 0 MB                                                                                   |
| Type: Expandable                      | Type: Expandable                                                                                    |
| Limit: Unlimited                      | Limit: Unlimited                                                                                    |
| Unreserved: 9496 MHz                  | Unreserved: 3009 MB                                                                                 |
| <b>Commands</b>                       |                                                                                                     |
| New Virtual Machine                   |                                                                                                     |
| New Resource Pool                     |                                                                                                     |
| Edit Settings                         |                                                                                                     |

- A. 163840 MB
- B. 3009 MB
- C. 160831 MB
- D. 57 MB

Answer: A

**Question No : 115 - (Topic 1)**

What are the three possible storage multi-pathing policies that you can set in ESX Server 3.5? (Choose Three.)

- A. Fixed
- B. Persistent Binding
- C. Open Shortest Path First (OSPF)
- D. Most Recently Used (MRU)
- E. Round Robin

**Answer: A,D,E**

**Question No : 116 - (Topic 1)**

What is the maximum number extents of a VMFS3 volume?

- A. 128
- B. 32
- C. 64
- D. 256

**Answer: B**

**Question No : 117 - (Topic 1)**

A VirtualCenter Administrator assigned you Administrator privileges on an ESX Server Cluster. You are unable to connect the Virtual Infrastructure Client to the ESX Server directly. What is a possible cause of this problem?

- A. User names and permissions are not propagated from VirtualCenter to ESX Servers.
- B. You need Administrator privileges on the server and all of its resource pools.
- C. You still have a Virtual Infrastructure Client connected to the VirtualCenter server.
- D. Administrators are not allowed to log in to ESX Servers.

**Answer: A**

**Question No : 118 - (Topic 1)**

Which of these factors indicates a high likelihood that a virtual machine's performance is being constrained by disk I/O?

- A. A large number of disk shares
- B. A long SCSI queue length
- C. A large number of kilobytes read and written
- D. A large number of virtual disks on its SCSI bus

**Answer: B**

**Question No : 119 - (Topic 1)**

A company wants to install Application Y in a virtualized environment. The underlying operating system has to be Windows NT 4.0 SP6a. In a physical environment, the application and supporting software have very strict minimum hardware requirements.

Which two requirements prohibit the use of an application inside a virtual machine? (Choose Two.)

- A. 3 NICs
- B. 8 separate disks
- C. 4 GB RAM
- D. 2 CPUs

**Answer: C,D**

**Question No : 120 - (Topic 1)**

What is true about the installation of Virtual Infrastructure (VI) Web Access?

- A. It is always installed on ESX Server and VirtualCenter.
- B. It is optional on both ESX Server and VirtualCenter.
- C. It is always installed on ESX Server and optional on VirtualCenter.
- D. It is always installed on VirtualCenter and optional on ESX Server.

**Answer: C**

**Question No : 121 - (Topic 1)**

Which of the following can be configured or modified from the Resource Allocation tab of a DRS Cluster? (Choose Two.)

- A. Memory reservation for child resource pools
- B. CPU reservation for any virtual machine in the cluster
- C. Fixed or Expandable Reservation Type for any virtual machine in the cluster
- D. CPU reservation for child resource pools

**Answer: B,C**

**Question No : 122 - (Topic 1)**

What is the default port used by iSCSI on VMware Infrastructure?

- A. 443
- B. 2049
- C. 3260
- D. 902

**Answer: C**

**Question No : 123 - (Topic 1)**

Which memory conservation technique allows the secure elimination of redundant copies of memory pages between virtual machines on the host?

- A. VMkernel Swap
- B. Memory Balloon Driver
- C. RAM Overcommit
- D. Transparent Page Sharing

**Answer: D**

**Question No : 124 - (Topic 1)**

Which is a valid traffic shaping adjustment?

- A. average bandwidth adjusted in kbps
- B. maximum bandwidth adjusted in mbps
- C. maximum bandwidth adjusted in kbps

D. average bandwidth adjusted in mbps

**Answer: A**

**Question No : 125 - (Topic 1)**

Which two conditions can cause a combined VMware DRS/HA cluster to change to a red status? (Choose Two.)

- A. The current failover capacity is smaller than the configured capacity.
- B. DRS is in the process of balancing resources among hosts in the cluster when an HA event occurs.
- C. All the primary hosts in the cluster are not responding.
- D. A DRS-only host has been added to an HA cluster.

**Answer: A,C**

**Question No : 126 - (Topic 1)**

To prevent non-ESX Servers from seeing VMFS datastores, where should LUN masking be configured?

- A. on the host
- B. on the Ethernet switch
- C. on the storage array
- D. on the Fibre Switch

**Answer: C**

**Question No : 127 - (Topic 1)**

Which three statements are true about shared storage capabilities on NFS volumes supported by ESX Server? (Choose Three.)

- A. You can configure ESX Server to boot from NFS mounted volumes.
- B. You can use VMotion.
- C. You can create virtual machines on NFS mounted volumes.
- D. You can create VMFS datastores on NFS mounted volumes.
- E. You can boot virtual machines stored on NFS mounted volumes.

**Answer: B,C,E**

**Question No : 128 - (Topic 1)**

What are two benefits that result from creating new virtual machines (VMs) using templates instead of creating blank VMs? (Choose Two.)

- A. faster deployment
- B. less disk space used in the resulting VM
- C. standardized base images
- D. easier to upgrade and manage multiple VMs

**Answer: A,C**

**Question No : 129 - (Topic 1)**

Which two are requirements when booting from SAN? (Choose Two.)

- A. Boot LUN must have an ID of 1.
- B. The boot LUN should be visible to all ESX Servers for HA failover.
- C. The BIOS for the HBA must be enabled and correctly configured.
- D. The boot LUN should only be visible to the ESX Server that is booting from it.

**Answer: C,D**

**Question No : 130 - (Topic 1)**

A company wants to install Application Y in a virtualized environment. The underlying operating system has to be Windows 2000 SP4. In a physical environment, the application and supporting software have very strict minimum hardware requirements. Which requirement prohibits the use of the application inside a virtual machine?

- A. 8 GB RAM
- B. 2 parallel ports
- C. 4 CD-ROM drives
- D. 5 NICs

**Answer: D**

**Question No : 131 - (Topic 1)**

What is the maximum virtual disk size on a VMFS 3 volume?

- A. 1 TB
- B. 512 GB
- C. 3.6 TB
- D. 2 TB

**Answer: D**

**Question No : 132 - (Topic 1)**

Plugins allow access to external applications. To enable a plugin, which of the following steps must have already been completed?

- A. The plugin must be installed using Add/Remove programs on the VirtualCenter Server
- B. The client component of the application to be used by the plugin must be installed
- C. The plugin must be selected when VirtualCenter is installed
- D. The plugin must be downloaded and installed

**Answer: D**

**Question No : 133 - (Topic 1)**

In a VI 3 environment, iSCSI dynamic discovery (Choose Two.)

- A. uses "get target" requests.
- B. is used along with static discovery on iSCSI software initiators.
- C. uses "send target" requests.
- D. is the only discovery option available for iSCSI software initiators.

**Answer: C,D**

**Question No : 134 - (Topic 1)**

Which of the following actions can be scheduled through the New Task Wizard? (Choose Two)

- A. Create a virtual machine template
- B. Delete a virtual machine
- C. Migrate a virtual machine with VMotion
- D. Adding hardware to a virtual machine

**Answer: A,C**

**Question No : 135 - (Topic 1)**

A system administrator configures an ESX Server 3.5 system to boot from SAN.

Which technology is NOT supported when booting from SAN?

- A. RDM
- B. VCB
- C. MSCS
- D. DRS

**Answer: C**

**Question No : 136 - (Topic 1)**

Which parameters are required when creating an NFS-based datastore in ESX Server?

- A. NFS server CHAP, NFS shared folder name, datastore name
- B. NFS server LUN UUID, NFS shared folder name, datastore name
- C. NFS server hostname, NFS shared folder name, datastore name
- D. NFS server World Wide Node Name, NFS shared folder name, datastore name

**Answer: C**

**Question No : 137 - (Topic 1)**

Which three technologies does the VMkernel TCP/IP networking stack support? (Choose Three.)

- A. iSCSI
- B. NFS
- C. VMotion



- D. CIFS
- E. DFS

**Answer: A,B,C**

**Question No : 138 - (Topic 1)**

When traffic shaping is enabled, network traffic of a virtual machine is \_\_\_\_\_.

- A. always limited to peak bandwidth
- B. limited to peak bandwidth if the network is congested
- C. maintained at average bandwidth
- D. limited to spare bandwidth

**Answer: A**

**Question No : 139 - (Topic 1)**

What is the minimum supported hardware requirement to run VirtualCenter Server?

- A. 150 MB free disk space
- B. 2 GHz CPU
- C. 512 MB RAM unless running a database server on the same machine
- D. connectivity to the storage volume containing templates

**Answer: B**

**Question No : 140 - (Topic 1)**

What is the minimum amount of RAM required on a physical machine running the VMware Converter Enterprise Boot CD?

- A. 256 MB
- B. 264 MB
- C. 128 MB
- D. 136 MB

**Answer: B**

**Question No : 141 - (Topic 1)**

What are the three available virtual switch connection types? (Choose Three.)

- A. VMkernel
- B. virtual machine
- C. service console
- D. internal only
- E. vswif0

**Answer: A,B,C**

**Question No : 142 - (Topic 1)**

Which of the following products are part of the VMware Infrastructure 3 software suite?

- A. VMware Update Manager
- B. VMware Virtual Desktop Manager
- C. VMware Site Recovery Manager
- D. VMware Distributed Resource Scheduler

**Answer: A,D**

**Question No : 143 - (Topic 1)**

What is necessary to connect a running virtual machine to a newly created vSwitch VLAN inside an ESX Server?

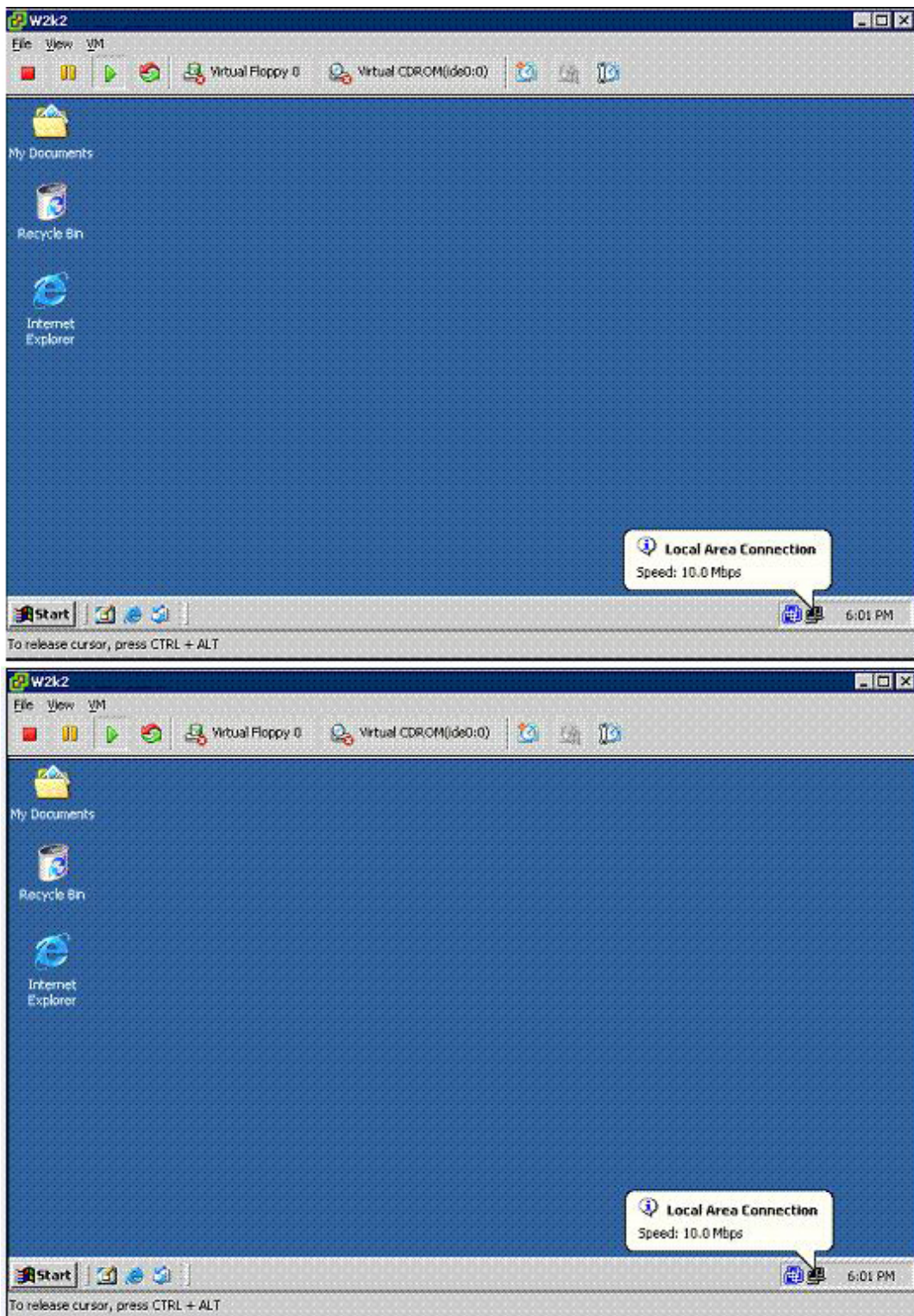
- A. power off the virtual machine, connect it to the newly created VLAN, and power it back on again using the VI Client
- B. install the proper network device inside the virtual machine
- C. install the appropriate VLAN tagging software inside the virtual machine
- D. connect to the newly created VLAN using the VI Client

**Answer: D**

**Question No : 144 - (Topic 1)**

Click the Exhibit button.

Which statement is true about the network performance of the virtual machine (VM) shown in the exhibit?



- A. The underlying physical NIC is configured for 100 Mbps/half-duplex.
- B. The VM can send at the maximum of 10 Mbps.
- C. Virtual Switch autonegotiation settings need to be adjusted to improve performance.
- D. The VM can send traffic as fast as the underlying physical NIC.

**Answer: D**

**Question No : 145 - (Topic 1)**

Which is an important benefit provided by VLANs?

- A. higher tolerance to broken physical hardware
- B. improved security
- C. improved memory access
- D. higher network availability

**Answer: B**

**Question No : 146 - (Topic 1)**

On an ESX Server, a particular user is assigned the Administrator role. However, when that user logs into the VirtualCenter Server, they have Read Only rights.

What most likely caused this?

- A. The ESX Server is not authenticating using NIS.
- B. The VirtualCenter Server is not a member of an Active Directory domain.
- C. ESX Server roles do not propagate to the VirtualCenter Server.
- D. The user is logging in with a different password.

**Answer: C**

**Question No : 147 - (Topic 1)**

The QA department wants to manage their own virtual machines (VMs). They share an ESX Server cluster with the HR department, and the Finance department.

What is the appropriate role for the QA department members?

- A. VM Administrator
- B. Datacenter Administrator
- C. Administrator on the VM object
- D. Resource Pool Administrator

**Answer: D**

**Question No : 148 - (Topic 1)**

Which of the following is a benefit of ESX Server 3i over ESX Server?

- A. Memory Over commitment
- B. Increased Security and Reliability
- C. Dynamic Resource Allocation
- D. Improved Fault Isolation

**Answer: B**

**Question No : 149 - (Topic 1)**

An ESX Administrator is troubleshooting an ESX Server and needs to export diagnostic information. The ESX Server is not connected to VirtualCenter. How can the information be gathered using the VI Client?

- A. Click, File, Export and Export Diagnostic Data, select a location and click OK.
- B. Click the Administration Button, select System Logs, then click the Export Events button. Select the ESX Server and click OK.
- C. From the Administration Drop-Down Menu, select Export Diagnostic Data, select a location and click OK.
- D. The VI Client can only be used to export diagnostic data from an ESX Server attached to VirtualCenter.

**Answer: A**

**Question No : 150 - (Topic 1)**

While performing a clean installation of ESX Server, the following partitions were created using the advanced partitioning option:

/boot = 100 MB

swap = 600 MB

/home = 2000 MB

/vmimages = 10000 MB

/var/log = 1500 MB

VMFS = use all available free space

You receive an error message and cannot continue. What is causing the error?

- A. /home needs to reside on the SAN.
- B. The /boot partition is too small.
- C. ESX 3.x no longer requires a swap partition.
- D. The / partition is missing.

**Answer: D**

## Topic 2, F

F

### Question No : 151 - (Topic 2)

What is the minimum supported hardware requirement to run VirtualCenter Server?

- A. 150 MB free disk space
- B. 2 GHz CPU
- C. 512 MB RAM unless running a database server on the same machine
- D. connectivity to the storage volume containing templates

**Answer: B**

### Question No : 152 - (Topic 2)

If an ESX Server has both local and shared storage, which three partitions are required to reside on local storage? (Choose Three.)

- A. /usr
- B. /
- C. /boot
- D. swap
- E. VMFS

**Answer: B,C,D**

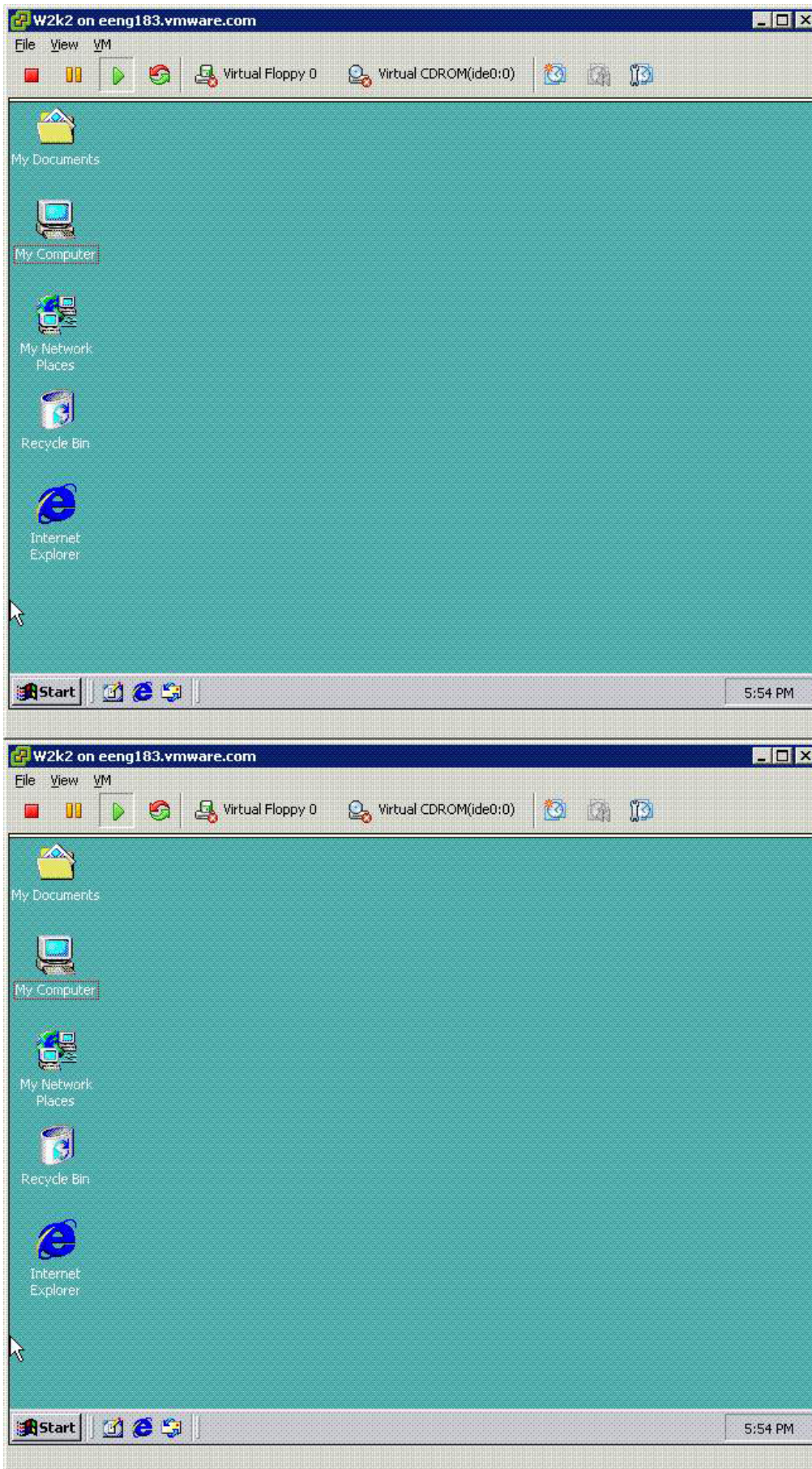
**Question No : 153 - (Topic 2)**

Click the Exhibit button.

Which of the following steps could be taken to improve the performance of this virtual machine?



## Dumps with PDF and VCE ( +Free VCE Software )



- A. Install VMware Tools
- B. increase the CPU reservation on the virtual machine
- C. Increase the memory limit of the virtual machine



D. Traffic shape this virtual machine

**Answer: A**

**Question No : 154 - (Topic 2)**

Which of the following files are part of a typical virtual machine?

- A. BIOS File (.nvram)
- B. Hardware File (.svr)
- C. Virtual Disk File (.vmdk)
- D. Configuration File (.vmx)
- E. VMotion Transfer File (.vmt)

**Answer: A,C,D**

**Question No : 155 - (Topic 2)**

Using VI Client logged into VirtualCenter Server you create a new user and assign this user administrator Privileges to an ESX Server. Which privileges will that user have on the ESX Server cluster in which this server resides?

- A. Cluster User
- B. Virtual Machine Administrator
- C. Administrator
- D. None

**Answer: D**

**Question No : 156 - (Topic 2)**

During the installation of ESX Server, you decide to define the partitioning scheme manually. What are two recommended minimum partition sizes? (Choose Two.)

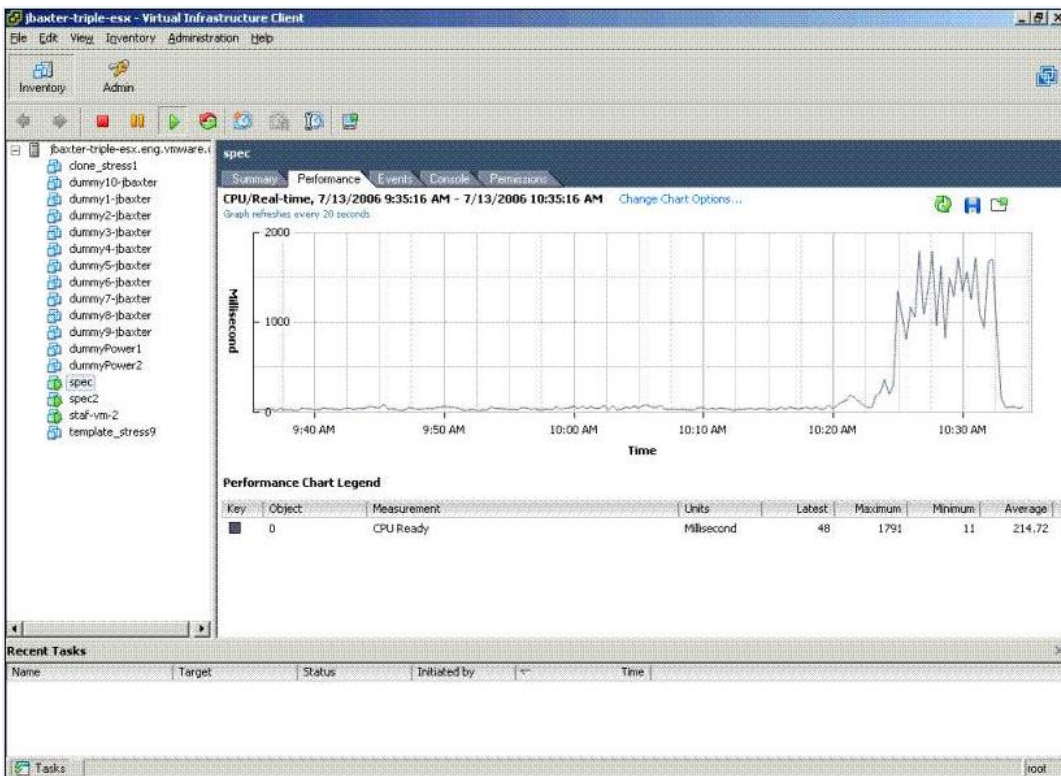
- A. / = 2560 MB
- B. /usr = 2048 MB
- C. swap = 544 MB
- D. /boot = 512 MB

Answer: A,C

**Question No : 157 - (Topic 2)**

Click the Exhibit button.

Which of the following changes would likely reduce the symptom in the performance chart shown in the exhibit? (Choose Three.)



- A. resetting the CPU affinity back to the default
- B. increasing CPU reservation
- C. increasing CPU limit
- D. increasing CPU shares
- E. setting CPU affinity

Answer: B,C,D

**Question No : 158 - (Topic 2)**

You are assigned Administrator privileges on an ESX Server cluster. You are unable to connect the Virtual Infrastructure client to the ESX Server directly.

What is a possible cause of this problem?

- A. You need Administrator privileges on the server and all of its resource pools.
- B. User names and permissions are not propagated from VirtualCenter to ESX Servers.
- C. You still have a Virtual Infrastructure Client connected to the VirtualCenter Server.
- D. Administrators are not allowed to log in to ESX Servers.

**Answer: B**

**Question No : 159 - (Topic 2)**

Which of the following statements are true about network traffic shaping? (Choose Two.)

- A. The settings affect only outbound traffic.
- B. The settings affect inbound and outbound traffic.
- C. The settings affect only inbound traffic.
- D. The settings are defined on a per port group basis.

**Answer: A,D**

**Question No : 160 - (Topic 2)**

Virtual Machines can be converted into OVF files from which of the following VMware products (Choose Three)?

- A. VMware Player 2.x
- B. VMware Server 2.x
- C. VMware ESX Server 3.5
- D. VMware Fusion 1.x
- E. VMware Workstation 6.x

**Answer: B,D,E**

**Question No : 161 - (Topic 2)**

The remote console performance for a virtual machine on an ESX Server appears to be degraded. Which of the following could be a possible cause of the problem?

- A. The physical NIC assigned to the virtual machine port group containing the affected

virtual machine has a speed or duplex mismatch.

- B. The virtual machine has an IP address conflict.
- C. The virtual NIC assigned to the virtual machine has a speed or duplex mismatch.
- D. To conserve memory, the ESX Server has initiated Transparent Page Sharing.

**Answer: A**

#### **Question No : 162 - (Topic 2)**

A user's permission set is modified so that they can no longer create alarms. What will happen to the alarms already created by this user?

- A. Alarms will be triggered for critical state changes only.
- B. Only ESX host alarms will be triggered.
- C. Alarms will be triggered if the event occurs.
- D. Alarms will never be triggered.

**Answer: C**

#### **Question No : 163 - (Topic 2)**

Which is a valid traffic shaping adjustment?

- A. peak bandwidth adjusted in mbps
- B. minimum bandwidth adjusted in mbps
- C. minimum bandwidth adjusted in kbps
- D. peak bandwidth adjusted in kbps

**Answer: D**

#### **Question No : 164 - (Topic 2)**

In order to power on and operate a Windows XP virtual machine (VM), an end user must be able to send the key combination "control-alt-delete" to log into the OS. What is true about using Virtual Infrastructure (VI) Web Access with a Windows XP virtual machine?

- A. VI Web Access is only intended for system administration of ESX Servers, but does allow end users to download and install the VI Client to manage Windows XP VMs.
- B. This VM can only be used from a Windows client because Linux clients cannot send

control-alt-delete.

**C.** VI Web Access can be used to operate this VM from any supported Windows or Linux client.

**D.** A Linux client can access the VM but first a control-alt-insert command must be sent from the VI Client.

**Answer: C**

**Question No : 165 - (Topic 2)**

VMware Enterprise Converter can export virtual machines managed by Virtual Center to all of the following destinations except:

**A.** VMware Server 1.x

**B.** VMware Workstation 4.5/5.x/6.x

**C.** VMware ESX 2.5 managed by VMWare Virtual Center 1.4

**D.** VMware ESX 3.x (Including ESX Server 3i) standalone

**Answer: C**

**Question No : 166 - (Topic 2)**

Which of the following products are part of the VMware Infrastructure 3 software suite?

**A.** VMware Update Manager

**B.** VMware Virtual Desktop Manager

**C.** VMware Site Recovery Manager

**D.** VMware Distributed Resource Scheduler

**Answer: A,D**

**Question No : 167 - (Topic 2)**

If a virtual machine (VM) experiences a monitor panic, where does the ESX Server core dump file get created?

**A.** in the local VMFS volume

**B.** in the /home partition

**C.** in the same directory as the VM's .vmx file

### Microsoft Exams List

|                                     |                                     |                                     |                                      |
|-------------------------------------|-------------------------------------|-------------------------------------|--------------------------------------|
| <a href="#">70-246 Dump PDF VCE</a> | <a href="#">70-485 Dump PDF VCE</a> | <a href="#">70-742 Dump PDF VCE</a> | <a href="#">98-366 Dump PDF VCE</a>  |
| <a href="#">70-247 Dump PDF VCE</a> | <a href="#">70-486 Dump PDF VCE</a> | <a href="#">70-743 Dump PDF VCE</a> | <a href="#">98-367 Dump PDF VCE</a>  |
| <a href="#">70-331 Dump PDF VCE</a> | <a href="#">70-487 Dump PDF VCE</a> | <a href="#">70-744 Dump PDF VCE</a> | <a href="#">98-368 Dump PDF VCE</a>  |
| <a href="#">70-332 Dump PDF VCE</a> | <a href="#">70-488 Dump PDF VCE</a> | <a href="#">70-761 Dump PDF VCE</a> | <a href="#">98-369 Dump PDF VCE</a>  |
| <a href="#">70-333 Dump PDF VCE</a> | <a href="#">70-489 Dump PDF VCE</a> | <a href="#">70-762 Dump PDF VCE</a> | <a href="#">98-372 Dump PDF VCE</a>  |
| <a href="#">70-334 Dump PDF VCE</a> | <a href="#">70-490 Dump PDF VCE</a> | <a href="#">70-765 Dump PDF VCE</a> | <a href="#">98-373 Dump PDF VCE</a>  |
| <a href="#">70-339 Dump PDF VCE</a> | <a href="#">70-491 Dump PDF VCE</a> | <a href="#">70-768 Dump PDF VCE</a> | <a href="#">98-374 Dump PDF VCE</a>  |
| <a href="#">70-341 Dump PDF VCE</a> | <a href="#">70-492 Dump PDF VCE</a> | <a href="#">70-980 Dump PDF VCE</a> | <a href="#">98-375 Dump PDF VCE</a>  |
| <a href="#">70-342 Dump PDF VCE</a> | <a href="#">70-494 Dump PDF VCE</a> | <a href="#">70-981 Dump PDF VCE</a> | <a href="#">98-379 Dump PDF VCE</a>  |
| <a href="#">70-345 Dump PDF VCE</a> | <a href="#">70-496 Dump PDF VCE</a> | <a href="#">70-982 Dump PDF VCE</a> | <a href="#">MB2-700 Dump PDF VCE</a> |
| <a href="#">70-346 Dump PDF VCE</a> | <a href="#">70-497 Dump PDF VCE</a> | <a href="#">74-343 Dump PDF VCE</a> | <a href="#">MB2-701 Dump PDF VCE</a> |
| <a href="#">70-347 Dump PDF VCE</a> | <a href="#">70-498 Dump PDF VCE</a> | <a href="#">74-344 Dump PDF VCE</a> | <a href="#">MB2-702 Dump PDF VCE</a> |
| <a href="#">70-348 Dump PDF VCE</a> | <a href="#">70-499 Dump PDF VCE</a> | <a href="#">74-409 Dump PDF VCE</a> | <a href="#">MB2-703 Dump PDF VCE</a> |
| <a href="#">70-354 Dump PDF VCE</a> | <a href="#">70-517 Dump PDF VCE</a> | <a href="#">74-678 Dump PDF VCE</a> | <a href="#">MB2-704 Dump PDF VCE</a> |
| <a href="#">70-383 Dump PDF VCE</a> | <a href="#">70-532 Dump PDF VCE</a> | <a href="#">74-697 Dump PDF VCE</a> | <a href="#">MB2-707 Dump PDF VCE</a> |
| <a href="#">70-384 Dump PDF VCE</a> | <a href="#">70-533 Dump PDF VCE</a> | <a href="#">77-420 Dump PDF VCE</a> | <a href="#">MB2-710 Dump PDF VCE</a> |
| <a href="#">70-385 Dump PDF VCE</a> | <a href="#">70-534 Dump PDF VCE</a> | <a href="#">77-427 Dump PDF VCE</a> | <a href="#">MB2-711 Dump PDF VCE</a> |
| <a href="#">70-410 Dump PDF VCE</a> | <a href="#">70-640 Dump PDF VCE</a> | <a href="#">77-600 Dump PDF VCE</a> | <a href="#">MB2-712 Dump PDF VCE</a> |
| <a href="#">70-411 Dump PDF VCE</a> | <a href="#">70-642 Dump PDF VCE</a> | <a href="#">77-601 Dump PDF VCE</a> | <a href="#">MB2-713 Dump PDF VCE</a> |
| <a href="#">70-412 Dump PDF VCE</a> | <a href="#">70-646 Dump PDF VCE</a> | <a href="#">77-602 Dump PDF VCE</a> | <a href="#">MB2-714 Dump PDF VCE</a> |
| <a href="#">70-413 Dump PDF VCE</a> | <a href="#">70-673 Dump PDF VCE</a> | <a href="#">77-603 Dump PDF VCE</a> | <a href="#">MB2-715 Dump PDF VCE</a> |
| <a href="#">70-414 Dump PDF VCE</a> | <a href="#">70-680 Dump PDF VCE</a> | <a href="#">77-604 Dump PDF VCE</a> | <a href="#">MB2-716 Dump PDF VCE</a> |
| <a href="#">70-417 Dump PDF VCE</a> | <a href="#">70-681 Dump PDF VCE</a> | <a href="#">77-605 Dump PDF VCE</a> | <a href="#">MB2-717 Dump PDF VCE</a> |
| <a href="#">70-461 Dump PDF VCE</a> | <a href="#">70-682 Dump PDF VCE</a> | <a href="#">77-881 Dump PDF VCE</a> | <a href="#">MB2-718 Dump PDF VCE</a> |
| <a href="#">70-462 Dump PDF VCE</a> | <a href="#">70-684 Dump PDF VCE</a> | <a href="#">77-882 Dump PDF VCE</a> | <a href="#">MB5-705 Dump PDF VCE</a> |
| <a href="#">70-463 Dump PDF VCE</a> | <a href="#">70-685 Dump PDF VCE</a> | <a href="#">77-883 Dump PDF VCE</a> | <a href="#">MB6-700 Dump PDF VCE</a> |
| <a href="#">70-464 Dump PDF VCE</a> | <a href="#">70-686 Dump PDF VCE</a> | <a href="#">77-884 Dump PDF VCE</a> | <a href="#">MB6-701 Dump PDF VCE</a> |
| <a href="#">70-465 Dump PDF VCE</a> | <a href="#">70-687 Dump PDF VCE</a> | <a href="#">77-885 Dump PDF VCE</a> | <a href="#">MB6-702 Dump PDF VCE</a> |
| <a href="#">70-466 Dump PDF VCE</a> | <a href="#">70-688 Dump PDF VCE</a> | <a href="#">77-886 Dump PDF VCE</a> | <a href="#">MB6-703 Dump PDF VCE</a> |
| <a href="#">70-467 Dump PDF VCE</a> | <a href="#">70-689 Dump PDF VCE</a> | <a href="#">77-887 Dump PDF VCE</a> | <a href="#">MB6-704 Dump PDF VCE</a> |
| <a href="#">70-469 Dump PDF VCE</a> | <a href="#">70-692 Dump PDF VCE</a> | <a href="#">77-888 Dump PDF VCE</a> | <a href="#">MB6-705 Dump PDF VCE</a> |
| <a href="#">70-470 Dump PDF VCE</a> | <a href="#">70-695 Dump PDF VCE</a> | <a href="#">77-891 Dump PDF VCE</a> | <a href="#">MB6-884 Dump PDF VCE</a> |
| <a href="#">70-473 Dump PDF VCE</a> | <a href="#">70-696 Dump PDF VCE</a> | <a href="#">98-349 Dump PDF VCE</a> | <a href="#">MB6-885 Dump PDF VCE</a> |
| <a href="#">70-480 Dump PDF VCE</a> | <a href="#">70-697 Dump PDF VCE</a> | <a href="#">98-361 Dump PDF VCE</a> | <a href="#">MB6-886 Dump PDF VCE</a> |
| <a href="#">70-481 Dump PDF VCE</a> | <a href="#">70-698 Dump PDF VCE</a> | <a href="#">98-362 Dump PDF VCE</a> | <a href="#">MB6-889 Dump PDF VCE</a> |
| <a href="#">70-482 Dump PDF VCE</a> | <a href="#">70-734 Dump PDF VCE</a> | <a href="#">98-363 Dump PDF VCE</a> | <a href="#">MB6-890 Dump PDF VCE</a> |
| <a href="#">70-483 Dump PDF VCE</a> | <a href="#">70-740 Dump PDF VCE</a> | <a href="#">98-364 Dump PDF VCE</a> | <a href="#">MB6-892 Dump PDF VCE</a> |
| <a href="#">70-484 Dump PDF VCE</a> | <a href="#">70-741 Dump PDF VCE</a> | <a href="#">98-365 Dump PDF VCE</a> | <a href="#">MB6-893 Dump PDF VCE</a> |

### Cisco Exams List

|                                      |                                      |                                      |                                      |
|--------------------------------------|--------------------------------------|--------------------------------------|--------------------------------------|
| <a href="#">010-151 Dump PDF VCE</a> | <a href="#">350-018 Dump PDF VCE</a> | <a href="#">642-737 Dump PDF VCE</a> | <a href="#">650-667 Dump PDF VCE</a> |
| <a href="#">100-105 Dump PDF VCE</a> | <a href="#">352-001 Dump PDF VCE</a> | <a href="#">642-742 Dump PDF VCE</a> | <a href="#">650-669 Dump PDF VCE</a> |
| <a href="#">200-001 Dump PDF VCE</a> | <a href="#">400-051 Dump PDF VCE</a> | <a href="#">642-883 Dump PDF VCE</a> | <a href="#">650-752 Dump PDF VCE</a> |
| <a href="#">200-105 Dump PDF VCE</a> | <a href="#">400-101 Dump PDF VCE</a> | <a href="#">642-885 Dump PDF VCE</a> | <a href="#">650-756 Dump PDF VCE</a> |
| <a href="#">200-120 Dump PDF VCE</a> | <a href="#">400-151 Dump PDF VCE</a> | <a href="#">642-887 Dump PDF VCE</a> | <a href="#">650-968 Dump PDF VCE</a> |
| <a href="#">200-125 Dump PDF VCE</a> | <a href="#">400-201 Dump PDF VCE</a> | <a href="#">642-889 Dump PDF VCE</a> | <a href="#">700-001 Dump PDF VCE</a> |
| <a href="#">200-150 Dump PDF VCE</a> | <a href="#">400-251 Dump PDF VCE</a> | <a href="#">642-980 Dump PDF VCE</a> | <a href="#">700-037 Dump PDF VCE</a> |
| <a href="#">200-155 Dump PDF VCE</a> | <a href="#">400-351 Dump PDF VCE</a> | <a href="#">642-996 Dump PDF VCE</a> | <a href="#">700-038 Dump PDF VCE</a> |
| <a href="#">200-310 Dump PDF VCE</a> | <a href="#">500-006 Dump PDF VCE</a> | <a href="#">642-997 Dump PDF VCE</a> | <a href="#">700-039 Dump PDF VCE</a> |
| <a href="#">200-355 Dump PDF VCE</a> | <a href="#">500-007 Dump PDF VCE</a> | <a href="#">642-998 Dump PDF VCE</a> | <a href="#">700-101 Dump PDF VCE</a> |
| <a href="#">200-401 Dump PDF VCE</a> | <a href="#">500-051 Dump PDF VCE</a> | <a href="#">642-999 Dump PDF VCE</a> | <a href="#">700-104 Dump PDF VCE</a> |
| <a href="#">200-601 Dump PDF VCE</a> | <a href="#">500-052 Dump PDF VCE</a> | <a href="#">644-066 Dump PDF VCE</a> | <a href="#">700-201 Dump PDF VCE</a> |
| <a href="#">210-060 Dump PDF VCE</a> | <a href="#">500-170 Dump PDF VCE</a> | <a href="#">644-068 Dump PDF VCE</a> | <a href="#">700-205 Dump PDF VCE</a> |
| <a href="#">210-065 Dump PDF VCE</a> | <a href="#">500-201 Dump PDF VCE</a> | <a href="#">644-906 Dump PDF VCE</a> | <a href="#">700-260 Dump PDF VCE</a> |
| <a href="#">210-250 Dump PDF VCE</a> | <a href="#">500-202 Dump PDF VCE</a> | <a href="#">646-048 Dump PDF VCE</a> | <a href="#">700-270 Dump PDF VCE</a> |
| <a href="#">210-255 Dump PDF VCE</a> | <a href="#">500-254 Dump PDF VCE</a> | <a href="#">646-365 Dump PDF VCE</a> | <a href="#">700-280 Dump PDF VCE</a> |
| <a href="#">210-260 Dump PDF VCE</a> | <a href="#">500-258 Dump PDF VCE</a> | <a href="#">646-580 Dump PDF VCE</a> | <a href="#">700-281 Dump PDF VCE</a> |
| <a href="#">210-451 Dump PDF VCE</a> | <a href="#">500-260 Dump PDF VCE</a> | <a href="#">646-671 Dump PDF VCE</a> | <a href="#">700-295 Dump PDF VCE</a> |
| <a href="#">210-455 Dump PDF VCE</a> | <a href="#">500-265 Dump PDF VCE</a> | <a href="#">646-985 Dump PDF VCE</a> | <a href="#">700-501 Dump PDF VCE</a> |
| <a href="#">300-070 Dump PDF VCE</a> | <a href="#">500-275 Dump PDF VCE</a> | <a href="#">648-232 Dump PDF VCE</a> | <a href="#">700-505 Dump PDF VCE</a> |
| <a href="#">300-075 Dump PDF VCE</a> | <a href="#">500-280 Dump PDF VCE</a> | <a href="#">648-238 Dump PDF VCE</a> | <a href="#">700-601 Dump PDF VCE</a> |
| <a href="#">300-080 Dump PDF VCE</a> | <a href="#">500-285 Dump PDF VCE</a> | <a href="#">648-244 Dump PDF VCE</a> | <a href="#">700-602 Dump PDF VCE</a> |
| <a href="#">300-085 Dump PDF VCE</a> | <a href="#">500-290 Dump PDF VCE</a> | <a href="#">648-247 Dump PDF VCE</a> | <a href="#">700-603 Dump PDF VCE</a> |
| <a href="#">300-101 Dump PDF VCE</a> | <a href="#">500-801 Dump PDF VCE</a> | <a href="#">648-375 Dump PDF VCE</a> | <a href="#">700-701 Dump PDF VCE</a> |
| <a href="#">300-115 Dump PDF VCE</a> | <a href="#">600-199 Dump PDF VCE</a> | <a href="#">648-385 Dump PDF VCE</a> | <a href="#">700-702 Dump PDF VCE</a> |
| <a href="#">300-135 Dump PDF VCE</a> | <a href="#">600-210 Dump PDF VCE</a> | <a href="#">650-032 Dump PDF VCE</a> | <a href="#">700-703 Dump PDF VCE</a> |
| <a href="#">300-160 Dump PDF VCE</a> | <a href="#">600-211 Dump PDF VCE</a> | <a href="#">650-042 Dump PDF VCE</a> | <a href="#">700-801 Dump PDF VCE</a> |
| <a href="#">300-165 Dump PDF VCE</a> | <a href="#">600-212 Dump PDF VCE</a> | <a href="#">650-059 Dump PDF VCE</a> | <a href="#">700-802 Dump PDF VCE</a> |
| <a href="#">300-180 Dump PDF VCE</a> | <a href="#">600-455 Dump PDF VCE</a> | <a href="#">650-082 Dump PDF VCE</a> | <a href="#">700-803 Dump PDF VCE</a> |
| <a href="#">300-206 Dump PDF VCE</a> | <a href="#">600-460 Dump PDF VCE</a> | <a href="#">650-127 Dump PDF VCE</a> | <a href="#">810-403 Dump PDF VCE</a> |
| <a href="#">300-207 Dump PDF VCE</a> | <a href="#">600-501 Dump PDF VCE</a> | <a href="#">650-128 Dump PDF VCE</a> | <a href="#">820-424 Dump PDF VCE</a> |
| <a href="#">300-208 Dump PDF VCE</a> | <a href="#">600-502 Dump PDF VCE</a> | <a href="#">650-148 Dump PDF VCE</a> | <a href="#">840-425 Dump PDF VCE</a> |
| <a href="#">300-209 Dump PDF VCE</a> | <a href="#">600-503 Dump PDF VCE</a> | <a href="#">650-159 Dump PDF VCE</a> |                                      |
| <a href="#">300-210 Dump PDF VCE</a> | <a href="#">600-504 Dump PDF VCE</a> | <a href="#">650-281 Dump PDF VCE</a> |                                      |
| <a href="#">300-320 Dump PDF VCE</a> | <a href="#">640-692 Dump PDF VCE</a> | <a href="#">650-393 Dump PDF VCE</a> |                                      |
| <a href="#">300-360 Dump PDF VCE</a> | <a href="#">640-875 Dump PDF VCE</a> | <a href="#">650-472 Dump PDF VCE</a> |                                      |
| <a href="#">300-365 Dump PDF VCE</a> | <a href="#">640-878 Dump PDF VCE</a> | <a href="#">650-474 Dump PDF VCE</a> |                                      |
| <a href="#">300-370 Dump PDF VCE</a> | <a href="#">640-911 Dump PDF VCE</a> | <a href="#">650-575 Dump PDF VCE</a> |                                      |
| <a href="#">300-375 Dump PDF VCE</a> | <a href="#">640-916 Dump PDF VCE</a> | <a href="#">650-621 Dump PDF VCE</a> |                                      |
| <a href="#">300-465 Dump PDF VCE</a> | <a href="#">642-035 Dump PDF VCE</a> | <a href="#">650-663 Dump PDF VCE</a> |                                      |
| <a href="#">300-470 Dump PDF VCE</a> | <a href="#">642-732 Dump PDF VCE</a> | <a href="#">650-665 Dump PDF VCE</a> |                                      |
| <a href="#">300-475 Dump PDF VCE</a> | <a href="#">642-747 Dump PDF VCE</a> | <a href="#">650-754 Dump PDF VCE</a> |                                      |

# HOT EXAMS

## Cisco

[100-105 Dumps VCE PDF](#)  
[200-105 Dumps VCE PDF](#)  
[300-101 Dumps VCE PDF](#)  
[300-115 Dumps VCE PDF](#)  
[300-135 Dumps VCE PDF](#)  
[300-320 Dumps VCE PDF](#)  
[400-101 Dumps VCE PDF](#)  
[640-911 Dumps VCE PDF](#)  
[640-916 Dumps VCE PDF](#)

## Microsoft

[70-410 Dumps VCE PDF](#)  
[70-411 Dumps VCE PDF](#)  
[70-412 Dumps VCE PDF](#)  
[70-413 Dumps VCE PDF](#)  
[70-414 Dumps VCE PDF](#)  
[70-417 Dumps VCE PDF](#)  
[70-461 Dumps VCE PDF](#)  
[70-462 Dumps VCE PDF](#)  
[70-463 Dumps VCE PDF](#)  
[70-464 Dumps VCE PDF](#)  
[70-465 Dumps VCE PDF](#)  
[70-480 Dumps VCE PDF](#)  
[70-483 Dumps VCE PDF](#)  
[70-486 Dumps VCE PDF](#)  
[70-487 Dumps VCE PDF](#)

## CompTIA

[220-901 Dumps VCE PDF](#)  
[220-902 Dumps VCE PDF](#)  
[N10-006 Dumps VCE PDF](#)  
[SY0-401 Dumps VCE PDF](#)