



Exam Code: HP0-J18

Exam Name: Implementing HP StorageWorks EVA
Solutions

Vendor: HP

Version: DEMO

Part: A

1: Which factor, in addition to storage and storage growth, is a typical driver for the implementation of Enterprise Virtual Array 8000 solutions?

- A.throughput
- B.data availability
- C.backup window
- D.management cost

Correct Answers: A

2: What happens if an HSV controller reaches a critical temperature?

- A.Ungrouped disks are powered off.
- B.Cache is put in write-through mode.
- C.Unused host ports are deactivated.
- D.Array shuts down after 180 seconds.

Correct Answers: B

3: You have a host connected to an EVA6000 using two HBAs. You find that the EVA is only accessible through one HBA. What are the possible causes? (Select three.)

- A.There is a faulty FC cable.
- B.The Fabric is not properly zoned.
- C.One HSV controller is powered off.
- D.Virtual disk properties are set for no failback.
- E.The wrong HBA WWID was added to the host-defined ports.

Correct Answers: A B E

4: When a cache battery fails on and EVA8000, why is it important to replace this as soon as possible?

- A.No units will be presented if the second battery also fails.
- B.Primary controller is disabled until cache battery is replaced.
- C.Secondary controller owns all units until battery status changes.
- D.The cache works in write through mode on the primary controller.

Correct Answers: A

5: Which replication method could cause an overcommit situation? (Select two.)

- A.clone
- B.Vsnap
- C.snapclone
- D.fully allocated snapshot
- E.demand-allocated snapshot

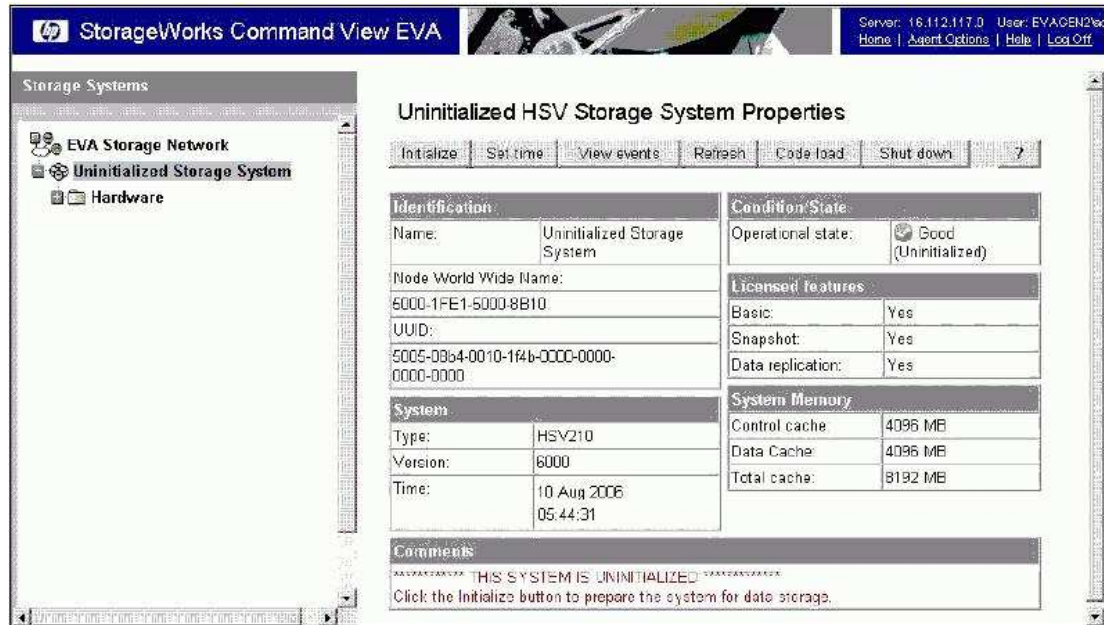
Correct Answers: B E

6: The occupancy alarm level on an EVA4000 containing one disk group is set to 90%. When will an event be generated on the Command View EVA management station?

- A.when a virtual disk is filled above 90%
- B.when 90% of space is allocated on a single disk
- C.when 90% of disk slots are occupied in the array
- D.when usage of disk space within the disk group is above 90%

Correct Answers: D

7: Click the Exhibit button. Which EVA product is being implemented?



- A.EVA3000
- B.EVA5000
- C.EVA4000
- D.EVA6000
- E.EVA8000

Correct Answers: E

8: How many PSEGs are used in a Vraid5 Rstore?

- A.3+1
- B.3+2
- C.4+1
- D.4+2
- E.4+3

Correct Answers: C

9: Which tool is used to implement redundant paths to a Vdisk from an EVA4000/6000/8000 on an HP-UX system?

- A.SAM
- B.altPath
- C.PVlinks
- D.MPIO DSM

Correct Answers: C

10: What is a characteristic of Vraid0? (Select three.)

A.4+0 PSEGs per Rstore

B.4 +4 PSEGs per Rstore

C.good read and write access

D.no disk failure data protection

E.single disk failure data protection

F.good read and poor write access

Correct Answers: A C D