



Exam Code: HP0-053

Exam Name: Enterprise Integration and Management of
HP ProLiant Servers

Vendor: HP

Version: DEMO

Part: A

1: What is a valid method to configure iLO?

- A.SmartStart
- B.iLO Setup Utility
- C.iLO Rom Based Setup Utility (RBSU)
- D.Simple Network Management Protocol (SNMP)

Correct Answers: C

2: When must the Vulnerability and Patch Management (VPM) Acquisitions Utility be run separately from the VPM server?

- A.when the VPM server has no direct access to the Internet
- B.when HP Insight Diagnostic Online is installed on the VPM server
- C.when a software firewall or other application uses TCP port 8000 on the VPM server
- D.when the Version Control Repository Manager is installed on the same server as the VPM server

Correct Answers: A

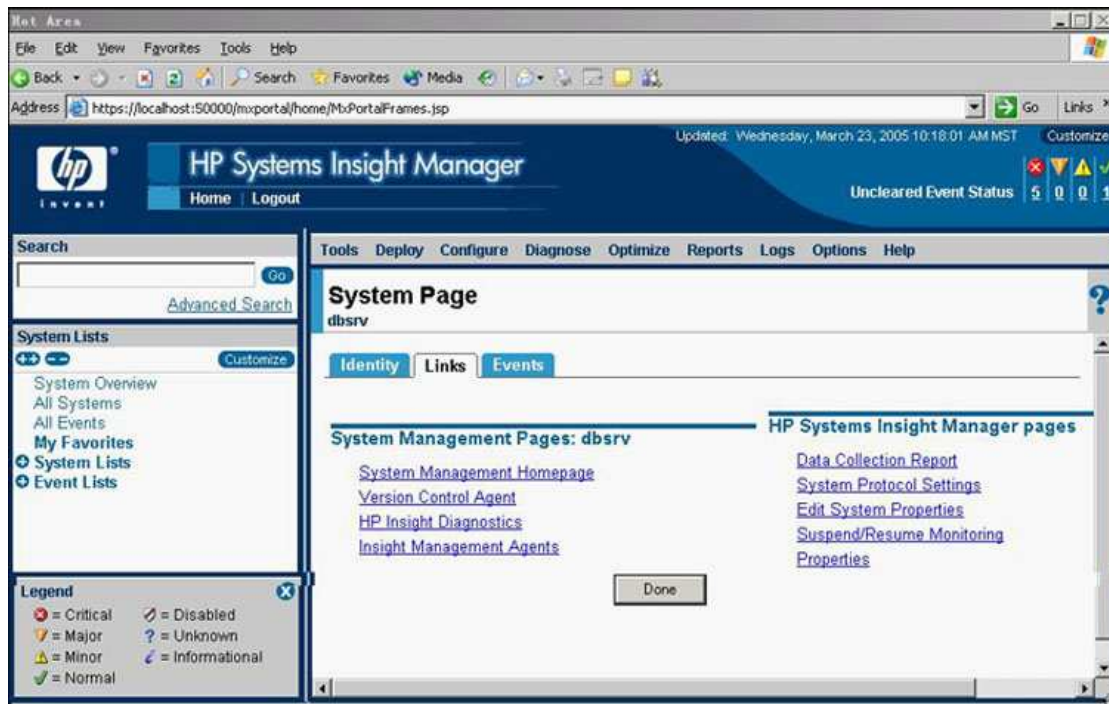
3: Which URL accesses the System Management Homepage?

- A.http://localhost:480
- B.http://localhost:2381
- C.https://localhost:480
- D.https://localhost:2381

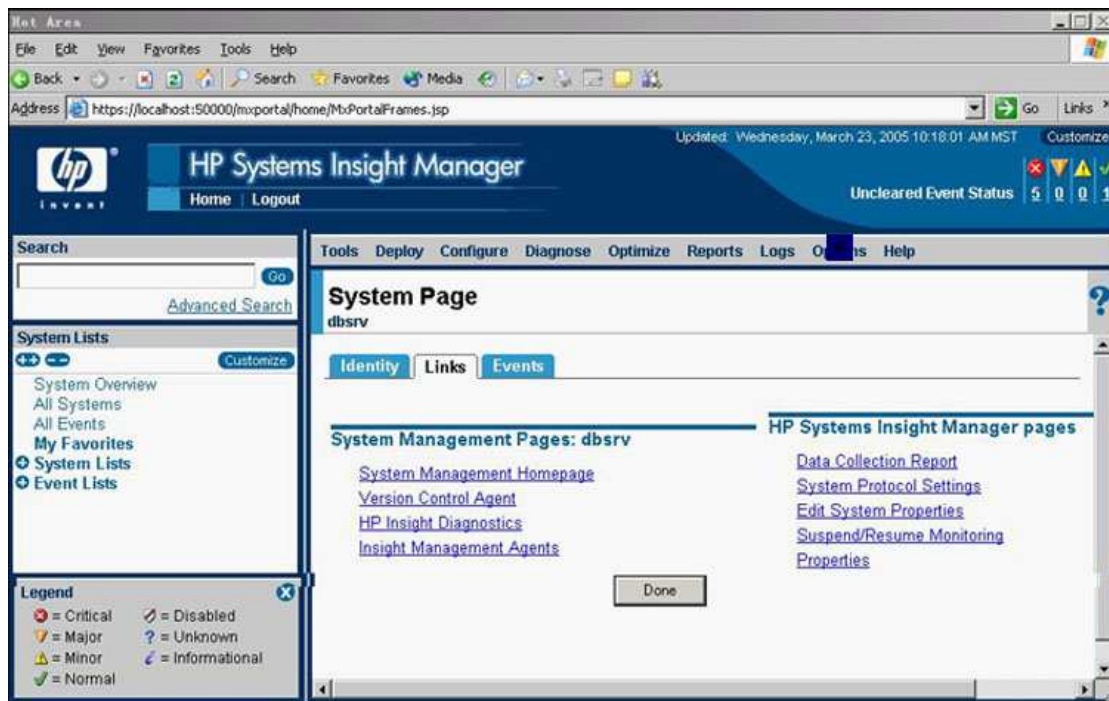
Correct Answers: D

4: Click the Task button.

lick on the drop down menu on the HP SIM Homepage where you would access the Integrated Consoles function for a selected server.



Correct Answers:



5: In a secured data center environment where servers do not have access to the Internet, how do you implement the HP Vulnerability and Patch Management solution? (Select three.)

- A.install HP VPM Server in the secured network
- B.install HP VPM Server outside the secured network
- C.install HP Systems Insight Manager in the secured network
- D.install HP VPM Acquisition Utility inside the secured network
- E.install HP VPM Acquisition Utility outside the secured network
- F.install HP Systems Insight Manager outside the secured network

Correct Answers: A C E

6: Within the HP Systems Insight Manager console, what does the blue icon under the SW column/tab indicate?

- A. At least one component (softpaq) needs a major update.
- B. At least one component (softpaq) needs a minor update.
- C. The server could not be contacted for version information.
- D. All device components match the version control repository.

Correct Answers: C

7: Which component within the HP Systems Insight Manager and relevant Essential software has the capability to verify antivirus signatures and display notification when they are expired?

- A. HP Bastille for Windows
- B. HP Security Assessment Manager
- C. HP Vulnerability and Patch Management
- D. HP Version Control Repository Manager

Correct Answers: C

8: Click the Task button.

In the graphic, click on the icon for the system on which Vulnerability and Patch Management has discovered a critical vulnerability.

The screenshot shows the HP Systems Insight Manager console. At the top, there's a header with the HP logo and navigation tabs: Home, Logout, Tools, Deploy, Configure, Diagnose, Optimize, Reports, Logs, Options, Help. Below the header, there's a section titled "All Systems". Under this section, there's a "View as:" dropdown set to "table". To the right of the dropdown is a "Customize" button. Below the dropdown, there's a summary line: "Systems in table: 0 Critical 0 Major 0 Minor 7 Normal 0 Unknown Total: 7". Below this is a table with columns: HW, MP, SW, PE, VPM, System Name, System Type, System Address, Product Name, OS Name. The table contains 7 rows of system data. The VPM column contains icons: a red 'X' for pva2, a yellow triangle for ianeway, a green checkmark for neelix, a green checkmark for taqlinux.america..., a green checkmark for wakeme.mro.cpgcorp..., a green checkmark for pva3, and a green checkmark for pva1. A red circle is drawn around the VPM column icons, highlighting the red 'X' for pva2. At the bottom of the console, there are buttons: "Save Selection As...", "Delete", "Print", and "Done".

HW	MP	SW	PE	VPM	System Name	System Type	System Address	Product Name	OS Name
✓	✓	?	✓	✗	pva2	Server	16.101.168.140	ProLiant ML3...	Microsoft Win...
✓	✓	?	✓	⚠	ianeway	Server	16.101.176.206		
✓	✓	?	✓	✓	neelix	Server	16.101.176.205		
✓	✓	?	✓	✓	taqlinux.america...	Server	16.129.21.116	ProLiant 1600	Linux - Red H...
✓	✓	?	✓	✓	wakeme.mro.cpgcorp...	Server	16.129.17.177	ProLiant 1600	Linux - Red H...
✓	✓	?	✓	✓	pva3	Server	16.101.168.141	ProLiant ML3...	Microsoft Win...
✓	✓	?	✓	✓	pva1	Unknown	16.101.168.139		

Correct Answers:

Hot Area

Updated: Thursday, September 2, 2004 9:30:25 AM CDT

HP Systems Insight Manager

Home Logout

Uncleared Event Status 8 9

Tools Deploy Configure Diagnose Optimize Reports Logs Options Help

All Systems

View as: table Customize

Systems in table: 0 Critical 0 Major 0 Minor 7 Normal 0 Unknown Total: 7

<input type="checkbox"/>	HW	MP	SW	PF	VPM	System Name	System Type	System Address	Product Name	OS Name
<input checked="" type="checkbox"/>	✓	?	✓	✓	✗	pva2	Server	16.101.168.140	ProLiant ML3...	Microsoft Win...
<input type="checkbox"/>	✓	?	✓	✓	✗	janeway	Server	16.101.176.206		
<input type="checkbox"/>	✓	?	✓	✓	✓	neelix	Server	16.101.176.205		
<input type="checkbox"/>	✓	?	✓	✓	✓	taglinux.americas.cpgc...	Server	16.129.21.116	ProLiant 1600	Linux - Red H...
<input type="checkbox"/>	✓	?	✓	✓	✓	wakeme.mro.cpgcorp....	Server	16.129.17.177	ProLiant 1600	Linux - Red H...
<input type="checkbox"/>	✓	?	✓	✓	✓	pva3	Server	16.101.168.141	ProLiant ML3...	Microsoft Win...
<input checked="" type="checkbox"/>	✓	?	✓	✓	✓	pva1	Unknown	16.101.168.139		

Save Selection As... Delete Print

Done

9: Which agents are polled by HP Systems Insight Manager to obtain hardware status information that is subsequently stored in the database? (Select two.)

- A.DMI Agent
- B.SNMP Agent
- C.Insight Manager Agent
- D.Performance Management Agent

Correct Answers: A C

10: Which components are used in the HP Vulnerability and Patch Management solution within HP Systems Insight Manager? (Select two.)

- A.HP Version Control Agent
- B.HP Insight Management Agent
- C.HP Bastille Security technology
- D.Harris STAT scanning technology
- E.HP Radia patch management technology

Correct Answers: D E