



Exam Code: fm0-301

Exam Name: filemaker7 developer essentials exam

Vendor: FileMaker

Version: DEMO

Part: A

1: What is the maximum number of files that can be hosted on FileMaker Server 7?

- A.125
- B.250
- C.350
- D.500
- E.The number is limited only by server hardware.

Correct Answers: A

2: What is the maximum number of characters that can be entered or imported into a text field in FileMaker Pro 7?

- A.64 thousand
- B.1 million
- C.1 billion
- D.1 trillion
- E.Number of characters is limited only by disk space.

Correct Answers: C

3: If a field in FileMaker Pro 7 has been set to validate Always, which three actions will trigger validation on that field? (Choose three.)

- A.importing data into that field
- B.exporting data from that field
- C.editing data in the field using Instant Web Publishing
- D.clicking into the field, then immediately exiting the field
- E.attempting to change the value of the field using a Set Field[] script step

Correct Answers: A C E

4: A number field in FileMaker Pro 7 called AmountPaid is set to auto-enter the following formula:.

```
Case (
  AmountPaid > AmountDue;
    TextColor (AmountPaid ; RGB (0; 255 ; 0));
  AmountPaid > 0 ;
    TextColor (AmountPaid ; RGB (255 ; 0 ; 0));
  AmountPaid
)
```

The Do not replace existing value of field (if any) option is unchecked.

Which statement is true?

- A.The calculation will only be evaluated the first time a value is entered into AmountPaid .
- B.A user will not be able to manually edit the field once the calculation has been evaluated.
- C.If the value in the AmountDue field is changed, the AmountPaid field will be re-evaluated.
- D.The calculation will prevent a user from entering an incorrect value into the AmountPaid field.

Correct Answers: C

5: A database has two tables, Planet and Moon. Moons are related to a single planet and their relationship is set to delete related records in the Moon table when a Planet record is deleted. Which two things happen when the Planet table is deleted from the Tables tab of the Define Database dialog? (Choose two.)

- A. All data in the Planet table are deleted.
- B. All records in the Moon table are deleted.
- C. All records in the Moon table remain unaffected.
- D. All records in the Moon table are deleted if the option to "Also remove occurrences of these tables in the graph" was selected when deleting the Planet table.
- E. All table occurrences of both Planet and Moon tables are removed if the option to "Also remove occurrences of these tables in the graph" was selected when deleting the Planet table.

Correct Answers: A C

6: Which two statements about relationships are true in FileMaker Pro 7? (Choose two.)

- A. The > operator only works using numeric match fields.
- B. You can build a relationship using multiple match fields.
- C. It is possible to create a valid relationship where one match field is unindexed.
- D. A table occurrence must be connected to at least one other table occurrence.
- E. When enabling the option, "Allow creation of records in this table via this relationship", only =, >=, <= will properly populate match keys.

Correct Answers: B C

7: Consider a FileMaker Pro 7 database with the following tables and fields:

```
Customer: customer_id, first_name, last_name
Order: order_id, customer_id, order_date
Product_Orders: order_id, product_id, quantity_ordered
Product: product_id, product_name, unit_price
```

Using only Cartesian (cross or x) relationships between occurrences of these tables, sorting if necessary, which two actions can be performed? (Choose two.)

- A. determine the mode of the order amount
- B. determine the date of the most recent order
- C. display all records from the Customer table in a portal
- D. create a value list that shows all orders for a chosen customer
- E. create a portal to show one record for each product that has ever been ordered

Correct Answers: B C

8: Which three statements are true about field indexing in FileMaker Pro 7? (Choose three.)

- A. Indexing improves the speed at which finds are performed.
- B. Value lists require at least one of any field they reference to be indexed.
- C. To establish a relationship between two fields, both fields are required to be indexed.
- D. A value index, used in establishing relationships, stores up to 60 primary characters or digits per return-delimited line.
- E. Using Unicode or ASCII as the default language by which a field is indexed causes sorts on that

field to be case sensitive.

Correct Answers: A B E

9: Click the Exhibit button.

You want to build a FileMaker Pro 7 database that models a business organizational chart. One person may manage no one or many people. One person may be managed by at most one other person.

You want to build the system in such a way that a single layout showing information about a person can display both the name of the current person's manager (if any) and the names of all people managed by the current person.

What is the minimum number of tables you must define in the Tables tab of the Define Database dialog to construct the layout?

The screenshot shows a FileMaker Pro 7 interface. At the top, there is a purple header bar with the text "Employee". Below this, the record for an employee is displayed with the following fields and values:

EmployeeID	2
FirstName	Pamela
LastName	Dreyfus
Department	Finance
Title	VP Finance

At the bottom left of the record area, it says "Manager Denise Garcia". To the right of the record area is a table titled "Direct Reports". The table has three columns and six rows. The first three rows contain data:

Direct Reports		
Nancy	Eison	Executive Comptroller
Dennis	Estrella	Executive Assistant
Luke	Forest	Purchasing Agent

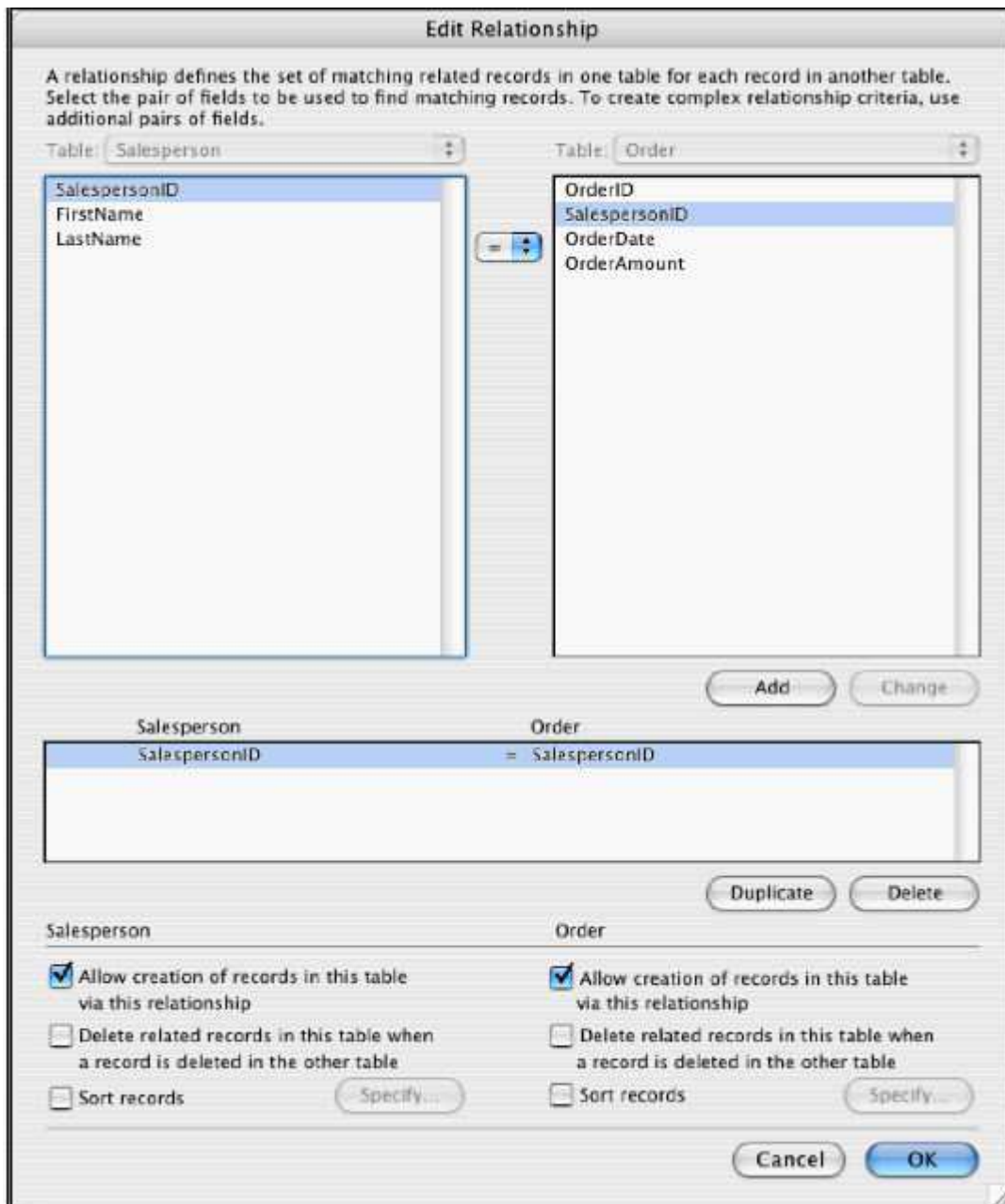
- A.one
- B.two
- C.three
- D.four

Correct Answers: A

10: Click the Exhibit button

Consider a FileMaker Pro 7 database with two tables called Salesperson and Order, and a relationship between the two tables based on a SalespersonID field. The relationship is configured as shown in the exhibit. There is a layout called Salesperson Detail, based on the Salesperson table occurrence, with a portal showing Order records via the above relationship.

Which three statements are true? (Choose three.)



- A. Deleting a Salesperson record also deletes all related Order records.
- B. It is possible to create new Order records by importing data into the Salesperson table.
- C. It is possible to create new Salesperson records by importing data into the Order table.
- D. Users may create new Order records by entering data into the portal on the Salesperson Detail layout
- E. It is possible to create a new Salesperson record using a Set Field [] script step in a script that runs in the context of the Order table.
- F. It is possible to create a new Salesperson record by typing into a related salesperson field displayed on a layout that is based on the Order table.

Correct Answers: D E F