



Exam Code: e20-530

Exam Name: networked storage-san specialist exam

Vendor: EMC

Version: DEMO

Part: A

1: What is the recommended minimum amount of memory in a management station for an EMC VisualSAN 4.0 installation in a mid-sized SAN?

- A.256 MB
- B.512 MB
- C.1 GB
- D.2 GB

Correct Answers: C

2: Which describes the non-blocking architecture deployed in M-series switches?

- A.Allows frames to be sent to destination ports based on the receiving ports availability
- B.Switch operations which move data across the bus into CMM and finally to MPC for delivery
- C.Memory based operations which fence partitions of memory into bit-buckets for data delivery
- D.Allows memory segmentation across the s/bar platform permitting data re-direction based on ASIC availability

Correct Answers: A

3: Which native command on a B-series switch will provide data for EMC Customer Service?

- A.showtech
- B.supportshow
- C.supportlogs
- D.switchsupport

Correct Answers: B

4: Which is an EMC recommended best practice when doing fabric zoning?

- A.Single FA zoning
- B.Multiple FA zoning
- C.Single HBA zoning
- D.Multiple HBA zoning

Correct Answers: C

5: Which option is used to prevent mirroring at the host level if the device is already mirrored at the storage level in a PowerPath Volume Manager 4.x environment?

- A.HW_MIRRORS_ON_REDUNDANT_SW_POLICY
- B.NO_MIRRORS_ON_REDUNDANT_HW_POLICY
- C.SW_MIRRORS_ON_REDUNDANT_HW_POLICY
- D.DISABLE_MIRRORS_ON_REDUNDANT_HW_POLICY

Correct Answers: C

6: A customer cannot discover his Brocade switches within ControlCenter. Which command must be run on the switch to resolve this?

- A.snmpshow
- B.configure

- C.agtcfgset
- D.snmpmibcapset

Correct Answers: D

7: Which CLI command is used for Device Masking?

- A.fzone
- B.symcfg
- C.symmask
- D.symconfig

Correct Answers: C

8: Which two [2] components are required to use SAN Manager?

- A.NAS Agent
- B.FCC Agent
- C.SDM Agent
- D.SAN Manager license

Correct Answers: C D

9: Which Cisco tool is used to monitor, configure and manage multiple MDS switches?

- A.Device Tools
- B.SAN Manager
- C.Fabric Manager
- D.Connectrix Manager

Correct Answers: C

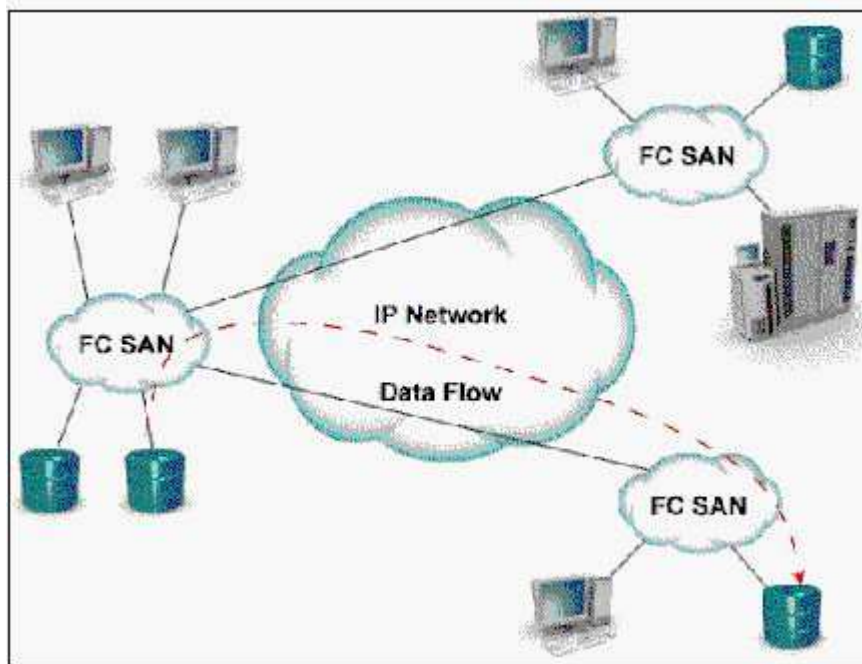
10: From Connectrix Manager, which two [2] levels of user rights can be assigned to specific users?

- A.Fabric Administrator
- B.System Administrator
- C.Product Administrator
- D.Configuration Administrator

Correct Answers: B C

11: Click the Exhibit button.

What is represented by data flow in the picture?



- A.FCIP representation of remote DR
- B.ISCSI representation of remote DR
- C.FCIP representation of remote backup
- D.ISCSI representation of remote backup

Correct Answers: A

12: How many switching modules (line cards) can be inserted into the MDS-9509 Director?

- A.5
- B.6
- C.7
- D.8

Correct Answers: C