



**Vendor:** Apple

**Exam Code:** 9L0-407

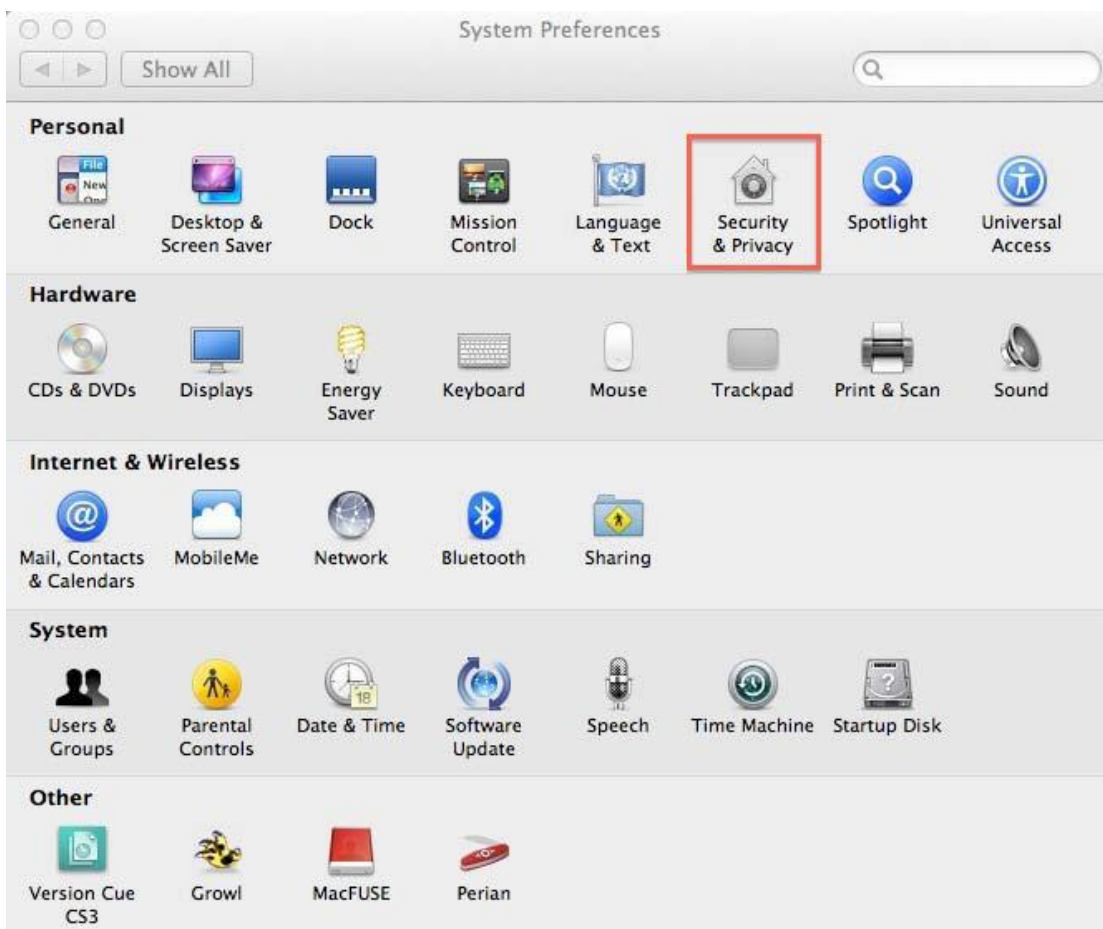
**Exam Name:** Mac Integration Basics 10.7

**Version:** DEMO

1. In the screenshot, click the Icon of the preference pane where you turn on the OS X personal firewall.



Answers:



2. What Windows Server technology provides directory and authentication services?

- A. Exchange Directory
- B. LDAP Directory
- C. Active Directory
- D. Open Directory

**Answers: C**

3. From your Mac, you want to access mail, calendars, and contacts served by a Microsoft Exchange Server. What is the earliest version of Exchange Server for which Lion provides built-in support for this task?

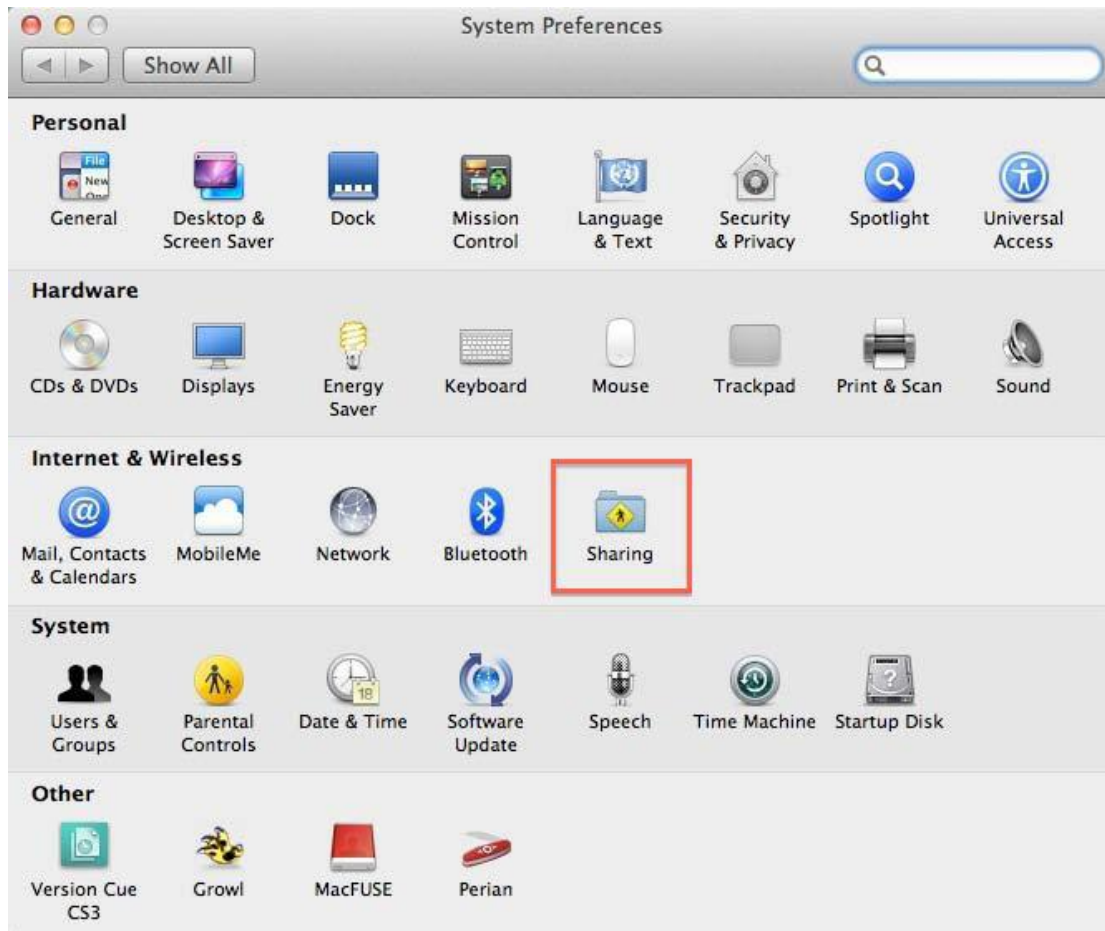
- A. Microsoft Exchange Server 2003
- B. Microsoft Exchange Server 2007 with Service Pack 1 Update Rollup 4
- C. Microsoft Exchange Server 2003 with Service Pack 2
- D. Microsoft Exchange Server 2000 with Service Pack 4
- E. Microsoft Exchange Server 2010

**Answers: B**

4. In the screenshot, click the icon of the preference pane where you configure a Mac to let Windows computers access files on the Mac using the SMB protocol.



**Answers:**



5. Which statement about iChat is true?

- A. iChat can be configured to use a Google Talk account.
- B. In order for a Mac user to use iChat to exchange instant messages with a Windows user, the Windows user must install iChat.
- C. iChat can be configured to use a Microsoft Live Messenger account.
- D. iChat requires users to have an Apple ID account.

**Answers:** A