



Vendor: Microsoft

Exam Code: 70-417

**Exam Name: Upgrading Your Skills to MCSA Windows
Server 2012 Exam**

Version: Demo

QUESTION 1

Your network contains an Active Directory domain named contoso.com. The domain contains two member servers named Server1 and Server2 that run Windows Server 2012. You log on to Server1. You need to retrieve the IP configurations of Server2. Which command should you run from Server1?

- A. `dsquery * -scope base -attrip, server2`
- B. `winrs -r:server2ipconfig`
- C. `winrm get server2`
- D. `ipconfig> server2.ip`

Correct Answer: B

QUESTION 2

Your network contains an Active Directory domain named contoso.com. The domain contains a server named Server1 that runs Windows Server 2012. On a server named Server2, you perform a Server Core Installation of Windows Server 2012. You join Server2 to the contoso.com domain. You need to ensure that you can manage Server2 by using the Computer Management console on Server1. What should you do on Server2?

- A. Run the `Disable-NetFirewallRulecmdlet`.
- B. Run the `Enable-NetFirewallRulecmdlet`.
- C. Run `sconfig.exe` and configure the network settings.
- D. Run `sconfig.exe` and configure remote management.

Correct Answer: B

QUESTION 3

Your network contains an Active Directory domain named contoso.com. The domain contains a server named Server1 that runs Windows Server 2012 and a server named Server2 that runs Windows Server 2008 R2 Service Pack 1 (SP1). Both servers are member servers. On Server2, you install all of the software required to ensure that Server2 can be managed remotely from Server Manager. You need to ensure that you can manage Server2 from Server1 by using Server Manager. Which two tasks should you perform on Server2? (Each correct answer presents part of the solution. Choose two.)

- A. Run the `Configure-SMRemoting.ps1` script.
- B. Run the `Enable-PSSessionConfigurationcmdlet`.
- C. Run the `Set-ExecutionPolicycmdlet`.
- D. Run the `systempropertiesremote.exe` command
- E. Run the `Enable-PSRemotingcmdlet`.

Correct Answer: AC

QUESTION 4

Your network contains an Active Directory domain named contoso.com. The network contains a server named Server1 that runs Windows Server 2012 and a server named Server2 that runs Windows Server 2008 R2 Service Pack 1 (SP1). Server1 and Server2 are member servers. You need to ensure that you can manage Server2 from Server1 by using Server Manager. Which two tasks should you perform? (Each correct answer presents part of the solution. Choose two.)

- A. Install Windows Management Framework 3.0 on Server2.
- B. Install Remote Server Administration Tools on Server1.
- C. Install the Windows PowerShell 2.0 engine on Server1.
- D. Install Microsoft .NET Framework 4 on Server2.
- E. Install Remote Server Administration Tools on Server2.

Correct Answer: AD

QUESTION 5

Your network contains an Active Directory domain named contoso.com. All servers run either Windows Server 2008 R2 or Windows Server 2012. All client computers run either Windows 7 or Windows 8. The domain contains a member server named Server1 that runs Windows Server 2012. Server1 has the File and Storage Services server role installed. On Server1, you create a share named Share1. You need to ensure that users can use Previous Versions to restore the files in Share1. What should you configure on Server1?

- A. A data recovery agent
- B. The Shadow Copies settings
- C. The Recycle Bin properties
- D. A Windows Server Backup schedule

Correct Answer: B

QUESTION 6

You perform a Server Core Installation of Windows Server 2012 on a server named Server1. You need to add a graphical user interface (GUI) to Server1. Which tool should you use?

- A. The setup.exe command
- B. The imagex.exe command
- C. The Install-RoleServicecmdlet
- D. The Add-WindowsFeaturecmdlet

Correct Answer: D

QUESTION 7

You have a server named Server1 that runs Windows Server 2012. Server1 has the Hyper- V server role installed. Server1 is connected to two Fibre Channel SANs and is configured as shown in the following table.

Host bus adapter (HBA) name	Fibre Channel SAN name
HBA1	SAN1
HBA2	SAN2
HBA3	SAN1
HBA4	SAN2

You have a virtual machine named VM1. You need to configure VM1 to connect to SAN1. What should you do first?

- A. Create a virtual Fibre Channel SAN.
- B. Configure network adapter teaming.
- C. Add one HBA.
- D. Create a Hyper-V virtual switch.

Correct Answer: A

QUESTION 8

You have a file server named Server1 that runs Windows Server 2012. Server1 has following hardware configurations:

- 16 GB of RAM
- A single quad-core CPU
- Three network teams that have two network adapters each

You add additional CPUs and RAM to Server1. You repurpose Server1 as a virtualization host. You install the Hyper-V server role on Server1. You need to create four external virtual switches in Hyper-V. Which cmdlet should you run first?

- A. Add-NetLbfoTeamNic
- B. Set-NetAdapter
- C. Remove- NetLbfoTeam
- D. Add-VMNetworkAdapter

Correct Answer: C

QUESTION 9

You have a server named Server1 that runs Windows Server 2012. Server1 has five network adapters. Three of the network adapters are connected to a network named LAN1. The two other network adapters are connected to a network named LAN2. You create a network adapter team named Team1 from two of the adapters connected to LAN1. You create a network adapter team named Team2 from the two adapters connected to LAN2. A company policy states that all server IP addresses must be assigned by using a reserved address in DHCP. You need to identify how many DHCP reservations you must create for Server1. How many reservations should you identify?

- A. 2
- B. 3
- C. 5
- D. 7

Correct Answer: B

QUESTION 10

You have a server named Served that runs Windows Server 2012. You connect three new hard disks to Server 1. You need to create a storage space that contains the three disks. The solution must meet the following requirements:

- Provide fault tolerance if a single disk fails.
- Maximize the amount of useable storage space.

What should you create?

- A. A spanned volume
- B. A simple space
- C. A parity space
- D. A mirrored space

Correct Answer: C

QUESTION 11

You have a server named Server1 that runs a full installation of Windows Server 2012. You need to uninstall the graphical user interface (GUI) on Server1. You must achieve this goal by using the minimum amount of administrative effort. What should you do?

- A. From Server Manager, uninstall the User Interfaces and Infrastructure feature.
- B. From Windows PowerShell, run Uninstall-WindowsFeature PowerShell-ISE.
- C. From Windows PowerShell, run Uninstall-WindowsFeature Desktop-Experience.

D. Reinstall Windows Server 2012 on the server.

Correct Answer: A

QUESTION 12

Your network contains an Active Directory domain named contoso.com. The domain contains two domain controllers. The domain controllers are configured as shown in the following table.

Name	Operating system	Operation master role
DC1	Windows Server 2012	Domain naming master Schema master
DC2	Windows Server 2008 R2	PDC emulator RID master Infrastructure master

In the perimeter network, you install a new server named Server1 that runs Windows Server 2012. Server1 is in a workgroup. You need to perform an offline domain join of Server1 to the contoso.com domain. What should you do first?

- A. Run the djoin.exe command.
- B. Run the dsadd.exe command.
- C. Transfer the PDC emulator role to DC1.
- D. Transfer the infrastructure master role to DC1.

Correct Answer: A

QUESTION 13

Your network contains an Active Directory domain named contoso.com. All domain controllers run Windows Server 2008 R2. One of the domain controllers is named DC1. The network contains a member server named Server1 that runs Windows Server 2012. You need to promote Server1 to a domain controller by using install from media (IFM). What should you do first?

- A. Create a system state backup of DC1.
- B. Run the Active Directory Domain Services Installation Wizard on DC1.
- C. Run the Active Directory Domain Services Configuration Wizard on Server1.
- D. Create IFM media on DC1.
- E. Upgrade DC1 to Windows Server 2012.

Correct Answer: E

QUESTION 14

Your network contains an Active Directory domain named contoso.com. The domain contains two domain controllers named DC1 and DC2. You install Windows Server 2012 on a new computer named DC3. You need to manually configure DC3 as a domain controller. Which tool should you use?

- A. winrm.exe
- B. Server Manager
- C. dcpromo.exe
- D. Active Directory Domains and Trusts

Correct Answer: B

QUESTION 15

Your network contains an Active Directory forest named contoso.com. All domain controllers currently run Windows Server 2008 R2. You plan to install a new domain controller named DC4 that runs Windows Server 2012.

The new domain controller will have the following configurations:

- Schema master
- Global catalog server
- DNS Server role
- Active Directory Certificate Services server role

You need to identify which configurations cannot be fulfilled by using the Active Directory Installation Wizard. Which two configurations should you identify? (Each correct answer presents part of the solution. Choose two.)

- A. Enable the global catalog server.
- B. Install the Active Directory Certificate Services role.
- C. Transfer the schema master.
- D. Install the DNS Server role.

Correct Answer: BC

QUESTION 16

Your network contains an Active Directory forest. The forest contains two domains named contoso.com and corp.contoso.com. The forest contains four domain controllers. The domain controllers are configured as shown in the following table.

Name	Domain	Operating system	Configuration
DC1	contoso.com	Windows Server 2008 R2	PDC emulator Infrastructure master RID master
DC2	contoso.com	Windows Server 2012	Domain naming master Schema master Global catalog
DC3	corp.contoso.com	Windows Server 2008 R2	PDC emulator Infrastructure master RID master
DC4	corp.contoso.com	Windows Server 2012	Global catalog

All domain controllers are DNS servers. In the corp.contoso.com domain, you plan to deploy a new domain controller named DC5. You need to identify which domain controller must be online to ensure that DC5 can be promoted successfully to a domain controller. Which domain controller should you identify?

- A. DC3
- B. DC4
- C. DC2
- D. DC1

Correct Answer: C

QUESTION 17

Your network contains a server named Server1 that runs Windows Server 2012. Server1 has the Hyper-V server role installed. Server1 hosts four virtual machines named VM1, VM2, VM3, and VM4. Server1 is configured as shown in the following table.

Hardware component	Configuration
Processor	Eight quad-core CPUs that have non-uniform memory access (NUMA)
Memory	32 GB of RAM
Disk	Two local 4-TB disks
Network	Eight network adapters VMQ-supported PCI-SIG-supported

VM2 sends and receives large amounts of data over the network. You need to ensure that the network traffic of VM2 bypasses the virtual switches of the parent partition. What should you configure?

- A. NUMA topology
- B. Resource control
- C. Resource metering
- D. Virtual Machine Chimney
- E. The VLAN ID
- F. Processor Compatibility
- G. The startup order
- H. Automatic Start Action
- I. Integration Services
- J. Port mirroring
- K. Single-root I/O virtualization

Correct Answer: K

QUESTION 18

Your network contains a server named Server1 that runs Windows Server 2012. Server1 has the Hyper-V server role installed. Server1 hosts four virtual machines named VM1, VM2, VM3, and VM4. Server1 is configured as shown in the following table.

Hardware component	Configuration
Processor	Eight quad-core CPUs that have non-uniform memory access (NUMA)
Memory	32 GB of RAM
Disk	Two local 4-TB disks
Network	Eight network adapters VMQ-supported PCI-SIG-supported

VM3 is used to test Applications. You need to prevent VM3 from synchronizing its clock to Server1. What should you configure?

- A. NUMA topology
- B. Resource control
- C. Resource metering
- D. Virtual Machine Chimney
- E. The VLAN ID
- F. Processor Compatibility
- G. The startup order
- H. Automatic Start Action
- I. Integration Services
- J. Port mirroring
- K. Single-root I/O virtualization

Correct Answer: I

QUESTION 19

Your network contains a server named Server1 that runs Windows Server 2012. Server1 has the Hyper-V server role installed. Server1 hosts four virtual machines named VM1, VM2, VM3, and VM4. Server1 is configured as shown in the following table.

Hardware component	Configuration
Processor	Eight quad-core CPUs that have non-uniform memory access (NUMA)
Memory	32 GB of RAM
Disk	Two local 4-TB disks
Network	Eight network adapters VMQ-supported PCI-SIG-supported

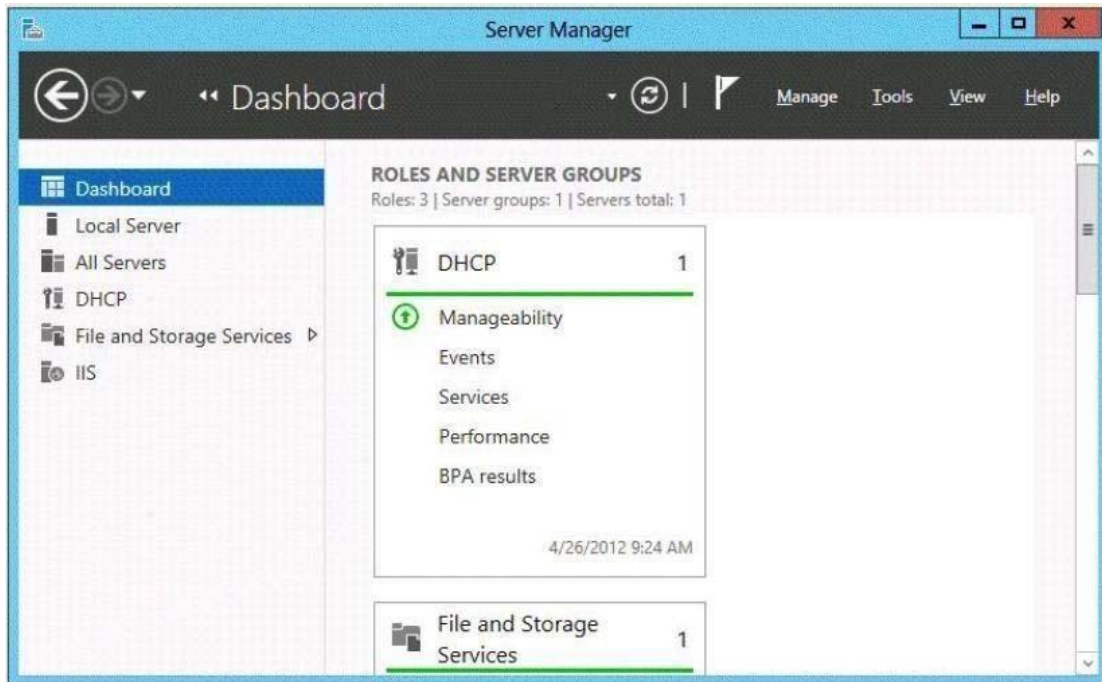
You plan to schedule a complete backup of Server1 by using Windows Server Backup. You need to ensure that the state of VM1 is saved before the backup starts. What should you configure?

- A. NUMA topology
- B. Resource control
- C. Resource metering
- D. Virtual Machine Chimney
- E. The VLAN ID
- F. Processor Compatibility
- G. The startup order
- H. Automatic Start Action
- I. Integration Services
- J. Port mirroring
- K. Single-root I/O visualization

Correct Answer: I

QUESTION 20

Your network contains an Active Directory domain named contoso.com. The domain contains servers named Server1 and Server2 that run Windows Server 2012. Server1 has the IP Address Management (IPAM) Server feature installed. You install the IPAM client on Server2. You open Server Manager on Server2 as shown in the exhibit. You need to manage IPAM from Server2. What should you do first?



- A. On Server2, open Computer Management and connect to Server1.
- B. On Server1, add the Server2 computer account to the IPAM ASM Administrators group.
- C. On Server2, add Server1 to Server Manager.
- D. On Server1, add the Server2 computer account to the IPAM MSM Administrators group.

Correct Answer: C

QUESTION 21

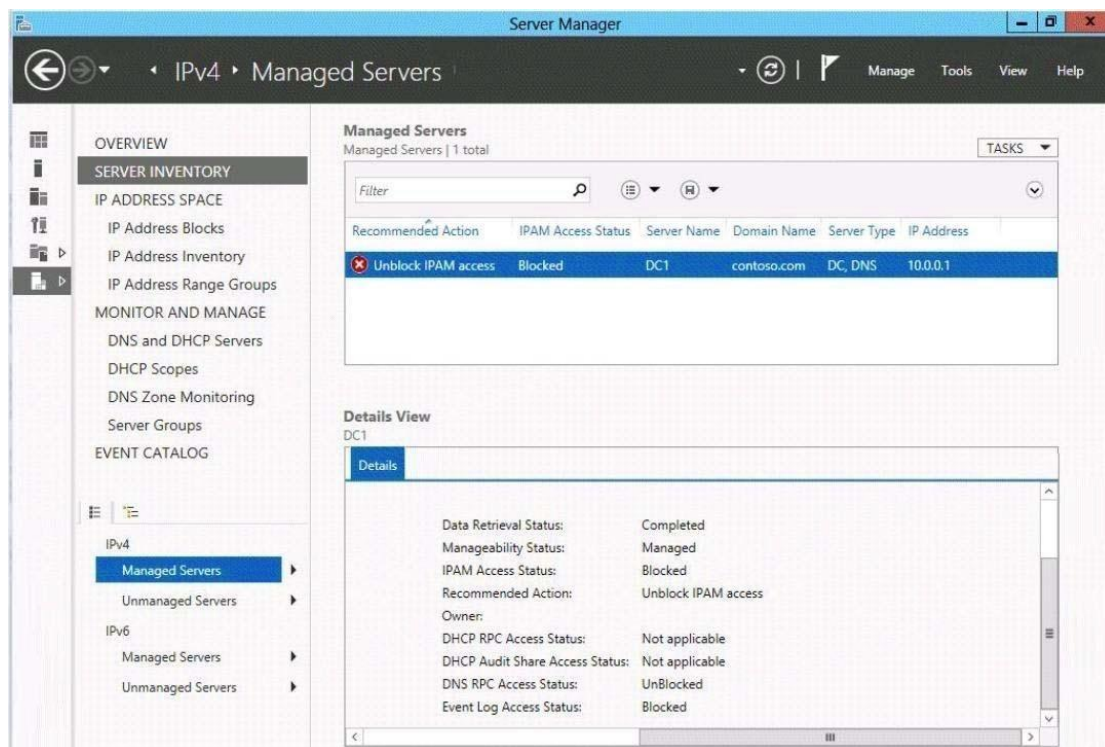
Your network contains an Active Directory domain named contoso.com. The domain contains a server named Server1 that runs Windows Server 2012. Server1 has the IP Address Management (IPAM) Server feature installed. IPAM is configured currently for Group Policy-based provisioning. You need to change the IPAM provisioning method on Server1. What should you do?

- A. Run the ipamgc.exe command.
- B. Run the Set-IPAMConfigurationcmdlet.
- C. Reinstall the IP Address Management (IPAM) Server feature.
- D. Delete IPAM Group Policy objects (GPOs) from the domain.

Correct Answer: C

QUESTION 22

Your network contains an Active Directory domain named contoso.com. The domain contains a domain controller named DC1 and a member server named Server1. Server1 has the IP Address Management (IPAM) Server feature installed. On DC1, you configure Windows Firewall to allow all of the necessary inbound ports for IPAM. On Server1, you open Server Manager as shown in the exhibit. You need to ensure that you can use IPAM on Server1 to manage DNS on DC1. What should you do?



- A. Modify the outbound firewall rules on Server1.
- B. Add Server1 to the Remote Management Users group.
- C. Add Server1 to the Event Log Readers group.
- D. Modify the inbound firewall rules on Server1.

Correct Answer: C

QUESTION 23

Your network contains an Active Directory domain named contoso.com. The domain contains four servers. The servers are configured as shown in the following table.

Server name	Configuration	IP address
Server1	Active Directory Domain Services (AD DS)	192.168.1.100
Server2	DHCP server DNS server File server	192.168.1.101
Server3	Web server	131.107.100.100
Server4	DNS server Network Policy Server (NPS) server	131.107.100.101

You plan to deploy an enterprise certification authority (CA) on a server named Servers. Server5 will be used to issue certificates to domain-joined computers and workgroup computers. You need to identify which server you must use as the certificate revocation list (CRL) distribution point for Server5. Which server should you identify?

- A. Server1
- B. Server3
- C. Server4
- D. Server2

Correct Answer: B

QUESTION 24

Your network contains three Active Directory forests. Each forest contains an Active Directory Rights Management Services (AD RMS) root cluster. All of the users in all of the forests must be able to access protected content from any of the forests. You need to identify the minimum number of AD RMS trusts required. How many trusts should you identify?

- A. 2
- B. 3
- C. 4
- D. 6

Correct Answer: D

QUESTION 25

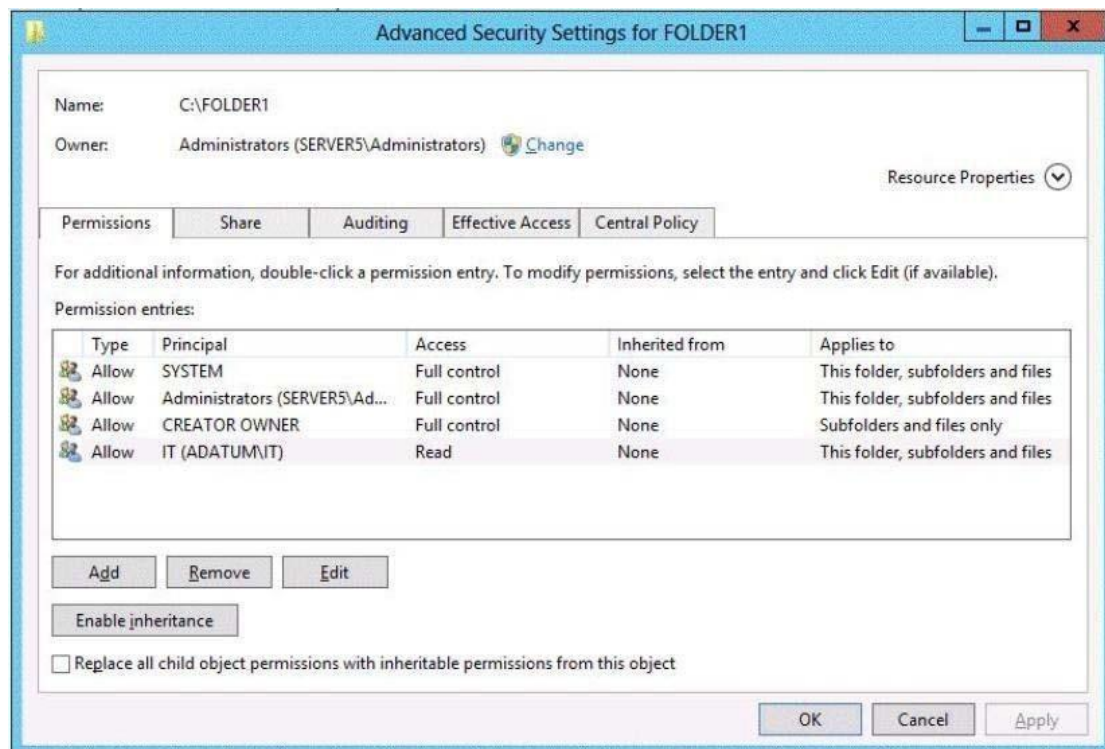
Your network contains two servers named Server1 and Server2 that run Windows Server 2012. Both servers have the Hyper-V server role installed. Server1 and Server2 are located in different offices. The offices connect to each other by using a high-latency WAN link. Server2 hosts a virtual machine named VM1. You need to ensure that you can start VM1 on Server1 if Server2 fails. The solution must minimize hardware costs. What should you do?

- A. On Server2, install the Multipath I/O (MPIO) feature. Modify the storage location of the VHDs for VM1.
- B. From the Hyper-V Settings of Server1, modify the Replication Configuration settings. Enable replication for VM1.
- C. On Server1, install the Multipath I/O (MPIO) feature. Modify the storage location of the VHDs for VM1.
- D. From the Hyper-V Settings of Server2, modify the Replication Configuration settings. Enable replication for VM1.

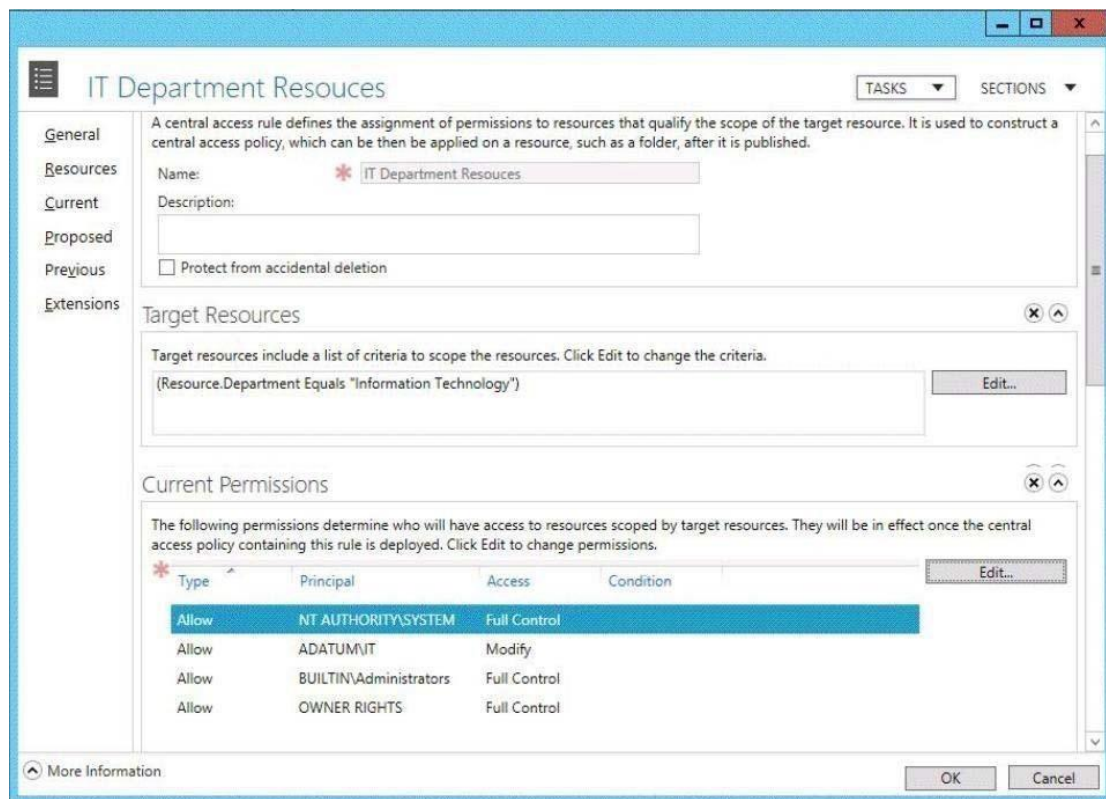
Correct Answer: B

QUESTION 26

Your network contains an Active Directory domain named contoso.com. The network contains a file server named Server1 that runs Windows Server 2012. You create a folder named Folder1. You share Folder1 as Share1. The NTFS permissions on Folder1 are shown in the Folder1 exhibit.



The Everyone group has the Full control Share permission to Folder1. You configure a central access policy as shown in the Central Access Policy exhibit.



Members of the IT group report that they cannot modify the files in Folder1. You need to ensure that the IT group members can modify the files in Folder1. The solution must use central access policies to control the permissions. Which two actions should you perform? (Each correct answer presents part of the solution. Choose two.)

- A. On the Security tab of Folder1, remove the permission entry for the IT group.
- B. On the Classification tab of Folder1, set the classification to "Information Technology".
- C. On the Security tab of Folder1, assign the Modify permission to the Authenticated Users group.
- D. On Share1, assign the Change Share permission to the IT group.
- E. On the Security tab of Folder1, add a conditional expression to the existing permission entry for the IT group.

Correct Answer: BC

QUESTION 27

You have a server named File1 that runs Windows Server 2012. File1 has the File Server role service installed. You plan to back up all shared folders by using Microsoft Online Backup. You download and install the Microsoft Online Backup Service Agent on File1. You need to ensure that you use Windows Server Backup to back up data to Microsoft Online Backup. What should you do?

- A. From Computer Management, add the File1 computer account to the Backup Operators group.
- B. From the Services console, modify the Log On settings of the Microsoft Online Backup Service Agent.
- C. From Windows Server Backup, run the Register Server Wizard.
- D. From a command prompt, run `wbadmin.exe enable backup`.

Correct Answer: C

QUESTION 28

Your network contains an Active Directory domain named contoso.com. The domain contains three servers named Server1, Server2, and Server3 that run Windows Server 2012. All three servers have the Hyper-V server role installed and the Failover Clustering feature installed. Server1 and Server2 are nodes in a failover cluster named Cluster1. Several highly available virtual machines run on Cluster1. Cluster1 has the Hyper-V Replica Broker role installed. The Hyper-V Replica Broker currently runs on Server1. Server3 currently has no virtual machines. You need to configure Cluster1 to be a replica server for Server3, and Server3 to be a replica server for Cluster1. Which two tools should you use? (Each correct answer presents part of the solution. Choose two.)

- A. The Hyper-V Manager console connected to Server3.
- B. The Hyper-V Manager console connected to Server2.
- C. The Failover Cluster Manager console connected to Cluster1.
- D. The Failover Cluster Manager console connected to Server3.
- E. The Hyper-V Manager console connected to Server1.

Correct Answer: AC

QUESTION 29

You have a server named Server1 that runs Windows Server 2012. You modify the properties of a system driver and you restart Server1. You discover that Server1 continuously restarts without starting Windows Server 2012. You need to start Windows Server 2012 on Server1 in the least amount of time. The solution must minimize the amount of data loss. Which Advanced Boot Option should you select?

- A. Repair Your Computer
- B. Disable Driver Signature Enforcement
- C. Last Known Good Configuration (advanced)
- D. Disable automatic restart on system failure

Correct Answer: C

QUESTION 30

You have a file server named Server1 that runs a Server Core Installation of Windows Server 2012. You need to ensure that users can access previous versions of files that are shared on Server1 by using the Previous Versions tab. Which tool should you use?

- A. wbadmin
- B. Diskpart
- C. Storport
- D. Vssadmin

Correct Answer: D

EnsurePass.com Members Features:

1. Verified Answers researched by industry experts.
2. Q&As are downloadable in PDF and VCE format.
3. 98% success Guarantee and **Money Back** Guarantee.
4. Free updates for **180** Days.
5. **Instant Access to download the Items**

View list of All Exam provided:

<http://www.ensurepass.com/certifications?index=A>

To purchase Lifetime Full Access Membership click here:

<http://www.ensurepass.com/user/register>

Valid Discount Code for 2015: JREH-G1A8-XHC6

To purchase the HOT Microsoft Exams:

<u>Microsoft</u>			
70-243	70-347	70-466	70-515
70-246	70-410	70-467	70-516
70-247	70-411	70-480	70-519
70-321	70-412	70-483	70-583
70-331	70-413	70-484	70-640
70-332	70-414	70-485	70-649
70-336	70-417	70-486	70-668
70-337	70-461	70-487	70-680
70-341	70-462	70-488	70-687
70-342	70-463	70-489	70-688
70-346	70-464	70-513	70-689

