

Ensurepass.com Easy Test! Easy Pass!



Vendor: Cisco

Exam Code: 640-893

Exam Name: Supporting Cisco Data Center System
Devices v1.0 (DCTECH)

Version: DEMO

QUESTION 1

Which command-line interface mode is best described by this prompt?

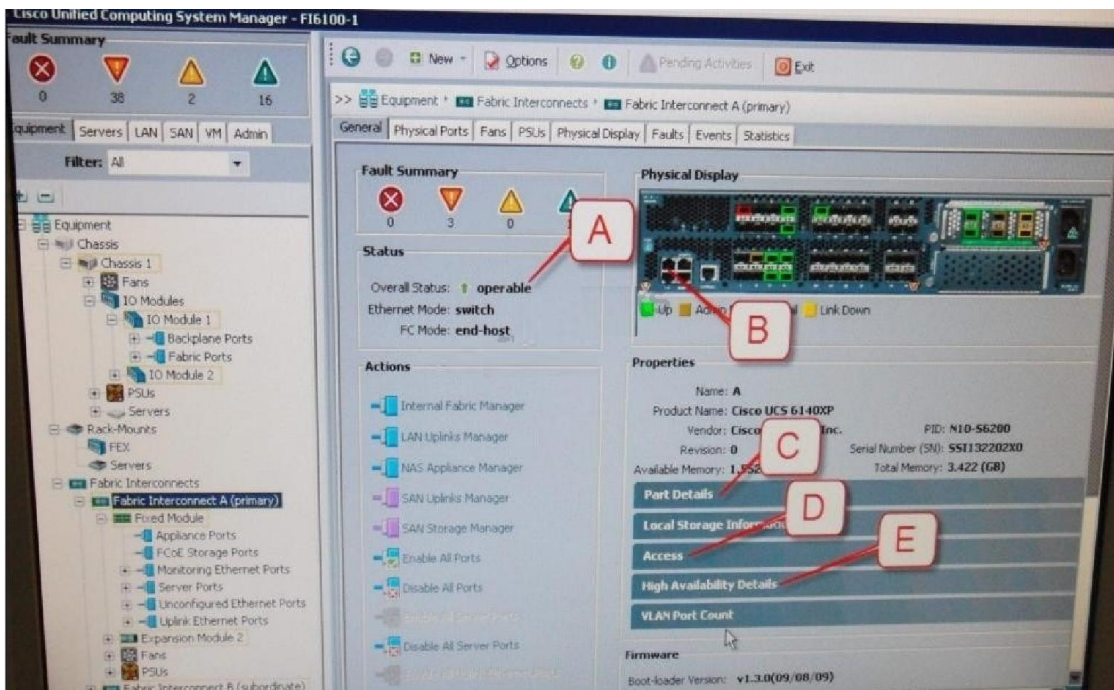
```
UCS-switch-A (nxos)#
```

- A. maintenance mode
- B. EXEC mode
- C. local management mode
- D. global configuration mode
- E. Cisco IOS mode

Answer: B

QUESTION 2

Refer to the exhibit. Where is the best place to see whether the system is ready for a Fabric Interconnect failover?



- A. A - Overall Status operable
- B. B - L1 Connection
- C. C - Part Details
- D. D-Access
- E. E - High Availability Details

Answer: A

QUESTION 3

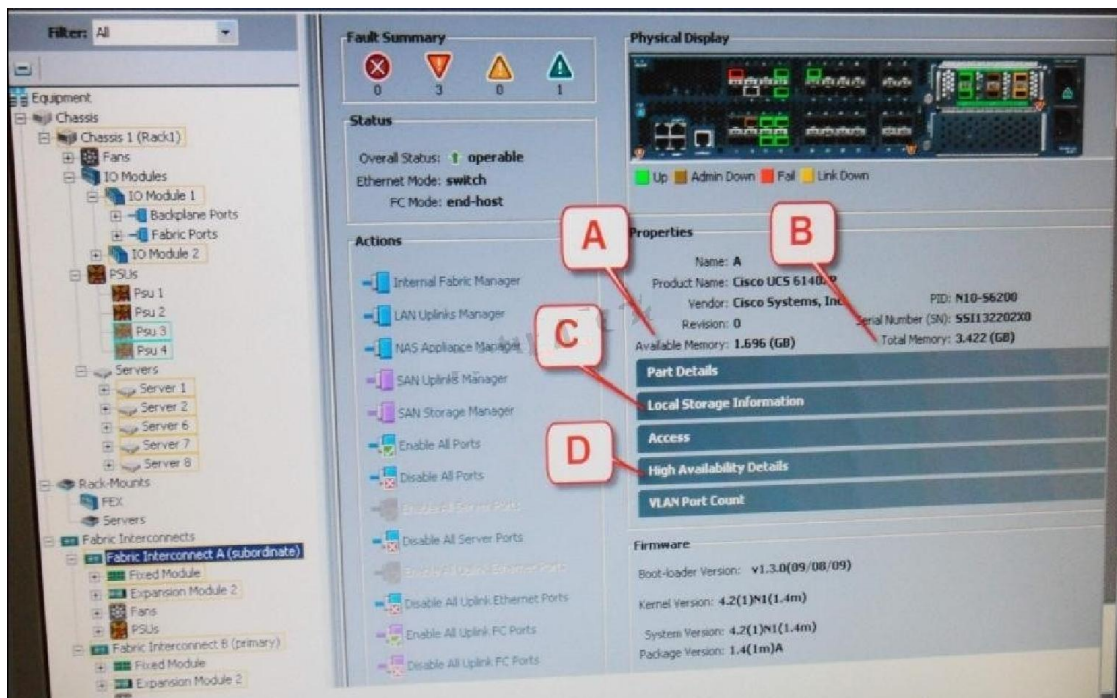
Rafter retaliation or replacement of a Cisco UCS C-Series Rack-Mount Server, the host does not boot, which four options should be verified? (Choose four)

- A. Verify that the front I/O dongle is seated correctly.
- B. Check for loose HDD cables
- C. Reseat or replace the DIMMs
- D. Verify that the host power rails are good and power signals are OK
- E. Reseat the mezzanine card connector
- F. Check the CPU sockets for bent pins
- G. Check the Cisco IMC for fan faults

Answer: ACDF

QUESTION 4

Refer to the exhibit. Where is the best place to see bootflash free space?



- A. A-Available Memory
- B. B - Total Memory
- C. C - Local Storage Information
- D. D - High Availability Details

Answer: C

QUESTION 5

Which two methods are used to upgrade Cisco Integrated Management Controller Firmware on a Cisco UCS Server? (Choose two)

- A. FTP server
- B. TFTP server

- C. USB drive
- D. browser client
- E. DVD drive

Answer: BD

QUESTION 6

Which fabric extender is designed to provide connectivity for rack and blade servers in unified fabric deployments?

- A. Cisco Nexus 1010
- B. Cisco Nexus 3000
- C. Cisco Nexus 4001i
- D. Cisco Nexus 2248TP

Answer: D

QUESTION 7

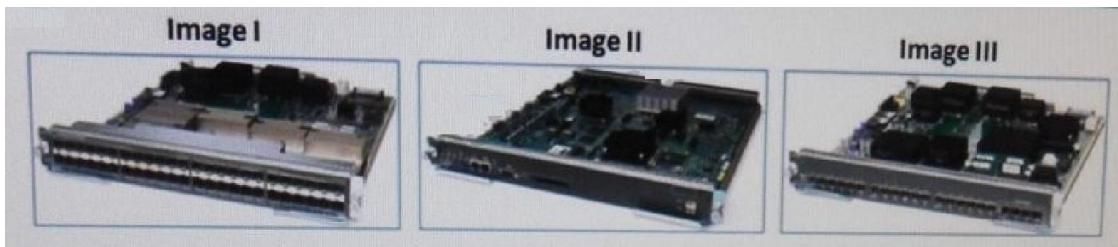
How do you find the serial number of a Cisco UCS 5108 Blade Server chassis?

- A. Use the Cisco UCS Admin.
- B. Use the Cisco UCS Application
- C. Use the Cisco UCS Assistant
- D. Use the Cisco UCS Manager

Answer: D

QUESTION 8

Refer to the exhibit. Which option identifies the correct modules that are used with the Cisco MDS 9500 Series chassis?



- A. Image I is a switching module, Image II is a supervisor module. Image III is a service module
- B. Image I is a service module, Image II is a switching module. Image III is a supervisor module
- C. Image I is a supervisor module. Image II is a service module. Image III is a switching module
- D. Image I is a switching module. Image II is a service module. Image III is a supervisor module

Answer: A

QUESTION 9

Which configuration is supported in the Cisco UCS 5108 Blade Server chassis?

- A. Two Cisco UCS B200 Blade Servers, two Cisco UCS B250 Blade Servers, and one Cisco UCS B440 Blade Server
- B. Two Cisco UCS B200 Blade Servers, two Cisco UCS B250 Blade Servers, and two Cisco UCS B440 Blade Servers
- C. Four Cisco UCS B200 Blade Servers, one Cisco UCS B250 Blade Server, and two Cisco UCS B440 Blade Servers
- D. Four Cisco UCS B200 Blade Servers, two Cisco UCS B250 Blade Servers, and two Cisco UCS B440 Blade Servers

Answer: A

QUESTION 10

Which type of specialized high-speed network is designed to transfer data from storage device to storage device?

- A. LAN
- B. MAN
- C. SAN
- D. WAN

Answer: C

QUESTION 11

Which three functions are performed with service profiles when the BIOS is upgraded on a Cisco UCS Server? (Choose three.)

- A. Associate the host firmware package to service profile
- B. Disassociate the service profile from the blade or blade pool.
- C. Remove a blade from a blade pool.
- D. Associate the service profile to a blade.
- E. Associate the service profile to a blade pool

Answer: ADE

QUESTION 12

When should an antistatic wrist strap should be worn?

- A. when using the crimping tool with an integrated wire cutter and wire stripper
- B. when inserting a loopback plug into a router interface
- C. when using a flash card reader to copy Cisco IOS images
- D. when installing or uninstalling Cisco devices or electronics

Answer: D

Ensurepass.com Members Features:

1. Verified Answers researched by industry experts.
2. Q&As are downloadable in PDF and VCE format.
3. 98% success Guarantee and **Money Back** Guarantee.
4. Free updates for **180** Days.

View list of All Exam provided:

<http://www.ensurepass.com/certifications?index=A>

To purchase Lifetime Full Access Membership click here:

<http://www.ensurepass.com/user/register>

Valid Discount Code for 2014: SFOH-FZA0-7Q2S

To purchase the HOT Exams:

<u>Cisco</u>		<u>CompTIA</u>		<u>Oracle</u>	<u>VMWare</u>	<u>IBM</u>
<u>100-101</u>	<u>640-554</u>	<u>220-801</u>	<u>LX0-101</u>	<u>1Z0-051</u>	<u>VCAD510</u>	<u>C2170-011</u>
<u>200-120</u>	<u>640-802</u>	<u>220-802</u>	<u>N10-005</u>	<u>1Z0-052</u>	<u>VCP510</u>	<u>C2180-319</u>
<u>300-206</u>	<u>640-816</u>	<u>BR0-002</u>	<u>SG0-001</u>	<u>1Z0-053</u>	<u>VCP550</u>	<u>C4030-670</u>
<u>300-207</u>	<u>640-822</u>	<u>CAS-001</u>	<u>SG1-001</u>	<u>1Z0-060</u>	<u>VCAC510</u>	<u>C4040-221</u>
<u>300-208</u>	<u>640-864</u>	<u>CLO-001</u>	<u>SK0-002</u>	<u>1Z0-474</u>	<u>VCP5-DCV</u>	<u>RedHat</u>
<u>350-018</u>	<u>642-467</u>	<u>ISS-001</u>	<u>SK0-003</u>	<u>1Z0-482</u>	<u>VCP510PSE</u>	<u>EX200</u>
<u>352-001</u>	<u>642-813</u>	<u>JK0-010</u>	<u>SY0-101</u>	<u>1Z0-485</u>		<u>EX300</u>
<u>400-101</u>	<u>642-902</u>	<u>JK0-801</u>	<u>SY0-301</u>	<u>1Z0-580</u>		
<u>640-461</u>	<u>700-302</u>			<u>1Z0-820</u>		

