



Vendor: Cisco

Exam Code: 300-115

**Exam Name: Implementing Cisco IP Switched Networks
(SWITCH v2.0)**

Version: Demo

QUESTION 1

Which option is a Cisco recommended RSPAN configuration practice?

- A. Use a different RSPAN VLAN for each session it configuring RSPAN on multiple switches.
- B. Use only one destination port for each RSPAN session.
- C. Define an RSPAN VLAN before configuring an RSPAN source or destination session.
- D. Assign access ports to an RSPAN VLAN like any other campus VLAN

Correct Answer: C

QUESTION 2

Where should the Root Guard be implemented in the network topology that Cisco recommends? (Choose two.)

- A. All non-root ports of the Access Switches.
- B. Downstream links from Distribution to Access Switches
- C. Access Switches to uplink ports to Distribution Switches
- D. On Layer 3 Switches.

Correct Answer: AB

QUESTION 3

The following command was issued on a router that is being configured as the active HSRP router.

```
standby ip 10.2.1.1
```

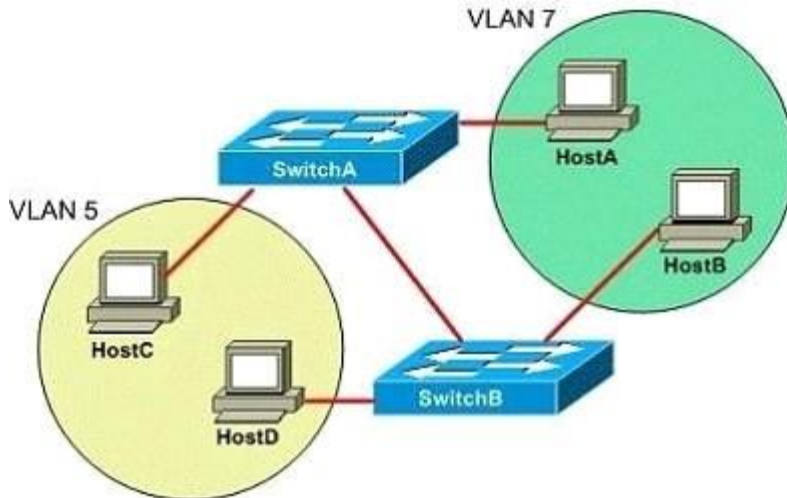
Which statement is true about this command?

- A. This command will not work because the HSRP group information is missing
- B. The HSRP MAC address will be 0000 0c07 ac00
- C. The HSRP MAC address will be 0000 0c07 ac01.
- D. The HSRP MAC address will be 0000.070c ad01.
- E. This command will not work because the active parameter is missing

Correct Answer: B

QUESTION 4

You want to configure a switched internetwork with multiple VLANs as shown above. Which of the following commands should you issue on SwitchA for the port connected to SwitchB? (Select the best answer.)



- A. switchport mode trunk
- B. switchport access vlan 5
- C. switchport mode access vlan 5
- D. switchport trunk native vlan 5

Correct Answer: A

QUESTION 5

You administer a network that uses two routers, R1 and R2, configured as an HSRP group to provide redundancy for the gateway. Router R1 is the active router and has been configured as follows:

```
R1#configure terminal
```

```
R1(config)#interface fa0/0
```

```
R1(config-if)#ip address 10.10.0.5 255.255.255.0
```

```
R1(config-if)#standby 1 priority 150
```

```
R1(config-if)#standby preempt delay minimum 50
```

```
R1(config-if)#standby 1 track interface fa0/2 15
```

```
R1(config-if)#standby 1 ip 10.10.0.20
```

Which of the following describes the effect the "standby preempt delay minimum 50" command will have on router R1? (Select the best answer.)

- A. The HSRP priority for router R1 will increase to 200.
- B. Router R1 will become the standby router if the priority drops below 50.
- C. The HSRP priority for router R1 will decrease to 50 points when Fa0/2 goes down.
- D. Router R1 will wait 50 seconds before attempting to preempt the active router.

Correct Answer: D

QUESTION 6

Behavior of an access port when a tagged packet is received other than the access VLAN value.

- A. Tag is removed and packet is forwarded of the VLAN mentioned in the tag.
- B. tag is removed and packet is forwarded on the VLAN of the access port
- C. Not Available
- D. packet is dropped

Correct Answer: D

QUESTION 7

DRAG DROP

Drag the appropriate terms into specific category.

default STP mode	PVST+
discarding port state	
based on 802.1 w	Rapid PVST+
maps VLANs to instances	
based on IEEE 802.1s	MSTP
based on IEEE 802.1D	

Correct Answer:

default STP mode	PVST+
discarding port state	based on IEEE 802.1s
based on 802.1 w	default STP mode
maps VLANs to instances	Rapid PVST+
based on IEEE 802.1s	based on 802.1 w
based on IEEE 802.1D	discarding port state
	MSTP
	based on IEEE 802.1D
	maps VLANs to instances

QUESTION 8

What happens if an interface within channel group is configured as SPAN destination?

- A. portchannel will forward traffic to source span
- B. will not be operational
- C. the link will be in error-disable
- D. none of the above

Correct Answer: B

QUESTION 9

Which command do you enter so that the default authentication group on a device falls back to the case-sensitive local user database when the initial authentication fails?

- A. aaa authentication login default group tacacs+ radius local
- B. aaa authentication exec default group tacacs+ local if-authenticated
- C. aaa authentication login default group tacacs+ local-case if-authenticated
- D. aaa authentication exec default group tacacs+ if-authenticated local

Correct Answer: C

QUESTION 10

Which two statements about VRRP are true? (Choose two.)

- A. Authentication commands must be entered under the interface.
- B. It sends advertisements to multicast address 224.0.0.9.
- C. It supports MD5 and IPsec authentication.
- D. It can use an interface IP address as the virtual IP address.
- E. It sends advertisements to multicast address 224.0.0.18.
- F. It is a Cisco proprietary protocol

Correct Answer: AE

QUESTION 11

Refer to the exhibit.

****Exhibit is missing****

An engineer is configuring an etherchannel between two switches, he notices the error message on Switch 2 (error message channel-misconfiguring error), based on the output what is the problem:

- A. the etherchannel on the switch 1 using incorrect member port
- B. the etherchannel interface of switch 1 is not configured
- C. the etherchannel protocol on switch 1 is not correct
- D. the etherchannel interface of switch 2 is not configured

Correct Answer: C

QUESTION 12

Based on the show spanning-tree vlan 200 output shown in the exhibit, which two statements about the STP process for VLAN 200 are true? (Choose two.)

```
Switch#show spanning-tree vlan 200
VLAN0200
Spanning tree enabled protocol ieee
Root ID    Priority    32968
           Address    000c.ce29.ef00
           Cost        19
           Port        2 (FastEthernet0/2)
           Hello Time  10 sec    Max Age 20 sec    Forward Delay 30 sec

Bridge ID  Priority    32968 (priority 32768 sys-id-ext 200)
           Address    000c.ce2a.4180
           Hello Time  2 sec     Max Age 20 sec    Forward Delay 15 sec
           Aging Time  300

Interface                Role Sts Cost          Prio.Nbr Type
-----
Fa0/2                    Root FWD 19            128.2   P2p
Fa0/3                    Altn BLK 19            128.3   P2p
```

- A. BPDUs will be sent out every two seconds.
- B. The time spent in the listening state will be 30 seconds.
- C. The time spent in the learning state will be 15 seconds.
- D. The maximum length of time that the BPDU information will be saved is 30 seconds.
- E. This switch is the root bridge for VLAN 200.
- F. BPDUs will be sent out every 10 seconds.

Correct Answer: BF

QUESTION 13

Which statement about Layer 2 protocol participation of ports involved in a SPAN session is true?

- A. Neither a SPAN source nor SPAN destination participates in any Layer 2 protocols.
- B. A SPAN source does not participate in any Layer 2 protocols
- C. A SPAN destination does not participate in any Layer 2 protocols
- D. Both SPAN source and SPAN destination participate in any Layer 2 protocols

Correct Answer: C

QUESTION 14

EtherChannel load balancing with an exhibit.

SERVER SERVER

||

SWITCH

|||||||

SWITCH

|

HOST

Which EtherChannel load balancing algorithm should be used to optimize the EtherChannel links between switches?

- A. Source MAC
- B. Source-dest MAC
- C. Destination IP
- D. Destination MAC

Correct Answer: A

QUESTION 15

Given the configuration on a switch interface, what happens when a host with the MAC address of 0003.0003.0003 is directly connected to the switch port?

```
switchport mode access
```

```
switchport port-security
```

```
switchport port-security maximum 2
```

```
switchport port-security mac-address 0002.0002.0002
```

```
switchport port-security violation shutdown
```

- A. The host will be allowed to connect.
- B. The port will shut down.
- C. The host can only connect through a hub/switch where 0002.0002.0002 is already connected.
- D. The host will be refused access.

Correct Answer: A

QUESTION 16

In regards to Cisco Virtual Switching System, which technology is needed between two switches for them to act as one network element and share control information and data traffic?

- A. virtual port channel
- B. EtherChannel
- C. virtual switch link
- D. trunk

Correct Answer: C

QUESTION 17

Refer to the exhibit. What is the result of setting GLBP weighting at 105 with lower threshold 90 and upper threshold 100 on this router?

```
Router# show glbp FastEthernet0/1 1
FastEthernet0/1 - Group 1
State is Listen
  64 state changes, last state change 00:00:54
Virtual IP address is 10.1.0.7
Hello time 50 msec, hold time 200 msec
  Next hello sent in 0.030 secs
Redirect time 600 sec, forwarder time-out 14400 sec
Authentication text "authword"
Preemption enabled, min delay 0 sec
Active is 10.1.0.2, priority 105 (expires in 0.184 sec)
Standby is 10.1.0.3, priority 100 (expires in 0.176 sec)
Priority 96 (configured)
weighting 105 (configured 105), thresholds: lower 90, upper 100
  Track object 1 state up decrement 10
  Track object 2 state up decrement 10
Load balancing: round-robin
IP redundancy name is "glbp1"
Group members:
  0004.4d83.4801 (10.0.0.0)
  0010.7b5a.fa41 (10.0.0.1)
  00d0.bbd3.bc21 (10.0.0.2) local
```

- A. Only if both tracked objects are up will this router will be available as an AVF for group 1.
- B. Only if the state of both tracked objects goes down will this router release its status as an AVF for group 1.
- C. If both tracked objects go down and then one comes up, but the other remains down, this router will be available as an AVF for group 1.
- D. This configuration is incorrect and will not have any effect on GLBP operation.
- E. If the state of one tracked object goes down then this router will release its status as an AVF for group 1.

Correct Answer: B

QUESTION 18

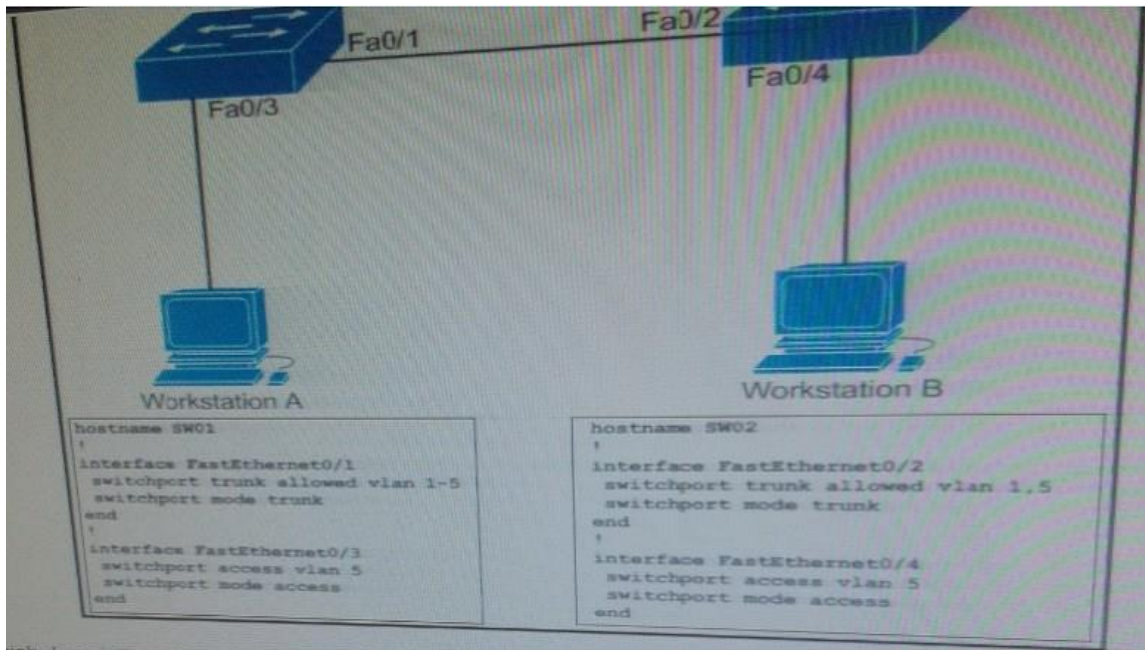
What SPAN configuration is required to enable on a switch?

- A. A monitor VLAN is created for the SPAN traffic.
- B. Configure a source and destination port
- C. Disable VTP pruning on trunk links
- D. None of the above

Correct Answer: B

QUESTION 19

Refer to the exhibit. Which description of the effect of entering the switch port trunk allowed vlan 2,3,4 command on Fast Ethernet 0/2 0 true?



- A. The two workstations continue to communication without a default gateway configured.
- B. The command is unsupported on a trunk where VLANs have already been pruned manually.
- C. The running configuration displays switch port trunk allowed vlan 1-5 for Fa0/2.
- D. The two workstation stop communicating because they are on VLAN 5. Which is not allowed on the trunk.

Correct Answer: A

QUESTION 20

What is the default port security violation?

- A. log
- B. shutdown
- C. no change
- D. error-disable

Correct Answer: B