



# Cisco

## Exam 300-070

### Implementing Cisco IP Telephony & Video, Part 1 v1.0

Version: 10.0

[ Total Questions: 189 ]

### Question No : 1

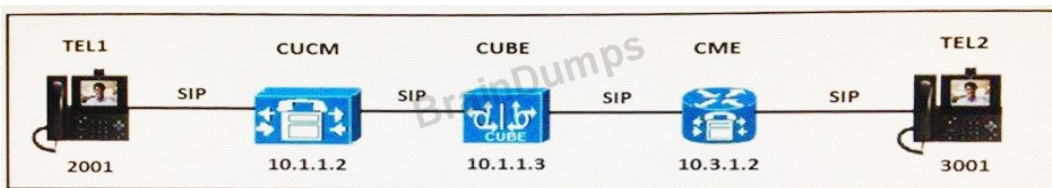
Which three configuration options are currently unsupported when configuring the Cisco Unified Border Element for videoconferencing? (Choose three)

- A. RSVP synchronization of H.323 calls.
- B. Multiple logical channels per call leg.
- C. H.323-to-SIP video traffic.
- D. FECC support.
- E. Video endpoints with different H.245 versions.
- F. Dual video/picture-in-picture.
- G. DSCP marking for video streams.

Answer: C,E,F

### Question No : 2

Refer to Exhibit:



An engineer is working on a ticket that reports TEL1 cannot call TEL2. These dial peers are configured to route the call between the endpoints.

```
dial-peer voice 2001 voip
```

```
destination-pattern 2001
```

```
session protocol sipv2
```

```
session target ipv4:10.1.1.2
```

```
incoming called-number .
```

codec g722-64

video codec h264

dtmf-relay rtp-nte sip-notify sip-kpml

no vad

dial-peer voice 3001 voip

destination-pattern 3001

session protocol sipv2

session target ipv4:10.3.1.2

incoming called-number .

codec g722-64

video codec h264

dtmf-relay rtp-nte sip-notify sip-kpml

no vad

While troubleshooting, the engineer discovers that the Cisco Unified Border Element is giving the error "SIP/2.0 403 Forbidden". Which two Cisco Unified Border Element configurations resolve this issue? (Choose two.)

**A.** voice service voip  
mode border-element  
ip address trusted list  
ipv4 10.1.1.0 255.255.255.0  
ipv4 10.2.1.0 255.255.255.0  
allow-connections sip to sip

sip  
bind control source-interface loopback0  
bind media source-interface loopback0  
**B.** voice service voip  
no ip address trusted authenticate  
mode border-element  
allow-connections sip to sip  
sip  
bind control source-interface loopback0  
bind media source-interface loopback0  
**C.** voice service voip  
mode border-element  
ip address trusted list  
allow-connections sip to sip  
sip  
bind control source-interface loopback0  
bind media source-interface loopback0  
**D.** voice service voip  
mode border-element  
allow-connections sip to sip  
sip  
bind control source-interface loopback0  
bind media source-interface loopback0  
**E.** voice service voip  
mode border-element  
ip address trusted list  
ipv4 10.1.1.0 255.255 255.0  
ipv4 10.3.1.0 255.255.255.0  
allow-connections sip to sip  
sip  
bind control source-interface loopback0  
bind media source-interface loopback0

**Answer: B,E**

### **Question No : 3**

What are three features of Cisco Unified Border Element? (Choose three).

- A. Protocol Interworking.
- B. Bandwidth Control.
- C. Admission Request.
- D. Automated Alternate Routing.

- E. Address Hiding.
- F. Security.
- G. Video Integration.

**Answer: A,F,G**

**Question No : 4**

On Cisco Unified Communications Manager, where can you change the softkey templates from your IP phone?

- A. Cisco Unified Communications Manager Serviceability > Device > Device Settings > Softkey Templates.
- B. Cisco Unified Communications Manager Administration > Device > Device Settings > Softkey Templates.
- C. Cisco Unified Communications Manager Administration > Device > Device Settings > Phone ButtonTemplate.
- D. Cisco Unified Communications Manager Administration > Device > Device Settings > Device Defaults.

**Answer: B**

**Question No : 5**

Which two algorithms are valid to distribute calls in a route group? (Choose two.)

- A.  
broadcast
- B.  
circular
- C.  
top-down
- D.  
bottom-up
- E.  
round-robin

**Answer: B,C**

Reference:

[http://www.cisco.com/c/en/us/td/docs/voice\\_ip\\_comm/cucm/admin/7\\_1\\_2/ccmcfg/bccm-712cm/b03rtgrp.pdf](http://www.cisco.com/c/en/us/td/docs/voice_ip_comm/cucm/admin/7_1_2/ccmcfg/bccm-712cm/b03rtgrp.pdf) (page 2)

**Question No : 6**

Where is a Local Route Group configuration applied?

- A. In each IP phone
- B. In each device pool
- C. In each location
- D. In each region
- E. In each route list

**Answer: B**

**Question No : 7**

Which two statements describe the function of the off-net option in a route pattern?  
(Choose two.)

- A. The off-net option indicates that if a call is not routed through this route pattern, it is considered off the local network, or “off-net”.
- B. This option could be used to block an external call from transferring to an internal party.
- C. This option could be used to block an external call from transferring to an external party.
- D. The off-net option indicates that if a call is routed through this route pattern, it is considered off the local network, or “off-net.”

**Answer: C,D**

**Question No : 8**

Refer to the exhibit.

The image shows two screenshots from the Cisco Unified CM Administration interface. The top screenshot is for 'IP Route Pattern Configuration' and the bottom is for 'Gateway Configuration'.

**IP Route Pattern Configuration**

**Status:** Add successful

**Pattern Definition**

Pattern Usage	Enrutamiento de dirección IP
IPv4 Pattern *	10.200.6.3
IPv6 Pattern	
Description	Monterrey
Route Partition	Interna
SIP Trunk/Route List *	RL-Monterrey

Block Pattern

**Calling Party Transformations**

Use Calling Party's External Phone Mask

Calling Party Transformation Mask:

Prefix Digits (Outgoing Calls):

Calling Line ID Presentation \*

**Gateway Configuration**

**Status:** Status: Ready

**Device Information**

Product	H.323 Gateway
Device Protocol	H.225
Registration	Unknown
IP Address	10.200.6.3
⚠ Device is not trusted	
Device Name *	10.200.6.3
Description	10.200.6.3 Me
Device Pool *	DP-Monterrey
Common Device Configuration	< None >
Call Classification *	OffNet
Media Resource Group List	MRGL-Monter
Packet Capture Mode *	None
Packet Capture Duration	0

A Network Administrator needs to create a SIP route pattern to communicate with Monterrey's Gateway.

The Administrator does not understand why this is not working properly. Which two statements explain the issue and resolve the problem? (Choose two.)

- A. The issue is caused by a failure of communication between the Monterrey's Gateway and CUCM.
- B. The Administrator should type the reload command into Monterrey's Gateway.
- C. The issue is caused by incorrect protocol integration between Monterrey's Gateway and CUCM.
- D. The Administrator needs to set up a SIP trunk between Monterrey's Gateway and CUCM.

**Answer: C,D**

#### **Question No : 9**

A customer is integrating two video solutions between regions using a Cisco Unified Border Element and finds that some of the RTP payloads are not compatible with the Cisco Unified

Border Element configuration. Which two actions does Cisco recommend to solve this issue? (Choose two.)

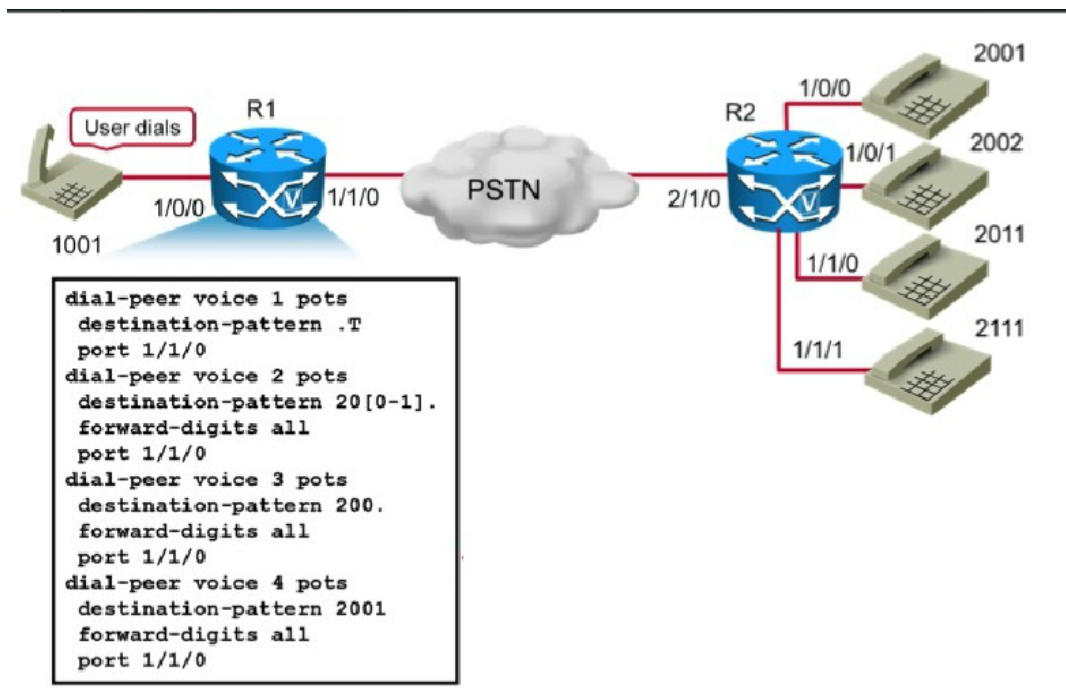
- A.  
Specify the video payload on the voice service.
- B.  
Configure a transparent codec on the dial peers.
- C.  
Configure RTP payload mapping on the dial peers.
- D.  
Configure asymmetric payload on the voice service.
- E.  
Set up a voice class for the video codec.

**Answer: A,C**

#### **Question No : 10**



Refer to Exhibit:



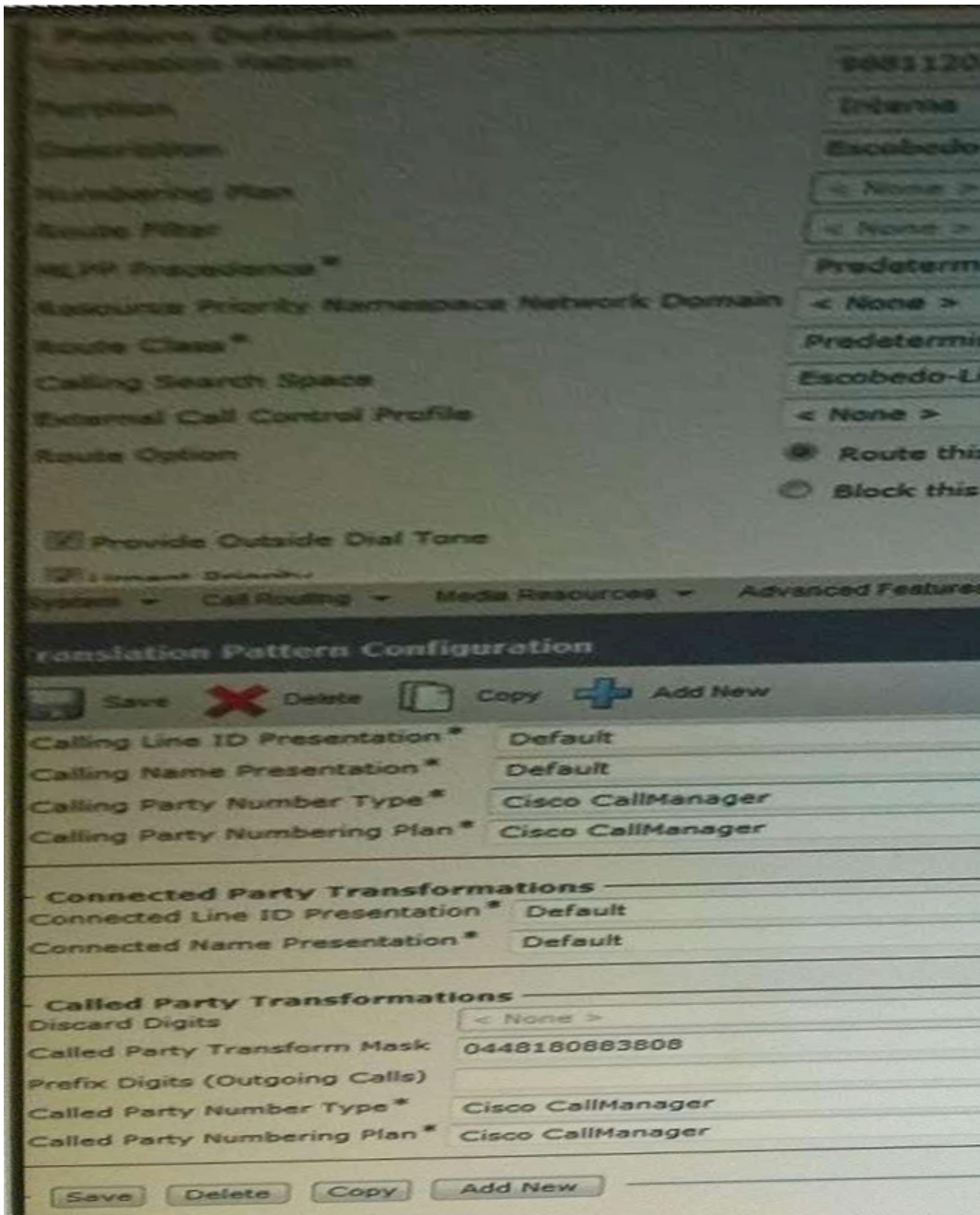
If the user at extension 1001 dials the user at extension 2011, which dial peer is used to route the call?

- A. 3
- B. 2
- C. 4
- D. 1

**Answer: B**

**Question No : 11**

Refer to the exhibit.



ABC Company uses the digit 9 to get a dial tone and type a DN. A user needs to type 8811202 and automatically send the call to a cellphone. The Network Administrator did this configuration, but it is not working.

Which two actions can the Administrator take to solve this problem? (Choose two)

- A. In the Translation Pattern option, delete the digit "8".
- B. In the Translation Pattern option, delete the digit "9".
- C. In the Route Option option, select Block this Pattern.
- D. In the Called Party Transform Mask option, prefix the digit "9".

**Answer: B,D**

**Question No : 12**

Refer to the exhibit.



Which conference resource is Conference 2 using assuming the MRGL has just been reset and all 6 conferences have become active?

- A. SW\_CFB\_3
- B. HW\_CFB\_2
- C. HW\_CFB\_1
- D. SW\_CFB\_2
- E. SW\_CFB\_1

**Answer: B**

**Question No : 13**

What are two characteristics that are associated with the End User and User account types? (Choose two.)

- A. They cannot use LDAP.
- B. They are used to authorize applications.
- C. They can utilize LDAP.
- D. The Application is associated with the End User and User account types.
- E. They can be listed in a directory.

**Answer: C,D**

**Question No : 14**

How are Cisco Unified CallManager location parameters used?

- A. Assign directory numbers to devices as they connect to the IP telephony network.
- B. Specify the bandwidth used for audio and video calls.
- C. Implement call admission control in a centralized call processing deployment.
- D. Provide alternate call routing when the primary call path is unavailable.

**Answer: C**

**Question No : 15**

Which of these determines the Cisco Unified Communications Manager server to which an IP phone registers?

- A. The Cisco Unified Communications Manager group is configured with a Device Pool that designates the primary, secondary, and tertiary servers in the group.
- B. Each IP phone is configured with a Device Pool containing the Cisco Unified Communications Manager group that determines which server the IP phone will use as its primary, secondary, and tertiary server.
- C. Each IP phone is configured with its primary, secondary, and tertiary server.
- D. The Cisco Unified Communications Manager group is configured in the publisher to designate the IP phone groups that will register with the primary, secondary, and tertiary servers in the group.

**Answer: B**

**Question No : 16**

ABC SA de CV is a Company located in New York City and has 3 Branch Offices in Laredo, Bryan, and Houston Texas. The network Administrator has the requirement to configure that all international calls goes out first for Houston Texas, if the GW of Houston goes down then the international call goes out for Bryan Texas and if GW of Bryan goes down, the international call will go out of Laredo Texas. What does the Administrator have

to configure to achieve this requirement?

- A. Configure a Route Pattern selecting all possible gateways.
- B. Configure a Line Group for international calls selecting the first option GW of Houston, then Bryan and finally Laredo. After this he has to configure a Hunt List for international calls selecting the Line Group for international calls and finally create the Hunt Pilot for International calls selecting the Hunt List created for international calls.
- C. Configure a New Partition and New CSS for international calls.
- D. Configure a Route Group for international calls selecting the first option GW of Houston, then Bryan and finally Laredo. After this he has to configure a Route List for international calls selecting the Route Group for international calls and finally create the Route Pattern for International calls selecting the Route List created for international calls.

**Answer: D**

#### **Question No : 17**

After you configure a dial plan to call a particular prefix in the PSTN, you notice that some outbound calls are taking longer than usual (15 seconds) before you hear a connecting tone. What is the likely cause of this issue?

- A. The outbound gateway must be configured with the new prefix.
- B. The endpoint is choosing the best codec to use.
- C. The new prefix is overlapping other route patterns.
- D. With some prefixes, this is normal behavior of the PSTN.

**Answer: C**

#### **Question No : 18**

Which type of dial plan implements destinations by using a format that is similar to email addresses?

- A. H.323.
- B. E.164.
- C. DNS.
- D. URI.

**Answer: D**

**Question No : 19**

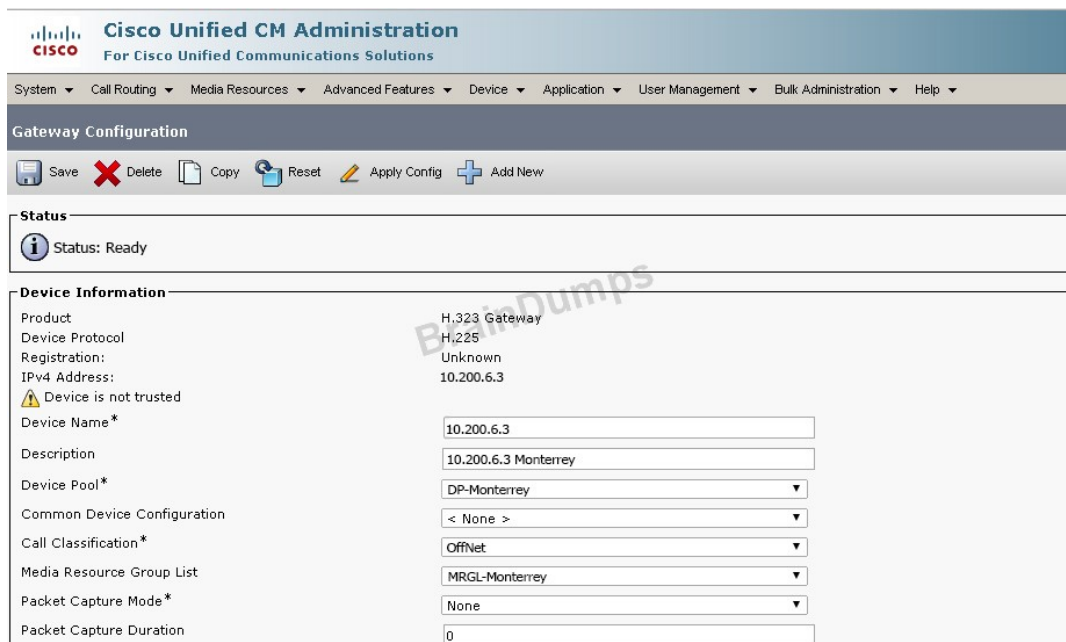
What are two characteristics of a Cisco Unified Communications Manager dial plan?  
(Choose two.)

- A. partitions and calling search spaces
- B. COR
- C. dial peers
- D. voice translation rules
- E. route patterns

**Answer: A,E**

**Question No : 20**

Refer to the exhibit.



The screenshot shows the Cisco Unified CM Administration interface for Gateway Configuration. The status is 'Ready'. Under Device Information, the product is H.323 Gateway, device protocol is H.225, registration is unknown, and the IPv4 address is 10.200.6.3. A warning icon indicates 'Device is not trusted'. The configuration fields are as follows:

Field	Value
Device Name*	10.200.6.3
Description	10.200.6.3 Monterrey
Device Pool*	DP-Monterrey
Common Device Configuration	< None >
Call Classification*	OffNet
Media Resource Group List	MRGL-Monterrey
Packet Capture Mode*	None
Packet Capture Duration	0

A Network Administrator needs to create a SIP route pattern to communicate with Monterrey's Gateway. The Administrator does not understand why this is not working properly. Which two statements explain the issue and resolve the problem? (Choose two.)

**A.**

The Administrator needs to set up a SIP trunk between Monterrey's Gateway and Cisco Unified Communications Manager.

**B.**

The Administrator should type the reload command into Monterrey's Gateway

**C.**

The issue is caused by a failure of communication between the Monterrey's Gateway and Cisco Unified Communications Manager

**D.**

The issue is caused by incorrect protocol integration between Monterrey's Gateway and Cisco Unified Communications Manager.

**Answer: A,D**

### **Question No : 21**

Where do you configure a SIP route pattern?

**A.** Call Routing > Route/Hunt > SIP Route Pattern

**B.** System > SIP Route Pattern

**C.** Call Routing > SIP Route Pattern

**D.** Advanced Features > SIP Route Pattern

**Answer: C**

### **Question No : 22**

Hackers are sending calls through a gateway router that is running SIP. The engineer blocks all

SIP messages to the router except from their SIP server, which has an IP address of

208.177.10.1. The customer also must connect via SIP to their Cisco Expressway server with an

IP address of 10.1.10.110. Which series of commands secures the router from the hackers?

**A.**

```
voice service voip
voip security allow
ipv4 208.177.10.1 255.255.255.255
ipv4 10.1.10.110 255.255.255.255
```

**B.**

```
voice service voip
ip address trusted list
ipv4 208.177.10.1 255.255.255.255
ipv4 10.1.10.110 255.255.255.255
```

**C.**

```
voice service voip
allow-connections sip to sip
ipv4 208.177.10.1 255.255.255.255
ipv4 10.1.10.110 255.255.255.255
```

**D.**

```
voice service voip
address-hiding
ipv4 208.177.10.1 255.255.255.255
ipv4 10.1.10.110 255.255.255.255
```

**Answer: B**

Reference: <http://www.cisco.com/c/en/us/support/docs/voice/call-routing-dial-plans/112083tollfraud-ios.html>

### **Question No : 23**

When comparing SIP H.323 and MGCP, which of the following is specific to SIP?

- A.** The dial plan is directly on the gateway.
- B.** SIP provides support for third-party entities.
- C.** SIP defines Translation per the gateway.
- D.** SIP has a centralized dial plan.

**Answer: B**

### **Question No : 24**



A customer recently installed a Cisco TelePresence MCU 5320. The customer wants a virtual meeting room that restricts participants from communicating before the customer joins the call.

Which feature in the MCU enables this functionality?

- A. Floor and chair control.
- B. Numeric ID.
- C. PIN codes.
- D. Owner.

**Answer: A**

**Question No : 25**

Which three options are types of media resources in CUCM? (Choose three)

- A. Music on hold
- B. H.323 trunk
- C. Media Termination Point
- D. Meet-Me Conference
- E. SIP trunk
- F. Transcoder

**Answer: A,C,F**

**Question No : 26**

The Cisco IP Phone of your company operator is on extension 7000. However, users normally dial 0 to get the operator. Which action sends calls that were made to 0 to the operator?

- A.  
Create a route pattern of 0 and use a called party transform mask of 7XXX.
- B.  
Create a translation pattern for 7000 and a called party transform mask of 0.
- C.  
Create a translation pattern for 0 and a called party transform mask of 7000.
- D.

Create the IP phone overlay feature so the operator's line has 0 and 7000 assigned to it.

E.

Create a translation pattern for 0 and a calling party transform mask of 7000.

**Answer: C**

**Question No : 27**

Which four software based media resources require that the Cisco IP voice media stream Application be activated?

A. MOH.

B. SIP.

C. H.323 Gateways.

D. Annunciator.

E. Gatekeeper.

F. MTP.

G. Audio conferencing.

**Answer: A,D,F,G**

**Question No : 28**

A voice engineer is troubleshooting an issue that involves incoming calls to POTS lines. Which command verifies the digits that are received by voice-port?

A.

debug voip dial-per

B.

debug vtsp session

C.

debug vtsp dsp

D.

debug call treatment

E.

debug voice protocol

**Answer: B**

**Question No : 29**

You are a Voice Engineer at ABC Company. You want to implement a voice translation profile to perform the following manipulation: The incoming DNIS 9876562XXX should be modified to 2XXX. Which four commands are required to configure the translation profile? (Choose four.)

- A. voice translation-rule 1
- B. rule 1 /^ 9876562/ /2/
- C. voice translation-profile incoming-calls
- D. translate called 1
- E. rule 1 /^ 9876562\$/ /2/ type subscriber
- F. translation-profile incoming incoming-calls
- G. translate calling 1
- H. translate called rule 1

**Answer: A,B,C,D**

**Question No : 30**

When a call is attempted during a particular time of day, what determines the partitions where calling devices search?

- A. time schedules
- B. calling periods
- C. dial schedules
- D. time periods

**Answer: A**

**Question No : 31**

Every VoIP endpoint must select one specific codec. Which of these codecs is the mandatory codec?

- A. G.729

- B. G.728
- C. G.722
- D. G.711
- E. H.264

**Answer: D**

**Question No : 32**

What is the best tool to test end verify a dial plan during the implementing phase?

- A. Translator X
- B. CUCM Dialed Number Analyzer.
- C. Real-Time Monitoring Tool.
- D. Cisco Prime Collaboration Tool.

**Answer: B**

**Question No : 33**

What is a VoIP dial peer?

- A. A nonaddressable call endpoint.
- B. A call routing mechanism to send and receive calls based on called or calling digits.
- C. A physical connection for call legs.
- D. A logical connection for call legs.

**Answer: B**

**Question No : 34**

Which three are functions of Cisco Unified Border Element? (Choose three.)

- A. client registration
- B. H.323 and SIP interworking
- C. Lync interworking
- D. transcoding

- E. phone proxy
- F. mobile and remote access

**Answer: B,D,E**

**Question No : 35**

What function does the device pool perform?

- A.**  
It separates user and physical location information.
- B.**  
It sets the default device parameters for all IP phones in the cluster.
- C.**  
It sets the location bandwidth used between different locations.
- D.**  
It provides a single point of configuration for every device in a Cisco Unified Communications Manager cluster.

**Answer: A**

Reference:

[http://www.cisco.com/c/en/us/td/docs/voice\\_ip\\_comm/cucm/admin/7\\_1\\_2/ccmcfg/bccm-712cm/b02devpl.html](http://www.cisco.com/c/en/us/td/docs/voice_ip_comm/cucm/admin/7_1_2/ccmcfg/bccm-712cm/b02devpl.html)

**Question No : 36**

Which Cisco Unified Communications Manager default global conference setting should be changed to ensure fraud prevention?

- A. Advanced Ad Hoc Conference Enabled
- B. Enable Click-to-Conference for Third-Party Applications

- C. Drop Ad Hoc Conference
- D. Block OffNet to OnNet Transfer
- E. MCU Conference Bridge Custom Layout Index

**Answer: C**

**Explanation:**

Cisco Unified Communications Manager Administration provides the clusterwide service parameter, Drop Ad Hoc Conference, to allow the prevention of toll fraud (where an internal conference controller disconnects from the conference while outside callers remain connected). The service parameter settings specify conditions under which an ad hoc conference gets dropped.

Reference:

[http://www.cisco.com/c/en/us/td/docs/voice\\_ip\\_comm/cucm/admin/8\\_6\\_1/ccmsys/accm-861cm/a05confb.html](http://www.cisco.com/c/en/us/td/docs/voice_ip_comm/cucm/admin/8_6_1/ccmsys/accm-861cm/a05confb.html)

**Question No : 37**

Which two elements of a dial plan define the domains that are accessible and are assigned to an endpoint? (Choose two)

- A. Partitions.
- B. Calling Search Spaces.
- C. Route patterns.
- D. Translation patterns.
- E. Call Admission Control.

**Answer: A,B**

**Question No : 38**

Which parameter is required on MCU for ad hoc conferencing?

- A. Media Port reservation
- B. incoming calls to unknown conferences or auto-attendants
- C. DSP reservation for video
- D. MCU type
- E. MCU Conference Bridge SIP Port

**Answer: A**

**Question No : 39**

Which protocol is recommended to be used between Cisco Unified Communications Manager and the voice gateway to simplify the dial plan?

- A. SIP.
- B. SCCP.
- C. H323.
- D. RSVP.
- E. MGCP.

**Answer: E**

**Question No : 40**

Which three commands show the output of an active video call? (Choose three.)

- A. show vrm active\_calls
- B. show call active video brief
- C. show voip rtp connections
- D. show voice call
- E. show voice call summary
- F. show video dsp

**Answer: B,C,E**

**Question No : 41**

Which two types of encoding are available to configure a T1 controller for CAS?

- A. AME.
- B. ESF.
- C. SF.
- D. B8SF.
- E. B8ZS.
- F. AMI.

**Answer: E,F**

**Question No : 42**

Which statement regarding Cisco IP voice media streaming application is correct?

- A. It should be activated on the gateway in cluster that supports the TFTP service.
- B. It should be activated on the gatekeeper in cluster that supports the TFTP service.
- C. It should be activated on the node in cluster that does not support the TFTP service.
- D. It should be activated on the node in cluster that supports the TFTP service.

**Answer: D**

**Question No : 43**

Which route pattern is used when 25911 is dialed from an endpoint with a CSS that can access the required partition?

- A. 25XXX
- B. 2[56]XXX
- C. 2591[12]
- D. 259XX

**Answer: C**

**Question No : 44**

Which three options are components of Media Resources Architecture? (Choose three)



- A. Music on hold.
- B. Media Resource Manager.
- C. Media Resource Group.
- D. Route list.
- E. Route group
- F. Media Resource Group List.

**Answer: B,C,F**

**Question No : 45**

To verify that proper digit manipulation is being applied when using called party transformation patterns, which Cisco IOS command do you use from the router or voice gateway?

- A.  
show voice ccapi inout
- B.  
debug voice ccapi in
- C.  
show voice ccapi
- D.  
show voice ccapi in
- E.  
debug voice ccapi inout
- F.  
debug voice ccapi out
- G.  
show voice ccapi out

**Answer: E**

Reference: <http://www.netcraftsmen.com/called-party-transformation-patterns-example-andvalidation/>

**Question No : 46**

Which discard digits instruction removes the access code from a number before passing the number onto an adjacent system?

- A. PreDot
- B. PreAt
- C. NoDigits
- D. Trailing-#

**Answer: A**

**Question No : 47**

What is the correct order for configuring call routing in Cisco Unified Communications Manager?

- A. gateway and SIP trunk, route group, route pattern, route list
- B. gateway and SIP trunk, route list, route group, route pattern
- C. gateway and SIP trunk, route group, route list, route pattern
- D. route list, gateway and SIP trunk, route group, route pattern

**Answer: C**

**Question No : 48**

Which two codecs are supported by the Cisco Unified Communications Manager software conferencing media resource? (Choose two.)

- A. G.723
- B. G.729
- C. wideband
- D. GSM
- E. G.711

**Answer: C,E**

**Question No : 49**

Which three items have a calling search space? (Choose three.)

- A. transcoder
- B. gateways
- C. phone lines
- D. phones
- E. partitions
- F. AAR groups

**Answer: B,C,D**

Reference: <http://www.cisco.com/c/en/us/support/docs/voice-unified-communications/unifiedcommunications-manager-callmanager/22325-part-css-tn.html>

**Question No : 50**

Which statement about the relationship between gateways and route groups is true?

- A. Each gateway can belong to only one route group and can be listed only once within that route group.
- B. Each gateway can belong to only one route group and can be listed multiple times within that route group.
- C. Each gateway can belong to multiple route groups and can be listed only once within each route group.
- D. Each gateway can belong to multiple route groups and can be listed multiple times within each route group.

**Answer: C**

**Question No : 51**

Which three options are valid SIP URI formats? (Choose three.)

- A. jsmith@cisco.com
- B. tel:98765@cisco.com
- C. phone:98765@cisco.com
- D. sip:12345@10.10.10.10:5060;user=phone
- E. sip:bob.cisco.com

**Answer: A,B,D**

**Question No : 52**

What is a route list?

- A. a list of locations
- B. an ordered list of regions
- C. a list of route patterns
- D. an ordered list of gateways and trunks
- E. an ordered list of route groups

**Answer: E**

**Question No : 53**

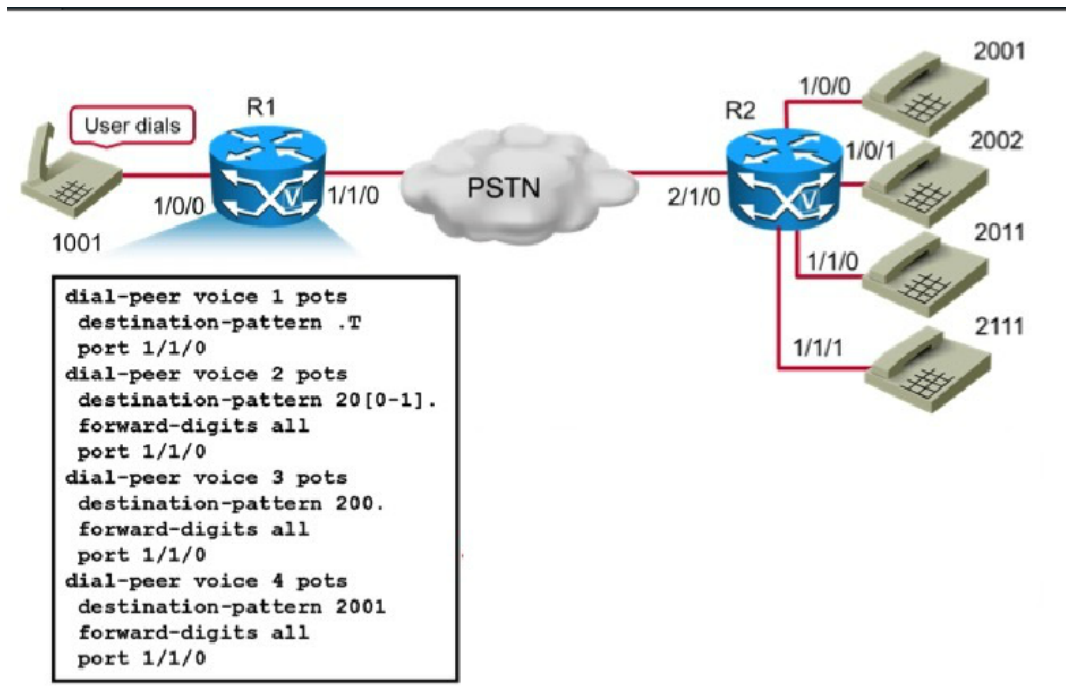
Which distribution algorithm is used for a route group?

- A. Circular, top down.
- B. Longest idle, broadcast.
- C. Circular, top down, longest idle, broadcast.
- D. Top down, broadcast, circular.

**Answer: A**

**Question No : 54**

Refer to Exhibit:



If the user at extension 1001 dials the user at extension 2002, which dial peer is used to route the call?

- A. 3
- B. 2
- C. 4
- D. 1

Answer: A

**Question No : 55**

You are performing route pattern configuration. You need to ensure that internal extensions are automatically expanded to full external phone numbers for calling line information on outgoing calls. What should you use?

- A. calling extension expansion
- B. called number expansion
- C. external number mask of the called party
- D. external phone number mask of the calling party

Answer: D

**Question No : 56**

Which of these methods can be used to implement toll-fraud prevention?

- A. drop conferences when only two attendees remain
- B. block on-net to on-net calls
- C. deploy conferencing resources to only those employees that require the service
- D. drop conferences when no on-net party remains

**Answer: D**

**Question No : 57**

Managers have asked to be able to have an extension call them back if it is busy when they try to call it. In what two places can this feature be assigned to the Managers phone? (Choose two.)

- A. Device Settings > Softkey Template
- B. Device Settings > Default Device Profile Configuration
- C. Device Settings > Phone Button Template
- D. Device Settings > Device Profile
- E. Device Settings > Device Defaults
- F. Device Settings > Firmware Load Information

**Answer: A,D**

**Question No : 58**

A customer recently installed a Cisco TelePresence MCU 5320. The customer wants a virtual meeting room that restricts participants from communicating before the customer joins the call.

Which feature in the MCU enables this functionality?

- A.  
numeric ID

- B.  
floor and chair control
- C.  
owner
- D.  
PIN codes

**Answer: B**

**Question No : 59**

When creating a route pattern, which two of these options should you avoid? (Choose two)

- A. Lowercase characters, such as a, b, c
- B. Wildcards.
- C. Numbers.
- D. Uppercase characters, such as A, B, C.
- E. Spaces.
- F. Special characters and escape sequences, such as @ and \+.

**Answer: A,E**

**Question No : 60**

By default, what value is voice traffic marked as on a Cisco Catalyst Switch?

- A. DSCP EF value 46, Cos 5.
- B. DSCP EF value 46, Cos 7.
- C. DSCP CAS6 value 21, Cos 3.
- D. DSCP AF21, Cos 5.

**Answer: A**

**Question No : 61**

A phone is assigned to a partition that is included in the CSS HQ-Phone. This partition contains a route pattern to block calls to service numbers 1-400-xxx-xxxx. When the

### Microsoft Exams List

<a href="#">70-246 Dump PDF VCE</a>	<a href="#">70-485 Dump PDF VCE</a>	<a href="#">70-742 Dump PDF VCE</a>	<a href="#">98-366 Dump PDF VCE</a>
<a href="#">70-247 Dump PDF VCE</a>	<a href="#">70-486 Dump PDF VCE</a>	<a href="#">70-743 Dump PDF VCE</a>	<a href="#">98-367 Dump PDF VCE</a>
<a href="#">70-331 Dump PDF VCE</a>	<a href="#">70-487 Dump PDF VCE</a>	<a href="#">70-744 Dump PDF VCE</a>	<a href="#">98-368 Dump PDF VCE</a>
<a href="#">70-332 Dump PDF VCE</a>	<a href="#">70-488 Dump PDF VCE</a>	<a href="#">70-761 Dump PDF VCE</a>	<a href="#">98-369 Dump PDF VCE</a>
<a href="#">70-333 Dump PDF VCE</a>	<a href="#">70-489 Dump PDF VCE</a>	<a href="#">70-762 Dump PDF VCE</a>	<a href="#">98-372 Dump PDF VCE</a>
<a href="#">70-334 Dump PDF VCE</a>	<a href="#">70-490 Dump PDF VCE</a>	<a href="#">70-765 Dump PDF VCE</a>	<a href="#">98-373 Dump PDF VCE</a>
<a href="#">70-339 Dump PDF VCE</a>	<a href="#">70-491 Dump PDF VCE</a>	<a href="#">70-768 Dump PDF VCE</a>	<a href="#">98-374 Dump PDF VCE</a>
<a href="#">70-341 Dump PDF VCE</a>	<a href="#">70-492 Dump PDF VCE</a>	<a href="#">70-980 Dump PDF VCE</a>	<a href="#">98-375 Dump PDF VCE</a>
<a href="#">70-342 Dump PDF VCE</a>	<a href="#">70-494 Dump PDF VCE</a>	<a href="#">70-981 Dump PDF VCE</a>	<a href="#">98-379 Dump PDF VCE</a>
<a href="#">70-345 Dump PDF VCE</a>	<a href="#">70-496 Dump PDF VCE</a>	<a href="#">70-982 Dump PDF VCE</a>	<a href="#">MB2-700 Dump PDF VCE</a>
<a href="#">70-346 Dump PDF VCE</a>	<a href="#">70-497 Dump PDF VCE</a>	<a href="#">74-343 Dump PDF VCE</a>	<a href="#">MB2-701 Dump PDF VCE</a>
<a href="#">70-347 Dump PDF VCE</a>	<a href="#">70-498 Dump PDF VCE</a>	<a href="#">74-344 Dump PDF VCE</a>	<a href="#">MB2-702 Dump PDF VCE</a>
<a href="#">70-348 Dump PDF VCE</a>	<a href="#">70-499 Dump PDF VCE</a>	<a href="#">74-409 Dump PDF VCE</a>	<a href="#">MB2-703 Dump PDF VCE</a>
<a href="#">70-354 Dump PDF VCE</a>	<a href="#">70-517 Dump PDF VCE</a>	<a href="#">74-678 Dump PDF VCE</a>	<a href="#">MB2-704 Dump PDF VCE</a>
<a href="#">70-383 Dump PDF VCE</a>	<a href="#">70-532 Dump PDF VCE</a>	<a href="#">74-697 Dump PDF VCE</a>	<a href="#">MB2-707 Dump PDF VCE</a>
<a href="#">70-384 Dump PDF VCE</a>	<a href="#">70-533 Dump PDF VCE</a>	<a href="#">77-420 Dump PDF VCE</a>	<a href="#">MB2-710 Dump PDF VCE</a>
<a href="#">70-385 Dump PDF VCE</a>	<a href="#">70-534 Dump PDF VCE</a>	<a href="#">77-427 Dump PDF VCE</a>	<a href="#">MB2-711 Dump PDF VCE</a>
<a href="#">70-410 Dump PDF VCE</a>	<a href="#">70-640 Dump PDF VCE</a>	<a href="#">77-600 Dump PDF VCE</a>	<a href="#">MB2-712 Dump PDF VCE</a>
<a href="#">70-411 Dump PDF VCE</a>	<a href="#">70-642 Dump PDF VCE</a>	<a href="#">77-601 Dump PDF VCE</a>	<a href="#">MB2-713 Dump PDF VCE</a>
<a href="#">70-412 Dump PDF VCE</a>	<a href="#">70-646 Dump PDF VCE</a>	<a href="#">77-602 Dump PDF VCE</a>	<a href="#">MB2-714 Dump PDF VCE</a>
<a href="#">70-413 Dump PDF VCE</a>	<a href="#">70-673 Dump PDF VCE</a>	<a href="#">77-603 Dump PDF VCE</a>	<a href="#">MB2-715 Dump PDF VCE</a>
<a href="#">70-414 Dump PDF VCE</a>	<a href="#">70-680 Dump PDF VCE</a>	<a href="#">77-604 Dump PDF VCE</a>	<a href="#">MB2-716 Dump PDF VCE</a>
<a href="#">70-417 Dump PDF VCE</a>	<a href="#">70-681 Dump PDF VCE</a>	<a href="#">77-605 Dump PDF VCE</a>	<a href="#">MB2-717 Dump PDF VCE</a>
<a href="#">70-461 Dump PDF VCE</a>	<a href="#">70-682 Dump PDF VCE</a>	<a href="#">77-881 Dump PDF VCE</a>	<a href="#">MB2-718 Dump PDF VCE</a>
<a href="#">70-462 Dump PDF VCE</a>	<a href="#">70-684 Dump PDF VCE</a>	<a href="#">77-882 Dump PDF VCE</a>	<a href="#">MB5-705 Dump PDF VCE</a>
<a href="#">70-463 Dump PDF VCE</a>	<a href="#">70-685 Dump PDF VCE</a>	<a href="#">77-883 Dump PDF VCE</a>	<a href="#">MB6-700 Dump PDF VCE</a>
<a href="#">70-464 Dump PDF VCE</a>	<a href="#">70-686 Dump PDF VCE</a>	<a href="#">77-884 Dump PDF VCE</a>	<a href="#">MB6-701 Dump PDF VCE</a>
<a href="#">70-465 Dump PDF VCE</a>	<a href="#">70-687 Dump PDF VCE</a>	<a href="#">77-885 Dump PDF VCE</a>	<a href="#">MB6-702 Dump PDF VCE</a>
<a href="#">70-466 Dump PDF VCE</a>	<a href="#">70-688 Dump PDF VCE</a>	<a href="#">77-886 Dump PDF VCE</a>	<a href="#">MB6-703 Dump PDF VCE</a>
<a href="#">70-467 Dump PDF VCE</a>	<a href="#">70-689 Dump PDF VCE</a>	<a href="#">77-887 Dump PDF VCE</a>	<a href="#">MB6-704 Dump PDF VCE</a>
<a href="#">70-469 Dump PDF VCE</a>	<a href="#">70-692 Dump PDF VCE</a>	<a href="#">77-888 Dump PDF VCE</a>	<a href="#">MB6-705 Dump PDF VCE</a>
<a href="#">70-470 Dump PDF VCE</a>	<a href="#">70-695 Dump PDF VCE</a>	<a href="#">77-891 Dump PDF VCE</a>	<a href="#">MB6-884 Dump PDF VCE</a>
<a href="#">70-473 Dump PDF VCE</a>	<a href="#">70-696 Dump PDF VCE</a>	<a href="#">98-349 Dump PDF VCE</a>	<a href="#">MB6-885 Dump PDF VCE</a>
<a href="#">70-480 Dump PDF VCE</a>	<a href="#">70-697 Dump PDF VCE</a>	<a href="#">98-361 Dump PDF VCE</a>	<a href="#">MB6-886 Dump PDF VCE</a>
<a href="#">70-481 Dump PDF VCE</a>	<a href="#">70-698 Dump PDF VCE</a>	<a href="#">98-362 Dump PDF VCE</a>	<a href="#">MB6-889 Dump PDF VCE</a>
<a href="#">70-482 Dump PDF VCE</a>	<a href="#">70-734 Dump PDF VCE</a>	<a href="#">98-363 Dump PDF VCE</a>	<a href="#">MB6-890 Dump PDF VCE</a>
<a href="#">70-483 Dump PDF VCE</a>	<a href="#">70-740 Dump PDF VCE</a>	<a href="#">98-364 Dump PDF VCE</a>	<a href="#">MB6-892 Dump PDF VCE</a>
<a href="#">70-484 Dump PDF VCE</a>	<a href="#">70-741 Dump PDF VCE</a>	<a href="#">98-365 Dump PDF VCE</a>	<a href="#">MB6-893 Dump PDF VCE</a>



### Cisco Exams List

<a href="#">010-151 Dump PDF VCE</a>	<a href="#">350-018 Dump PDF VCE</a>	<a href="#">642-737 Dump PDF VCE</a>	<a href="#">650-667 Dump PDF VCE</a>
<a href="#">100-105 Dump PDF VCE</a>	<a href="#">352-001 Dump PDF VCE</a>	<a href="#">642-742 Dump PDF VCE</a>	<a href="#">650-669 Dump PDF VCE</a>
<a href="#">200-001 Dump PDF VCE</a>	<a href="#">400-051 Dump PDF VCE</a>	<a href="#">642-883 Dump PDF VCE</a>	<a href="#">650-752 Dump PDF VCE</a>
<a href="#">200-105 Dump PDF VCE</a>	<a href="#">400-101 Dump PDF VCE</a>	<a href="#">642-885 Dump PDF VCE</a>	<a href="#">650-756 Dump PDF VCE</a>
<a href="#">200-120 Dump PDF VCE</a>	<a href="#">400-151 Dump PDF VCE</a>	<a href="#">642-887 Dump PDF VCE</a>	<a href="#">650-968 Dump PDF VCE</a>
<a href="#">200-125 Dump PDF VCE</a>	<a href="#">400-201 Dump PDF VCE</a>	<a href="#">642-889 Dump PDF VCE</a>	<a href="#">700-001 Dump PDF VCE</a>
<a href="#">200-150 Dump PDF VCE</a>	<a href="#">400-251 Dump PDF VCE</a>	<a href="#">642-980 Dump PDF VCE</a>	<a href="#">700-037 Dump PDF VCE</a>
<a href="#">200-155 Dump PDF VCE</a>	<a href="#">400-351 Dump PDF VCE</a>	<a href="#">642-996 Dump PDF VCE</a>	<a href="#">700-038 Dump PDF VCE</a>
<a href="#">200-310 Dump PDF VCE</a>	<a href="#">500-006 Dump PDF VCE</a>	<a href="#">642-997 Dump PDF VCE</a>	<a href="#">700-039 Dump PDF VCE</a>
<a href="#">200-355 Dump PDF VCE</a>	<a href="#">500-007 Dump PDF VCE</a>	<a href="#">642-998 Dump PDF VCE</a>	<a href="#">700-101 Dump PDF VCE</a>
<a href="#">200-401 Dump PDF VCE</a>	<a href="#">500-051 Dump PDF VCE</a>	<a href="#">642-999 Dump PDF VCE</a>	<a href="#">700-104 Dump PDF VCE</a>
<a href="#">200-601 Dump PDF VCE</a>	<a href="#">500-052 Dump PDF VCE</a>	<a href="#">644-066 Dump PDF VCE</a>	<a href="#">700-201 Dump PDF VCE</a>
<a href="#">210-060 Dump PDF VCE</a>	<a href="#">500-170 Dump PDF VCE</a>	<a href="#">644-068 Dump PDF VCE</a>	<a href="#">700-205 Dump PDF VCE</a>
<a href="#">210-065 Dump PDF VCE</a>	<a href="#">500-201 Dump PDF VCE</a>	<a href="#">644-906 Dump PDF VCE</a>	<a href="#">700-260 Dump PDF VCE</a>
<a href="#">210-250 Dump PDF VCE</a>	<a href="#">500-202 Dump PDF VCE</a>	<a href="#">646-048 Dump PDF VCE</a>	<a href="#">700-270 Dump PDF VCE</a>
<a href="#">210-255 Dump PDF VCE</a>	<a href="#">500-254 Dump PDF VCE</a>	<a href="#">646-365 Dump PDF VCE</a>	<a href="#">700-280 Dump PDF VCE</a>
<a href="#">210-260 Dump PDF VCE</a>	<a href="#">500-258 Dump PDF VCE</a>	<a href="#">646-580 Dump PDF VCE</a>	<a href="#">700-281 Dump PDF VCE</a>
<a href="#">210-451 Dump PDF VCE</a>	<a href="#">500-260 Dump PDF VCE</a>	<a href="#">646-671 Dump PDF VCE</a>	<a href="#">700-295 Dump PDF VCE</a>
<a href="#">210-455 Dump PDF VCE</a>	<a href="#">500-265 Dump PDF VCE</a>	<a href="#">646-985 Dump PDF VCE</a>	<a href="#">700-501 Dump PDF VCE</a>
<a href="#">300-070 Dump PDF VCE</a>	<a href="#">500-275 Dump PDF VCE</a>	<a href="#">648-232 Dump PDF VCE</a>	<a href="#">700-505 Dump PDF VCE</a>
<a href="#">300-075 Dump PDF VCE</a>	<a href="#">500-280 Dump PDF VCE</a>	<a href="#">648-238 Dump PDF VCE</a>	<a href="#">700-601 Dump PDF VCE</a>
<a href="#">300-080 Dump PDF VCE</a>	<a href="#">500-285 Dump PDF VCE</a>	<a href="#">648-244 Dump PDF VCE</a>	<a href="#">700-602 Dump PDF VCE</a>
<a href="#">300-085 Dump PDF VCE</a>	<a href="#">500-290 Dump PDF VCE</a>	<a href="#">648-247 Dump PDF VCE</a>	<a href="#">700-603 Dump PDF VCE</a>
<a href="#">300-101 Dump PDF VCE</a>	<a href="#">500-801 Dump PDF VCE</a>	<a href="#">648-375 Dump PDF VCE</a>	<a href="#">700-701 Dump PDF VCE</a>
<a href="#">300-115 Dump PDF VCE</a>	<a href="#">600-199 Dump PDF VCE</a>	<a href="#">648-385 Dump PDF VCE</a>	<a href="#">700-702 Dump PDF VCE</a>
<a href="#">300-135 Dump PDF VCE</a>	<a href="#">600-210 Dump PDF VCE</a>	<a href="#">650-032 Dump PDF VCE</a>	<a href="#">700-703 Dump PDF VCE</a>
<a href="#">300-160 Dump PDF VCE</a>	<a href="#">600-211 Dump PDF VCE</a>	<a href="#">650-042 Dump PDF VCE</a>	<a href="#">700-801 Dump PDF VCE</a>
<a href="#">300-165 Dump PDF VCE</a>	<a href="#">600-212 Dump PDF VCE</a>	<a href="#">650-059 Dump PDF VCE</a>	<a href="#">700-802 Dump PDF VCE</a>
<a href="#">300-180 Dump PDF VCE</a>	<a href="#">600-455 Dump PDF VCE</a>	<a href="#">650-082 Dump PDF VCE</a>	<a href="#">700-803 Dump PDF VCE</a>
<a href="#">300-206 Dump PDF VCE</a>	<a href="#">600-460 Dump PDF VCE</a>	<a href="#">650-127 Dump PDF VCE</a>	<a href="#">810-403 Dump PDF VCE</a>
<a href="#">300-207 Dump PDF VCE</a>	<a href="#">600-501 Dump PDF VCE</a>	<a href="#">650-128 Dump PDF VCE</a>	<a href="#">820-424 Dump PDF VCE</a>
<a href="#">300-208 Dump PDF VCE</a>	<a href="#">600-502 Dump PDF VCE</a>	<a href="#">650-148 Dump PDF VCE</a>	<a href="#">840-425 Dump PDF VCE</a>
<a href="#">300-209 Dump PDF VCE</a>	<a href="#">600-503 Dump PDF VCE</a>	<a href="#">650-159 Dump PDF VCE</a>	
<a href="#">300-210 Dump PDF VCE</a>	<a href="#">600-504 Dump PDF VCE</a>	<a href="#">650-281 Dump PDF VCE</a>	
<a href="#">300-320 Dump PDF VCE</a>	<a href="#">640-692 Dump PDF VCE</a>	<a href="#">650-393 Dump PDF VCE</a>	
<a href="#">300-360 Dump PDF VCE</a>	<a href="#">640-875 Dump PDF VCE</a>	<a href="#">650-472 Dump PDF VCE</a>	
<a href="#">300-365 Dump PDF VCE</a>	<a href="#">640-878 Dump PDF VCE</a>	<a href="#">650-474 Dump PDF VCE</a>	
<a href="#">300-370 Dump PDF VCE</a>	<a href="#">640-911 Dump PDF VCE</a>	<a href="#">650-575 Dump PDF VCE</a>	
<a href="#">300-375 Dump PDF VCE</a>	<a href="#">640-916 Dump PDF VCE</a>	<a href="#">650-621 Dump PDF VCE</a>	
<a href="#">300-465 Dump PDF VCE</a>	<a href="#">642-035 Dump PDF VCE</a>	<a href="#">650-663 Dump PDF VCE</a>	
<a href="#">300-470 Dump PDF VCE</a>	<a href="#">642-732 Dump PDF VCE</a>	<a href="#">650-665 Dump PDF VCE</a>	
<a href="#">300-475 Dump PDF VCE</a>	<a href="#">642-747 Dump PDF VCE</a>	<a href="#">650-754 Dump PDF VCE</a>	

## HOT EXAMS

### Cisco

[100-105 Dumps VCE PDF](#)  
[200-105 Dumps VCE PDF](#)  
[300-101 Dumps VCE PDF](#)  
[300-115 Dumps VCE PDF](#)  
[300-135 Dumps VCE PDF](#)  
[300-320 Dumps VCE PDF](#)  
[400-101 Dumps VCE PDF](#)  
[640-911 Dumps VCE PDF](#)  
[640-916 Dumps VCE PDF](#)

### Microsoft

[70-410 Dumps VCE PDF](#)  
[70-411 Dumps VCE PDF](#)  
[70-412 Dumps VCE PDF](#)  
[70-413 Dumps VCE PDF](#)  
[70-414 Dumps VCE PDF](#)  
[70-417 Dumps VCE PDF](#)  
[70-461 Dumps VCE PDF](#)  
[70-462 Dumps VCE PDF](#)  
[70-463 Dumps VCE PDF](#)  
[70-464 Dumps VCE PDF](#)  
[70-465 Dumps VCE PDF](#)  
[70-480 Dumps VCE PDF](#)  
[70-483 Dumps VCE PDF](#)  
[70-486 Dumps VCE PDF](#)  
[70-487 Dumps VCE PDF](#)

### CompTIA

[220-901 Dumps VCE PDF](#)  
[220-902 Dumps VCE PDF](#)  
[N10-006 Dumps VCE PDF](#)  
[SY0-401 Dumps VCE PDF](#)