

[Download Full Version MS-600 Exam Dumps\(Updated in Feb/2023\)](#)

Actions	Answer Area
Upload a certificate for the application registration of the backend web service.	1
Modify the manifest that defines the application roles and set Allowed Member Types to Apps .	2
Modify the manifest that defines the application roles and set Allowed Member Types to Users .	3
Create a new client secret in the application registration of the backend web service.	
Verify for the role claims in the backend web service.	
Assign the roles to the Azure AD group that contains the users who are mapped to the roles.	

Correct Answer:

Actions	Answer Area
Upload a certificate for the application registration of the backend web service.	1 Create a new client secret in the application registration of the backend web service.
Modify the manifest that defines the application roles and set Allowed Member Types to Apps .	2 Verify for the role claims in the backend web service.
Modify the manifest that defines the application roles and set Allowed Member Types to Users .	3 Assign the roles to the Azure AD group that contains the users who are mapped to the roles.

QUESTION 4

What are two possible URIs that you can use to configure the content administration user interface? Each correct answer present a complete solution. NOTE: Each correct selection is worth one point.

<code>https://login.microsoftonline.com/common/adminconsent?client_id={clientid}</code>
<code>https://login.microsoftonline.com/{tenant}/oauth2/v2.0/token/authorize?client_id={clientid}&state={state}&redirect_uri={url}</code>
<code>https://login.microsoftonline.com/{tenant}/oauth2/v2.0/authorize?client_id={clientid}&state={state}&redirect_uri={url}</code>
<code>https://login.microsoftonline.com/{domain}/adminconsent?client_id={clientid}&state={state}&redirect_uri={url}</code>

- A. Option A
- B. Option B
- C. Option C
- D. Option D

Correct Answer: BC

QUESTION 5

Which type of authentication flow should you recommend for the planned integration with Office 365?

- A. device code
- B. implicit grant
- C. authorization code

[Download Full Version MS-600 Exam Dumps\(Updated in Feb/2023\)](#)

D. client credentials

Correct Answer: C

Explanation:

To use Microsoft Graph to read and write resources on behalf of a user, your app must get an access token from the Microsoft identity platform and attach the token to requests that it sends to Microsoft Graph.

One common flow used by native and mobile apps and also by some Web apps is the OAuth 2.0 authorization code grant flow.

Scenario: Email the generated invoices to customers on behalf of the current signed-in user. Any emails generated by the system will contain the invoiceid.

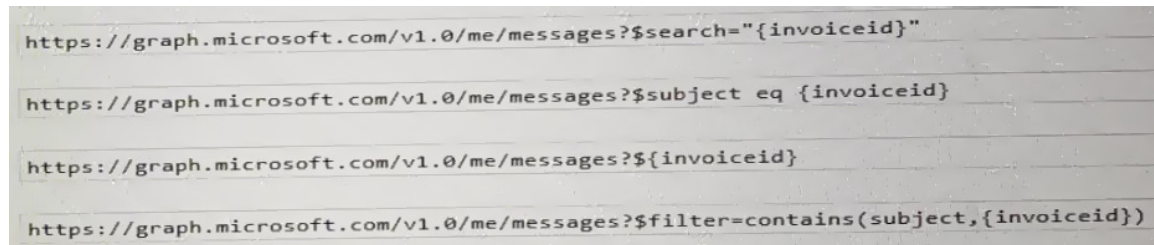
Use Azure AD to manage identities, authentication, and authorization.

Reference:

<https://docs.microsoft.com/en-us/graph/auth-v2-user>

QUESTION 6

Which URI should you use to query all the emails that relate to an invoice?



- A. Option A
- B. Option B
- C. Option C
- D. Option D

Correct Answer: A

QUESTION 7

You need to configure the initial login request in the access token JavaScript script. Which code segment should you insert at line 01?

- A. `const scopes = ['https://graph.microsoft.com/.default'];`
- B. `const accessTokenRequest = {`
`};`
- C. `const scopes = ['https://graph.microsoft.com/Files.Read.All',`
`'https://graph.microsoft.com/Mail.Send.All'];`
- D. `const accessTokenRequest = {`
`scopes: ['https://graph.microsoft.com/Files.ReadWrite',`
`'https://graph.microsoft.com/Mail.Send']`
`};`

Correct Answer: D

Explanation:

Scenario: ADatum identifies the following technical requirements for the planned E-invoicing

[MS-600 Exam Dumps](#) [MS-600 PDF Dumps](#) [MS-600 VCE Dumps](#) [MS-600 Q&As](#)

<https://www.ensurepass.com/MS-600.html>

[Download Full Version MS-600 Exam Dumps\(Updated in Feb/2023\)](#)

capabilities:

Ensure that all operations performed by E-invoicing against Office 365 are initiated by a user. Require that the user authorize E-invoicing to access the Office 365 data the first time the application attempts to access Office 365 data on the user's behalf.

Reference:

<https://docs.microsoft.com/en-us/graph/permissions-reference>

QUESTION 8

How can you validate that the JSON notification message is sent from the Microsoft Graph service?

- A. The ClientState must match the value provided when subscribing.
- B. The user_guid must map to a user ID in the Azure AD tenant of the customer.
- C. The tenant ID must match the tenant ID of the customer's Office 365 tenant.
- D. The subscription ID must match the Azure subscription used by ADatum.

Correct Answer: A

Explanation:

clientState specifies the value of the clientState property sent by the service in each notification. The maximum length is 128 characters. The client can check that the notification came from the service by comparing the value of the clientState property sent with the subscription with the value of the clientState property received with each notification.

Note:

A subscription allows a client app to receive notifications about changes to data in Microsoft Graph.

Reference:

<https://docs.microsoft.com/en-us/graph/api/resources/subscription>

Topic 2, Mix Questions

QUESTION 1

HOTSPOT

You plan to create a Microsoft Teams application that uses action-based messaging extensions.

For each of the following statements, select Yes if the statement is true. Otherwise, select No.

NOTE: Each correct selection is worth one point.

Answer Area	Statements	Yes	No
	A Teams application can have multiple action-based messaging extensions.	<input type="radio"/>	<input type="radio"/>
	Action-based messaging extensions can contain unlimited commands.	<input type="radio"/>	<input type="radio"/>
	Action-based messaging extensions can use the Bot Framework to collect information from users.	<input type="radio"/>	<input type="radio"/>

Correct Answer:

Answer Area	Statements	Yes	No
	A Teams application can have multiple action-based messaging extensions.	<input type="radio"/>	<input checked="" type="radio"/>
	Action-based messaging extensions can contain unlimited commands.	<input type="radio"/>	<input checked="" type="radio"/>
	Action-based messaging extensions can use the Bot Framework to collect information from users.	<input checked="" type="radio"/>	<input type="radio"/>

QUESTION 2

You have an application that uses the Microsoft graph API.

When users open the application during peak hours, they occasionally receive an HTTP 429 Too Many requests response status code.

What should you to mitigate the errors?

- A. Adjust the request rate based on the Rate-Limit-Reset Header.
- B. Wait 100 milliseconds between requests.
- C. Adjust the request rate based on the Retry-After header.
- D. None of the above

Correct Answer: C

QUESTION 3

DRAG DROP

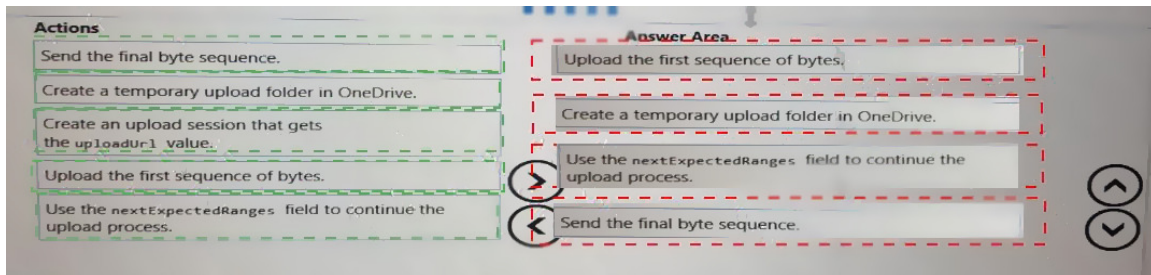
You are developing an application that will upload files that are larger than 50 MB to Microsoft OneDrive.

You need to recommend an upload solution to ensure that the file upload process can resume if a network error occurs during the upload.

Which four actions should you perform in sequence? To answer, move the actions from the list of actions to the answer area and arrange them in the correct order.

Actions	Answer Area
Send the final byte sequence.	
Create a temporary upload folder in OneDrive.	
Create an upload session that gets the uploadUrl value.	
Upload the first sequence of bytes.	
Use the nextExpectedRanges field to continue the upload process.	

Correct Answer:



QUESTION 4

You have a SharePoint Framework (SPFx) web part that displays the weather. Users can set the city within the web part. Which component is invoked to provide the users with the ability to configure the settings for the web part?

- A. a custom control
- B. the property pane
- C. the Application Customizer
- D. a library component

Correct Answer: B

QUESTION 5

HOTSPOT

You receive the following JSON document when you use Microsoft Graph to query the current signed-in user.

```
{
  "@odata.context": "https://graph.microsoft.com/v1.0/$metadata#users/$entity",
  "businessPhones": [
    "+1 555 444 222"
  ],
  "displayName": "BenSmith",
  "givenName": "Ben",
  "jobTitle": "Developer",
  "mail": "ben.smith@contoso.com",
  "mobilePhone": "+1 555 444 222",
  "officeLocation": null,
  "preferredLanguage": null,
  "surname": "Smith",
  "userPrincipalName": "ben.smith@contoso.com",
  "id": "5fa74bb7-b45b-426d-8ac7-446f090feeb5"
}
```

For each of the following statements, select Yes if the statement is true. Otherwise, select No.

NOTE: Each correct selection is worth one point.