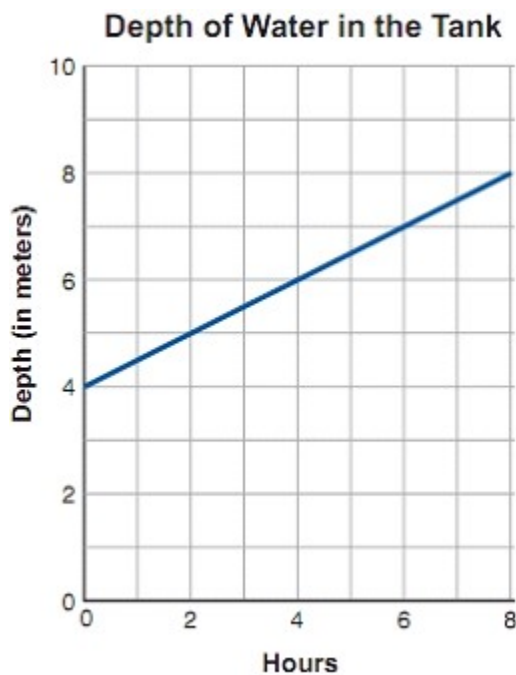


QUESTION 179

Which of the following functions represents the depth of water (d) in the tank in terms of the number of hours (t) after the refilling began?

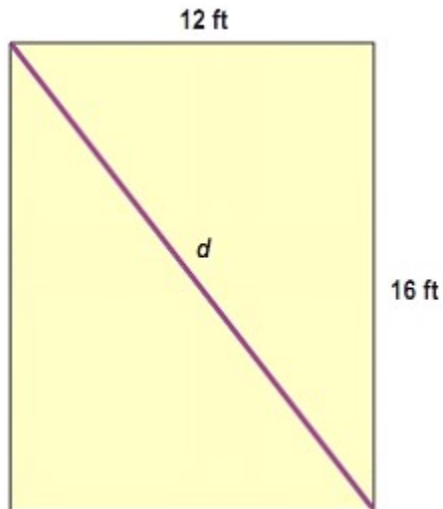


- A. $d = 2t + 4$
- B. $d = 2t$
- C. $d = 0.50t + 2$
- D. $d = 0.50t + 4$
- E. $d = 0.50t$

Correct Answer: D

QUESTION 180

A rectangular garden was separated into two equal areas by placing a fence along a diagonal of the rectangle, as shown in the diagram below.



What is the length (d), in feet, of the diagonal fence?

- A. 20
- B. 22
- C. 23
- D. 26
- E. 28

Correct Answer: A

QUESTION 181

Flavio needs a total of 48 ounces of beans to make chili for a party. He can buy 12-ounce cans for \$1.29 each or 16-ounce cans for \$1.49 each. How much would he SAVE by buying the 16-ounce cans?

- A. \$0.20
- B. \$0.69
- C. \$4.47
- D. \$5.16
- E. \$9.63

Correct Answer: B

QUESTION 182

If a skydiver with mass m , in kilograms, jumps from a plane, the maximum speed she will attain in free-fall (v), in meters per second, is given by the formula

$$v = \sqrt{39.2m}$$

Approximately what is the maximum speed, in meters per second, of a skydiver weighing 60 kilograms?

- A. 6.3

- B. 7.7
- C. 39.2
- D. 48.5
- E. 2352.0

Correct Answer: D

QUESTION 183

Ben has a net (after-tax) monthly income of \$1200. He has budgeted part of that money for the expenses listed in the table below.

Ben's Monthly Budget

Monthly Expenses	Amount Budgeted
Rent and utilities	\$650
Car insurance	\$85
Gasoline and car repairs	\$45
Food	\$180

Approximately what percent of Ben's net monthly income has he budgeted for expenses related to his car?

- A. 4%
- B. 7%
- C. 11%
- D. 14%
- E. 15%

Correct Answer: C

QUESTION 184

A team set a goal of winning 70 percent of the 40 games it would play. Of the first 10 games the team played, it won only 4. How many of the REMAINING games must the team win to reach its original goal?

- A. 19
- B. 23
- C. 24
- D. 28E. 32

Correct Answer: C

QUESTION 185

Santos runs a restaurant in his neighborhood. Of his employees, $\frac{4}{5}$ are willing to work nights. Of those willing to work nights, $\frac{3}{4}$ are willing to work on weekends. If Santos has 40 employees, how many are willing to work on weekend nights?

- A. 5
- B. 16
- C. 20
- D. 24
- E. 32

Correct Answer: B

QUESTION 186

A new store offered its first 80 customers a chance to win a prize by selecting a ball from a container. Of the 80 balls in the container, 45% contained a number that would win the customer a prize. How many of the first 80 customers won prizes?

- A. 45
- B. 36
- C. 35
- D. 24
- E. 20

Correct Answer: B

QUESTION 187

A storage room is 8 meters long, 4 meters wide, and 2 meters high. What is the volume of the storage room in cubic meters?

- A. 64
- B. 34
- C. 32
- D. 16
- E. 14

Correct Answer: A

QUESTION 188

Dana works four 10-hour days during the week and is off every Friday. If the first Friday of the month falls on the 3rd, which of the following dates during that month will also be a Friday?

- A. 13th
- B. 16th
- C. 18th
- D. 20th
- E. 24th

Correct Answer: E

QUESTION 189

A real estate agent has an appointment to show a house to a couple who lives out of town. It will take the couple 2 hours to drive to the house, but the real estate agent can get there in 45 minutes. If the couple left at 15 P.M., at what time should the real estate agent leave to arrive at the house at the same time?

- A. 00 P.M.
- B. 00 P.M.
- C. 35 P.M.
- D. 10 P.M.
- E. 30 P.M.

Correct Answer: B

QUESTION 190

A construction firm hired 8 carpenters at a rate of \$18 per hour and 4 helpers at a rate of \$9 per hour. What is the weekly cost for the construction firm to pay these workers for working a 40-hour week?

- A. \$12,960
- B. \$ 7,200
- C. \$ 3,600
- D. \$ 720
- E. \$ 180

Correct Answer: B

QUESTION 191

Ella wants to save \$800 for her college expenses. She has \$200 in her savings account now, and she can save an additional \$75 per week from her earnings at her part-time job. How many weeks will it be before Ella has \$800 in her savings account?

- A. 12
- B. 10
- C. 8
- D. 4
- E. Not enough information is given.

Correct Answer: C

QUESTION 192

If $x = 7$ and $y = 3x + 2$, what is the value of y ?

- A. $\frac{3}{5}$
- B. $\frac{5}{3}$
- C. 12
- D. 20
- E. 23

Correct Answer: E

QUESTION 193

[GED Mathematical Reasoning Exam Dumps](#) [GED Mathematical Reasoning PDF Dumps](#) [GED Mathematical Reasoning VCE Dumps](#) [GED Mathematical Reasoning Q&As](#)
<https://www.ensurepass.com/GED-Mathematical-Reasoning.html>