

[Download Full Version DA-100 Exam Dumps\(Updated in Feb/2023\)](#)

- Column distribution
- Column profile

Reference:

<https://community.powerbi.com/t5/Community-Blog/Data-Profiling-in-Power-BI-Power-BI-Update-April-2019/ba-p/674555>

QUESTION 30

Note: This question is part of a series of questions that present the same scenario. Each question in the series contains a unique solution that might meet the stated goals. Some question sets might have more than one correct solution, while others might not have a correct solution.

After you answer a question in this section, you will NOT be able to return to it. As a result, these questions will not appear in the review screen.

You create a parameter named DataSourceExcel that holds the file name and location of a Microsoft Excel data source.

You need to update the query to reference the parameter instead of multiple hard-coded copies of the location within each query definition.

Solution: You add a Power Apps custom visual to the report.

Does this meet the goal?

- A. Yes
- B. No

Correct Answer: A

QUESTION 31

HOTSPOT

You have two tables named Customers and Invoice in a Power BI model. The Customers table contains the following fields:

- CustomerID
- Customer City
- Customer State
- Customer Name
- Customer Address 1
- Customer Address 2
- Customer Postal Code

The Invoice table contains the following fields:

- Order ID
- Invoice ID
- Invoice Date
- Customer ID
- Total Amount
- Total Item Count

The Customers table is related to the Invoice table through the Customer ID columns. A customer can have many invoices within one month.

[DA-100 Exam Dumps](#) [DA-100 PDF Dumps](#) [DA-100 VCE Dumps](#) [DA-100 Q&As](#)

<https://www.ensurepass.com/DA-100.html>

[Download Full Version DA-100 Exam Dumps\(Updated in Feb/2023\)](#)

The Power BI model must provide the following information:

- The number of customers invoiced in each state last month
- The average invoice amount per customer in each postal code

You need to define the relationship from the Customers table to the Invoice table. The solution must optimize query performance.

What should you configure? To answer, select the appropriate options in the answer area.

NOTE: Each correct selection is worth one point.

Answer Area

Cardinality: ▼

| |
|--------------|
| Many-to-many |
| Many-to-one |
| One-to-many |
| One-to-one |

Cross-filter direction: ▼

| |
|--------|
| Both |
| Single |

Correct Answer:

Answer Area

Cardinality: ▼

| |
|--------------|
| Many-to-many |
| Many-to-one |
| One-to-many |
| One-to-one |

Cross-filter direction: ▼

| |
|--------|
| Both |
| Single |

[Download Full Version DA-100 Exam Dumps\(Updated in Feb/2023\)](#)

QUESTION 32

You are developing a report page. Some users will navigate the report by using a keyboard, and some users will consume the report by using a screen reader. You need to ensure that the users can consume the content on a report page in a logical order. What should you configure in Microsoft Power BI Desktop?

- A. the bookmark order
- B. the layer order
- C. the tab order
- D. the X position

Correct Answer: C

Explanation:

If you find yourself unable to navigate to an object or visual while using a keyboard, it may be because the report author has decided to hide that object from the tab order. Report authors commonly hide decorative objects from the tab order. If you find that you cannot tab through a report in a logical manner, you should contact the report author. Report authors can set the tab order for objects and visuals.

Reference:

<https://docs.microsoft.com/en-us/power-bi/create-reports/desktop-accessibility-consuming-tools>

QUESTION 33

HOTSPOT

You have two Azure SQL databases that contain the same tables and columns.

For each database, you create a query that retrieves data from a table named Customers.

You need to combine the Customer tables into a single table. The solution must minimize the size of the data model and support scheduled refresh in powerbi.com.

What should you do? To answer, select the appropriate options in the answer area.

NOTE: Each correct selection is worth one point.

Answer Area

Option to use to combine the Customer tables:

Append Queries
Append Queries as New
Merge Queries
Merge Queries as New

Action to perform on the original two SQL database queries:

Delete the queries.
Disable including the query in report refresh.
Disable loading the query to the data model.
Duplicate the queries.

Correct Answer:

Answer Area

Option to use to combine the Customer tables:

Append Queries
Append Queries as New
Merge Queries
Merge Queries as New

Action to perform on the original two SQL database queries:

Delete the queries.
Disable including the query in report refresh.
Disable loading the query to the data model.
Duplicate the queries.

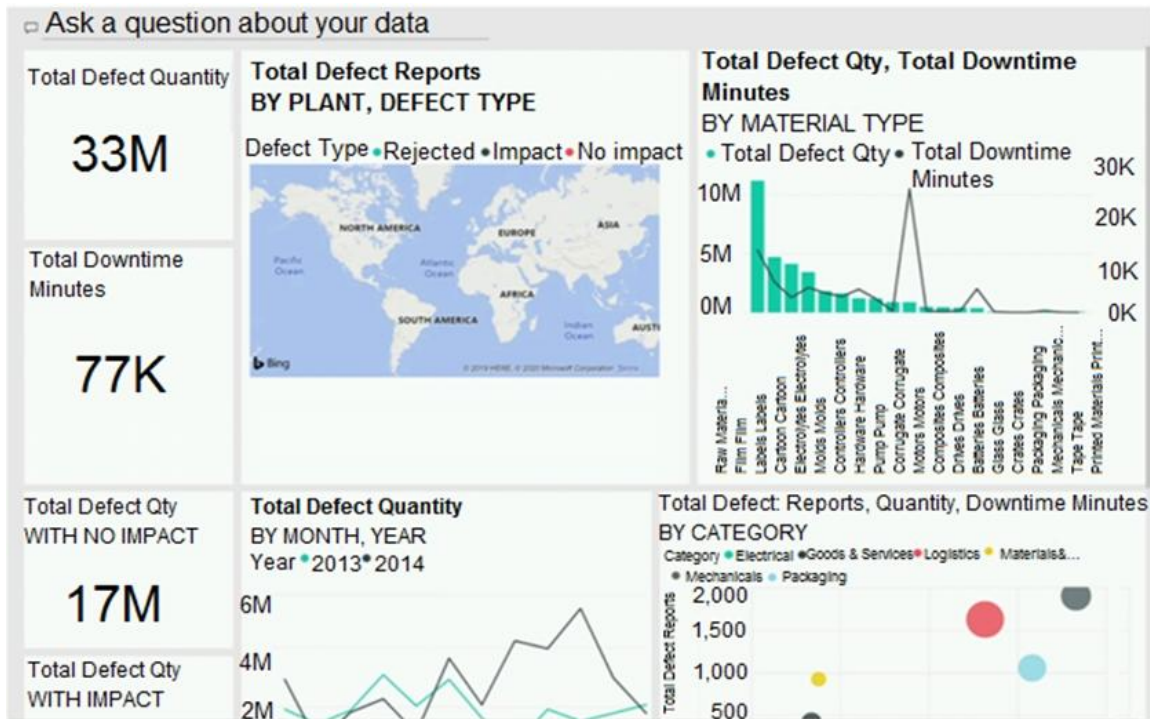
QUESTION 34

[DA-100 Exam Dumps](#) [DA-100 PDF Dumps](#) [DA-100 VCE Dumps](#) [DA-100 Q&As](#)

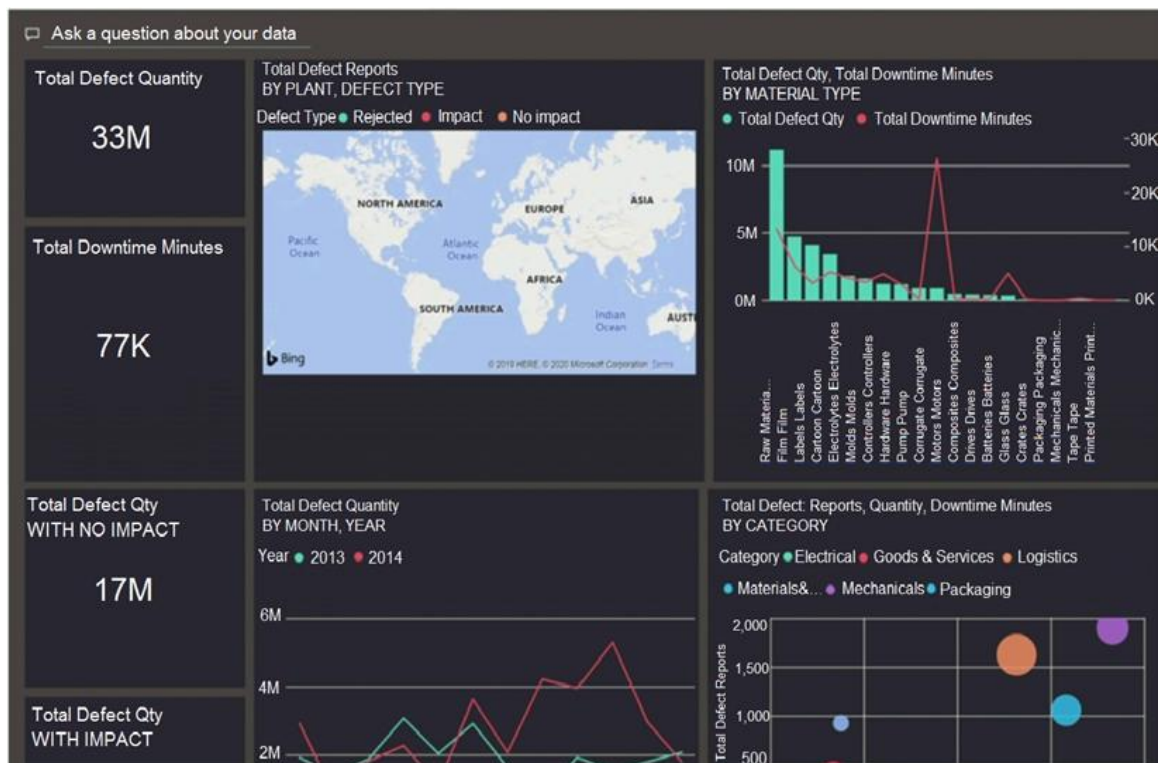
<https://www.ensurepass.com/DA-100.html>

[Download Full Version DA-100 Exam Dumps\(Updated in Feb/2023\)](#)

You have a dashboard that contains tiles pinned from a single report as shown in the Original Dashboard exhibit. (Click the Original Dashboard tab.)



You need to modify the dashboard to appear as shown in the Modified Dashboard exhibit. (Click the Modified Dashboard tab.)



[DA-100 Exam Dumps](#) [DA-100 PDF Dumps](#) [DA-100 VCE Dumps](#) [DA-100 Q&As](#)

<https://www.ensurepass.com/DA-100.html>

[Download Full Version DA-100 Exam Dumps\(Updated in Feb/2023\)](#)

What should you do?

- A. Edit the details of each tile.
- B. Change the report theme.
- C. Change the dashboard theme.
- D. Create a custom CSS file.

Correct Answer: C

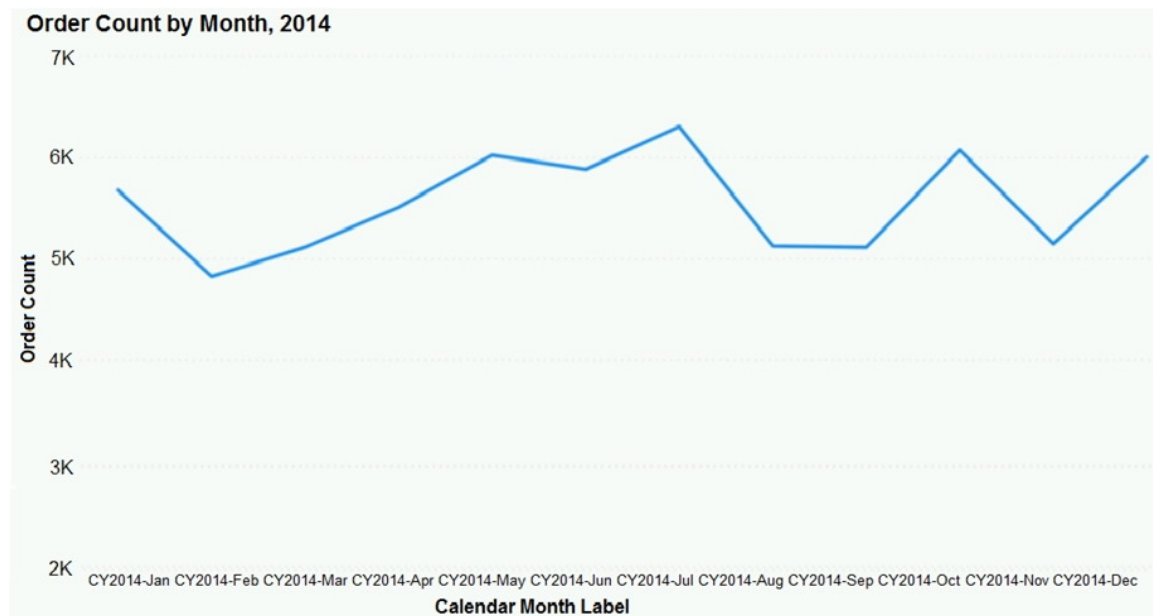
Explanation:

<https://docs.microsoft.com/en-us/power-bi/create-reports/service-dashboard-themes#how-dashboard-themes-work>

QUESTION 35

DRAG DROP

You have the line chart shown in the exhibit. (Click the Exhibit tab.)



You need to modify the chart to meet the following requirements:

- Identify months that have order counts above the mean.
- Display the mean monthly order count.

Which three actions should you perform in sequence? To answer, move the appropriate actions from the list of actions to the answer area and arrange them in the correct order.