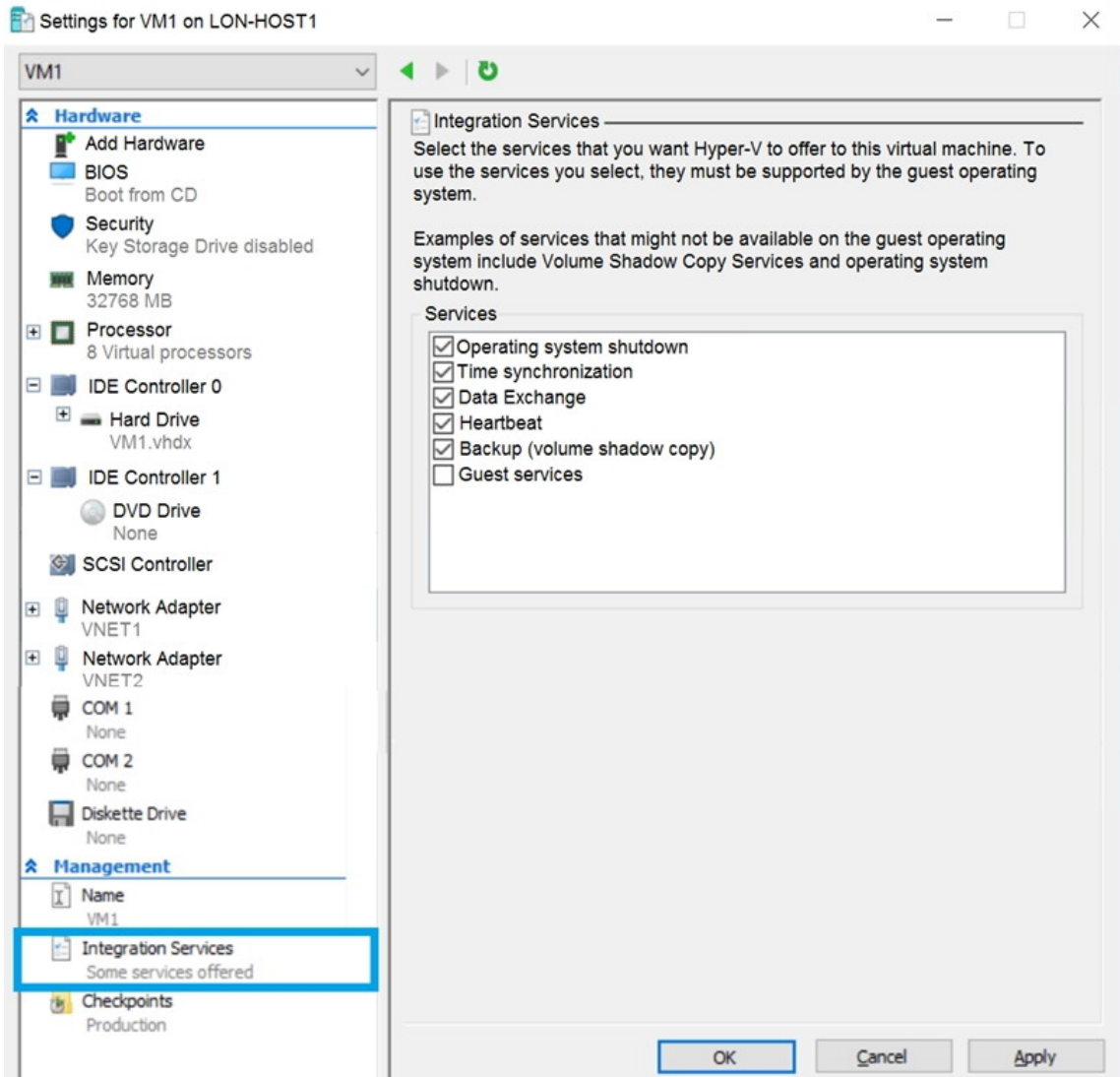


[Download Full Version AZ-104 Exam Dumps\(Updated in Feb/2023\)](#)



You need to ensure that you can use the disks attached to VM1 as a template for Azure virtual machines.

What should you modify on VM1?

- A. Integration Services
- B. the network adapters
- C. the memory
- D. the hard drive
- E. the processor

Correct Answer: D

Explanation:

From the exhibit we see that the disk is in the VHDX format.

Before you upload a Windows virtual machines (VM) from on-premises to Microsoft Azure, you must prepare the virtual hard disk (VHD or VHDX). Azure supports only generation 1 VMs that are in the VHD file format and have a fixed sized disk. The maximum size allowed for the VHD is

[AZ-104 Exam Dumps](#) [AZ-104 PDF Dumps](#) [AZ-104 VCE Dumps](#) [AZ-104 Q&As](#)

<https://www.ensurepass.com/AZ-104.html>

[Download Full Version AZ-104 Exam Dumps\(Updated in Feb/2023\)](#)

1,023 GB. You can convert a generation 1 VM from the VHDX file system to VHD and from a dynamically expanding disk to fixed-sized.

References:

<https://docs.microsoft.com/en-us/azure/virtual-machines/windows/prepare-for-upload-vhd-image?toc=%2fazure%2fvirtual-machines%2fwindows%2ftoc.json>

QUESTION 81

You have an Azure subscription that contains the resources shown in the following table.

Name	Type	Resource group
VNET1	Virtual network	RG1
VM1	Virtual machine	RG1

The Not allowed resources types Azure policy is assigned to RG1 and uses the following parameters:

- Microsoft.Network/virtualNetworks
- Microsoft.Compute/virtualMachines

In RG1, you need to create a new virtual named VM2, and then connected VM2 to VNET1.

What should you do first?

- Remove Microsoft.Network/virtualNetworks from the policy.
- Create an Azure Resource Manager template.
- Remove Microsoft.Compute/virtualMachines from the policy.
- Add a subnet to VNET1.

Correct Answer: C

Explanation:

The Not allowed resource types Azure policy prohibits the deployment of specified resource types. You specify an array of the resource types to block.

Virtual Networks and Virtual Machines are prohibited.

Reference:

<https://docs.microsoft.com/en-us/azure/governance/policy/samples/not-allowed-resource-types>

QUESTION 82

You have two subscriptions named Subscription1 and Subscription2. Each subscription is associated to a different Azure AD tenant.

Subscription1 contains a virtual network named VNet1. VNet1 contains an Azure virtual machine named VM1 and has an IP address space of 10.0.0.0/16.

Subscription2 contains a virtual network named VNet2. VNet2 contains an Azure virtual machine named VM2 and has an IP address space of 10.10.0.0/24.

You need to connect VNet1 to VNet2.

[AZ-104 Exam Dumps](#) [AZ-104 PDF Dumps](#) [AZ-104 VCE Dumps](#) [AZ-104 Q&As](#)

<https://www.ensurepass.com/AZ-104.html>

[Download Full Version AZ-104 Exam Dumps\(Updated in Feb/2023\)](#)

What should you do first?

- A. Move VNet1 to Subscription2.
- B. Modify the IP address space of VNet2.
- C. Provision virtual network gateways.
- D. Move VM1 to Subscription2.

Correct Answer: C

Explanation:

The virtual networks can be in the same or different regions, and from the same or different subscriptions. When connecting VNets from different subscriptions, the subscriptions do not need to be associated with the same Active Directory tenant.

Configuring a VNet-to-VNet connection is a good way to easily connect VNets. Connecting a virtual network to another virtual network using the VNet-to-VNet connection type (VNet2VNet) is similar to creating a Site-to-Site IPsec connection to an on-premises location. Both connectivity types use a VPN gateway to provide a secure tunnel using IPsec/IKE, and both function the same way when communicating.

The local network gateway for each VNet treats the other VNet as a local site. This lets you specify additional address space for the local network gateway in order to route traffic.

References:

<https://docs.microsoft.com/en-us/azure/vpn-gateway/vpn-gateway-howto-vnet-vnet-resource-manager-portal>

QUESTION 83

Your company has three offices. The offices are located in Miami, Los Angeles, and New York. Each office contains a datacenter.

You have an Azure subscription that contains resources in the East US and West US Azure regions. Each region contains a virtual network. The virtual networks are peered.

You need to connect the datacenters to the subscription. The solution must minimize network latency between the datacenters.

What should you create?

- A. three virtual WANs and one virtual hub
- B. three virtual hubs and one virtual WAN
- C. three On-premises data gateways and one Azure Application Gateway
- D. three Azure Application Gateways and one On-premises data gateway

Correct Answer: A

Explanation:

Azure Virtual WAN is a networking service that brings many networking, security, and routing functionalities together to provide a single operational interface.

The Virtual WAN architecture is a hub and spoke architecture with scale and performance built in for branches (VPN/SD-WAN devices), users (Azure VPN/OpenVPN/IKEv2 clients), ExpressRoute circuits, and virtual networks.

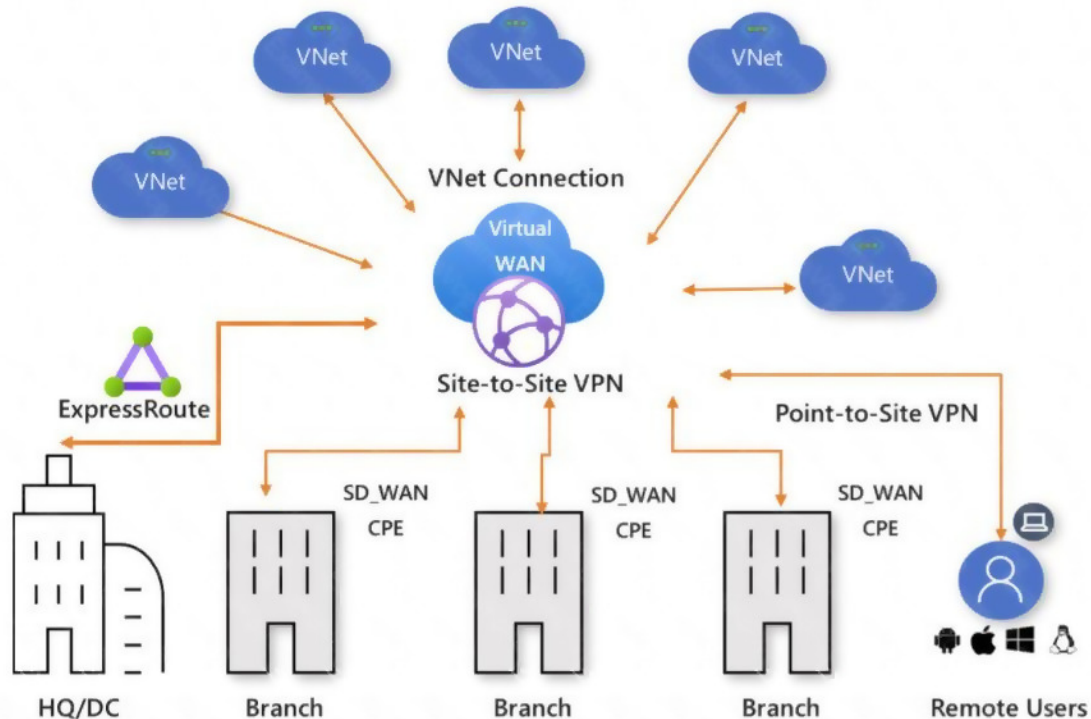
Azure regions serve as hubs that you can choose to connect to. All hubs are connected in full mesh in a Standard Virtual WAN making it easy for the user to use the Microsoft backbone for

[AZ-104 Exam Dumps](#) [AZ-104 PDF Dumps](#) [AZ-104 VCE Dumps](#) [AZ-104 Q&As](#)

<https://www.ensurepass.com/AZ-104.html>

[Download Full Version AZ-104 Exam Dumps\(Updated in Feb/2023\)](#)

any-to-any (any spoke) connectivity.



Virtual WAN offers the following advantages:

- Integrated connectivity solutions in hub and spoke: Automate site-to-site configuration and connectivity between on-premises sites and an Azure hub.
- Automated spoke setup and configuration: Connect your virtual networks and workloads to the Azure hub seamlessly.
- Intuitive troubleshooting: You can see the end-to-end flow within Azure, and then use this information to take required actions.

Reference:

<https://docs.microsoft.com/en-us/azure/virtual-wan/virtual-wan-about>

QUESTION 84

Note: This question is part of a series of questions that present the same scenario. Each question in the series contains a unique solution that might meet the stated goals. Some question sets might have more than one correct solution, while others might not have a correct solution.

After you answer a question in this section, you will NOT be able to return to it. As a result, these questions will not appear in the review screen.

You deploy an Azure Kubernetes Service (AKS) cluster named AKS1.

You need to deploy a YAML file to AKS1.

Solution: From the Azure CLI, you run the kubectl client.

[AZ-104 Exam Dumps](#) [AZ-104 PDF Dumps](#) [AZ-104 VCE Dumps](#) [AZ-104 Q&As](#)
<https://www.ensurepass.com/AZ-104.html>

[Download Full Version AZ-104 Exam Dumps\(Updated in Feb/2023\)](#)

Does this meet the goal?

- A. Yes
- B. No

Correct Answer: B

Explanation:

Installing Azure CLI doesn't mean that Azure Kubernetes client is installed. So before running kubectl client command, you have install kubectl, the Kubernetes command-line client.

First need to run `az aks install-cli` to install Kubernetes CLI, which is `kubectl`

Reference:

<https://docs.microsoft.com/en-us/cli/azure/aks?view=azure-cli-latest>

QUESTION 85

DRAG DROP

You have an Azure subscription named Subscription1.

You create an Azure Storage account named contosostorage, and then you create a file share named data.

Which UNC path should you include in a script that references files from the data file share? To answer, drag the appropriate values to the correct targets. Each value may be used once, more than once, or not at all. You may need to drag the split bar between panes or scroll to view content.

NOTE: Each correct selection is worth one point.

Values	Answer Area
<input type="text" value="blob"/>	\\ <input type="text" value="Value"/> . <input type="text" value="Value"/> \ <input type="text" value="Value"/>
<input type="text" value="blob.core.windows.net"/>	
<input type="text" value="contosostorage"/>	
<input type="text" value="data"/>	
<input type="text" value="file"/>	
<input type="text" value="file.core.windows.net"/>	
<input type="text" value="portal.azure.com"/>	
<input type="text" value="subscription1"/>	

Correct Answer: