

[Download Full Version AZ-100 Exam Dumps\(Updated in Feb/2023\)](#)

Home > Microsoft.StorageAccount-20181011170335 - Overview

Microsoft.StorageAccount-20181011170335 - Overview

Deployment


Search (Ctrl+/)

Overview
Outputs
Inputs
Template

Delete Cancel Redeploy Refresh

Your deployment is underway

Check the status of your deployment, manage resources, or troubleshoot deployment issues. Pin this page to your dashboard to easily find it next time.

 Deployment
name: Microsoft.StorageAccount-20181011170335
Subscription: [Microsoft AZ-100 5](#)
Resource group: [corpdatalod7523690](#)

DEPLOYMENT DETAILS [\(Download\)](#)

Start time: 10/11/2018 5:04:06 PM
Duration: 17 seconds
Correlation ID: bd0806a4-d1bd-42db-be6b-55e0ec38f49b

RESOURCE	TYPE	STATUS	OPERATI...
No results.			

[Download Full Version AZ-100 Exam Dumps\(Updated in Feb/2023\)](#)

Home > Virtual machines > Create a virtual machine

Create a virtual machine

Validation failed. Required information is missing or not valid.

Basics • Disks Networking Management Guest config Tags Review + create

PRODUCT DETAILS

Ubuntu Server 18.04 LTS
by Canonical
[Terms of use](#) | [Privacy policy](#)

Standard D2s v3
by Microsoft
[Terms of use](#) | [Privacy policy](#)

TERMS

By clicking "Create", I (a) agree to the legal terms and privacy statement(s) associated with the Marketplace offering(s) listed above; (b) authorize Microsoft to bill my current payment method for the fees associated with the offering(s), with the same billing frequency as my Azure subscription; and (c) agree that Microsoft may share my contact, usage and transactional information with the provider(s) of the offering(s) for support, billing and other transactional activities. Microsoft does not provide rights for third-party offerings. See the [Azure Marketplace Terms](#) for additional details.

Pricing not available for this offering
View [Pricing details](#) for more information.

Subscription credits apply ⓘ
0.0960 USD/hr
[Pricing for other VM sizes](#)

When you are finished performing all the tasks, click the 'Next' button.

Note that you cannot return to the lab once you click the 'Next' button. Scoring occurs in the background while you complete the rest of the exam.

Overview

The following section of the exam is a lab. In this section, you will perform a set of tasks in a live environment. While most functionality will be available to you as it would be in a live environment, some functionality (e.g., copy and paste, ability to navigate to external websites) will not be possible by design. Scoring is based on the outcome of performing the tasks stated in the lab. In other words, it doesn't matter how you accomplish the task, if you successfully perform it, you will earn credit for that task.

Labs are not timed separately, and this exam may have more than one lab that you must complete. You can use as much time as you would like to complete each lab. But, you should manage your time appropriately to ensure that you are able to complete the lab(s) and all other sections of the exam in the time provided.

Please note that once you submit your work by clicking the Next button within a lab, you will NOT be able to return to the lab.

To start the lab

You may start the lab by clicking the Next button.

You plan to create several virtual machines in different availability zones, and then to configure

[AZ-100 Exam Dumps](#) [AZ-100 PDF Dumps](#) [AZ-100 VCE Dumps](#) [AZ-100 Q&As](#)

<https://www.ensurepass.com/AZ-100.html>

[Download Full Version AZ-100 Exam Dumps\(Updated in Feb/2023\)](#)

the virtual machines for load balanced connections from the Internet.

You need to create an IP address resource named ip1006 to support the planned load balancing solution. The solution must minimize costs.

What should you do from the Azure portal?

Correct Answer: See solution below.

Explanation:

We should create a public IP address.

At the top, left corner of the portal, select + Create a resource.

Enter public ip address in the Search the Marketplace box. When Public IP address appears in the search results, select it.

Under Public IP address, select Create.

Enter, or select values for the following settings, under Create public IP address, then select Create:

Name: ip1006

SKU: Basic SKU

IP Version: IPv6

IP address assignment: Dynamic

Subscription: Select appropriate

Resource group: Select appropriate

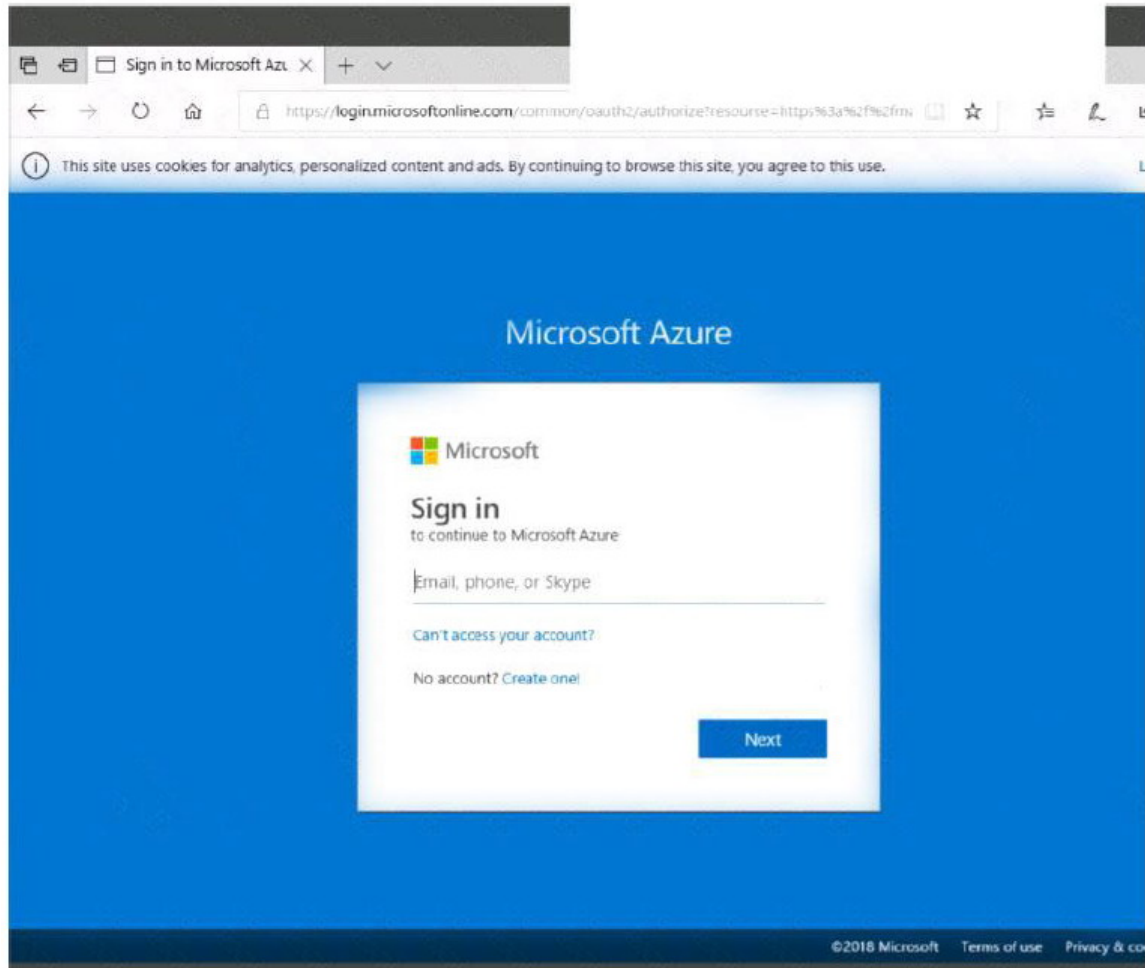
References:

<https://docs.microsoft.com/en-us/azure/virtual-network/virtual-network-public-ip-address>

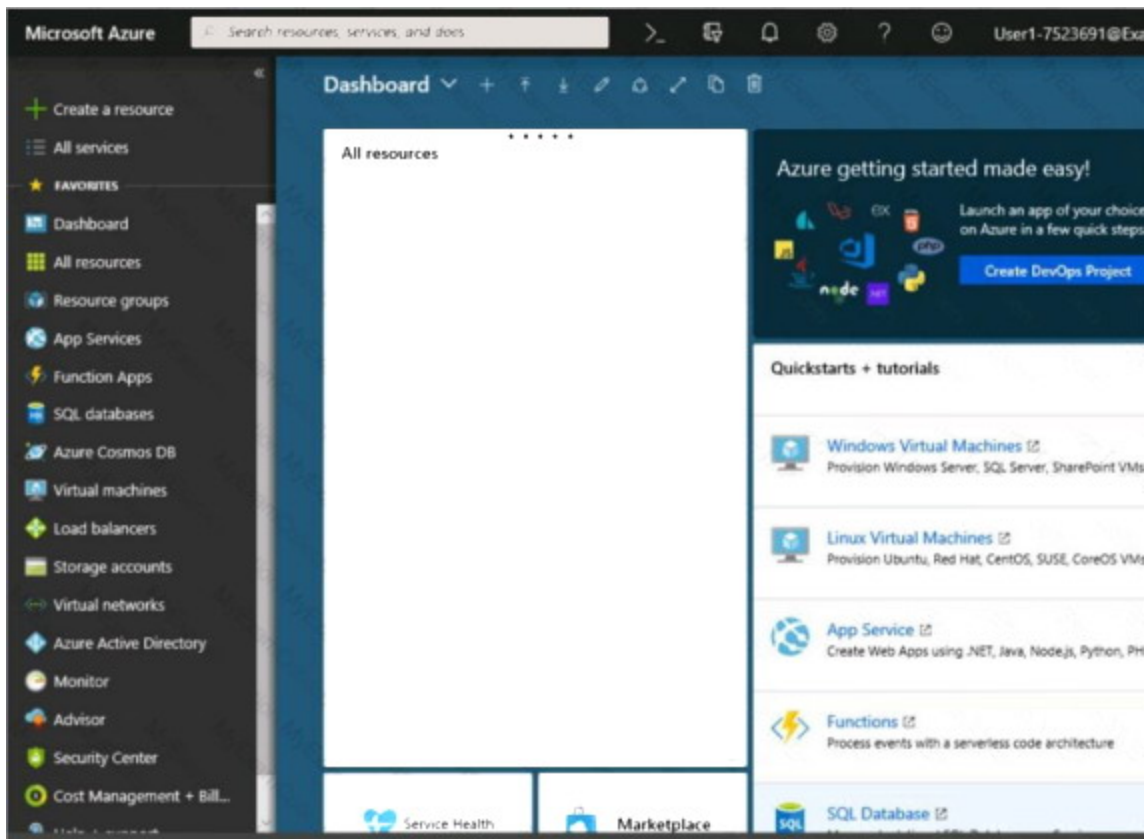
QUESTION 60

Click to expand each objective. To connect to the Azure portal, type <https://portal.azure.com> in the browser address bar.

[Download Full Version AZ-100 Exam Dumps\(Updated in Feb/2023\)](#)



[Download Full Version AZ-100 Exam Dumps\(Updated in Feb/2023\)](#)



Instructions

Comments

Controls Available

Keyboard Shortcuts Available

Tasks

Click to expand each objective

- Configure servers
 - ☐ Add the "Print and Document Services" role to server LON-SVR1, installing any required management features and enabling both Print and LPD Services.
- + Configure file and share access

When you are finished performing all the tasks, click the 'Next' button.

Note that you cannot return to the lab once you click the 'Next' button. Scoring occurs in the background while you complete the rest of the exam.

Overview

The following section of the exam is a lab. In this section, you will perform a set of tasks in a live environment. While most functionality will be available to you as it would be in a live environment, some functionality (e.g., copy and paste, ability to navigate to external websites) will not be possible by design. Scoring is based on the outcome of performing the tasks stated in the lab. In other words, it doesn't matter how you accomplish the task, if you successfully perform it, you will

[AZ-100 Exam Dumps](#) [AZ-100 PDF Dumps](#) [AZ-100 VCE Dumps](#) [AZ-100 Q&As](#)

<https://www.ensurepass.com/AZ-100.html>