

## **[Download Full Version AZ-100 Exam Dumps\(Updated in Feb/2023\)](#)**

### **QUESTION 57**

You have two subscriptions named Subscription1 and Subscription2. Each subscription is associated to a different Azure AD tenant.

Subscription1 contains a virtual network named VNet1. VNet1 contains an Azure virtual machine named VM1 and has an IP address space of 10.0.0.0/16.

Subscription2 contains a virtual network named VNet2. VNet2 contains an Azure virtual machine named VM2 and has an IP address space of 10.10.0.0/24.

You need to connect VNet1 to VNet2.

What should you do first?

- A. Move VNet1 to Subscription2.
- B. Modify the IP address space of VNet2.
- C. Provision virtual network gateways.
- D. Move VM1 to Subscription2.

**Correct Answer: C**

#### **Explanation:**

The virtual networks can be in the same or different regions, and from the same or different subscriptions. When connecting VNets from different subscriptions, the subscriptions do not need to be associated with the same Active Directory tenant.

Configuring a VNet-to-VNet connection is a good way to easily connect VNets. Connecting a virtual network to another virtual network using the VNet-to-VNet connection type (VNet2VNet) is similar to creating a Site-to-Site IPsec connection to an on-premises location. Both connectivity types use a VPN gateway to provide a secure tunnel using IPsec/IKE, and both function the same way when communicating.

The local network gateway for each VNet treats the other VNet as a local site. This lets you specify additional address space for the local network gateway in order to route traffic.

References:

<https://docs.microsoft.com/en-us/azure/vpn-gateway/vpn-gateway-howto-vnet-vnet-resource-manager-portal>

### **QUESTION 58**

Note: This question is part of a series of questions that present the same scenario. Each question in the series contains a unique solution that might meet the stated goals. Some question sets might have more than one correct solution, while others might not have a correct solution.

After you answer a question in this section, you will NOT be able to return to it. As a result, these questions will not appear in the review screen.

You have an Azure virtual machine named VM1. VM1 was deployed by using a custom Azure Resource Manager template named ARM1.json.

You receive a notification that VM1 will be affected by maintenance.

You need to move VM1 to a different host immediately.

## [Download Full Version AZ-100 Exam Dumps\(Updated in Feb/2023\)](#)

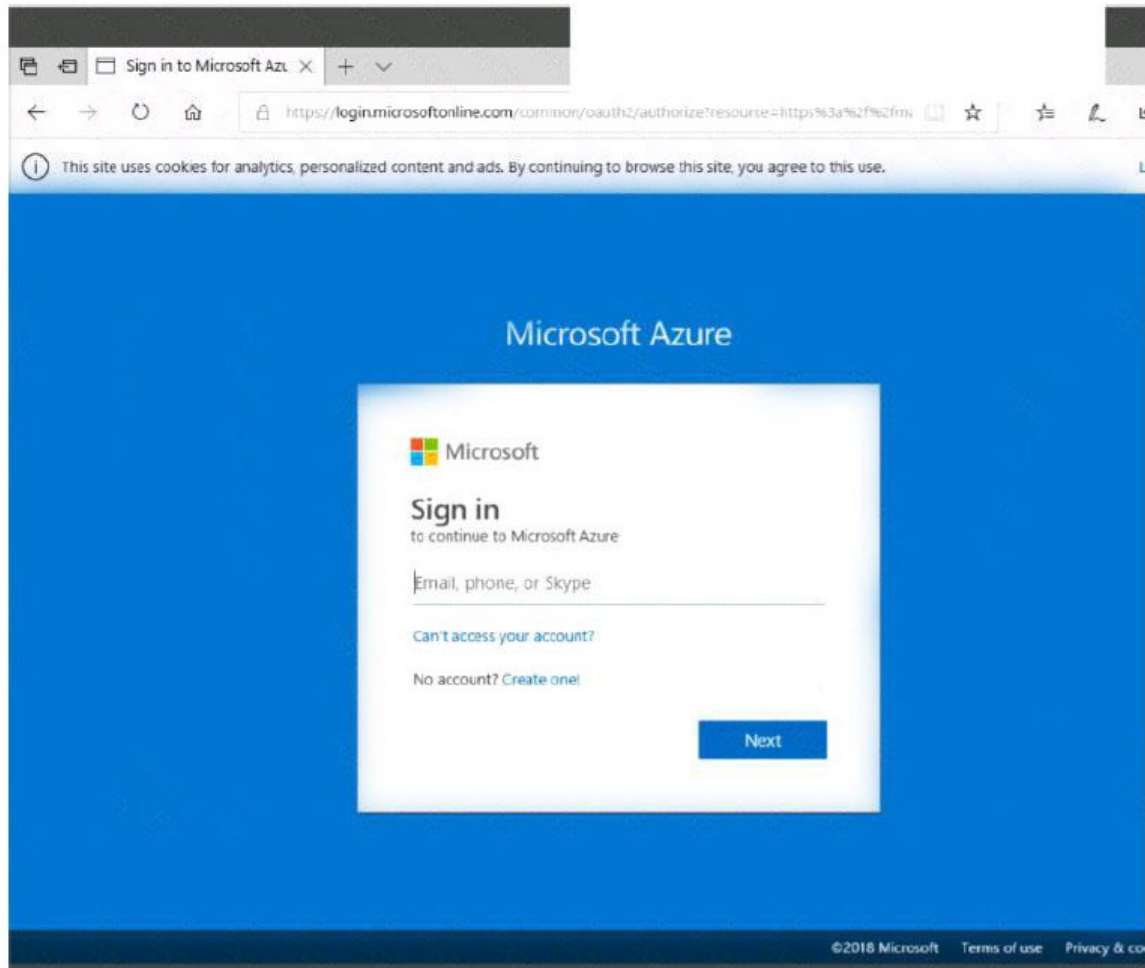
Solution: From the Overview blade, you move the virtual machine to a different resource group. Does this meet the goal?

- A. Yes
- B. No

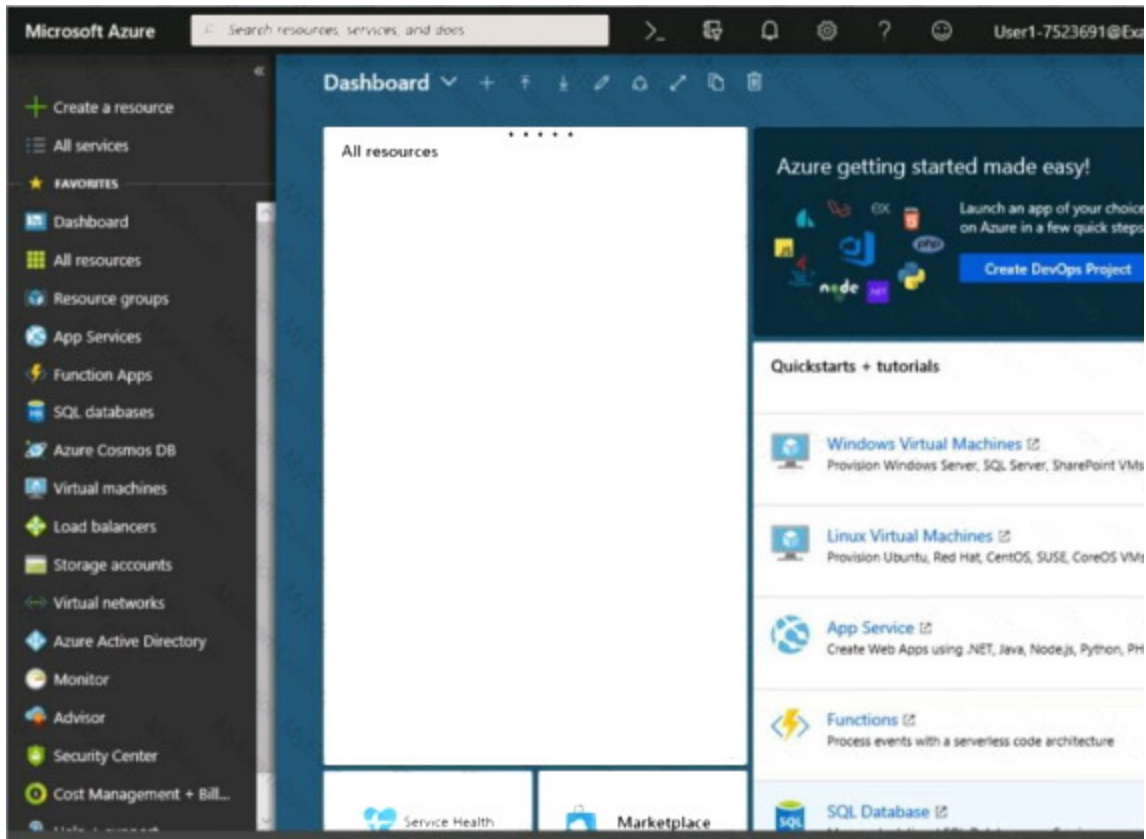
**Correct Answer: B**

### **QUESTION 59**

Click to expand each objective. To connect to the Azure portal, type <https://portal.azure.com> in the browser address bar.



## [Download Full Version AZ-100 Exam Dumps\(Updated in Feb/2023\)](#)



[AZ-100 Exam Dumps](#)   [AZ-100 PDF Dumps](#)   [AZ-100 VCE Dumps](#)   [AZ-100 Q&As](#)

<https://www.ensurepass.com/AZ-100.html>

## [Download Full Version AZ-100 Exam Dumps\(Updated in Feb/2023\)](#)

[Home](#) > [Storage accounts](#) > Create storage account

### Create storage account

✓ Validation passed

[Basics](#) [Advanced](#) [Tags](#) [Review + create](#)

**BASICS**

Subscription	Microsoft AZ-100 5
Resource group	corpdatalod7523690
Location	East US
Storage account name	corpdata7523690n1
Deployment model	Resource manager
Account kind	StorageV2 (general purpose v2)
Replication	Read-access geo-redundant storage (RA-GRS)
Performance	Standard
Access tier (default)	Hot

**ADVANCED**

Secure transfer required	Enabled
Hierarchical namespace	Disabled

[Create](#) [Previous](#) [Next](#) [Download a template for automation](#)

## [Download Full Version AZ-100 Exam Dumps\(Updated in Feb/2023\)](#)

Home > Storage accounts > Create storage account

### Create storage account

Submitting deployment...  
Submitting the deployment template for resource 'corpdatalod7523690'.

Basics Advanced Tags Review + create

**BASICS**

Subscription	Microsoft AZ-100 5
Resource group	corpdatalod7523690
Location	East US
Storage account name	corpdata7523690n1
Deployment model	Resource manager
Account kind	StorageV2 (general purpose v2)
Replication	Read-access geo-redundant storage (RA-GRS)
Performance	Standard
Access tier (default)	Hot

**ADVANCED**

Secure transfer required	Enabled
Hierarchical namespace	Disabled