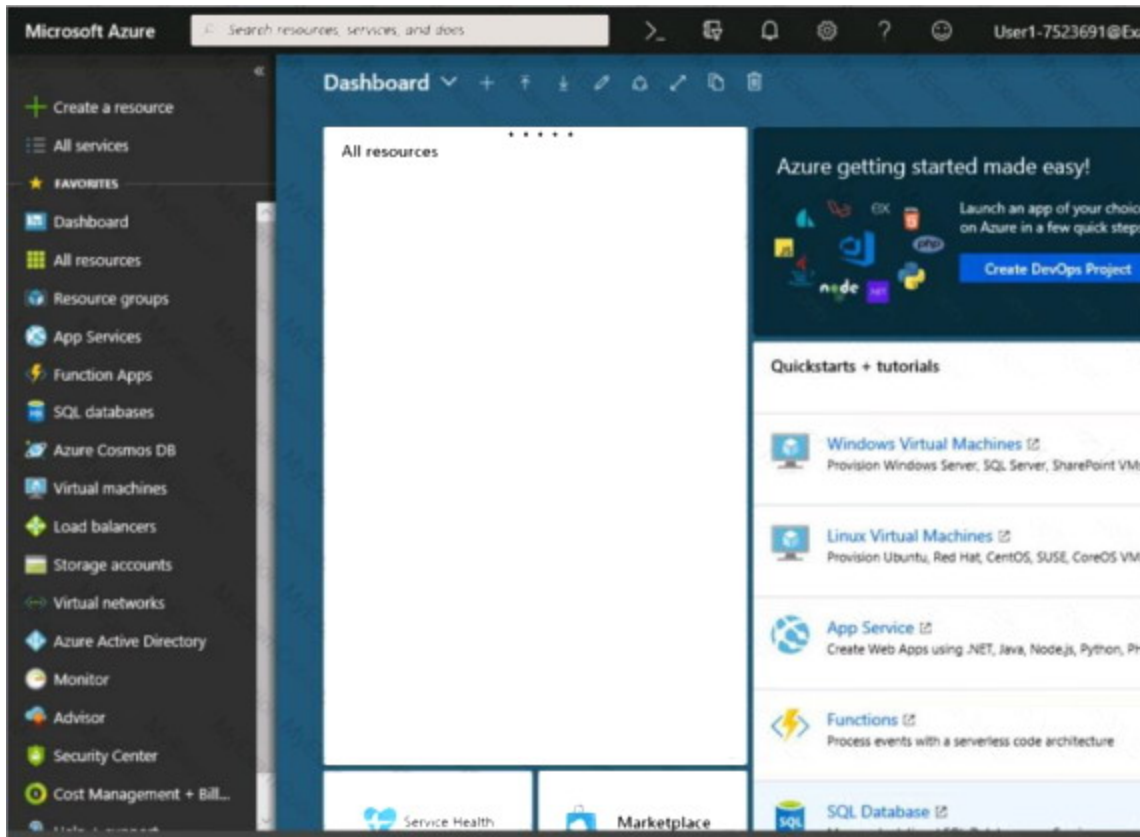


[Download Full Version AZ-100 Exam Dumps\(Updated in Feb/2023\)](#)



[Download Full Version AZ-100 Exam Dumps\(Updated in Feb/2023\)](#)

[Home](#) > [Storage accounts](#) > [Create storage account](#)

Create storage account

✓ Validation passed

[Basics](#) [Advanced](#) [Tags](#) [Review + create](#)

BASICS

Subscription	Microsoft AZ-100 5
Resource group	corpdatalod7523690
Location	East US
Storage account name	corpdata7523690n1
Deployment model	Resource manager
Account kind	StorageV2 (general purpose v2)
Replication	Read-access geo-redundant storage (RA-GRS)
Performance	Standard
Access tier (default)	Hot

ADVANCED

Secure transfer required	Enabled
Hierarchical namespace	Disabled

Create

Previous

Next

[Download a template for automation](#)

[AZ-100 Exam Dumps](#) [AZ-100 PDF Dumps](#) [AZ-100 VCE Dumps](#) [AZ-100 Q&As](#)

<https://www.ensurepass.com/AZ-100.html>

[Download Full Version AZ-100 Exam Dumps\(Updated in Feb/2023\)](#)

Home > Storage accounts > Create storage account

Create storage account

Submitting deployment...

Submitting the deployment template for resource 'corpdata1od7523690'.

Basics Advanced Tags **Review + create**

BASICS

Subscription	Microsoft AZ-100 5
Resource group	corpdata1od7523690
Location	East US
Storage account name	corpdata7523690n1
Deployment model	Resource manager
Account kind	StorageV2 (general purpose v2)
Replication	Read-access geo-redundant storage (RA-GRS)
Performance	Standard
Access tier (default)	Hot

ADVANCED

Secure transfer required	Enabled
Hierarchical namespace	Disabled

[Download Full Version AZ-100 Exam Dumps\(Updated in Feb/2023\)](#)

Home > Microsoft.StorageAccount-20181011170335 - Overview

Microsoft.StorageAccount-20181011170335 - Overview

Deployment

Search (Ctrl+F)

Delete Cancel Redeploy Refresh

- Overview
- Outputs
- Inputs
- Template

Your deployment is underway

Check the status of your deployment, manage resources, or troubleshoot deployment issues. Pin this page to your dashboard to easily find it next time.

Deployment
name: Microsoft.StorageAccount-20181011170335
Subscription: [Microsoft AZ-100 5](#)
Resource group: [corpdatalod7523690](#)

DEPLOYMENT DETAILS [\(Download\)](#)


Start time: 10/11/2018 5:04:06 PM
Duration: 17 seconds
Correlation ID: bd0806a4-d1bd-42db-be6b-55e0ec38f49b

RESOURCE	TYPE	STATUS	OPERATI...
No results.			

[Download Full Version AZ-100 Exam Dumps\(Updated in Feb/2023\)](#)

Home > Virtual machines > Create a virtual machine

Create a virtual machine

 Validation failed. Required information is missing or not valid.

Basics • Disks Networking Management Guest config Tags Review + create

PRODUCT DETAILS

Ubuntu Server 18.04 LTS
by Canonical
[Terms of use](#) | [Privacy policy](#)

Standard D2s v3
by Microsoft
[Terms of use](#) | [Privacy policy](#)

TERMS

By clicking "Create", I (a) agree to the legal terms and privacy statement(s) associated with the Marketplace offering(s) listed above; (b) authorize Microsoft to bill my current payment method for the fees associated with the offering(s), with the same billing frequency as my Azure subscription; and (c) agree that Microsoft may share my contact, usage and transactional information with the provider(s) of the offering(s) for support, billing and other transactional activities. Microsoft does not provide rights for third-party offerings. See the [Azure Marketplace Terms](#) for additional details.

Pricing not available for this offering
View [Pricing details](#) for more information.

Subscription credits apply ⓘ
0.0960 USD/hr
[Pricing for other VM sizes](#)

When you are finished performing all the tasks, click the 'Next' button.

Note that you cannot return to the lab once you click the 'Next' button. Scoring occurs in the background while you complete the rest of the exam.

Overview

The following section of the exam is a lab. In this section, you will perform a set of tasks in a live environment. While most functionality will be available to you as it would be in a live environment, some functionality (e.g., copy and paste, ability to navigate to external websites) will not be possible by design. Scoring is based on the outcome of performing the tasks stated in the lab. In other words, it doesn't matter how you accomplish the task, if you successfully perform it, you will earn credit for that task.

Labs are not timed separately, and this exam may have more than one lab that you must complete. You can use as much time as you would like to complete each lab. But, you should manage your time appropriately to ensure that you are able to complete the lab(s) and all other sections of the exam in the time provided.

Please note that once you submit your work by clicking the Next button within a lab, you will NOT be able to return to the lab.

To start the lab

You may start the lab by clicking the Next button.

You need to deploy two Azure virtual machines named VM1003a and VM1003b based on the

[AZ-100 Exam Dumps](#) [AZ-100 PDF Dumps](#) [AZ-100 VCE Dumps](#) [AZ-100 Q&As](#)

<https://www.ensurepass.com/AZ-100.html>