

[Download Full Version 350-901 Exam Dumps\(Updated in Feb/2023\)](#)

QUESTION 1

Where should distributed load balancing occur in a horizontally scalable architecture?

- A. firewall-side/policy load balancing
- B. network-side/central load balancing
- C. service-side/remote load balancing
- D. client-side/local load balancing

Correct Answer: B

QUESTION 2

A cloud native project is being worked on in which all source code and dependencies are written in Python, Ruby, and/or JavaScript. A change in code triggers a notification to the CI/CD tool to run the CI/CD pipeline. Which step should be omitted from the pipeline?

- A. Deploy the code to one or more environments, such as staging and/or production.
- B. Build one of more containers that package up code and all its dependencies.
- C. Compile code.
- D. Run automated tests to validate the correctness.

Correct Answer: A

QUESTION 3

A heterogeneous network of vendors and device types needs automating for better efficiency and to enable future automated testing. The network consists of switches, routers, firewalls and load balancers from different vendors, however they all support the NETCONF/RESTCONF configuration standards and the YAML models with every feature the business requires. The business is looking for a buy versus build solution because they cannot dedicate engineering resources, and they need configuration diff and rollback functionality from day 1. Which configuration management for automation tooling is needed for this solution?

- A. Ansible
- B. Ansible and Terraform
- C. NSO
- D. Terraform
- E. Ansible and NSO

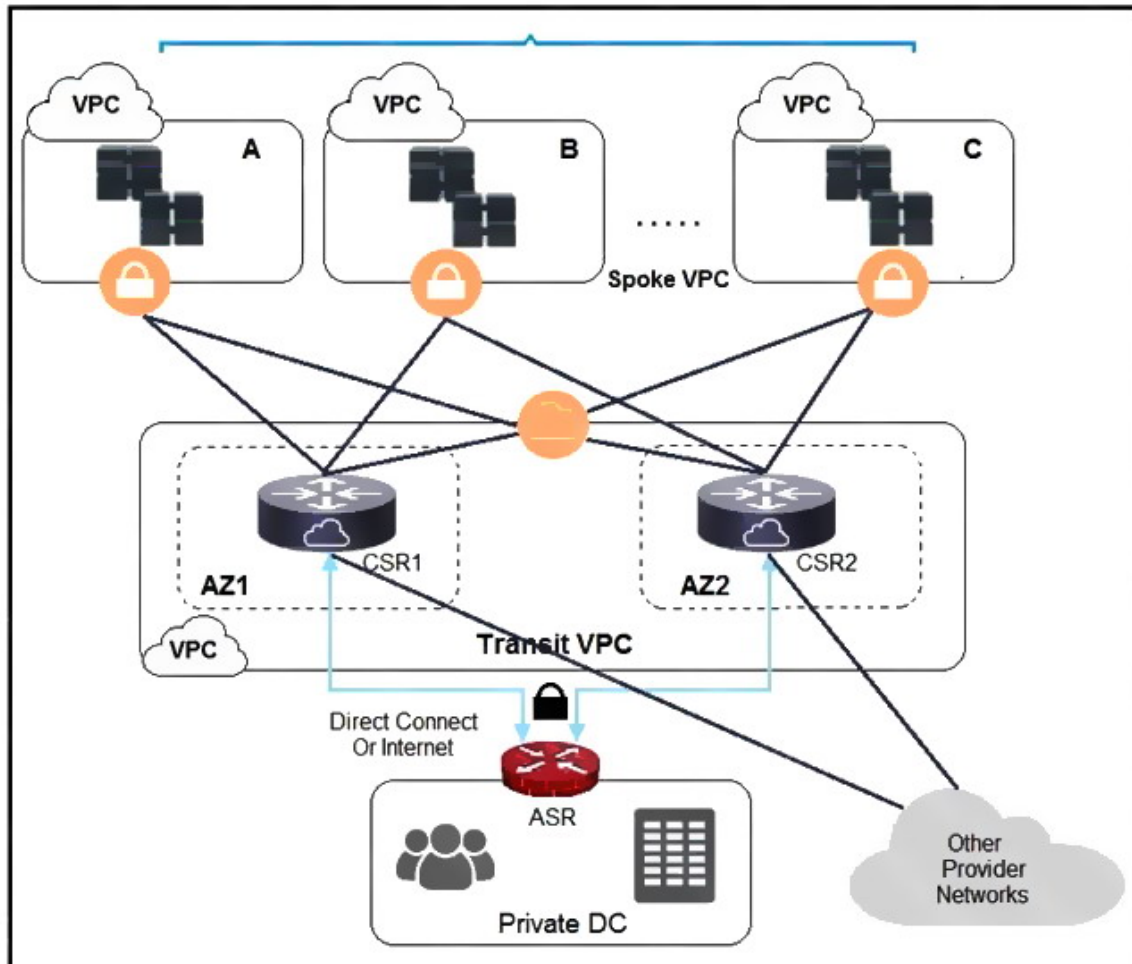
Correct Answer: E

QUESTION 4

[350-901 Exam Dumps](#) [350-901 PDF Dumps](#) [350-901 VCE Dumps](#) [350-901 Q&As](#)
<https://www.ensurepass.com/350-901.html>

[Download Full Version 350-901 Exam Dumps\(Updated in Feb/2023\)](#)

Refer to the exhibit. A company has extended networking from the data center to the cloud through Transit VPC. Which two statements describe the benefits of this approach? (Choose two.)



- A. Dynamic routing combined with multi-AZ- deployment creates a robust network infrastructure.
- B. VPC virtual gateways provide highly available connections to virtual networks.
- C. Dedicated VPC simplifies load balancing by combining internal and external web services.
- D. VPC virtual gateways provide more secure connections to virtual networks.
- E. Dedicated VPC simplifies routing by not combining this service with other shared services.

Correct Answer: BD

QUESTION 5

[350-901 Exam Dumps](#) [350-901 PDF Dumps](#) [350-901 VCE Dumps](#) [350-901 Q&As](#)
<https://www.ensurepass.com/350-901.html>

[Download Full Version 350-901 Exam Dumps\(Updated in Feb/2023\)](#)

Refer to the exhibit. This script uses ciscoyang to configure two VRF instances on a Cisco IOS-XR device using the Yang NETCONF type. Which two words are required to complete the script? (Choose two.)

```
node 'default' {
  cisco_yang_netconf { 'my-config' :
    target => '<vrf xmlns='http://cisco.com/ns/yang/Cisco-IOS-XR-infra-rsi-cfg"/>' ,
    source => '<vrf xmlns='http://cisco.com/ns/yang/Cisco-IOS-XR-infra-rsi-cfg"'>
      <vrf>
        <vrf-name>VOIP</vrf-name>
        <create/>
        <description>Voice over IP</description>
        <vpn-id>
          <vpn-oui>875</vpn-oui>
          <vpn-index>3</vpn-index>
        </vpn-id>
      </vrf>
      <vrf>
        <vrf-name>INTERNET</vrf-name>
        <create/>
        <description>Generic external traffic</description>
        <vpn-id>
          <vpn-oui>875</vpn-oui>
          <vpn-index>22</vpn-index>
        </vpn-id>
      </vrf>
    </vrf>
  }
  mode => ,
  force => ,
}
--
```

- A. ensure
- B. commit
- C. false
- D. replace
- E. none

Correct Answer: CD

QUESTION 6

[350-901 Exam Dumps](#) [350-901 PDF Dumps](#) [350-901 VCE Dumps](#) [350-901 Q&As](#)
<https://www.ensurepass.com/350-901.html>

[Download Full Version 350-901 Exam Dumps\(Updated in Feb/2023\)](#)

DRAG DROP

Drag and drop the characteristics from the left onto the correct data processing techniques on the right, in the context of GDPR.

processing of personal data in such a manner that the personal data can no longer be attributed to a specific data subject without the use of additional information	Data anonymization
data stripped of sufficient elements such that the data subject can no longer be identified	
can be re-identified	Data pseudonymization
cannot be re-identified	

Correct Answer:

processing of personal data in such a manner that the personal data can no longer be attributed to a specific data subject without the use of additional information	Data anonymization
data stripped of sufficient elements such that the data subject can no longer be identified	
can be re-identified	Data pseudonymization
cannot be re-identified	

can be re-identified

data stripped of sufficient elements such that the data subject can no longer be identified

cannot be re-identified

processing of personal data in such a manner that the personal data can no longer be attributed to a specific data subject without the use of additional information

QUESTION 7

AppGigabitEthernet interface is used as data port for a container on a Cisco Catalyst 9000 Series Switch. Which two interface configuration options should be used? (Choose two.)

- A. trunk interface
- B. bridged virtual interface
- C. SPAN port
- D. management interface
- E. subinterface

Correct Answer: AC

QUESTION 8

[350-901 Exam Dumps](#) [350-901 PDF Dumps](#) [350-901 VCE Dumps](#) [350-901 Q&As](#)
<https://www.ensurepass.com/350-901.html>

[Download Full Version 350-901 Exam Dumps\(Updated in Feb/2023\)](#)

Refer to the exhibit. The Ansible playbook is using the netconf_module to configure an interface using a YANG model. As part of this workflow, which YANG models augment the interface?

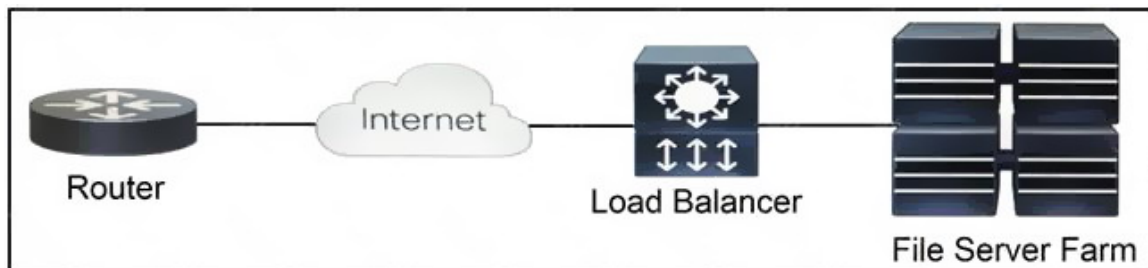
```
- name: Configure Interfaces
with_items: "{{interfaces}}"
netconf_config:
  <<: *host_info
  xml: |
    <config>
      <interfaces xmlns="urn:ietf:params:xml:ns:yang:ietf-interfaces">
        <interface>
          <name>{{item.interface_type}}{{item.interface_id}}</name>
          <description>{{item.description}}</description>
          <type xmlns:ianaift="urn:ietf:params:xml:ns:yang:iana-if-type">ianaift:ethernetCsmacd</type>
          <enabled>true</enabled>
          <ipv4 xmlns="urn:ietf:params:xml:ns:yang:ietf-ip">
            <address>
              <ip>{{item.ip_address}}</ip>
              <netmask>{{item.subnet_mask}}</netmask>
            </address>
          </ipv4>
        </interface>
      </interfaces>
    </config>
```

- A. ietf-interfaces and ietf-ip
- B. iana-if-type and ietf-interfaces
- C. ietf-ip and openconfig-interface
- D. ietf-ip and iana-if-type

Correct Answer: B

QUESTION 9

Refer to the exhibit. Which two functions are performed by the load balancer when it handles traffic originating from the Internet destined to an application hosted on the file server farm? (Choose two.)



- A. Terminate the TLS over the UDP connection from the router and originate an HTTPS connection to the selected server.
- B. Terminate the TLS over the UDP connection from the router and originate an HTTP connection to the selected server.
- C. Terminate the TLS over the TCP connection from the router and originate an HTTP connection to the selected server.
- D. Terminate the TLS over the TCP connection from the router and originate an HTTPS connection to the selected server.

[350-901 Exam Dumps](#) [350-901 PDF Dumps](#) [350-901 VCE Dumps](#) [350-901 Q&As](#)

<https://www.ensurepass.com/350-901.html>