

[Download Full Version 350-401 Exam Dumps \(Updated in Feb/2023\)](#)

Source MAC in the capture is VMWare, MAC is Cisco. Routers first check the TTL before any further process, subtract 1 at R1. Send to R2, subtract and you have ZERO. Discard packet and reply with ICMP Time Exceeded message from that point, don't even bother checking the Route table for further processing.

QUESTION 276

Which two characteristics define the Intent API provided by Cisco DNA Center? (Choose two.)

- A. northbound API
- B. business outcome oriented
- C. device-oriented
- D. southbound API
- E. procedural

Correct Answer: AB

Explanation:

The Intent API is a Northbound REST API that exposes specific capabilities of the Cisco DNA Center platform. The Intent API provides policy-based abstraction of business intent, allowing focus on an outcome rather than struggling with individual mechanisms steps.

QUESTION 277

Refer to the exhibit. Which two facts does the device output confirm? (Choose two.)

```
vlan503 - Group 1
State is Active
 1 state change, last state change 32w6d
Virtual IP address is 10.0.3.241
Active virtual MAC address is 0000.0c07.ac01
Local virtual MAC address is 0000.0c07.ac01 (v1 default)
Hello time 3 sec, hold time 10 sec
Next hello sent in 0.064 secs
Preemption enabled
Active router is local
Standby router is 10.0.3.242, priority 100 (expires in 10.624 sec)
Priority 110 (configured 110)
Group name is "hsrp-V1503-1" (default)
```

- A. The device sends unicast messages to its peers
- B. The device's HSRP group uses the virtual IP address 10.0.3.242
- C. The standby device is configured with the default HSRP priority.
- D. The device is using the default HSRP hello timer
- E. The device is configured with the default HSRP priority

Correct Answer: CD

QUESTION 278

An engineer has deployed a single Cisco 5520 WLC with a management IP address of 172.16.50.5/24. The engineer must register 50 new Cisco AIR-CAP2802I-E-K9 access points to the WLC using DHCP option 43. The access points are connected to a switch in VLAN 100 that uses the 172.16.100.0/24 subnet. The engineer has configured the DHCP scope on the switch as follows:

```
Network 172.16.100.0 255.255.255.0
Default Router 172.16.100.1
Option 43 Ascii 172.16.50.5
```

[Download Full Version 350-401 Exam Dumps \(Updated in Feb/2023\)](#)

The access points are failing to join the wireless LAN controller. Which action resolves the issue?

- A. configure option 43 Hex F104.AC10.3205
- B. configure option 43 Hex F104.CA10.3205
- C. configure dns-server 172.16.50.5
- D. configure dns-server 172.16.100.1

Correct Answer: A

Explanation:

The Option 43 hexadecimal string is assembled as a sequence of the TLV values for the Option 43 suboption: Type + Length + Value. Type is always the suboption code 0xf1. Length is the number of controller management IP addresses times 4 in hex. Value is the IP address of the controller listed sequentially in hex.

On this question, there is 1 controller with management interface IP addresses 172.16.50.5/24. The type is 0xf1. The length is $1 * 4 = 8 = 0x04$. The mgmt IP addresses 172.16.50.5 translate to ac.10.32.05 (0xac103205). When the string is assembled, it yields f108c0a80a05c0a80a14. The Cisco IOS command that is added to the DHCP scope is: option 43 hex f104ac103205

QUESTION 279

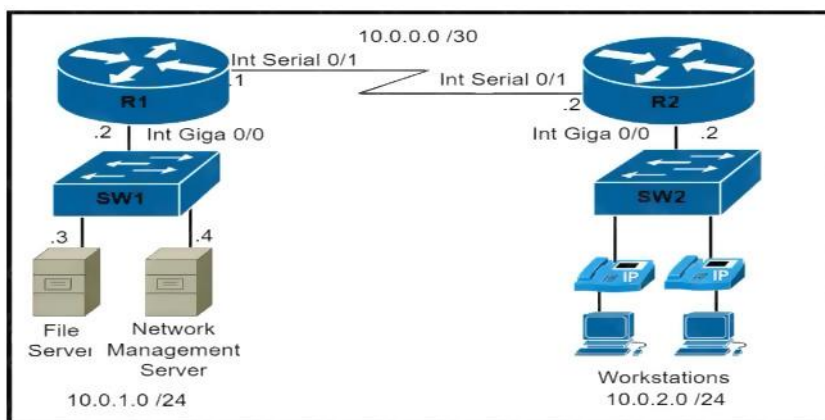
An engineer configures HSRP group 37. The configuration does not modify the default virtual MAC address. Which virtual MAC address does the group use?

- A. C0:00:00:25:00:00
- B. 00:00:0c:07:ac:37
- C. C0:39:83:25:258:5
- D. 00:00:0c:07:ac:25

Correct Answer: D

QUESTION 280

Refer to the exhibit. An engineer must configure and validate a CoPP policy that allows the network management server to monitor router R1 via SNMP while protecting the control plane. Which two commands or command sets must be used? (Choose two.)



- A. show quality-of-service-profile
- B. show ip interface brief

[Download Full Version 350-401 Exam Dumps \(Updated in Feb/2023\)](#)

- C. `access-list 150 permit udp 10.0.1.4 0.0.0.0 host 10.0.1.2 eq snmp`
`class-map match-all CoPP-management`
`match access-group 150`
`policy-map CoPP-policy`
`class CoPP-management`
`police 8000 conform-action transmit exceed-action transmit`
`violate-action transmit`
`control-plane`
`Service-policy input CoPP-policy`
- D. `show policy-map control-plane`
- E. `access-list 150 permit udp 10.0.1.4 0.0.0.0 host 10.0.1.2 eq snmp`
`access-list 150 permit udp 10.0.1.4 0.0.0.0 eq snmp host 10.0.1.2`
`class-map match-all CoPP-management`
`match access-group 150`
`policy-map CoPP-policy`
`class CoPP-management`
`police 8000 conform-action transmit exceed-action transmit`
`violate-action drop`
`control-plane`
`Service-policy input CoPP-policy`

Correct Answer: CD

QUESTION 281

Which data is properly formatted with JSON?

- A.

```
{
  "name": "Peter",
  "age": "25",
  "likesJson": true,
  "characteristics": ["small", "strong", 18]
}
```
- B.

```
{
  "name": "Peter",
  "age": "25",
  "likesJson": true,
  "characteristics": ["small", "strong", "18"],
}
```
- C.

```
{
  "name": "Peter"
  "age": "25"
  "likesJson": true
  "characteristics": ["small", "strong", 18]
}
```
- D.

```
{
  "name": Peter,
  "age": 25,
  "likesJson": true,
  "characteristics": ["small", "strong", "18"],
}
```

Correct Answer: A

QUESTION 282

In an SD-Access solution what is the role of a fabric edge node?

- A. to connect external Layer 3- network to the SD-Access fabric
- B. to connect wired endpoint to the SD-Access fabric
- C. to advertise fabric IP address space to external network
- D. to connect the fusion router to the SD-Access fabric

Correct Answer: B

Explanation:

Fabric edge node: This fabric device (for example, access or distribution layer device) connects

QUESTION 283

Refer to the exhibit. Router BRDR-1 is configured to receive the 0.0.0.0/0 and 172.17.1.0/24 network via BGP and advertise them into OSPF area 0. An engineer has noticed that the OSPF domain is receiving only the 172.17.1.0/24 route and default route 0.0.0.0/0 is still missing. Which configuring must engineer apply to resolve the problem?

```
RP/0/0/CP00:BRDR-1#show route ipv4 0.0.0.0
Routing entry for 0.0.0.0/0
  Known via "bgp 65001", distance 20, metric 0, candidate default path
  Tag 65002, type external
  Installed Jan  2 08:40:59.889 for 00:01:18
  Routing Descriptor Blocks
    100.65.19.1, from 100.65.19.1, BGP external
    Route metric is 0
  No advertising protos.

RP/0/0/CP00:BRDR-1#show run router ospf
router ospf 1
 redistribute bgp 65001 route-policy BGP-TO-OSPF
 area 0
  mpis traffic-eng
  interface Loopback0
  interface GigabitEthernet0/0/0.92
  interface GigabitEthernet0/0/0.3132
  mpis traffic-eng router-id Loopback0

RP/0/0/CP00:BRDR-1#show rpl route-policy BGP-TO-OSPF
route-policy BGP-TO-OSPF
 if destination in (0.0.0.0/0) then
  set metric-type type-1
 endif
 set metric-type type-2
 set ospf-metric 100
end-policy
```

- router ospf 1
default-information originate always
end
- router ospf 1
redistribute bgp 65001 metric 100 route-policy BGP-TO-OSPF
end
- router ospf 1
default-metric 100
end
- router ospf 1
default-information originate
end

- A. Option A
- B. Option B
- C. Option C
- D. Option D

Correct Answer: D

QUESTION 284

Where in Cisco DNA Center is documentation of each API call, organized by its functional area?

- A. Developer Toolkit
- B. platform management
- C. platform bundles
- D. Runtime Dashboard

Correct Answer: A

QUESTION 285

In which two ways does TCAM differ from CAM? (Choose two.)

- A. CAM is used to make Layer 2 forwarding decisions, and TCAM is used for Layer 3 address lookups.
- B. The MAC address table is contained in CAM, and ACL and QoS Information is stored in TCAM.
- C. CAM is used by routers for IP address lookups, and TCAM is used to make Layer 2 forwarding decisions.
- D. CAM is used for software switching mechanisms, and TCAM is used for hardware switching mechanisms.
- E. The MAC address table is contained in TCAM, and ACL and QoS information is stored in CAM.

Correct Answer: CE

QUESTION 286

Which two components are supported by LISP? (Choose two.)

- A. Proxy ETR
- B. egress tunnel router
- C. route reflector
- D. HMAC algorithm
- E. spoke

Correct Answer: AB

QUESTION 287

Which benefit is provided by the Cisco DNA Center telemetry feature?

- A. provides improved network security
- B. inventories network devices
- C. aids in the deployment network configurations
- D. improves the user experience

Correct Answer: B