

[Download Full Version 350-401 Exam Dumps \(Updated in Feb/2023\)](#)

to help prevent packets containing malicious content from entering the network.

QUESTION 257

Refer to the exhibit. An engineer must modify the access control list EGRESS to allow all IP traffic from subnet 10.1.10.0/24 to 10.1.2.0/24. The access control list is applied in the outbound direction on router interface GigabitEthernet 0/1. Which configuration commands can the engineer use to allow this traffic without disrupting existing traffic flows?

```
Extended IP access list EGRESS
10 permit ip 10.1.100.0 0.0.0.255 10.1.2.0 0.0.0.255
20 deny ip any any
```

- A.

```
config t
ip access-list extended EGRESS
permit ip 10.1.10.0 255.255.255.0 10.1.2.0 255.255.255.0
```
- B.

```
config t
ip access-list extended EGRESS
5 permit ip 10.1.10.0 0.0.0.255 10.1.2.0 0.0.0.255
```
- C.

```
config t
ip access-list extended EGRESS2
permit ip 10.1.10.0 0.0.0.255 10.1.2.0 0.0.0.255
permit ip 10.1.100.0 0.0.0.255 10.1.2.0 0.0.0.255
deny ip any any
!
interface g0/1
no ip access-group EGRESS out
ip access-group EGRESS2 out
```
- D.

```
config t
ip access-list extended EGRESS
permit ip 10.1.10.0 0.0.0.255 10.1.2.0 0.0.0.255
```

Correct Answer: B

QUESTION 258

DRAG DROP

Refer to the exhibit. Drag and drop the snippets into the RESTCONF request to form the request that returns this response Not all options are used.

```
{
  "Cisco-IOS-XE-native GigabitEthernet": {
    "name": "1",
    "vrf": {
      "forwarding": "MANAGEMENT"
    },
    "ip": {
      "address": {
        "primary": {
          "address": "10.0.0.151",
          "mask": "255.255.255.0"
        }
      }
    },
    "mop": {
      "enabled": false
    },
    "Cisco-IOS-XE-ethernet negotiation": {
      "auto": true
    }
  }
}
```

[Download Full Version 350-401 Exam Dumps \(Updated in Feb/2023\)](#)

URL - http://10.10.10.10/restconf/api/running/native/ []
HTTP Verb- []
Body- N/A
Headers- []-application/vnd.yang.data+json
Authentication-privileged level 15 credentials

POST	Accept	Cisco-IOS-XE
interface/GigabitEthernet/1/	GET	PUT

Correct Answer:

URL - http://10.10.10.10/restconf/api/running/native/ interface/GigabitEthernet/1/
HTTP Verb- GET
Body- N/A
Headers- Accept -application/vnd.yang.data+json
Authentication-privileged level 15 credentials

POST	Accept	Cisco-IOS-XE
interface/GigabitEthernet/1/	GET	PUT

QUESTION 259

What is the API keys option for REST API authentication?

- A. a predetermined string that is passed from client to server
- B. a one-time encrypted token
- C. a username that is stored in the local router database
- D. a credential that is transmitted unencrypted

Correct Answer: A

QUESTION 260

A customer wants to provide wireless access to contractors using a guest portal on Cisco ISE. The portal is also used by employees. A solution is implemented, but contractors receive a certificate error when they attempt to access the portal. Employees can access the portal without any errors. Which change must be implemented to allow the contractors and employees to access the portal?

- A. Install a trusted third-party certificate on the Cisco ISE.
- B. Install an Internal CA signed certificate on the contractor devices
- C. Install an internal CA signed certificate on the Cisco ISE
- D. install a trusted third-party certificate on the contractor devices.

Correct Answer: A

QUESTION 261

Refer to the exhibit. An engineer must set up connectivity between a campus aggregation layer and a branch office access layer. The engineer uses dynamic trunking protocol to establish this connection, however, management traffic on VLAN1 is not passing. Which action resolves the issue and allow communication for all configured VLANs?

```
SW2#
*CDP-4-NATIVE_VLAN_MISMATCH: Native VLAN mismatch discovered on
GigabitEthernet0/1 (1), with SW1 GigabitEthernet 0/1 (30).
SW2#
```

- A. Allow all VLANs on the trunk links
- B. Disable Spanning Tree for the native VLAN.
- C. Configure the correct native VLAN on the remote interface
- D. Change both interfaces to access ports.

Correct Answer: C

QUESTION 262

A network administrator is implementing a routing configuration change and enables routing debugs to track routing behavior during the change. The logging output on the terminal is interrupting the command typing process. Which two actions can the network administrator take to minimize the possibility of typing commands incorrectly? (Choose two.)

- A. Configure the logging synchronous global configuration command
- B. Configure the logging delimiter feature
- C. Configure the logging synchronous command under the vty
- D. Press the TAB key to reprint the command in a new line
- E. increase the number of lines on the screen using the terminal length command

Correct Answer: CD

QUESTION 263

Which entity is responsible for maintaining Layer 2 isolation between segments in a VXLAN environment?

- A. switch fabric
- B. VTEP
- C. VNID
- D. host switch

Correct Answer: C

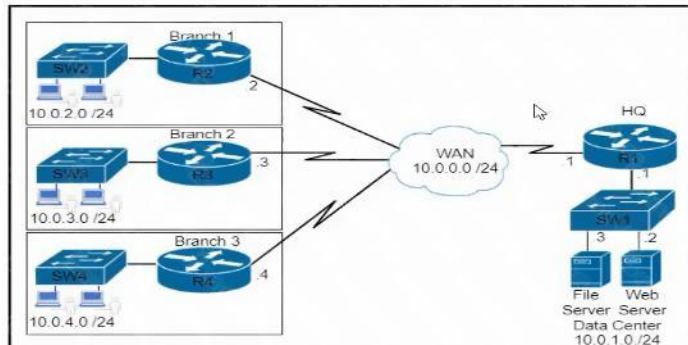
Explanation:

The 24-bit VNID is used to identify Layer 2 segments and to maintain Layer 2 isolation between the segments.

VXLAN uses an 8-byte VXLAN header that consists of a 24-bit VNID and a few reserved bits. The VXLAN header together with the original Ethernet frame goes in the UDP payload. The 24-bit VNID is used to identify Layer 2 segments and to maintain Layer 2 isolation between the segments.

QUESTION 264

Refer to the exhibit. Which command set is needed to configure and verify router R3 to measure the response time from router R3 to the file server located in the data center?



- A.

```
ip sla 6
icmp-echo 10.0.1.3 source-ip 10.0.0.3
frequency 300
ip sla schedule 6 life forever start-time now
show ip sla statistics 6
```
- B.

```
ip sla 6
icmp-echo 172.29.139.134 source-ip 172.29.139.132
frequency 300
ip sla schedule 6 start-time now
```
- C.

```
ip sla 6
icmp-echo 172.29.139.134 source-ip 172.29.139.132
frequency 300
ip sla schedule 6 start-time now
show ip protocol
```
- D.

```
ip sla 6
icmp-echo 10.0.1.3 source-ip 10.0.0.3
frequency 300
ip sla schedule 6 life forever start-time now
show ip protocol
```

Correct Answer: A

Explanation:

<https://www.cisco.com/c/en/us/support/docs/smb/switches/cisco-550x-series-stackable-managed-switches/smb5797-configure-ip-sla-tracking-for-ipv4-static-routes-on-an-sg550.html>

QUESTION 265

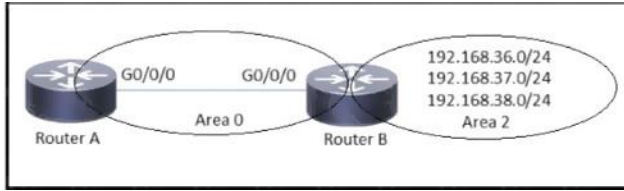
What is a characteristics of traffic policing?

- A. lacks support for marking or remarking
- B. must be applied only to outgoing traffic
- C. can be applied in both traffic directions
- D. queues out-of-profile packets until the buffer is full

Correct Answer: D

QUESTION 266

Refer to the exhibit. Which configuration is required to summarize the Area 2 networks that are advertised to Area 0?



- RouterB(config)# router ospf 1
RouterB(config-router)# network 192.168.38.0 255.255.252.0
- RouterB(config)# router ospf 1
RouterB(config-router)# network 192.168.38.0 255.255.255.0
- RouterB(config)# router ospf 1
RouterB(config-router)# area 2 range 192.168.36.0 255.255.252.0
- RouterB(config)# router ospf 1
RouterB(config-router)# area 2 range 192.168.36.0 255.255.255.0

- A. Option A
- B. Option B
- C. Option C
- D. Option D

Correct Answer: C

QUESTION 267

"HTTP/1.1 204 content" is returned when cur -I -x delete command is issued. Which situation has occurred?

- A. The object could not be located at the URI path.
- B. The command succeeded in deleting the object.
- C. The object was located at the URI, but it could not be deleted.
- D. The URI was invalid.

Correct Answer: B

Explanation:

HTTP Status 204 (No Content) indicates that the server has successfully fulfilled the request and that there is no content to send in the response payload body.

QUESTION 268

DRAG DROP

Drag and drop the automation characteristics from the left onto the appropriate tools on the right.

provides intent-based networking feedback loop	Ansible
agent or agentless automation platform	
agentless automation platform	Puppet
assesses the impact of changes before applied	

Correct Answer: