

[Download Full Version 350-401 Exam Dumps \(Updated in Feb/2023\)](#)

Cisco DNA Center allows customers to manage their non-Cisco devices through the use of a Software Development Kit (SDK) that can be used to create Device Packages for third-party devices.

QUESTION 207

Which design principle states that a user has no access by default to any resource, and unless a resource is explicitly granted, it should be denied?

- A. least privilege
- B. fail-safe defaults
- C. economy of mechanism
- D. complete mediation

Correct Answer: B

QUESTION 208

A company requires a wireless solution to support its main office and multiple branch locations. All sites have local Internet connections and a link to the main office for corporate connectivity. The branch offices are managed centrally. Which solution should the company choose?

- A. Cisco Unified Wireless Network
- B. Cisco DNA Spaces
- C. Cisco Catalyst switch with embedded controller
- D. Cisco Mobility Express

Correct Answer: B

QUESTION 209

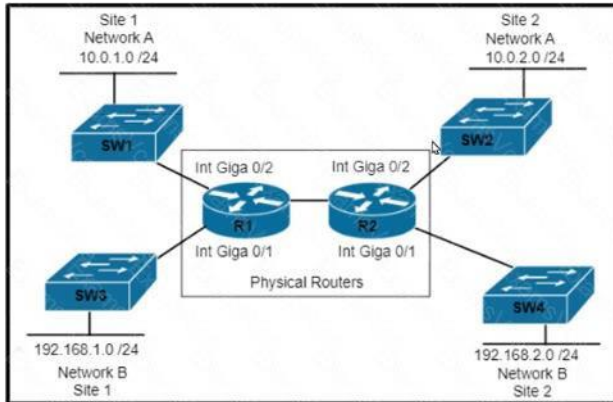
Which VXLAN component is used to encapsulate and decapsulate Ethernet frames?

- A. VNI
- B. GRE
- C. VTEP
- D. D.EVPN

Correct Answer: C

QUESTION 210

Refer to the exhibit. Which set of commands is required to configure and verify the VRF for Site 1 Network A on router R1?



```
R1#ip routing
R1(config)#ip vrf 100
!
R1(config)#interface Gi0/2
R1(config-if)#ip address 10.0.1.1 255.255.255.0

R1#show ip route

R1#ip routing
R1(config)#ip vrf 100
R1(config-vrf)#rd 100:1
R1(config-vrf)# address family ipv4
!
R1(config)#interface Gi0/2
R1(config-if)#ip address 10.0.1.1 255.255.255.0

R1#show ip route

R1#ip routing
R1(config)#ip vrf 100
!
R1(config)#interface Gi0/2
R1(config-if)#ip address 10.0.1.1 255.255.255.0

R1#show ip vrf

R1#ip routing
R1(config)#ip vrf 100
!
R1(config)#interface Gi0/2
R1(config-if)#ip vrf forwarding 100
R1(config-if)#ip address 10.0.1.1 255.255.255.0

R1#show ip vrf
```

- A. Option A
- B. Option B
- C. Option C
- D. Option D

Correct Answer: D

QUESTION 211

Which technology does VXLAN use to provide segmentation for Layer 2 and Layer 3 traffic?

- A. bridge domain
- B. VLAN
- C. VRF
- D. VNI

Correct Answer: D

Explanation:

VXLAN has a 24-bit VXLAN network identifier (VNI), which allows for up to 16 million (= 2²⁴) VXLAN segments to coexist within the same infrastructure. This surely solve the small number of traditional VLANs.

QUESTION 212

Why would a log file contain a * next to the date?

- A. The network device was receiving NTP time when the log messages were recorded.
- B. The network device was unable to reach The NTP server when the log messages were recorded
- C. The network device is not configured to use NTP.
- D. The network device is nor configured to use NTP time stamps for logging

Correct Answer: A

QUESTION 213

DRAG DROP

Drag and drop the characteristics from the left onto the protocols they apply to on the right?

Characteristics (Left):

- uses Dijkstra's Shortest Path First algorithm
- uses Diffused Update Algorithm
- uses bandwidth, delay, reliability, and load for routing metric
- uses an election process

Protocols (Right):

- OSPF
- EIGRP

Correct Answer:

Characteristics (Left):

- uses Dijkstra's Shortest Path First algorithm
- uses Diffused Update Algorithm
- uses bandwidth, delay, reliability, and load for routing metric
- uses an election process

Protocols (Right):

- OSPF
 - uses Dijkstra's Shortest Path First algorithm
 - uses an election process
- EIGRP
 - uses Diffused Update Algorithm
 - uses bandwidth, delay, reliability, and load for routing metric

QUESTION 214

What is used to perform OoS packet classification?

- A. the Options field in the Layer 3 header
- B. the Type field in the Layer 2 frame
- C. the Flags field in the Layer 3 header
- D. the TOS field in the Layer 3 header

Correct Answer: D

Explanation:

Type of service, when we talk about PACKET, means layer 3.

QUESTION 215

Refer to the exhibit. An engineer is troubleshooting a connectivity issue and executes a traceoute. What does the result confirm?

```
Router# traceroute 10.10.10.1
Type escape sequence to abort.
Tracing the route to 10.10.10.1
 0 10.0.0.1  5 msec  5 msec  5 msec
 1 10.5.0.1  15 msec 17 msec 17 msec
 2 10.10.10.1 =     =     =
```

- A. The destination server reported it is too busy
- B. The protocol is unreachable
- C. The destination port is unreachable
- D. The probe timed out

Correct Answer: D

Explanation:

In Cisco routers, the codes for a traceroute command reply are:

! - success* - time outN - network unreachableH - host unreachableP - protocol unreachableA - admin deniedQ - source quench received (congestion)? - unknown (any other ICMP message)

In Cisco routers, the codes for a traceroute command reply are:

! - success* - time outN - network unreachableH - host unreachableP - protocol unreachableA - admin deniedQ - source quench received (congestion)? - unknown (any other ICMP message)

QUESTION 216

A network administrator is preparing a Python scrip to configure a Cisco IOS XE-based device on the network. The administrator is worried that colleagues will make changes to the device while the script is running. Which operation of he in client manager prevent colleague making changes to the device while the scrip is running?

- A. m.lock(config='running')
- B. m.lock(target='running')
- C. m.freeze(target='running')
- D. m.freeze(config='running')

Correct Answer: B

QUESTION 217

Which AP mode allows an engineer to scan configured channels for rogue access points?

- A. sniffer
- B. monitor
- C. bridge
- D. local

Correct Answer: B

QUESTION 218

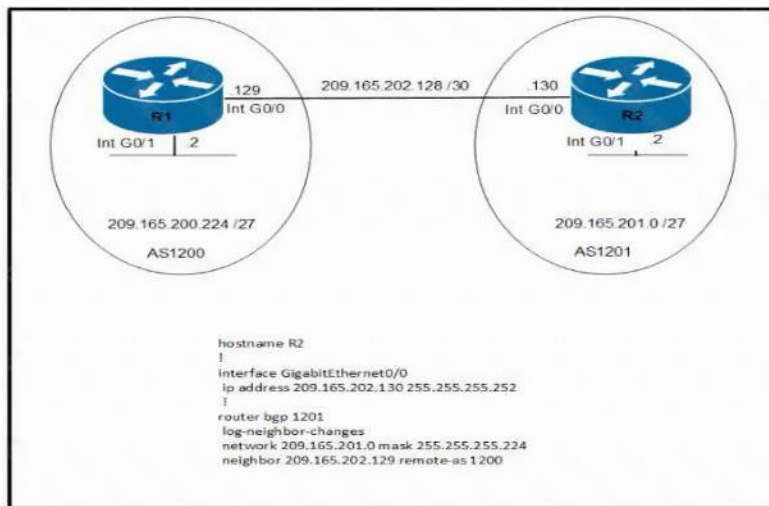
What is the function of a control-plane node in a Cisco SD-Access solution?

- A. to run a mapping system that manages endpoint to network device relationships
- B. to implement policies and communicate with networks outside the fabric
- C. to connect external Layer 3 networks to the SD-Access fabric
- D. to connect APs and wireless endpoints to the SD-Access fabric

Correct Answer: A

QUESTION 219

Refer to the exhibit. Which command set must be applied on R1 to establish a BGP neighborhood with R2 and to allow communication from R1 to reach the networks?



- A.

```
router bgp 1200
network 209.165.201.0 mask 255.255.255.224
neighbor 209.165.202.130 remote-as 1201
```
- B.

```
router bgp 1200
network 209.165.200.224 mask 255.255.255.224
neighbor 209.165.201.2 remote-as 1200
```
- C.

```
router bgp 1200
network 209.165.200.224 mask 255.255.255.224
neighbor 209.165.202.130 remote-as 1201
```
- D.

```
router bgp 1200
network 209.165.200.224 mask 255.255.255.224
```

Correct Answer: C

QUESTION 220

Which configuration creates a CoPP policy that provides unlimited SSH access from client 10.0.0.5 and denies access from all other SSH clients'?