

[Download Full Version 350-401 Exam Dumps \(Updated in Feb/2023\)](#)

```
<config xmlns:xm="urn:ietf:params:xml:ns:netconf:base:1.0" xmlns="urn:ietf:params:xml:ns:netconf:base:1.0">
<native xmlns="http://cisco.com/ns/yang/Cisco-IOS-XE-native" xmlns:ios-bgp="http://cisco.com/ns/yang/Cisco-IOS-XE-bgp">
<router>
<ios-bgp:bgp>
<ios-bgp:address-family>
<ios-bgp:no-vrf>
<ios-bgp:ipv4>
<ios-bgp:af-name>unicast</ios-bgp:af-name>
<ios-bgp:ipv4-unicast>
<ios-bgp:network>
<ios-bgp:with-mask>
<ios-bgp:number>
<ios-bgp:with-mask>
</ios-bgp:with-mask>
</ios-bgp:network>
</ios-bgp:ipv4-unicast>
</ios-bgp:ipv4>
</ios-bgp:no-vrf>
</ios-bgp:address-family>
</ios-bgp:bgp>
</router>
</native>
</config>
```

192.168.5.0 255.255.255.0 with-mask mask subnet-mask

Correct Answer:

```
<config xmlns:xm="urn:ietf:params:xml:ns:netconf:base:1.0" xmlns="urn:ietf:params:xml:ns:netconf:base:1.0">
<native xmlns="http://cisco.com/ns/yang/Cisco-IOS-XE-native" xmlns:ios-bgp="http://cisco.com/ns/yang/Cisco-IOS-XE-bgp">
<router>
<ios-bgp:bgp>
<ios-bgp:address-family>
<ios-bgp:no-vrf>
<ios-bgp:ipv4>
<ios-bgp:af-name>unicast</ios-bgp:af-name>
<ios-bgp:ipv4-unicast>
<ios-bgp:network>
<ios-bgp:with-mask>
<ios-bgp:number> 192.168.5.0 </ios-bgp:number>
<ios-bgp:with-mask> mask </ios-bgp:with-mask>
</ios-bgp:network>
</ios-bgp:ipv4-unicast>
</ios-bgp:ipv4>
</ios-bgp:no-vrf>
</ios-bgp:address-family>
</ios-bgp:bgp>
</router>
</native>
</config>
```

192.168.5.0 255.255.255.0 with-mask mask subnet-mask

QUESTION 148

Based on the router's API output in JSON format below, which Python code will display the value of the 'role' key?

```
{
  "response": [
    {
      "family": "Routers",
      "macAddress": "00:c8:8b:80:bb:00",
      "hostname": "BorderA",
      "role": "BORDER ROUTER",
      "lastUpdateTime": "1577420167054",
      "serialNumber": "FXS8799Q1SE",
      "softwareVersion": "16.3.2",
      "upTime": "5 days, 9:22:32:17",
      "lastUpdated": "2021-03-05 23:30:37"
    }
  ]
}
```

json_data = json.loads(response.text)
print(json_data["response"]["family"]["role"])

json_data = response.json()
print(json_data["response"]["family"]["role"])

json_data = json.loads(response.text)
print(json_data["response"][0]["role"])

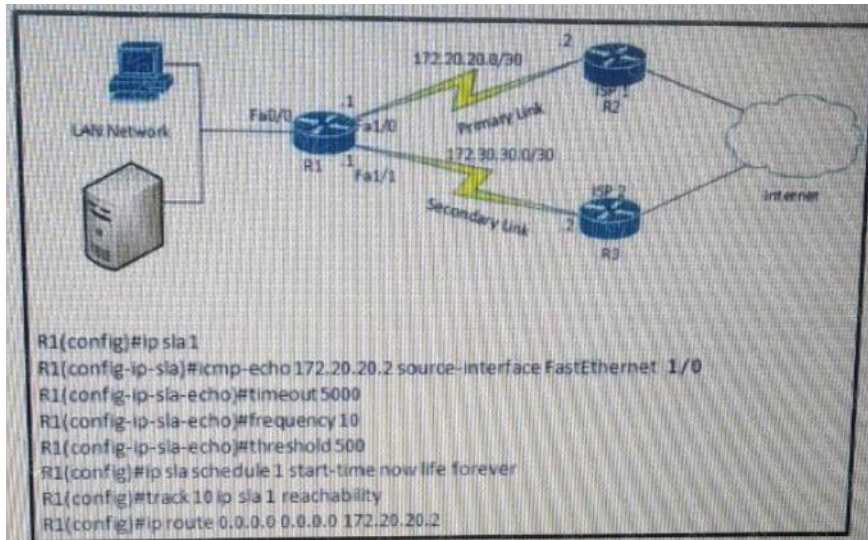
json_data = response.json()
print(json_data["response"][0]["role"])

- A. Option A
- B. Option B
- C. Option C
- D. Option D

Correct Answer: C

QUESTION 149

Refer to the exhibit. After implementing the configuration 172.20.20.2 stops replying to ICMP echoes, but the default route fails to be removed. What is the reason for this behavior?



- A. The source-interface is configured incorrectly.
- B. The destination must be 172.30.30.2 for icmp-echo
- C. The default route is missing the track feature
- D. The threshold value is wrong.

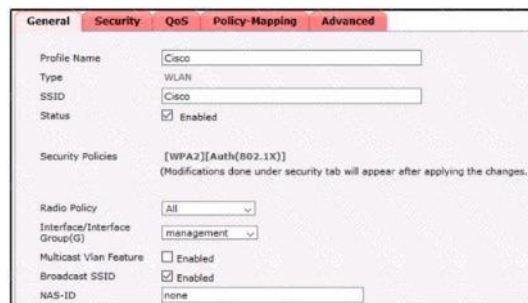
Correct Answer: C

Explanation:

The last command should be "R1(config)#ip route 0.0.0.0 0.0.0.0 172.20.20.2 track 10".

QUESTION 150

Refer to the exhibit. Clients report that they cannot connect to this SSID using the provided PSK. Which action will resolve this issue?



- A. Apply the correct interface to this WLAN.
- B. Apply the changes this SSID.
- C. Select the PSK under authentication key management.
- D. Define the correct Radio Policy.

Correct Answer: A

QUESTION 151

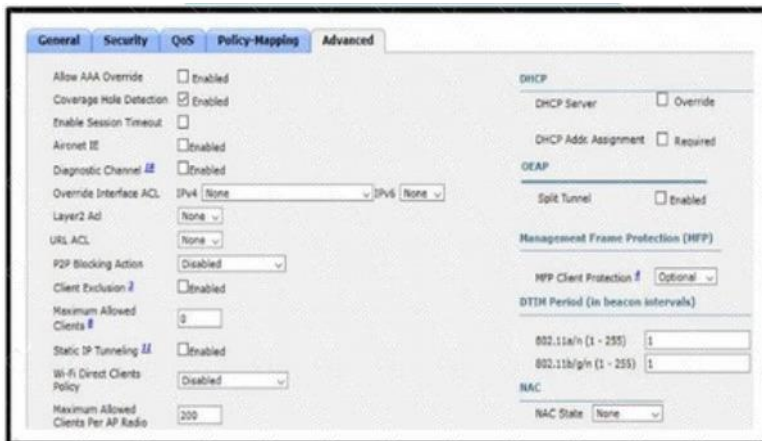
Which benefit is offered by a cloud infrastructure deployment but is lacking in an on-premises deployment?

- A. efficient scalability
- B. virtualization
- C. storage capacity
- D. supported systems

Correct Answer: A

QUESTION 152

Refer to the exhibit. An engineer has configured Cisco ISE to assign VLANs to clients based on their method of authentication, but this is not working as expected. Which action will resolve this issue?



- A. require a DHCP address assignment
- B. utilize RADIUS profiling
- C. set a NAC state
- D. enable AAA override

Correct Answer: B

QUESTION 153

Which function does a fabric edge node perform in an SD-Access deployment?

- A. Connects the SD-Access fabric to another fabric or external Layer 3 networks
- B. Connects endpoints to the fabric and forwards their traffic
- C. Provides reachability border nodes in the fabric underlay
- D. Encapsulates end-user data traffic into LISP.

Correct Answer: B

Explanation:

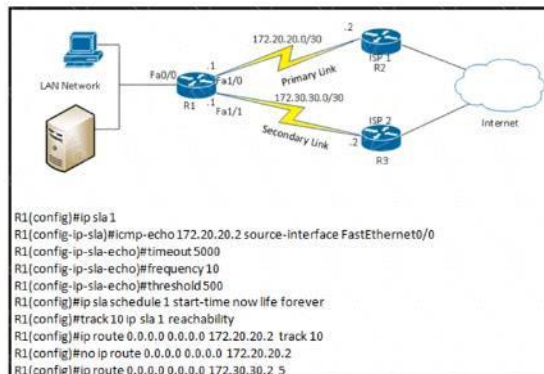
There are five basic device roles in the fabric overlay:

[Download Full Version 350-401 Exam Dumps \(Updated in Feb/2023\)](#)

- Control plane node: This node contains the settings, protocols, and mapping tables to provide the endpoint-to-location (EID-to-RLOC) mapping system for the fabric overlay.
- Fabric border node: This fabric device (for example, core layer device) connects external Layer 3 networks to the SDA fabric.
- Fabric edge node: This fabric device (for example, access or distribution layer device) connects wired endpoints to the SDA fabric.
- Fabric WLAN controller (WLC): This fabric device connects APs and wireless endpoints to the SDA fabric.
- Intermediate nodes: These are intermediate routers or extended switches that do not provide any sort of SD-Access fabric role other than underlay services.

QUESTION 154

Refer to the exhibit. What are two reasons for IP SLA tracking failure? (Choose two)



- A. The destination must be 172 30 30 2 for icmp-echo
- B. A route back to the R1 LAN network is missing in R2.
- C. The source-interface is configured incorrectly.
- D. The default route has the wrong next hop IP address
- E. The threshold value is wrong

Correct Answer: BE

QUESTION 155

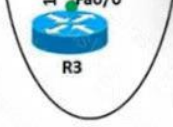
Which two methods are used to reduce the AP coverage area? (Choose two)

- A. Reduce channel width from 40 MHz to 20 MHz
- B. Disable 2.4 GHz and use only 5 GHz.
- C. Reduce AP transmit power.
- D. Increase minimum mandatory data rate
- E. Enable Fastlane

Correct Answer: CD

QUESTION 156

Refer to the exhibit. An engineer configures the BGP adjacency between R1 and R2, however, it fails to establish. Which action resolves the issue?



```
Router R1
router bgp 5500
no synchronization
bgp router-id 10.10.10.10
bgp log-neighbor-changes
network 192.168.100.0
redistribute connected
neighbor 172.16.10.2 remote-as 5500
neighbor 172.16.10.2 soft-reconfiguration inbound
neighbor 192.168.100.11 remote-as 5500
no auto-summary
!
address-family vpnv4
neighbor 172.16.10.2 activate
neighbor 172.16.10.2 send-community both
exit-address-family
!

Router R2
router bgp 6500
no synchronization
bgp router-id 20.20.20.20
bgp log-neighbor-changes
neighbor 172.16.10.1 remote-as 5500
no auto-summary
!
!
address-family vpnv4
neighbor 172.16.10.1 activate
neighbor 172.16.10.1 send-community both
exit-address-family
!
address-family ipv4 vrf WAN
redistribute connected
redistribute static
neighbor 172.16.10.1 remote-as 5500
neighbor 172.16.10.1 activate
no synchronization
exit-address-family
```

- A. Change the network statement on R1 to 172.16.10.0
- B. Change the remote-as number for 192.168.100.11.
- C. Enable synchronization on R1 and R2
- D. Change the remote-as number on R1 to 6500.

Correct Answer: D

QUESTION 157

When firewall capabilities are considered, which feature is found only in Cisco next-generation firewalls?

- A. malware protection
- B. stateful inspection
- C. traffic filtering
- D. active/standby high availability

Correct Answer: A

QUESTION 158

What is a fact about Cisco EAP-FAST?

- A. It does not require a RADIUS server certificate.
- B. It requires a client certificate.
- C. It is an IETF standard.
- D. It operates in transparent mode.

Correct Answer: A