

### QUESTION 107

Refer to the exhibit. A network engineer checks connectivity between two routers. The engineer can ping the remote endpoint but cannot see an ARP entry. Why is there no ARP entry?

```
R1#show ip interface brief | include 192.168.12
FastEthernet0/0 192.168.12.1 YES manual up

R1#ping vrf CUST-A 192.168.12.2
Type escape sequence to abort.
Sending 5, 100-byte ICMP Echos to 192.168.12.2, timeout is 2 seconds:
!!!!
Success rate is 100 percent (5/5), round-trip min/avg/max = 1/1/1 ms

R1#show ip arp 192.168.12.2
R1#
```

- A. The ping command must be executed in the global routing table.
- B. Interface FastEthernet0/0 is configured in VRF CUST-A, so the ARP entry is also in that VRF.
- C. When VRFs are used, ARP protocol must be enabled in each VRF.
- D. When VRFs are used, ARP protocol is disabled in the global routing table.

**Correct Answer: B**

### QUESTION 108

In a Cisco SD-WAN solution, which two functions are performed by OMP? (Choose two.)

- A. advertisement of network prefixes and their attributes
- B. configuration of control and data policies
- C. gathering of underlay infrastructure data
- D. delivery of crypto keys
- E. segmentation and differentiation of traffic

**Correct Answer: AB**

#### Explanation:

OMP is the control protocol that is used to exchange routing, policy, and management information between Cisco vSmart Controllers and Cisco IOS XE SD-WAN devices in the overlay network. These devices automatically initiate OMP peering sessions between themselves, and the two IP end points of the OMP session are the system IP addresses of the two devices.

### QUESTION 109

Refer to the exhibit. An engineer configures OSPF and wants to verify the configuration. Which configuration is applied to this device?

```
Hello due in 00:00:07
Supports Link-local Signaling (LLS)
Cisco NSF helper support enabled
IETF NSF helper support enabled
Index 1/2/2, flood queue length 0
Next 0x0(0)/0x0(0)/0x0(0)
Last flood scan length is 0, maximum is 0
Last flood scan time is 1 msec, maximum is 1 msec
Neighbor Count is 0, Adjacent neighbor count is 0
Suppress hello for 0 neighbor(s)
```

- A. R1(config)#router ospf 1  
R1(config-router)#network 192.168.50.0 0.0.0.255 area 0
- B. R1(config)#router ospf 1  
R1(config-router)#network 0.0.0.0 0.0.0.0 area 0  
R1(config-router)#no passive-interface Gi0/1
- C. R1(config)#interface Gi0/1  
R1(config-if)#ip ospf enable  
R1(config-if)#ip ospf network broadcast  
R1(config-if)#no shutdown
- D. R1(config)#interface Gi0/1  
R1(config-if)#ip ospf 1 area 0  
R1(config-if)#no shutdown

**Correct Answer: C**

#### QUESTION 110

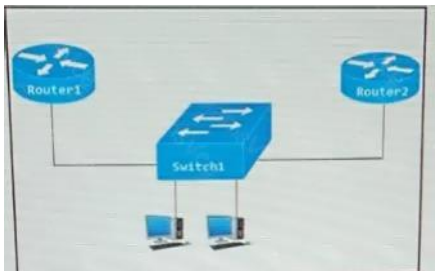
What is one fact about Cisco SD-Access wireless network deployments?

- A. The access point is part of the fabric underlay
- B. The WLC is part of the fabric underlay
- C. The access point is part the fabric overlay
- D. The wireless client is part of the fabric overlay

**Correct Answer: C**

#### QUESTION 111

Refer to the exhibit. Router 1 is currently operating as the HSRP primary with a priority of 110. Router 1 fails and Router 2 takes over the forwarding role. Which command on Router 1 causes it to take over the forwarding role when it returns to service?



- A. standby 2 priority
- B. standby 2 preempt
- C. standby 2 track
- D. standby 2 timers

**Correct Answer: B**

**QUESTION 112**

A customer requests a network design that supports these requirements:

- FHRP redundancy
- multivendor router environment
- IPv4 and IPv6 hosts

Which protocol does the design include?

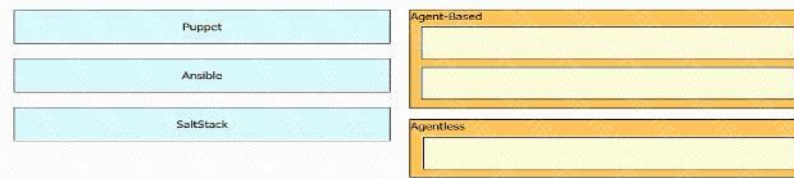
- A. HSRP version 2
- B. VRRP version 2
- C. GLBP
- D. VRRP version 3

**Correct Answer: D**

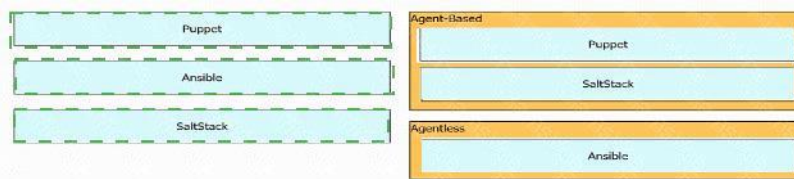
**QUESTION 113**

DRAG DROP

Drag and drop the tools from the left onto the agent types on the right.



**Correct Answer:**



**QUESTION 114**

When using BFD in a network design, which consideration must be made?

- A. BFD is used with first hop routing protocols to provide subsecond convergence.
- B. BFD is more CPU-intensive than using reduced hold timers with routing protocols.
- C. BFD is used with dynamic routing protocols to provide subsecond convergence.
- D. BFD is used with NSF and graceful to provide subsecond convergence.

**Correct Answer: C**

**QUESTION 115**

Refer to the exhibit. A network administrator configured RSPAN to troubleshoot an issue between switch1 and switch2. The switches are connected using interface GigabitEthernet 1/1. An external packet capture device is connected is switch2 interface GigabitEthernet 1/2. Which two commands must be added to complete this configuration? (Choose two)

```
switch1(config)# interface GigabitEthernet 1/1
switch1(config-if)# switchport mode trunk
switch1(config-if)# switchport trunk allowed vlan 10,20,30,40,50,60,70-90
switch1(config)# exit
switch1(config)# monitor session 1 source vian 10
switch1(config)# monitor session 1 destination remote vlan 70

switch2(config)# interface GigabitEthernet 1/1
switch2(config-if)# switchport mode trunk
switch2(config-if)# switchport trunk allowed vlan 10,20,30,40,50,60,80-90
switch2(config)# exit
switch2(config)# monitor session 2 source remote vlan 70
switch2(config)# monitor session 2 destination interface GigabitEthernet1/1
```

- switch2(config)# monitor session 1 source remote vlan 70  
switch2(config)# monitor session 1 destination interface GigabitEthernet1/2
- switch2(config)# monitor session 1 source remote vlan 70  
switch2(config)# monitor session 1 destination interface GigabitEthernet1/1
- switch1(config)# interface GigabitEthernet 1/1  
switch1(config-if)# switchport mode access  
switch1(config-if)# switchport access vlan 10  
  
switch2(config)# interface GigabitEthernet 1/1  
switch2(config-if)# switchport mode access  
switch2(config-if)# switchport access vlan 10
- switch2(config)# monitor session 2 destination vlan 10
- switch2(config-if)# switchport trunk allowed vlan 10,20,30,40,50,60,70-80

- A. Option A
- B. Option B
- C. Option C
- D. Option D
- E. Option E

**Correct Answer:** AE

**QUESTION 116**

Which technology is used as the basis for the cisco sd-access data plane?

- A. IPsec
- B. LISP
- C. VXLAN
- D. 802.1Q

**Correct Answer:** C

**Explanation:**

A virtual network identifier (VNI) is a value that identifies a specific virtual network in the data plane.

**QUESTION 117**

Refer to the exhibit. Which action resolves the EtherChannel issue between SW2 and SW3?

```
H - Hot-standby (LACP only)
R - Layer3 S - Layer2
U - in use f - failed to allocate aggregator
M - not in use, minimum links not met
u - unsuitable for bundling
w - waiting to be aggregated
d - default port
Number of channel-groups in use: 1
Number of aggregators: 1
Group Port-channel Protocol Ports
-----
1 Po1(S D ) FAqP Gi0/0(I) Gi0/1(I)

SW3# show etherchannel summary
Flags: D - down F - bundled in port-channel
I - stand-alone s - suspended
H - Hot-standby (LACP only)
R - Layer3 S - Layer2
U - in use f - failed to allocate aggregator
M - not in use, minimum links not met
u - unsuitable for bundling
w - waiting to be aggregated
d - default port
Number of channel-groups in use: 1
Number of aggregators: 1
Group Port-channel Protocol Ports
-----
1 Po1(S D ) LACP Gi0/0(I) Gi0/1(I)
```

- A. Configure switchport mode trunk on SW2.
- B. Configure switchport nonegotiate on SW3
- C. Configure channel-group 1 mode desirable on both interfaces.
- D. Configure channel-group 1 mode active on both interfaces.

**Correct Answer: D**

**QUESTION 118**

Wireless users report frequent disconnections from the wireless network. While troubleshooting a network engineer finds that after the user a disconnect, the connection re-establishes automatically without any input required. The engineer also notices these message logs. Which action reduces the user impact?

```
AP 'AP2' is down. Reason: Radio channel set. 6:54:04 PM
AP 'AP4' is down. Reason: Radio channel set. 6:44:49 PM
AP 'AP7' is down. Reason: Radio channel set. 6:34:32 PM
```

- A. increase the AP heartbeat timeout
- B. increase BandSelect
- C. enable coverage hole detection
- D. increase the dynamic channel assignment interval

**Correct Answer: D**

**Explanation:**

These message logs inform that the radio channel has been reset (and the AP must be down briefly). With dynamic channel assignment (DCA), the radios can frequently switch from one channel to another but it also makes disruption. The default DCA interval is 10 minutes, which is matched with the time of the message logs. By increasing the DCA interval, we can reduce the number of times our users are disconnected for changing radio channels.