

[Download Full Version 350-401 Exam Dumps \(Updated in Feb/2023\)](#)

In a Cisco StackWise Virtual environment, which planes are virtually combined in the common logical switch?

- A. management and data
- B. control and management
- C. control, and forwarding
- D. control and data

**Correct Answer: B**

**QUESTION 26**

**DRAG DROP**

Drag and drop the LISP components on the left to their descriptions on the right. Not all options are used.

map server	IPv4 or IPv6 address of an egress tunnel router that is Internet facing or network core facing
map resolver	receives map-request messages from ITR and searches for the appropriate ETR by consulting mapping database
RLOC	encapsulates LISP packets coming from inside of the LISP site to destinations outside of the site
ITR	

**Correct Answer:**

map server	RLOC
map resolver	map server
RLOC	ITR
ITR	

**QUESTION 27**

Refer to the exhibit. What does the snippet of code achieve?

```
with manager.connect(host=192.168.0.1, port=22,  
username='admin', password='password1', hostkey_verify=True,  
device_params={'name':'nexus'}) as m:
```

- A. It creates a temporary connection to a Cisco Nexus device and retrieves a token to be used for API calls.
- B. It opens a tunnel and encapsulates the login information, if the host key is correct.
- C. It opens an ncclient connection to a Cisco Nexus device and maintains it for the duration of the context.
- D. It creates an SSH connection using the SSH key that is stored, and the password is ignored.

**Correct Answer: C**

**Explanation:**

ncclient is a Python library that facilitates client-side scripting and application development around the NETCONF protocol.

The above Python snippet uses the ncclient to connect and establish a NETCONF session to a Nexus device (which is also a NETCONF server).

#### QUESTION 28

A server running Linux is providing support for virtual machines along with DNS and DHCP services for a small business. Which technology does this represent?

- A. container
- B. Type 1 hypervisor
- C. hardware pass-thru
- D. Type 2 hypervisor

**Correct Answer: D**

#### Explanation:

In contrast to type 1 hypervisor, a type 2 hypervisor (or hosted hypervisor) runs on top of an operating system and not the physical hardware directly. A big advantage of Type 2 hypervisors is that management console software is not required. Examples of type 2 hypervisor are VMware Workstation (which can run on Windows, Mac and Linux) or Microsoft Virtual PC (only runs on Windows).

#### QUESTION 29

Which protocol does REST API rely on to secure the communication channel?

- A. TCP
- B. HTTPS
- C. SSH
- D. HTTP

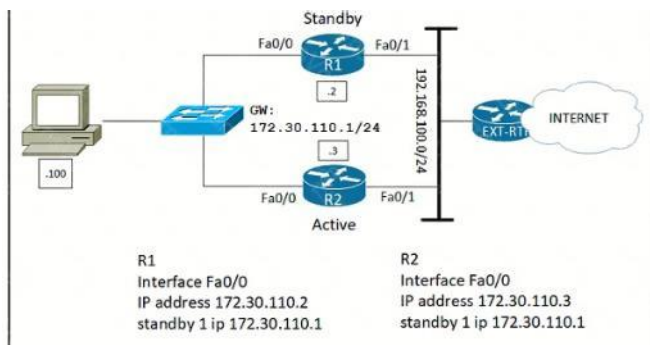
**Correct Answer: B**

#### Explanation:

The REST API accepts and returns HTTP (not enabled by default) or HTTPS messages that contain JavaScript Object Notation (JSON) or Extensible Markup Language (XML) documents. You can use any programming language to generate the messages and the JSON or XML documents that contain the API methods or Managed Object (MO) descriptions.

#### QUESTION 30

Refer to the exhibit. Which configuration change ensures that R1 is the active gateway whenever it is in a functional state for the 172.30.110.0/24 network?

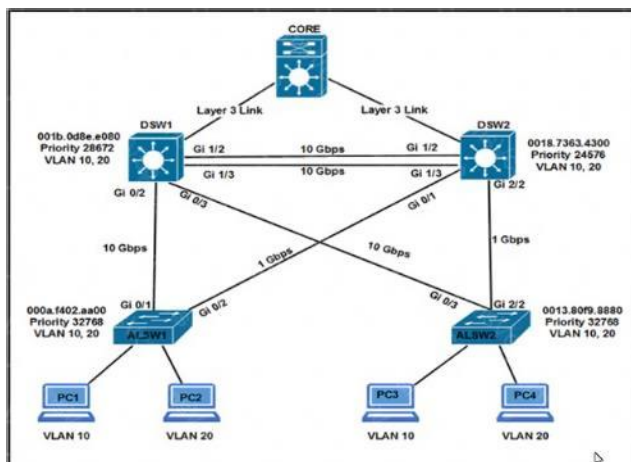


- A. R1  
standby 1 preempt  
R2  
standby 1 priority 90
- B. R1  
standby 1 preempt  
R2  
standby 1 priority 100
- C. R2  
standby 1 priority 100  
standby 1 preempt
- D. R2  
standby 1 priority 90  
standby 1 preempt

**Correct Answer: A**

#### QUESTION 31

Refer to the exhibit. Assuming all links are functional, which path does PC1 take to reach DSW1?



- A. PC1 goes from ALSW1 to DSW2 to CORE to DSW1.
- B. PC1 goes from ALSW1 to DSW2 to DSW1.
- C. PC1 goes from ALSW1 to DSW1.
- D. PC1 goes from ALSW1 to DSW2 to ALSW2 to DSW1.

**Correct Answer: B**

#### QUESTION 32

A customer wants to use a single SSID to authenticate IoT devices using different passwords. Which Layer 2 security type must be configured in conjunction with Cisco ISE to achieve this requirement?

- A. Fast Transition
- B. Central Web Authentication
- C. Cisco Centralized Key Management
- D. Identity PSK

**Correct Answer: D**

#### QUESTION 33

[350-401 Dumps](#)   [350-401 PDF](#)   [350-401 VCE](#)   [350-401 Q&As](#)  
<https://www.ensurepass.com/350-401.html>

Which deployment option of Cisco NGFW provides scalability?

- A. tap
- B. clustering
- C. inline tap
- D. high availability

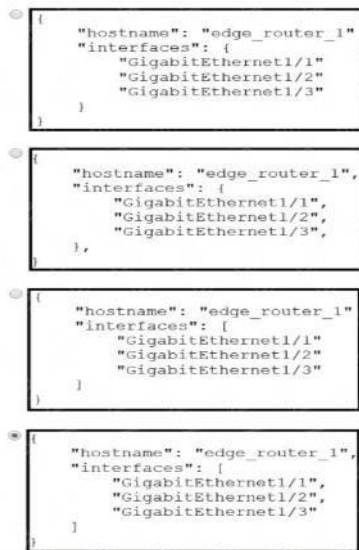
**Correct Answer: B**

**Explanation:**

Clustering lets you group multiple Firepower Threat Defense (FTD) units together as a single logical device. Clustering is only supported for the FTD device on the Firepower 9300 and the Firepower 4100 series. A cluster provides all the convenience of a single device (management, integration into a network) while achieving the increased throughput and redundancy of multiple devices.}

**QUESTION 34**

Which exhibit displays a valid JSON file?



- A. Option A
- B. Option B
- C. Option C
- D. Option D

**Correct Answer: D**

**QUESTION 35**

What is the data policy in a Cisco SD-WAN deployment?

- A. list of ordered statements that define node configurations and authentication used within the SD-WAN overlay
- B. Set of statements that defines how data is forwarded based on IP packet information and specific VPNs

- C. detailed database mapping several kinds of addresses with their corresponding location
- D. group of services tested to guarantee devices and links liveliness within the SD-WAN overlay

**Correct Answer:** B

**QUESTION 36**

How does Cisco Trustsec enable more access controls for dynamic networking environments and data centers?

- A. classifies traffic based on advanced application recognition
- B. uses flexible NetFlow
- C. classifies traffic based on the contextual identity of the endpoint rather than its IP address correct
- D. assigns a VLAN to the endpoint

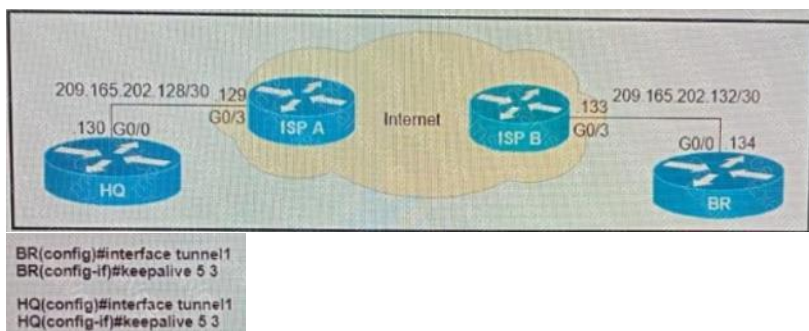
**Correct Answer:** C

**Explanation:**

The Cisco TrustSec solution simplifies the provisioning and management of network access control through the use of software-defined segmentation to classify network traffic and enforce policies for more flexible access controls. Traffic classification is based on endpoint identity, not IP address, enabling policy change without network redesign.

**QUESTION 37**

Refer to the exhibit. What is the effect of these commands on the BR and HQ tunnel interfaces?



- A. The tunnel line protocol goes down when the keepalive counter reaches 6
- B. The keepalives are sent every 5 seconds and 3 retries
- C. The keepalives are sent every 3 seconds and 5 retries
- D. The tunnel line protocol goes down when the keepalive counter reaches 5

**Correct Answer:** B

**QUESTION 38**

How does Cisco Trustsec enable more flexible access controls for dynamic networking environments and data centers?

- A. uses flexible NetFlow
- B. assigns a VLAN to the endpoint
- C. classifies traffic based on the contextual identity of the endpoint rather than its IP address