

QUESTION 1

DRAG DROP

Drag and drop the solutions that comprise Cisco Cyber Threat Defense from the left onto the objectives they accomplish on the right.

StealthWatch	detects suspicious web activity
Identity Services Engine	analyzes network behavior and detects anomalies
Web Security Appliance	uses pxGrid to remediate security threats

Correct Answer:

StealthWatch	Web Security Appliance
Identity Services Engine	StealthWatch
Web Security Appliance	Identity Services Engine

QUESTION 2

What is the function of a fabric border node in a Cisco SD-Access environment?

- A. To collect traffic flow information toward external networks
- B. To connect the Cisco SD-Access fabric to another fabric or external Layer 3 networks
- C. To attach and register clients to the fabric
- D. To handle an ordered list of IP addresses and locations for endpoints in the fabric.

Correct Answer: B

QUESTION 3

What happens when a FlexConnect AP changes to standalone mode?

- A. All controller-dependent activities stop working except the DFS.
- B. All client roaming continues to work
- C. Only clients on central switching WLANs stay connected.
- D. All clients on an WLANs are disconnected

Correct Answer: A

QUESTION 4

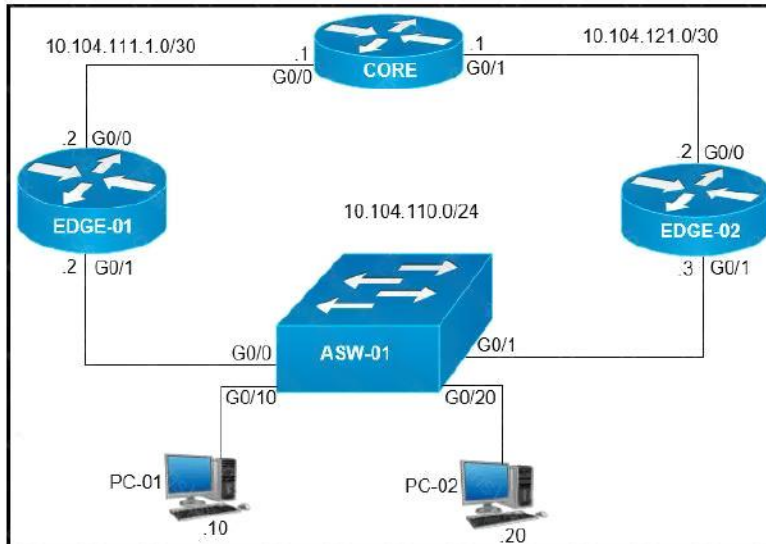
What is an emulated machine that has dedicated compute memory, and storage resources and a fully installed operating system?

- A. Container
- B. Mainframe
- C. Host
- D. virtual machine

Correct Answer: B

QUESTION 5

Refer to the exhibit. On which interfaces should VRRP commands be applied to provide first hop redundancy to PC-01 and PC-02?



- A. G0/0 and G0/1 on Core
- B. G0/0 on Edge-01 and G0/0 on Edge-02
- C. G0/1 on Edge-01 and G0/1 on Edge-02
- D. G0/0 and G0/1 on ASW-01

Correct Answer: C

QUESTION 6

Refer to the exhibit. An engineer attempts to bundle interface Gi0/0 into the port channel, but it does not function as expected. Which action resolves the issue?

```
Switch1#show lacp internal
```

Flags: S - Device is requesting Slow LACPDUs
F - Device is requesting Fast LACPDUs
A - Device is in Active mode P - Device is in Passive mode

Channel group 1

Port	Flags	State	LACP port Priority	Admin Key	Oper Key	Port Number	Port State
Gi0/0	SP	hot-sby	20	0x1	0x1	0x1	0x5
Gi0/1	SA	bnd1	15	0x1	0x1	0x2	0x3C

- A. Configure channel-group 1 mode active on interface Gi0/0.
- B. Configure no shutdown on interface Gi0/0
- C. Enable fast LACP PDUs on interface Gi0/0.

D. Set LACP max-bundle to 2 on interface Port-channelM

Correct Answer: C

QUESTION 7

DRAG DROP

Drag and drop the characteristics from the left onto the infrastructure deployment models on the right.

Capacity easily scales up or down.	On-Premises
Infrastructure requires large and regular investments.	
It enables users to access resources from anywhere.	
It requires capacity planning for power and cooling.	Cloud

Correct Answer:

Capacity easily scales up or down.	On-Premises
Infrastructure requires large and regular investments.	Infrastructure requires large and regular investments.
It enables users to access resources from anywhere.	It requires capacity planning for power and cooling.
It requires capacity planning for power and cooling.	Cloud
	Capacity easily scales up or down.
	It enables users to access resources from anywhere.

QUESTION 8

DRAG DROP

Drag and drop the characteristics from the left onto the technology types on the right.

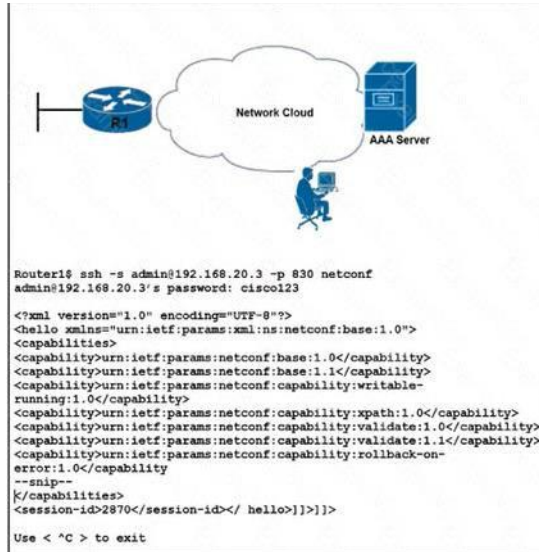
This type of technology provides automation across multiple technologies and domains.	Configuration Management
This type of technology enables consistent configuration of infrastructure resources.	
Puppet is used for this type of technology.	
Ansible is used for this type of technology.	Orchestration

Correct Answer:

This type of technology provides automation across multiple technologies and domains.	Configuration Management
This type of technology enables consistent configuration of infrastructure resources.	This type of technology provides automation across multiple technologies and domains.
Puppet is used for this type of technology.	Puppet is used for this type of technology.
Ansible is used for this type of technology.	Orchestration
	This type of technology enables consistent configuration of infrastructure resources.
	Ansible is used for this type of technology.

QUESTION 9

Refer to the exhibit. An engineer tries to log in to router R1. Which configuration enables a successful login?

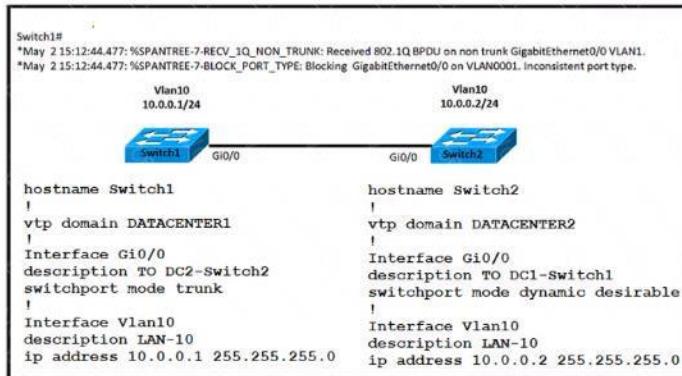


- A. R1# username admin privilege 15
aaa authorization exec default local
- B. R1# netconf-yang
username admin privilege 15 secret cisco123
aaa new-model
aaa authorization exec default local
- C. R1# aaa new-model
aaa authorization exec default local
enable aaa admin privilege 15
- D. R1# username admin privilege 15
aaa authorization exec default local
netconf-yang

Correct Answer: B

QUESTION 10

Refer to the exhibit. An engineer implemented several configuration changes and receives the logging message on switch1. Which action should the engineer take to resolve this issue?



- A. Change the VTP domain to match on both switches
- B. Change Switch2 to switch port mode dynamic auto
- C. Change Switch1 to switch port mode dynamic auto
- D. Change Switch1 to switch port mode dynamic desirable

Correct Answer: A

QUESTION 11

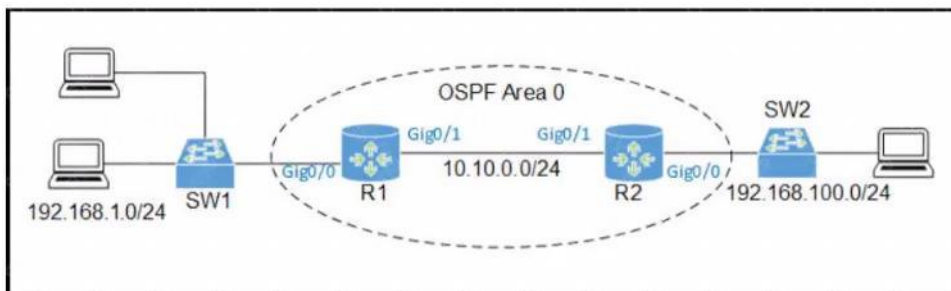
By default, which virtual MAC address does HSRP group 22 use?

- A. c0:42:01:67:05:16
- B. c0:07:0c:ac:00:22
- C. 00:00:0c:07:ac:16
- D. 00:00:0c:07:ac:22

Correct Answer: D

QUESTION 12

Refer to the exhibit. An engineer must allow R1 to advertise the 192.168.1.0/24 network to R2. R1 must perform this action without sending OSPF packets to SW1. Which command set should be applied?



- A. R1(config)# router ospf 1
R1(config-router)# no passive-interface gig0/0
- B. R1(config)# router ospf 1
R1(config-router)# passive-interface gig0/0
- C. R1(config)# interface gig0/0
R1(config-if)# ip ospf hello-interval 0