

## [Download Full Version 300-420 Exam Dumps\(Updated in Feb/2023\)](#)

**Correct Answer:** D

### **QUESTION 18**

Which design consideration must be made when using IPv6 overlay tunnels?

- A. Overlay tunnels that connect isolated IPv6 networks can be considered a final IPv6 network architecture.
- B. Overlay tunnels should only be considered as a transition technique toward a permanent solution.
- C. Overlay tunnels can be configured only between border devices and require only the IPv6 protocol stack.
- D. Overlay tunneling encapsulates IPv4 packets in IPv6 packets for delivery across an IPv6 infrastructure.

**Correct Answer:** C

### **QUESTION 19**

An engineer must design a VPN solution for a company that has multiple branches connecting to a main office. What are two advantages of using DMVPN instead of IPsec tunnels to accomplish this task? (Choose two.)

- A. support for AES 256-bit encryption
- B. greater scalability
- C. support for anycast gateway
- D. lower traffic overhead
- E. dynamic spoke-to-spoke tunnels

**Correct Answer:** BE

### **QUESTION 20**

An engineer is designing a QoS policy that queues excess packets for later transmission. Which mechanism must be included in the design?

- A. shaping
- B. WRED
- C. policing
- D. RED

**Correct Answer:** A

### **QUESTION 21**

Which consideration must be taken into account when using the DHCP relay feature in a Cisco SD-Access Architecture?

- A. DHCP-relay must be enabled on fabric edge nodes to provide the correct mapping of DHCP scope to the local anycast gateway.
- B. A DHCP server must be enabled on the border nodes to allow subnets to span multiple fabric edges.
- C. DHCP servers must support Cisco SD-Access extensions to correctly assign IPs to endpoints in an SDAccess fabric with anycast gateway.

[300-420 Exam Dumps](#) [300-420 PDF Dumps](#) [300-420 VCE Dumps](#) [300-420 Q&As](#)

<https://www.ensurepass.com/300-420.html>

## [Download Full Version 300-420 Exam Dumps\(Updated in Feb/2023\)](#)

- D. DHCP Option-82 must be enabled to map the circuit IP option to the access fabric node where the DHCP discover originated.

**Correct Answer:** A

### **QUESTION 22**

Which function are fabric intermediate nodes responsible for in an SD-Access Architecture?

- A. mapping EIDs to RLOCs
- B. encapsulating user traffic in a VXLAN header including the SGT
- C. registering new endpoints in the HTDB
- D. transporting IP packets between edge nodes and border nodes

**Correct Answer:** D

### **QUESTION 23**

What are two valid scaling techniques when an EIGRP network is designed that consists of more than 1000 routers? (Choose two.)

- A. Use structured hierarchical topology with route summarization
- B. Used sub-second timers
- C. Use the distribute-list command to filter routes
- D. Modify delay parameters on the links
- E. Implement multiple EIGRP autonomous systems

**Correct Answer:** AE

### **QUESTION 24**

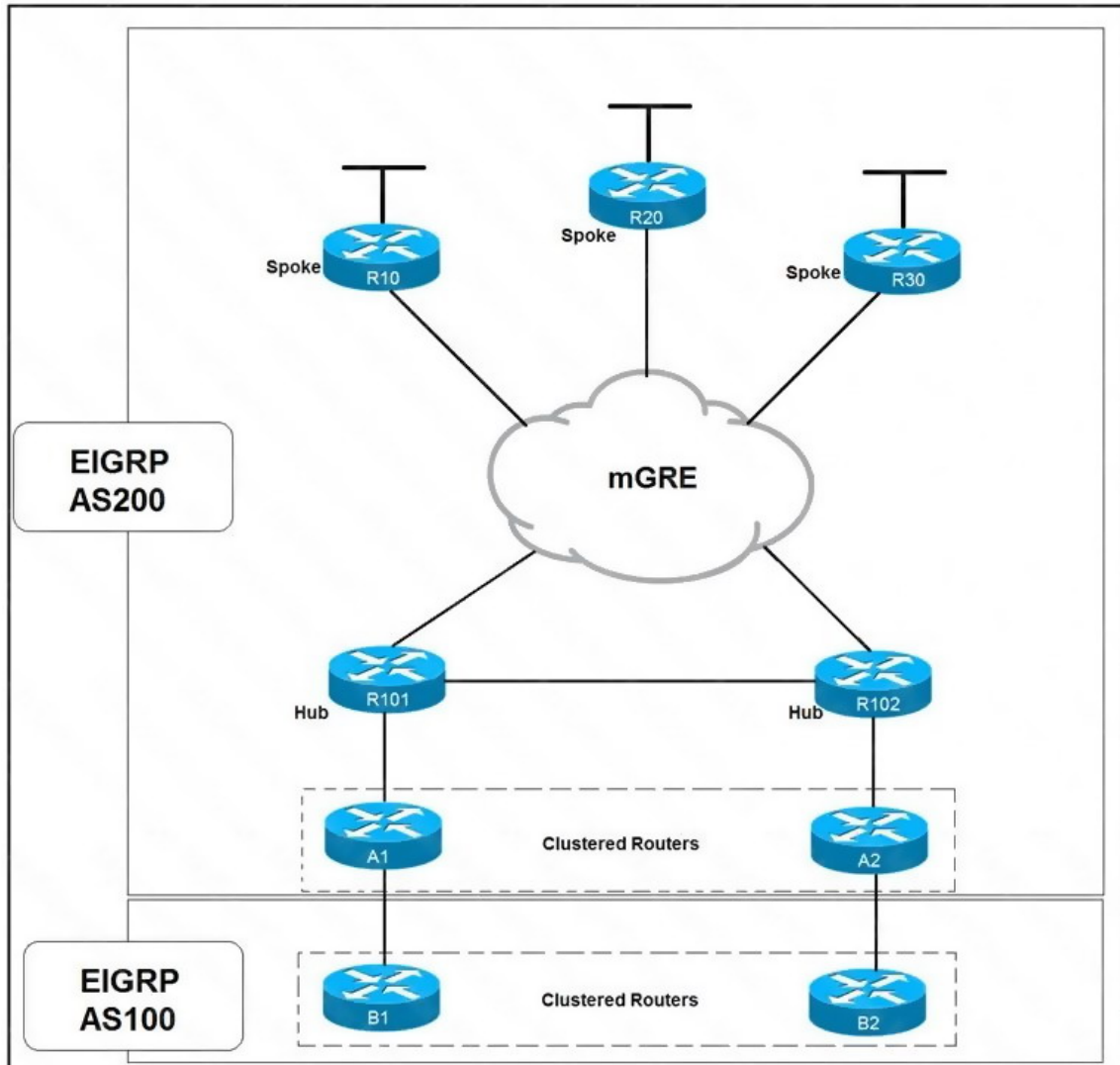
Which OSPF area blocks LSA Type 3, 4 and 5, but allows a default summary route?

- A. normal
- B. stub
- C. NSSA
- D. totally stubby

**Correct Answer:** D

### **QUESTION 25**

Refer to the exhibit. Which solution decreases the EIGRP convergence time?



- A. Enable subsecond timers
- B. Increase the hold time value
- C. Increase the dead timer value
- D. Enable stub routing on the spokes

**Correct Answer: D**

#### QUESTION 26

A network engineer must connect two sites across a public network using a secure tunneling technology that supports multicast traffic. Which technology must be chosen?

- A. IPsec
- B. GRE
- C. PPTP
- D. GRE over IPsec

**Correct Answer: D**

## [Download Full Version 300-420 Exam Dumps\(Updated in Feb/2023\)](#)

### QUESTION 27

An enterprise customer has these requirements:

- end-to-end QoS for the business-critical applications and VoIP services based on CoS marking
- flexibility to offer services such as IPv6 and multicast without any reliance on the service provider
- support for full-mesh connectivity at Layer 2

Which WAN connectivity option meets these requirements?

- A. VPWS
- B. MPLS VPN
- C. DMVPN
- D. VPLS

**Correct Answer:** D

### QUESTION 28

Which two BGP features will result in successful route exchanges between eBGP neighbors sharing the same AS number? (Choose two.)

- A. advertise-best-external
- B. bestpath as-path ignore
- C. client-to-client reflection
- D. as-override
- E. allow-as-in

**Correct Answer:** DE

### QUESTION 29

Which design consideration should be observed when EIGRP is configured on Data Center switches?

- A. Perform manual summarization on all Layer 3 interfaces to minimize the size of the routing table.
- B. Prevent unnecessary EIGRP neighborships from forming across switch virtual interfaces.
- C. Lower EIGRP hello and hold timers to their minimum settings to ensure rapid route reconvergence.
- D. Configure multiple EIGRP autonomous systems to segment Data Center services and applications.

**Correct Answer:** A

### QUESTION 30

DRAG DROP

Drag and drop the characteristics from the left onto the correct telemetry mode on the right.

[Download Full Version 300-420 Exam Dumps\(Updated in Feb/2023\)](#)

The collector initiates a session to the device	Dial-In
supports TCP, UDP, and gRPC	
The device initiates a session to the collector	
supports gRPC only	Dial-Out

**Correct Answer:**

The collector initiates a session to the device	Dial-In
supports TCP, UDP, and gRPC	The collector initiates a session to the device
The device initiates a session to the collector	supports gRPC only
supports gRPC only	Dial-Out
	The device initiates a session to the collector
	supports TCP, UDP, and gRPC

**QUESTION 31**

When vEdge router redundancy is designed, which FHRP is supported?

- A. HSRP
- B. OMP
- C. GLBP
- D. VRRP

**Correct Answer:** D

**QUESTION 32**

Refer to the exhibit. EIGRP has been configured on all links. The spoke nodes have been configured as EIGRP stubs, and the WAN links to R3 have higher bandwidth and lower delay