

QUESTION 21

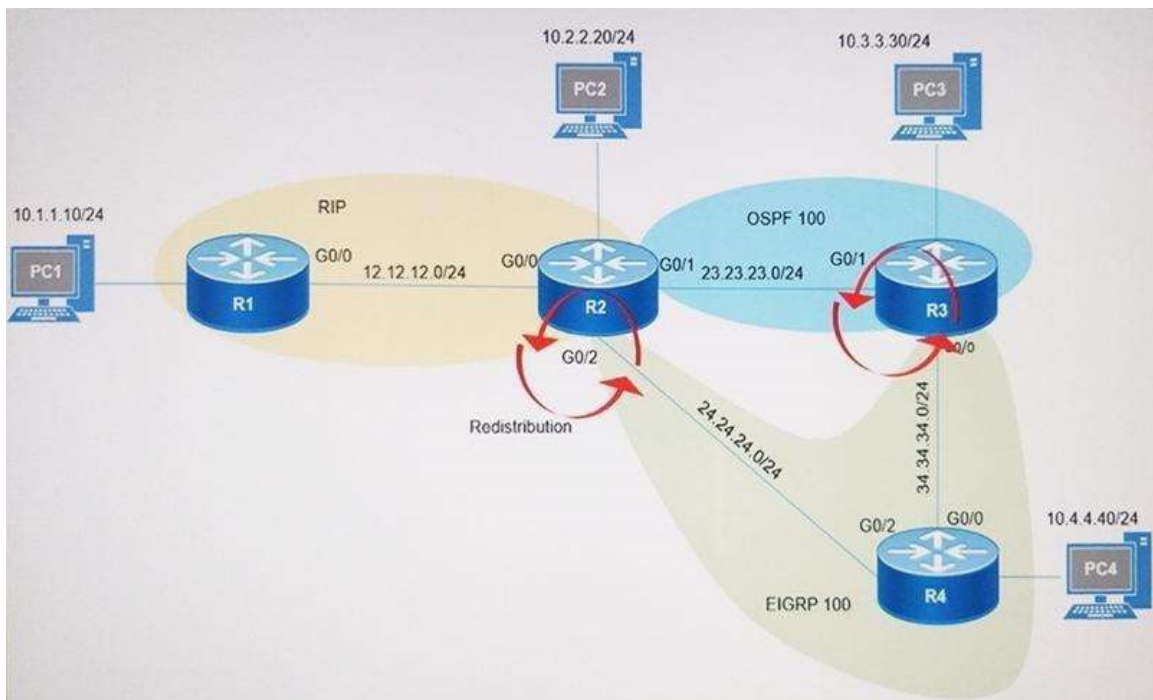
Which configuration enabled the VRF that is labeled "Inet" on FastEthernet0/0?

- A. R1(config)# ip vrf Inet
R1(config-vrf)#ip vrf FastEthernet0/0
- B. R1(config)#ip vrf Inet FastEthernet0/0
- C. R1(config)# ip vrf Inet
R1(config-vrf)#interface FastEthernet0/0
R1(config-if)#ip vrf forwarding Inet
- D. R1(config)#router ospf 1 vrf Inet
R1(config-router)#ip vrf forwarding FastEthernet0/0

Correct Answer: C

QUESTION 22

Refer to the exhibit. After redistribution is enabled between the routing protocols; PC2, PC3, and PC4 cannot reach PC1. Which action can the engineer take to solve the issue so that all the PCs are reachable?



- A. Set the administrative distance 100 under the RIP process on R2.
- B. Filter the prefix 10.1.1.0/24 when redistributed from OSPF to EIGRP.
- C. Filter the prefix 10.1.1.0/24 when redistributed from RIP to EIGRP.
- D. Redistribute the directly connected interfaces on R2.

Correct Answer: B

QUESTION 23

Which command allows traffic to load-balance in an MPLS Layer 3 VPN configuration?

- A. multi-paths eibgp 2
- B. maximum-paths 2
- C. maximum-paths ibgp 2
- D. multi-paths 2

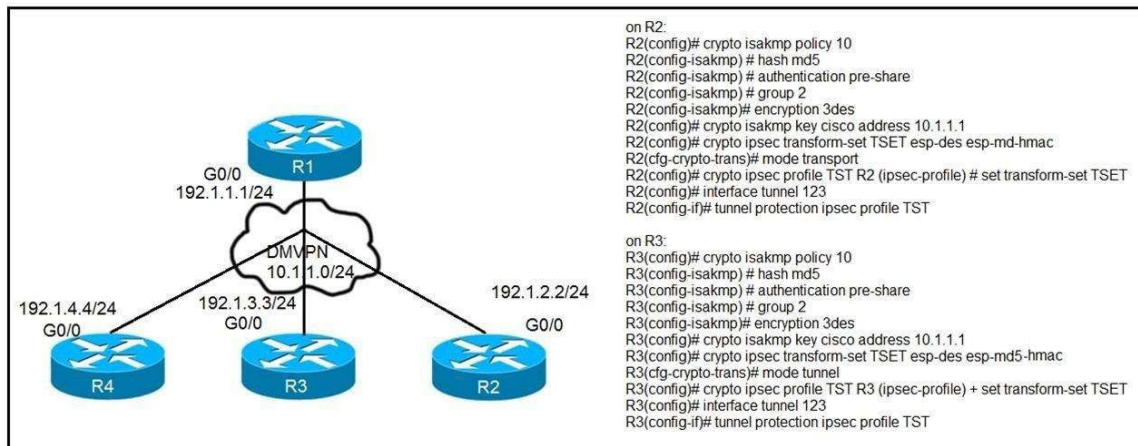
Correct Answer: C

Explanation:

https://www.cisco.com/c/en/us/td/docs/switches/datacenter/sw/5_x/nx-os/mpls/configuration/guide/mpls_cg/mp_vpn_multipath.html

QUESTION 24

Refer to the exhibit. After applying IPsec, the engineer observed that the DMVPN tunnel went down, and both spoke-to-spoke and hub were not establishing. Which two actions resolve the issue? (Choose two.)



- A. Change the mode from mode tunnel to mode transport on R3.
- B. Remove the crypto isakmp key cisco address 10.1.1.1 on R2 and R3.
- C. Configure the crypto isakmp key cisco address 192.1.1.1 on R2 and R3.
- D. Configure the crypto isakmp key cisco address 0.0.0.0 on R2 and R3.
- E. Change the mode from mode transport to mode tunnel on R2.

Correct Answer: AD

QUESTION 25

Which statement about route distinguishers in an MPLS network is true?

- A. Route distinguishers allow multiple instances of a routing table to coexist within the edge router.
- B. Route distinguishers are used for label bindings.
- C. Route distinguishers make a unique VPNv4 address across the MPLS network.
- D. Route distinguishers define which prefixes are imported and exported on the edge router.

Correct Answer: C

QUESTION 26

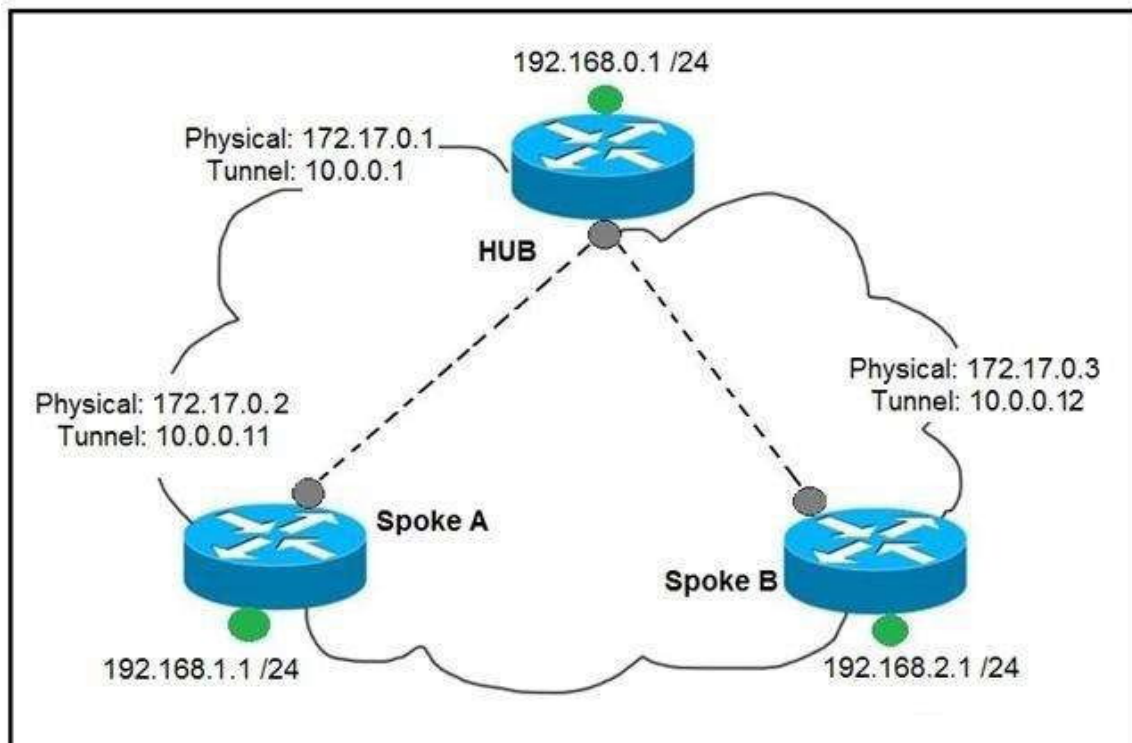
Which statement about MPLS LDP router ID is true?

- A. If not configured, the operational physical interface is chosen as the router ID even if a loopback is configured.
- B. The loopback with the highest IP address is selected as the router ID.
- C. The MPLS LDP router ID must match the IGP router ID.
- D. The force keyword changes the router ID to the specified address without causing any impact.

Correct Answer: B

QUESTION 27

Refer to the exhibit. Which interface configuration must be configured on the spoke A router to enable a dynamic DMVPN tunnel with the spoke B router?



- A.

```
interface Tunnel0
description mGRE – DMVPN Tunnel
ip address 10.0.0.11 255.255.255.0
ip nhrp map multicast dynamic
ip nhrp network-id 1
tunnel source 10.0.0.1
tunnel destination FastEthernet 0/0
tunnel mode gre multipoint
```

- B. **interface Tunnel0**
ip address 10.0.0.11 255.255.255.0
ip nhrp network-id 1
tunnel source FastEthernet 0/0
tunnel mode gre multipoint
ip nhrp nhs 10.0.0.1
ip nhrp map 10.0.0.1 172.17.0.1
- C. **interface Tunnel0**
ip address 10.1.0.11 255.255.255.0
ip nhrp network-id 1
tunnel source 1.1.1.10
ip nhrp map 10.0.0.11 172.17.0.2
tunnel mode gre
- D. **interface Tunnel0**
ip address 10.0.0.11 255.255.255.0
ip nhrp map multicast static
ip nhrp network-id 1
tunnel source 10.0.0.1
tunnel mode gre multipoint

Correct Answer: B

QUESTION 28

Which list defines the contents of an MPLS label?

- A. 20-bit label; 3-bit traffic class; 1-bit bottom stack; 8-bit TTL
- B. 32-bit label; 3-bit traffic class; 1-bit bottom stack; 8-bit TTL
- C. 20-bit label; 3-bit flow label; 1-bit bottom stack; 8-bit hop limit
- D. 32-bit label; 3-bit flow label; 1-bit bottom stack; 8-bit hop limit

Correct Answer: A

QUESTION 29

Which transport layer protocol is used to form LDP sessions?

- A. UDP
- B. SCTP
- C. TCP
- D. RDP

Correct Answer: C

QUESTION 30

Refer to the exhibit. What does the imp-null tag represent in the MPLS VPN cloud?

```
Router# show tag-switching tdp bindings
(...)
tib entry: 10.10.10.1/32, rev 31
    local binding: tag: 18
    remote binding: tsr: 10.10.10.1:0, tag: imp-null
    remote binding: tsr: 10.10.10.2:0, tag: 18
    remote binding: tsr: 10.10.10.6:0, tag: 21
tib entry: 10.10.10.2/32, rev 22
    local binding: tag: 17
    remote binding: tsr: 10.10.10.2:0, tag: imp-null
    remote binding: tsr: 10.10.10.1:0, tag: 19
    remote binding: tsr: 10.10.10.6:0, tag: 22
```

- A. Pop the label
- B. Impose the label
- C. Include the EXP bit
- D. Exclude the EXP bit

Correct Answer: A

QUESTION 31

Which protocol is used to determine the NBMA address on the other end of a tunnel when mGRE is used?

- A. NHRP
- B. IPsec
- C. MP-BGP
- D. OSPF

Correct Answer: A

QUESTION 32

Refer to the exhibits. Phase-3 tunnels cannot be established between spoke-to-spoke in DMVPN. Which two commands are missing? (Choose two.)