

[Download Full Version 200-901 Exam Dumps\(Updated in Feb/2023\)](#)

QUESTION 1

Which statement describes the benefit of using functions in programming?

- A. Functions allow problems to be split into simpler, smaller groups, and reduce code repetition, which makes the code easier to read.
- B. Functions ensure that a developer understands the inner logic contained before using them as part of a script or application.
- C. Functions create the implementation of secret and encrypted algorithms.
- D. Functions store mutable values within a script or application.

Correct Answer: A

QUESTION 2

Which two statements describe the role of an artifact repository in a CI/CD pipeline? (Choose two.)

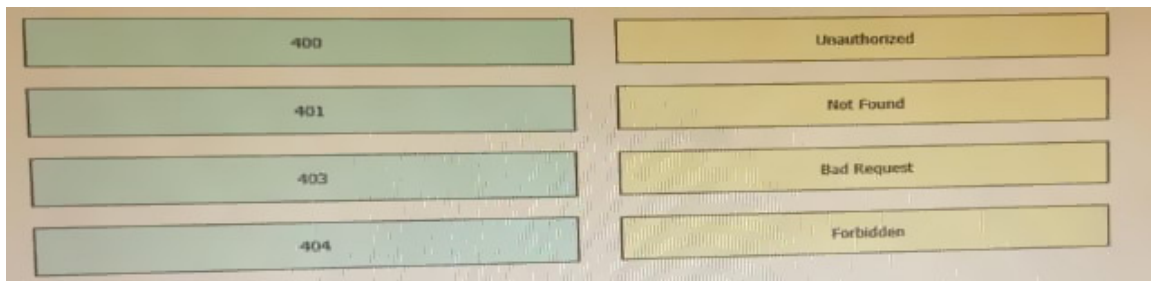
- A. An artifact repository allows to compare and merge changes in the source code of files involved in a build process.
- B. An artifact repository is needed only for CI/CD pipeline executed on a public cloud infrastructure.
- C. An artifact repository provides traceability, search, and management of binary files.
- D. An artifact repository is needed only for managing open source software.
- E. An artifact repository stores files needed and generated during the build process.

Correct Answer: CE

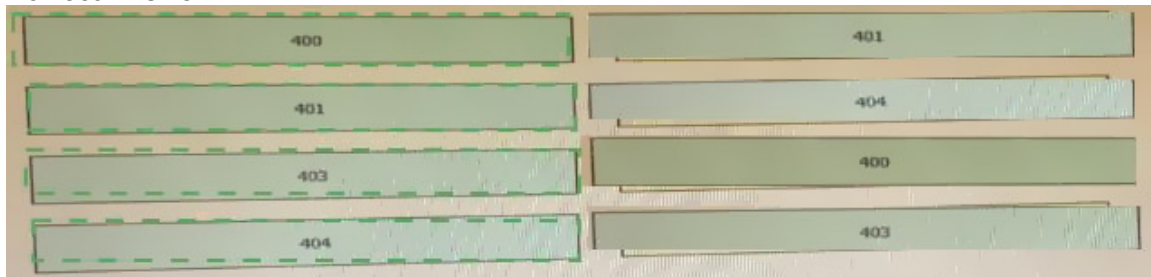
QUESTION 3

DRAG DROP

Drag and drop the HTTP status codes from the left onto the correct descriptions on the right.



Correct Answer:



QUESTION 4

[200-901 Exam Dumps](#) [200-901 PDF Dumps](#) [200-901 VCE Dumps](#) [200-901 Q&As](#)

<https://www.ensurepass.com/200-901.html>

[Download Full Version 200-901 Exam Dumps\(Updated in Feb/2023\)](#)

Which product provides network controller-level management features?

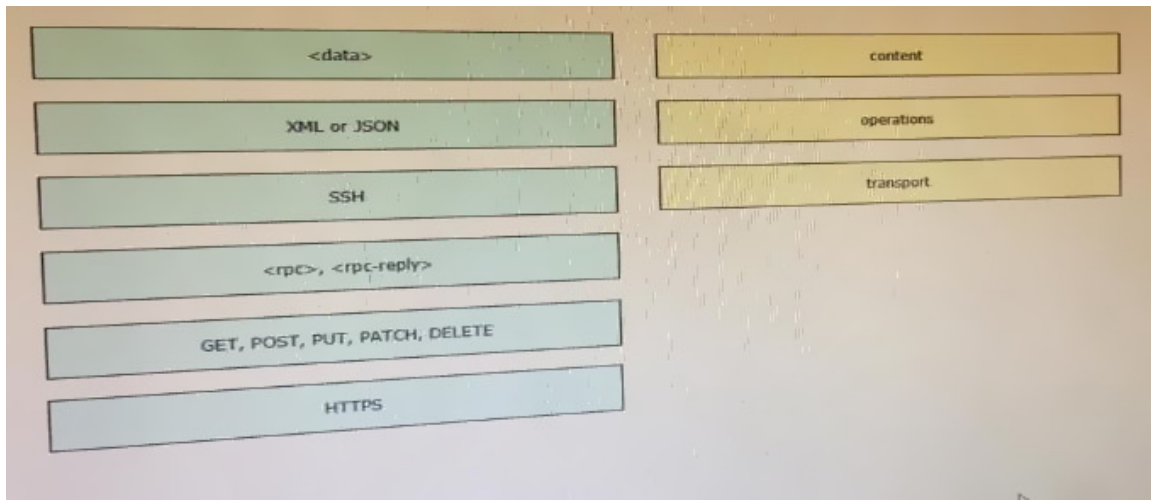
- A. Cisco DNA Center
- B. Cisco NX-OS
- C. Cisco UCS Manager
- D. Cisco ISE

Correct Answer: A

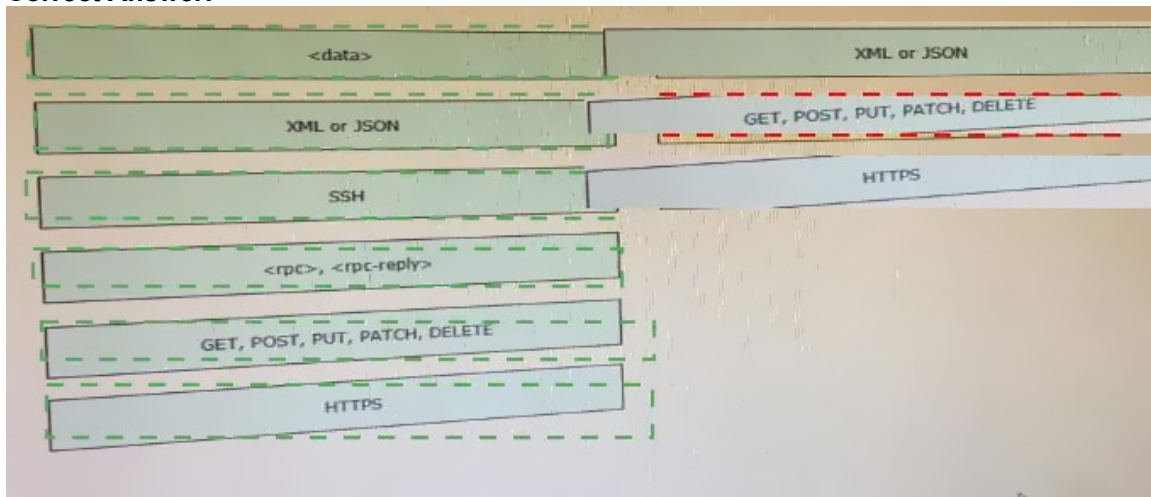
QUESTION 5

DRAG DROP

Drag and drop elements of the RESTCONF protocol stack from the left onto the correct description on the right. Not all elements on the left are used.



Correct Answer:



QUESTION 6

[200-901 Exam Dumps](#) [200-901 PDF Dumps](#) [200-901 VCE Dumps](#) [200-901 Q&As](#)

<https://www.ensurepass.com/200-901.html>

[Download Full Version 200-901 Exam Dumps\(Updated in Feb/2023\)](#)

Which two items are Cisco DevNet resources? (Choose two.)

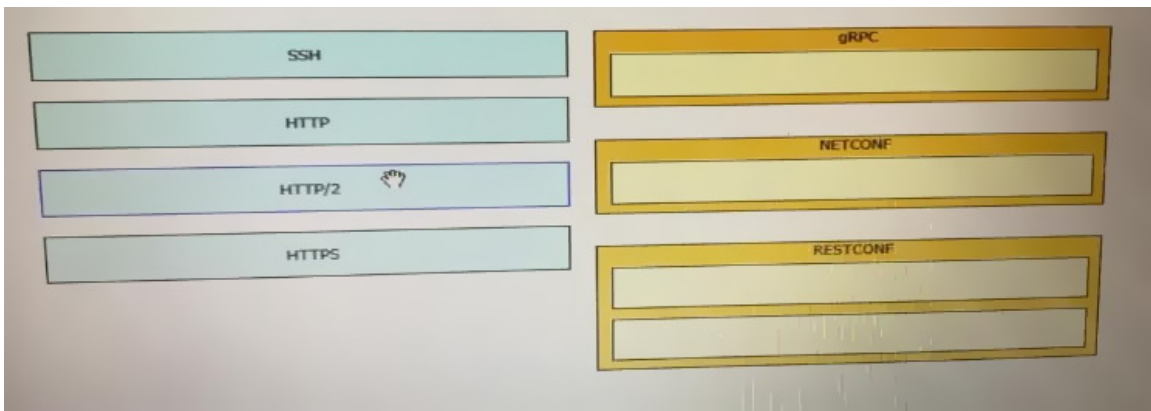
- A. TAC support
- B. Bitbucket
- C. Sandbox
- D. Software research
- E. API Documentation

Correct Answer: CE

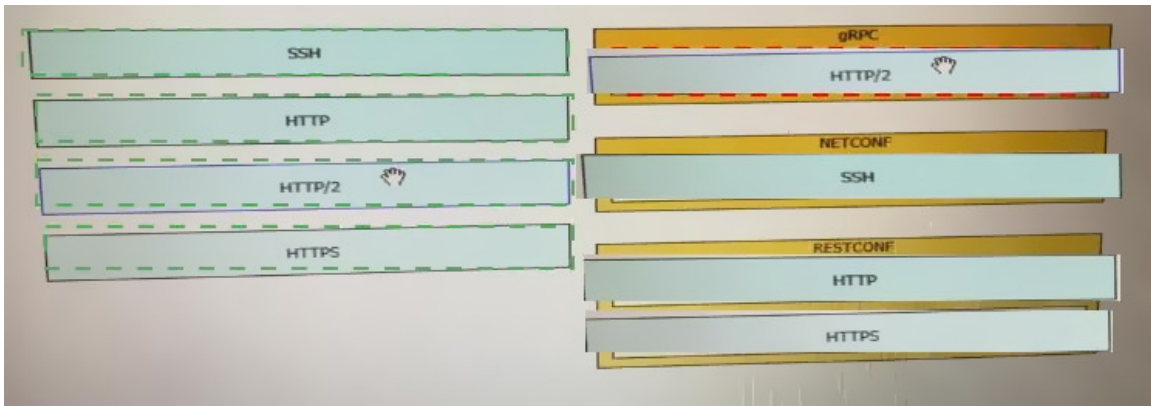
QUESTION 7

DRAG DROP

Drag and drop the network automation interfaces from the left onto the transport protocols that they support on the right.



Correct Answer:



QUESTION 8

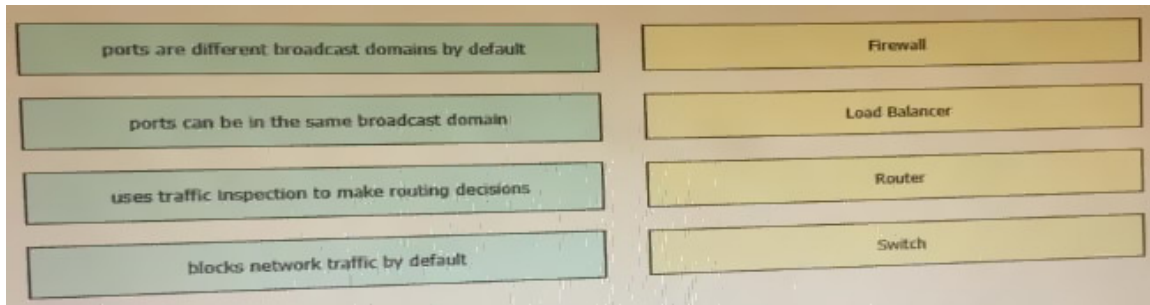
[200-901 Exam Dumps](#) [200-901 PDF Dumps](#) [200-901 VCE Dumps](#) [200-901 Q&As](#)

<https://www.ensurepass.com/200-901.html>

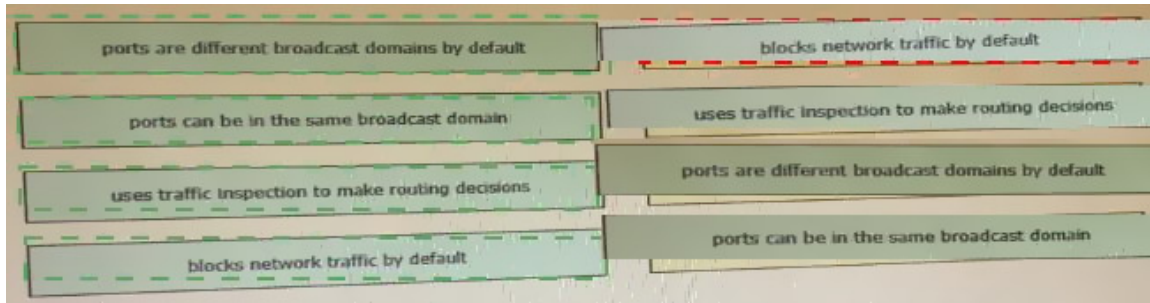
[Download Full Version 200-901 Exam Dumps\(Updated in Feb/2023\)](#)

DRAG DROP

Drag and drop the functionalities from the left onto correct networking devices on the right.



Correct Answer:



QUESTION 9

Which two statements about JSON and XML are true? (Choose two.)

- A. JSON objects are collection of key value pairs.
- B. The syntax of JSON contains tags, elements, and attributes.
- C. JSON arrays are an unordered set of key value pairs.
- D. The syntax of XML contains tags, elements, and attributes.
- E. XML objects are collections of key-value pairs.

Correct Answer: AD

QUESTION 10

Which two types of NAT are used in a network? (Choose two.)

- A. Static NAT
- B. Normal NAT
- C. Multicast NAT
- D. Dynamic NAT
- E. Router NAT

Correct Answer: AD

QUESTION 11

Which type of threat occur when an attacker can send hostile data to an interpreter within an

[200-901 Exam Dumps](#) [200-901 PDF Dumps](#) [200-901 VCE Dumps](#) [200-901 Q&As](#)

<https://www.ensurepass.com/200-901.html>

[Download Full Version 200-901 Exam Dumps\(Updated in Feb/2023\)](#)

application?

- A. Cross-site scripting
- B. Sensitive data exposure
- C. Broken authentication
- D. Injection

Correct Answer: D

QUESTION 12

A company has written a script that creates a log bundle from the Cisco DNA Center every day. The script runs without error and the bundles are produced. However, when the script is run during business hours, report poor voice quality of phones calls. What explains this behavior?

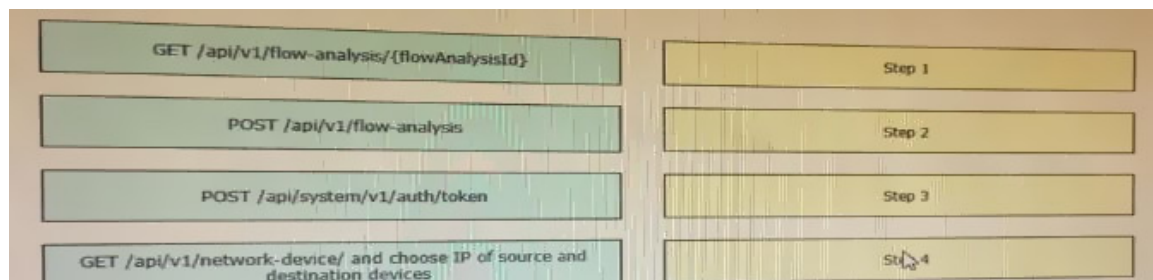
- A. The application is running in the Voice VLAN and causes delays and jitter in the subnet.
- B. The speed and duplex settings in Cisco DNA Center are set incorrectly, which causes the transfer to be too slow.
- C. The script is written in a low-level programming language where there is no memory safety. This causes a buffer overflow and disruption on the network.
- D. Generating the logs causes the CPU on the network controller to spike, which causes delays in forwarding the voice IP packets.

Correct Answer: D

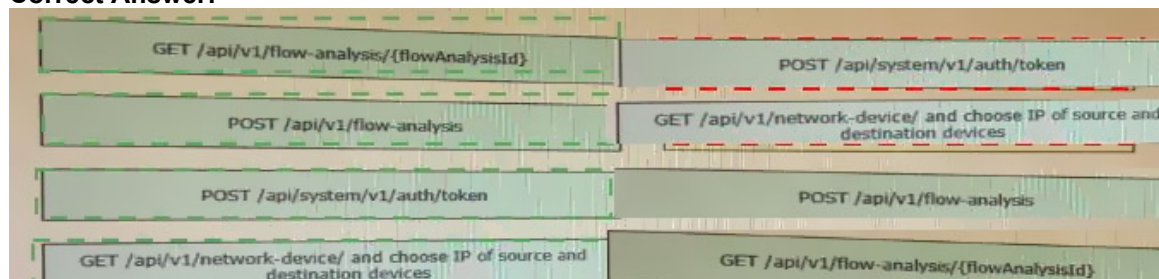
QUESTION 13

DRAG DROP

Drag and drop the requests from the left into the correct order on the right to create and check the path trace between two devices using Cisco DNA center API.



Correct Answer:



QUESTION 14

Refer to the exhibit. Given the API documentation for the UCS SDK python class, UcsHandle,

[200-901 Exam Dumps](#) [200-901 PDF Dumps](#) [200-901 VCE Dumps](#) [200-901 Q&As](#)

<https://www.ensurepass.com/200-901.html>