

- A. DMZ
- B. enterprise branch
- C. building distribution
- D. server farm/data center
- E. MAN

**Correct Answer:** CD

**QUESTION 120**

Why would an engineer implement variable-length subnet masks?

- A. to make a subnet its own VLAN.
- B. to expand an existing subnet .
- C. to make a subnet public.
- D. to prevent wasting IP addresses

**Correct Answer:** B

**QUESTION 121**

What DNS entry to use for WLC with firmware version 6.0 or later so an Access Point can determine the controller's IP address?

- A. DNS A record with controller's hostname
- B. DHCP option 43
- C. cisco-capwap-controller
- D. cisco-lwapp-controller

**Correct Answer:** C

**QUESTION 122**

What will extend a trust boundary (there is switch interface configuration with separate voice VLAN and data VLAN configured where the phone is connected to, also small diagram showing endpoint (host), IP Phone, Access Switch, Distribution Switch, Core Switch and Data Centre Aggregation switch)?

- A. Multiple layers PC
- B. IP Phone
- C. Access Switch
- D. Distribution Switch
- E. Core Switch

**Correct Answer:** B

**QUESTION 123**

A design engineer must send management information messages across the public internet. What solution provides a secure and encrypted method for passing these messages?

## [Download Full Version 200-310 Exam Dumps\(Updated in Feb/2023\)](#)

- A. SNMP v3
- B. NetFlow v9
- C. Syslog Traps
- D. Secure Shell v2
- E. SNMP v2

**Correct Answer:** A

### **QUESTION 124**

Which two benefits are realized by establishing virtualization in a campus network? (Choose two)

- A. enables path isolation
- B. enhances network agility
- C. consolidates applications
- D. enables unlimited scalability
- E. reduces network bandwidth

**Correct Answer:** BD

#### **Explanation:**

[https://www.cisco.com/c/en/us/solutions/collateral/enterprise-networks/network-virtualization-solutions/net\\_brochure0900aecd804a17db.html](https://www.cisco.com/c/en/us/solutions/collateral/enterprise-networks/network-virtualization-solutions/net_brochure0900aecd804a17db.html)

### **QUESTION 125**

An organization needs a WAN Transport technology that meets these criteria:

- has a low initial cost
- provides low-to-medium BW
- has medium-to-high latency and jitter

Which technology should the organization use?

- A. DSL
- B. X.25
- C. ISDN
- D. wireless
- E. analog modem

**Correct Answer:** A

### **QUESTION 126**

Which virtualization deployment an engineer will execute to separate to accomplish security policies?

- A. Same corporate Network with NAC capabilities.
- B. Something using VLANs
- C. dont remember

**Correct Answer:** B

### **QUESTION 127**

When considering the three VoIP design models - single site, centralized multisite, and distributed

[200-310 Exam Dumps](#)   [200-310 PDF Dumps](#)   [200-310 VCE Dumps](#)   [200-310 Q&As](#)

<https://www.ensurepass.com/200-310.html>

multisite - which question below would help to eliminate one of the options?

- A. Will the switches be required to provide inline power?
- B. Will users need to make offsite calls, beyond the enterprise?
- C. Will users require applications such as voice mail and interactive voice response?
- D. Are there users whose only enterprise access is via a QoS-enabled WAN?

**Correct Answer:** D

**QUESTION 128**

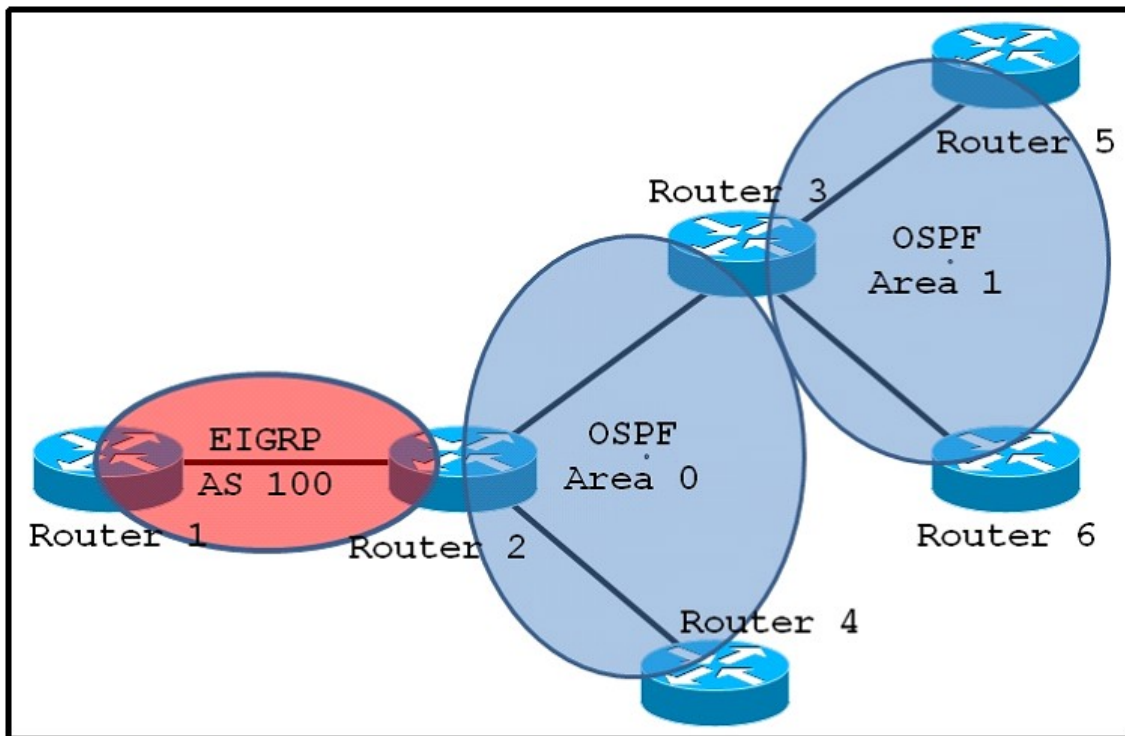
Which IP address can be routed to cross the public Internet?

- A. 10.31.1.1
- B. 192.168.32.1
- C. 172.32.1.1
- D. 169.254.32.1

**Correct Answer:** C

**QUESTION 129**

Refer to the exhibit. On which router should you configure redistribution?



- A. Router 1
- B. Router 2
- C. Router 3
- D. Router 4
- E. Router 5

**Correct Answer:** B

**QUESTION 130**

Which statement about VSS is true?

- A. it can maintain the topology independently of STP
- B. it requires HSRP.
- C. it requires STP for link redundancy
- D. it has two control planes.

**Correct Answer:** A

**QUESTION 131**

What tool would you use to capture, segregate and analyse IP traffic?

- A. Protocol Analyser
- B. NetFlow

**Correct Answer:** B

**QUESTION 132**

Which IPv6 feature enables routing to distribute connection requests to the nearest content server?

- A. Link-local
- B. Site-local
- C. Anycast
- D. Multicast
- E. Global aggregatable

**Correct Answer:** C

**Explanation:**

Any cast is a network addressing and routing methodology in which data grams from a single sender are routed to the topologically nearest node in a group of potential receivers all identified by the same destination address.

<http://en.wikipedia.org/wiki/Anycast>

**QUESTION 133**

Cisco FabricPath brings the benefits of routing protocols to Layer 2 network Ethernet environments. What are two advantages of using Cisco FabricPath technology? (Choose two.)

- A. Cisco FabricPath provides MAC address scalability with conversational learning.
- B. Loop mitigation is provided by the TTL field in the frame.
- C. Cisco FabricPath technology is supported in all Cisco platforms and can replace legacy Ethernet in all campus networks.
- D. Cisco FabricPath relies on OSPF to support Layer 2 forwarding between switches, which allows load balancing between redundant paths.
- E. Cisco FabricPath is IETF-standard and is not used with Cisco products.

## [Download Full Version 200-310 Exam Dumps\(Updated in Feb/2023\)](#)

**Correct Answer:** AB

### QUESTION 134

What Cisco product is designed to improve the performance of Windows file and exchange services in remote data centers?

- A. Application Control Engine
- B. Wide Area Application Services
- C. Cisco Application Policy Infrastructure Controller
- D. Cisco Prime Network Services Controller

**Correct Answer:** B

### QUESTION 135

DRAG DROP

Drag the STP toolkit term on the left to the definition on the right.

PortFast	Cuts convergence time by MaxAge for indirect failure
UplinkFast	Disables port if a BPDU is received
BackboneFast	Bypasses the listening and learning phases
Loop Guard	Prevents sending or receiving BPDUs
Root Guard	Prevents forwarding in the absence of BPDUs
BPDU Guard	Provides 3- to 5-second convergence after link failure
BPDU Filter	Prevents external switches from becoming the root

**Correct Answer:**