

QUESTION 279

An administrator must secure the WLC from receiving spoofed association requests. Which steps must be taken to configure the WLC to restrict the requests and force the user to wait 10 ms to retry an association request?

- A. Enable Security Association Teardown Protection and set the SA Query timeout to 10
- B. Enable MAC filtering and set the SA Query timeout to 10
- C. Enable 802.1x Layer 2 security and set the Comeback timer to 10
- D. Enable the Protected Management Frame service and set the Comeback timer to 10

Correct Answer: C

QUESTION 280

Which type of traffic is sent with pure IPsec?

- A. broadcast packets from a switch that is attempting to locate a MAC address at one of several remote sites
- B. multicast traffic from a server at one site to hosts at another location
- C. spanning-tree updates between switches that are at two different sites
- D. unicast messages from a host at a remote site to a server at headquarters

Correct Answer: D

Explanation:

"The original poster makes a correct observation that EIGRP does not work in a pure IPSEC environment. IPSEC was designed to process unicast traffic.

QUESTION 281

An engineer configures interface Gi1/0 on the company PE router to connect to an ISP. Neighbor discovery is disabled. Which action is necessary to complete the configuration if the ISP uses third-party network devices?

```
interface Gi1/0
description HQ_DC3978-87297
duplex full
speed 100
negotiation auto
lldp transmit
lldp receive
```

- A. Enable LLDP globally
- B. Disable autonegotiation
- C. Disable Cisco Discovery Protocol on the interface
- D. Enable LLDP-MED on the ISP device

Correct Answer: D

QUESTION 282

Refer to the exhibit. What action establishes the OSPF neighbor relationship without forming an adjacency?

```
R1# sh ip ospf int gig0/0
Gig0/0 is up, line protocol is up
  Internet Address 10.201.24.8/28, Area 1, Attached via Network Statement
  Process ID 100, Router ID 192.168.1.1, Network Type BROADCAST, Cost: 1
  Topology-MTID      Cost      Disabled      Shutdown      Topology Name
    0                1          no            no            Base
  Transmit Delay is 1 sec, State DR, Priority 1
  Designated Router (ID) 192.168.1.1, Interface address 10.201.24.8
  No backup designated router on this network
  Timer intervals configured, Hello 10, Dead 40, Wait 40, Retransmit 5
    oob-resync timeout 40
    Hello due in 00:00:07

R2#sh ip ospf int gig0/0
gig0/0 is up, line protocol is up
  Internet Address 10.201.24.1/28, Area 1
  Process ID 100, Router ID 172.16.1.1, Network Type BROADCAST, Cost: 1
  Transmit Delay is 1 sec, State DR, Priority 1
  Designated Router (ID) 172.16.1.1, Interface address 10.201.24.1
  No backup designated router on this network
  Timer intervals configured, Hello 20, Dead 80, Wait 80, Retransmit 5
```

- A. modify hello interval
- B. modify process ID
- C. modify priority
- D. modify network type

Correct Answer: A

QUESTION 283

An engineer configured an OSPF neighbor as a designated router. Which state verifies the designated router is in the proper mode?

- A. Exchange
- B. 2-way
- C. Full
- D. Init

Correct Answer: C

QUESTION 284

Which network plane is centralized and manages routing decisions?

- A. policy plane
- B. management plane
- C. control plane
- D. data plane

Correct Answer: C

QUESTION 285

Using direct sequence spread spectrum, which three 2.4-GHz channels are used to limit collisions?

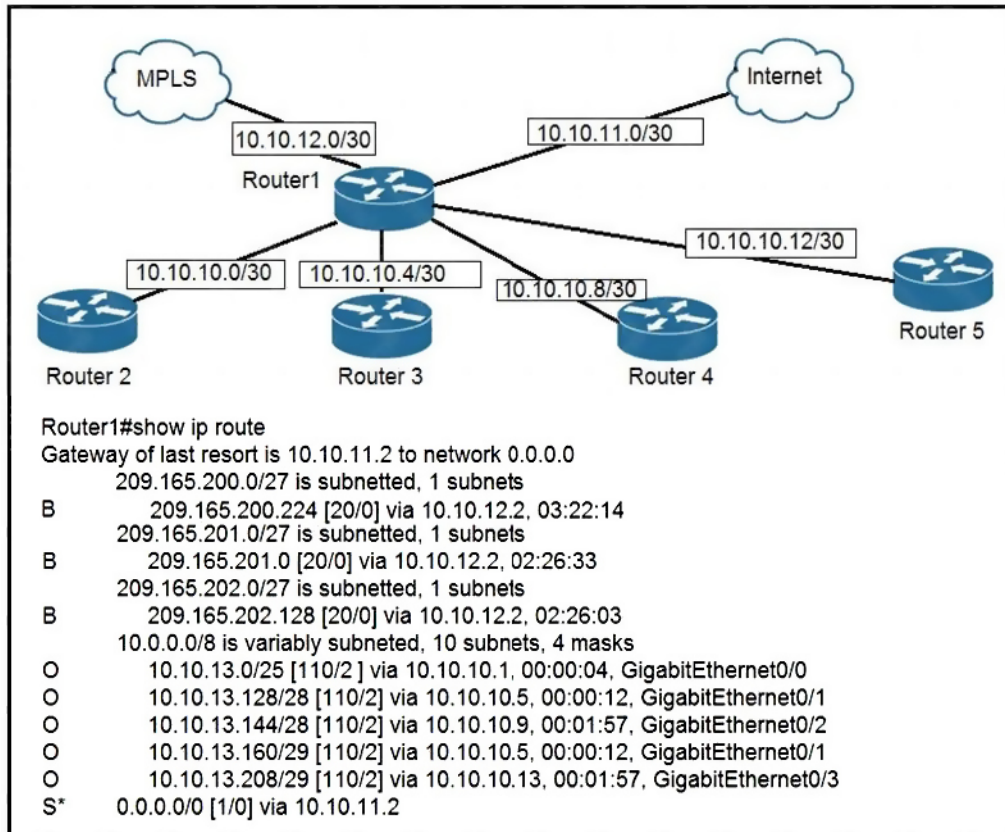
- A. 1,6,11
- B. 1,5,10

- C. 1,2,3
- D. 5,6,7

Correct Answer: A

QUESTION 286

Refer to the exhibit. To which device does Router1 send packets that are destined to host 10.10.13.165?



- A. Router2
- B. Router3
- C. Router4
- D. Router5

Correct Answer: B

QUESTION 287

What does an SDN controller use as a communication protocol to relay forwarding changes to a southbound API?

- A. OpenFlow
- B. Java
- C. REST

D. XML

Correct Answer: A

QUESTION 288

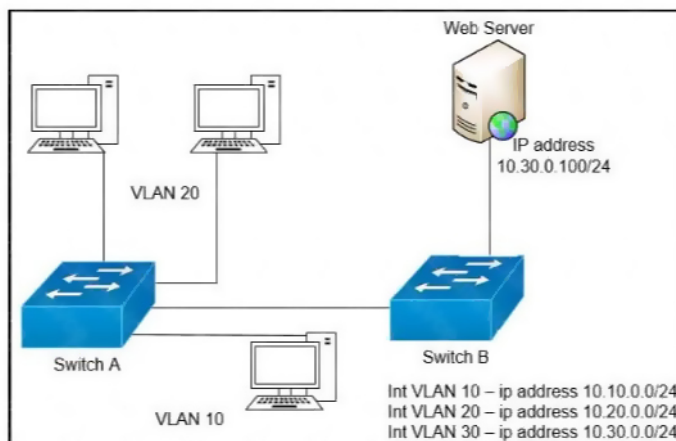
An office has 8 floors with approximately 30-40 users per floor. What command must be configured on the router Switched Virtual Interface to use address space efficiently?

- A. ip address 192.168.0.0 255.255.0.0
- B. ip address 192.168.0.0 255.255.254.0
- C. ip address 192.168.0.0 255.255.255.128
- D. ip address 192.168.0.0 255.255.255.224

Correct Answer: B

QUESTION 289

Refer to the exhibit. A network engineer must block access for all computers on VLAN 20 to the web server via HTTP. All other computers must be able to access the web server. Which configuration when applied to switch A accomplishes this task?



config t
ip access-list extended wwwblock
deny tcp any host 10.30.0.100 eq 80
int vlan 10
ip access-group wwwblock in

config t
ip access-list extended wwwblock
deny tcp any host 10.30.0.100 eq 80
permit ip any any
int vlan 20
ip access-group wwwblock in

config t
ip access-list extended wwwblock
permit ip any any
deny tcp any host 10.30.0.100 eq 80
int vlan 30
ip access-group wwwblock in

config t
ip access-list extended wwwblock
permit ip any any
deny tcp any host 10.30.0.100 eq 80
int vlan 20
ip access-group wwwblock in

- A. Option A
- B. Option B
- C. Option C
- D. Option D

Correct Answer: B

QUESTION 290

DRAG DROP

Drag and drop the descriptions from the left onto the configuration-management technologies on the right.

fundamental configuration elements are stored in a manifest	Ansible
uses TCP port 10002 for configuration push jobs	
uses Ruby for fundamental configuration elements	Chef
uses SSH for remote device communication	
uses TCP 8140 for communication	Puppet
uses YAML for fundamental configuration elements	

Correct Answer: