

```
SiteA#show interface TenGigabitEthernet0/1/0
TenGigabitEthernet0/1/0 is up, line protocol is up
  Hardware is BUILT-IN-EPA-8x10G, address is 780c.f02a.db91 (bia 780a.f02b.db91)
  Description: Connection to SiteB
  Internet address is 10.10.10.1/30
  MTU 8146 bytes, BW 10000000 Kbit/sec, DLY 10 usec,
    reliability 166/255, txload 1/255, rxload 1/255
  Full Duplex, 10000Mbps, link type is force-up, media type is SFP-LR
  5 minute input rate 264797000 bits/sec, 26672 packets/sec
  5 minute output rate 122464000 bits/sec, 15724 packets/sec

SiteB#show interface TenGigabitEthernet0/1/0
TenGigabitEthernet0/1/0 is up, line protocol is up
  Hardware is BUILT-IN-EPA-8x10G, address is 780c.f02c.db26 (bia 780c.f02c.db26)
  Description: Connection to SiteA
  Internet address is 10.10.10.2/30
  MTU 8146 bytes, BW 10000000 Kbit/sec, DLY 10 usec,
    reliability 255/255, txload 1/255, rxload 1/255
  Full Duplex, 10000Mbps, link type is force-up, media type is SFP-LR
  5 minute input rate 122464000 bits/sec, 15724 packets/sec
  5 minute output rate 264797000 bits/sec, 26672 packets/sec
```

- A. Interface errors are incrementing
- B. An incorrect SFP media type was used at SiteA
- C. High usage is causing high latency
- D. The sites were connected with the wrong cable type

Correct Answer: A

QUESTION 271

Which statement about Link Aggregation when implemented on a Cisco Wireless LAN Controller is true?

- A. To pass client traffic two or more ports must be configured.
- B. The EtherChannel must be configured in "mode active"
- C. When enabled the WLC bandwidth drops to 500 Mbps
- D. One functional physical port is needed to pass client traffic

Correct Answer: D

Explanation:

https://www.cisco.com/c/en/us/td/docs/wireless/controller/8-2/config-guide/b_cg82/b_cg82_chapter_010101011.html

QUESTION 272

Refer to the exhibit. Which action is expected from SW1 when the untagged frame is received on the GigabitEthernet0/1 interface?

```
SW1#show run int gig 0/1
interface GigabitEthernet0/1
  switchport access vlan 11
  switchport trunk allowed vlan 1-10
  switchport trunk encapsulation dot1q
  switchport trunk native vlan 5
  switchport mode trunk
  speed 1000
  duplex full
```

- A. The frame is processed in VLAN 5.
- B. The frame is processed in VLAN 11
- C. The frame is processed in VLAN 1
- D. The frame is dropped

Correct Answer: A

QUESTION 273

What is a role of access points in an enterprise network?

- A. connect wireless devices to a wired network
- B. support secure user logins to devices or the network
- C. integrate with SNMP in preventing DDoS attacks
- D. serve as a first line of defense in an enterprise network

Correct Answer: A

QUESTION 274

How do AAA operations compare regarding user identification, user services and access control?

- A. Authorization provides access control and authentication tracks user services
- B. Authentication identifies users and accounting tracks user services
- C. Accounting tracks user services, and authentication provides access control
- D. Authorization identifies users and authentication provides access control

Correct Answer: B

QUESTION 275

Which command must be entered when a device is configured as an NTP server?

- A. ntp authenticate
- B. ntp server
- C. ntp peer

D. ntp master

Correct Answer: D

Explanation:

To configure a Cisco device as an Authoritative NTP Server, use the ntp master [stratum] command. To configure a Cisco device as a NTP client, use the command ntp server <IP address>. For example: Router(config)#ntp server 192.168.1.1. This command will instruct the router to query 192.168.1.1 for the time.

QUESTION 276

DRAG DROP

Drag the descriptions of device management from the left onto the types of device management on the right.

implements changes via an SSH terminal

manages device configurations on a per-device basis

monitors the cloud for software updates

security is managed near the perimeter of the network with firewalls, VPNs, and IPS

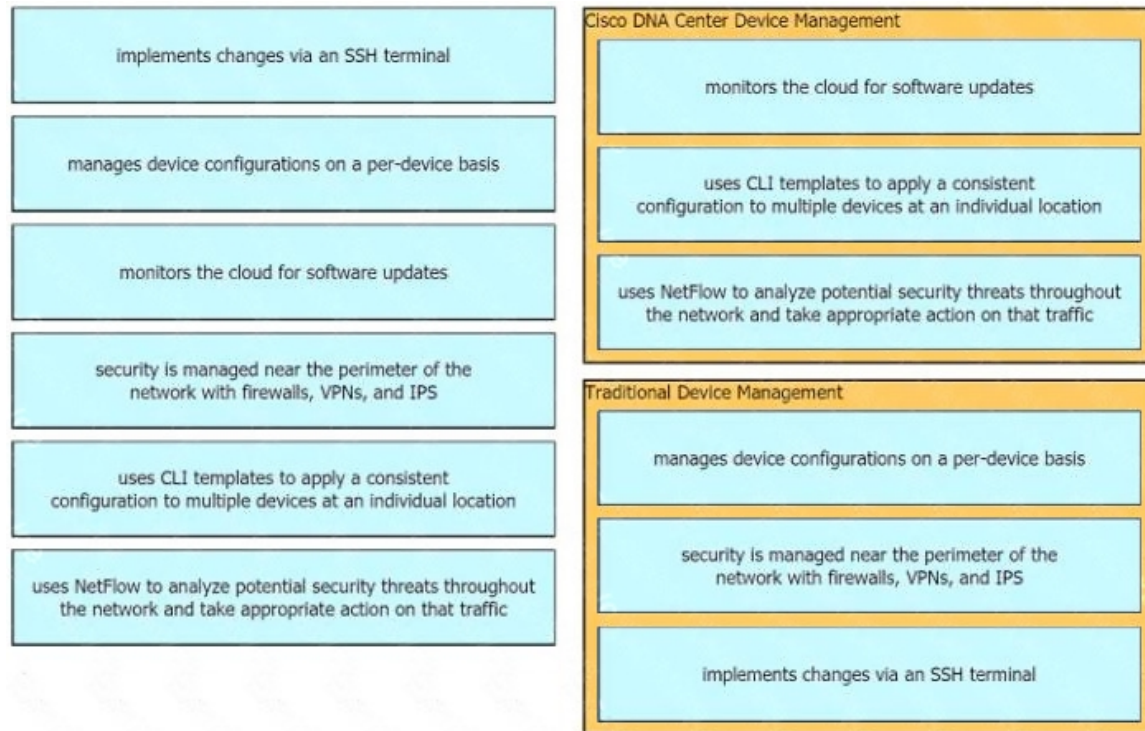
uses CLI templates to apply a consistent configuration to multiple devices at an individual location

uses NetFlow to analyze potential security threats throughout the network and take appropriate action on that traffic

Cisco DNA Center Device Management

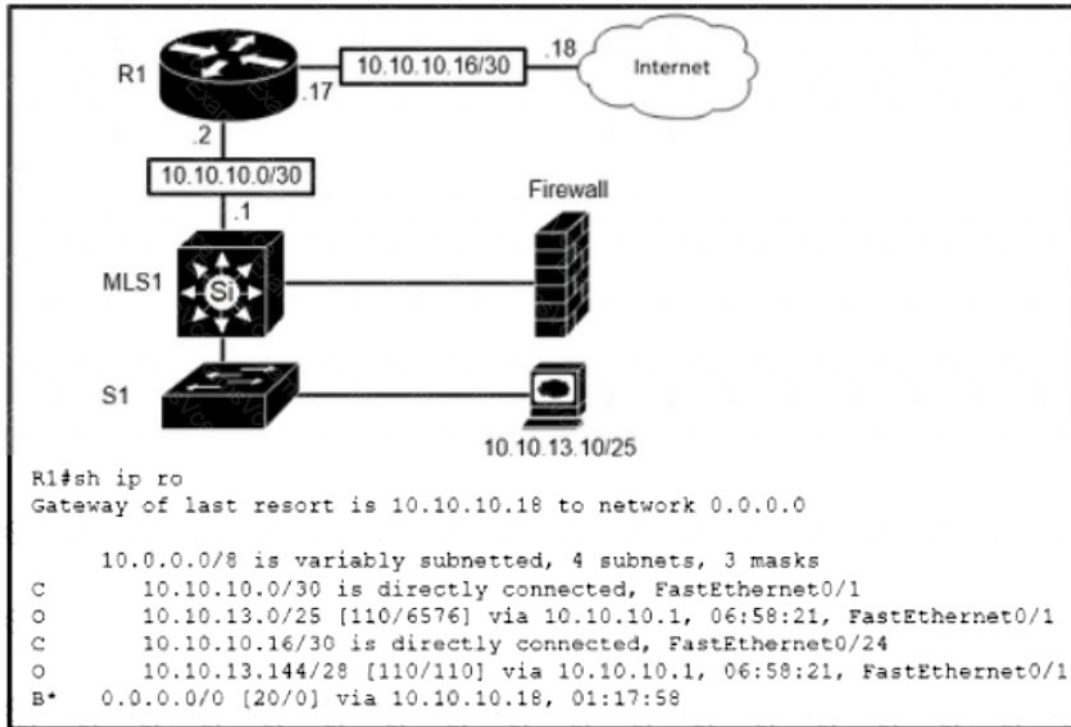
Traditional Device Management

Correct Answer:



QUESTION 277

Refer to the exhibit. Which route type is configured to reach the internet?

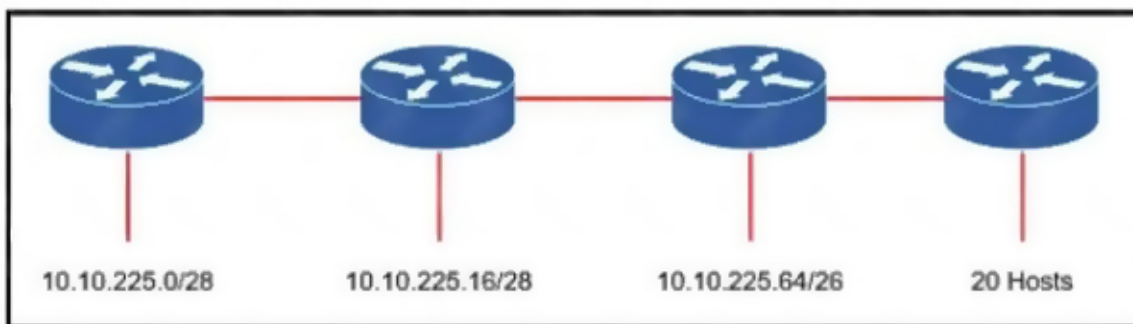


- A. host route
- B. default route
- C. floating static route
- D. network route

Correct Answer: B

QUESTION 278

Refer to the exhibit. An engineer must add a subnet for a new office that will add 20 users to the network. Which IPv4 network and subnet mask combination does the engineer assign to minimize wasting addresses?



- A. 10.10.225.48 255.255.255.240
- B. 10.10.225.32 255.255.255.240
- C. 10.10.225.48 255.255.255.224
- D. 10.10.225.32 255.255.255.224

Correct Answer: D