

[Download Full Version 200-301 Exam Dumps \(Updated in Feb/2023\)](#)

802.11a	Operates in the 2.4 GHz and 5 GHz bands.
802.11ac	Operates in the 2.4 GHz band only and supports a maximum data rate of 54 Mbps.
802.11b	Operates in the 5 GHz band only and supports a maximum data rate that can exceed 100 Mbps.
802.11g	Supports a maximum data rate of 11 Mbps.
802.11n	Operates in the 5 GHz band only and supports a maximum data rate of 54 Mbps.

Correct Answer:

802.11a	802.11n
802.11ac	802.11g
802.11b	802.11ac
802.11g	802.11b
802.11n	802.11a

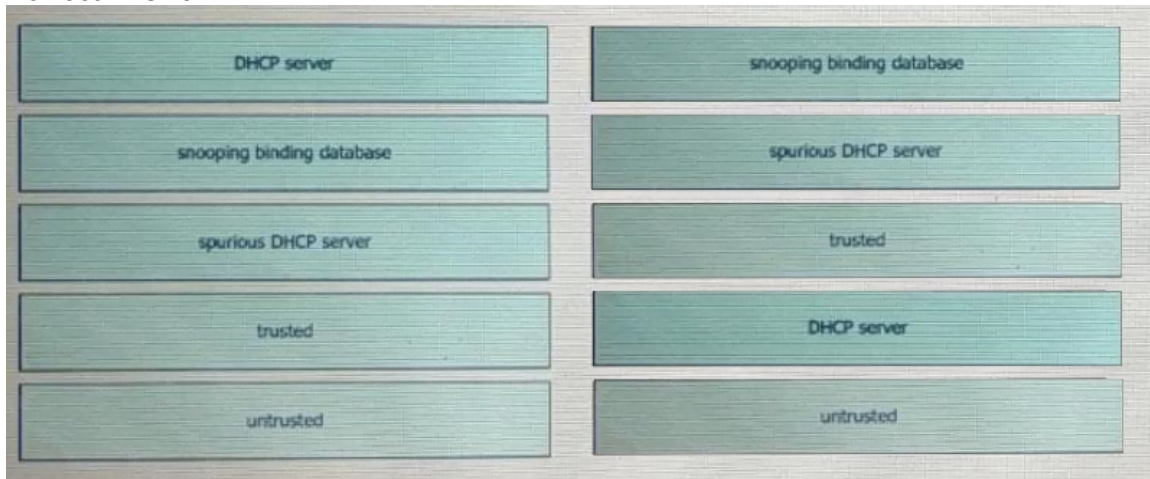
QUESTION 238

DRAG DROP

Drag and drop the DHCP snooping terms from the left onto the descriptions on the right.

DHCP server	list of hosts on the network that are unknown to the administrative domain
snooping binding database	network component that propagates IP addresses to hosts on the network
spurious DHCP server	internal device under the control of the network administrator
trusted	unknown DHCP server within an administrative domain
untrusted	default state of all interfaces

Correct Answer:



QUESTION 239

In software-defined architecture, which plane handles switching for traffic through a Cisco router?

- A. Control
- B. Management
- C. Data
- D. application

Correct Answer: C

Explanation:

Data plane--Handles all the data traffic. The basic functionality of a Cisco NX-OS device is to forward packets from one interface to another. The packets that are not meant for the switch itself are called the transit packets. These packets are handled by the data plane

QUESTION 240

What are two similarities between UTP Cat 5e and Cat 6a cabling? (Choose two.)

- A. Both operate at a frequency of 500 MHz.
- B. Both support runs of up to 55 meters.
- C. Both support runs of up to 100 meters.
- D. Both support speeds of at least 1 Gigabit.
- E. Both support speeds up to 10 Gigabit.

Correct Answer: CD

QUESTION 241

An engineer is configuring data and voice services to pass through the same port. The designated switch interface fastethernet0/1 must transmit packets using the same priority for data when they are received from the access port of the IP phone. Which configuration must be used?

- A.

```
interface fastethernet0/1
switchport priority extend cos 7
```
- B.

```
interface fastethernet0/1
switchport voice vlan untagged
```

- C. `interface fastethernet0/1`
`switchport voice vlan dot1p`
- D. `interface fastethernet0/1`
`switchport priority extend trust`

- A. Option A
B. Option B
C. Option C
D. Option D

Correct Answer: A

QUESTION 242

Which protocol requires authentication to transfer a backup configuration file from a router to a remote server?

- A. DTP
B. FTP
C. SMTP
D. TFTP

Correct Answer: B

QUESTION 243

Refer to the exhibit. If configuring a static default route on the router with the ip route 0.0.0.0 0.0.0.0 10.13.0.1 120 command how does the router respond?

```
Gateway of last resort is 10.12.0.1 to network 0.0.0.0

O*E2  0.0.0.0/0 [110/1] via 10.12.0.1, 00:00:01, GigabitEthernet0/0
10.0.0.0/8 is variably subnetted, 2 subnets, 2 masks
C     10.0.0.0/24 is directly connected, GigabitEthernet0/0
L     10.0.0.2/32 is directly connected, GigabitEthernet0/0
C     10.13.0.0/24 is directly connected, GigabitEthernet0/1
L     10.13.0.2/32 is directly connected, GigabitEthernet0/1
```

- A. It ignores the new static route until the existing OSPF default route is removed
B. It immediately replaces the existing OSPF route in the routing table with the newly configured static route
C. It starts load-balancing traffic between the two default routes
D. It starts sending traffic without a specific matching entry in the routing table to GigabitEthernet0/1

Correct Answer: A

Explanation:

Our new static default route has the Administrative Distance (AD) of 120, which is bigger than the AD of OSPF External route (O*E2) so it will not be pushed into the routing table until the current OSPF External route is removed. For your information, if you don't type the AD of 120 (using the command "ip route 0.0.0.0 0.0.0 10.13.0.1") then the new static default route would replace the OSPF default route as the default AD of static route is 1. You will see such line in the routing table: S* 0.0.0.0/0 [1/0] via 10.13.0.1

QUESTION 244

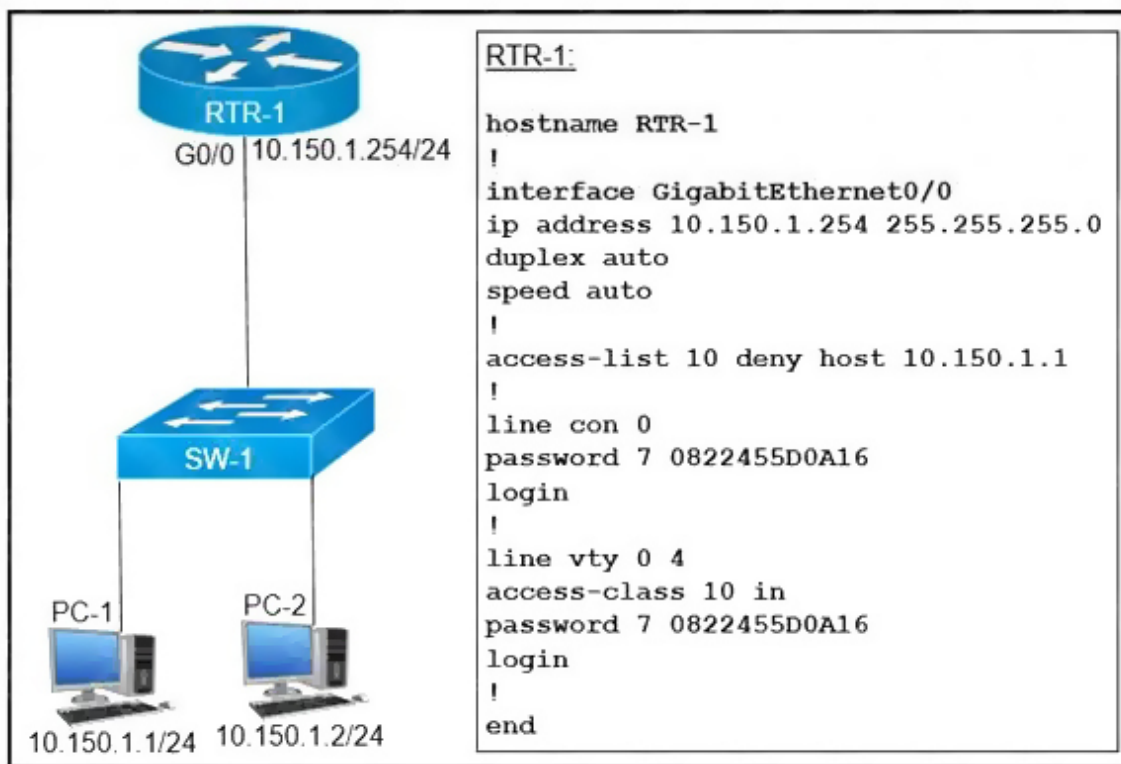
What are two benefits of FHRPs? (Choose two.)

- A. They prevent (oops in the Layer 2 network.
- B. They allow encrypted traffic.
- C. They are able to bundle multiple ports to increase bandwidth
- D. They enable automatic failover of the default gateway.
- E. They allow multiple devices to serve as a single virtual gateway for clients in the network

Correct Answer: DE

QUESTION 245

Refer to the exhibit. An access list is created to deny Telnet access from host PC-1 to RTR-1 and allow access from all other hosts. A Telnet attempt from PC-2 gives this message: "% Connection refused by remote host". Without allowing Telnet access from PC-1, which action must be taken to permit the traffic?



- A. Add the access-list 10 permit any command to the configuration
- B. Remove the access-class 10 in command from line vty 0.4.
- C. Add the ip access-group 10 out command to interface g0/0.
- D. Remove the password command from line vty 0 4.

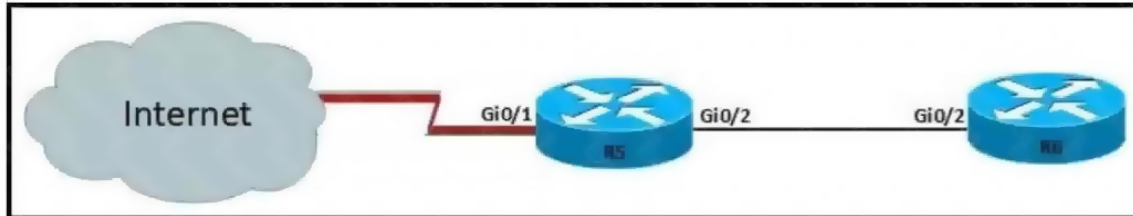
Correct Answer: A

QUESTION 246

Refer to the exhibit. For security reasons, automatic neighbor discovery must be disabled on the R5 Gi0/1 interface. These tasks must be completed:

- Disable all neighbor discovery methods on R5 interface Gi0/1.
- Permit neighbor discovery on R5 interface Gi0/2.
- Verify there are no dynamically learned neighbors on R5 interface Gi0/1.
- Display the IP address of R6's interface Gi0/2.

Which configuration must be used?



- ☐ R5(config)#int Gi0/1
R5(config-if)#no cdp run
R5(config-if)#exit
R5(config)#lldp run
R5(config)#cdp enable
R5#sh cdp neighbor
R5#sh lldp neighbor
- ☒ R5(config)#int Gi0/1
R5(config-if)#no cdp enable
R5(config-if)#exit
R5(config)#no lldp run
R5(config)#cdp run
R5#sh cdp neighbor
R5#sh lldp neighbor
- ☐ R5(config)#int Gi0/1
R5(config-if)#no cdp enable
R5(config-if)#exit
R5(config)#no lldp run
R5(config)#cdp run
R5#sh cdp neighbor detail
R5#sh lldp neighbor
- ☐ R5(config)#int Gi0/1
R5(config-if)#no cdp enable
R5(config-if)#exit
R5(config)#lldp run
R5(config)#no cdp run
R5#sh cdp neighbor detail
R5#sh lldp neighbor

- A. Option A
B. Option B
C. Option C
D. Option D

Correct Answer: C

QUESTION 247

Which set of action satisfy the requirement for multifactor authentication?

- A. The user swipes a key fob, then clicks through an email link
B. The user enters a user name and password, and then clicks a notification in an authentication app on a mobile device