

Correct Answer: B

QUESTION 223

What are two functions of an SDN controller? (Choose two)

- A. Layer 2 forwarding
- B. coordinating VTNs
- C. tracking hosts
- D. managing the topology
- E. protecting against DDoS attacks

Correct Answer: BD

QUESTION 224

Which IPv6 address block sends packets to a group address rather than a single address?

- A. 2000::/3
- B. FC00::/7
- C. FE80::/10
- D. FF00::/8

Correct Answer: D

Explanation:

FF00::/8 is used for IPv6 multicast and this is the IPv6 type of address the question wants to ask. FE80::/10 range is used for link-local addresses. Link-local addresses only used for communications within the local subnetwork (automatic address configuration, neighbor discovery, router discovery, and by many routing protocols). It is only valid on the current subnet. It is usually created dynamically using a link-local prefix of FE80::/10 and a 64-bit interface identifier (based on 48-bit MAC address).

QUESTION 225

Refer to the exhibit. Which password must an engineer use to enter the enable mode?

```
Atlanta#conf t
Enter configuration commands, one per line. End with CNTL/Z.
Atlanta(config)#aaa new-model
Atlanta(config)#aaa authentication login default local
Atlanta(config)#line vty 0 4
Atlanta(config-line)#login authentication default
Atlanta(config-line)#exit
Atlanta(config)#username ciscoadmin password adminadmin123
Atlanta(config)#username ciscoadmin privilege 15
Atlanta(config)#enable password cisco123
Atlanta(config)#enable secret testing1234
Atlanta(config)#end
```

- A. adminadmin123
- B. default
- C. testing 1234
- D. cisco123

Correct Answer: C

Explanation:

If neither the enable password command nor the enable secret command is configured, and if there is a line password configured for the console, the console line password serves as the enable password for all VTY sessions -> The "enable secret" will be used first if available, then

"enable password" and line password.

QUESTION 226

Which command is used to specify the delay time in seconds for LLDP to initialize on any interface?

- A. lldp timer
- B. lldp holdtimt
- C. lldp reinit
- D. lldp tlv-select

Correct Answer: C

Explanation:

https://www.cisco.com/c/en/us/td/docs/switches/lan/catalyst2960/software/release/12-2_37_ey/configuration/guide/scg/swlldp.pdf

- lldp holdtime seconds: Specify the amount of time a receiving device should hold the information from your device before discarding it
- lldp reinit delay: Specify the delay time in seconds for LLDP to initialize on an interface
- lldp timer rate: Set the sending frequency of LLDP updates in seconds

QUESTION 227

What is a similarity between OM3 and OM4 fiber optic cable?

- A. Both have a 50 micron core diameter
- B. Both have a 9 micron core diameter
- C. Both have a 62.5 micron core diameter
- D. Both have a 100 micron core diameter

Correct Answer: A

QUESTION 228

What does a switch use to build its MAC address table?

- A. VTP
- B. DTP
- C. egress traffic
- D. ingress traffic

Correct Answer: D

QUESTION 229

How are VLAN hopping attacks mitigated?

- A. enable dynamic ARP inspection
- B. manually implement trunk ports and disable DTP
- C. activate all ports and place in the default VLAN
- D. configure extended VLANs

Correct Answer: B

QUESTION 230

What does a router do when configured with the default DNS lookup settings, and a URL is entered on the CLI?

- A. initiates a ping request to the URL
- B. prompts the user to specify the desired IP address
- C. continuously attempts to resolve the URL until the command is cancelled
- D. sends a broadcast message in an attempt to resolve the URL

Correct Answer: D

QUESTION 231

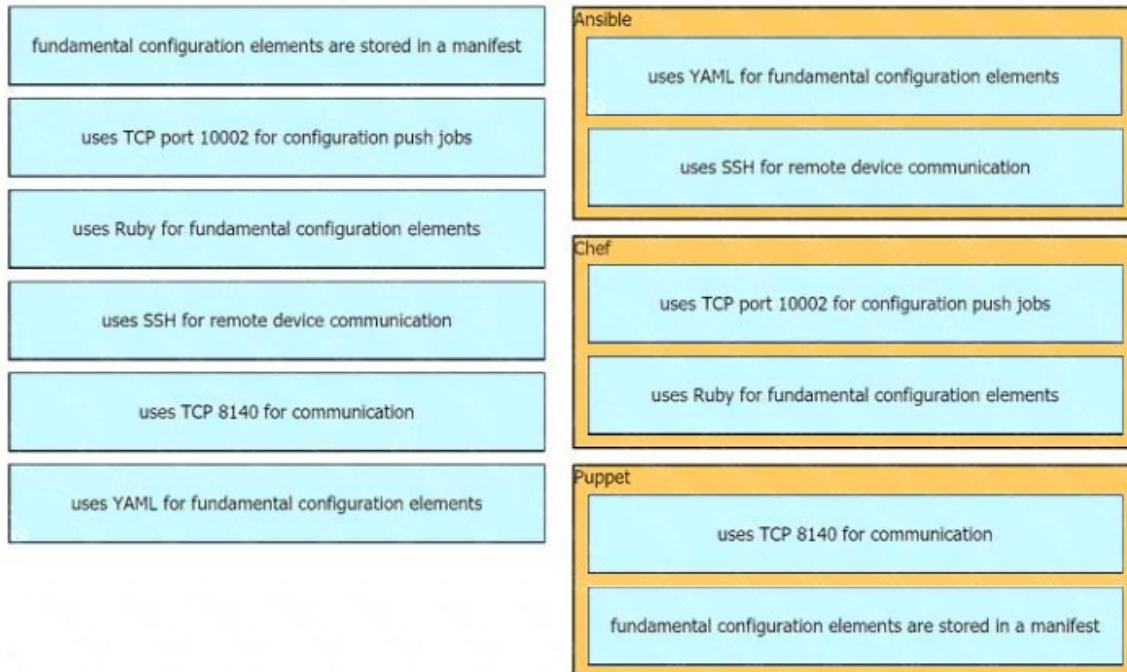
DRAG DROP

Drag drop the descriptions from the left onto the correct configuration-management technologies on the right.

fundamental configuration elements are stored in a manifest	Ansible
uses TCP port 10002 for configuration push jobs	
uses Ruby for fundamental configuration elements	Chef
uses SSH for remote device communication	
uses TCP 8140 for communication	Puppet
uses YAML for fundamental configuration elements	

Correct Answer:

[Download Full Version 200-301 Exam Dumps \(Updated in Feb/2023\)](#)



QUESTION 232

What criteria is used first during the root port selection process?

- A. local port ID
- B. lowest path cost to the root bridge
- C. lowest neighbor's bridge ID
- D. lowest neighbor's port ID

Correct Answer: B

QUESTION 233

What is a DNS lookup operation?

- A. DNS server pings the destination to verify that it is available
- B. serves requests over destination port 53
- C. DNS server forwards the client to an alternate IP address when the primary IP is down
- D. responds to a request for IP address to domain name resolution to the DNS server

Correct Answer: D

QUESTION 234

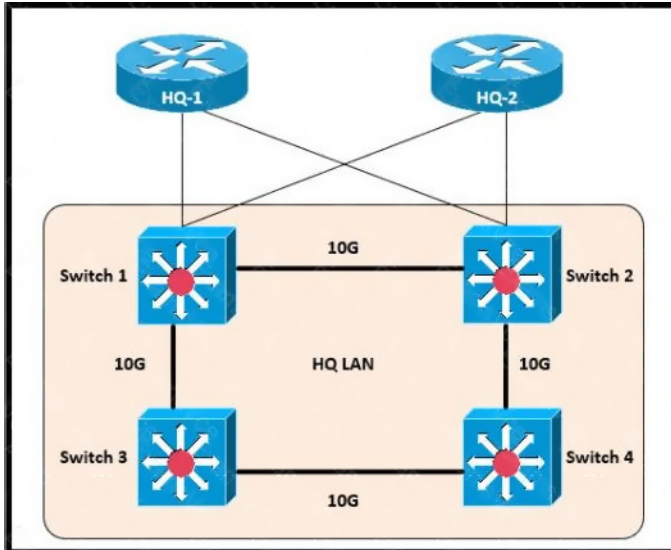
What is the benefit of using FHRP?

- A. reduced management overhead on network routers
- B. balancing traffic across multiple gateways in proportion to their loads
- C. higher degree of availability
- D. reduced ARP traffic on the network

Correct Answer: C

QUESTION 235

Refer to the exhibit. Which switch becomes the root of the spanning tree for VLAN 110?



Switch 1
VLAN 110 - 32778 0018.184e.3c00
Switch 2
VLAN 110 - 24586 001a.e3ff.a680
Switch 3
VLAN 110 - 28682 0022.55cf.cc00
Switch 4
VLAN 110 - 64000 0e38.7363.657f

- A. Switch 1
- B. Switch 2
- C. Switch 3
- D. Switch 4

Correct Answer: B

QUESTION 236

How does a switch process a frame received on Fa0/1 with the destination MAC address of 0e38.7363.657b when the table is missing the address?

- A. It drops the frame immediately.
- B. It forwards the frame back out of interface Fa0/1.
- C. It floods the frame to all interfaces except Fa0/1.
- D. It holds the frame until the MAC address timer expires and then drops the frame.

Correct Answer: C

QUESTION 237

DRAG DROP

Drag and drop the 802.11 wireless standards from the left onto the matching statements on the right.