

- B. platform-as-a-service
- C. business process as service to support different types of service
- D. software-as-a-service

Correct Answer: D

QUESTION 26

What is an appropriate use for private IPv4 addressing?

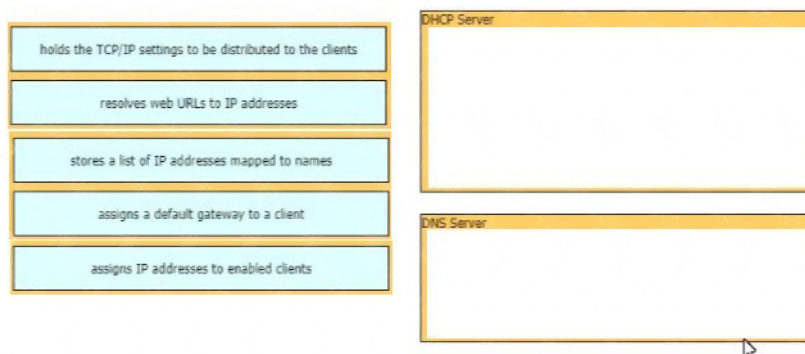
- A. on the public-facing interface of a firewall
- B. to allow hosts inside to communicate in both directions with hosts outside the organization
- C. on internal hosts that stream data solely to external resources
- D. on hosts that communicates only with other internal hosts

Correct Answer: D

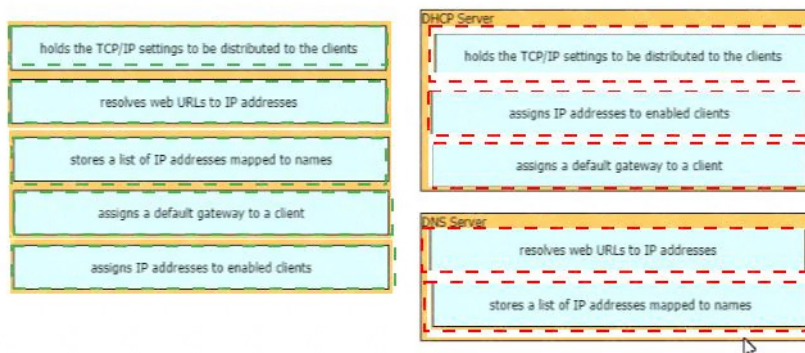
QUESTION 27

DRAG DROP

Drag and drop the functions from the left onto the correct network components on the right



Correct Answer:



QUESTION 28

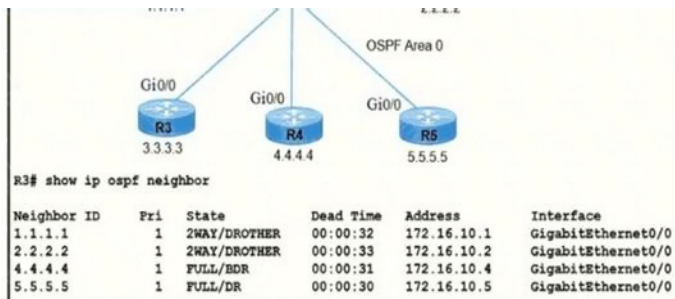
An engineer must configure Interswitch VLAN communication between a Cisco switch and a third-party switch. Which action should be taken?

- A. configure IEEE 802.1p
- B. configure IEEE 802.1q
- C. configure ISL
- D. configure DSCP

Correct Answer: B

QUESTION 29

Refer to the exhibit. R5 is the current DR on the network, and R4 is the BDR. Their interfaces are flapping, so a network engineer wants the OSPF network to elect a different DR and BDR. Which set of configurations must the engineer implement?



- A. R4(config)#interface gi0/0
R4(config-if)#ip ospf priority 20

R5(config)#interface gi0/0
R5(config-if)#ip ospf priority 10

R2(config)#interface gi0/0
R2(config-if)#ip ospf priority 259
- B. R3(config)#interface gi0/0
R3(config-if)#ip ospf priority 256
- C. R5(config)#interface gi0/0
R5(config-if)#ip ospf priority 120

R4(config)#interface gi0/0
R4(config-if)#ip ospf priority 110
- D. R3(config)#interface gi0/0
R3(config-if)#ip ospf priority 255

R2(config)#interface gi0/0
R2(config-if)#ip ospf priority 240

Correct Answer: D

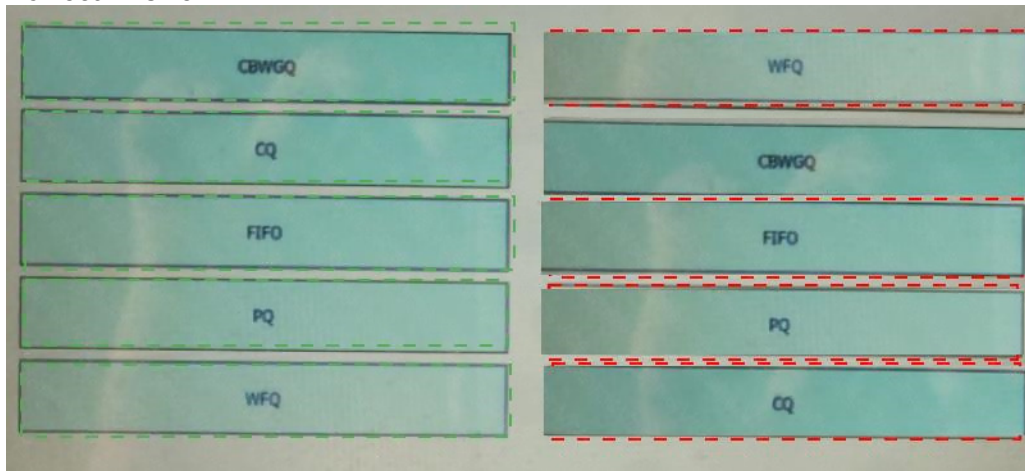
QUESTION 30

DRAG DROP

Drag and drop the QoS congestion management terms from the left onto the description on the right.

CBWGW	places packets into one of four priority-based queues
CQ	provides guaranteed bandwidth to a specified class of traffic
FIFO	provides minimum guaranteed bandwidth to one or more flows
PQ	services a specified number of bytes in one queue before continuing to the next queue
WFQ	uses store-and-forward queueing

Correct Answer:



QUESTION 31

Which 802.11 frame type is association response?

- A. management
- B. protected frame
- C. control
- D. action

Correct Answer: A

Explanation:

https://en.wikipedia.org/wiki/802.11_Frame_Types

QUESTION 32

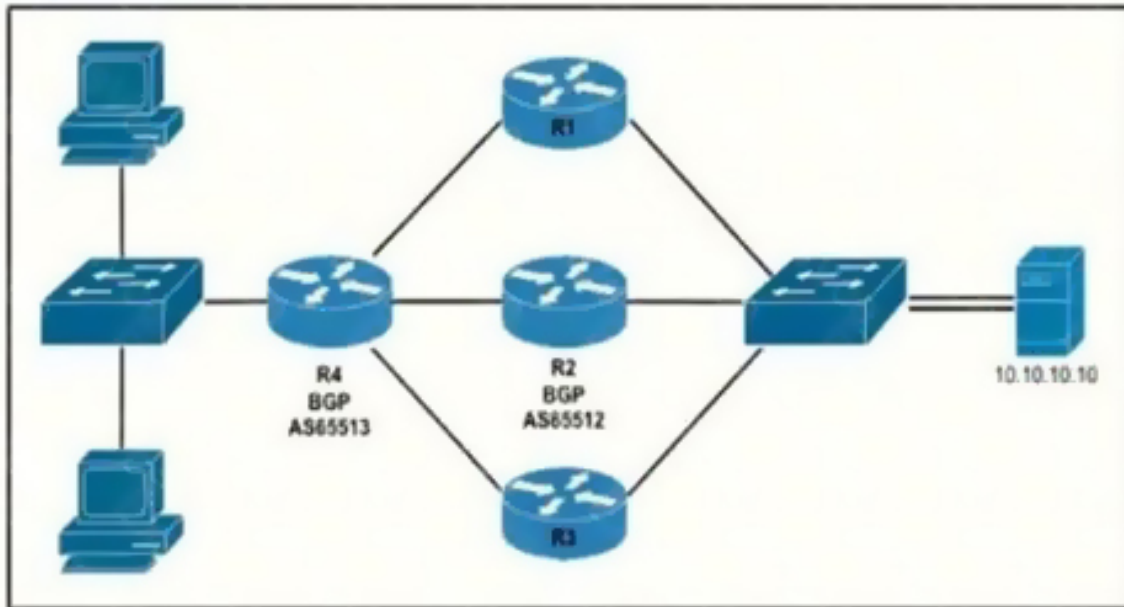
Why was the RFC 1918 address space defined?

- A. conserve public IPv4 addressing
- B. preserve public IPv6 address space
- C. reduce instances of overlapping IP addresses
- D. support the NAT protocol

Correct Answer: A

QUESTION 33

Refer to the exhibit. Router R4 is dynamically learning the path to the server. If R4 is connected to R1 via OSPF Area 20, to R2 via R2 BGP, and to R3 via EIGRP 777, which path is installed in the routing table of R4?



- A. the path through R1, because the OSPF administrative distance is 110
- B. the path through R2, because the IBGP administrative distance is 200
- C. the path through R2 because the EBGP administrative distance is 20
- D. the path through R3, because the EIGRP administrative distance is lower than OSPF and BGP

Correct Answer: C

QUESTION 34

Refer to exhibit. Which statement explains the configuration error message that is received?

```
Router(config)#interface GigabitEthernet 1/0/1
Router(config-if)#ip address 192.168.16.143 255.255.255.240
Bad mask /28 for address 192.168.16.143
```

- A. It is a broadcast IP address
- B. The router does not support /28 mask.
- C. It belongs to a private IP address range.
- D. IT is a network IP address.

Correct Answer: A

QUESTION 35

Which command prevents passwords from being stored in the configuration as plain text on a router or switch?

- A. enable secret
- B. service password-encryption
- C. username Cisco password encrypt
- D. enable password

Correct Answer: B

QUESTION 36

What criteria is used first during the root port selection process?

- A. local port ID
- B. lowest path cost to the root bridge
- C. lowest neighbor's bridge ID
- D. lowest neighbor's port ID

Correct Answer: B

QUESTION 37

Which function is performed by the collapsed core layer in a two-tier architecture?

- A. enforcing routing policies
- B. marking interesting traffic for data policies
- C. attaching users to the edge of the network
- D. applying security policies

Correct Answer: A

QUESTION 38

Which switch technology establishes a network connection immediately when it is plugged in?

- A. PortFast
- B. BPDU guard
- C. UplinkFast
- D. BackboneFast

Correct Answer: A

Explanation:

PortFast is useful to connect hosts and switches to a switch. Access layer switches are more frequently "plugged in" and "plugged out" than distribution or core layer switches. Also, this feature's target is just to minimize STP convergence time.

QUESTION 39

Refer to the exhibit. If OSPF is running on this network, how does Router2 handle traffic from Site B to 10.10.13.128/25 at Site A?