

QUESTION 1

In QoS, which prioritization method is appropriate for interactive voice and video?

- A. expedited forwarding
- B. traffic policing
- C. round-robin scheduling
- D. low-latency queuing

Correct Answer: D

QUESTION 2

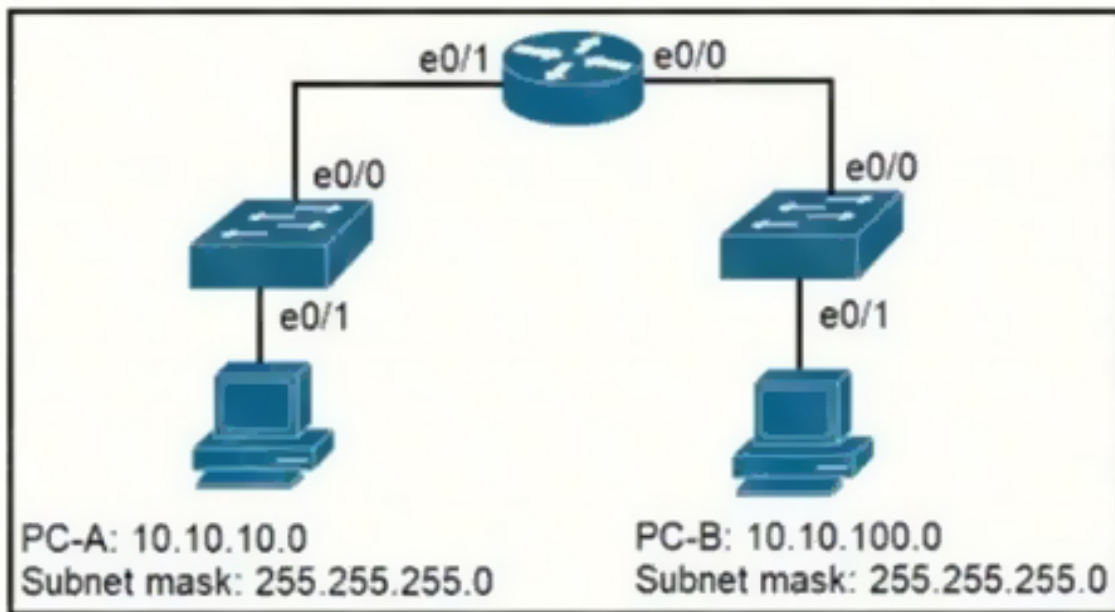
How are the switches in a spine-and-leaf topology interconnected?

- A. Each leaf switch is connected to one of the spine switches.
- B. Each leaf switch is connected to two spine switches, making a loop.
- C. Each leaf switch is connected to each spine switch.
- D. Each leaf switch is connected to a central leaf switch, then uplinked to a core spine switch.

Correct Answer: B

QUESTION 3

Refer to the exhibit. When PC-A sends traffic to PC-B, which network component is in charge of receiving the packet from PC-A verifying the IP addresses, and forwarding the packet to PC-B?



- A. Layer 2 switch
- B. Router
- C. Load balancer
- D. firewall

Correct Answer: B

Explanation:

PC--A and PC-B are not in the same network. Switches send traffic in layer 2 and within the same VLA while routers route traffic to different subnet and at layer 3.

QUESTION 4

Which implementation provides the strongest encryption combination for the wireless environment?

- A. WPA2 + AES
- B. WPA + AES
- C. WEP
- D. WPA + TKIP

Correct Answer: A

QUESTION 5

On workstations running Microsoft Windows, which protocol provides the default gateway for the device?

- A. DHCP
- B. STP
- C. SNMP
- D. DNS

Correct Answer: A

QUESTION 6

What is the default behavior of a Layer 2 switch when a frame with an unknown destination MAC address is received?

- A. The Layer 2 switch drops the received frame.
- B. The Layer 2 switch floods packets to all ports except the receiving port in the given VLAN.
- C. The Layer 2 switch sends a copy of a packet to CPU for destination MAC address learning.
- D. The Layer 2 switch forwards the packet and adds the destination MAC address to its MAC address table.

Correct Answer: B

Explanation:

If the destination MAC address is not in the CAM table (unknown destination MAC address), the switch sends the frame out all other ports that are in the same VLAN as the received frame. This is called flooding. It does not flood the frame out the same port on which the frame was received.

QUESTION 7

DRAG DROP

Drag and drop the attack-mitigation techniques from the left onto the Types of attack that they mitigate on the right.

configure 802.1x authentication	802.1q double-tagging VLAN-hopping attack
configure DHCP snooping	MAC flooding attack
configure the native VLAN with a nondefault VLAN ID	man-in-the-middle spoofing attack
disable DTP	switch-spoofing VLAN-hopping attack

Correct Answer:

configure 802.1x authentication	configure the native VLAN with a nondefault VLAN ID
configure DHCP snooping	configure 802.1x authentication
configure the native VLAN with a nondefault VLAN ID	configure DHCP snooping
disable DTP	disable DTP

QUESTION 8

DRAG DROP

A network engineer is configuring an OSPFv2 neighbor adjacency. Drag and drop the parameters from the left onto their required categories on the right. Not all parameters are used.

netmask	must be unique
OSPF process ID	
router ID	must match
IP address	
area ID	
timers	

Correct Answer:



QUESTION 9

An engineer must configure the IPv6 address 2001:0db8:0000:0000:0700:0003:400F:572B on the serial0/0 interface of the HQ router and wants to compress it for easier configuration. Which command must be issued on the router interface?

- A. ipv6 address 2001:db8::700:3:400F:572B
- B. ipv6 address 2001:db8:0::700:3:4F:572B
- C. ipv6 address 2001:Odb8::7:3:4F:572B
- D. ipv6 address 2001::db8:0000::700:3:400F:572B

Correct Answer: A

QUESTION 10

Refer to the exhibit. A router reserved these five routes from different routing information sources. Which two routes does the router install in its routing table? (Choose two)

```
IBGP route 10.0.0.0/30
RIP route 10.0.0.0/30
OSPF route 10.0.0.0/16
OSPF route 10.0.0.0/30
EIGRP route 10.0.0.1/32
```

- A. RIP route 10.0.0.0/30
- B. iBGP route 10.0.0.0/30
- C. OSPF route 10.0.0.0/30
- D. EIGRP route 10.0.0.1/32
- E. OSPF route 10.0.0.0/16

Correct Answer: CD

QUESTION 11

[Download Full Version 200-301 Exam Dumps \(Updated in Feb/2023\)](#)

When configuring a WLAN with WPA2 PSK in the Cisco Wireless LAN Controller GUI, which two formats are available to select? (Choose two)

- A. ASCII
- B. base64
- C. binary
- D. decimal
- E. hexadecimal

Correct Answer: AE

Explanation:

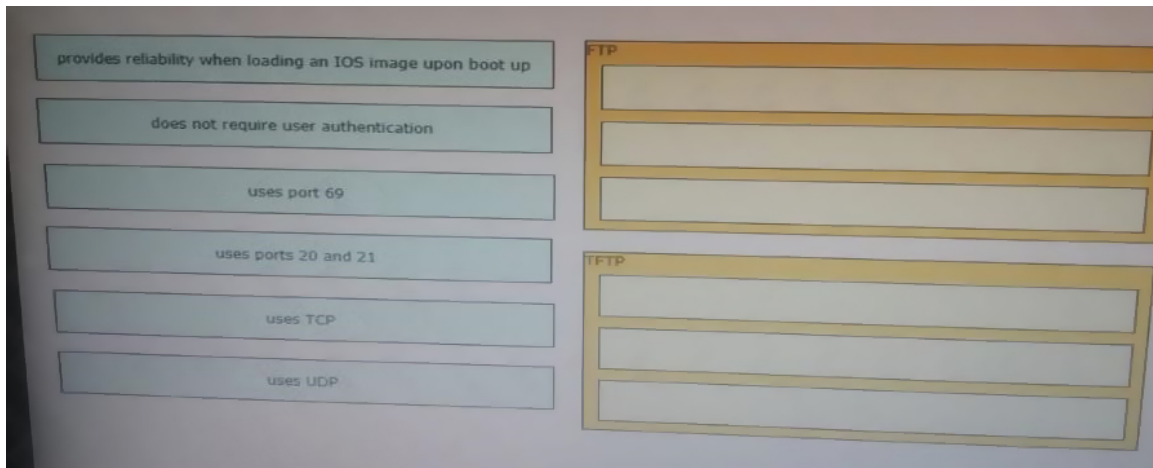
[https://www.cisco.com/c/en/us/td/docs/wireless/controller/7-](https://www.cisco.com/c/en/us/td/docs/wireless/controller/7-4/configuration/guides/consolidated/b_cg74_CONSOLIDATED/b_cg74_CONSOLIDATED_chapter_01010001.html)

[4/configuration/guides/consolidated/b_cg74_CONSOLIDATED/b_cg74_CONSOLIDATED_chapter_01010001.html](https://www.cisco.com/c/en/us/td/docs/wireless/controller/7-4/configuration/guides/consolidated/b_cg74_CONSOLIDATED/b_cg74_CONSOLIDATED_chapter_01010001.html)

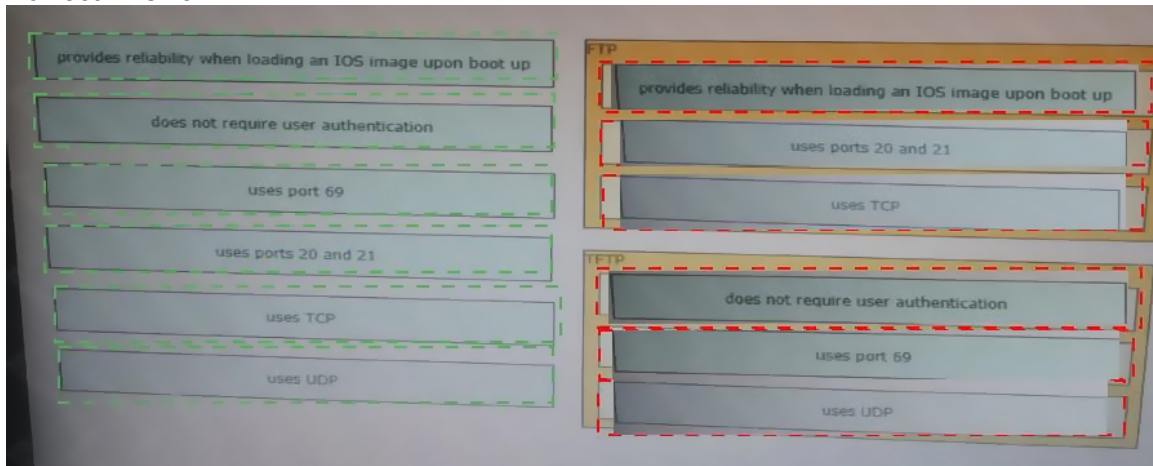
QUESTION 12

DRAG DROP

Drag and drop the descriptions of file-transfer protocols from the left onto the correct protocols on the right.



Correct Answer:



QUESTION 13

Which two functions are performed by the core layer in a three-tier architecture? (Choose two)

[200-301 Exam Dumps](#) [200-301 PDF Dumps](#) [200-301 VCE Dumps](#) [200-301 Q&As](#)
<https://www.ensurepass.com/200-301.html>