



VMware

Exam VCP550D

**VMware Certified Professional 5 - Data Center Virtualization Delta
Exam**

Version: 6.1

[Total Questions: 270]

Question No : 1

An administrator is planning a vSphere infrastructure with the following specific networking requirements:

- The ability to shape inbound (RX) traffic
- Support for Private VLANs (PVLANS)
- Support for LLDP (Link Layer Discovery Protocol)

What is the minimum vSphere Edition that will support these requirements?

- A. vSphere Essentials Plus
- B. vSphere Standard
- C. vSphere Enterprise
- D. vSphere Enterprise Plus

Answer: D

Question No : 2

What two IT infrastructure components are virtualized by vSphere Essentials? (Choose two.)

- A. Networks
- B. Applications
- C. Storage
- D. Management

Answer: A,C

Question No : 3

An administrator attempts to install vCenter Single Sign-On Server. The installer returns an error message indicating that the installation failed. Prior to the installation, all setup prerequisites were met. The administrator has generated a vCenter Server Single Sign-On support bundle.

Which two files should the administrator analyze to determine the cause of the failure?

(Choose two.)

- A. Server\utils\logs\imsTrace.log
- B. Server\utils\logs\install.txt
- C. %TEMP%\utils\logs\vminst.log
- D. %TEMP%\vminst.log

Answer: A,D

Question No : 4

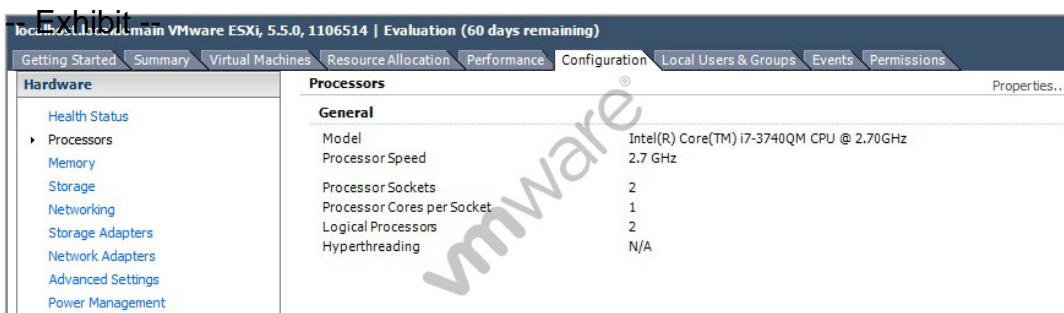
Which Single Sign-On deployment mode should an administrator use for two 5.x vCenter Servers configured with linked mode?

- A. Basic Single Sign-On with vCenter Server Heartbeat
- B. Multisite Single Sign-On
- C. Basic Single Sign-On
- D. Single Sign-On with Linked Mode

Answer: B

Question No : 5

-- Exhibit --



The screenshot shows the VMware vSphere Client interface. The top navigation bar includes tabs for Getting Started, Summary, Virtual Machines, Resource Allocation, Performance, Configuration, Local Users & Groups, Events, and Permissions. The left sidebar shows the Hardware section expanded, with sub-items for Health Status, Processors, Memory, Storage, Networking, Storage Adapters, Network Adapters, Advanced Settings, and Power Management. The main pane displays the Configuration tab for Processors, showing the following properties:

Processors	
General	
Model	Intel(R) Core(TM) i7-3740QM CPU @ 2.70GHz
Processor Speed	2.7 GHz
Processor Sockets	2
Processor Cores per Socket	1
Logical Processors	2
Hyperthreading	N/A

-- Exhibit --

Which two statements below could explain why the vSphere Client is reporting N/A for hyperthreading? (Choose two.)

The physical CPUs in the host do not support hyperthreading.

- A. Hyperthreading is disabled in the host's BIOS.
- B. The physical CPUs in the host are not multi-core.
- C. The number of CPUs meets or exceeds the maximum without hyperthreading.

Answer: A,B

Question No : 6

Immediately after installing an ESXi host, an administrator needs to examine the following log files:

- /var/log/hostd.log
- /var/log/vmkernel.log
- /var/log/vpxa.log

Which two connections would allow an administrator to examine these files? (Choose two.)

- A. Connecting to the Direct Console User Interface
- B. Attaching a vSphere Client directly to the ESXi host
- C. Attaching the vSphere Web Client directly to the ESXi host
- D. Attaching the vSphere Client to the vCenter Server managing the ESXi host

Answer: A,B

Question No : 7

An administrator is upgrading a vSphere Distributed Switch. The existing switch is version 5.0 and the administrator wants to upgrade to the latest version possible. The environment contains several ESXi 5.1 hosts.

Which two options are available to ensure that the upgraded switch will be compatible with these hosts? (Choose two.)

- A. Upgrade the vSphere Distributed Switch to 5.5
- B. Upgrade the ESXi 5.1 hosts to version 5.5, then upgrade the vSphere Distributed Switch to 5.5
- C. Upgrade the vSphere Distributed Switch to 5.1
- D. Upgrade the ESXi host switches to 5.5, then upgrade the vSphere Distributed Switch to 5.5

Answer: B,C

Question No : 8

To avoid unnecessary planned downtime, what is the minimum version of VMware Tools that, if installed, will decrease the need for virtual machine reboots following VMware Tools upgrades?

- A. 5.5
- B. 5.1
- C. 5.0
- D. 4.1

Answer: B

Question No : 9

Which two Identity Sources are available to add for vCenter Single Sign-On authentication? (Choose two.)

- A. LocalOS
- B. OpenLDAP
- C. NIS as an LDAP Server
- D. VCMSDS

Answer: A,B

Question No : 10

Which VLAN configuration requires switch connectivity defined as an access port?

- A. Private VLAN
- B. External Switch Tagging
- C. Virtual Guest Tagging
- D. Virtual Switch Tagging

Answer: B

Question No : 11

An administrator needs to deploy several virtual machines. Storage contention between the virtual machines should be managed by the VMkernel. Some of the virtual machines will use MSCS and should be highly available across the ESXi 5.5 hosts.

Which two storage options meet these requirements? (Choose two.)

- A. iSCSI
- B. NFS
- C. Fibre Channel
- D. vSAN

Answer: A,C

Question No : 12

Which two precautions should a vSphere administrator take before increasing the size of a VMFS datastore? (Choose two.)

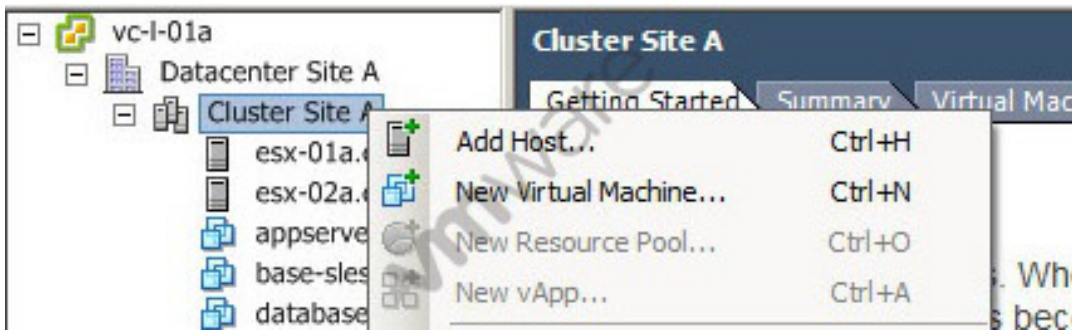
- A. Unmount the datastore
- B. Perform a rescan to ensure that all hosts see the most current storage
- C. Quiesce I/O on all disks involved
- D. Shut down all virtual machines stored in the datastore

Answer: B,C

Question No : 13

-- Exhibit --

Dumps with PDF and VCE (+Free VCE Software)



-- Exhibit --

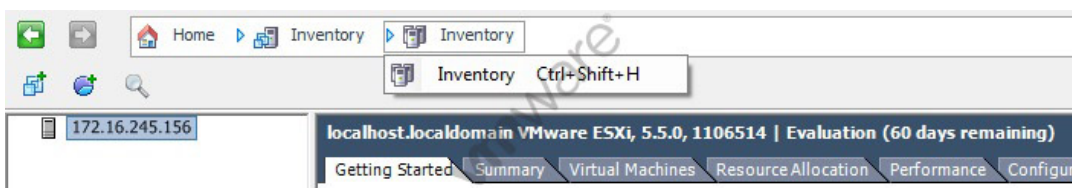
What action should the vSphere administrator take to allow for a new vApp to be created in the cluster?

- A. Enable Distributed Resource Scheduling on the cluster
- B. Create a Resource Pool in the cluster, and create the vApp in the Resource Pool
- C. Enable High Availability on the cluster
- D. Create a new Datacenter, and create the vApp in the new Datacenter

Answer: A

Question No : 14

-- Exhibit --



-- Exhibit --

A vSphere administrator receives a report of an issue with a vApp. After connecting to the environment with the vSphere Client, the administrator does not see the vApp, but instead sees the inventory shown in the exhibit.

What explains this behavior?

- A. The administrator is connected to the ESXi host running the vApp.
- B. The administrator is using the Web Client.
- C. The vApp is in a partially deleted state.

D. The vApp has been converted to a resource pool.

Answer: A

Question No : 15

A system administrator is unable to clone a windows 2008 server while connected directly to an ESXi host through vSphere Client.

Which two methods can be used to complete the task? (Choose two.)

- A. Connect to vCenter Server and retry the operation.
- B. Use VMware Converter to perform the operation.
- C. Connect to the host using the Web Client and retry the operation.
- D. Use VMware Configuration Manager to perform the operation.

Answer: A,B

Question No : 16

An administrator needs to create and provision new virtual machines from a master image that can not be edited or powered on.

Which type of resource is most appropriate for the administrator to perform the task?

- A. Full Clone
- B. Linked Clone
- C. Template
- D. Snapshot

Answer: C

Question No : 17

A vSphere administrator is unable to vMotion a virtual machine between two hosts. An error message indicates that the USB device is not accessible on the target host.

What is causing this issue?

- A. The USB device was not enabled for vMotion when it was added to the virtual machine.
- B. ESXi does not support vMotion with a USB device attached to the virtual machine.
- C. The VMkernel port for vMotion is not enabled for USB traffic.
- D. The virtual machine has the wrong USB controller installed.

Answer: A

Question No : 18

A vSphere administrator needs to configure a virtual machine to meet a guaranteed CPU performance profile.

Which configuration setting could the administrator choose?

- A. Set the CPU Limit to High
- B. Set the CPU Shares to 500MHz
- C. Set the CPU Guarantee to High
- D. Set the CPU Reservation to 500MHz

Answer: D

Question No : 19

An organization's datastores are configured in a fully automated Storage Distributed Resource Scheduler (SDRS) cluster. The vSphere administrator determines that virtual machines are being migrated between datastores even though the datastores look evenly balanced. On further investigation, the administrator determines that the datastore's utilization percentages differ by 2%.

Which Storage DRS setting should the administrator change to prevent the virtual machines from migrating prematurely?

- A. Edit the Storage DRS cluster settings to increase the percentage of the Space Utilization Difference threshold
- B. Edit the Storage DRS cluster settings to increase the percentage of the I/O imbalance threshold
- C. Edit the Storage DRS cluster settings to increase the size of the Space Utilization

Difference threshold

D. Edit the Storage DRS cluster settings to increase the size of the I/O imbalance threshold

Answer: A

Question No : 20

A vSphere administrator enables Fault Tolerance on a powered off virtual machine that has the following configuration:

- The virtual machine's single thin provisioned virtual disk is sized at 100GB.
- The datastore that houses the virtual machine has 120GB of free space.

After Fault Tolerance has been configured, another administrator attempts to use Enhanced vMotion to move a 30GB virtual machine file into the same datastore and receives an error.

What condition could cause this behavior?

- A. Fault Tolerance inflated the virtual machine's virtual disk file.
- B. Fault Tolerance created a temporary logging file on the same datastore.
- C. Fault Tolerance created a secondary copy of the virtual machine's virtual disk file.
- D. The Fault Tolerance logging file ran out of disk space.

Answer: A

Question No : 21

While testing a Fault Tolerance setup on a virtual machine, a system administrator notices that the DRS automation level of the virtual machine has been automatically set to Disabled.

The administrator needs to enable DRS to migrate the Fault Tolerance virtual machine to balance the cluster's CPU and memory loads.

What should the administrator do?

- A. Enable Enhanced vMotion Compatibility (EVC) in the vSphere cluster.
- B. Move the virtual machine to a VMFS 5 datastore built on shared storage.
- C. Manually change the DRS automation level of the virtual machine to Enabled.

D. Move the secondary virtual machine to a host with a Fault Tolerance VMkernel port.

Answer: A

Question No : 22

-- Exhibit --

Host 1:



Host 2:



-- Exhibit --

A vSphere administrator has misconfigured vMotion in such a way that vMotion migrations are failing.

Based on the information shown, what is the cause of the problem?

- A. The vMotion VMkernel ports on the hosts are configured with the same IP address.
- B. The labels of the vMotion VMkernel ports are not identical.
- C. The vMotion VMkernel ports are not labeled identically.
- D. The vMotion VMkernel ports are using the same uplink.

Answer: A

Question No : 23

A system administrator detects that a VDP Appliance that has been operational for 6 months has become inconsistent or unstable.

Which action should the administrator take to recover the VDP appliance and what will be the impact on the vSphere environment?

- A. Perform a VDP rollback to the most recent validated checkpoint. All backup and configuration changes made after the checkpoint will be lost.
- B. Perform a VDP rollback to the most recent validated checkpoint. Configuration changes after the checkpoint will be lost, but backup data will remain intact.
- C. Restore a copy of the latest backup of the VDP appliance. All backup data and configuration changes after the backup was made will be lost.
- D. Restore a copy of the latest backup of the VDP appliance. All configuration changes after the backup was made will be lost, but backup data will remain intact.

Answer: A

Question No : 24

Which two features are different between VDP and VDPA? (Choose two.)

- A. Support for guest level backups of SQL and Exchange
- B. Ability to perform file level recovery
- C. Virtual machines supported per appliance
- D. Support for image level backups

Answer: A,C

Question No : 25

An administrator must determine which Update Manager procedures can be performed using the vSphere Web Client, and which must be completed using the Windows vSphere client.

Which two tasks require the use of the Windows vSphere client? (Choose two.)

- A. Attach and detach baselines to inventory objects
- B. Scan inventory objects for compliance
- C. Create a baseline for an inventory object
- D. Stage a baseline for remediation

Answer: C,D

Question No : 26

A vSphere administrator needs to use vSphere Update Manager to perform orchestrated upgrades of virtual machines.

Which two options are available for virtual machine remediation? (Choose two.)

- A. Upgrade virtual machine hardware
- B. Upgrade VMware tools
- C. Upgrade virtual machine appliances
- D. Upgrade virtual machine guest OS

Answer: A,B

Question No : 27

Which two are supported object types for Update Manager? (Choose two.)

- A. virtual appliances
- B. templates
- C. vApps
- D. hosts

Answer: A,D

Question No : 28

A vSphere administrator needs a way of sending noncritical ESXi events to a remote server. Due to budget constraints, no additional costs should be incurred.

Which tool will best meet this requirement?

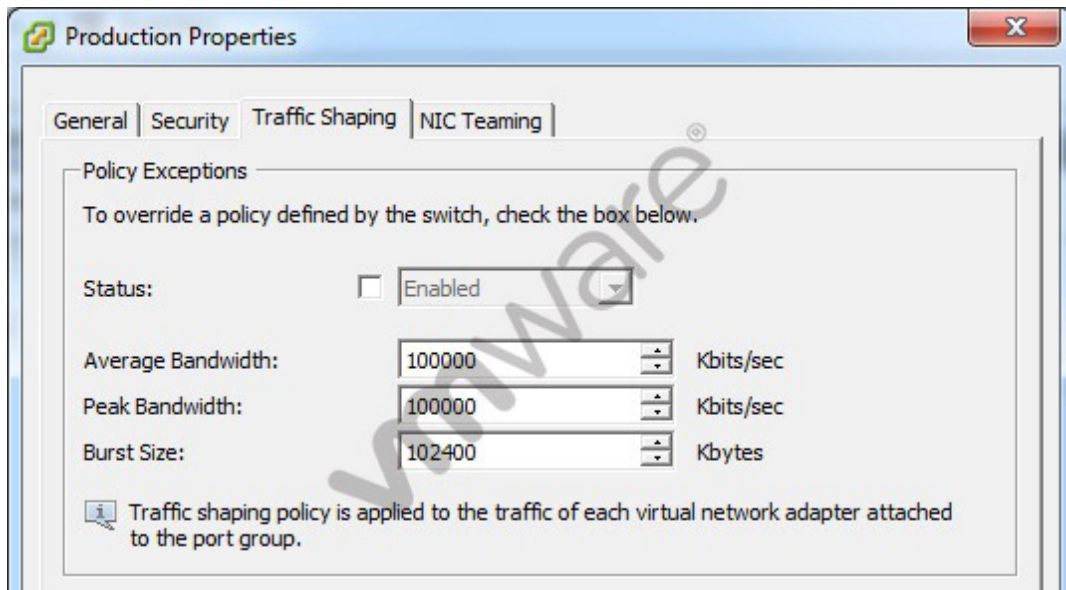
- A. vSphere Syslog Collector
- B. vSphere ESXi Dump Collector
- C. vSphere vCenter Log Insight

D. vSphere Management Appliance

Answer: A

Question No : 29

-- Exhibit --



-- Exhibit --

An administrator determines that traffic shaping does not appear to be working on Production, a virtual machine port group on vSwitch1. Traffic shaping is working on all other port groups on the switch.

The administrator examines the Traffic Shaping settings as shown in the exhibit:

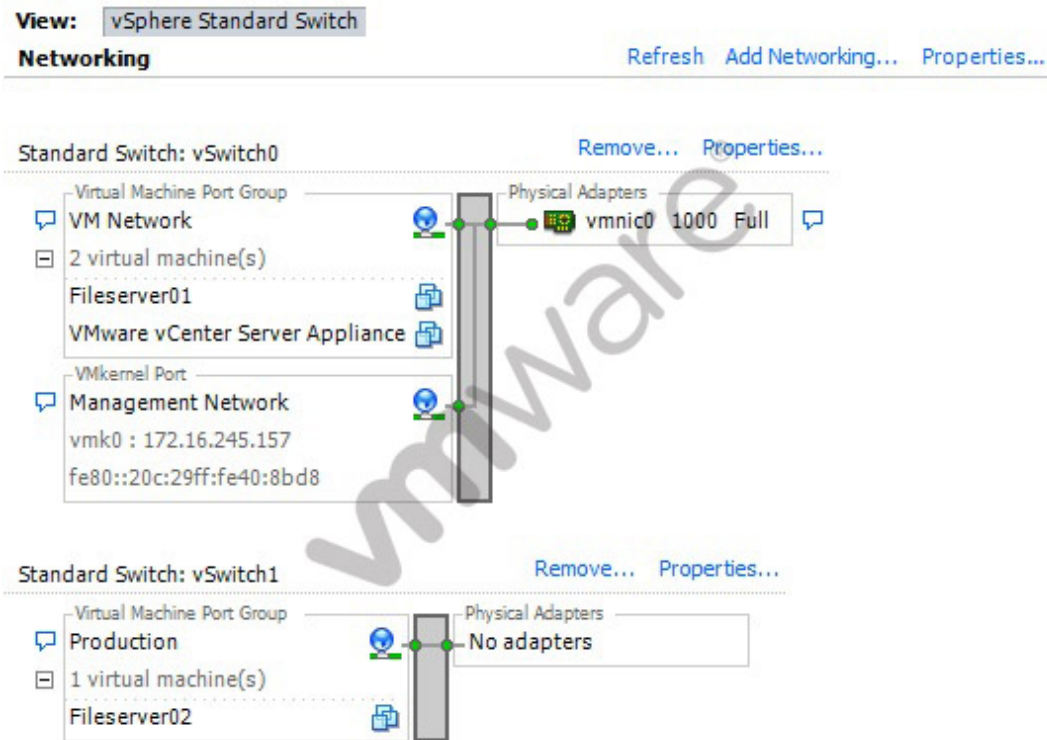
What should the administrator do to resolve the problem?

- A. Select the Status checkbox to enable Traffic Shaping on the portgroup.
- B. Reduce the Average Bandwidth to 50% of the Peak Bandwidth.
- C. Reduce the Burst Size to 50% of the Peak Bandwidth.
- D. Click the Security tab and create the necessary security exception.

Answer: A

Question No : 30

-- Exhibit --



-- Exhibit --

The vSphere administrator needs to remove the Production virtual machine port group from an ESXi host. The ESXi host's Networking Configuration tab is shown in the exhibit.

After disconnecting the Fileserver02 VM, what step does the administrator need to take, assuming that vSwitch1 will still be needed for further configuration?

- A. Remove the Production port group by accessing the properties for the port group.
- B. Remove the Production port group by accessing the properties for vSwitch1.
- C. Remove the Production port group by accessing the properties for the Network.
- D. Remove the Production port group by removing vSwitch1.

Answer: B

Question No : 31

An administrator determines that when a host residing in a High Availability (HA) cluster fails, the virtual machines fail to restart on a remaining host, or will only restart after a long delay.

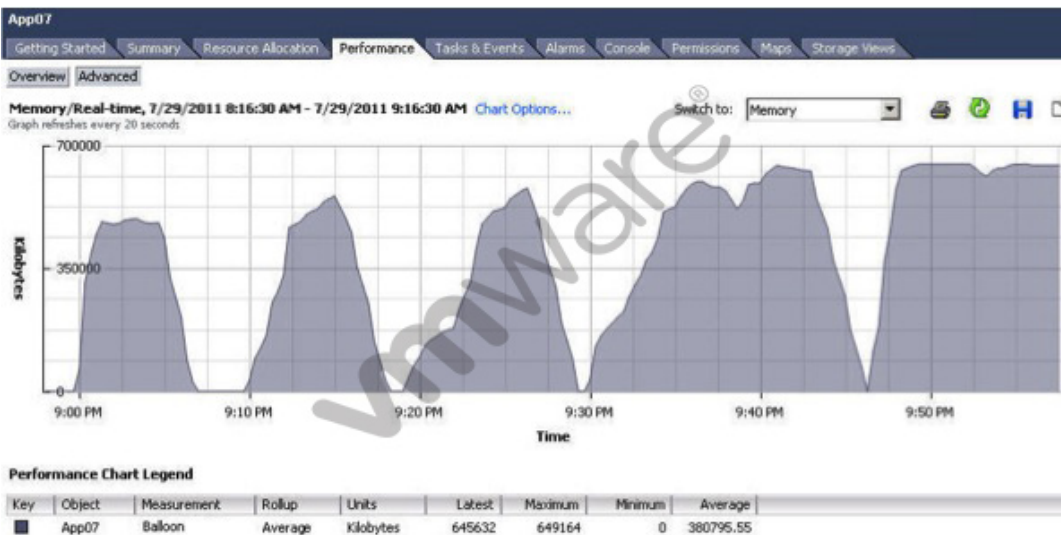
Which two conditions would account for this behavior? (Choose two.)

- A. The virtual machines were not protected by vSphere HA at the time the failure occurred.
- B. Distributed Resource Scheduler was not enabled at the time the failure occurred.
- C. There is insufficient spare capacity on hosts with which the virtual machines are compatible.
- D. The virtual machines contain physical Raw Device Mappings.

Answer: A,C

Question No : 32

-- Exhibit --



-- Exhibit --

What is portrayed in the performance chart?

- A. The ESXi host running the VM has Transparent Page Sharing enabled.
- B. The virtual machine's memory share value is set too high.
- C. The virtual machine is memory constrained.
- D. The ESXi host running the VM is low on memory.

Answer: D

Question No : 33

A vSphere administrator can create an alarm on which two objects? (Choose two.)

- A. LUN
- B. Datastore
- C. Template
- D. Folder

Answer: B,D

Question No : 34

An administrator needs to modify a virtual machine alert to increase the threshold value of the trigger. Once connected to the vCenter Server, the administrator navigates to the virtual machine to make the change. However, the administrator is unable to edit the alarm.

What is the reason that this alarm cannot be edited?

- A. The alarm was not defined on this inventory object.
- B. The administrator is not the owner of this inventory object.
- C. The alarm was not created by the administrator.
- D. The alarm has not been acknowledged.

Answer: A

Question No : 35

An administrator using vCenter Operations Manager is viewing the health of an ESXi host in the environment. There have NOT been any reported outages or issues with the ESXi host, but the administrator needs to determine if the host is behaving normally.

Which minor badge should the administrator investigate to determine this information?

- A. Faults
- B. Anomalies
- C. Stress
- D. Health

Answer: B

Question No : 36

Which minor badge scores are used to calculate the Health score in vCenter Operations Manager?

- A. Time remaining, Capacity remaining, Stress
- B. Workload, Anomalies, Faults
- C. Stress, Faults, Risk
- D. Reclaimable Waste, Density

Answer: B

Question No : 37

A small company wants to use VMware products for its production systems. The system administrator needs to recommend a solution that will deliver High Availability to the company's production applications.

What is minimum vSphere offering that will support this requirement?

- A. vSphere Essentials
- B. vSphere Essentials Plus
- C. vSphere Hypervisor
- D. vSphere Standard

Answer: B

Question No : 38

A developer needs to create a multi-tier development stack for a home lab.

Which vSphere product will support the architecture required for the least software cost?

- A. vSphere Hypervisor
- B. vSphere Essentials
- C. VMware Player
- D. VMware Workstation

Answer: A

Question No : 39

An administrator is unable to login to vCenter Server when using the vSphere web client. The administrator successfully accessed vCenter Server using the client earlier the same day.

What is the most appropriate first step the administrator should take to resolve this issue?

- A. Verify the web browser being used has Adobe Flash plugin version 11.5 or later
- B. Verify the vCenter Single Sign-On service is running on the vCenter Server
- C. Verify the vSphere Web Server service is running on the vCenter Server
- D. Verify the administrator has permissions configured in vCenter Server

Answer: B

Question No : 40

What is a valid plug-in status for a plug-in that has been added to a vSphere client?

- A. Disabled
- B. Unknown
- C. Stopped
- D. Installed

Answer: A

Question No : 41

An administrator is evaluating whether to deploy vCenter Server on a Windows server or on a vCenter Server appliance. The administrator has the following requirements:

- A web browser will be utilized to manage the vSphere environment.
- 16 ESXi hosts will be deployed.
- Licenses must be shared with a vCenter Server at another site.

Dumps with PDF and VCE (+Free VCE Software)

- An external Oracle 10g database server will be used to host the vCenter Server database.

Why will the administrator need to deploy vCenter Server on a Windows server?

- A. Linked Mode is a requirement for the solution.
- B. Oracle 10g is a requirement for the solution.
- C. The vSphere web client is a requirement for the solution.
- D. Management of more than 5 hosts is a requirement for the solution.

Answer: A

Question No : 42

Immediately after installing ESXi, an administrator observes that the Configure Lockdown Mode option is grayed out in the Direct Console User Interface (DCUI).

What is the most likely explanation?

- A. The host has not yet been added to a vCenter Server.
- B. The BIOS on the host does not have NX/XD enabled.
- C. The ESXi host is running in evaluation mode.
- D. The host requires a reboot before this feature is available.

Answer: A

Question No : 43

An administrator is installing ESXi on several hosts attached to iSCSI storage.

Why would the administrator detach the host from the IP storage network prior to installation?

- A. It decreases the time the installer needs to search for available disk drives.
- B. It allows the installation of a generic VAAI component for IP storage.
- C. It prevents ESXi from installing vSphere Flash Cache to the IP storage.
- D. It is required when installing ESXi onto a physical server that utilizes IP storage.

Answer: A

Question No : 44

During the installation of ESXi 5.5, the following error message is reported:

Hardware Virtualization is not a feature of the CPU, or is not enabled in the BIOS.

Which condition would generate this message?

- A. LAHF/SAHF is not enabled in the BIOS.
- B. NX/XD is not enabled in the BIOS.
- C. SSE3 is not enabled in the BIOS.
- D. Hyperthreading is not enabled in the BIOS.

Answer: A

Question No : 45

What is the minimum virtual machine compatibility setting required for a virtual machine to run on a vSphere 5.5 host?

- A. ESXi 5.1 and later
- B. ESXi 3.0 and later
- C. ESXi 4.1 and later
- D. ESXi 3.5 and later

Answer: D

Question No : 46

Which is the simplest baseline group combination an administrator could create to upgrade hosts, VMware tools, and virtual machine hardware to the latest versions using Update Manager?

- A. One baseline group that contains the host upgrade baselines and one baseline group that contains the VM Hardware and VMware Tools upgrade baselines

- B. One baseline group that contains the host upgrade and vCenter upgrade baselines
- C. One baseline group that contains the host, VMware tools, and VM Hardware upgrade baselines
- D. One baseline group that contains the Data Center upgrade baseline and one baseline group that contains the VM upgrade baseline

Answer: A

Question No : 47

During an upgrade, the ESXi 5.x installer finds an existing version of ESXi and a VMFS3 volume. No virtual machines exist on the host or VMFS3 volume. The requirement is to upgrade to VMFS5.

Which option should be chosen to meet this requirement?

- A. Upgrade ESXi and preserve the VMFS datastore
- B. Install ESXi and preserve the VMFS datastore
- C. Install ESXi and overwrite the VMFS datastore
- D. Upgrade ESXi and overwrite the VMFS datastore

Answer: C

Question No : 48

What happens to the status of users already logged into ESXi Shell when a vSphere administrator enables lockdown mode?

- A. Users remain logged in and can run commands, except to disable lockdown mode.
- B. Users remain logged in and can run commands, including disabling lockdown mode.
- C. Users are immediately logged out of ESXi Shell.
- D. Users are logged out after a timeout specified by the vSphere administrator.

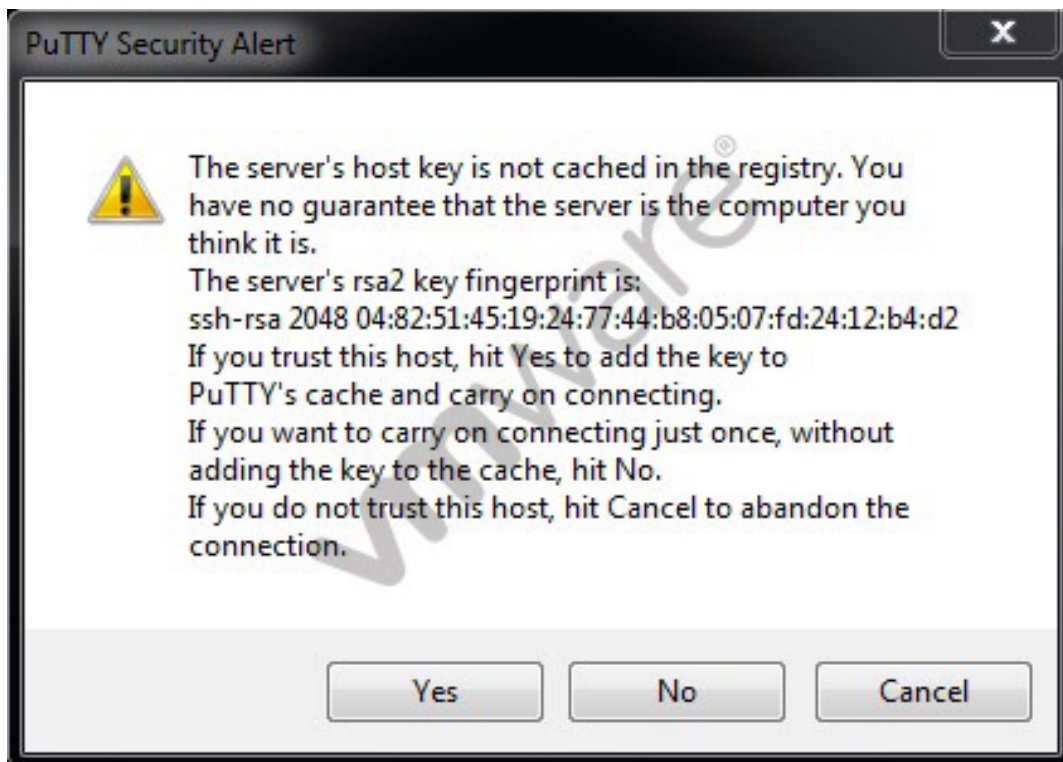
Answer: A

Question No : 49

The vSphere administrator attempts to connect to an ESXi host via an SSH client and

receives the following security alert:

-- Exhibit --



-- Exhibit --

The vSphere administrator needs to determine whether the RSA key fingerprint shown in the security alert is the fingerprint of the intended ESXi host.

Which tool should the vSphere administrator use?

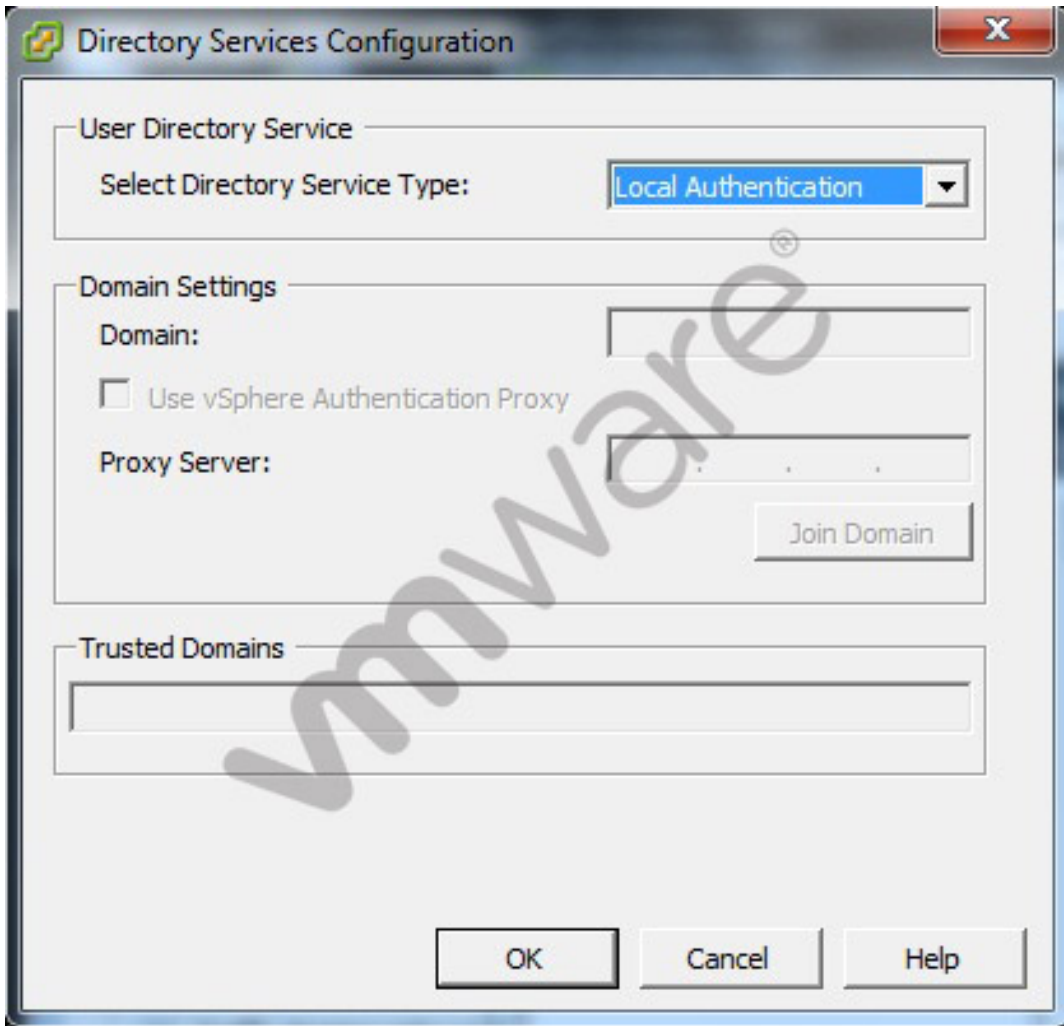
- A. Direct Console User Interface
- B. vSphere Client
- C. vSphere Web Client
- D. vSphere Management Assistant

Answer: A

Question No : 50

The vSphere administrator is configuring directory services for an ESXi host:

-- Exhibit --



-- Exhibit --

What should the vSphere administrator do to configure the host to use CAM services?

- A. Check the Use vSphere Authentication Proxy checkbox.
- B. Set Select Directory Service Type to CAM services.
- C. Specify CAM\$ for the Domain.
- D. Set Trusted Domains to cam\name.tld where name.tld is the domain that the host is joining.

Answer: A

Question No : 51

A vSphere Standard Switch is configured with two uplinks.

When adjusting the failover order of the uplinks, what are two valid states in which an administrator can place the uplinks? (Choose two.)

- A. Active
- B. Unused
- C. Passive
- D. Disabled

Answer: A,B

Question No : 52

An administrator determines that a vSphere Standard Switch is dropping all inbound frames to a specific virtual machine. The behavior appeared in the last two days. Which configuration setting, if changed during this timeframe, would result in this behavior?

- A. MAC address changes
- B. Forged Transmit
- C. Traffic Shaping
- D. Jumbo Frames

Answer: A

Question No : 53

Which two network settings are available on a vSphere Standard Switch? (Choose two.)

- A. Ingress traffic shaping
- B. Egress traffic shaping
- C. Private Virtual Local Area Networks (PVLAN)
- D. Virtual Local Area Networks (VLAN)

Answer: B,D

Question No : 54

A security team is validating policy settings in a vSphere environment.

By default, which security policy is set to reject on a vSphere Standard Switch?

- A. Promiscuous mode
- B. MAC address changes
- C. Forged transmit
- D. Use explicit failover

Answer: A

Question No : 55

A vSphere administrator upgrades a version 5.1.0 vSphere Distributed Switch to version 5.5.0. Another vSphere administrator, unaware of this change, tries to add an ESXi version 5.1.0 host to the switch and fails.

What is causing this addition of the ESXi host to fail?

- A. The upgraded switch supports version 5.5 ESXi hosts only.
- B. The upgraded switch must be set up for backwards compatibility.
- C. The switch failed to upgrade properly.
- D. A version 5.5 ESXi host must be added to the switch before the 5.1 host.

Answer: A

Question No : 56

A vSphere administrator creates a new vSphere Distributed Switch. The administrator receives notice from the service desk that a cluster of vSphere hosts has disconnected from vCenter Server. This disconnect occurred immediately after the new switch was created.

- This vSphere Distributed Switch is the only distributed switch managed by vCenter.
- The virtual machines are still functional and the applications are still accessible by end users.

On the ESXi hosts, which step must the vSphere administrator take to allow vCenter Server to reconnect?

- A. Use the Direct Console User Interface to reattach the management vmnic to the appropriate switch
- B. Use the Direct Console User Interface to disable lockdown mode on each affected host
- C. Use the ESXi Shell to restart the mgmt-vmware service on each affected host
- D. Use the ESXi Shell to restart the vSphere Web Client service on each affected host

Answer: A

Question No : 57

A vSphere administrator is administering a vSphere Distributed Switch port group using the vSphere Web Client. The port group was configured using Static binding, but the number of ports must increase as virtual machines are added to the port group.

Which port allocation setting should the administrator use to achieve this goal?

- A. Elastic
- B. Dynamic
- C. Fixed
- D. Manual

Answer: A

Question No : 58

An administrator is deploying vSphere 5.5. The administrator creates a vSphere Distributed Switch, then uses Auto Deploy to deploy several ESXi hosts. After the hosts are deployed, the administrator notices that LACP packets are not being sent between them.

Which condition would cause this issue to occur?

- A. The LACP support settings do not exist in the Host Profile.
- B. The LACP installation bundle is not included in the Image Profile.
- C. The LACP setting is not enabled on vCenter Server.
- D. LACP has not been configured on the Auto Deploy server.

Answer: A

Question No : 59

A virtual machine is receiving a large number of network packets, which is affecting the performance of other virtual machines connected to the same virtual network.

What should the vSphere administrator do to resolve the issue?

- A. Migrate the virtual machine to a standard switch that has been configured for ingress traffic shaping
- B. Configure the distributed switch to which the virtual machine is connected for ingress traffic shaping
- C. Migrate the virtual machine to a different port group on the same distributed switch
- D. Enable Network I/O Control on the standard switch to which the virtual machine is connected

Answer: B

Question No : 60

A virtual machine is unable to communicate with another virtual machine. Both virtual machines are connected to the Production port group on the same virtual switch and are running on the same host.

Which configuration is causing the inability of the virtual machines to communicate?

- A. LLDP was enabled instead of CDP for the vSphere Distributed Switch.
- B. Promiscuous Mode has been set to Allow on the Production port group.
- C. The Production port group is configured to use a secondary PVLAN.
- D. The speed and duplex settings for the virtual machine vmnics do not match.

Answer: C

Question No : 61

Which two statements are true regarding a new vSphere deployment that is using software FCoE boot from SAN? (Choose two.)

- A. Multi-pathing options must be configured by the vmkernel after boot.
- B. The adapter must support iBFT or UEFI.
- C. The adapter must support FBFT or FBPT.
- D. Multi-pathing options must be configured in the Boot ROM.

Answer: A,C

Question No : 62

Which feature requires an administrator to configure an RDM with Virtual Compatibility Mode?

- A. vMotion
- B. Virtual Machine Snapshots
- C. High Availability
- D. N-port ID Virtualization

Answer: B

Question No : 63

A virtual machine has the following configuration:

- Thin provisioned virtual disks
- The VMFS datastore on which it resides is on a thin provisioned LUN.
- The storage array is VAAI-enabled.

What is the behavior of the virtual machine when it encounters an out-of-space condition?

- A. It is suspended.
- B. It is gracefully shut down.
- C. It is powered off.
- D. It is converted to space-efficient sparse.

Answer: A

Question No : 64

What should an administrator do to configure multi-pathing using software iSCSI?

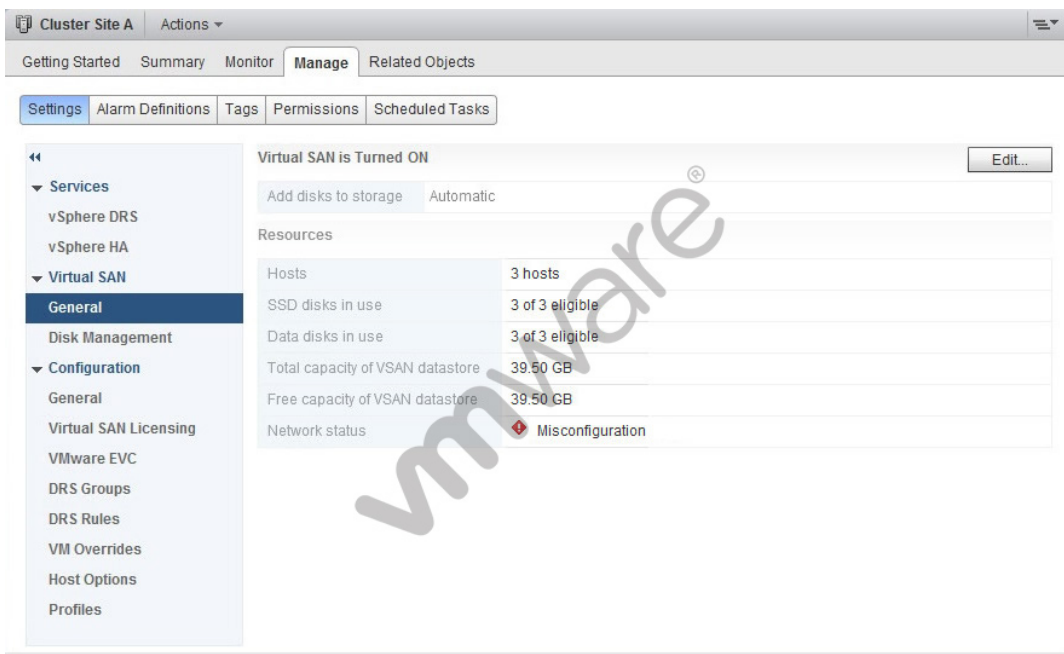
- A. Bind the VMkernel ports to the software iSCSI initiator
- B. Configure Zoning between the hosts and SAN switches
- C. Configure NIC teaming on the associated uplinks
- D. Ensure jumbo frames are enabled end-to-end

Answer: A

Question No : 65

A vSphere administrator observes a problem with the Virtual SAN Cluster Setting as shown:

-- Exhibit --



-- Exhibit --

Which action should the administrator take on the vmkernel portgroup on all hosts used by Virtual SAN cluster to resolve this problem?

- A. Select the Virtual SAN traffic option
- B. Increase the MTU value
- C. Change the DNS server address
- D. Increase the Port Speed

Answer: A

Question No : 66

Which statement is true about the hardware configuration for ESXi hosts participating in a virtual SAN?

- A. The hosts must have identical hardware.
- B. Each host must have at least one Solid State Drive (SSD).
- C. The hosts must have network attached storage.
- D. Each host must have a RAID Controller.

Answer: B

Question No : 67

An administrator has configured a vSphere 5.5 test environment to evaluate the Virtual SAN feature using Automatic Mode Disk Groups. The administrator needs to disable the Virtual SAN cluster while preserving the virtual machines running on that cluster.

The administrator has already installed a vSphere 5.5 Client on a Windows 7 desktop and also has access to the vSphere 5.5 Web Client.

What should the administrator do to disable the Virtual SAN?

- A. Use Storage vMotion to migrate the virtual machines to another datastore then use the vSphere 5.5 Client to disable the Virtual SAN.
- B. Use Storage vMotion to migrate the virtual machines to another datastore then use the vSphere 5.5 Web Client to disable the Virtual SAN.
- C. Use the vSphere 5.5 Client to disable the Virtual SAN, which will automatically migrate the virtual machines via the Storage DRS feature.
- D. Use the vSphere 5.5 Web Client to disable the Virtual SAN, which will automatically migrate the virtual machines via the Storage DRS feature.

Answer: B

Question No : 68

A vSphere administrator has created a Virtual SAN Cluster with Automatic Mode Disk

Groups. The cluster includes three ESXi hosts contributing one SSD and six SAS disks each. The administrator has four new ESXi hosts that boot from a fiber channel array and have no local disks attached. These four new hosts need additional shared storage but there is insufficient space on the fiber channel array. The hardware budget is limited.

What can the administrator do to provide the needed storage for the lowest cost?

- A. Add the four new hosts to the Virtual SAN Cluster and use the existing storage in the cluster.
- B. Add an SAS RAID controller to each of the new hosts. Attach one SSD and six SAS disks to each RAID controller and then add the four hosts to the Virtual SAN cluster.
- C. Add the four new hosts to the Virtual SAN Cluster and contribute the fiber channel disks to the Virtual SAN.
- D. Add the four new hosts to the Virtual SAN Cluster and change to Manual Mode Disk Groups.

Answer: A

Question No : 69

A customer needs a datastore to be seen across multiple vSphere clusters with applications inside of the virtual machines that must detect the physical characteristics of the storage device.

Which type of virtual disk meets this requirement?

- A. A virtual disk on a VMFS datastore
- B. A raw device mapped disk in virtual compatibility mode
- C. A raw device mapped disk in physical compatibility mode
- D. A virtual disk on an NFS datastore

Answer: C

Question No : 70

The current block size of a datastore in VMFS3 is 4MB. An administrator needs to upgrade the datastore to VMFS5 and wants to change it to 1MB block size.

Which action should the administrator take?

- A. Upgrade the datastore to VMFS 5. Select the 1MB block size option during the upgrade.
- B. Create a new VMFS5 datastore with a 1MB block size. Migrate all virtual machines from the existing datastore to the new datastore, then delete the VMFS3 datastore.
- C. Upgrade the datastore to VMFS5. Use vmkfstools to change the block size on the upgraded datastore.
- D. Create a new VMFS5 datastore with a 1MB block size. Migrate all virtual machines from the existing datastore to the new datastore. Upgrade the virtual machine hardware on the migrated VMs, then delete the VMFS3 datastore.

Answer: B

Question No : 71

An administrator needs to use guest OS clustering in a vSphere environment that uses a Fibre Channel SAN. The clustering software does NOT have a SCSI target or a SCSI command pass-through requirement.

Which VMware storage type should the administrator use?

- A. Physical RDM
- B. VMFS
- C. Virtual RDM
- D. NFS

Answer: B

Question No : 72

Which two CPU features enable the use of 64-bit virtual machines? (Choose two.)

- A. Intel VT
- B. NX/XD Bit
- C. Hyper-threading
- D. AMD RVI

Answer: A,D

Question No : 73

An administrator is creating a new VMFS volume and needs to make it available to all hosts within a datacenter using the Web Client.

What should the administrator scan for in order to meet this requirement?

- A. New Storage Devices and LUNs
- B. New Storage Devices and VMFS Volumes
- C. New VMFS Volumes and Datastores
- D. New VMFS Volumes and LUNs

Answer: B

Question No : 74

An administrator is deploying a virtual machine from a template.

Assuming all of the inventory objects below exist in the implementation, what is the highest level in the vCenter Server hierarchy to which a virtual machine can be deployed?

- A. Datacenter
- B. Cluster
- C. Resource Pool
- D. Host

Answer: B

Question No : 75

Which statement is accurate when choosing the storage controller for a virtual machine using the Create New Virtual Machine wizard in custom mode?

- A. There is a predetermined controller based on the guest OS, which cannot be changed.
- B. A controller is recommended based on the guest OS type. The administrator can choose this controller or select any other.
- C. There is a predetermined controller based on the guest OS, which can only be changed after the virtual machine is deployed.
- D. The controller options presented will be based on the guest OS type. The administrator must choose one of these options.

Answer: B

Question No : 76

A VMware administrator needs to simplify the placement of virtual machines. The administrator also needs to balance I/O load and space utilization automatically.

Which combination of features should the administrator use to achieve this?

- A. Create a Datastore Cluster and enable Storage DRS on the cluster
- B. Create a Datastore Cluster and enable Storage I/O Control on each datastore
- C. Enable Storage DRS and Storage I/O Control on each datastore
- D. Enable Storage I/O Control on each datastore and configure Storage vMotion

Answer: A

Question No : 77

An administrator is creating a vApp for a multi-tiered application and needs to configure custom startup actions for each virtual machine.

What should the administrator do to enable this functionality?

- A. Verify that VMware Tools is installed on each virtual machine in the vApp.
- B. Ensure all virtual machines in the vApp are running hardware version 8 or later.
- C. Configure custom startup actions on the virtual machines, then add them to the vApp.
- D. Deploy a vSphere Management Assistant in the cluster and enable the vApp plug-in.

Answer: A

Question No : 78

A vSphere administrator is creating a vApp for a multi-tier application. Every time the vApp is started, the virtual machines perform a file system check.

Which action should the administrator take to resolve this issue?

- A. Change the shutdown action in the vApp to Guest Shutdown
- B. Change the shutdown action in the vApp to Graceful Shutdown
- C. Change the shutdown action in the vApp to Graceful Power Off
- D. Change the shutdown action in the vApp to Guest Power Off

Answer: A

Question No : 79

An administrator needs to configure a Linux virtual machine template to support guest customization. The administrator has installed VMware Tools.

Which additional component is necessary to enable Linux guest OS customization?

- A. Perl
- B. bash
- C. Python
- D. Sysprep

Answer: A

Question No : 80

A VMware administrator needs to export a vApp and create a self-contained package that has a single file.

Which format should the administrator use?

- A. Export as OVF
- B. Export as OVA
- C. Export as ZIP
- D. Export as ISO

Answer: B

Question No : 81

A vSphere administrator needs the ability to adjust the amount of guaranteed physical CPU and Memory resources to a virtual machine without incurring application downtime.

Which actions must the administrator perform?

- A. Enable CPU hotplug and Memory hotplug on the virtual machine.
- B. Adjust the number of CPUs and the Memory Configuration for the virtual machine.
- C. Adjust the CPU reservation slider and click the Reserve all Guest Memory checkbox.
- D. Adjust the CPU and Memory reservation sliders on the virtual machine.

Answer: D

Question No : 82

A system administrator has an application installed on a physical machine that is licensed to the MAC address of the physical NIC. This system needs to be virtualized.

What two methods could an administrator use to ensure the license will function in the virtual machine? (Choose two.)

- A. Manually set the MAC address for the vNIC in the guest OS
- B. Install the NIC from the physical server into the ESXi host
- C. Manually set the MAC address for the vNIC using the Web Client
- D. Configure the physical server's MAC address in the virtual switch

Answer: A,C

Question No : 83

An administrator needs to prevent two virtual machines from running on the same host at any time.

Which DRS rule should the administrator apply?

- A. vm-to-vm affinity
- B. vm-to-host affinity
- C. vm-to-vm anti-affinity
- D. vm-to-host anti-affinity

Answer: C

Question No : 84

A vSphere administrator needs to enable Distributed Resource Scheduling (DRS) in an existing vSphere environment:

- The environment contains a High Availability (HA) cluster with eight ESXi hosts.
- Six ESXi hosts are not in a cluster.
- DRS should be used on as many hosts as possible.
- Initial placement of virtual machines should be automatically performed.
- Migration recommendations should be provided, but not performed without approval.

Which procedure should the administrator perform to accomplish this task?

- A.** Select the datacenter and create a DRS cluster. Add the six remaining hosts to this cluster, then enable DRS. Edit the DRS settings and change the automation level to Partial.
- B.** Select the existing HA cluster. Add the six remaining hosts to the cluster. Enable DRS, then edit the settings and change the automation level to Manual.
- C.** Select the datacenter and create a DRS cluster. Add the six remaining hosts to this cluster, then enable DRS. Edit the DRS settings and change the automation level to Manual.
- D.** Select the existing HA cluster. Add the six remaining hosts to the cluster. Enable DRS, then edit the settings and change the automation level to Partial.

Answer: D

Question No : 85

An organization's wants to ensure that if a host in a High Availability (HA) cluster fails, critical virtual machines resume operation even if there are insufficient resources to continue to run all virtual machines in the cluster.

Which HA setting should be configured to ensure the cluster operates as expected?

- A.** VM restart priority
- B.** Admission Control policy

- C. VM monitoring sensitivity
- D. das.checkVmStateDelay

Answer: A

Question No : 86

A vSphere administrator needs to reconfigure the Distributed Power Management (DPM) threshold to be more aggressive.

Where should the administrator edit the settings of DPM in the vSphere Web Client?

- A. DPM plug-in settings
- B. Cluster settings
- C. ESXi host power settings
- D. vCenter Service Status

Answer: B

Question No : 87

An administrator has created a Virtual Flash Read Cache and needs to add a total 2TB of capacity to the cache. The administrator has a total of six SSD disks to add, but is unable to add one of the disks.

What is a likely cause of the problem?

- A. The SSD device size is less than 256GB.
- B. The SSD device size is greater than 4TB.
- C. The SSD device is a local disk.
- D. The SSD device contains existing data.

Answer: B

Question No : 88

A DRS cluster has been created with the following specifications:

- All mission critical virtual machines are in the root resource pool.
- All other virtual machines are placed into two child pools based on medium or low priority.
- The two child pools contain adequate resources needed by the medium and low priority virtual machines.
- The two child pools are reserving 35% of the total available resources of the cluster.

What is the advantage of leaving the mission critical virtual machines in the root resource pool?

- A.** The root resource pool has immediate access to new physical resources added to the cluster.
- B.** Virtual machines placed in the root resource pool have a higher vMotion priority in DRS.
- C.** Transparent Memory Page Sharing in the root resource pool has a higher weight than in child pools.
- D.** Virtual machines placed in the root resource pool have higher default share values.

Answer: A

Question No : 89

A vSphere administrator needs to temporarily disable DRS on a cluster containing a resource pool hierarchy.

Which procedure should the administrator follow to preserve the resource pool hierarchy while DRS is disabled?

- A.** Move the resource pool hierarchy out of the cluster prior to disabling DRS.
- B.** Save the resource pool hierarchy to the administrator's local machine prior to disabling DRS.
- C.** Backup the vCenter Server database and restore the database after re-enabling DRS.
- D.** Create a new cluster and move the resource pool hierarchy to the new cluster prior to disabling DRS.

Answer: B

Question No : 90

Microsoft Exams List

70-246 Dump PDF VCE	70-485 Dump PDF VCE	70-742 Dump PDF VCE	98-366 Dump PDF VCE
70-247 Dump PDF VCE	70-486 Dump PDF VCE	70-743 Dump PDF VCE	98-367 Dump PDF VCE
70-331 Dump PDF VCE	70-487 Dump PDF VCE	70-744 Dump PDF VCE	98-368 Dump PDF VCE
70-332 Dump PDF VCE	70-488 Dump PDF VCE	70-761 Dump PDF VCE	98-369 Dump PDF VCE
70-333 Dump PDF VCE	70-489 Dump PDF VCE	70-762 Dump PDF VCE	98-372 Dump PDF VCE
70-334 Dump PDF VCE	70-490 Dump PDF VCE	70-765 Dump PDF VCE	98-373 Dump PDF VCE
70-339 Dump PDF VCE	70-491 Dump PDF VCE	70-768 Dump PDF VCE	98-374 Dump PDF VCE
70-341 Dump PDF VCE	70-492 Dump PDF VCE	70-980 Dump PDF VCE	98-375 Dump PDF VCE
70-342 Dump PDF VCE	70-494 Dump PDF VCE	70-981 Dump PDF VCE	98-379 Dump PDF VCE
70-345 Dump PDF VCE	70-496 Dump PDF VCE	70-982 Dump PDF VCE	MB2-700 Dump PDF VCE
70-346 Dump PDF VCE	70-497 Dump PDF VCE	74-343 Dump PDF VCE	MB2-701 Dump PDF VCE
70-347 Dump PDF VCE	70-498 Dump PDF VCE	74-344 Dump PDF VCE	MB2-702 Dump PDF VCE
70-348 Dump PDF VCE	70-499 Dump PDF VCE	74-409 Dump PDF VCE	MB2-703 Dump PDF VCE
70-354 Dump PDF VCE	70-517 Dump PDF VCE	74-678 Dump PDF VCE	MB2-704 Dump PDF VCE
70-383 Dump PDF VCE	70-532 Dump PDF VCE	74-697 Dump PDF VCE	MB2-707 Dump PDF VCE
70-384 Dump PDF VCE	70-533 Dump PDF VCE	77-420 Dump PDF VCE	MB2-710 Dump PDF VCE
70-385 Dump PDF VCE	70-534 Dump PDF VCE	77-427 Dump PDF VCE	MB2-711 Dump PDF VCE
70-410 Dump PDF VCE	70-640 Dump PDF VCE	77-600 Dump PDF VCE	MB2-712 Dump PDF VCE
70-411 Dump PDF VCE	70-642 Dump PDF VCE	77-601 Dump PDF VCE	MB2-713 Dump PDF VCE
70-412 Dump PDF VCE	70-646 Dump PDF VCE	77-602 Dump PDF VCE	MB2-714 Dump PDF VCE
70-413 Dump PDF VCE	70-673 Dump PDF VCE	77-603 Dump PDF VCE	MB2-715 Dump PDF VCE
70-414 Dump PDF VCE	70-680 Dump PDF VCE	77-604 Dump PDF VCE	MB2-716 Dump PDF VCE
70-417 Dump PDF VCE	70-681 Dump PDF VCE	77-605 Dump PDF VCE	MB2-717 Dump PDF VCE
70-461 Dump PDF VCE	70-682 Dump PDF VCE	77-881 Dump PDF VCE	MB2-718 Dump PDF VCE
70-462 Dump PDF VCE	70-684 Dump PDF VCE	77-882 Dump PDF VCE	MB5-705 Dump PDF VCE
70-463 Dump PDF VCE	70-685 Dump PDF VCE	77-883 Dump PDF VCE	MB6-700 Dump PDF VCE
70-464 Dump PDF VCE	70-686 Dump PDF VCE	77-884 Dump PDF VCE	MB6-701 Dump PDF VCE
70-465 Dump PDF VCE	70-687 Dump PDF VCE	77-885 Dump PDF VCE	MB6-702 Dump PDF VCE
70-466 Dump PDF VCE	70-688 Dump PDF VCE	77-886 Dump PDF VCE	MB6-703 Dump PDF VCE
70-467 Dump PDF VCE	70-689 Dump PDF VCE	77-887 Dump PDF VCE	MB6-704 Dump PDF VCE
70-469 Dump PDF VCE	70-692 Dump PDF VCE	77-888 Dump PDF VCE	MB6-705 Dump PDF VCE
70-470 Dump PDF VCE	70-695 Dump PDF VCE	77-891 Dump PDF VCE	MB6-884 Dump PDF VCE
70-473 Dump PDF VCE	70-696 Dump PDF VCE	98-349 Dump PDF VCE	MB6-885 Dump PDF VCE
70-480 Dump PDF VCE	70-697 Dump PDF VCE	98-361 Dump PDF VCE	MB6-886 Dump PDF VCE
70-481 Dump PDF VCE	70-698 Dump PDF VCE	98-362 Dump PDF VCE	MB6-889 Dump PDF VCE
70-482 Dump PDF VCE	70-734 Dump PDF VCE	98-363 Dump PDF VCE	MB6-890 Dump PDF VCE
70-483 Dump PDF VCE	70-740 Dump PDF VCE	98-364 Dump PDF VCE	MB6-892 Dump PDF VCE
70-484 Dump PDF VCE	70-741 Dump PDF VCE	98-365 Dump PDF VCE	MB6-893 Dump PDF VCE

Cisco Exams List

010-151 Dump PDF VCE	350-018 Dump PDF VCE	642-737 Dump PDF VCE	650-667 Dump PDF VCE
100-105 Dump PDF VCE	352-001 Dump PDF VCE	642-742 Dump PDF VCE	650-669 Dump PDF VCE
200-001 Dump PDF VCE	400-051 Dump PDF VCE	642-883 Dump PDF VCE	650-752 Dump PDF VCE
200-105 Dump PDF VCE	400-101 Dump PDF VCE	642-885 Dump PDF VCE	650-756 Dump PDF VCE
200-120 Dump PDF VCE	400-151 Dump PDF VCE	642-887 Dump PDF VCE	650-968 Dump PDF VCE
200-125 Dump PDF VCE	400-201 Dump PDF VCE	642-889 Dump PDF VCE	700-001 Dump PDF VCE
200-150 Dump PDF VCE	400-251 Dump PDF VCE	642-980 Dump PDF VCE	700-037 Dump PDF VCE
200-155 Dump PDF VCE	400-351 Dump PDF VCE	642-996 Dump PDF VCE	700-038 Dump PDF VCE
200-310 Dump PDF VCE	500-006 Dump PDF VCE	642-997 Dump PDF VCE	700-039 Dump PDF VCE
200-355 Dump PDF VCE	500-007 Dump PDF VCE	642-998 Dump PDF VCE	700-101 Dump PDF VCE
200-401 Dump PDF VCE	500-051 Dump PDF VCE	642-999 Dump PDF VCE	700-104 Dump PDF VCE
200-601 Dump PDF VCE	500-052 Dump PDF VCE	644-066 Dump PDF VCE	700-201 Dump PDF VCE
210-060 Dump PDF VCE	500-170 Dump PDF VCE	644-068 Dump PDF VCE	700-205 Dump PDF VCE
210-065 Dump PDF VCE	500-201 Dump PDF VCE	644-906 Dump PDF VCE	700-260 Dump PDF VCE
210-250 Dump PDF VCE	500-202 Dump PDF VCE	646-048 Dump PDF VCE	700-270 Dump PDF VCE
210-255 Dump PDF VCE	500-254 Dump PDF VCE	646-365 Dump PDF VCE	700-280 Dump PDF VCE
210-260 Dump PDF VCE	500-258 Dump PDF VCE	646-580 Dump PDF VCE	700-281 Dump PDF VCE
210-451 Dump PDF VCE	500-260 Dump PDF VCE	646-671 Dump PDF VCE	700-295 Dump PDF VCE
210-455 Dump PDF VCE	500-265 Dump PDF VCE	646-985 Dump PDF VCE	700-501 Dump PDF VCE
300-070 Dump PDF VCE	500-275 Dump PDF VCE	648-232 Dump PDF VCE	700-505 Dump PDF VCE
300-075 Dump PDF VCE	500-280 Dump PDF VCE	648-238 Dump PDF VCE	700-601 Dump PDF VCE
300-080 Dump PDF VCE	500-285 Dump PDF VCE	648-244 Dump PDF VCE	700-602 Dump PDF VCE
300-085 Dump PDF VCE	500-290 Dump PDF VCE	648-247 Dump PDF VCE	700-603 Dump PDF VCE
300-101 Dump PDF VCE	500-801 Dump PDF VCE	648-375 Dump PDF VCE	700-701 Dump PDF VCE
300-115 Dump PDF VCE	600-199 Dump PDF VCE	648-385 Dump PDF VCE	700-702 Dump PDF VCE
300-135 Dump PDF VCE	600-210 Dump PDF VCE	650-032 Dump PDF VCE	700-703 Dump PDF VCE
300-160 Dump PDF VCE	600-211 Dump PDF VCE	650-042 Dump PDF VCE	700-801 Dump PDF VCE
300-165 Dump PDF VCE	600-212 Dump PDF VCE	650-059 Dump PDF VCE	700-802 Dump PDF VCE
300-180 Dump PDF VCE	600-455 Dump PDF VCE	650-082 Dump PDF VCE	700-803 Dump PDF VCE
300-206 Dump PDF VCE	600-460 Dump PDF VCE	650-127 Dump PDF VCE	810-403 Dump PDF VCE
300-207 Dump PDF VCE	600-501 Dump PDF VCE	650-128 Dump PDF VCE	820-424 Dump PDF VCE
300-208 Dump PDF VCE	600-502 Dump PDF VCE	650-148 Dump PDF VCE	840-425 Dump PDF VCE
300-209 Dump PDF VCE	600-503 Dump PDF VCE	650-159 Dump PDF VCE	
300-210 Dump PDF VCE	600-504 Dump PDF VCE	650-281 Dump PDF VCE	
300-320 Dump PDF VCE	640-692 Dump PDF VCE	650-393 Dump PDF VCE	
300-360 Dump PDF VCE	640-875 Dump PDF VCE	650-472 Dump PDF VCE	
300-365 Dump PDF VCE	640-878 Dump PDF VCE	650-474 Dump PDF VCE	
300-370 Dump PDF VCE	640-911 Dump PDF VCE	650-575 Dump PDF VCE	
300-375 Dump PDF VCE	640-916 Dump PDF VCE	650-621 Dump PDF VCE	
300-465 Dump PDF VCE	642-035 Dump PDF VCE	650-663 Dump PDF VCE	
300-470 Dump PDF VCE	642-732 Dump PDF VCE	650-665 Dump PDF VCE	
300-475 Dump PDF VCE	642-747 Dump PDF VCE	650-754 Dump PDF VCE	

HOT EXAMS

Cisco

[100-105 Dumps VCE PDF](#)
[200-105 Dumps VCE PDF](#)
[300-101 Dumps VCE PDF](#)
[300-115 Dumps VCE PDF](#)
[300-135 Dumps VCE PDF](#)
[300-320 Dumps VCE PDF](#)
[400-101 Dumps VCE PDF](#)
[640-911 Dumps VCE PDF](#)
[640-916 Dumps VCE PDF](#)

Microsoft

[70-410 Dumps VCE PDF](#)
[70-411 Dumps VCE PDF](#)
[70-412 Dumps VCE PDF](#)
[70-413 Dumps VCE PDF](#)
[70-414 Dumps VCE PDF](#)
[70-417 Dumps VCE PDF](#)
[70-461 Dumps VCE PDF](#)
[70-462 Dumps VCE PDF](#)
[70-463 Dumps VCE PDF](#)
[70-464 Dumps VCE PDF](#)
[70-465 Dumps VCE PDF](#)
[70-480 Dumps VCE PDF](#)
[70-483 Dumps VCE PDF](#)
[70-486 Dumps VCE PDF](#)
[70-487 Dumps VCE PDF](#)

CompTIA

[220-901 Dumps VCE PDF](#)
[220-902 Dumps VCE PDF](#)
[N10-006 Dumps VCE PDF](#)
[SY0-401 Dumps VCE PDF](#)