



Vendor: VMware

Exam Code: VCP550

**Exam Name: VMware Certified Professional on vSphere 5
(VCP550) Exam**

Version: Demo

QUESTION 1

An administrator is planning a vSphere infrastructure with the following specific networking requirements:

- The ability to shape inbound (RX) traffic
- Support for Private VLANs (PVLANS)
- Support for LLDP (Link Layer Discovery Protocol)

What is the minimum vSphere Edition that will support these requirements?

- A. vSphere Essentials Plus
- B. vSphere Standard
- C. vSphere Enterprise
- D. vSphere Enterprise Plus

Correct Answer: D

QUESTION 2

What two IT infrastructure components are virtualized by vSphere Essentials? (Choose two.)

- A. Networks
- B. Applications
- C. Storage
- D. Management

Correct Answer: AC

QUESTION 3

An administrator attempts to install vCenter Single Sign-On Server. The installer returns an error message indicating that the installation failed. Prior to the installation, all setup prerequisites were met. The administrator has generated a vCenter Server Single Sign-On support bundle. Which two files should the administrator analyze to determine the cause of the failure? (Choose two.)

- A. Server\utils\logs\imsTrace.log
- B. Server\utils\logs\install.txt
- C. %TEMP%\utils\logs\vminst.log
- D. %TEMP%\vminst.log

Correct Answer: AD

QUESTION 4

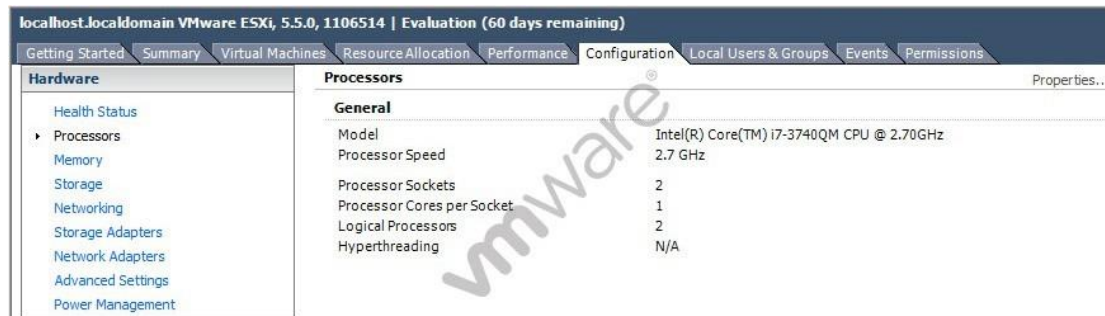
Which Single Sign-On deployment mode should an administrator use for two 5.x vCenter Servers configured with linked mode?

- A. Basic Single Sign-On with vCenter Server Heartbeat
- B. Multisite Single Sign-On
- C. Basic Single Sign-On
- D. Single Sign-On with Linked Mode

Correct Answer: B

QUESTION 5

Which two statements below could explain why the vSphere Client is reporting N/A for hyperthreading? (Choose two.)



- A. The physical CPUs in the host do not support hyperthreading.
- B. Hyperthreading is disabled in the host's BIOS.
- C. The physical CPUs in the host are not multi-core.
- D. The number of CPUs meets or exceeds the maximum without hyperthreading.

Correct Answer: BC

QUESTION 6

Immediately after installing an ESXi host, an administrator needs to examine the following log files:

- /var/log/hostd.log
- /var/log/vmkernel.log
- /var/log/vpxa.log

Which two connections would allow an administrator to examine these files? (Choose two.)

- A. Connecting to the Direct Console User Interface.

- B. Attaching a vSphere Client directly to the ESXi host.
- C. Attaching the vSphere Web Client directly to the ESXi host.
- D. Attaching the vSphere Client to the vCenter Server managing the ESXi host.

Correct Answer: AB

QUESTION 7

An administrator is upgrading a vSphere Distributed Switch. The existing switch is version 5.0 and the administrator wants to upgrade to the latest version possible. The environment contains several ESXi 5.1 hosts. Which two options are available to ensure that the upgraded switch will be compatible with these hosts? (Choose two.)

- A. Upgrade the vSphere Distributed Switch to 5.5.
- B. Upgrade the ESXi 5.1 hosts to version 5.5, then upgrade the vSphere Distributed Switch to 5.5.
- C. Upgrade the vSphere Distributed Switch to 5.1.
- D. Upgrade the ESXi host switches to 5.5, then upgrade the vSphere Distributed Switch to 5.5.

Correct Answer: BC

QUESTION 8

To avoid unnecessary planned downtime, what is the minimum version of VMware Tools that, if installed, will decrease the need for virtual machine reboots following VMware Tools upgrades?

- A. 5.5
- B. 5.1
- C. 5.0
- D. 4.1

Correct Answer: B

QUESTION 9

Which two Identity Sources are available to add for vCenter Single Sign-On authentication? (Choose two.)

- A. LocalOS
- B. OpenLDAP
- C. NIS as an LDAP Server
- D. VCMSDS

Correct Answer: AB

QUESTION 10

Which VLAN configuration requires switch connectivity defined as an access port?

- A. Private VLAN
- B. External Switch Tagging
- C. Virtual Guest Tagging
- D. Virtual Switch Tagging

Correct Answer: B

QUESTION 11

An administrator needs to deploy several virtual machines. Storage contention between the virtual machines should be managed by the VMkernel. Some of the virtual machines will use MSCS and should be highly available across the ESXi 5.5 hosts. Which two storage options meet these requirements? (Choose two.)

- A. iSCSI
- B. NFS
- C. Fibre Channel
- D. vSAN

Correct Answer: AC

QUESTION 12

Which two precautions should a vSphere administrator take before increasing the size of a VMFS datastore? (Choose two.)

- A. Unmount the datastore
- B. Perform a rescan to ensure that all hosts see the most current storage
- C. Quiesce I/O on all disks involved
- D. Shut down all virtual machines stored in the datastore

Correct Answer: BC

QUESTION 13

What action should the vSphere administrator take to allow for a new vApp to be created in the cluster?

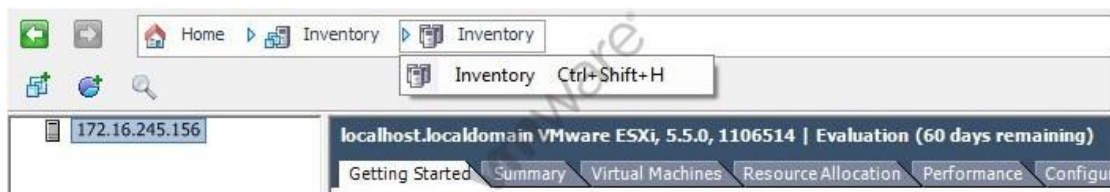


- A. Enable Distributed Resource Scheduling on the cluster.
- B. Create a Resource Pool in the cluster, and create the vApp in the Resource Pool.
- C. Enable High Availability on the cluster.
- D. Create a new Datacenter, and create the vApp in the new Datacenter.

Correct Answer: A

QUESTION 14

A vSphere administrator receives a report of an issue with a vApp. After connecting to the environment with the vSphere Client, the administrator does not see the vApp, but instead sees the inventory shown in the exhibit. What explains this behavior?



- A. The administrator is connected to the ESXi host running the vApp.
- B. The administrator is using the Web Client.
- C. The vApp is in a partially deleted state.
- D. The vApp has been converted to a resource pool.

Correct Answer: A

QUESTION 15

A system administrator is unable to clone a windows 2008 server while connected directly to an ESXi host through vSphere Client. Which two methods can be used to complete the task? (Choose two.)

- A. Connect to vCenter Server and retry the operation.
- B. Use VMware Converter to perform the operation.
- C. Connect to the host using the Web Client and retry the operation.
- D. Use VMware Configuration Manager to perform the operation.

Correct Answer: AB

QUESTION 16

An administrator needs to create and provision new virtual machines from a master image that can not be edited or powered on. Which type of resource is most appropriate for the administrator to perform the task?

- A. Full Clone
- B. Linked Clone
- C. Template
- D. Snapshot

Correct Answer: C

QUESTION 17

A vSphere administrator is unable to vMotion a virtual machine between two hosts. An error message indicates that the USB device is not accessible on the target host. What is causing this issue?

- A. The USB device was not enabled for vMotion when it was added to the virtual machine.
- B. ESXi does not support vMotion with a USB device attached to the virtual machine.
- C. The VMkernel port for vMotion is not enabled for USB traffic.
- D. The virtual machine has the wrong USB controller installed.

Correct Answer: A

QUESTION 18

A vSphere administrator needs to configure a virtual machine to meet a guaranteed CPU performance profile. Which configuration setting could the administrator choose?

- A. Set the CPU Limit to High

- B. Set the CPU Shares to 500MHz
- C. Set the CPU Guarantee to High
- D. Set the CPU Reservation to 500MHz

Correct Answer: D

QUESTION 19

An organization's datastores are configured in a fully automated Storage Distributed Resource Scheduler (SDRS) cluster. The vSphere administrator determines that virtual machines are being migrated between datastores even though the datastores look evenly balanced. On further investigation, the administrator determines that the datastore's utilization percentages differ by 2%. Which Storage DRS setting should the administrator change to prevent the virtual machines from migrating prematurely?

- A. Edit the Storage DRS cluster settings to increase the percentage of the Space Utilization Difference threshold.
- B. Edit the Storage DRS cluster settings to increase the percentage of the I/O imbalance threshold.
- C. Edit the Storage DRS cluster settings to increase the size of the Space Utilization Difference threshold.
- D. Edit the Storage DRS cluster settings to increase the size of the I/O imbalance threshold.

Correct Answer: A

QUESTION 20

A vSphere administrator enables Fault Tolerance on a powered off virtual machine that has the following configuration:

- The virtual machine's single thin provisioned virtual disk is sized at 100GB.
- The datastore that houses the virtual machine has 120GB of free space.

After Fault Tolerance has been configured, another administrator attempts to use Enhanced vMotion to move a 30GB virtual machine file into the same datastore and receives an error. What condition could cause this behavior?

- A. Fault Tolerance inflated the virtual machine's virtual disk file.
- B. Fault Tolerance created a temporary logging file on the same datastore.
- C. Fault Tolerance created a secondary copy of the virtual machine's virtual disk file.
- D. The Fault Tolerance logging file ran out of disk space.

Correct Answer: A

QUESTION 21

While testing a Fault Tolerance setup on a virtual machine, a system administrator notices that the DRS automation level of the virtual machine has been automatically set to Disabled. The administrator needs to enable DRS to migrate the Fault Tolerance virtual machine to balance the cluster's CPU and memory loads. What should the administrator do?

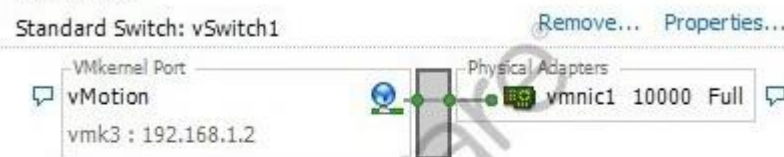
- A. Enable Enhanced vMotion Compatibility (EVC) in the vSphere cluster.
- B. Move the virtual machine to a VMFS 5 datastore built on shared storage.
- C. Manually change the DRS automation level of the virtual machine to Enabled.
- D. Move the secondary virtual machine to a host with a Fault Tolerance VMkernel port.

Correct Answer: A

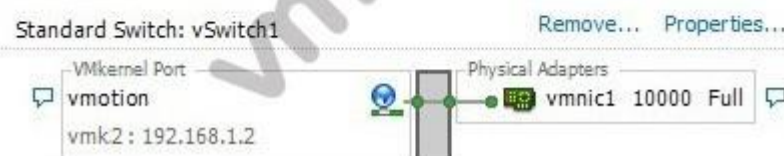
QUESTION 22

A vSphere administrator has misconfigured vMotion in such a way that vMotion migrations are failing. Based on the information shown, what is the cause of the problem?

Host 1:



Host 2:



- A. The vMotion VMkernel ports on the hosts are configured with the same IP address.
- B. The labels of the vMotion VMkernel ports are not identical.
- C. The vMotion VMkernel ports are not labeled identically.
- D. The vMotion VMkernel ports are using the same uplink.

Correct Answer: A

QUESTION 23

A system administrator detects that a VDP Appliance that has been operational for 6 months has become inconsistent or unstable. Which action should the administrator take to recover the VDP appliance and what will be the impact on the vSphere environment?

- A. Perform a VDP rollback to the most recent validated checkpoint. All backup and configuration changes made after the checkpoint will be lost.
- B. Perform a VDP rollback to the most recent validated checkpoint. Configuration changes after the checkpoint will be lost, but backup data will remain intact.
- C. Restore a copy of the latest backup of the VDP appliance. All backup data and configuration changes after the backup was made will be lost.
- D. Restore a copy of the latest backup of the VDP appliance. All configuration changes after the backup was made will be lost, but backup data will remain intact.

Correct Answer: A

QUESTION 24

Which two features are different between VDP and VDPA? (Choose two.)

- A. Support for guest level backups of SQL and Exchange
- B. Ability to perform file level recovery
- C. Virtual machines supported per appliance
- D. Support for image level backups

Correct Answer: AC

QUESTION 25

An administrator must determine which Update Manager procedures can be performed using the vSphere Web Client, and which must be completed using the Windows vSphere client. Which two tasks require the use of the Windows vSphere client? (Choose two.)

- A. Attach and detach baselines to inventory objects
- B. Scan inventory objects for compliance
- C. Create a baseline for an inventory object
- D. Stage a baseline for remediation

Correct Answer: CD

QUESTION 26

A vSphere administrator needs to use vSphere Update Manager to perform orchestrated upgrades of virtual machines. Which two options are available for virtual machine remediation? (Choose two.)

- A. Upgrade virtual machine hardware
- B. Upgrade VMware tools
- C. Upgrade virtual machine appliances
- D. Upgrade virtual machine guest OS

Correct Answer: AB

QUESTION 27

Which two are supported object types for Update Manager? (Choose two.)

- A. virtual appliances
- B. templates
- C. vApps
- D. hosts

Correct Answer: AD

QUESTION 28

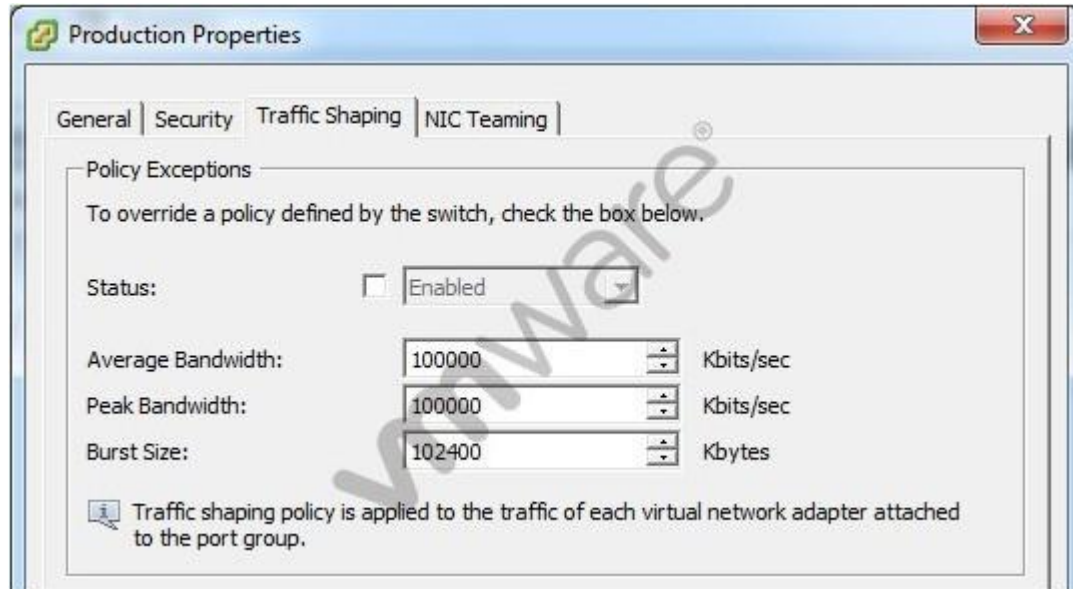
A vSphere administrator needs a way of sending noncritical ESXi events to a remote server. Due to budget constraints, no additional costs should be incurred. Which tool will best meet this requirement?

- A. vSphere Syslog Collector
- B. vSphere ESXi Dump Collector
- C. vSphere vCenter Log Insight
- D. vSphere Management Appliance

Correct Answer: A

QUESTION 29

An administrator determines that traffic shaping does not appear to be working on Production, a virtual machine port group on vSwitch1. Traffic shaping is working on all other port groups on the switch. The administrator examines the Traffic Shaping settings as shown in the exhibit:



What should the administrator do to resolve the problem?

- A. Select the Status checkbox to enable Traffic Shaping on the portgroup.
- B. Reduce the Average Bandwidth to 50% of the Peak Bandwidth.
- C. Reduce the Burst Size to 50% of the Peak Bandwidth.
- D. Click the Security tab and create the necessary security exception.

Correct Answer: A

QUESTION 30

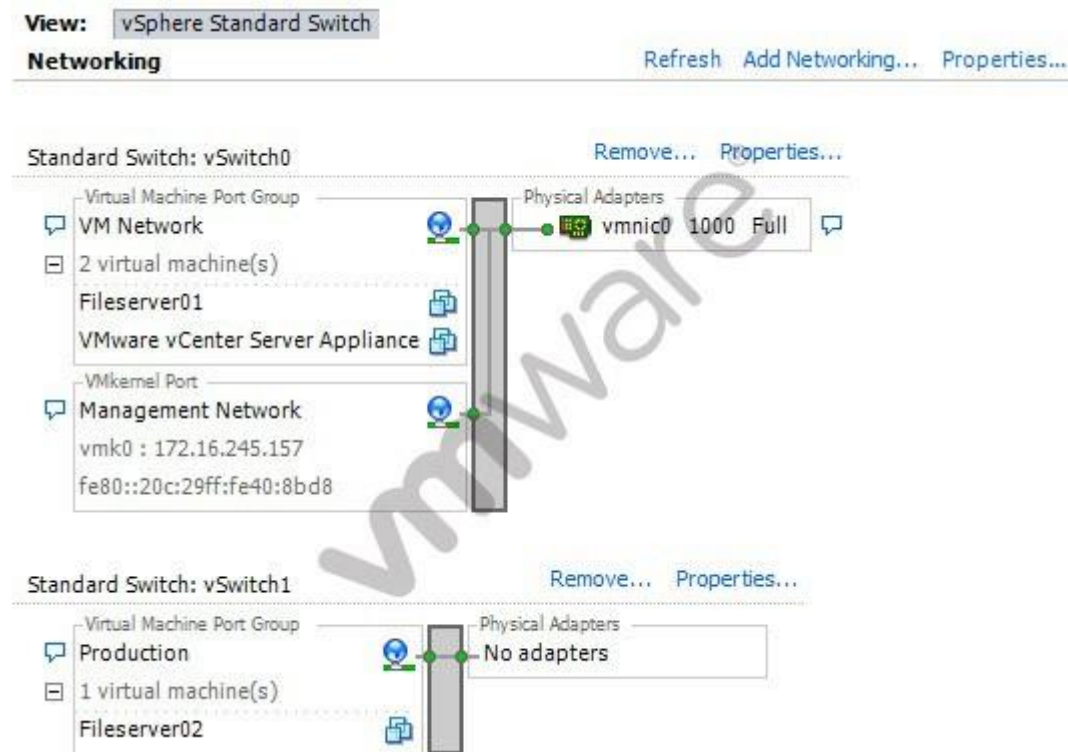
An administrator determines that when a host residing in a High Availability (HA) cluster fails, the virtual machines fail to restart on a remaining host, or will only restart after a long delay. Which two conditions would account for this behavior? (Choose two.)

- A. The virtual machines were not protected by vSphere HA at the time the failure occurred.
- B. Distributed Resource Scheduler was not enabled at the time the failure occurred.
- C. There is insufficient spare capacity on hosts with which the virtual machines are compatible.
- D. The virtual machines contain physical Raw Device Mappings.

Correct Answer: AC

QUESTION 31

The vSphere administrator needs to remove the Production virtual machine port group from an ESXi host. The ESXi host's Networking Configuration tab is shown in the exhibit.



After disconnecting the Fileserver02 VM, what step does the administrator need to take, assuming that vSwitch1 will still be needed for further configuration?

- A. Remove the Production port group by accessing the properties for the port group.
- B. Remove the Production port group by accessing the properties for vSwitch1.
- C. Remove the Production port group by accessing the properties for the Network.
- D. Remove the Production port group by removing vSwitch1.

Correct Answer: B

QUESTION 32

A vSphere administrator can create an alarm on which two objects? (Choose two.)

- A. LUN
- B. Datastore
- C. Template
- D. Folder

Correct Answer: BD

QUESTION 33

What is portrayed in the performance chart?



- A. The ESXi host running the VM has Transparent Page Sharing enabled.
- B. The virtual machine's memory share value is set too high.
- C. The virtual machine is memory constrained.
- D. The ESXi host running the VM is low on memory.

Correct Answer: D

QUESTION 34

An administrator needs to modify a virtual machine alert to increase the threshold value of the trigger. Once connected to the vCenter Server, the administrator navigates to the virtual machine to make the change. However, the administrator is unable to edit the alarm. What is the reason that this alarm cannot be edited?

- A. The alarm was not defined on this inventory object.
- B. The administrator is not the owner of this inventory object.
- C. The alarm was not created by the administrator.
- D. The alarm has not been acknowledged.

Correct Answer: A

QUESTION 35

An administrator using vCenter Operations Manager is viewing the health of an ESXi host in the environment. There have NOT been any reported outages or issues with the ESXi host, but the administrator needs to determine if the host is behaving normally. Which minor badge should the administrator investigate to determine this information?

- A. Faults
- B. Anomalies
- C. Stress
- D. Health

Correct Answer: B

QUESTION 36

Which minor badge scores are used to calculate the Health score in vCenter Operations Manager?

- A. Time remaining, Capacity remaining, Stress
- B. Workload, Anomalies, Faults
- C. Stress, Faults, Risk
- D. Reclaimable Waste, Density

Correct Answer: B

QUESTION 37

A small company wants to use VMware products for its production systems. The system administrator needs to recommend a solution that will deliver High Availability to the company's production applications. What is minimum vSphere offering that will support this requirement?

- A. vSphere Essentials
- B. vSphere Essentials Plus
- C. vSphere Hypervisor
- D. vSphere Standard

Correct Answer: B

QUESTION 38

A developer needs to create a multi-tier development stack for a home lab. Which vSphere product will support the architecture required for the least software cost?

- A. vSphere Hypervisor

- B. vSphere Essentials
- C. VMware Player
- D. VMware Workstation

Correct Answer: A

QUESTION 39

An administrator is unable to login to vCenter Server when using the vSphere web client. The administrator successfully accessed vCenter Server using the client earlier the same day. What is the most appropriate first step the administrator should take to resolve this issue?

- A. Verify the web browser being used has Adobe Flash plugin version 11.5 or later.
- B. Verify the vCenter Single Sign-On service is running on the vCenter Server.
- C. Verify the vSphere Web Server service is running on the vCenter Server.
- D. Verify the administrator has permissions configured in vCenter Server.

Correct Answer: B

QUESTION 40

An administrator is evaluating whether to deploy vCenter Server on a Windows server or on a vCenter Server appliance. The administrator has the following requirements:

- A web browser will be utilized to manage the vSphere environment.
- 16 ESXi hosts will be deployed.
- Licenses must be shared with a vCenter Server at another site.
- An external Oracle 10g database server will be used to host the vCenter Server database.

Why will the administrator need to deploy vCenter Server on a Windows server?

- A. Linked Mode is a requirement for the solution.
- B. Oracle 10g is a requirement for the solution.
- C. The vSphere web client is a requirement for the solution.
- D. Management of more than 5 hosts is a requirement for the solution.

Correct Answer: A

EnsurePass.com Members Features:

1. Verified Answers researched by industry experts.
2. Q&As are downloadable in PDF and VCE format.
3. 98% success Guarantee and **Money Back** Guarantee.
4. Free updates for **180** Days.
5. **Instant Access to download the Items**

View list of All Exam provided:

<http://www.ensurepass.com/certifications?index=A>

To purchase Lifetime Full Access Membership click here:

<http://www.ensurepass.com/user/register>

Valid Discount Code for 2015: JREH-G1A8-XHC6

To purchase the HOT Exams:

<u>Cisco</u>		<u>CompTIA</u>		<u>Oracle</u>	<u>VMWare</u>	<u>IBM</u>
<u>100-101</u>	<u>640-554</u>	<u>220-801</u>	<u>LX0-101</u>	<u>1Z0-051</u>	<u>VCAD510</u>	<u>C2170-011</u>
<u>200-120</u>	<u>200-101</u>	<u>220-802</u>	<u>N10-005</u>	<u>1Z0-052</u>	<u>VCP510</u>	<u>C2180-319</u>
<u>300-206</u>	<u>640-911</u>	<u>BR0-002</u>	<u>SG0-001</u>	<u>1Z0-053</u>	<u>VCP550</u>	<u>C4030-670</u>
<u>300-207</u>	<u>640-916</u>	<u>CAS-001</u>	<u>SG1-001</u>	<u>1Z0-060</u>	<u>VCAC510</u>	<u>C4040-221</u>
<u>300-208</u>	<u>640-864</u>	<u>CLO-001</u>	<u>SK0-003</u>	<u>1Z0-474</u>	<u>VCP5-DCV</u>	<u>RedHat</u>
<u>350-018</u>	<u>642-467</u>	<u>ISS-001</u>	<u>SY0-301</u>	<u>1Z0-482</u>	<u>VCP510PSE</u>	<u>EX200</u>
<u>352-001</u>	<u>642-813</u>	<u>JK0-010</u>	<u>SY0-401</u>	<u>1Z0-485</u>		<u>EX300</u>
<u>400-101</u>	<u>642-832</u>	<u>JK0-801</u>	<u>PK0-003</u>	<u>1Z0-580</u>		
<u>640-461</u>	<u>642-902</u>			<u>1Z0-820</u>		

