



**Vendor: VMware**

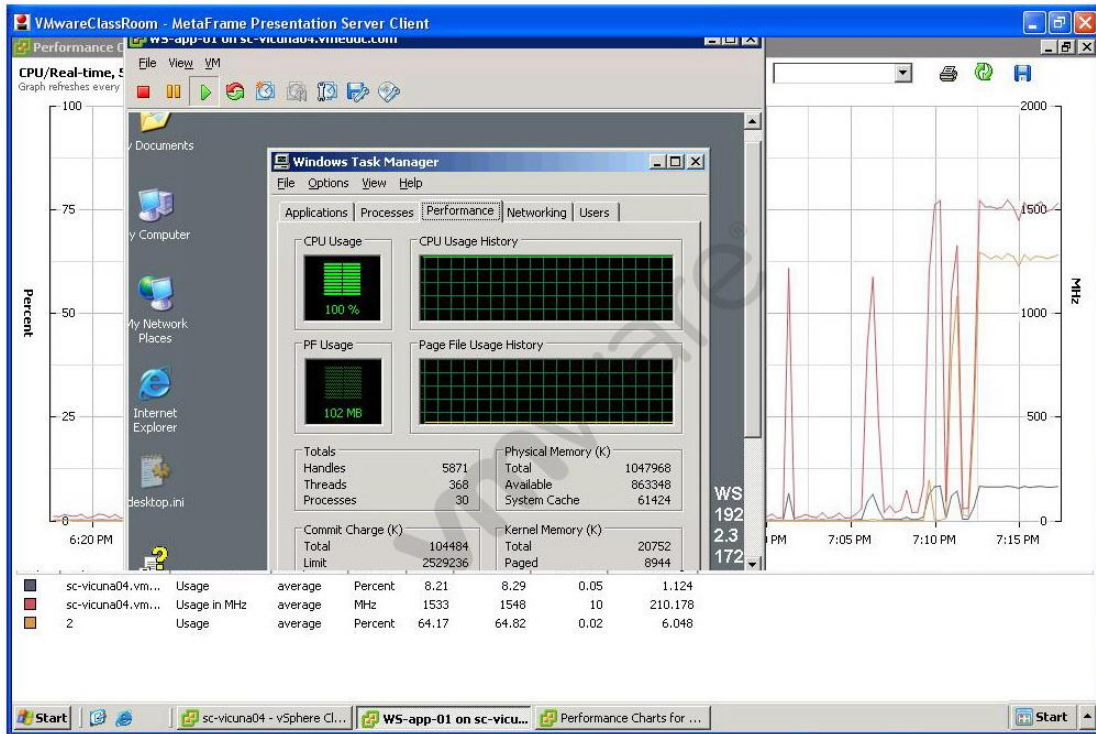
**Exam Code: VCP5-DCV**

**Exam Name: VMware Certified Professional 5 - Data Center  
Virtualization**

**Version: Demo**

**QUESTION 1**

An administrator has deployed a new virtual machine on an ESXi 5.x host. Users are complaining of poor performance on the application running on the virtual machine. Performance tools display the results shown in the exhibit. Which two tasks might improve the user experience? (Choose two.)



- A. Add a vCPU to the virtual machine
- B. Remove CPU affinity on the advanced CPU setting of the virtual machine
- C. Migrate the virtual machine to another ESXi host
- D. Remove the limit on the CPU settings of the virtual machine

**Correct Answer: AD**

**QUESTION 2**

An administrator notices that when a virtual machine is placed into a resource pool, a warning indicates that the virtual machine will receive a very large percentage of the total shares for memory. Which action can be taken to resolve this problem?

- A. Increase the memory resource allocation to the resource pool.
- B. Increase the share value for the resource pool.
- C. Change the shares setting from custom to high, medium, or low for the virtual machine.
- D. Decrease the memory allocation for the virtual machine.

**Correct Answer: C**

**QUESTION 3**

An administrator views the Fault Tolerance pane of the Summary tab of a virtual machine and finds that the current status is Not Protected. What are two vSphere Fault Tolerance states that would cause the virtual machine to not be protected? (Choose two.)

- A. Stopped - Fault Tolerance has been stopped on the secondary virtual machine.
- B. Need Secondary VM - The primary virtual machine is running without a secondary virtual machine and is not protected
- C. Need Primary VM - The secondary virtual machine is running, and a new primary virtual machine cannot be generated.
- D. Disabled - Fault Tolerance is disabled.

**Correct Answer: BD**

**QUESTION 4**

Which two conditions prevent the application of a host profile to an ESXi 5.x host? (Choose two.)

- A. The host has multiple profiles attached.
- B. The host has not been placed into maintenance mode.
- C. The host is running virtual machines.
- D. The host is an ESXi host.

**Correct Answer: BC**

**QUESTION 5**

An administrator is editing the IP allocation policy for a vApp. Which three options are available? (Choose three.)

- A. Automatic
- B. Roaming
- C. Transient
- D. DHCP
- E. Fixed

**Correct Answer: CDE**

#### QUESTION 6

ACME Junkmail Incorporated has been utilizing templates in their environment. They are running a 10- node ESXi 5.x Cluster and DRS has not been configured. Several virtual machines have been deployed from this template and successfully powered on, but a newly deployed virtual machine will not power on. There appear to be adequate CPU and Memory resources available on the host. Which three things can be done to allow more virtual machines to be deployed into the cluster from this template? (Choose three.)

- A. Select a different datastore for the virtual machine
- B. Move the swap file to a different location
- C. Deploy the virtual machine to a different host using the same datastore
- D. Enable DRS on the cluster to balance the virtual machine load out across hosts
- E. Increase the virtual machine memory reservation

**Correct Answer: ABE**

#### QUESTION 7

What are three valid objects to place in a vApp? (Choose three.)

- A. Folders
- B. Hosts
- C. Resource pools
- D. vApps
- E. Virtual machines

**Correct Answer: CDE**

#### QUESTION 8

Which three Storage I/O Control conditions might trigger the Non-VI workload detected on the datastore alarm? (Choose three.)

- A. The datastore is connected to an ESX/ESXi 4.0 host that does not support Storage I/O Control.
- B. The datastore is on an array that is performing system tasks such as replication.
- C. The datastore is utilizing active/passive multipathing or NMP (Native Multi-Pathing).
- D. The datastore is storing virtual machines with one or more snapshots.
- E. The datastore is connected to an ESX/ESXi 4.0 host that is not managed by vCenter.

**Correct Answer: ABE**

**QUESTION 9**

An administrator has just finished deploying a vApp for a web service. What three options are available to the administrator for IP allocation within the vApp? (Choose three.)

- A. Transient
- B. Fixed
- C. DHCP
- D. Bridged
- E. NAT

**Correct Answer: ABC**

**QUESTION 10**

An administrator is working to implement Storage Profiles in their environment. Which two ways can storage capabilities be generated? (Choose two.)

- A. They are generated by Datastore Clusters as LUNs are added to the cluster.
- B. They are automatically determined by the Storage Profile when it is created.
- C. They can be retrieved from the array through the VMware APIs for Storage Awareness (VASA).
- D. They can be manually generated by the administrator.

**Correct Answer: CD**

**QUESTION 11**

Which VMware solution uses the security of a vSphere implementation and provides linked-clone technology to virtual desktops?

- A. VMware ACE
- B. VMware View
- C. VMware Workstation
- D. VMware ThinApp

**Correct Answer: B**

**QUESTION 12**

Which two conditions will prevent a virtual machine from being successfully migrated using Storage vMotion? (Choose two.)

- A. The virtual machine has an RDM.
- B. The virtual machine has Fault Tolerance enabled.

- C. The virtual machine is running on a vSphere 5.x Standard host.
- D. The virtual machine has a disk stored on an NFS datastore.

**Correct Answer: AB**

#### **QUESTION 13**

Under which two conditions can vStorage APIs for Array Integration (VAAI) provide a performance benefit? (Choose two.)

- A. When a virtual disk has VMDK files stored on an NFS datastore.
- B. When a virtual disk is created using the New Virtual Machine wizard.
- C. When cloning a virtual machine with snapshots.
- D. When a virtual disk is deleted.

**Correct Answer: AD**

#### **QUESTION 14**

An administrator is enabling Enhanced vMotion Compatibility (EVC) in a DRS cluster. The administrator wants only hosts with the newest Intel processors added to the cluster. Which setting satisfies this requirement?

- A. The baseline with the most CPUs listed.
- B. The baseline with the fewest CPUs listed.
- C. Any baseline that contains Future Intel processors.
- D. Create a new baseline and add only the latest processor family.

**Correct Answer: B**

#### **QUESTION 15**

Which two conditions must exist on all hosts in the cluster if Enhanced vMotion Compatibility (EVC) is used? (Choose two.)

- A. The cluster must be enabled for DRS.
- B. All hosts in the cluster must be running ESX/ESXi 3.5 Update 2 or later.
- C. All hosts in the cluster must have hardware virtualization support enabled.
- D. The cluster must be enabled for HA.

**Correct Answer: BC**

**QUESTION 16**

Users are experiencing performance issues when updating their database hosted on a virtual machine. The administrator determines that disk I/O is high across one of the HBAs on the ESXi host containing the virtual machine. What is the action will most likely correct the issue without significantly impacting other users or datastores?

- A. Manually configure the disk multipathing policy to Round Robin for the datastore
- B. Migrate the virtual machine to an NFS datastore using Storage vMotion
- C. Use Storage vMotion to migrate the virtual machine to a new VMFS5 datastore
- D. Map additional LUNs to the ESXi host and extend the datastores

**Correct Answer: A**

**QUESTION 17**

An administrator takes a vSphere snapshot of a virtual machine and applies an OS update. After confirming the update the administrator cannot enable Fault Tolerance on the virtual machine and suspects there are snapshots that have not been consolidated. Which two operations can the administrator perform to verify consolidation is needed? (Choose two.)

- A. Expose the Needs Consolidation column in the virtual machines tab of the host.
- B. Browse the datastore containing the vmdk files and look for files with the "-delta.vmdk" extension.
- C. Expose the Needs Consolidation column in the virtual machine summary tab.
- D. Select and run the vSphere Cluster HealthCheck from the right-click menu of the cluster object.

**Correct Answer: AB**

**QUESTION 18**

An administrator has created a virtual machine that will be accessed from a public kiosk. Management has requested that the virtual machine be reset to a known state once a week or on demand if requested. Which method is the simplest way to meet this requirement?

- A. Configure the storage array to be vSphere aware and script routine array snapshot restores of the datastore.
- B. Implement a 3rd party imaging server and PXE boot the virtual machine off a static image.
- C. Set the VMDKs of the virtual machine to be Independent-Nonpersistent and schedule restarts of the virtual machine.
- D. Create Nonpersistent disks for the virtual machine and set the guest OS to reboot once a week.

**Correct Answer: C**

**QUESTION 19**

What are three true statements about quiescing virtual machine snapshots? (Choose three.)

- A. vSphere snapshot quiescing only occurs on Windows guest OSes.
- B. The quiescing operation is automatic with any snapshot.
- C. The quiescing operation varies by guest OS.
- D. Quiescing should occur before array-based snapshots to ensure consistency.
- E. VMware Tools is required for quiescing to be successful.

**Correct Answer: CDE**

**QUESTION 20**

An administrator has deployed vCenter Data Recovery and wants the largest possible de-duplication store. Which three storage options can be used? (Choose three.)

- A. Two CIFS shares
- B. Two RDMS on a FCP array
- C. One NFS mount on the ESXi host and one RDMS on an iSCSI array
- D. One CIFS share and one FCP RDM
- E. Two NFS mounts on the ESXi host

**Correct Answer: BCE**

**QUESTION 21**

An administrator has recently upgraded their Update Manager infrastructure to vSphere 5.x. Several hosts and virtual machines have not been upgraded yet. Which vSphere component when upgraded will have the least impact to the existing environment?

- A. Virtual Machine Hardware
- B. ESX Hosts
- C. VMFS datastores
- D. VMware Tools

**Correct Answer: D**

**QUESTION 22**

An administrator is using Update Manager 5.x to update virtual appliances in a vSphere environment. The environment is using the vCenter Server Virtual Appliance (vCSA). What would cause the remediation to fail?

- A. Updating of the appliance can only be done if the vCenter Server Virtual Appliance (vCSA)



- has been put into Maintenance Mode.
- B. Remediation must be configured on the Appliance Administration page before use.
  - C. Remediation of the vCenter Server Virtual Appliance (vCSA) with Update Manager is not supported.
  - D. Remediation requires the hosts to be connected to vCenter using an IPv4 address.

**Correct Answer: D**

#### **QUESTION 23**

An administrator is working to update the hosts and virtual machines in a vSphere 5.x deployment using Update Manager Baselines. Other than host patches, which three items require a separate procedure or process to update? (Choose three.)

- A. Operating system patches
- B. Virtual Appliance updates
- C. Virtual Machine Virtual Hardware upgrades
- D. VMware Tools on machines without VMware Tools already installed
- E. Application patches within the virtual machine

**Correct Answer: ADE**

#### **QUESTION 24**

An administrator selects the Profile Compliance tab of an vSphere cluster, then selects Check Compliance Now. Which features requirements are not checked by this?

- A. vMotion
- B. Fault Tolerance
- C. DRS
- D. Host Profiles

**Correct Answer: D**

#### **QUESTION 25**

An administrator is troubleshooting an ESXi 5.x host and needs to export diagnostic information. The host is currently managed by a vCenter Server instance. Which two ways can the information be gathered using the vSphere Client? (Choose two.)

- A. Select Home. Under Administration, click System Logs and click the Export System Logs button. Select the affected ESXi host. Select Select All. Select a location and click Finish.
- B. In the vSphere Client, select the affected ESXi host. Right-click the host and select Export Diagnostic Data. Select a location and click OK.

- C. Log in to the ESXi host locally, Select Export System Logs.
- D. In the vSphere Client, select the affected ESXi host. Select File, Export and Export System Logs. Select Select All. Select a location and click Finish.

**Correct Answer: AD**

#### **QUESTION 26**

An ESXi 5.x host displays a warning icon in the vSphere console and its summary page lists a configuration issue "SSH for the host has been enabled." What are two ways to clear this warning? (Choose two.)

- A. Using the Security Profile pane of the Configuration tab in the vSphere Client
- B. Using the Direct Console User Interface (DCUI)
- C. Using the Advanced Settings pane of the Configuration tab in the vSphere Client
- D. Using the Networking pane of the Configuration tab in the vSphere Client

**Correct Answer: AB**

#### **QUESTION 27**

vCenter reports a connectivity problem with a ESXi 5.x host that is not a member of a cluster. An administrator attempts to connect directly to the host using the vSphere Client but fails with the message "An unknown connection error occurred." Virtual machines running on the host appear to be running and report no problem. What two methods would likely resolve the issue without affecting the virtual machines? (Choose two.)

- A. Enter the service mgmt-vmware restart command from either SSH or local CLI
- B. Select Restart Management Agents in the Direct Console User Interface (DCUI)
- C. Select Reboot Host in the Direct Console User Interface (DCUI)
- D. Enter the services.sh restart command from either SSH or the local CLI

**Correct Answer: BD**

#### **QUESTION 28**

ACME Catering Services is using esxtop to troubleshoot a performance problem with one of their ESXi 5.x hosts. Host disconnections from vCenter Server as well as sluggish performance when performing tasks on the host have been observed. Based on the output in the exhibit, how many vCPU's have been assigned to FileServer01?

```

3:58:20pm up 15:52, 300 worlds, 7 VMs, 14 vCPUs; CPU load average: 1.07, 1.10, 1.09
PCPU USED(%): 94 94 93 93 92 86 90 89 AVG: 91
PCPU UTIL(%): 93 93 93 93 93 87 89 89 AVG: 91
    
```

ID	GID	LWID	NAME	NWLD	%USED	%RUN	%SYS	%WAIT	%VMWAIT	%RDY	%IDLE	%OVRLP	%CSTP	%MLMTD	%SWPWT
30172	30172	40901	dsacjose-vm50	5	0.58	0.52	0.06	497.01	0.15	3.63	96.71	0.01	0.00	0.00	0.00
31109	31109	42222	Dev_App_01	5	60.98	60.30	0.04	395.71	0.00	44.19	0.00	0.08	0.00	0.00	0.00
31112	31112	42228	Dev_SQL_01	5	62.93	63.58	0.02	398.24	0.00	38.52	0.00	0.08	0.00	0.00	0.00
31115	31115	42234	Dev_Web_01	5	67.16	66.76	0.02	395.02	0.00	35.66	0.00	0.10	0.00	0.00	0.00
31275	31275	42457	FileServer01	12	470.63	471.52	0.05	308.00	210.90	113.49	0.00	1.00	9.28	0.00	0.74
31281	31281	42491	jonathanm-SQL20	5	1.83	1.79	0.05	495.49	0.00	3.86	95.39	0.01	0.00	0.00	0.00
31886	31886	43286	victim-001	5	60.60	60.34	0.01	393.30	0.00	46.82	0.00	0.08	0.00	0.00	0.00

- A. 1
- B. 2
- C. 4
- D. 8

**Correct Answer: D**

**QUESTION 29**

An administrator notices that log files kept on an ESXi 5.x host are being rotated very quickly, inhibiting the troubleshooting of an issue. Which two configuration changes will resolve the issue? (Choose two.)

- A. Configure syslog to send the logs a syslog server
- B. Increase the number of logs kept
- C. Increase the logging level
- D. Increase the size of the partition where log files are stored

**Correct Answer: AB**

**QUESTION 30**

A series of Auto Deploy ESXi 5.x hosts which utilize vSphere Standard Switches are unable to boot. In prior testing, all of the hosts were able to boot successfully. Which two conditions might cause this issue? (Choose two.)

- A. The Hosts are unable to connect to the SAN.
- B. The TFTP server is down.
- C. The DNS server is down.
- D. The DHCP server is down.

**Correct Answer: BD**

**QUESTION 31**

An administrator wants to monitor the health status of an ESXi 5.x host. However, when the administrator clicks the Hardware Status tab the following error is displayed. This program cannot display the webpage. What might cause this problem?

- A. The VMware VirtualCenter Management Webservices Service is not started.
- B. The required plug-in is not enabled.
- C. The VMware ESXi Management Webservices Service is not started
- D. The name of the vCenter Server system could not be resolved.

**Correct Answer: A**

**QUESTION 32**

An iSCSI array is being added to a vSphere 5.x implementation. An administrator wants to verify that all IP storage VMkernel interfaces are configured for jumbo frames. What are two methods to verify this configuration? (Choose two.)

- A. Run the `esxcli network ip interface list` command
- B. Run the `esxcfg-vswif -l` command
- C. Ensure that the Enable Jumbo Frames box is checked in the VMkernel interface properties in the vSphere client
- D. Ensure that the MTU size is set correctly in the VMkernel interface properties in the vSphere client

**Correct Answer: AD**

**QUESTION 33**

An administrator has configured a vSphere Distributed Switch to send all network traffic to a collector virtual machine for analysis. However, after checking the collector virtual machine several hours later the administrator finds that no data has been collected. vSphere 5.x has been deployed in the datacenter. Which two items below could be causing this issue? (Choose two.)

- A. The source virtual machine does not have Promiscuous Mode enabled.
- B. The source and target virtual machines are not both be on the same vSphere Distributed Switch.
- C. The port group or distributed does not have Promiscuous Mode enabled.
- D. The port group or distributed port does not have NetFlow enabled.

**Correct Answer: BD**

#### QUESTION 34

A vSphere 5 implementation consists of a fully automated DRS cluster with two ESXi 5.x hosts with the following vSphere Standard Switch configuration.

1. Switch A. three vmnics, one port group named sFTP-PG
2. Switch B. two vmnic, one port group named Web-PG
3. All vmnics are trunked to the same physical switch.

DRS has been configured with an anti-affinity rule for all virtual machines in the Web-PG so that no more than half of the virtual machines run on any given host. The virtual machines on WebPG are experiencing significant network latency. The network team has determined that a performance bottleneck is occurring at the ESXi host level. Which solution will require the least amount of administrative work and the least amount of service interruption?

- A. Migrate Web-PG to Switch A and sFTP-PG to Switch B on each host
- B. Move a vmnic from Switch A to Switch B on each host
- C. Convert the three Switch Bs to a single vSphere Distributed Switch
- D. Use vMotion to redistribute some of the VMs in Web-PG to a different ESXi host

**Correct Answer: B**

#### QUESTION 35

A user attempts a remote SSH connection to a newly-installed ESXi 5.x host to execute some commands. The SSH connection attempt fails, though the user is able to receive a ICMP ping back from the host. What must the administrator do to enable SSH? (Choose two.)

- A. Enable root logon on the ESXi server.
- B. Open the SSH port on the ESXi firewall.
- C. Start the SSH service on the ESXi server.
- D. Create a local user on the ESXi server.

**Correct Answer: CD**

#### QUESTION 36

An administrator is setting up vMotion in a vSphere environment. A migration is run to test the configuration, but fails. What could the administrator do to resolve the issue?

- A. Ensure the VMkernel port group is configured for Management Traffic.
- B. Enable VMkernel port group for the vSphere cluster.
- C. Ensure the vMotion enabled adaptors configured for the same subnet.
- D. Use a vDS instead of a standard switch.

**Correct Answer: C**

**QUESTION 37**

An administrator is unable to connect a vSphere Client to an ESXi 5.x host. Which option can be selected from the direct console to restore connectivity without disrupting running virtual machines?

- A. Restore the Standard Switch from the ESXi host.
- B. Restart the Management Agents from the vSphere client.
- C. Restart the Management Agent from the ESXi host.
- D. Disable the Management Network from the vSphere client.

**Correct Answer: C**

**QUESTION 38**

An administrator receives a complaint that a virtual machine is performing poorly. The user attributes the issue to poor storage performance. If the storage array is the bottleneck, which two counters would be higher than normal? (Choose two.)

- A. Average ESXi VMKernel latency per command, in milliseconds
- B. Average ESXi highest latency, in milliseconds
- C. Average virtual machine operating system latency per command, in milliseconds
- D. Number of SCSI reservation conflicts per second

**Correct Answer: BC**

**QUESTION 39**

An administrator must decommission a datastore. Before unmounting the datastore, which three requirements must be fulfilled? (Choose three.)

- A. No virtual machines reside on the datastore.
- B. The datastore is not used for vSphere HA heartbeat.
- C. No registered virtual machines reside on the datastore.
- D. The datastore must not have any extents.
- E. The datastore must not be part of a datastore cluster.

**Correct Answer: ABE**

**QUESTION 40**

An administrator is informed that there will be a storage maintenance window and that failovers may occur. What is the expected length of time that a Windows 2008 virtual machine storage I/O will pause during a path failover?

- A. 0 to 30 seconds
- B. 90 to 120 seconds
- C. 60 to 90 seconds
- D. 30 to 60 seconds

**Correct Answer: D**

## EnsurePass.com Members Features:

1. Verified Answers researched by industry experts.
2. Q&As are downloadable in PDF and VCE format.
3. 98% success Guarantee and **Money Back** Guarantee.
4. Free updates for **180** Days.
5. **Instant Access to download the Items**

View list of All Exam provided:

<http://www.ensurepass.com/certifications?index=A>

To purchase Lifetime Full Access Membership click here:

<http://www.ensurepass.com/user/register>

**Valid Discount Code for 2015: JREH-G1A8-XHC6**

To purchase the HOT Exams:

<u>Cisco</u>		<u>CompTIA</u>		<u>Oracle</u>	<u>VMWare</u>	<u>IBM</u>
<a href="#"><u>100-101</u></a>	<a href="#"><u>640-554</u></a>	<a href="#"><u>220-801</u></a>	<a href="#"><u>LX0-101</u></a>	<a href="#"><u>1Z0-051</u></a>	<a href="#"><u>VCAD510</u></a>	<a href="#"><u>C2170-011</u></a>
<a href="#"><u>200-120</u></a>	<a href="#"><u>200-101</u></a>	<a href="#"><u>220-802</u></a>	<a href="#"><u>N10-005</u></a>	<a href="#"><u>1Z0-052</u></a>	<a href="#"><u>VCP510</u></a>	<a href="#"><u>C2180-319</u></a>
<a href="#"><u>300-206</u></a>	<a href="#"><u>640-911</u></a>	<a href="#"><u>BR0-002</u></a>	<a href="#"><u>SG0-001</u></a>	<a href="#"><u>1Z0-053</u></a>	<a href="#"><u>VCP550</u></a>	<a href="#"><u>C4030-670</u></a>
<a href="#"><u>300-207</u></a>	<a href="#"><u>640-916</u></a>	<a href="#"><u>CAS-001</u></a>	<a href="#"><u>SG1-001</u></a>	<a href="#"><u>1Z0-060</u></a>	<a href="#"><u>VCAC510</u></a>	<a href="#"><u>C4040-221</u></a>
<a href="#"><u>300-208</u></a>	<a href="#"><u>640-864</u></a>	<a href="#"><u>CLO-001</u></a>	<a href="#"><u>SK0-003</u></a>	<a href="#"><u>1Z0-474</u></a>	<a href="#"><u>VCP5-DCV</u></a>	<a href="#"><u>RedHat</u></a>
<a href="#"><u>350-018</u></a>	<a href="#"><u>642-467</u></a>	<a href="#"><u>ISS-001</u></a>	<a href="#"><u>SY0-301</u></a>	<a href="#"><u>1Z0-482</u></a>	<a href="#"><u>VCP510PSE</u></a>	<a href="#"><u>EX200</u></a>
<a href="#"><u>352-001</u></a>	<a href="#"><u>642-813</u></a>	<a href="#"><u>JK0-010</u></a>	<a href="#"><u>SY0-401</u></a>	<a href="#"><u>1Z0-485</u></a>		<a href="#"><u>EX300</u></a>
<a href="#"><u>400-101</u></a>	<a href="#"><u>642-832</u></a>	<a href="#"><u>JK0-801</u></a>	<a href="#"><u>PK0-003</u></a>	<a href="#"><u>1Z0-580</u></a>		
<a href="#"><u>640-461</u></a>	<a href="#"><u>642-902</u></a>			<a href="#"><u>1Z0-820</u></a>		

