



VMware

Exam VCI550

VMware Certified Instructor on vSphere 5

Version: 7.2

[Total Questions: 270]

Topic 1, Plan, Install, Configure and Upgrade vCenter Server and VMware ESXi

Question No : 1 - (Topic 1)

An administrator is planning a vSphere infrastructure with the following specific networking requirements:

- The ability to shape inbound (RX) traffic
- Support for Private VLANs (PVLANS)
- Support for LLDP (Link Layer Discovery Protocol)

What is the minimum vSphere Edition that will support these requirements?

- A. vSphere Essentials Plus
- B. vSphere Standard
- C. vSphere Enterprise
- D. vSphere Enterprise Plus

Answer: D

Question No : 2 - (Topic 1)

What two IT infrastructure components are virtualized by vSphere Essentials? (Choose two.)

- A. Networks
- B. Applications
- C. Storage
- D. Management

Answer: A,C

Question No : 3 - (Topic 1)

An administrator attempts to install vCenter Single Sign-On Server. The installer returns an error message indicating that the installation failed. Prior to the installation, all setup prerequisites were met. The administrator has generated a vCenter Server Single Sign-On

support bundle.

Which two files should the administrator analyze to determine the cause of the failure?
(Choose two.)

- A. Server\utils\logs\imsTrace.log
- B. Server\utils\logs\install.txt
- C. %TEMP%\utils\logs\vminst.log
- D. %TEMP%\vminst.log

Answer: A,D

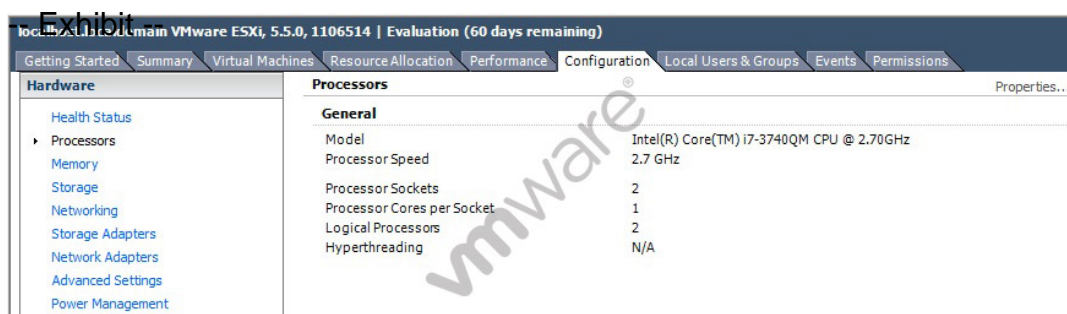
Question No : 4 - (Topic 1)

Which Single Sign-On deployment mode should an administrator use for two 5.x vCenter Servers configured with linked mode?

- A. Basic Single Sign-On with vCenter Server Heartbeat
- B. Multisite Single Sign-On
- C. Basic Single Sign-On
- D. Single Sign-On with Linked Mode

Answer: B

Question No : 5 - (Topic 1)



-- Exhibit --

Which two statements below could explain why the vSphere Client is reporting N/A for hyperthreading? (Choose two.)

- A. The physical CPUs in the host do not support hyperthreading.
- B. Hyperthreading is disabled in the host's BIOS.
- C. The physical CPUs in the host are not multi-core.
- D. The number of CPUs meets or exceeds the maximum without hyperthreading.

Answer: A,B

Question No : 6 - (Topic 1)

An administrator is upgrading a vSphere Distributed Switch. The existing switch is version 5.0 and the administrator wants to upgrade to the latest version possible. The environment contains several ESXi 5.1 hosts.

Which two options are available to ensure that the upgraded switch will be compatible with these hosts? (Choose two.)

- A. Upgrade the vSphere Distributed Switch to 5.5
- B. Upgrade the ESXi 5.1 hosts to version 5.5, then upgrade the vSphere Distributed Switch to 5.5
- C. Upgrade the vSphere Distributed Switch to 5.1
- D. Upgrade the ESXi host switches to 5.5, then upgrade the vSphere Distributed Switch to 5.5

Answer: B,C

Question No : 7 - (Topic 1)

Which two Identity Sources are available to add for vCenter Single Sign-On authentication? (Choose two.)

- A. LocalOS
- B. OpenLDAP
- C. NIS as an LDAP Server
- D. VCMSDS

Answer: A,B

Question No : 8 - (Topic 1)

A small company wants to use VMware products for its production systems. The system administrator needs to recommend a solution that will deliver High Availability to the company's production applications.

What is minimum vSphere offering that will support this requirement?

- A. vSphere Essentials
- B. vSphere Essentials Plus
- C. vSphere Hypervisor
- D. vSphere Standard

Answer: B

Question No : 9 - (Topic 1)

A developer needs to create a multi-tier development stack for a home lab.

Which vSphere product will support the architecture required for the least software cost?

- A. vSphere Hypervisor
- B. vSphere Essentials
- C. VMware Player
- D. VMware Workstation

Answer: A

Question No : 10 - (Topic 1)

An administrator is unable to login to vCenter Server when using the vSphere web client. The administrator successfully accessed vCenter Server using the client earlier the same day.

What is the most appropriate first step the administrator should take to resolve this issue?

- A. Verify the web browser being used has Adobe Flash plugin version 11.5 or later
- B. Verify the vCenter Single Sign-On service is running on the vCenter Server
- C. Verify the vSphere Web Server service is running on the vCenter Server
- D. Verify the administrator has permissions configured in vCenter Server

Answer: B

Question No : 11 - (Topic 1)

What is a valid plug-in status for a plug-in that has been added to a vSphere client?

- A. Disabled
- B. Unknown
- C. Stopped
- D. Installed

Answer: A

Question No : 12 - (Topic 1)

An administrator is evaluating whether to deploy vCenter Server on a Windows server or on a vCenter Server appliance. The administrator has the following requirements:

- A web browser will be utilized to manage the vSphere environment.
- 16 ESXi hosts will be deployed.
- Licenses must be shared with a vCenter Server at another site.
- An external Oracle 10g database server will be used to host the vCenter Server database.

Why will the administrator need to deploy vCenter Server on a Windows server?

- A. Linked Mode is a requirement for the solution.
- B. Oracle 10g is a requirement for the solution.
- C. The vSphere web client is a requirement for the solution.
- D. Management of more than 5 hosts is a requirement for the solution.

Answer: A

Question No : 13 - (Topic 1)

Immediately after installing ESXi, an administrator observes that the Configure Lockdown Mode option is grayed out in the Direct Console User Interface (DCUI).

What is the most likely explanation?

- A. The host has not yet been added to a vCenter Server.
- B. The BIOS on the host does not have NX/XD enabled.
- C. The ESXi host is running in evaluation mode.
- D. The host requires a reboot before this feature is available.

Answer: A

Question No : 14 - (Topic 1)

During the installation of ESXi 5.5, the following error message is reported:

Hardware Virtualization is not a feature of the CPU, or is not enabled in the BIOS.

Which condition would generate this message?

- A. LAHF/SAHF is not enabled in the BIOS.
- B. NX/XD is not enabled in the BIOS.
- C. SSE3 is not enabled in the BIOS.
- D. Hyperthreading is not enabled in the BIOS.

Answer: A

Question No : 15 - (Topic 1)

During an upgrade, the ESXi 5.x installer finds an existing version of ESXi and a VMFS3 volume. No virtual machines exist on the host or VMFS3 volume. The requirement is to upgrade to VMFS5.

Which option should be chosen to meet this requirement?

- A. Upgrade ESXi and preserve the VMFS datastore
- B. Install ESXi and preserve the VMFS datastore
- C. Install ESXi and overwrite the VMFS datastore
- D. Upgrade ESXi and overwrite the VMFS datastore

Answer: C

Question No : 16 - (Topic 1)

What happens to the status of users already logged into ESXi Shell when a vSphere administrator enables lockdown mode?

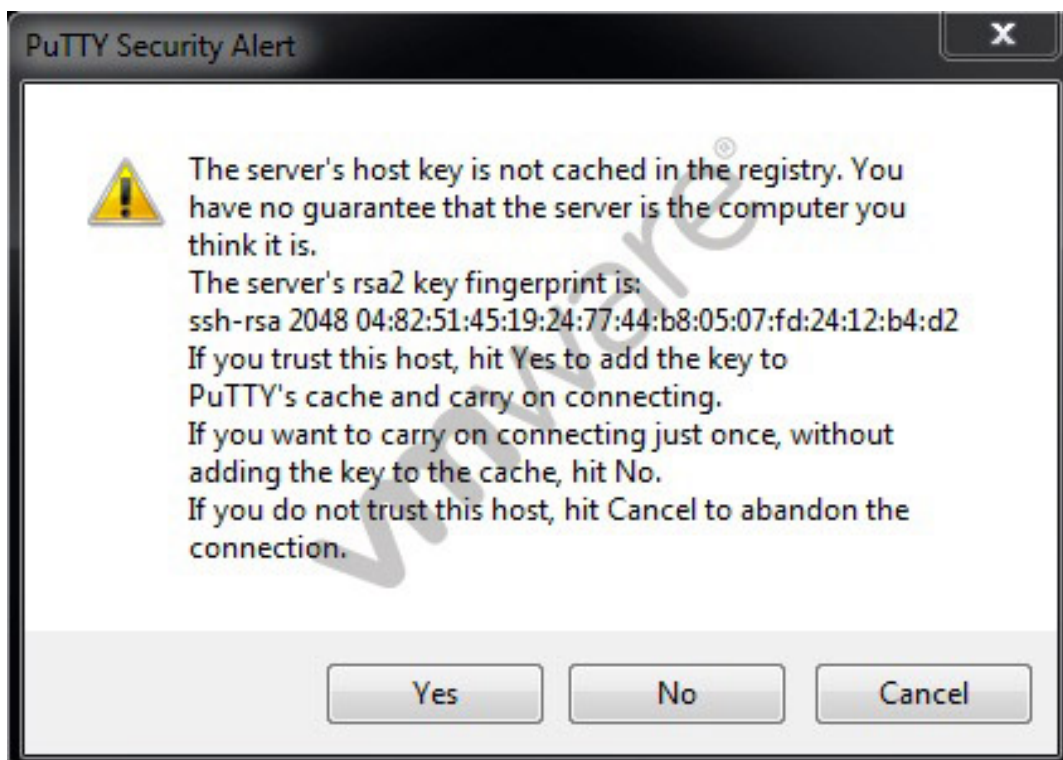
- A. Users remain logged in and can run commands, except to disable lockdown mode.
- B. Users remain logged in and can run commands, including disabling lockdown mode.
- C. Users are immediately logged out of ESXi Shell.
- D. Users are logged out after a timeout specified by the vSphere administrator.

Answer: A

Question No : 17 - (Topic 1)

The vSphere administrator attempts to connect to an ESXi host via an SSH client and receives the following security alert:

-- Exhibit --



-- Exhibit --

The vSphere administrator needs to determine whether the RSA key fingerprint shown in the security alert is the fingerprint of the intended ESXi host.

Which tool should the vSphere administrator use?

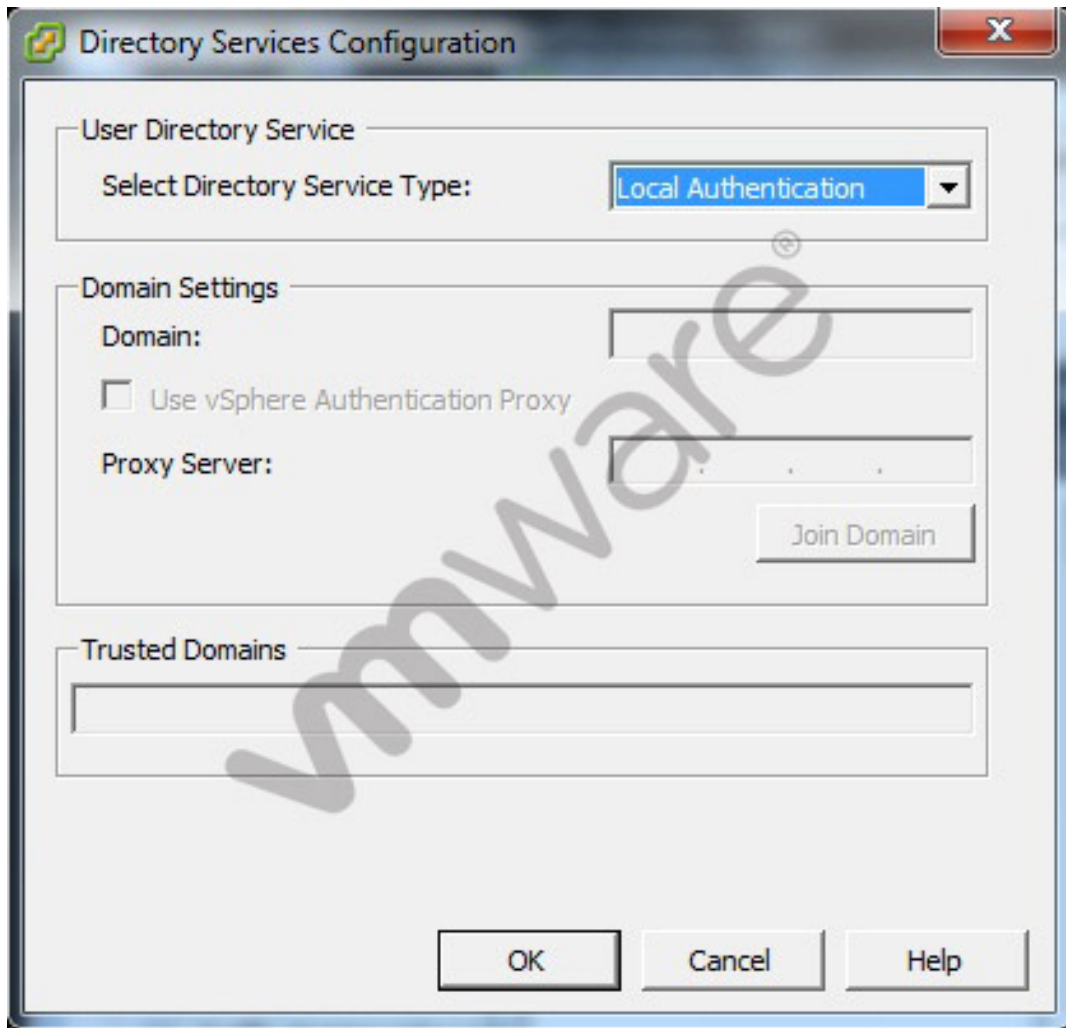
- A. Direct Console User Interface
- B. vSphere Client
- C. vSphere Web Client
- D. vSphere Management Assistant

Answer: A

Question No : 18 - (Topic 1)

The vSphere administrator is configuring directory services for an ESXi host:

-- Exhibit --



-- Exhibit --

What should the vSphere administrator do to configure the host to use CAM services?

- A. Check the Use vSphere Authentication Proxy checkbox.
- B. Set Select Directory Service Type to CAM services.
- C. Specify CAM\$ for the Domain.
- D. Set Trusted Domains to cam\name.tld where name.tld is the domain that the host is joining.

Answer: A

Question No : 19 - (Topic 1)

An administrator creates an ESXi cluster using vSphere Auto Deploy. The ESXi hosts are configured to get a management IP address from a DHCP server. The administrator needs

to troubleshoot the management network on one of the hosts. Which DCUI option should the administrator use to renew the DHCP lease?

- A. Restart Management Network
- B. Restore Network Settings
- C. Test Management Network
- D. Configure Management Network

Answer: A

Question No : 20 - (Topic 1)

An administrator creates an ESXi cluster using vSphere Auto Deploy. The ESXi hosts are configured to get a management IP address from a DHCP server. The administrator needs to troubleshoot the management network on one of the hosts. Which DCUI option should the administrator use to renew the DHCP lease?

- A. Restart Management Network
- B. Restore Network Settings
- C. Test Management Network
- D. Configure Management Network

Answer: A

Question No : 21 - (Topic 1)

To comply with security requirements, an administrator with a vCenter Server Appliance needs to force logoff of the vSphere web client after 10 minutes of inactivity.

What should the administrator do to meet the requirement?

- A. Edit: /var/lib/vmware/vsphere-client/webclient.properties, modify session.timeout=10
- B. Edit: /opt/vmware/vsphere-client/webclient.properties, modify session.timeout=600
- C. Edit: /var/lib/vmware/vsphere-client/webclient.properties modify session.timeout=600
- D. Edit: /opt/vmware/vsphere-client/webclient.properties, modify session.timeout=10

Answer: A

Question No : 22 - (Topic 1)

As part of a multisite Single Sign-On (SSO) deployment what two steps are required to ensure that a change to one Single Sign-On instance is propagated to the other instances? (Choose two.)

- A. Schedule a Replication Task on the primary instance
- B. Select the first instance during the installation of subsequent instances
- C. During the installation of each instance choose Linked-Mode
- D. Enable Synchronize to Active Directory on each instance

Answer: A,C

Question No : 23 - (Topic 1)

Which statement is true regarding the licensing of vCenter Server?

- A. The license for vCenter Server must be provided at the time of installation.
- B. Changing the license assigned to vCenter Server requires a restart of the vCenter Server service.
- C. Virtual machines can still be powered on if the vCenter Server license expires.
- D. Licensing for a single vCenter Server installation is determined by the number of managed virtual machines.

Answer: C

Question No : 24 - (Topic 1)

A vSphere administrator has been using vSphere in evaluation mode and now wants to deploy an environment that provides the same features.

Which edition of vSphere provides similar functionality to evaluation mode?

- A. Enterprise Plus
- B. Enterprise
- C. Standard
- D. Essentials

Answer: A

Question No : 25 - (Topic 1)

An administrator is re-provisioning an ESXi host and moving it to another datacenter.

Which DCUI option should the administrator use to revert the system configuration to the default settings?

- A. Reset System Configuration
- B. Rebuild Default System Configuration
- C. Revert System Configuration
- D. Renew Default System Configuration

Answer: A

Question No : 26 - (Topic 1)

An administrator is preparing to install an additional Single Sign-On node on a stand-alone server.

What information is required during the installation routine?

- A. Active Directory domain name and credentials
- B. System DSN
- C. Partner Host Name
- D. Lookup Service URL

Answer: C

Question No : 27 - (Topic 1)

Which Web service is installed during the vCenter Server installation?

- A. Internet Information Service (IIS)
- B. WEBrick
- C. Tomcat Web server

D. LiteSpeed Web server

Answer: C

Question No : 28 - (Topic 1)

A large aerospace company utilizes a mission critical application requiring a large database server with 16 vCPUs and 500GB of RAM. Because of the critical nature of the application, the company also wants to leverage Reliable Memory Technology.

What is the minimum edition of vSphere that will support this scenario?

- A. vSphere Standard Edition
- B. vSphere with Operations Management Standard Edition
- C. vSphere Enterprise Edition
- D. vSphere with Operations Management Enterprise Edition

Answer: C

Question No : 29 - (Topic 1)

A large medical institution needs to centralize malware and anti-virus scanning in its environment.

Which vSphere component will satisfy this requirement?

- A. vShield Endpoint
- B. vCloud Network and Security
- C. vSphere Data Protection Advanced
- D. vCenter Operations Manager

Answer: A

Question No : 30 - (Topic 1)

An administrator is setting up a new vSphere environment for application development with health monitoring and capacity management. The administrator has purchased three

servers for the initial install. The administrator is NOT planning to grow the environment and needs to keep costs as low as possible.

Which vSphere kit should the administrator use to meet these requirements?

- A. vSphere Essentials Kit
- B. vSphere Essentials Plus Kit
- C. vSphere with Operations Management Standard Acceleration Kit
- D. vSphere with Operations Management Enterprise Acceleration Kit

Answer: C

Question No : 31 - (Topic 1)

What is the correct order to install vCenter Server 5.x components?

- A. vCenter Single Sign-On, Inventory Service, vCenter Server
- B. vCenter Server, vCenter Single Sign-On, Inventory Service
- C. vCenter Server, Inventory Service, vCenter Single Sign-On
- D. vCenter Single Sign-On, vCenter Server, Inventory Service

Answer: A

Question No : 32 - (Topic 1)

An administrator needs to continue using ESXi after the 60-day evaluation period expires. The administrator has obtained a valid license from VMware.

Which step must the administrator take to deploy the license?

- A. Add the license to the ESXi host
- B. Perform an in-place upgrade of the free vSphere Hypervisor to the paid version
- C. Add the ESXi host to a licensed vCenter Server
- D. Re-install the host with standard ESXi and the obtained license

Answer: A

Question No : 33 - (Topic 1)

How should a vSphere administrator disable memory compression?

- A. Attach a vSphere Client to an ESXi host and edit the Mem.MemZipEnable advanced setting.
- B. Connect to vCenter Server using the vSphere Client and edit the virtual machine. Insert the Mem.MemZipDisable option and set the value to True.
- C. Connect a vSphere Client to vCenter Server and configure the Memory Compression setting from the Administration menu.
- D. Reboot the ESXi host and disable memory compression in the BIOS under Advanced Settings.

Answer: A

Question No : 34 - (Topic 1)

Which installation method is not available for a new deployment of ESXi 5.x?

- A. Update Manager installation
- B. Text-based interactive installation
- C. Scripted installation
- D. Auto Deploy installation

Answer: A

Question No : 35 - (Topic 1)

The oncall system administrator has made a change on the ESXi host requiring a restart of the management network. Lockdown mode is enabled.

Which action should the administrator take to restart the management network?

- A. Use the vSphere client to enable local authentication services, then logon directly to the ESXi Shell and run services mgmt-vmware restart.
- B. Use an SSH client to logon to the command line and run services mgmt-vmware restart.
- C. Use the vSphere client to enable the DCUI and then logon to the ESXi Shell and use the menu to restart the management network.
- D. Logon directly to the DCUI and use the menu to restart the management network.

Answer: D

Question No : 36 - (Topic 1)

An administrator is attempting to use Update Manager to patch a cluster of ESXi 5.x hosts.

The administrator needs to stage the patches for a scheduled update after hours. When verifying the hosts after the scheduled upgrade, the administrator determines that one of the hosts was not remediated and patches are not staged. The host is using PXE as its boot method.

What condition would cause this behavior?

- A. The host was rebooted prior to the scheduled remediation.
- B. Remediating PXE-booted hosts using Update Manager is unsupported.
- C. The user account used does NOT have the Remediate Hosts privilege.
- D. The RAMdisk on the host has insufficient capacity.

Answer: A

Question No : 37 - (Topic 1)

What are three reasons for deploying vCenter Server in a physical machine? (Choose three.)

- A. vCenter Server can be deployed as physical machine to support a VSA configuration.
- B. vCenter Server can be deployed as a physical machine to ensure it is not susceptible to vSphere outages.
- C. vCenter Server can be deployed as a physical machine to improve VMware Data Recovery performance.
- D. vCenter Server can be deployed as a physical machine to improve vMotion performance.
- E. vCenter Server can be deployed as a physical machine to ensure it does not contend for resources.

Answer: A,B,E

Explanation:

VCenter server can be deployed as a physical machine so that VSA configuration can be supported and ensures it is not susceptible to vsphere outages. It can also be deployed as physical machine to make sure it does not content for virtual resources.

Question No : 38 - (Topic 1)

Which two vCenter plug-ins are installed with a default vSphere Client installation?
(Choose two.)

- A. vCenter Hardware Status
- B. VMware ESXi Service Status
- C. VMware vSphere Update Manager
- D. VMware vCenter Storage Monitoring Service

Answer: A,D

Reference: <http://pubs.vmware.com/vsphere-51/topic/com.vmware.ICbase/PDF/vsphere-esxi-vcenter-server-51-host-management-guide.pdf> (page 19, first para)

Topic 2, Plan and Configure vSphere Networking

Question No : 39 - (Topic 2)

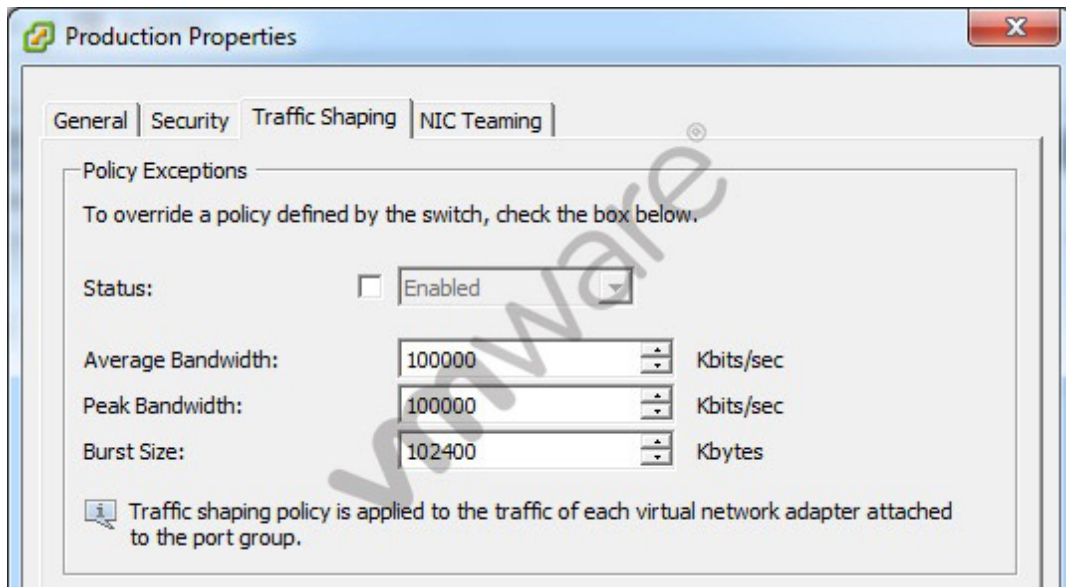
Which VLAN configuration requires switch connectivity defined as an access port?

- A. Private VLAN
- B. External Switch Tagging
- C. Virtual Guest Tagging
- D. Virtual Switch Tagging

Answer: B

Question No : 40 - (Topic 2)

-- Exhibit --



-- Exhibit --

An administrator determines that traffic shaping does not appear to be working on Production, a virtual machine port group on vSwitch1. Traffic shaping is working on all other port groups on the switch.

The administrator examines the Traffic Shaping settings as shown in the exhibit:

What should the administrator do to resolve the problem?

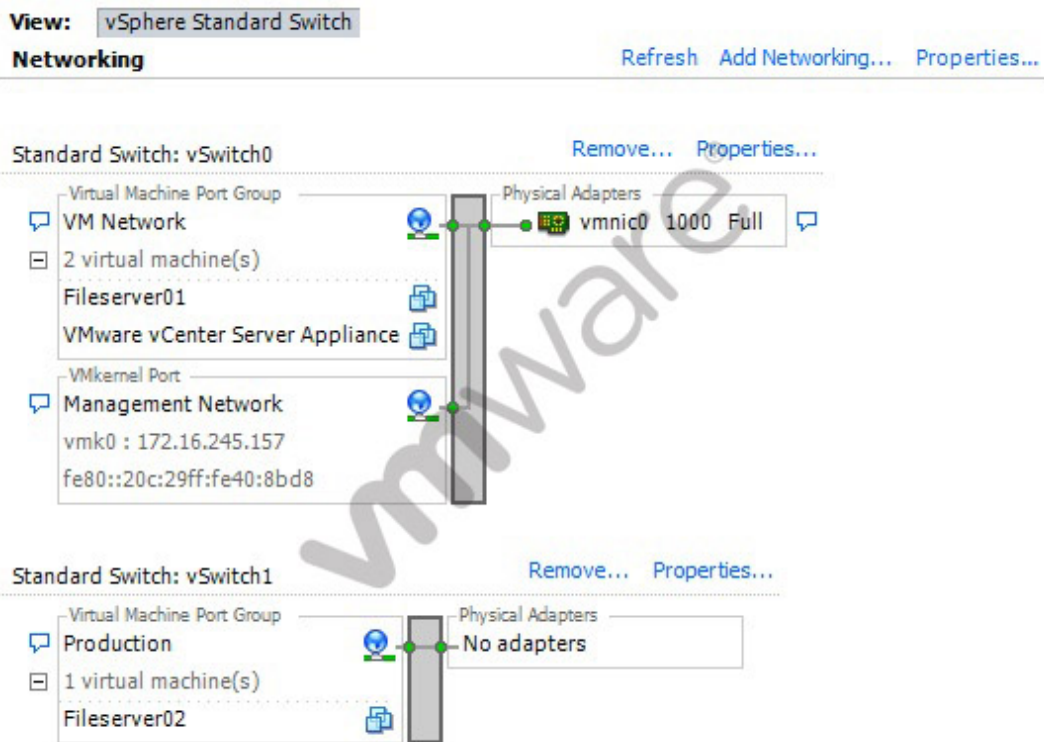
- A. Select the Status checkbox to enable Traffic Shaping on the portgroup.
- B. Reduce the Average Bandwidth to 50% of the Peak Bandwidth.
- C. Reduce the Burst Size to 50% of the Peak Bandwidth.
- D. Click the Security tab and create the necessary security exception.

Answer: A

Question No : 41 - (Topic 2)

-- Exhibit --

Dumps with PDF and VCE (+Free VCE Software)



-- Exhibit --

The vSphere administrator needs to remove the Production virtual machine port group from an ESXi host. The ESXi host's Networking Configuration tab is shown in the exhibit.

After disconnecting the Fileserver02 VM, what step does the administrator need to take, assuming that vSwitch1 will still be needed for further configuration?

- A. Remove the Production port group by accessing the properties for the port group.
- B. Remove the Production port group by accessing the properties for vSwitch1.
- C. Remove the Production port group by accessing the properties for the Network.
- D. Remove the Production port group by removing vSwitch1.

Answer: B

Question No : 42 - (Topic 2)

A vSphere Standard Switch is configured with two uplinks.

When adjusting the failover order of the uplinks, what are two valid states in which an administrator can place the uplinks? (Choose two.)

- A. Active
- B. Unused
- C. Passive
- D. Disabled

Answer: A,B

Question No : 43 - (Topic 2)

An administrator determines that a vSphere Standard Switch is dropping all inbound frames to a specific virtual machine. The behavior appeared in the last two days. Which configuration setting, if changed during this timeframe, would result in this behavior?

- A. MAC address changes
- B. Forged Transmit
- C. Traffic Shaping
- D. Jumbo Frames

Answer: A

Question No : 44 - (Topic 2)

Which two network settings are available on a vSphere Standard Switch? (Choose two.)

- A. Ingress traffic shaping
- B. Egress traffic shaping
- C. Private Virtual Local Area Networks (PVLAN)
- D. Virtual Local Area Networks (VLAN)

Answer: B,D

Question No : 45 - (Topic 2)

A security team is validating policy settings in a vSphere environment.

By default, which security policy is set to reject on a vSphere Standard Switch?

- A. Promiscuous mode
- B. MAC address changes
- C. Forged transmit
- D. Use explicit failover

Answer: A

Question No : 46 - (Topic 2)

A vSphere administrator upgrades a version 5.1.0 vSphere Distributed Switch to version 5.5.0. Another vSphere administrator, unaware of this change, tries to add an ESXi version 5.1.0 host to the switch and fails.

What is causing this addition of the ESXi host to fail?

- A. The upgraded switch supports version 5.5 ESXi hosts only.
- B. The upgraded switch must be set up for backwards compatibility.
- C. The switch failed to upgrade properly.
- D. A version 5.5 ESXi host must be added to the switch before the 5.1 host.

Answer: A

Question No : 47 - (Topic 2)

A vSphere administrator creates a new vSphere Distributed Switch. The administrator receives notice from the service desk that a cluster of vSphere hosts has disconnected from vCenter Server. This disconnect occurred immediately after the new switch was created.

- This vSphere Distributed Switch is the only distributed switch managed by vCenter.
- The virtual machines are still functional and the applications are still accessible by end users.

On the ESXi hosts, which step must the vSphere administrator take to allow vCenter Server to reconnect?

- A. Use the Direct Console User Interface to reattach the management vmnic to the appropriate switch
- B. Use the Direct Console User Interface to disable lockdown mode on each affected host

- C. Use the ESXi Shell to restart the mgmt-vmware service on each affected host
- D. Use the ESXi Shell to restart the vSphere Web Client service on each affected host

Answer: A

Question No : 48 - (Topic 2)

A vSphere administrator is administering a vSphere Distributed Switch port group using the vSphere Web Client. The port group was configured using Static binding, but the number of ports must increase as virtual machines are added to the port group.

Which port allocation setting should the administrator use to achieve this goal?

- A. Elastic
- B. Dynamic
- C. Fixed
- D. Manual

Answer: A

Question No : 49 - (Topic 2)

An administrator is deploying vSphere 5.5. The administrator creates a vSphere Distributed Switch, then uses Auto Deploy to deploy several ESXi hosts. After the hosts are deployed, the administrator notices that LACP packets are not being sent between them.

Which condition would cause this issue to occur?

- A. The LACP support settings do not exist in the Host Profile.
- B. The LACP installation bundle is not included in the Image Profile.
- C. The LACP setting is not enabled on vCenter Server.
- D. LACP has not been configured on the Auto Deploy server.

Answer: A

Question No : 50 - (Topic 2)

A virtual machine is receiving a large number of network packets, which is affecting the

performance of other virtual machines connected to the same virtual network.

What should the vSphere administrator do to resolve the issue?

- A. Migrate the virtual machine to a standard switch that has been configured for ingress traffic shaping
- B. Configure the distributed switch to which the virtual machine is connected for ingress traffic shaping
- C. Migrate the virtual machine to a different port group on the same distributed switch
- D. Enable Network I/O Control on the standard switch to which the virtual machine is connected

Answer: B

Question No : 51 - (Topic 2)

A system administrator has an application installed on a physical machine that is licensed to the MAC address of the physical NIC. This system needs to be virtualized.

What two methods could an administrator use to ensure the license will function in the virtual machine? (Choose two.)

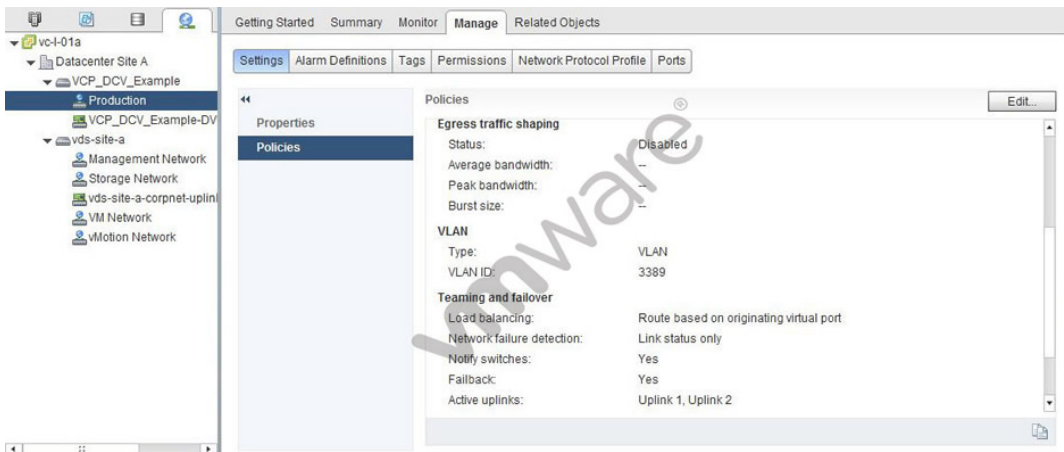
- A. Manually set the MAC address for the vNIC in the guest OS
- B. Install the NIC from the physical server into the ESXi host
- C. Manually set the MAC address for the vNIC using the Web Client
- D. Configure the physical server's MAC address in the virtual switch

Answer: A,C

Question No : 52 - (Topic 2)

-- Exhibit --

Dumps with PDF and VCE (+Free VCE Software)



-- Exhibit --

A vSphere administrator assigns VLAN 3389 to the Production port group on the VCP_DCV_Example vSphere Distributed Switch. After the change, users report a loss of connectivity to their applications. Further analysis provides the following data:

- The cluster has not had a ESXi host failure.
- Application functioned normally prior to the change.
- The loss of connectivity occurred immediately following the change.

Which condition would cause this loss of connectivity?

- A.** The physical switch ports used by the vmnics have not been configured with 802.1Q.
- B.** Maintenance Mode was initiated on one of the hosts in the cluster. Connectivity will resume after the virtual machines are migrated.
- C.** All uplinks were removed from the VCP_DCV_Example switch and added to another virtual switch.
- D.** A load balancing setting on the port group conflicts with the load balancing setting of the switch.

Answer: A

Question No : 53 - (Topic 2)

Why would an administrator be unable to locate an IP address for a vSphere vmnic uplink?

- A.** IP addresses are defined at the virtual nic level, not the vmnic level.
- B.** ESXi host vmnics communicate with physical switches on layer 3.

- C. ESXi hosts use NAT translation to mask the actual vmnic IP address.
- D. The IP address of the vmnic is not shown in the vSphere Client.

Answer: A

Question No : 54 - (Topic 2)

A network auditing team has observed activity from a virtual machine that may be an organization policy security breach. The vSphere administrator needs to stop network traffic from the virtual machine.

Which step should the administrator take?

- A. Enable Port Blocking on the vSphere Standard Switches in the organization and block the port on which the virtual machine is connected.
- B. Enable Port Blocking on each vSphere Standard Switch portgroup in the organization, then block the port on which the virtual machine is connected.
- C. Enable Port Blocking on each vSphere Distributed Switch portgroup in the organization, then block the port on which the virtual machine is connected.
- D. Enable Port Blocking on the vSphere Distributed Switches in the organization and block the port on which the virtual machine is connected.

Answer: C

Question No : 55 - (Topic 2)

An application administrator reports application slowness when loading the application's web portal. The virtual machine is currently connected to a vSphere Distributed Switch. The application owner requests information about the virtual machine's network traffic.

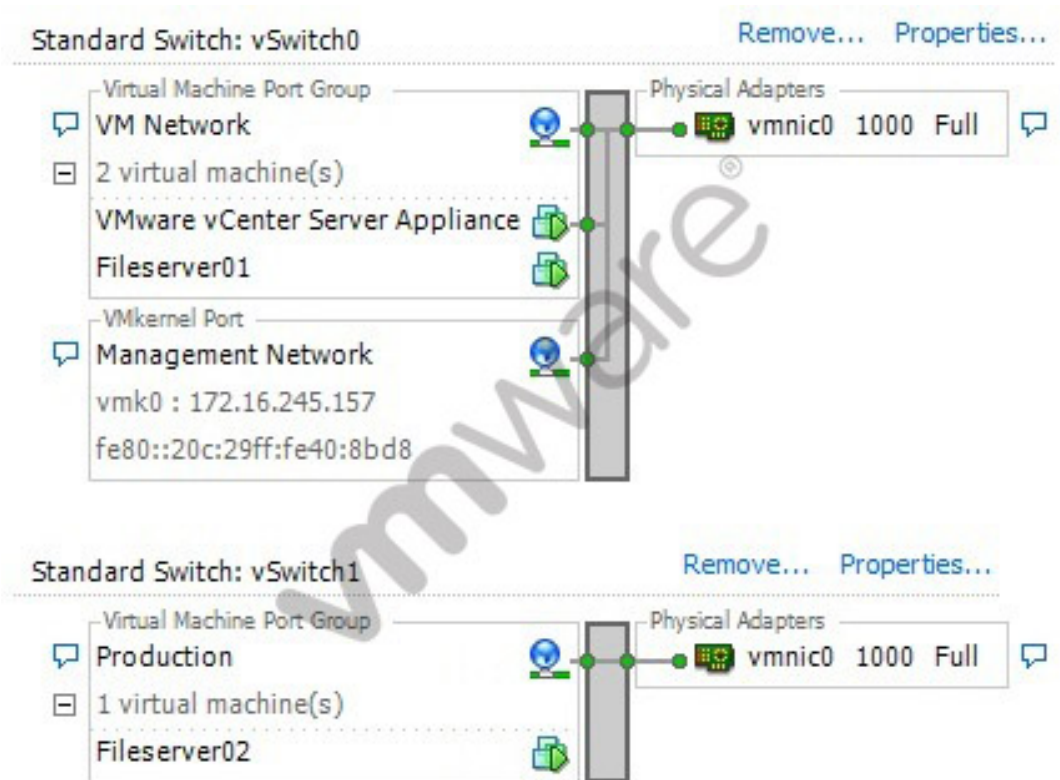
Which feature of a vSphere Distributed Switch should the administrator use to gather the needed information?

- A. NetFlow
- B. Port Mirroring
- C. Network I/O Control
- D. Promiscuous Mode

Answer: A

Question No : 56 - (Topic 2)

-- Exhibit --



-- Exhibit --

Why is the network configuration shown in the exhibit impossible?

- A. A single vmnic cannot be shared by two virtual switches.
- B. The MAC address of the Management Network VMkernel port is invalid.
- C. Virtual machines are not allowed to run on the same virtual machine port group as the vCenter Server Virtual Appliance.
- D. Virtual Machine Port Groups and VMkernel Ports are not allowed on the same virtual switch.

Answer: A

Question No : 57 - (Topic 2)

-- Exhibit --

The screenshot shows the VMware network adapter configuration interface. It is divided into several sections: 'Device Status' with 'Connect at power on' checked; 'Adapter Type' showing 'E1000'; 'MAC Address' with 'Automatic' selected; 'DirectPath I/O' showing 'Not supported'; and 'Network Connection' with 'Production' selected in a dropdown menu.

-- Exhibit --

An administrator is unable to configure Receive Side Scaling on the vmnic driver in a Windows 2008 R2 guest.

Based on the exhibit, what would need to be modified to enable this option?

- A. Manually configure a static MAC address
- B. Enable DirectPath I/O
- C. Ensure the vmnic is attached to the correct network
- D. Change the adapter type to VMXNET3

Answer: D

Question No : 58 - (Topic 2)

The Edit Settings wizard reports a virtual machine is configured as follows:

-- Exhibit --

The screenshot shows a configuration window for a network adapter. It is divided into several sections: 'Device Status' with 'Connect at power on' checked; 'Adapter Type' showing 'E1000'; 'MAC Address' with 'Automatic' selected; 'DirectPath I/O' showing 'Not supported'; and 'Network Connection' with an empty 'Network label' dropdown menu.

-- Exhibit --

Which setting, if NOT configured, will prevent network connectivity?

- A. The network label must be supplied.
- B. The MAC address must be supplied.
- C. The device status must be set to Connected.
- D. The DirectPath I/O status must be Supported.

Answer: A

Question No : 59 - (Topic 2)

A vSphere administrator has created a vSphere Standard Switch with one virtual machine port group and one physical uplink. The administrator needs to ensure that the virtual machines on this port group can communicate only with each other.

What should the administrator do?

- A. Remove the physical uplink from the vSphere Standard Switch

- B. Create a Private VLAN and apply it to the virtual machine port group on the vSphere Standard Switch
- C. Enable Port Security on the vSphere Standard Switch
- D. Enable the Fenced setting on the virtual machine port group

Answer: A

Question No : 60 - (Topic 2)

A vSphere administrator needs to add redundancy to an ESXi 5.x management network on a vSphere Standard Switch.

Which method should the administrator use to create redundant management networks?

- A. Configure the management network vSwitch with two active uplinks
- B. Configure an additional management portgroup on the same vSwitch
- C. Create a second management network on a second vSwitch in the same subnet
- D. Create a second management network on the same vSwitch in the same subnet

Answer: A

Question No : 61 - (Topic 2)

An administrator is building a new vSphere Standard Switch with two active uplinks. The physical switch ports for these uplinks are placed in an etherchannel.

Which load balancing policy should the administrator use to support the etherchannel configuration?

- A. Route based on IP hash
- B. Route based on the originating virtual port
- C. Route based on source MAC hash
- D. Route based on physical NIC load

Answer: A

Question No : 62 - (Topic 2)

Which two traffic types can be enabled on the VMkernel adapters of an ESXi 5.5 host using the vSphere Web Client? (Choose two.)

- A. Fault Tolerance Traffic
- B. Virtual SAN Traffic
- C. iSCSI Traffic
- D. Virtual Machine Traffic

Answer: A,B

Question No : 63 - (Topic 2)

An organization is designing a new vSphere cluster to support a new product implementation.

The following challenges have been identified by the vSphere administration team:

- The organization has the vSphere Enterprise License.
- The network team needs to gather virtual machine network statistics over a long period of time.
- The network team needs the ability to quickly assess virtual machine traffic in the event of an attack.
- The network team has previously had problems implementing manual etherchannel configurations on their physical switches, resulting in production outages.
- The new cluster's initial size is 15 hosts.

The organization is willing to upgrade to vSphere Enterprise Plus licensing if it addresses these challenges.

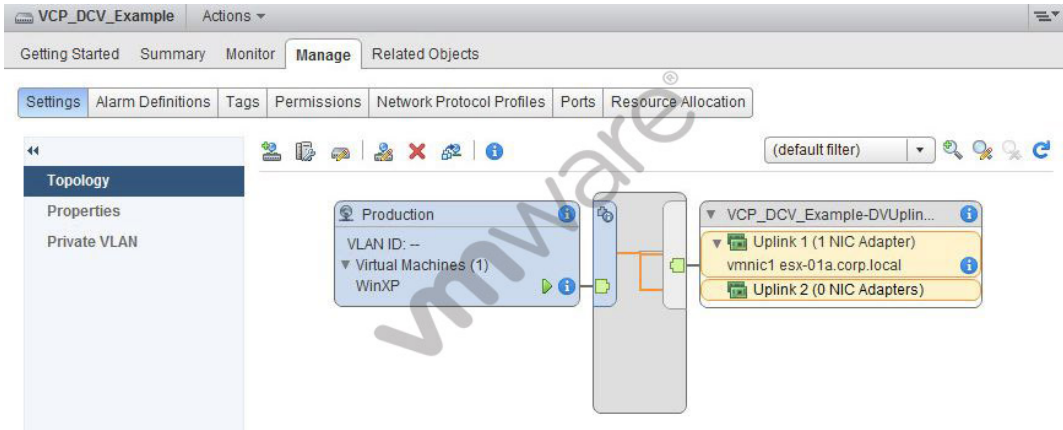
Which three features of a version 5.5 vSphere Distributed Switch would address these challenges? (Choose three.)

- A. LACP in Dynamic Mode
- B. Port Mirroring
- C. Network vMotion
- D. Private VLANs
- E. Network I/O Control

Answer: A,B,C

Question No : 64 - (Topic 2)

-- Exhibit --



-- Exhibit --

Users accessing the WinXP virtual machine shown in the exhibit report intermittent connectivity to the corporate network.

The configuration is as follows:

- This virtual machine runs in a DRS/HA cluster of two ESXi hosts.
- The VCP_DCV_Example vSphere Distributed Switch was recently created.
- The WinXP virtual machine was recently migrated from another vSphere Distributed Switch.
- The WinXP virtual machine was able to connect prior to migration to this switch.
- No changes to the VCP_DCV_Example switch have been made since creation.

Which step should the administrator take to resolve the WinXP virtual machine's intermittent connectivity to the corporate network?

- A. Add the ESXi host to the switch where the virtual machine is currently running
- B. Disable Port Blocking on the VCP_DCV_Example switch
- C. Disable Port Blocking on the Production port group
- D. Enable Network I/O Control on the switch to better balance I/O

Answer: A

Question No : 65 - (Topic 2)

An administrator needs to deploy a vSphere solution containing a number of hosts and a vSphere Distributed Switch.

Which steps should the administrator take to accomplish this?

- A.** Create the vSphere Distributed Switch, deploy the ESXi hosts, and then add each host to the switch.
- B.** Deploy the ESXi hosts, create an HA/DRS cluster containing the hosts, create the vSphere Distributed Switch, and then add the cluster to the switch.
- C.** Create the vSphere Distributed Switch and as each ESXi host is deployed it will be automatically added to the switch.
- D.** Deploy the ESXi hosts and then create the vSphere Distributed Switch on the hosts.

Answer: A

Question No : 66 - (Topic 2)

An administrator is migrating 135 virtual machines from a vSphere Standard Switch to a vSphere Distributed switch. The migration reports an error and only some of the virtual machines are transferred.

What is causing the error to occur?

- A.** The vSphere Distributed Switch was created with a single, default port group.
- B.** The switch has become disconnected from an ESXi host.
- C.** The port group on the vSphere Distributed Switch was not configured with an Elastic port binding.
- D.** The virtual machine that failed to transfer did not have a network adapter.

Answer: A

Topic 3, Plan and Configure vSphere Storage

Question No : 67 - (Topic 3)

Dumps with PDF and VCE (+Free VCE Software)

An administrator needs to deploy several virtual machines. Storage contention between the virtual machines should be managed by the VMkernel. Some of the virtual machines will use MSCS and should be highly available across the ESXi 5.5 hosts.

Which two storage options meet these requirements? (Choose two.)

- A. iSCSI
- B. NFS
- C. Fibre Channel
- D. vSAN

Answer: A,C

Question No : 68 - (Topic 3)

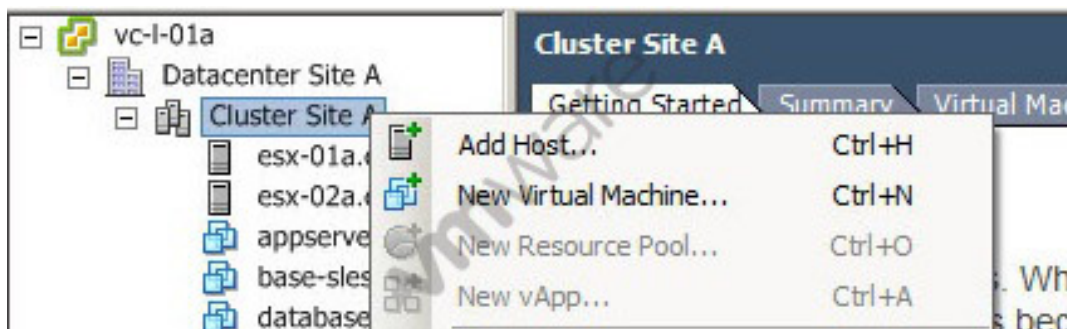
Which two precautions should a vSphere administrator take before increasing the size of a VMFS datastore? (Choose two.)

- A. Unmount the datastore
- B. Perform a rescan to ensure that all hosts see the most current storage
- C. Quiesce I/O on all disks involved
- D. Shut down all virtual machines stored in the datastore

Answer: B,C

Question No : 69 - (Topic 3)

-- Exhibit --



-- Exhibit --

What action should the vSphere administrator take to allow for a new vApp to be created in the cluster?

- A. Enable Distributed Resource Scheduling on the cluster
- B. Create a Resource Pool in the cluster, and create the vApp in the Resource Pool
- C. Enable High Availability on the cluster
- D. Create a new Datacenter, and create the vApp in the new Datacenter

Answer: A

Question No : 70 - (Topic 3)

An administrator is installing ESXi on several hosts attached to iSCSI storage.

Why would the administrator detach the host from the IP storage network prior to installation?

- A. It decreases the time the installer needs to search for available disk drives.
- B. It allows the installation of a generic VAAI component for IP storage.
- C. It prevents ESXi from installing vSphere Flash Cache to the IP storage.
- D. It is required when installing ESXi onto a physical server that utilizes IP storage.

Answer: A

Question No : 71 - (Topic 3)

Which two statements are true regarding a new vSphere deployment that is using software FCoE boot from SAN? (Choose two.)

- A. Multi-pathing options must be configured by the vmkernel after boot.
- B. The adapter must support iBFT or UEFI.
- C. The adapter must support FBFT or FBPT.
- D. Multi-pathing options must be configured in the Boot ROM.

Answer: A,C

Question No : 72 - (Topic 3)

What should an administrator do to configure multi-pathing using software iSCSI?

- A. Bind the VMkernel ports to the software iSCSI initiator
- B. Configure Zoning between the hosts and SAN switches
- C. Configure NIC teaming on the associated uplinks
- D. Ensure jumbo frames are enabled end-to-end

Answer: A

Question No : 73 - (Topic 3)

The current block size of a datastore in VMFS3 is 4MB. An administrator needs to upgrade the datastore to VMFS5 and wants to change it to 1MB block size.

Which action should the administrator take?

- A. Upgrade the datastore to VMFS 5. Select the 1MB block size option during the upgrade.
- B. Create a new VMFS5 datastore with a 1MB block size. Migrate all virtual machines from the existing datastore to the new datastore, then delete the VMFS3 datastore.
- C. Upgrade the datastore to VMFS5. Use vmkfstools to change the block size on the upgraded datastore.
- D. Create a new VMFS5 datastore with a 1MB block size. Migrate all virtual machines from the existing datastore to the new datastore. Upgrade the virtual machine hardware on the migrated VMs, then delete the VMFS3 datastore.

Answer: B

Question No : 74 - (Topic 3)

An administrator is creating a new VMFS volume and needs to make it available to all hosts within a datacenter using the Web Client.

What should the administrator scan for in order to meet this requirement?

- A. New Storage Devices and LUNs
- B. New Storage Devices and VMFS Volumes
- C. New VMFS Volumes and Datastores
- D. New VMFS Volumes and LUNs

Answer: B

Question No : 75 - (Topic 3)

An administrator attempts to delete a Storage Policy and receives an error.

Which two object types, if assigned a Storage Policy, would prevent the Storage Policy from being deleted? (Choose two.)

- A. A virtual machine.
- B. A virtual disk.
- C. A datastore.
- D. A datastore cluster.

Answer: A,B

Question No : 76 - (Topic 3)

An administrator has configured hardware acceleration for a Fibre Channel storage array. After a recent maintenance event, the administrator finds that cloning and migration operations are taking excessively long to complete.

Which two settings could cause hardware acceleration to become disabled? (Choose two.)

- A. VAAI Plugin Name = VMW_VAAIP_SYM
- B. VAAI Plugin Name = VMW_VAAIP_NETAPP
- C. VMFS3.HardwareAcceleratedLocking = 0
- D. Datamover.HardwareAcceleratedInit = 0

Answer: C,D

Question No : 77 - (Topic 3)

A VMFS5 datastore shows several errors, which suggests file system corruption.

Which tool could a vSphere administrator use to check the VMFS file system?

- A. vSphere On-disk Metadata Analyzer (VOMA)

- B. VMware Infrastructure Management Assistant (VIMA)
- C. vSphere Storage APIs for Storage Awareness (VASA)
- D. VMware vSphere Health Check Analyzer (VHCA)

Answer: A

Question No : 78 - (Topic 3)

A Windows Server 2008 virtual machine with the following configuration receives an Out of Space condition indicator:

- The virtual machine uses thin provisioned virtual disks.
- The VMFS5 datastore on which the virtual machine's files reside is on a thin provisioned LUN.
- 30% of the VMFS datastore content is no longer needed.
- The storage array supports VASA and VAAI.

Which action should the vSphere administrator take to resolve the Out of Space problem without requesting additional space on the storage array?

- A. Delete unneeded files on the VMFS datastore and then use vmkfstools to reclaim deleted blocks.
- B. Delete unneeded files on the VMFS datastore, right-click the datastore in vSphere Web Client, and then select the Reclaim Deleted Blocks option.
- C. Delete some files from the guest OS and defrag its file system.
- D. Delete some files from the guest OS and use vmkfstools to reclaim the deleted blocks.

Answer: A

Question No : 79 - (Topic 3)

What are two features provided by VMFS5? (Choose two.)

- A. Support for greater than 2TB storage devices for only VMFS and Physical RDMs
- B. Support for up to 32 extents
- C. Support for greater than 2TB storage devices for VMFS, Physical and Virtual RDMs
- D. Support for up to 64 extents

Answer: B,C

Question No : 80 - (Topic 3)

During the installation of ESXi, a vmkernel interface can be configured with what capabilities?

- A. Management traffic
- B. Management traffic and vMotion
- C. Management traffic, vMotion and Fault Tolerance logging
- D. Management traffic, vMotion, Fault Tolerance logging and IP storage

Answer: A

Question No : 81 - (Topic 3)

A server administrator reports that a virtual machine has displayed the following message twice in the past 12 months:

No boot device found

Which virtual machine boot option should the administrator configure to resolve this issue?

- A. Failed Boot Recovery
- B. Force BIOS Setup
- C. Boot Delay
- D. Network Boot Retry

Answer: A

Question No : 82 - (Topic 3)

An administrator is using vSphere Replication to replicate a number of virtual machines to a recovery site. The administrator plans on enabling Storage DRS on the production site, which is running vSphere 5.5. What changes must be made in order to support this configuration?

- A. Storage DRS can be added to the existing configuration without any configuration changes
- B. Disable Storage DRS on the virtual machines utilizing vSphere Replication
- C. Change the Recovery Point Objective for the replicated virtual machines to support the additional synchronization time
- D. Storage DRS cannot be used in conjunction with vSphere Replication

Answer: A

Question No : 83 - (Topic 3)

Which condition would prevent an administrator from unmounting a VMFS datastore?

- A. The datastore is being managed by Storage DRS.
- B. The datastore contains vCenter Server templates.
- C. The datastore is mounted by multiple hosts.
- D. The storage backing the datastore is detached.

Answer: A

Question No : 84 - (Topic 3)

A system administrator needs to control the allocation of memory and CPU resources to an organization's Finance team. The vSphere environment is built on a single cluster of ESXi hosts.

Which feature can be used to accomplish this task?

- A. Resource Pool Reservations
- B. DRS set to Fully Automated
- C. Virtual Machine Shares
- D. DRS Virtual Machine Groups

Answer: A

Question No : 85 - (Topic 3)

An administrator is planning a new vSphere deployment using shared storage. The solution must support:

- vMotion
- Storage vMotion
- Fault Tolerant virtual machines
- VAAI primitives
- RDM disks

Which storage type will meet these requirements?

- A. CIFS
- B. iSCSI
- C. NFS
- D. vSAN

Answer: B

Question No : 86 - (Topic 3)

Which information can the administrator use to identify iSCSI nodes?

- A. MAC address
- B. IQN
- C. WWN
- D. LUN ID

Answer: B

Question No : 87 - (Topic 3)

Which action should an administrator take to increase the size of a VMFS5 datastore from 2TB to 32TB?

- A. Dynamically expand the original LUN and add a second share for the NFS datastore
- B. Dynamically expand the original LUN and increase the size of the VMFS datastore

Microsoft Exams List

70-246 Dump PDF VCE	70-485 Dump PDF VCE	70-742 Dump PDF VCE	98-366 Dump PDF VCE
70-247 Dump PDF VCE	70-486 Dump PDF VCE	70-743 Dump PDF VCE	98-367 Dump PDF VCE
70-331 Dump PDF VCE	70-487 Dump PDF VCE	70-744 Dump PDF VCE	98-368 Dump PDF VCE
70-332 Dump PDF VCE	70-488 Dump PDF VCE	70-761 Dump PDF VCE	98-369 Dump PDF VCE
70-333 Dump PDF VCE	70-489 Dump PDF VCE	70-762 Dump PDF VCE	98-372 Dump PDF VCE
70-334 Dump PDF VCE	70-490 Dump PDF VCE	70-765 Dump PDF VCE	98-373 Dump PDF VCE
70-339 Dump PDF VCE	70-491 Dump PDF VCE	70-768 Dump PDF VCE	98-374 Dump PDF VCE
70-341 Dump PDF VCE	70-492 Dump PDF VCE	70-980 Dump PDF VCE	98-375 Dump PDF VCE
70-342 Dump PDF VCE	70-494 Dump PDF VCE	70-981 Dump PDF VCE	98-379 Dump PDF VCE
70-345 Dump PDF VCE	70-496 Dump PDF VCE	70-982 Dump PDF VCE	MB2-700 Dump PDF VCE
70-346 Dump PDF VCE	70-497 Dump PDF VCE	74-343 Dump PDF VCE	MB2-701 Dump PDF VCE
70-347 Dump PDF VCE	70-498 Dump PDF VCE	74-344 Dump PDF VCE	MB2-702 Dump PDF VCE
70-348 Dump PDF VCE	70-499 Dump PDF VCE	74-409 Dump PDF VCE	MB2-703 Dump PDF VCE
70-354 Dump PDF VCE	70-517 Dump PDF VCE	74-678 Dump PDF VCE	MB2-704 Dump PDF VCE
70-383 Dump PDF VCE	70-532 Dump PDF VCE	74-697 Dump PDF VCE	MB2-707 Dump PDF VCE
70-384 Dump PDF VCE	70-533 Dump PDF VCE	77-420 Dump PDF VCE	MB2-710 Dump PDF VCE
70-385 Dump PDF VCE	70-534 Dump PDF VCE	77-427 Dump PDF VCE	MB2-711 Dump PDF VCE
70-410 Dump PDF VCE	70-640 Dump PDF VCE	77-600 Dump PDF VCE	MB2-712 Dump PDF VCE
70-411 Dump PDF VCE	70-642 Dump PDF VCE	77-601 Dump PDF VCE	MB2-713 Dump PDF VCE
70-412 Dump PDF VCE	70-646 Dump PDF VCE	77-602 Dump PDF VCE	MB2-714 Dump PDF VCE
70-413 Dump PDF VCE	70-673 Dump PDF VCE	77-603 Dump PDF VCE	MB2-715 Dump PDF VCE
70-414 Dump PDF VCE	70-680 Dump PDF VCE	77-604 Dump PDF VCE	MB2-716 Dump PDF VCE
70-417 Dump PDF VCE	70-681 Dump PDF VCE	77-605 Dump PDF VCE	MB2-717 Dump PDF VCE
70-461 Dump PDF VCE	70-682 Dump PDF VCE	77-881 Dump PDF VCE	MB2-718 Dump PDF VCE
70-462 Dump PDF VCE	70-684 Dump PDF VCE	77-882 Dump PDF VCE	MB5-705 Dump PDF VCE
70-463 Dump PDF VCE	70-685 Dump PDF VCE	77-883 Dump PDF VCE	MB6-700 Dump PDF VCE
70-464 Dump PDF VCE	70-686 Dump PDF VCE	77-884 Dump PDF VCE	MB6-701 Dump PDF VCE
70-465 Dump PDF VCE	70-687 Dump PDF VCE	77-885 Dump PDF VCE	MB6-702 Dump PDF VCE
70-466 Dump PDF VCE	70-688 Dump PDF VCE	77-886 Dump PDF VCE	MB6-703 Dump PDF VCE
70-467 Dump PDF VCE	70-689 Dump PDF VCE	77-887 Dump PDF VCE	MB6-704 Dump PDF VCE
70-469 Dump PDF VCE	70-692 Dump PDF VCE	77-888 Dump PDF VCE	MB6-705 Dump PDF VCE
70-470 Dump PDF VCE	70-695 Dump PDF VCE	77-891 Dump PDF VCE	MB6-884 Dump PDF VCE
70-473 Dump PDF VCE	70-696 Dump PDF VCE	98-349 Dump PDF VCE	MB6-885 Dump PDF VCE
70-480 Dump PDF VCE	70-697 Dump PDF VCE	98-361 Dump PDF VCE	MB6-886 Dump PDF VCE
70-481 Dump PDF VCE	70-698 Dump PDF VCE	98-362 Dump PDF VCE	MB6-889 Dump PDF VCE
70-482 Dump PDF VCE	70-734 Dump PDF VCE	98-363 Dump PDF VCE	MB6-890 Dump PDF VCE
70-483 Dump PDF VCE	70-740 Dump PDF VCE	98-364 Dump PDF VCE	MB6-892 Dump PDF VCE
70-484 Dump PDF VCE	70-741 Dump PDF VCE	98-365 Dump PDF VCE	MB6-893 Dump PDF VCE

Cisco Exams List

010-151 Dump PDF VCE	350-018 Dump PDF VCE	642-737 Dump PDF VCE	650-667 Dump PDF VCE
100-105 Dump PDF VCE	352-001 Dump PDF VCE	642-742 Dump PDF VCE	650-669 Dump PDF VCE
200-001 Dump PDF VCE	400-051 Dump PDF VCE	642-883 Dump PDF VCE	650-752 Dump PDF VCE
200-105 Dump PDF VCE	400-101 Dump PDF VCE	642-885 Dump PDF VCE	650-756 Dump PDF VCE
200-120 Dump PDF VCE	400-151 Dump PDF VCE	642-887 Dump PDF VCE	650-968 Dump PDF VCE
200-125 Dump PDF VCE	400-201 Dump PDF VCE	642-889 Dump PDF VCE	700-001 Dump PDF VCE
200-150 Dump PDF VCE	400-251 Dump PDF VCE	642-980 Dump PDF VCE	700-037 Dump PDF VCE
200-155 Dump PDF VCE	400-351 Dump PDF VCE	642-996 Dump PDF VCE	700-038 Dump PDF VCE
200-310 Dump PDF VCE	500-006 Dump PDF VCE	642-997 Dump PDF VCE	700-039 Dump PDF VCE
200-355 Dump PDF VCE	500-007 Dump PDF VCE	642-998 Dump PDF VCE	700-101 Dump PDF VCE
200-401 Dump PDF VCE	500-051 Dump PDF VCE	642-999 Dump PDF VCE	700-104 Dump PDF VCE
200-601 Dump PDF VCE	500-052 Dump PDF VCE	644-066 Dump PDF VCE	700-201 Dump PDF VCE
210-060 Dump PDF VCE	500-170 Dump PDF VCE	644-068 Dump PDF VCE	700-205 Dump PDF VCE
210-065 Dump PDF VCE	500-201 Dump PDF VCE	644-906 Dump PDF VCE	700-260 Dump PDF VCE
210-250 Dump PDF VCE	500-202 Dump PDF VCE	646-048 Dump PDF VCE	700-270 Dump PDF VCE
210-255 Dump PDF VCE	500-254 Dump PDF VCE	646-365 Dump PDF VCE	700-280 Dump PDF VCE
210-260 Dump PDF VCE	500-258 Dump PDF VCE	646-580 Dump PDF VCE	700-281 Dump PDF VCE
210-451 Dump PDF VCE	500-260 Dump PDF VCE	646-671 Dump PDF VCE	700-295 Dump PDF VCE
210-455 Dump PDF VCE	500-265 Dump PDF VCE	646-985 Dump PDF VCE	700-501 Dump PDF VCE
300-070 Dump PDF VCE	500-275 Dump PDF VCE	648-232 Dump PDF VCE	700-505 Dump PDF VCE
300-075 Dump PDF VCE	500-280 Dump PDF VCE	648-238 Dump PDF VCE	700-601 Dump PDF VCE
300-080 Dump PDF VCE	500-285 Dump PDF VCE	648-244 Dump PDF VCE	700-602 Dump PDF VCE
300-085 Dump PDF VCE	500-290 Dump PDF VCE	648-247 Dump PDF VCE	700-603 Dump PDF VCE
300-101 Dump PDF VCE	500-801 Dump PDF VCE	648-375 Dump PDF VCE	700-701 Dump PDF VCE
300-115 Dump PDF VCE	600-199 Dump PDF VCE	648-385 Dump PDF VCE	700-702 Dump PDF VCE
300-135 Dump PDF VCE	600-210 Dump PDF VCE	650-032 Dump PDF VCE	700-703 Dump PDF VCE
300-160 Dump PDF VCE	600-211 Dump PDF VCE	650-042 Dump PDF VCE	700-801 Dump PDF VCE
300-165 Dump PDF VCE	600-212 Dump PDF VCE	650-059 Dump PDF VCE	700-802 Dump PDF VCE
300-180 Dump PDF VCE	600-455 Dump PDF VCE	650-082 Dump PDF VCE	700-803 Dump PDF VCE
300-206 Dump PDF VCE	600-460 Dump PDF VCE	650-127 Dump PDF VCE	810-403 Dump PDF VCE
300-207 Dump PDF VCE	600-501 Dump PDF VCE	650-128 Dump PDF VCE	820-424 Dump PDF VCE
300-208 Dump PDF VCE	600-502 Dump PDF VCE	650-148 Dump PDF VCE	840-425 Dump PDF VCE
300-209 Dump PDF VCE	600-503 Dump PDF VCE	650-159 Dump PDF VCE	
300-210 Dump PDF VCE	600-504 Dump PDF VCE	650-281 Dump PDF VCE	
300-320 Dump PDF VCE	640-692 Dump PDF VCE	650-393 Dump PDF VCE	
300-360 Dump PDF VCE	640-875 Dump PDF VCE	650-472 Dump PDF VCE	
300-365 Dump PDF VCE	640-878 Dump PDF VCE	650-474 Dump PDF VCE	
300-370 Dump PDF VCE	640-911 Dump PDF VCE	650-575 Dump PDF VCE	
300-375 Dump PDF VCE	640-916 Dump PDF VCE	650-621 Dump PDF VCE	
300-465 Dump PDF VCE	642-035 Dump PDF VCE	650-663 Dump PDF VCE	
300-470 Dump PDF VCE	642-732 Dump PDF VCE	650-665 Dump PDF VCE	
300-475 Dump PDF VCE	642-747 Dump PDF VCE	650-754 Dump PDF VCE	

HOT EXAMS

Cisco

[100-105 Dumps VCE PDF](#)
[200-105 Dumps VCE PDF](#)
[300-101 Dumps VCE PDF](#)
[300-115 Dumps VCE PDF](#)
[300-135 Dumps VCE PDF](#)
[300-320 Dumps VCE PDF](#)
[400-101 Dumps VCE PDF](#)
[640-911 Dumps VCE PDF](#)
[640-916 Dumps VCE PDF](#)

Microsoft

[70-410 Dumps VCE PDF](#)
[70-411 Dumps VCE PDF](#)
[70-412 Dumps VCE PDF](#)
[70-413 Dumps VCE PDF](#)
[70-414 Dumps VCE PDF](#)
[70-417 Dumps VCE PDF](#)
[70-461 Dumps VCE PDF](#)
[70-462 Dumps VCE PDF](#)
[70-463 Dumps VCE PDF](#)
[70-464 Dumps VCE PDF](#)
[70-465 Dumps VCE PDF](#)
[70-480 Dumps VCE PDF](#)
[70-483 Dumps VCE PDF](#)
[70-486 Dumps VCE PDF](#)
[70-487 Dumps VCE PDF](#)

CompTIA

[220-901 Dumps VCE PDF](#)
[220-902 Dumps VCE PDF](#)
[N10-006 Dumps VCE PDF](#)
[SY0-401 Dumps VCE PDF](#)