



Vendor: IBM

Exam Code: SPS-200

Exam Name: IBMSPSSMPRO: IBM SPSS Modeler
Professional

Version: DEMO

1. Which key items must be identified before a data mining project is started? (Select all that apply)

- A. A business problem or question
- B. Data quality problem
- C. Available data
- D. Available expertise on the data and business

Answer: B

2. Given the following Output Table to create a select node which includes vehicles from both groups A and B, click on A and on B (as shown) and select from the menu. ?

	Policyholder age	Vehicle group	Vehicle age	Average cost of claims	Number of claims
1	17-20	A	0-3	259	0
2	17-20	A	4-7	282	8
3	17-20	A	8-9	133	4
4	17-20	A	10+	160	1
5	17-20	B	0-3	377	10
6	17-20	B	4-7	249	26
7	17-20	B	8-9	280	1
8	17-24	B	10+	11	1
9	17-20	C	0-3	199	9
10	10-20	C	4-7	285	73
11	17-20	C	8-9	179	1
12	17-20	C	10+	Sum5	0
13	17-20	D	0-3	783	3
14	12-20	D	4-7	88	2
15	17-20	D	8-9	Sum5	0
16	17-20	D	10+	Sum5	0
17	21-24	A	0-3	302	10
18	21-24	A	4-7	194	31
19	21-24	A	8-9	135	10
20	21-24	A	10+	100	4

- A. Generate Select Node $\text{ }^{\circ} \text{rn}$
- B. Generate Select Node $\text{ }^{\circ} \text{A d}$

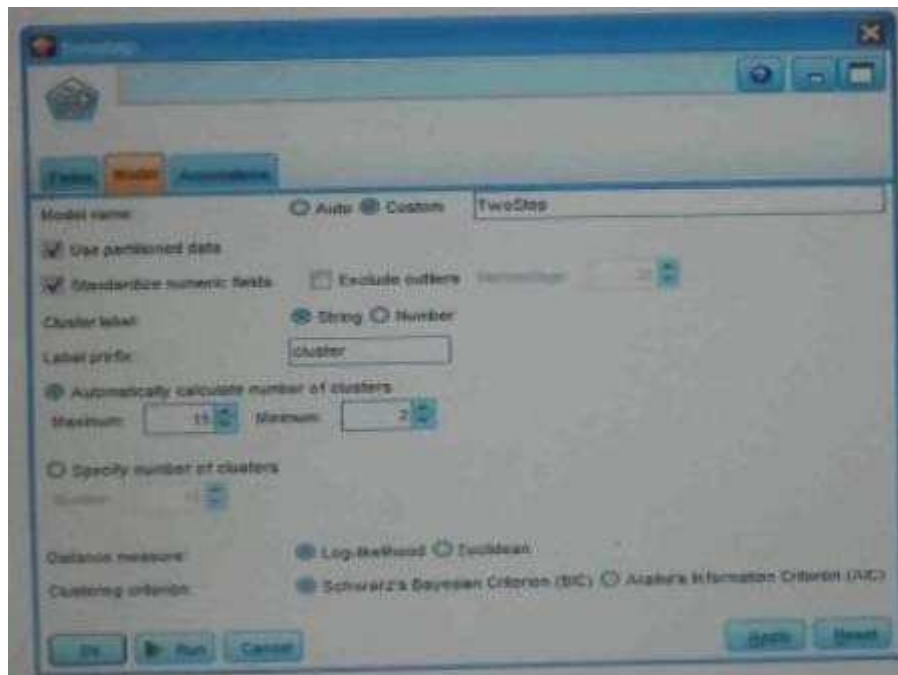
Answer: B

3. Which nodes are best suited for revealing relationship between categorical (nominal, ordinal) fields? (Select all that apply)

- A. Means node
- B. Matrix node
- C. Distribution node
- D. Table node

Answer: A,C

4. In two step node shown below, what does standardize numeric fields mean?



- A. Eliminate outliers to improve results.
- B. Transform the numeric fields to a scale with a mean of zero and variance of one.
- C. Limit the number of created clusters.
- D. Use only the numeric fields scale.

Answer: B

5. Which statement is correct regarding the sample node dialogue shown below?



- A. It will select every 60th record from the data.
- B. It will randomly select exactly 60% of all the record.

C. It will select approximately 60% of the records. This is, each record will have a 60% probability of being selected.

D. It will always draw the same 60% of records each time this sample node is run.

Answer: C

6. Which statements are true of the Feature Selection node? (Select all that apply)

A. Input fields can be selected on the basis of importance.

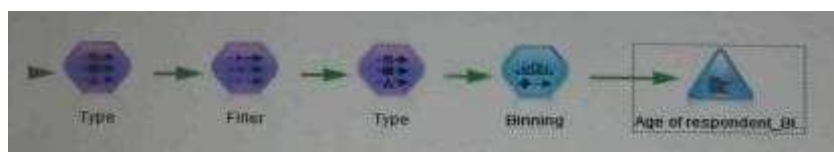
B. The Target fields can be either categorical or continuous measurement.

C. The Input fields can only be continuous measurement.

D. When a target field is not specified then it will create a generalized output.

Answer: A,B

7. What is the reason that the three nodes in the following figure have been colored purple?



A. The purple nodes were pushed back to the database.

B. IBM SPSS Modeler is running out of memory.

C. The purple nodes will be executed later.

D. There are multiple type nodes in a row.

Answer: A

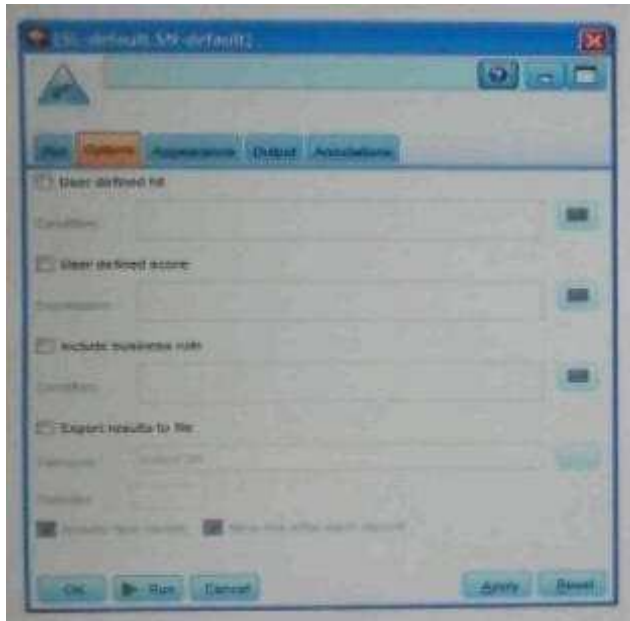
8. On the PCA/Factor node when doing a Principle Component analysis without rotation, the values reported on the Component Matrix represents the correlation between each field and factor.

A. True

B. False

Answer: B

9.As a default, the Evaluation node provides a graph of the first category of your target field. To change the category, you need to modify which sector?



- A. User defined hit
- B. User defined score
- C. Include business rule
- D. Export results to file

Answer: A

10.Which Model nodes can have a categorical target field? (Select all that apply)

- A. Discriminant node
- B. Linear node
- C. Neutral Net node
- D. C & R Tree node

Answer: A,B