



**Vendor:** Juniper

**Exam Code:** JN0-360

**Exam Name:** Service Provider, Specialist (JNCIS-SP)

**Version:** DEMO

1.What are two valid actions that can be applied to a frame by a Layer 2 firewall filter?

(Choose two)

- A.Log
- B.loss-priority
- C.sample
- D.count

**Answer:** BD

2.Which two statements describe differences between IPv4 and IPv6.? (Choose two)

- A.IPsec is built into IPv6
- B.IPv6 uses a 32-bit (4-byte) address and can support up to 4,294,967,296 addresses
- C.IPv4 supports extension headers whereas IPv6 options are integrated into the base
- D.IPv6 eliminates the need for NAT

**Answer:** AD

3.You must configure an OSPF area that does not accept type 3 link-state advertisements (LSAs) from area 0 (other than the default route) You have configured your area to be stub, but you still see type 3 LSAs.

What will account for this behavior?

- A.You should have configured your area as totally stubby
- B.You should have used a not-so-stubby-area
- C.You are experiencing a routing loop
- D.You have exported routes into OSPF

**Answer:** A

4.You have configured an IP-IP tunnel between Router A and Router B

Which Junos operational mode command is used to verify that the tunnel interface is up and operational?

- A.show chassis tunnel status
- B.show tunnel interface
- C.show interfaces terse
- D.show interfaces tunnel

**Answer:** C

5.Which IS-IS packet is used to determine the level of an IS-IS neighbor?

- A.IIH
- B.LSP
- C.PSNP
- D.CSNP

**Answer:** A

6.Router A is an OSPF router connected to both Area 0 and Area 1 Area 1 has been configured as a stub area Which two LSA types does Router A suppress from Area 1 ?

- A.Router LSA

- B.External LSA
- C.Summary LSA
- D.ASBR Summary LSA

**Answer: A**

7.You are logged into a router and have navigated to the (edit routing-options] level of the hierarchy. You have been asked to create a static route that will use 10.10.10.1 as its primary next-hop and 10.10.10.5 as its secondary next-hop.

Which command correctly configures this scenario?

- A.set static route 8/8 10.10.10.1 qualified-next-hop 10.10.10.5 pref 10
- B.set static route 8/8 next-hop 10.10.10.1 secondary-next-hop 10.10.10.5 preference 10
- C.set static route 8/8 next-hop 10.10.10.1 qualified-next-hop 10.10.10.5 preference 10
- D.set static route 8/8 next-hop [10.10.10.1 10.10.10.5] pref 10

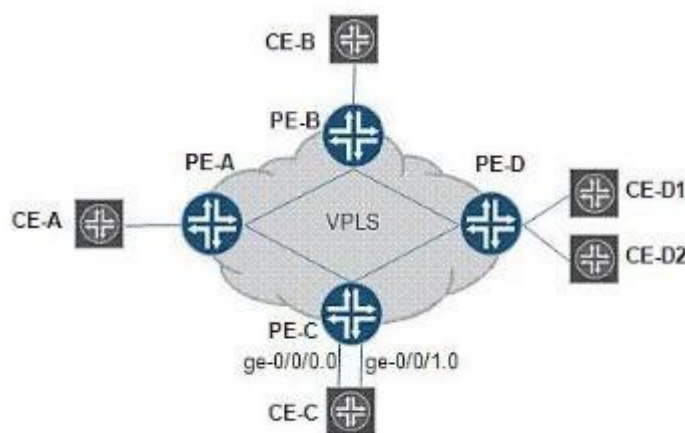
**Answer: C**

8.Which Junos operational mode command is used to verify that load balancing is working as expected?

- A.show route all
- B.show route extensive
- C.show route balancing
- D.show route forwarding-table

**Answer: D**

9.Click the Exhibit button



Based on the illustration of the VPLS topology shown in the exhibit, which statement is true?

- A.PE-C must have a spanning-tree protocol enabled
- B.CE-C must have BGP enabled
- C.Traffic forwarded from PE-C to PE-A is forwarded on to PE-B
- D.Traffic forwarded from PE-C to PE-A is not forwarded on to PE-B

**Answer: D**

10. Which two values displayed in the output from the show spanning-tree MSTP configuration command must match on all switches participating in the same MSTP region? (Choose two)

- A. root bridge identifier
- B. authentication checksum
- C. context identifier
- D. configuration digest

**Answer: CD**

11. Which role does the router ID (RID) have in the BGP route selection process?

- A. The router ID is evaluated immediately after MED to determine route preference
- B. The router ID is evaluated last in the route selection process
- C. The router ID is evaluated after the cluster length and a lower router ID is chosen
- D. The router ID is evaluated after analyzing the IGP metric cost

**Answer: C**

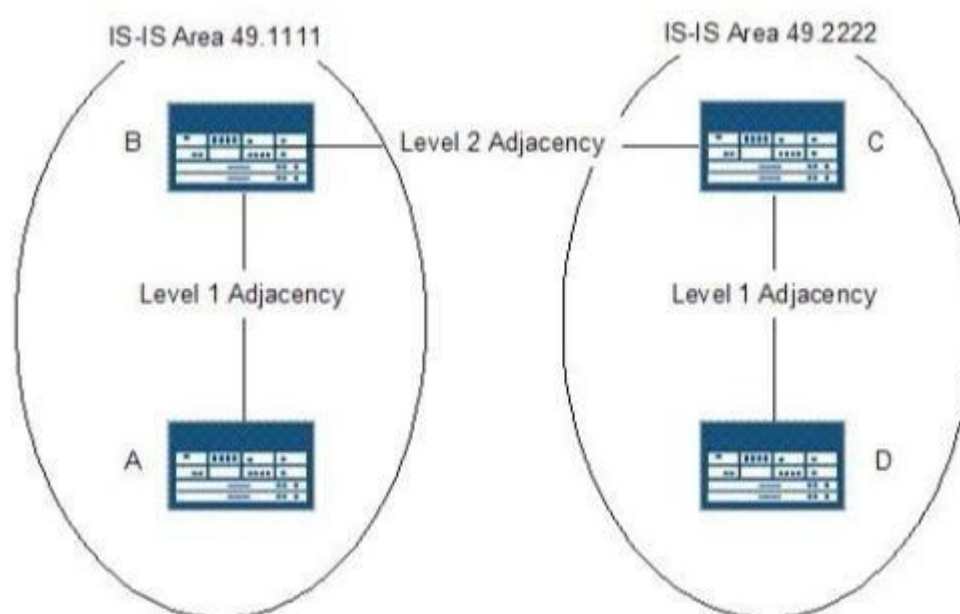
12. You are logged into a router and have navigated to the [edit routing-options] level of the hierarchy. You have been asked to create a static route that will use 43.18.7.1 as its primary next-hop and 76.13.10.2 as its secondary next-hop.

Which command correctly configures this setup?

- A. set static route 0/0 76.13.10.2 qualified-next-hop 43.18.7.1 pref 10
- B. set static route 0/0 next-hop 43.18.7.1 secondary-next-hop 76.13.10.2 preference 10
- C. set static route 0/0 next-hop [76.13.10.2 10.10.10.5] pref 10
- D. set static route 0/0 next-hop 43.18.7.1 qualified-next-hop 76.13.10.2 preference 10

**Answer: D**

13. Click the Exhibit button



Referring to the network illustrated in the exhibit, how does router A reach destinations in area 49.2222?

- A.Router A will use the routes from area 49.2222; it learns from router B
- B.Router A will see the attached bit from router B and create a default route
- C.Router A must have a default route manually configured
- D.Router A will receive a default route in the IS-IS update from router B

**Answer: B**

14.You have recently implemented a graceful Routing-Engine switchover (GRES) and want to further reduce down time if a Routing Engine (RE) failure occurs.

Which two features can be configured on this device to reduce its downtime in this situation?

(Choose two)

- A.VRRP
- B.GR
- C.BFD
- D.NSR

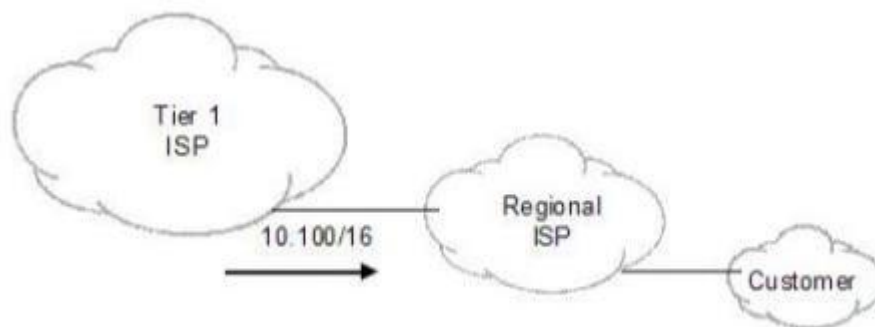
**Answer: D**

15.Which BGP state denotes a fully operational session?

- A.Established
- B.Active
- C.Operational
- D.Connect

**Answer: A**

16.Click the Exhibit button



You work for the regional Internet service provider shown in the exhibit You have a partial BGP table and are receiving a 10 100/16 route from your upstream ISP You have been asked to configure a default route that can be sent to your downstream customer This route should forward customer traffic toward your upstream Tier 1ISP as long as the 10.100/16 route is present.

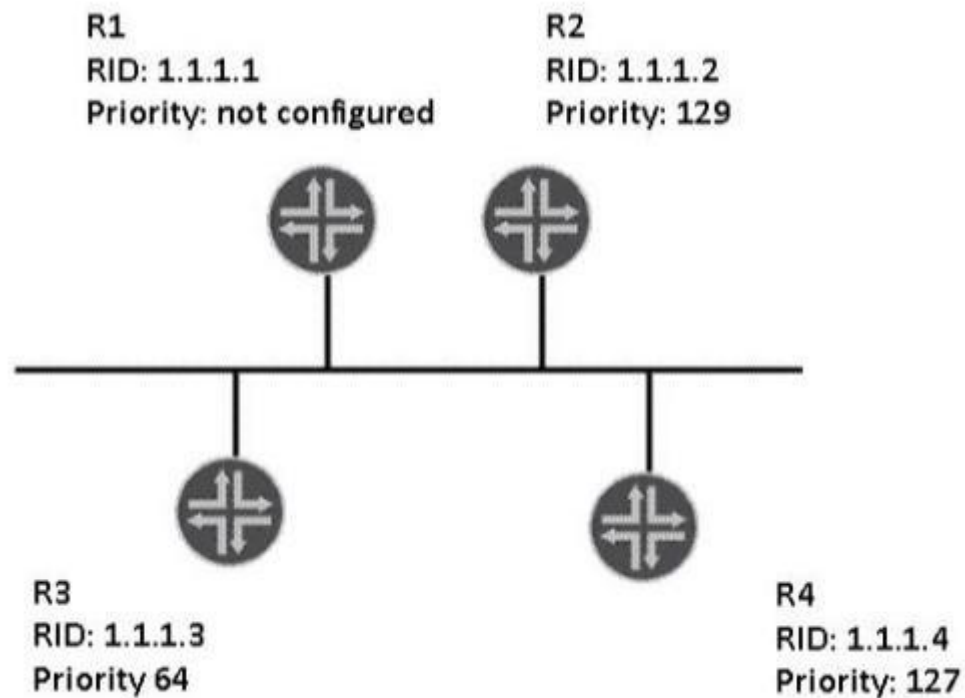
What would accomplish this goal?

- A.Create and announce an aggregate default route
- B.Create and announce a static default route with a next-hop of discard
- C.Create and announce a static default route with a next-hop of reject
- D.Create and announce a generated default route

E.Create an advertise-map with exist-map

**Answer: E**

17.Click the Exhibit button



In the exhibit, OSPF routers R1, R2, R3, and R4 come up, in order, at 1-minute intervals. Which router will be the designated router?.

- A.R1
- B.R2
- C.R3
- D.R4

**Answer: A**

18.You have been asked to configure an IPv6 address for a group of interfaces that could belong on different routers. If a packet is sent to that address, it should be received by all routers in the group. Which address type would be suited for these requirements?

- A.Unicast
- B.Multicast
- C.Anycast
- D.Broadcast

**Answer: B**

19.What is the function of the hop limit field in the IPv6 header?

- A.It limits the diameter of the network to 20 hops
- B.It sets the number of hops in the network to be equal to the MPLS header time-to-live (TTL)
- C.It replaces the time-to-live (TTL) field in IPv4
- D.It represents future extensibility to the protocol

**Answer: C**

20. You have been asked to define a default gateway for traffic leaving a router. This route should use interface so-0/0/0 as its next-hop. Which type of route would be suited for this scenario?

A. a static route

B. a generated route

C. a martian route

D. an aggregate route

**Answer: A**