



Vendor: HP

Exam Code: HP0-Y43

**Exam Name: Implementing HP Network Infrastructure
Solutions Exam**

Version: Demo

QUESTION 1

A customer requires an HP FlexCampus solution with a core that scales to 40/100G. Which HP switch fabric meets this need?

- A. the 7500's CLOS switch fabric
- B. the 10500's CLOS switch fabric
- C. the 7500's crossbar switch fabric
- D. the 10500's crossbar switch fabric

Correct Answer: B

QUESTION 2

What is the role of neighbor solicitation (NS) messages in the autoconfiguration of an IPv6 address?

- A. An IPv6 node sends an NS message to inform a node undergoing autoconfiguration that it is already using a particular address.
- B. An IPv6 node sends an NS message for its tentative address to determine whether another node is using it.
- C. An IPv6 node sends an NS message for the global prefix to prompt other IPv6 nodes to advertise the addresses that they are using on that prefix.
- D. An IPv6 node sends an NS message to prompt an IPv6 router on the link to advertise the global prefixes associated with the link immediately.

Correct Answer: B

QUESTION 3

Which switch is best suited to act at the edge of a medium to large HP FlexFabric solution?

- A. 10500
- B. 5500
- C. 9500
- D. 5830

Correct Answer: D

QUESTION 4

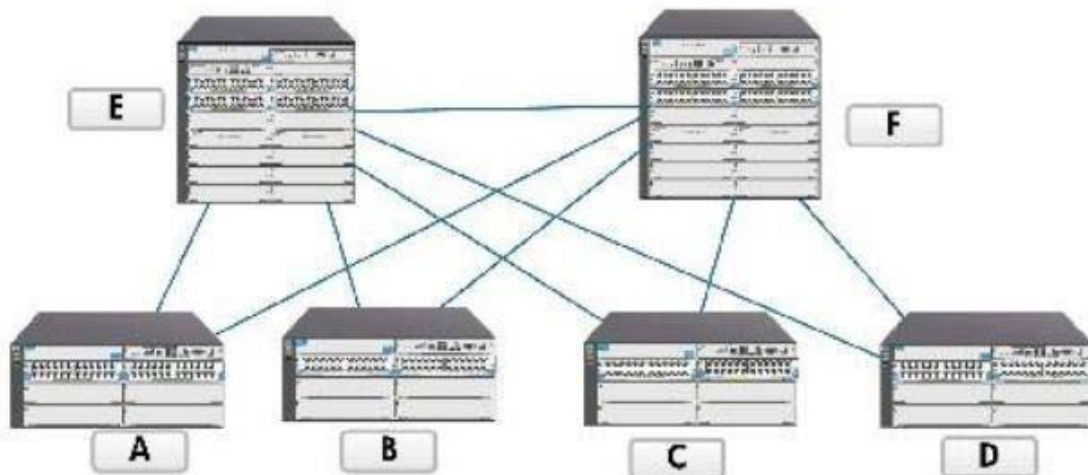
How can a high density of ports and high throughput at the core of an HP FlexNetwork save customers money?

- A. Intelligence is offloaded from the edge switches, enabling customers to save money on the most numerous switches in their solutions.
- B. The customer can combine the data center and campus LAN core into a single entity, reducing power and cooling costs.
- C. The customer no longer needs to deploy modular switches at the distribution level and the edge, deploying more cost-effective stackable switches instead.
- D. The architecture can be simplified, eliminating expensive distribution devices and reducing power and cooling costs.

Correct Answer: D

QUESTION 5

View the exhibit. The exhibit shows a network with HP 5400 zl and 8200 zl switches throughout the core and edge. What is one advantage of implementing routing on edge switches?



- A. Typically, it is easier to implement user-based VLAN assignments.
- B. The topology has higher redundancy because edge switches can take over routing roles when necessary.
- C. Typically, the network can use fewer total VLANs when edge switches implement routing.
- D. Typically, it is easier to ensure that routed links between edge and core switches are fully utilized.

Correct Answer: D

QUESTION 6

A company has a network that includes HP 5800 and 12500 switches. Usage demands on the company's FTP servers have increased, causing performance issues during peak usage times. While analyzing link utilization, the network administrator noticed that the most heavily utilized links experience bursts of congestion, causing them to drop traffic. The links then experience brief periods of low utilization followed by another burst of congestion. This pattern continues periodically throughout the peak utilization time.

What should the network administrator do to attempt to create a more efficient traffic pattern on these links?

- A. Configure an outbound traffic policing policy on the ports in question, setting the CIR at about sixty percent of the ports' capacity and the PIR at about eighty percent.
- B. Apply Weighted Fair Queuing (WFQ) or Weighted Round Robin (WRR) scheduling in preference to Strict Priority (SP) scheduling on the ports in question.
- C. Configure inbound traffic policing policies on ports at the core, setting the CIR at about sixty percent of the ports' capacity and the PIR at about eighty percent. Apply outbound generic traffic shaping (GTS) on ports facing the core ports, setting the CIR equal to the CIR on the core ports.
- D. Apply a WRED table to the ports in question, optionally adjusting the table values to drop lower priority traffic first.

Correct Answer: D

QUESTION 7

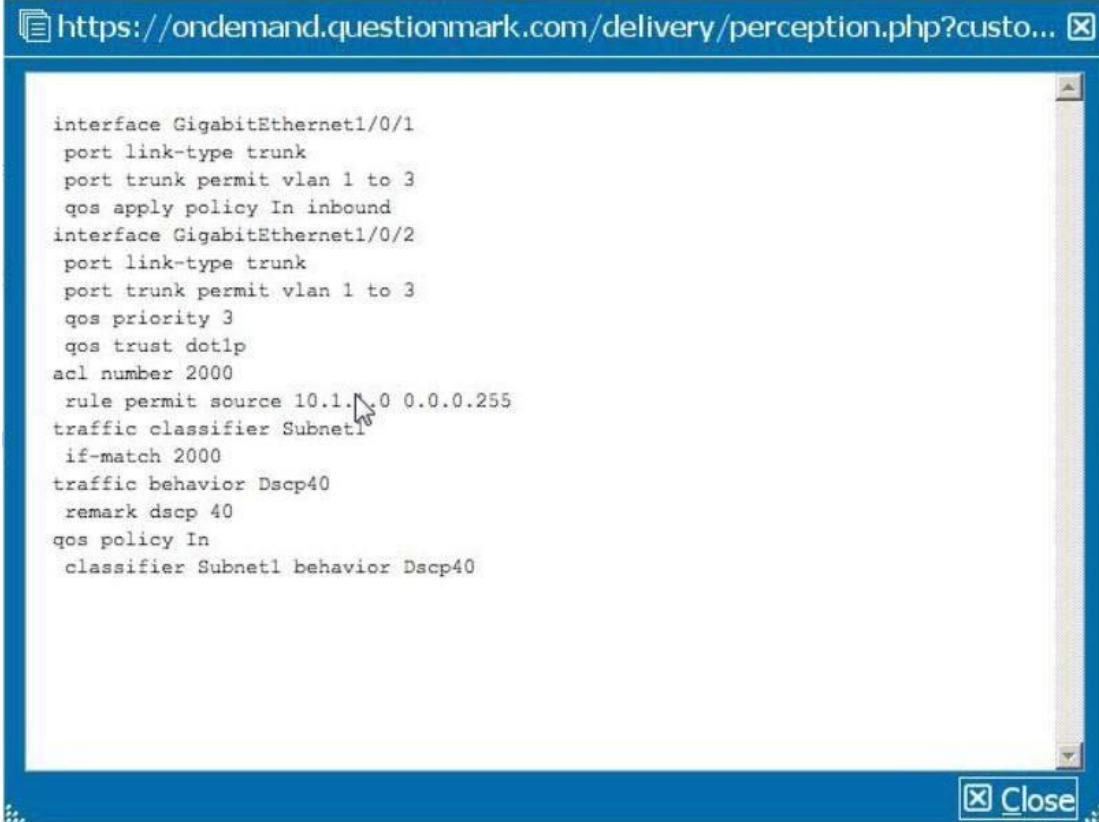
View the exhibits.

Exhibit 1

The frame has these characteristics:

- VLANID = 3
- 802.1p = 3
- DSCP=32
- Source IP address = 10.1.1.5

Exhibit 2



```
interface GigabitEthernet1/0/1
port link-type trunk
port trunk permit vlan 1 to 3
qos apply policy In inbound
interface GigabitEthernet1/0/2
port link-type trunk
port trunk permit vlan 1 to 3
qos priority 3
qos trust dot1p
acl number 2000
rule permit source 10.1.1.0 0.0.0.255
traffic classifier Subnet1
if-match 2000
traffic behavior Dscp40
remark dscp 40
qos policy In
classifier Subnet1 behavior Dscp40
```

The frame shown in Exhibit 1 arrives on an HP 5800 switch's Gigabit Ethernet port 1/0/1. QoS maps are at their default settings. Based on the configuration shown in Exhibit 2, to which queue is the outbound packet assigned?

- A. 2
- B. 3
- C. 4
- D. 5

Correct Answer: D

EnsurePass.com Members Features:

1. Verified Answers researched by industry experts.
2. Q&As are downloadable in PDF and VCE format.
3. 98% success Guarantee and **Money Back** Guarantee.
4. Free updates for **180** Days.
5. **Instant Access to download the Items**

View list of All Exam provided:

<http://www.ensurepass.com/certifications?index=A>

To purchase Lifetime Full Access Membership click here:

<http://www.ensurepass.com/user/register>

Valid Discount Code for 2015: JREH-G1A8-XHC6

To purchase the HOT Exams:

<u>Cisco</u>		<u>CompTIA</u>		<u>Oracle</u>	<u>VMWare</u>	<u>IBM</u>
<u>100-101</u>	<u>640-554</u>	<u>220-801</u>	<u>LX0-101</u>	<u>1Z0-051</u>	<u>VCAD510</u>	<u>C2170-011</u>
<u>200-120</u>	<u>200-101</u>	<u>220-802</u>	<u>N10-005</u>	<u>1Z0-052</u>	<u>VCP510</u>	<u>C2180-319</u>
<u>300-206</u>	<u>640-911</u>	<u>BR0-002</u>	<u>SG0-001</u>	<u>1Z0-053</u>	<u>VCP550</u>	<u>C4030-670</u>
<u>300-207</u>	<u>640-916</u>	<u>CAS-001</u>	<u>SG1-001</u>	<u>1Z0-060</u>	<u>VCAC510</u>	<u>C4040-221</u>
<u>300-208</u>	<u>640-864</u>	<u>CLO-001</u>	<u>SK0-003</u>	<u>1Z0-474</u>	<u>VCP5-DCV</u>	<u>RedHat</u>
<u>350-018</u>	<u>642-467</u>	<u>ISS-001</u>	<u>SY0-301</u>	<u>1Z0-482</u>	<u>VCP510PSE</u>	<u>EX200</u>
<u>352-001</u>	<u>642-813</u>	<u>JK0-010</u>	<u>SY0-401</u>	<u>1Z0-485</u>		<u>EX300</u>
<u>400-101</u>	<u>642-832</u>	<u>JK0-801</u>	<u>PK0-003</u>	<u>1Z0-580</u>		
<u>640-461</u>	<u>642-902</u>			<u>1Z0-820</u>		

