



Vendor: HP

Exam Code: HP0-S27

Exam Name: Implementing HP BladeSystem Solutions

Version: DEMO

1. When using a c7000 enclosure with six BL680c Server Blades installed, what is the maximum number of StorageWorks SB1760c Tape Blades that can be installed?

- A.1
- B.2
- C.4
- D.6
- E.8

Answer: B

2. Which type of mezzanine cards are supported by the BL860c? (Select two.)

- A.Type 1
- B.Type 2
- C.Type 3
- D.Type 4
- E.Type 5

Answer: A,B

3. What are two results of defining a shared uplink set when using Virtual Connect Manager network setup wizard? (Select two.)

- A. enables multiple ports to be included to support port aggregation and link failover with a consistent set of VLAN tags
- B. enables multiple external Virtual Connect modules to communicate through any external port without the use of stacking cables
- C. identifies Virtual Connect Ethernet module uplinks that carry multiple networks over the same cable
- D. defines an optimized private communications path for server blades installed in non-adjacent enclosure bays

Answer: A,C

4. Which power management settings can be configured for a c7000 enclosure? (Select three.)

- A. Not Redundant
- B. Active / Standby
- C. AC Redundant
- D. Power Supply Redundant
- E. UPS protected

Answer: A,C,D

5. DRAG DROP

Click the Task button. You want to configure HP SIM to periodically compare the configuration of managed nodes. Place the recommended steps for accomplishing this in

the correct order.

Drag and Drop

You want to configure HP SIM to periodically compare the configuration of managed nodes. Place the recommended steps for accomplishing this in the correct order.

place Step 1 here	Select server and click on Options > Data Collection
place Step 2 here	Create second data set
place Step 3 here	Select baseline and run report
place Step 4 here	Select "Append new data set" and create initial collection
place Step 5 here	Select the server and click on Reports-Snapshot comparison

Done

Answer:

Drag and Drop

You want to configure HP SIM to periodically compare the configuration of managed nodes. Place the recommended steps for accomplishing this in the correct order.

Select server and click on Options > Data Collection
Select "Append new data set" and create initial collection
Create second data set
Select the server and click on Reports-Snapshot comparison
Select baseline and run report

Done

6. A system administrator wants to access HP SIM via a browser. Which URL should be typed into the browser address bar to access the HP SIM login page?

- A. http://<MachineName>:2301
- B. http://<MachineName>:50000
- C. https://<MachineName>:2381
- D. https://<MachineName>:50000

Answer: D

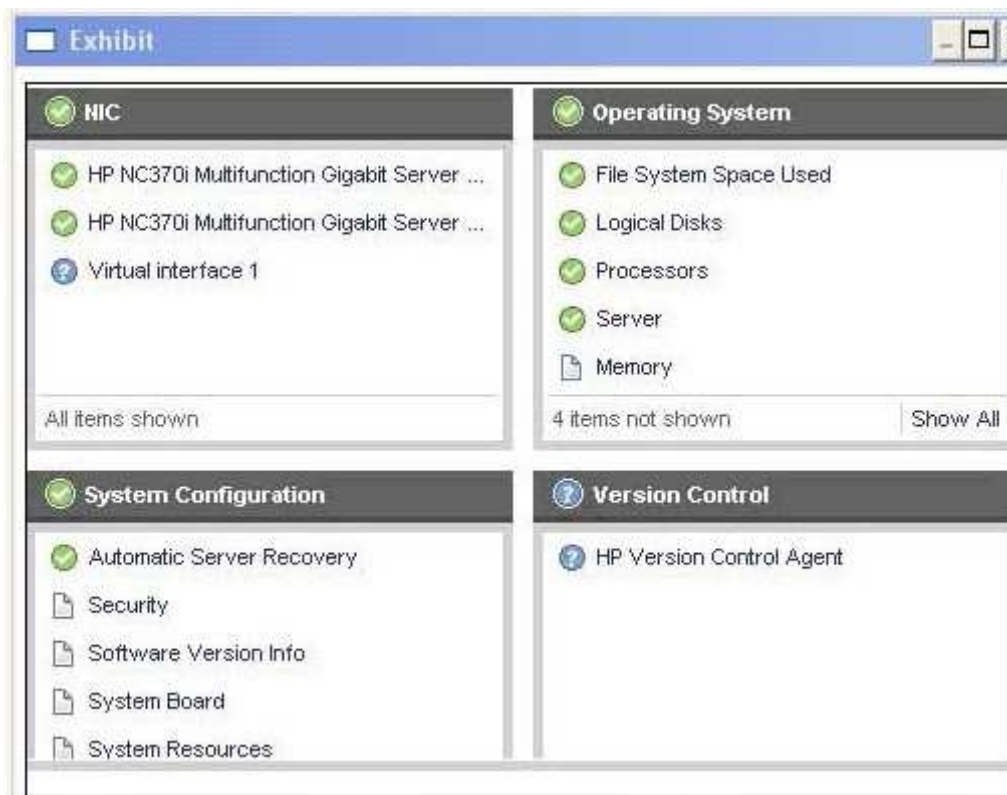
7. Which features have been enhanced in the 6.0 release of HP SIM? (Select two.)

- A.virus detection
- B.Onboard Administrator integration
- C.License Manager
- D.storage essentials
- E.reporting

Answer: C,E

8.Click the Exhibit button.

A customer asks about the blue question mark next to Version Control, which is shown in the exhibit. What does the blue question mark indicate?



- A.HP Version Control is not up to date.
- B.HP Version Control Agent is not configured.
- C.HP SIM is running in third-party compatibility mode.
- D.HP SIM events need to be cleared.

Answer: B

9.Which VMware product enables IT organizations to provide self-service provisioning and management capabilities to internal teams?

- A.VMware Site Recovery Manager
- B.VMware Lab Manager
- C.VMware View
- D.VMware vCenter

Answer: B

10. An incorrect IP address has been configured on your blade switch. How do you correct this problem?

- A. Update your firmware on the Onboard Administrator.
- B. Run erase from SmartStart using Virtual Media.
- C. Remove and then replace the blade switch in the enclosure.
- D. Use the Command Line Interface through the Onboard Administrator.

Answer: D

11. You are working on a rack containing three c7000 enclosures. What provides you with the most information about enclosure status?

- A. Insight Display
- B. Integrated Management Log
- C. HP System Management Homepage
- D. Integrated Lights Out Log

Answer: A

12. Which interconnect module provides 16 uplink ports and 16 downlink ports, all capable of supporting 40Gbps bandwidth?

- A. HP BLc 4X QDR IB Switch for HP BladeSystem c-Class
- B. Cisco Catalyst Blade Switch 3120G/X for HP BladeSystem c-Class
- C. HP StorageWorks 3Gb SAS BL Switch for HP BladeSystem c-Class
- D. HP ProCurve 6120XG for HP BladeSystem c-Class

Answer: A

13. What may be needed to connect a SB40c with a full-height server?

- A. PCI Expansion Blade
- B. FC mezzanine card
- C. Flex10 Virtual Connect card
- D. PCI Express mezzanine pass-thru card

Answer: D

14. What should be identified as part of a troubleshooting action plan?

- A. opportunities for additional products and services
- B. specific root causes for the specified mode of failure
- C. current OS and virtualization solutions supported by HP
- D. scalability requirements and planned growth

Answer: B

15. Which HP Care Pack Service is categorized as High Availability?

- A. Proactive Select
- B. Proactive 24
- C. Support Plus 24
- D. Critical Service

Answer: D

16. Which key benefits are provided by HP UPS units? (Select three.)

- A. protection from power spikes
- B. increased power efficiency
- C. power conversion to DC output
- D. reduced noise and heat
- E. increased uptime

Answer: A,B,E

17. A customer decides to use an MSA2000sa as additional storage for the storage blades in their enclosure. Which components are required as part of the enclosure solution to enable this functionality? (Select two.)

- A. blades with embedded P400 Controllers
- B. blades with P700 Controller mezzanine cards
- C. an HP StorageWorks 3Gb SAS BL Switch
- D. an HP InfiniBand Switch
- E. an HP StorageWorks 600 Modular Disk System

Answer: B,C

18. Which resource can be used to determine total cooling requirements for a proposed HP BladeSystem solution?

- A. Insight Display
- B. Onboard Administrator
- C. Product Bulletin
- D. BladeSystem Power Sizing Tool
- E. Performance Quick Reference Tool

Answer: D

19. Which function in the HP P4000 Storage Solution provides online scalability within volumes and across pools?

- A. SAN/iQ Storage Clustering
- B. SAN/iQ Multi-Site SAN
- C. Automatic Data Center Mirroring
- D. Centralized Management Console

Answer: A

20. On a server running HP Data Protector Express the customer wants to connect a c-Class tape blade. Which HP resource is used to install the required driver for the SC44Ge SAS HBA?

- A. HP Library & Tape Tools
- B. HP Software Update Manager
- C. HP StorageWorks Tape CD-ROM
- D. HP Version Control Manager

Answer: C