



**Exam Code:** HP0-S16

**Exam Name:** Implementing HP BladeSystem

**Vendor:** HP

**Version:** DEMO

## **Part: A**

1: Which view provides additional pop-up information on server and slot location in the HP BladeSystem Integrated Manager?

- A.tree
- B.icon
- C.table
- D.picture

**Correct Answers: D**

2: Which ProLiant Essentials value pack is the primary replacement for the Rapid Deployment Pack LE?

- A.Insight Control Data Center Edition
- B.ProLiant Essentials Server Migration Pack
- C.HP Insight Control Linux Edition for BladeSystem
- D.ProLiant Essentials Virtualization Management Software

**Correct Answers: C**

3: What must be installed with Rapid Deployment Pack (RDP) to enable the deployment of Windows Server 2003 and Linux operating systems on HP Itanium-based server blades?

- A.WISE installer
- B.Integrity Integration Module
- C.ProLiant Integration Module
- D.64-bit Windows and Linux Support Pack for Itanium 2

**Correct Answers: B**

4: What does the HP Insight Control Environment for BladeSystem (ICE-BL) require? (Select three.)

- A.SMTP
- B.SNMP
- C.Apache 2.0
- D.IIS version 6
- E.Windows 2003 Server SP2
- F.Red Hat Enterprise Linux 5.1

**Correct Answers: B D E**

5: Which types of performance analysis are available when using the Performance Management Pack on a BL460c Server Blade? (Select two.)

- A.online analysis
- B.offline analysis
- C.distributed flexible timeframe online analysis
- D.consolidated fixed timeframe offline analysis

**Correct Answers: A B**

6: You have successfully deployed Windows Server 2003 to 15 new server blades using an RDP deployment job from HP Systems Insight Manager (SIM). You now need to secure them against unwanted network attack. Which tool generates a security report that explains the security issues and actions needed?

- A.Virtual Machine Manager
- B.Security Management Pack
- C.Performance Management Pack
- D.BladeSystem Integrated Manager
- E.Vulnerability and Patch Management Pack

**Correct Answers: E**

7: What does the OpenSSH feature allow HP SIM to securely do? (Select three.)

- A.log into other systems
- B.remotely control other systems
- C.remotely run commands on other systems
- D.run automatic discovery of non-HP systems
- E.make configuration changes on other systems

**Correct Answers: A C E**

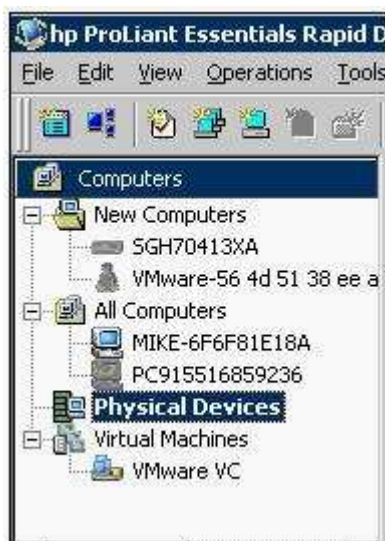
8: Your customer is experiencing problems with a server blade not booting to the OS. HP Technical Support requested an Array Diagnostic Utility (ADU) report to help diagnose the internal array. How do you gather the report?

- A.Download and run the online ADU.
- B.Access the ADU from the Server Management Homepage.
- C.Select "Diagnose Array" from the iLO graphical user interface.
- D.Boot from the SmartStart CD and select Manage Server to access the ADU.

**Correct Answers: D**

9: Click the Exhibit button.

You are trying to customize the Rapid Deployment Pack console for your c-Class BladeSystem deployment and management. Which entry can you create in the "Physical Devices" level?



- A.new Virtual Bay
- B.new Virtual Machine
- C.new blade iLO 2 entry
- D.new rack entry for BladeSystem

**Correct Answers: A**

10: Which processor uses 64-bit x86-based standard architecture and Hyper-Transport technology?

- A.AMD Athlon
- B.Intel Itanium2
- C.AMD Opteron
- D.Intel Xeon 7000 Sequence

**Correct Answers: C**