



**Exam Code:** HP0-M12

**Exam Name:** HP WinRunner 9.2 Software

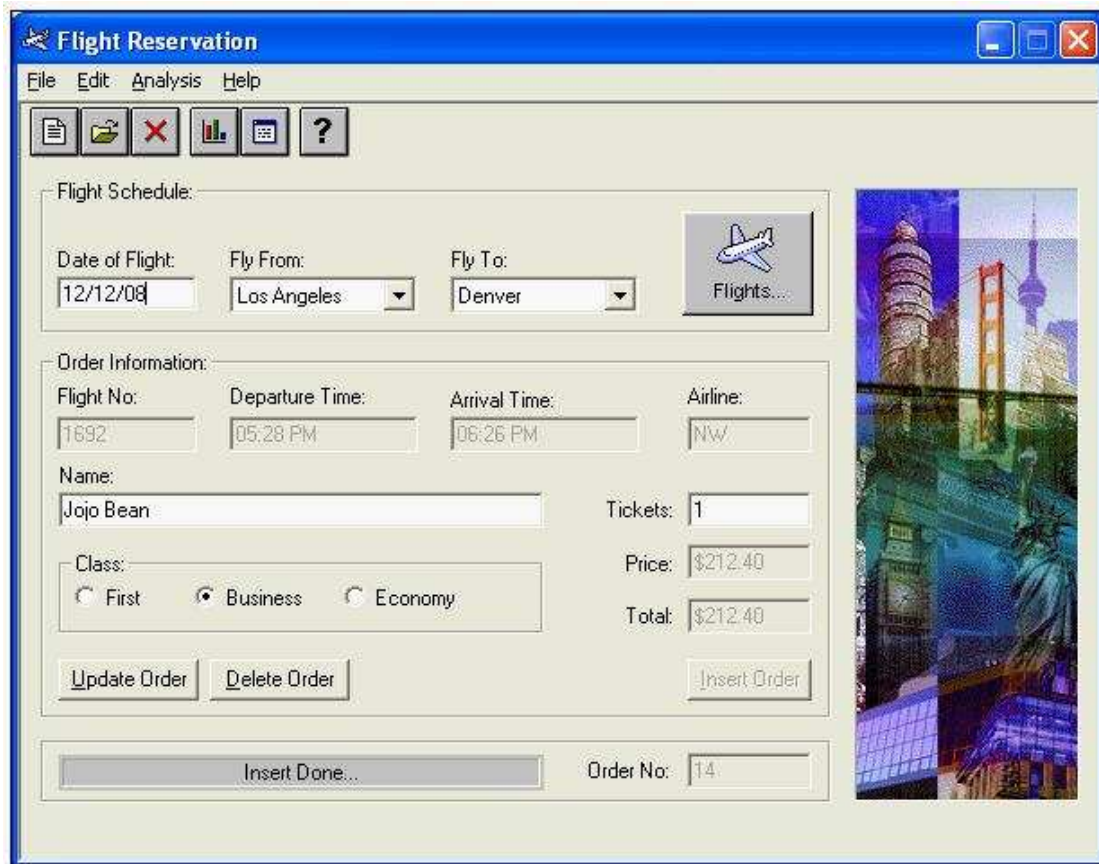
**Vendor:** HP

**Version:** DEMO

## Part: A

1: Click the Exhibit button.

You want to synchronize on the Status Bar with the text "Insert Done... ". Which TSL statement would meet this requirement?



A.wait(10);

B.obj\_check\_gui("Insert Done...", "list1.ckl", "gui1", 16);

C.obj\_wait\_info("Insert Done...", "label", "Insert Done...", 10);

D.obj\_check\_info("Insert Done...", "label", "Insert Done...", 10);

**Correct Answers: C**

2: How do you specify a 15-second timeout in the global timeout settings?

A.15

B.150

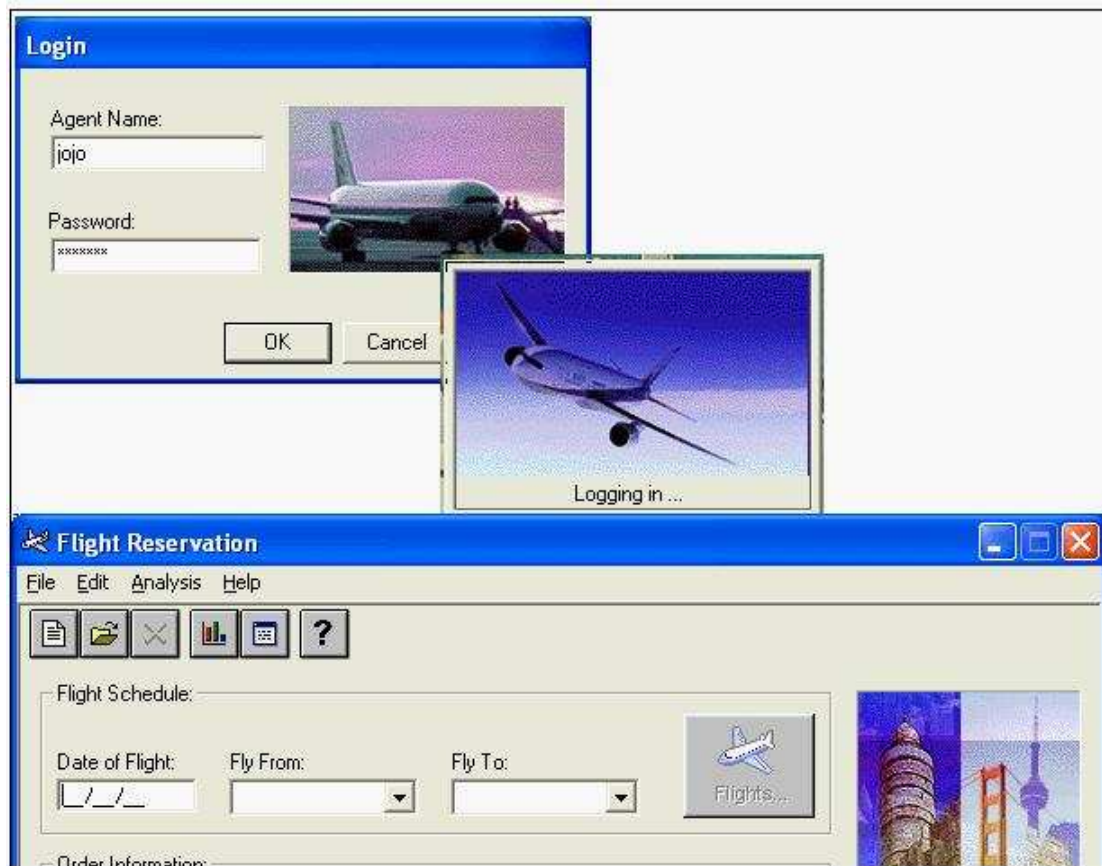
C.1500

D.15000

**Correct Answers: D**

3: Click the Exhibit button.

Which method should you use to synchronize the application after logging in?



- A. wait for a bitmap to refresh
- B. wait for a window to appear
- C. wait for an object state change
- D. wait for a process screen to complete

**Correct Answers: B**

4: You are testing a banking application. At 8 AM an employee logs in successfully and it takes about 5 seconds for the main menu window to appear. At 9 AM it takes approximately 15 seconds for the main menu window to appear after login. If you were to incorporate this time difference in a script, which WinRunner feature would you use so that the script runs successfully despite the difference in time for the main menu window to appear?

- A. Verify
- B. Data drive
- C. Synchronize
- D. Parameterize

**Correct Answers: C**

5: Which synchronization statement is automatically generated during recording?

- A. win\_activate("Flight Reservation");
- B. set\_window ("Flight Reservation 10");
- C. obj\_wait\_bitmap("Flights", "Img2", 6, 7, 8, 101, 114);
- D. obj\_wait\_info("Insert Done...", "label", "Insert Done...", 10);

**Correct Answers: B**

6: The process for building a functional WinRunner script goes through four steps. What are these steps? (Select four.)

- A.plan the test
- B.synchronize
- C.record steps
- D.parameterize
- E.add verification
- F.analyze results
- G.execute the test

**Correct Answers: B C E G**

7: A test script contains both Context Sensitive and Analog recording. The script keeps failing on the window where the Analog recording is played back. Which function can you include in your script to ensure that windows and objects are in the same locations as when the test was recorded?

- A.win\_move function
- B.GUI\_load function
- C.invoke\_app function
- D.set\_window function

**Correct Answers: A**

8: In which file does WinRunner store user actions on the application under test captured during recording?

- A.lock
- B.script
- C.chklist
- D.debug

**Correct Answers: B**

9: During recording, WinRunner "listens" to the actions a user performs on the application (and to the response from the server) and creates a log of these steps. Which language does WinRunner use to create these steps in a script?

- A.C Language
- B.VBScript Language
- C.Test Script Language
- D.Virtual User Language

**Correct Answers: C**

10: What is the default recording mode that WinRunner uses?

- A.Analog
- B.Low-level
- C.Standard / Default
- D.Context Sensitive

**Correct Answers: D**