



**Exam Code:** HP0-773

**Exam Name:** Installing & Supporting Standard HP SAN  
Environments

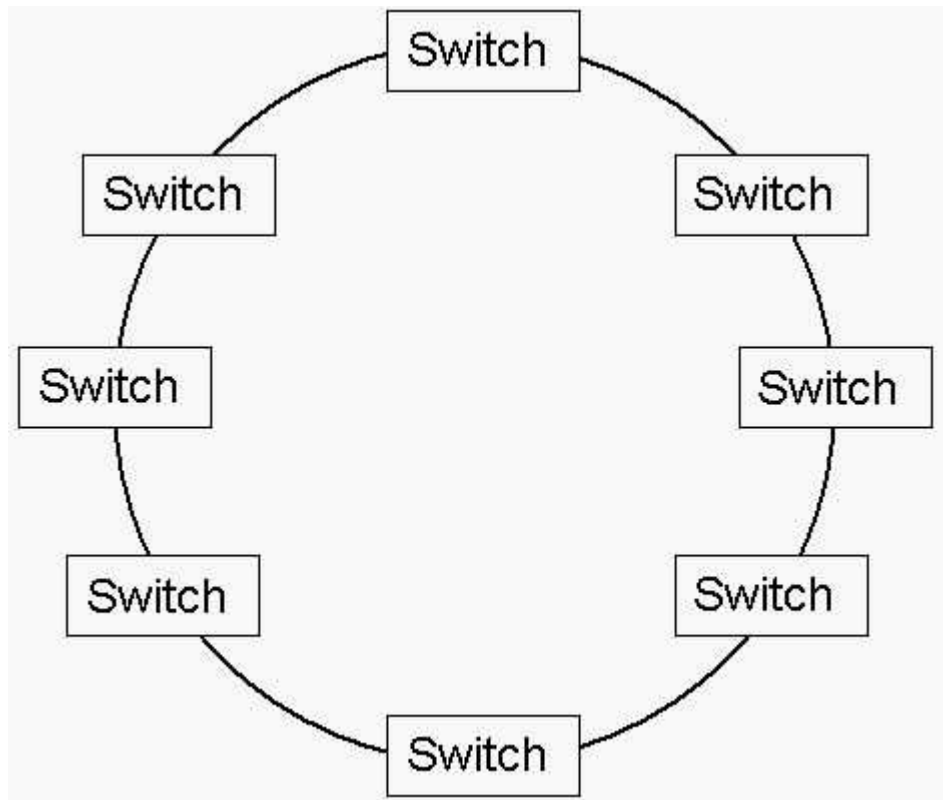
**Vendor:** HP

**Version:** DEMO

## Part: A

1: Click the Exhibit button.

A customer requests a replacement of B-series switches with M-series switches in the configuration shown in the exhibit. Why is it NOT possible to fulfill the customer's request as a supported solution?



- A. Only Brocade supports a ring topology.
- B. The maximum number of switch hops is three.
- C. A minimum of two inter-switch links is required.
- D. Ring topology requires an uneven number of switches.

**Correct Answers: B**

2: After gathering all customer requirements, you offer a solution. There are different validation levels available to ensure the solution meets or exceeds the customer's needs. Which method is NOT adequate?

- A. Setup a test environment which addresses most key aspects.
- B. Compare the solution against the rules of the SAN Design Guide.
- C. Compare the solution against the rules of the OEM manufacturer.
- D. Choose a supported standard solution of the SAN Design Guide.

**Correct Answers: C**

3: What is the most important consideration if a service level requirement is high availability?

- A. capability to scale incrementally over time as storage and connectivity needs increase
- B. decision to implement a dual redundant SAN

- C.implementation of serverless backup
- D.decision to use iSCSI instead of Fibre Channel

**Correct Answers: B**

4: A customer with HP-UX and Linux servers and EVA storage subsystems wants to integrate all components into one disaster tolerant configuration. What is the best product?

- A.Business Copy
- B.Continuous Access
- C.Secure Path Manager
- D.High Availability Fabric Manager

**Correct Answers: B**

5: In addition to the SAN Design Reference Guide and the Enterprise Backup Solution Design Guide, what do you need to validate a SAN design with an integrated Enterprise Backup Solution (EBS)? Select TWO.

- A.SAN Compatibility Matrix
- B.EBS Compatibility Matrix
- C.SAN and EBS Sizer Tool
- D.Backup Sizing Tool
- E.SAN Storage Planner

**Correct Answers: B D**

6: Which tools CANNOT be used for data management in a SAN? Select TWO.

- A.Virtual Replicator
- B.Fabric Watch
- C.Business Copy
- D.Continuous Access EVA
- E.Storage Node Manager

**Correct Answers: B E**

7: A customer has a SAN environment with EVA storage systems, multiple hosts, and no SAN security application. The primary association table that enables a host-to-LUN connection is located on the \_\_\_\_\_.

- A.EVA subsystem
- B.SAN switches
- C.SAN management server
- D.associated hosts

**Correct Answers: A**

8: What is an aspect of physical SAN security?

- A.centralized SAN management
- B.no-single-point-of-failure SAN design
- C.employment of at least two SAN managers
- D.restricted direct access to SAN devices

**Correct Answers: D**

9: Which license is required for fabric wide resource utilization analysis on B-series switches?

- A.OpenView Storage Builder
- B.Fabric Resource Analyzer
- C.Selective Storage Presentation
- D.Advance Performance Monitor

**Correct Answers: D**

10: Why should event logging be enabled on all devices connected to a SAN?

- A.Distributed event logging keeps the device event logs small and prevents buffer overflow.
- B.Enabling event logging replicates the event log to other devices for information redundancy.
- C.Event filtering will not work correctly if event logging is not enabled.
- D.Certain events such as "signal loss" are detected only in the locality of the problem.

**Correct Answers: D**