



**Exam Code:** e20-570

**Exam Name:** networked storage cas specialist exam

**Vendor:** EMC

**Version:** DEMO

## Part: A

1: Which tool provides the diagnostics screens for the Centera?

- A.CASScript
- B.CenteraCLI
- C.CenteraScript
- D.CenteraViewer

**Correct Answers: D**

2: What is a method for setting retention at the object level?

- A.API
- B.HPP
- C.MOPI
- D.Control Center

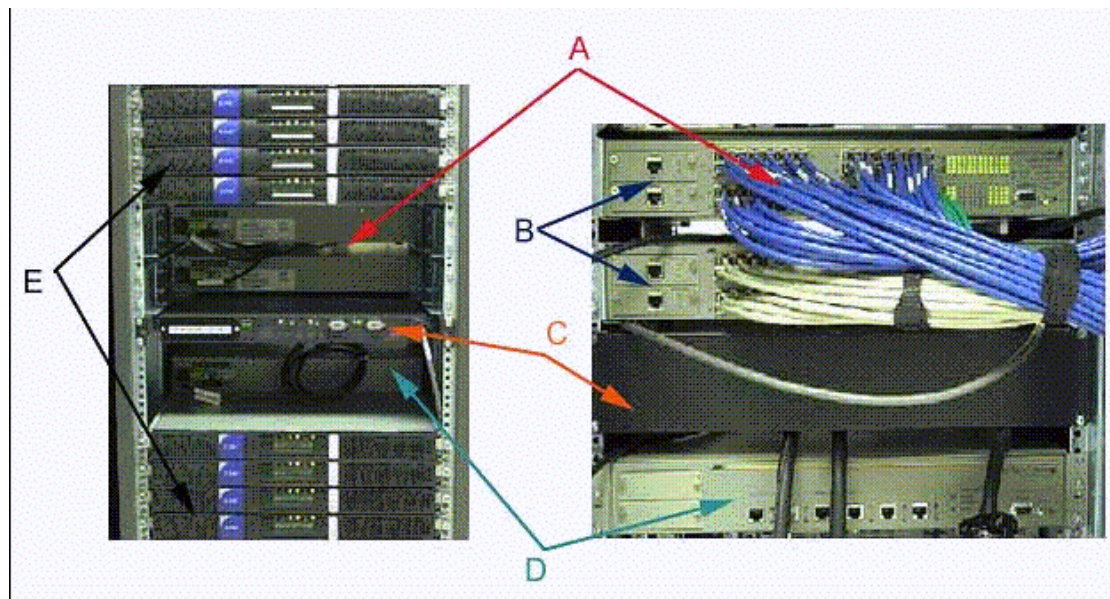
**Correct Answers: A**

3: A customer wants to enable application profiles in their environment. Their application does NOT natively support application profile use. How does this windows application specify a path to the application security profile?

- A.Have the application access the root profile on the Centera
- B.Application keeps the security profile as part of the metadata
- C.Create a profile and place it in the ini file of the application; then restart the application
- D.Add the CENTERA\_PEA\_LOCATION environment variable to the windows application server

**Correct Answers: D**

4: Click the Exhibit button. From the exhibit, identify component A.



- A.Node
- B.Cube switch
- C.Battery backup

D.External switch

**Correct Answers: B**

5: A customer with CE+ needs many different retention periods but their application does NOT support a native integration of the API. How does a customer meet this requirement?

A.Migrate all data to a native application

B.All data will have an infinite retention period

C.It is impossible to use retention periods for non-native applications

D.Use a filesystem-based gateway with different retention periods set on each shared folder

**Correct Answers: D**

6: How does fixed content differ from backup data?

A.Fixed content is a subset of backup data

B.Fixed content has long-term reference value

C.Backup data sets are a subset of fixed content

D.Backup data sets can include multiple revisions of a file while Fixed content is WORM data

**Correct Answers: B**

7: What is required to store data on the Centera?

A.Centera API

B.Centera CLI

C.CenteraViewer

D.Centera store software

**Correct Answers: A**

8: How would a PC be connected to a CUA if a standard monitor and keyboard were not available onsite?

A.Via crossover serial cable and a terminal emulator configured for 7 1 Even

B.Via crossover serial cable and a terminal emulator configured for 8 1 None

C.Via straight through serial cable and a terminal emulator configured for 7 1 Even

D.Via straight through serial cable and a terminal emulator configured for 8 1 None

**Correct Answers: B**

9: How long does content reside on a CUA before it is written to a Centera?

A.One minute, depending on system load

B.Typically 45 minutes or when cache is full

C.Content is immediately written to the Centera

D.Content is not written directly to the Centera by the CUA

**Correct Answers: B**

10: Which protection scheme provides maximum useable storage?

A.CPM

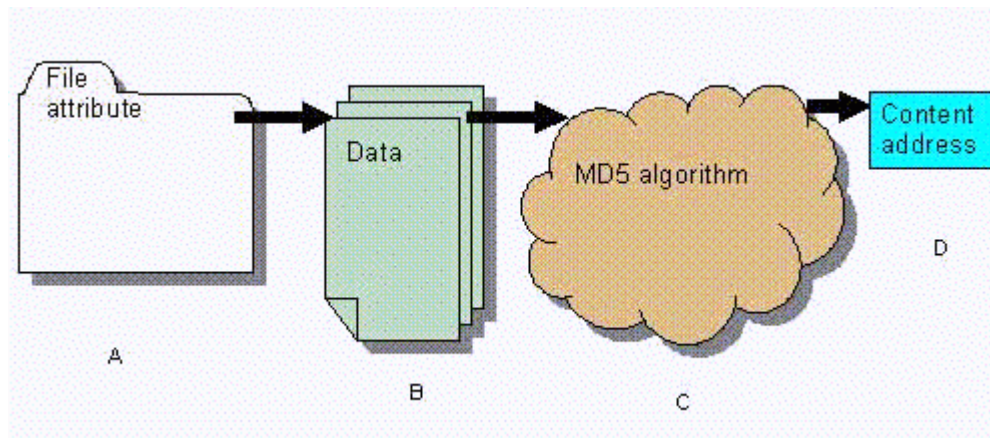
B.CPP

C.RAID 4

D.RAID 1/0

**Correct Answers: B**

11: Click the Exhibit button. What is the BLOB?



A.A

B.B

C.C

D.D

**Correct Answers: B**

12: Which algorithm is used to help calculate the content address?

A.API

B.MD5

C.MOBI

D.SHA-1

**Correct Answers: B**

13: What is required to link two (2) Centera cabinets in one (1) cluster?

A.ATS

B.Root switches

C.Media converter

D.Gigabit uplink modules

**Correct Answers: D**

14: How is the Centera connected to the mainframe? 1. ESCON 2. HTTP 3. FICON 4. TCPIP

A.1, 2, 3

B.1, 2, 4

C.1, 3, 4

D.2, 3, 4

**Correct Answers: C**

15: Which vendors offer gateway software for the Centera?

A. Microsoft, SAP, Onyx, Dell

B. IBM, Lotus, FileNet, StorageTek

C. Legato, EMC, SevenTen, Arkivio, Enigma

D. Powerfile, Oracle, Mobius, Princeton Softech

**Correct Answers: C**