



**Exam Code:** e20-533

**Exam Name:** Networked Storage - NS Specialist Exam

**Vendor:** EMC

**Version:** DEMO

## **Part: A**

1: What is used for centralized user and group management in a UNIX environment?

- A.NIS
- B.UFS
- C.UDP
- D.NTLM

**Correct Answers: A**

2: What is stored in a Virtual Data Mover's root file system?

- A.NTP
- B.Local Groups
- C.Usermapper configuration
- D.FTP root directory

**Correct Answers: B**

3: What is one characteristic of SnapSure?

- A.can mount a checkpoint on any Data Mover
- B.multiple checkpoints are linked in chronological order
- C.checkpoint is independent of its Production File System
- D.checkpoint shares the same volume as the Production File System

**Correct Answers: B**

4: What is used in a UNIX environment to mount a remote file system?

- A.NFS
- B.UFS
- C.CIFS
- D.VxFS

**Correct Answers: A**

5: When the getreason command is used, which status identifies that a Data Mover needs to be replaced?

- A.contacted
- B.connected
- C.dos booted
- D.powered off

**Correct Answers: D**

6: Which protocols are available when configuring DNS on a Data Mover?

- A.TCP and IP
- B.UDP and IP
- C.TCP and UDP
- D.UDP and ICMP

**Correct Answers: C**

7: A NAS solution is required that includes high availability and always available network connections. The Ethernet switch is made by Typhoon Data Networks and is IEEE compliant. Which EMC NAS networking solution must be implemented?

- A.DHCP
- B.VLAN
- C.LACP
- D.EthernetChannel

**Correct Answers: C**

8: Which industry standard network backup protocol is supported on Celerra?

- A.Simple Data Backup Protocol
- B.Network Data Backup Protocol
- C.Direct Connect Backup Protocol
- D.Network Data Management Protocol

**Correct Answers: D**

9: Which command is used to create a new user on the Data Mover for FTP?

- A.nas\_user
- B.nas\_newuser
- C.server\_user
- D.server\_ftpuser

**Correct Answers: C**

10: On which volume type is a file system created?

- A.Celerra disk volume
- B.Celerra slice volume
- C.Celerra meta volume
- D.Celerra stripe volume

**Correct Answers: C**

11: What are two [2] approved uses of EMC's implementation of Cisco Systems Fast EthernetChannel (Celerra Trunking)?

- A.Bandwidth Aggregation
- B.Fault Tolerance among single switch ports
- C.Fault Tolerance between multiple switch ports
- D.Combining multiple physical interfaces into a logical interface

**Correct Answers: B D**

12: Which storage template is available in a NS Integrated system that uses ATA physical drives?

- A.CX\_Standard\_Raid\_5
- B.CX\_All\_4Plus1\_Raid\_5
- C.ATA\_CX\_Standard\_Raid\_1
- D.ATA\_RAID3\_HS\_4+1\_8+1

**Correct Answers: D**

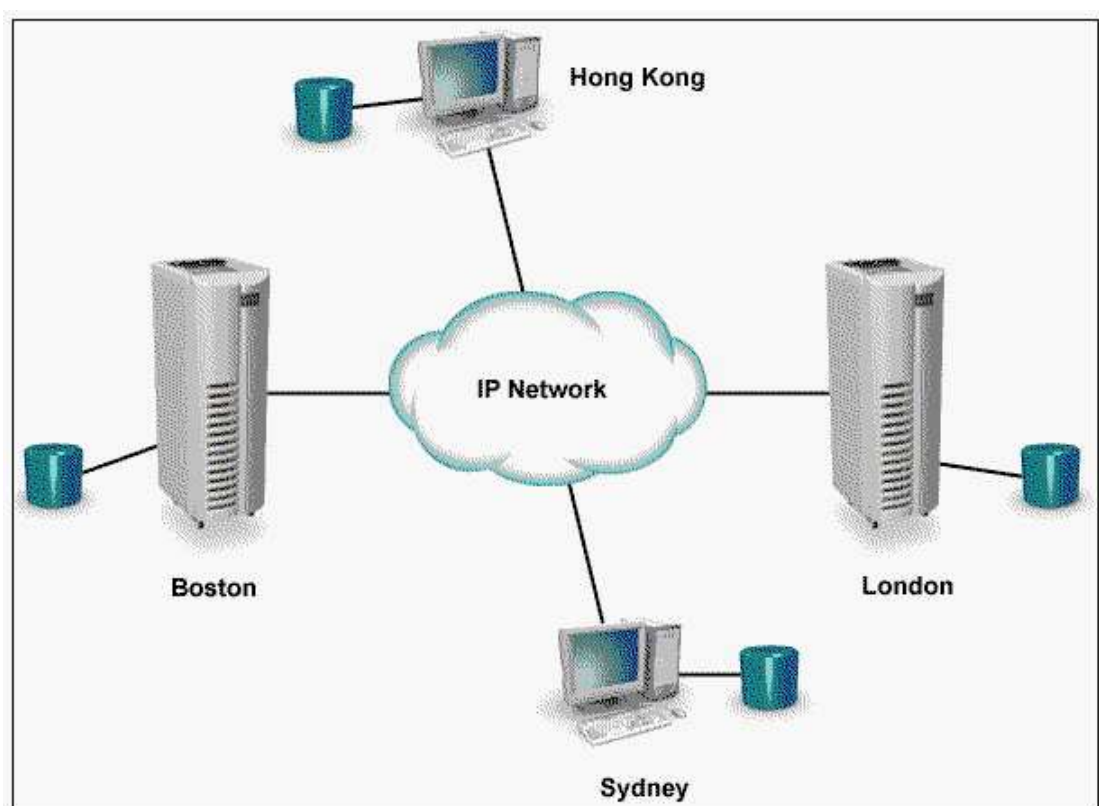
13: Which assigns the Fibre Channel WWN?

- A.Name server
- B.Operating system
- C.System Administrator
- D.Hardware manufacturer

**Correct Answers: D**

14: Click the Exhibit button.

Two Celerras are located in London and Boston. A NAS solution is required that maintains a copy of the Celerra data on a Sun server in Hong Kong, and an HP server in Sydney. Which NAS solution is appropriate?



- A.FarCopy
- B.Replicator
- C.OnCourse
- D.Symmetrix Remote Data Facility

**Correct Answers: C**

15: Which statement is correct about Virtual Data Movers [VDMs]?

- A.VDMs can change from UNICODE to ASCII
- B.VDMs can be used as default CIFS servers
- C.VDMs cannot use shared logical interfaces
- D.VDMs can support two CIFS servers with the same computer name

**Correct Answers: C**